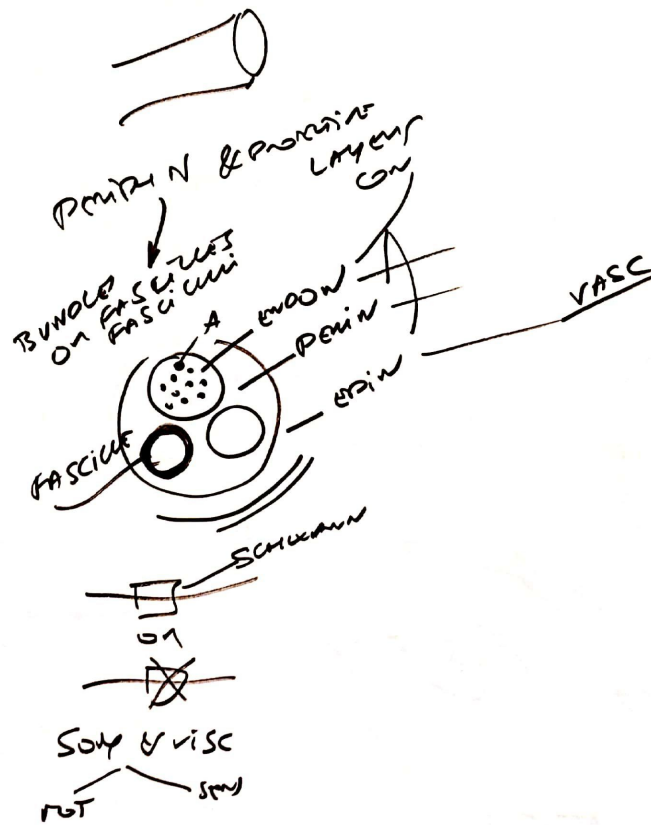






(3) PNS
NERVES

ORG
Penis
✓



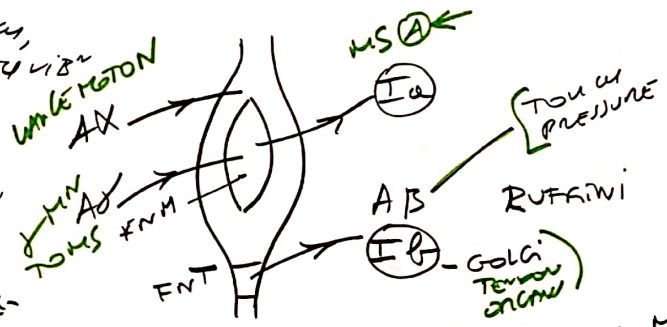
25)

GROSSE		10-20	70-120	A α (I α , I β)
		5-12	30-70	A β A γ (II)
PETITE		2-5	12-30	A δ (III)
		0,5-1	0,5-2	C IV

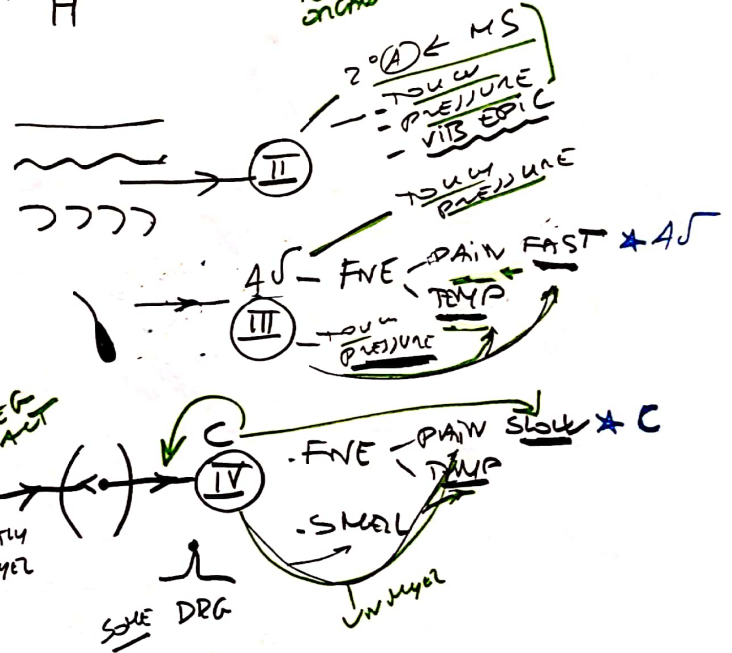
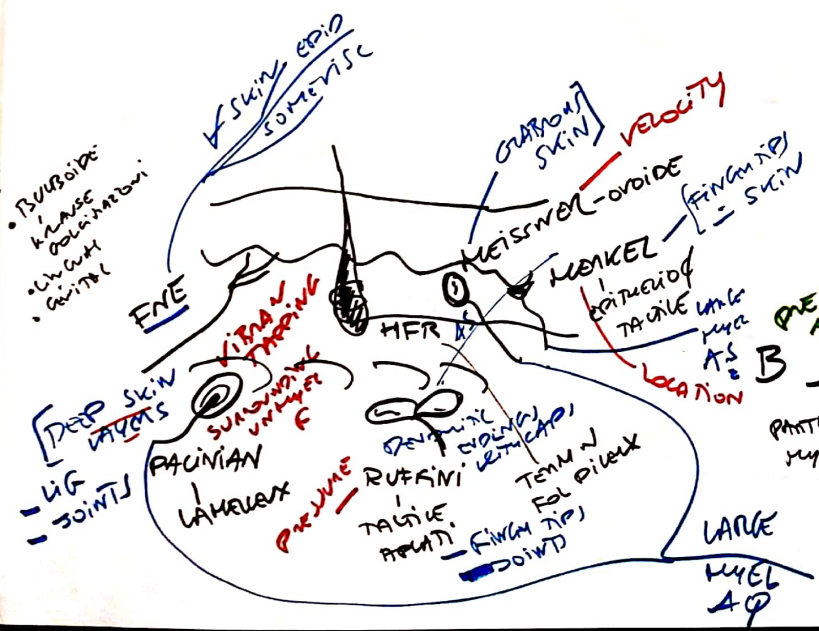
FRAS

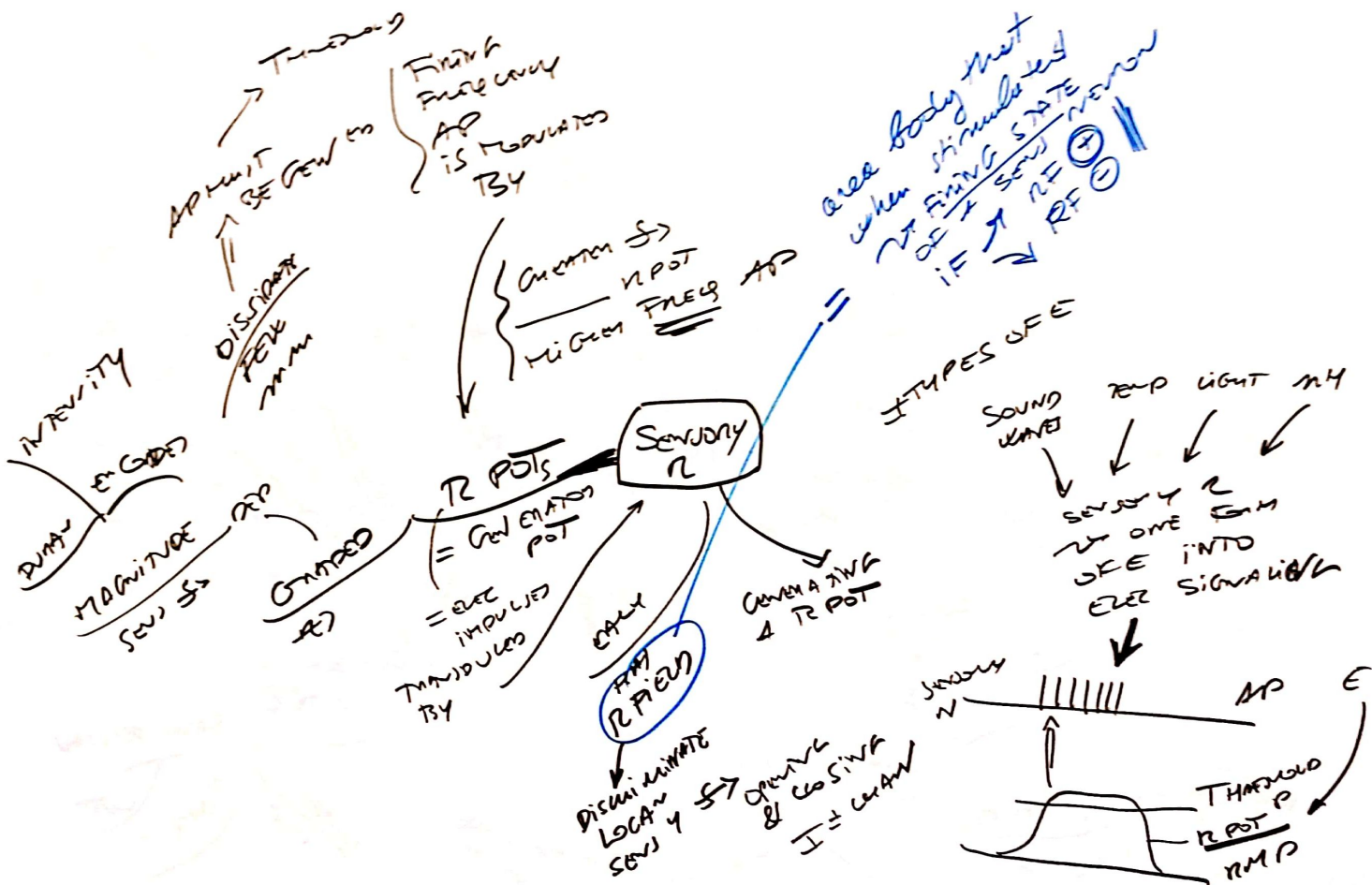
1670M

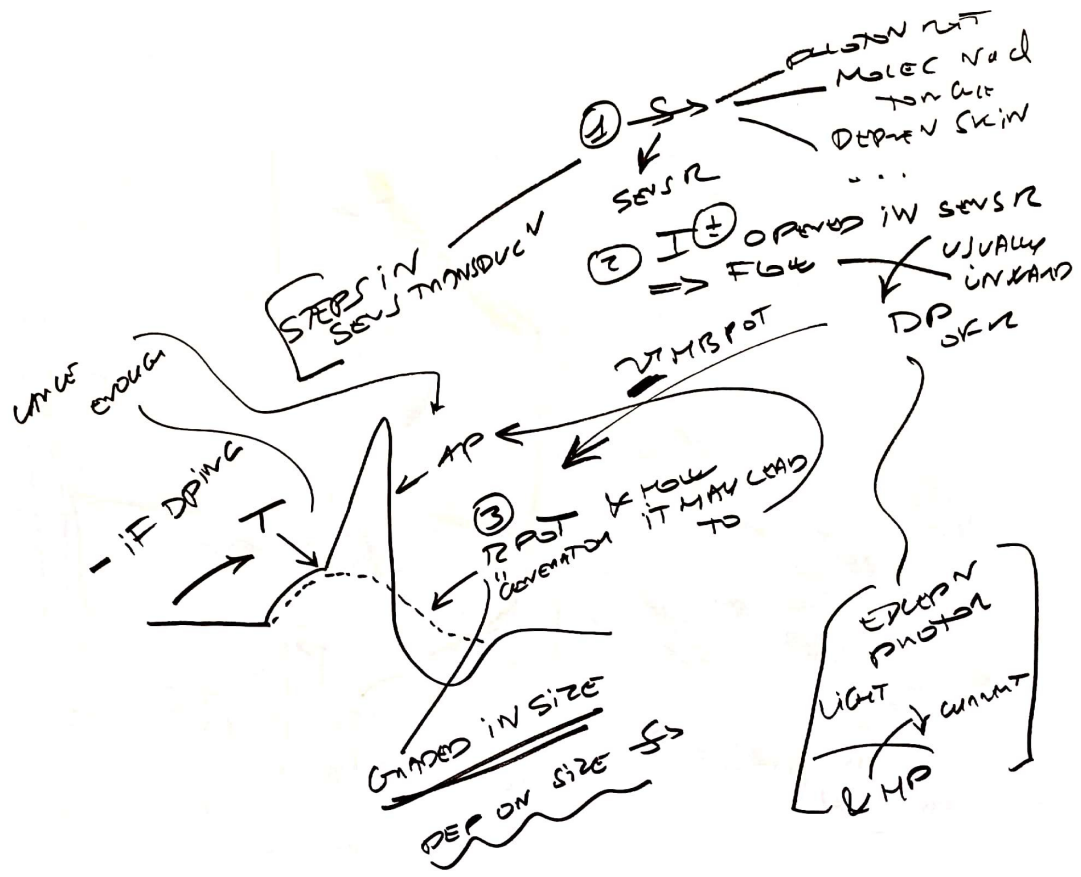
MEIS → DYN, FINE / LIGHT TOUCH,
 POSN SENS, LOW FREQ VIB
 PAC → HFV, P
 MARIK → P, DEEP SOFT TOUCH,
 POSN SENS (EG SHAPE,
 EDGET)
 RUF → P, SLIPPAGE OR OBSTCL,
 ALONG SFE SKIN,
 JOINT ANGLE CHANGE

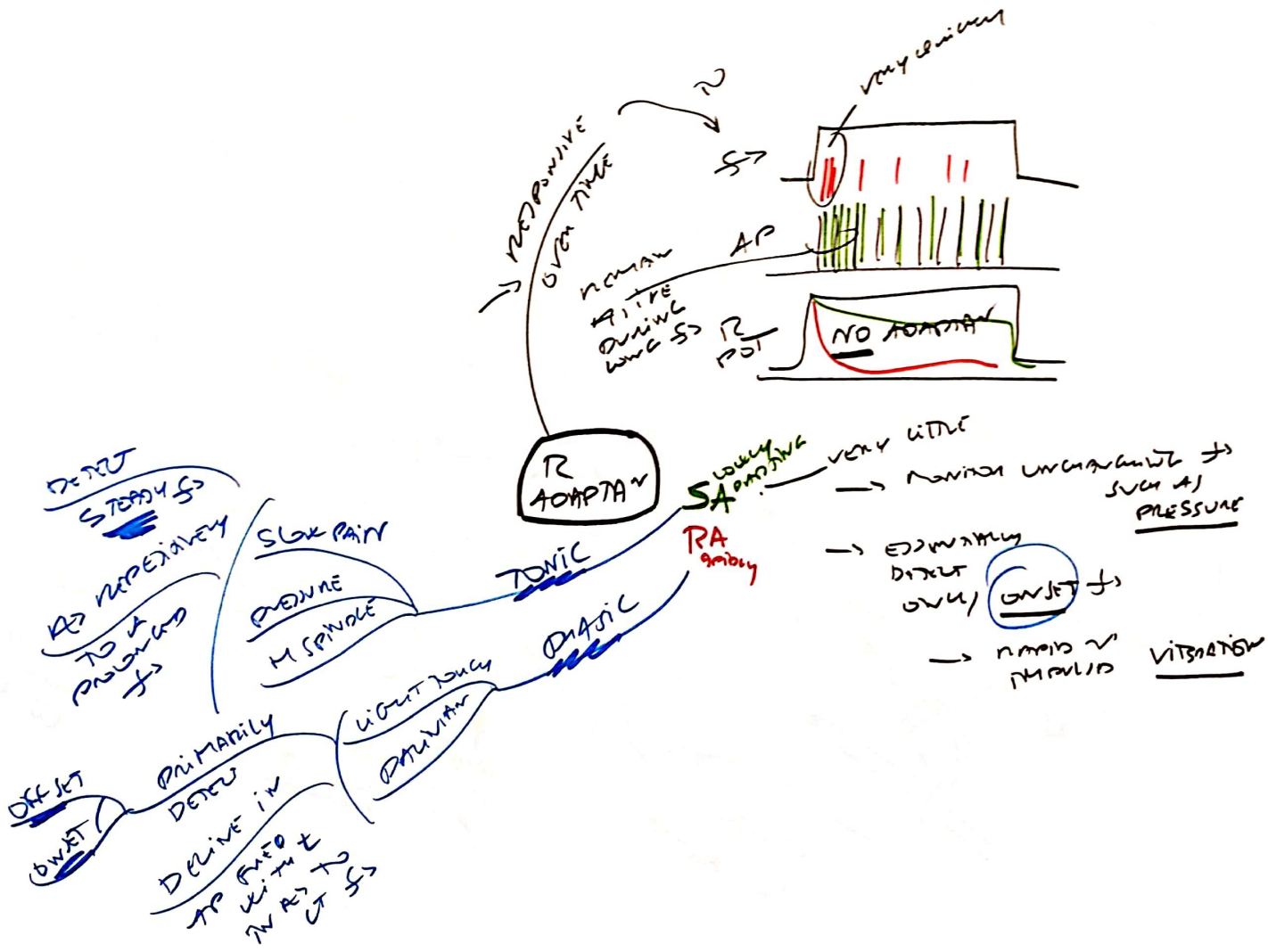


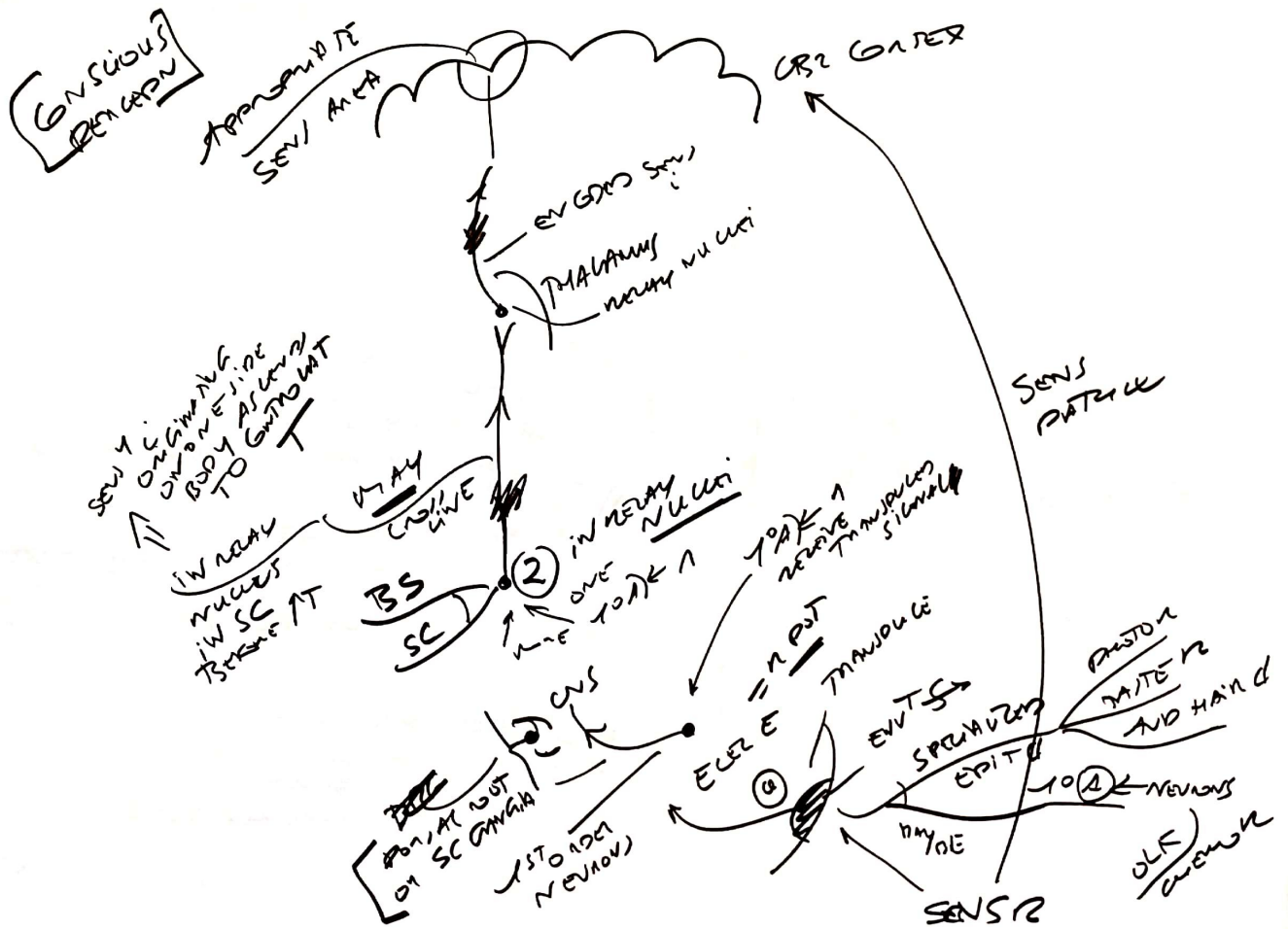
SENSORY ONLY ○
 A
 B
 C
 I
 II
 III

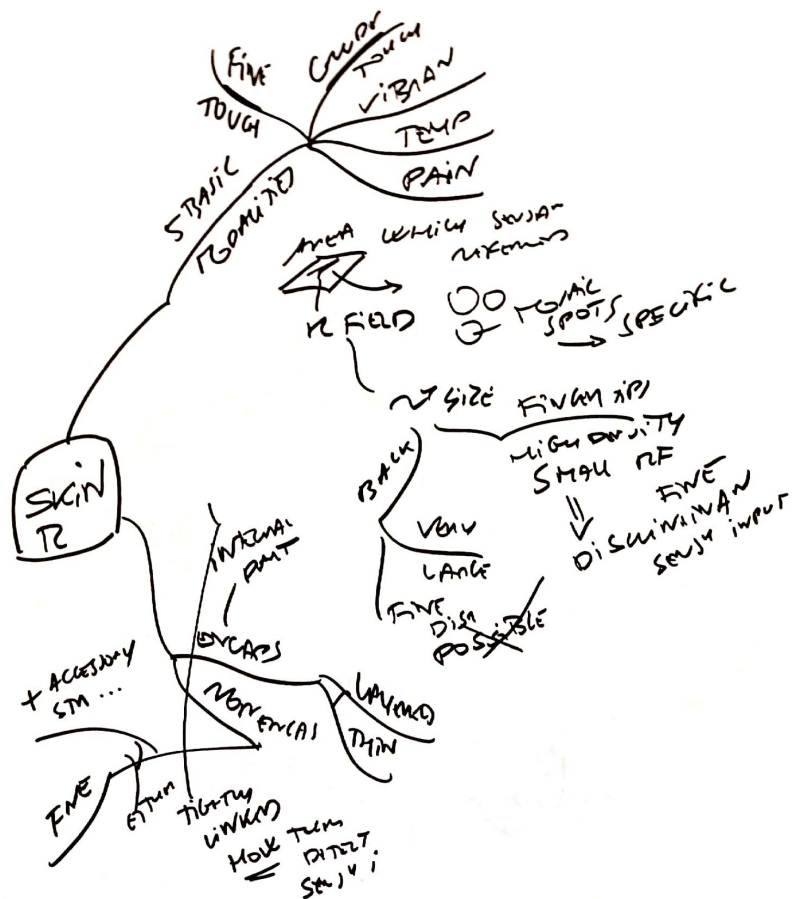




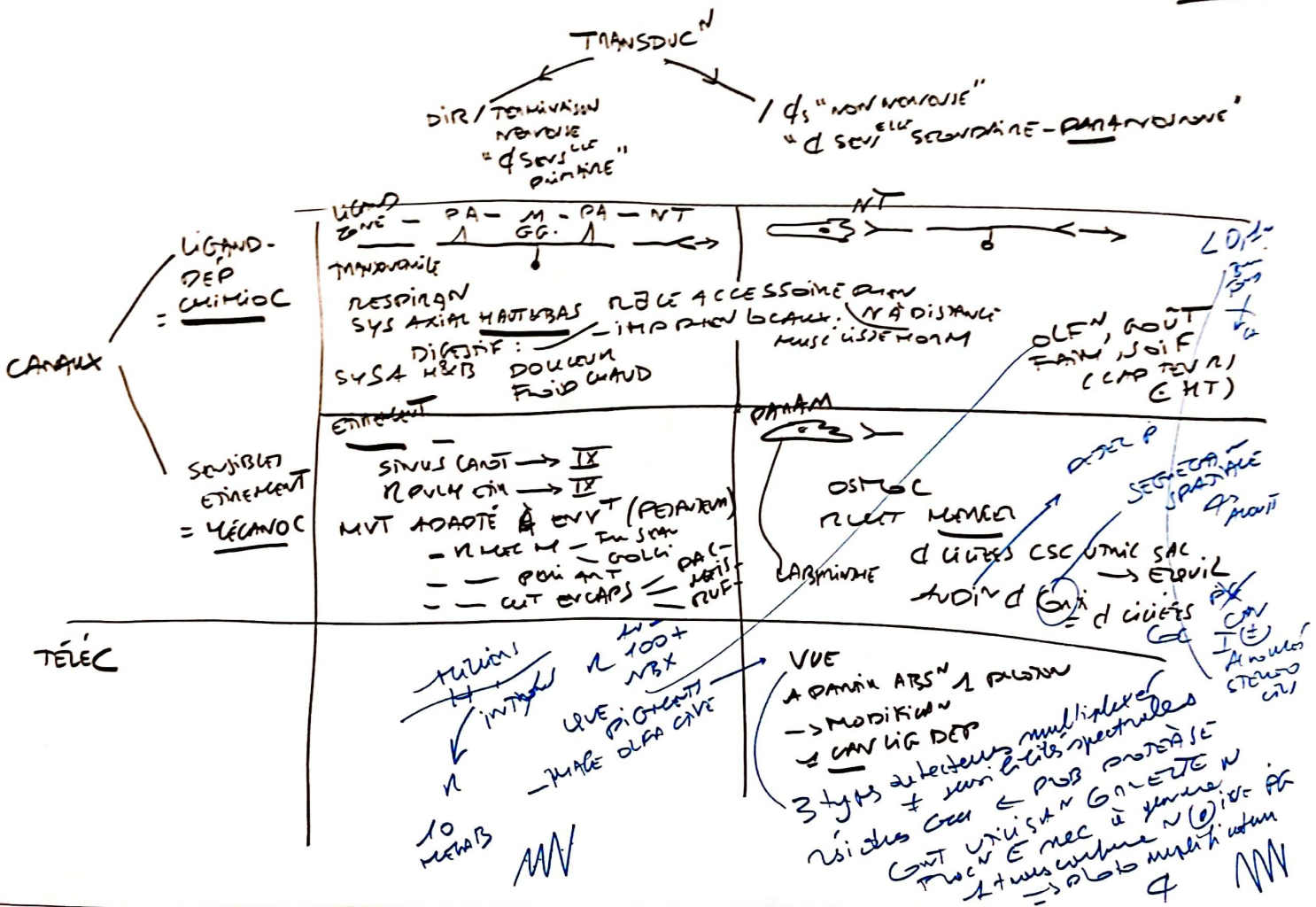


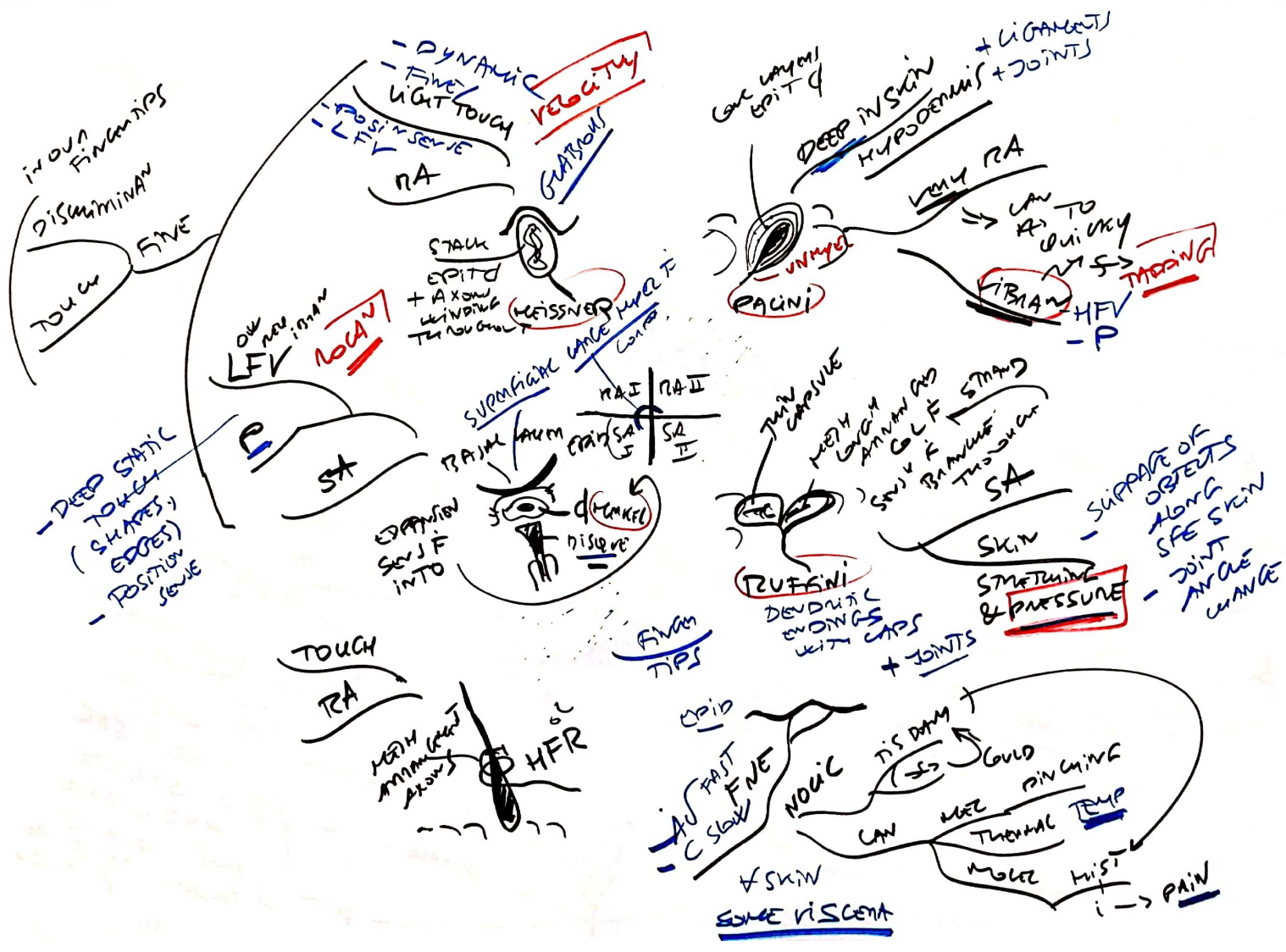






CLASSIFICATION CAPTEURS





• FINE / AJUSTE / C SLOW / VISC / PAIN TEMP

CHAMP RECEPTEUR
 POINT BOND PRÉCIS (I)
 LARGE BORDS MAL DÉLIMITÉS (II)

PEAU GLABRE & R
 UNIFORM

↓
 17000 UNITÉS MÉCANOR
 CFAST
 FN
 AS A INDEXTAN

Petit Fol FAI
 Poilue

TRAPIDE (FA)
 PAS DE RÉPONSE STATIQUE

ADAPTATION

PS = POSITION SENSIVE

LENTE (SA)

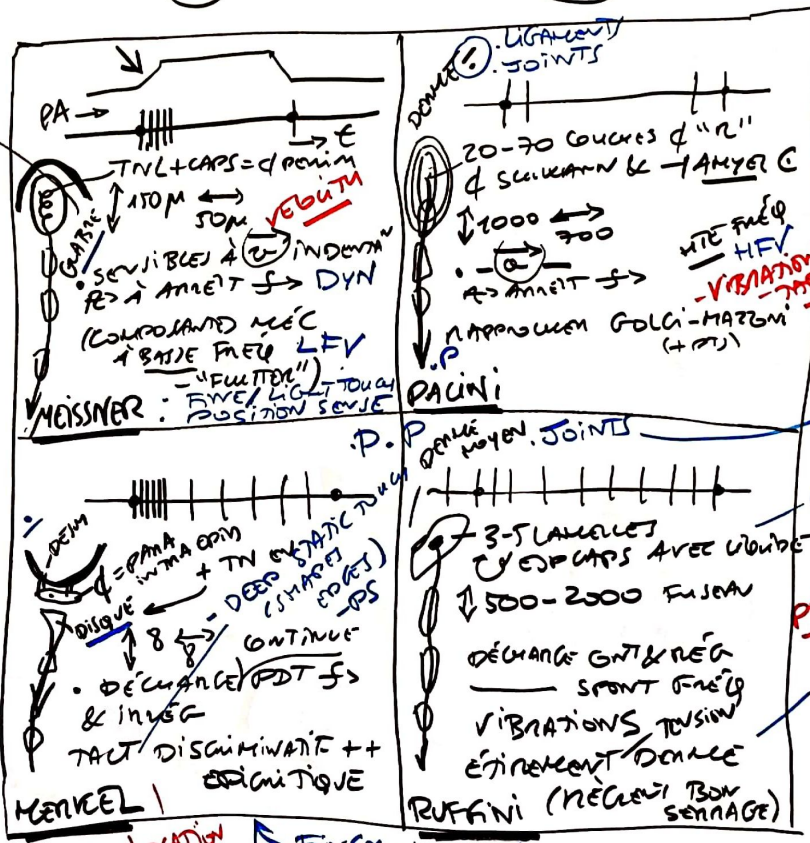
RÉPONSE STATIQUE

STAT = STATIC
 DYN = DYNAMIC

P = PRESSURE

LFV = LOW FREQUENCY VIBRATION

HFV = HIGH



PA → E
 TNL + CAPS = d'origine
 170M SOM
 SENSIBLES À "INDENTATION"
 AS À ANNÉES → DYN
 (COMPOSANT MÉC
 À BASSE FRÉQ LFV
 "FLUTTER")
 MEISSNER : FINE, LIGHT TOUCH
 POSITION SENSIVE

DEFORME !
 LIGAMENTS JOINTS
 20-70 COUCHES de "R"
 de SKELERON & LAMYEL C
 ↓ 1000 ↔ 700
 AS ANNÉES →
 NAPPONNEMENT GOLGI-MARZONI (+ PT)
 PACINI

PS
 DISQUE
 = PMA
 + TN STATIQUE TOUCH
 DEEP (SHARP) EDGES
 PS
 DISQUE
 8 → CONTINUE
 DÉCHARGE (PDT) →
 & INVEG
 TACT DISCONTINUE + +
 STATIQUE
 MERKEL

PS
 3-5 LAMELLES
 CYCLES CAPS AVEC VIBRATIONS
 ↓ 500-2000 FUSION
 DÉCHARGE GNT & REG
 SPONT FINE
 VIBRATIONS TENSION
 ÉTIREMENT DOLLE
 RUFFINI (MÉCANO TISSU SERRAGE)

ANGLE CHANGE
 DYNAMIC ENDOPLAS WITH CAPS
 PRESSURE
 SLIPPAGE OF OBJECTS ALONG SFB SKIN

LOCATION ← FINGER TIPS →

