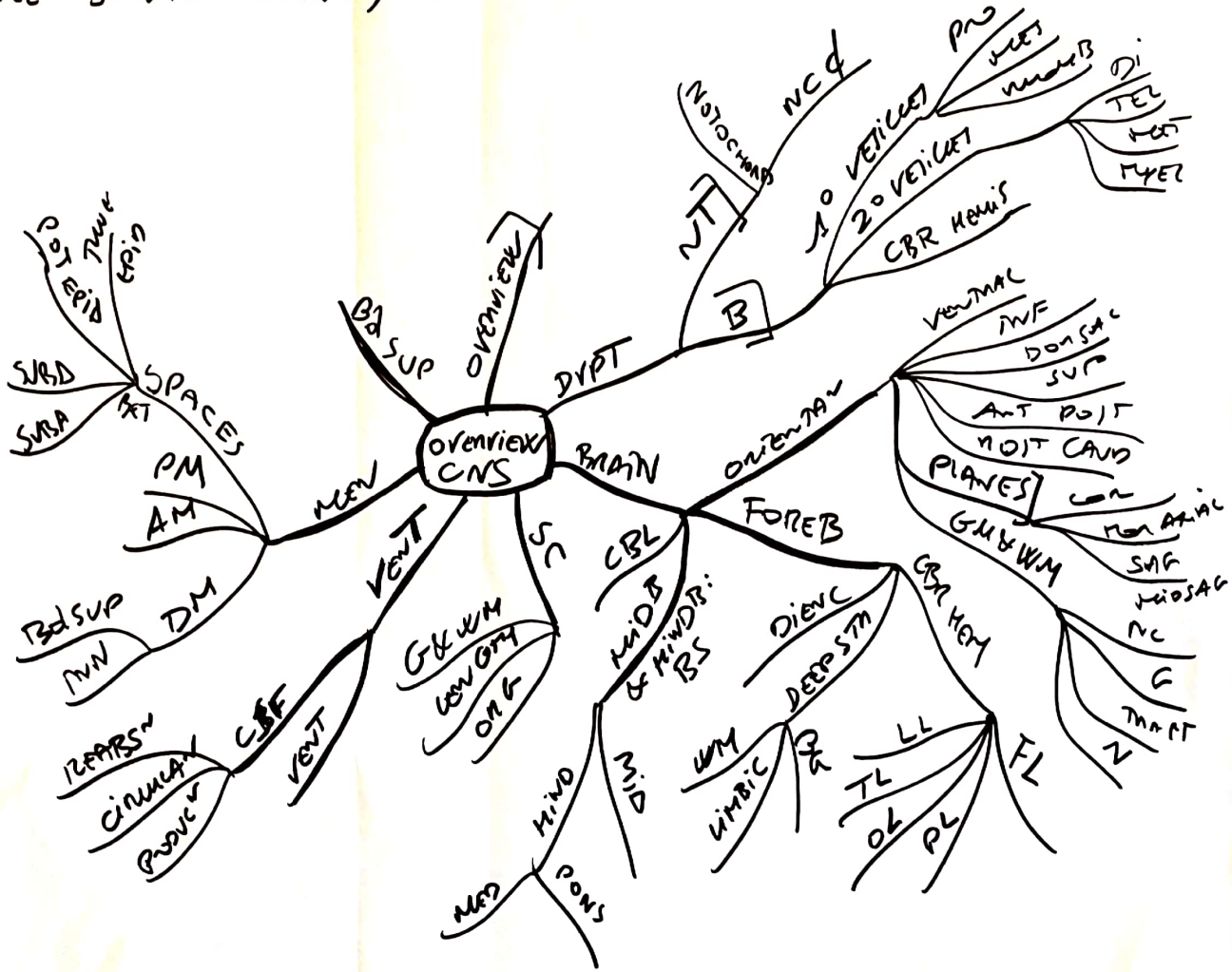
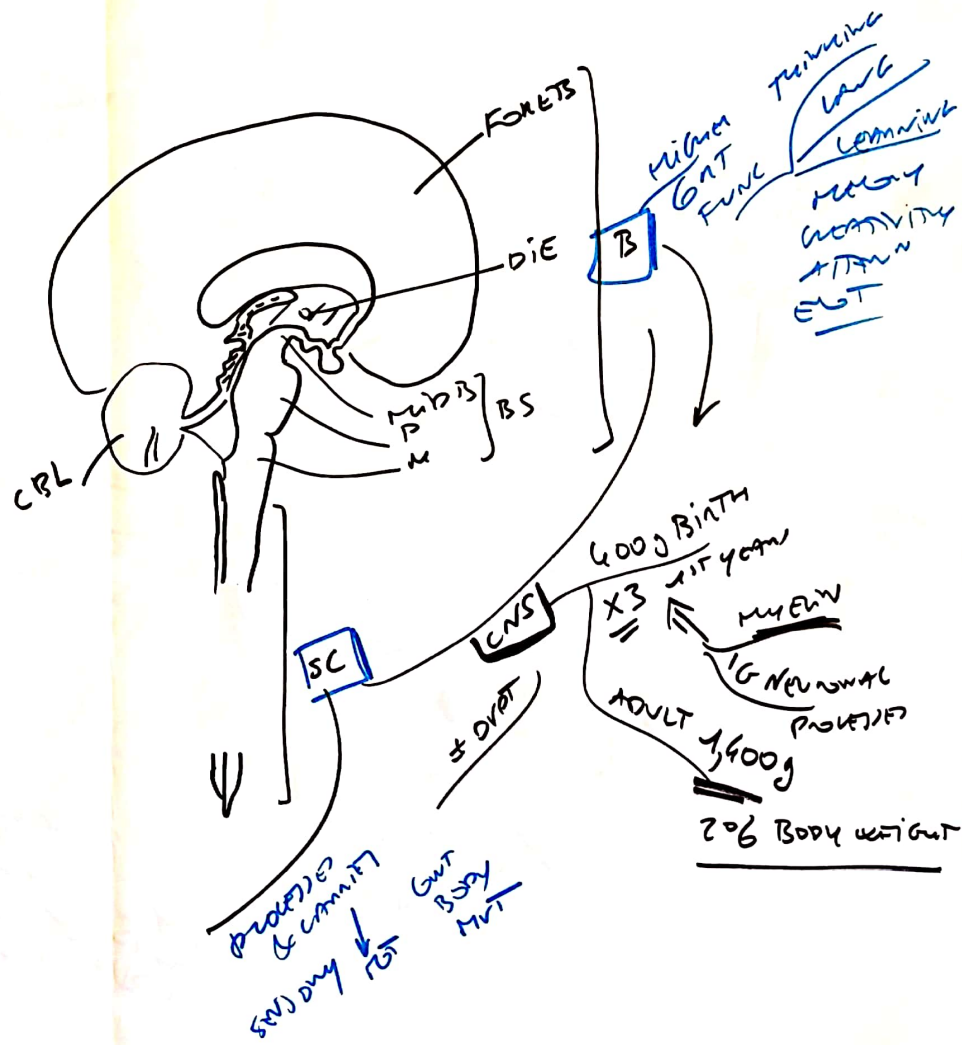
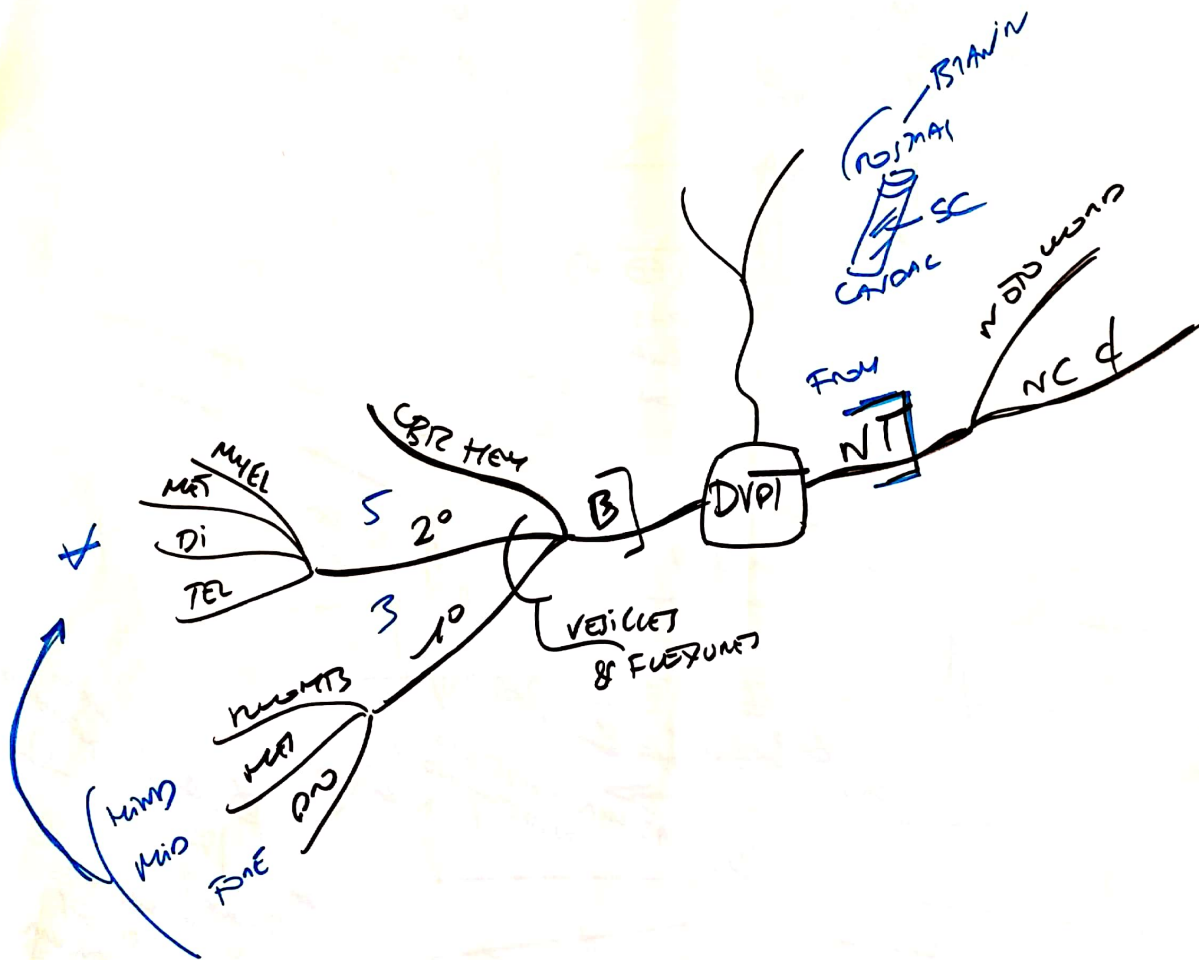
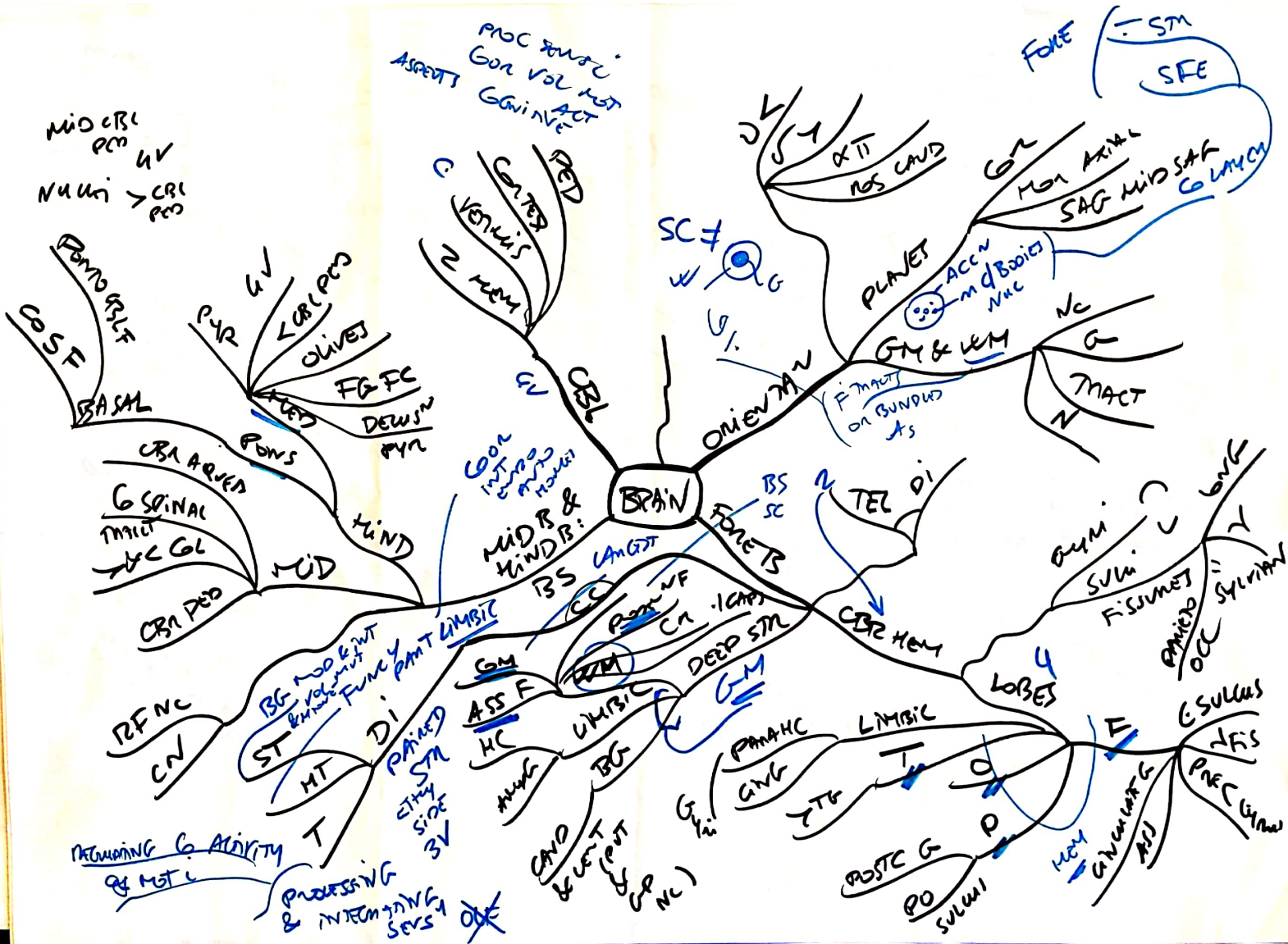


CUN APP HYDROCEPHALUS  
 — CASE Sarah's pregnancy 6/10/19

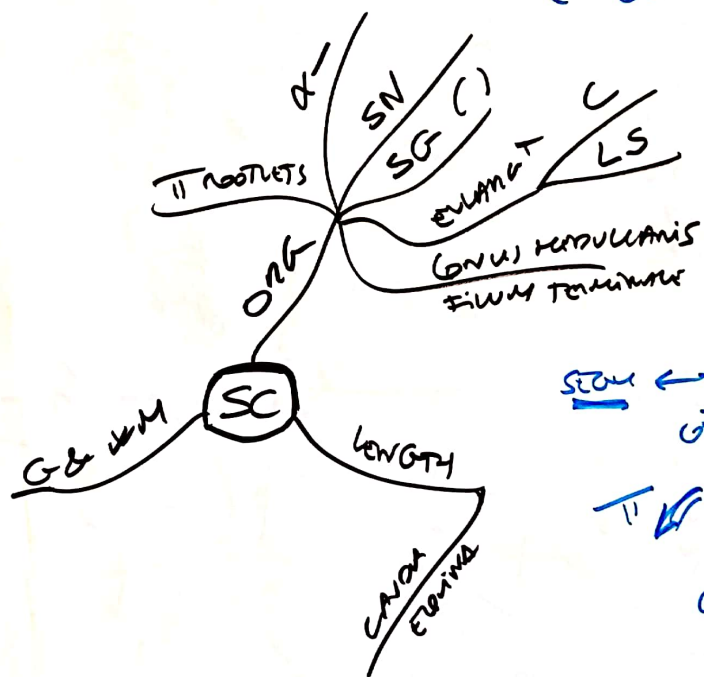




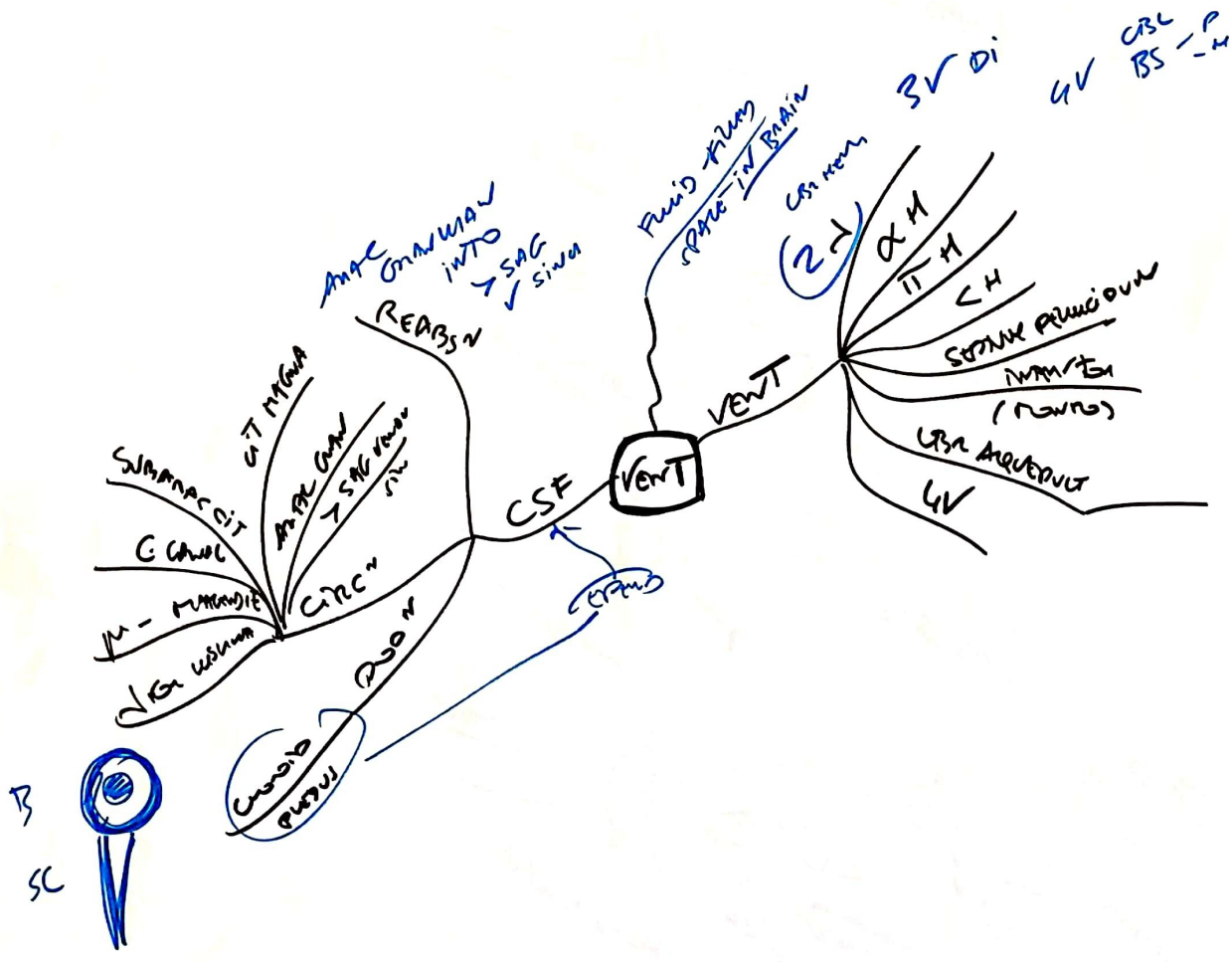


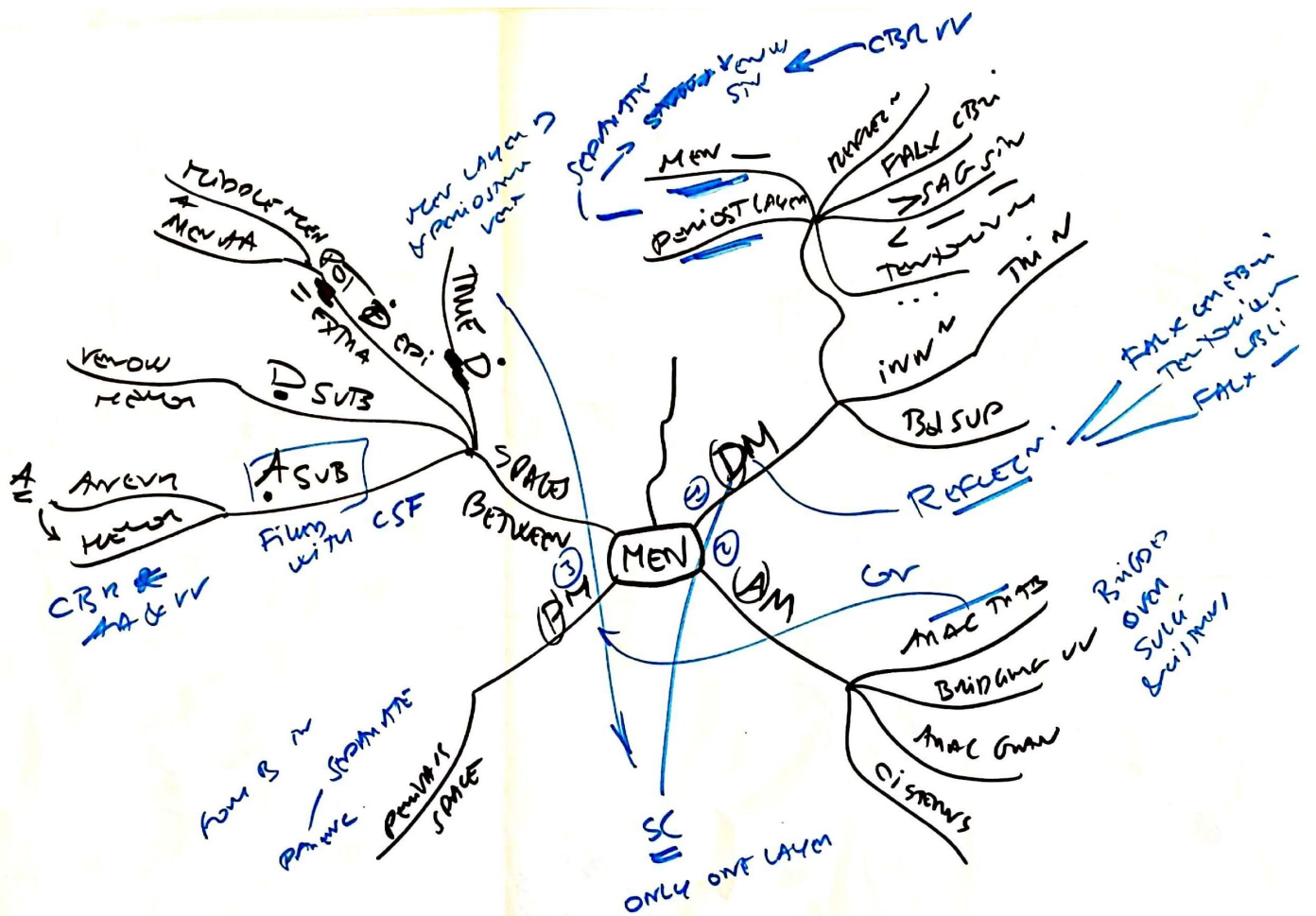


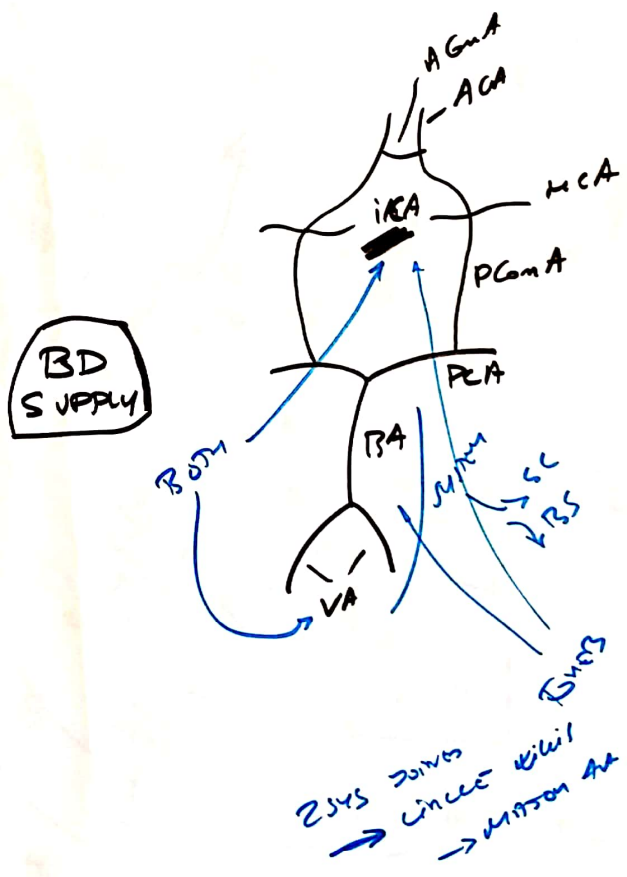
- INITIAL PROCESSING SENS C
- SOME MST TARGETS →  $\pi$  & VE  $\in$  GRAND



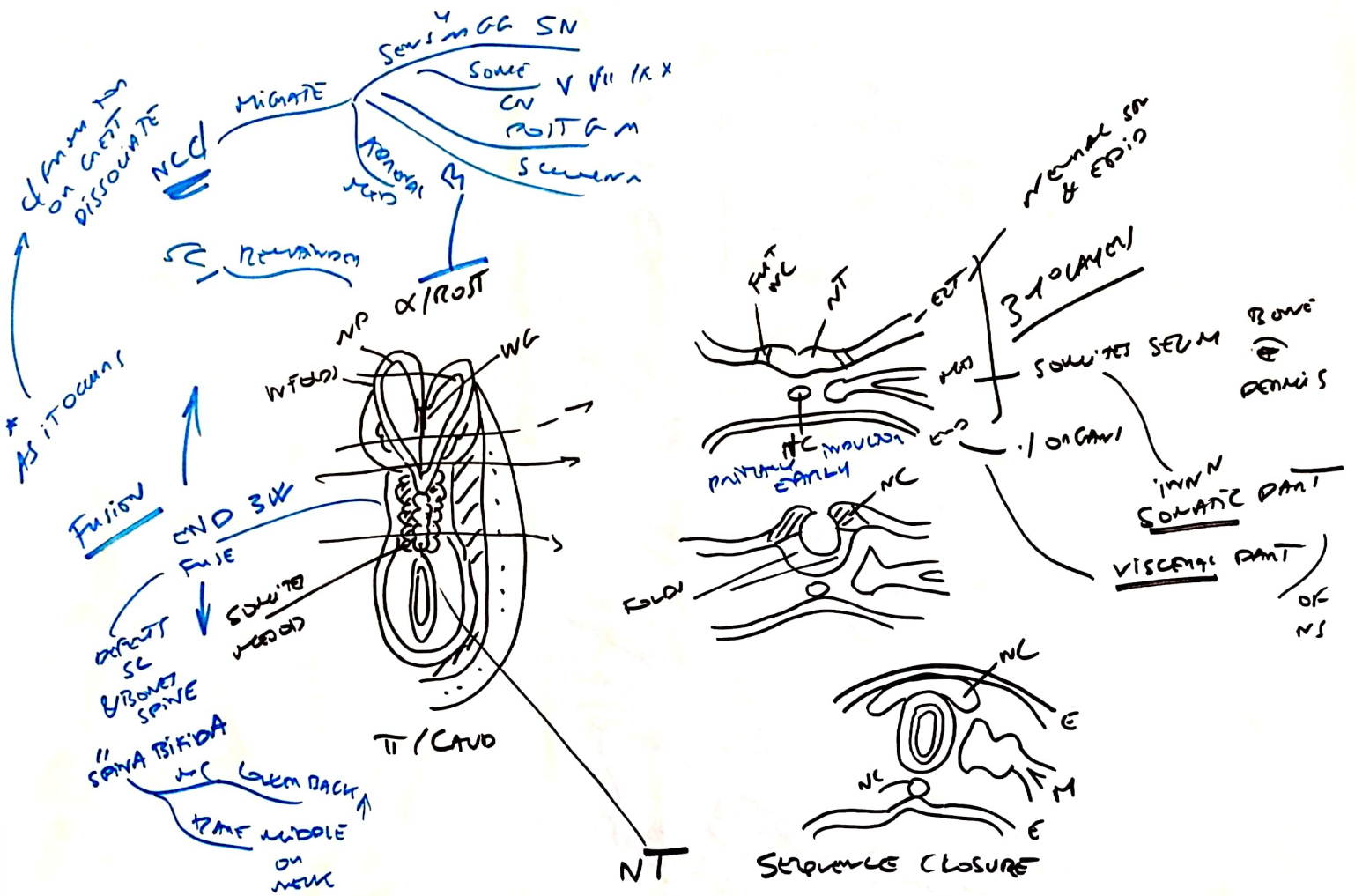
$\pi$  ↔ NN ROOTS  
 GTT  
 $\pi$  SENS 4  
 CRODIT  
 SG  
 $\alpha$   
 PMS  
 MING

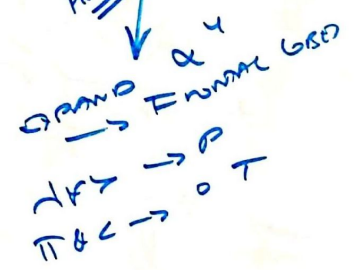
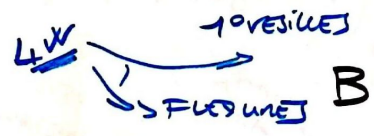
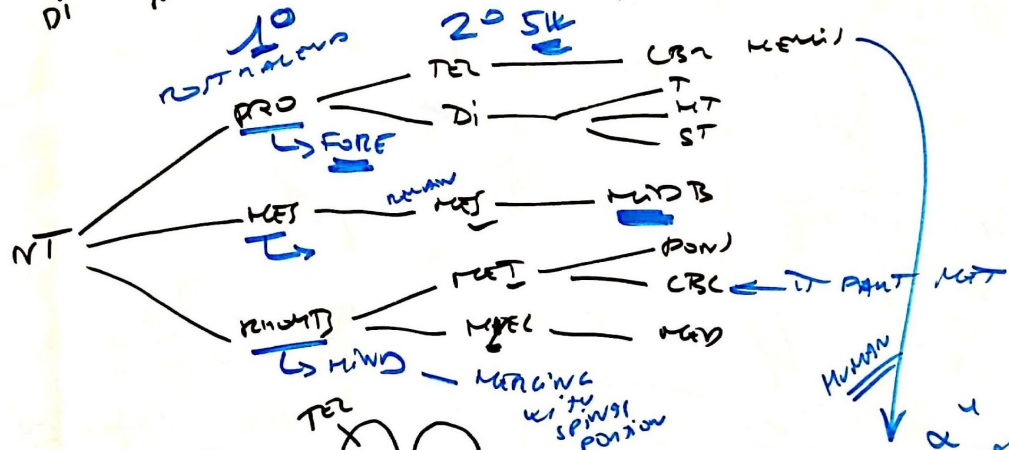
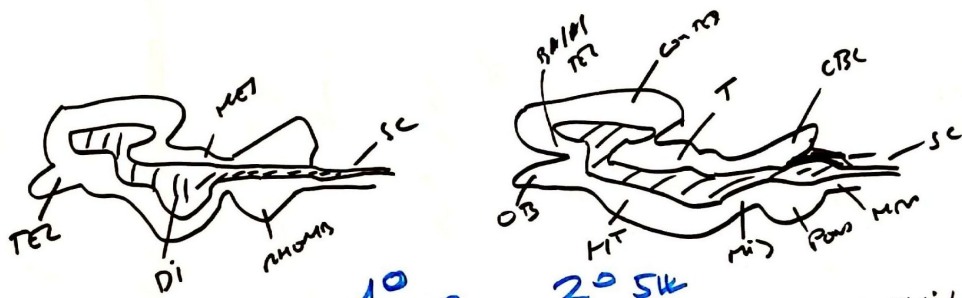


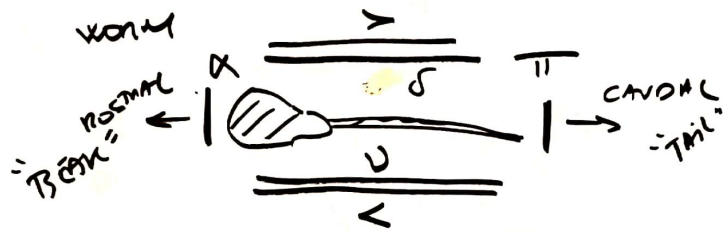




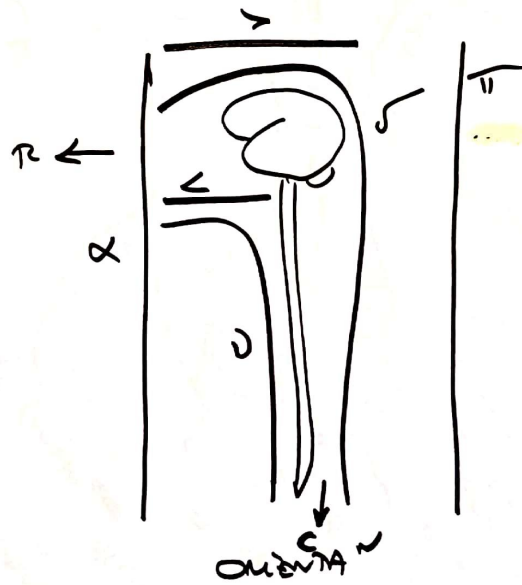


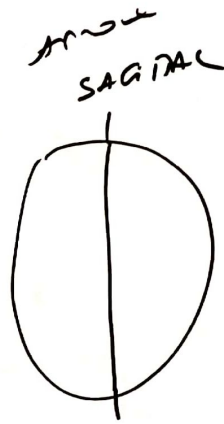
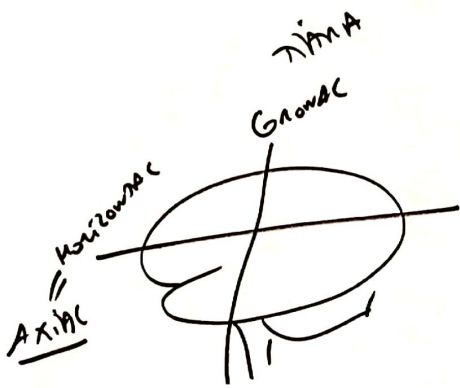






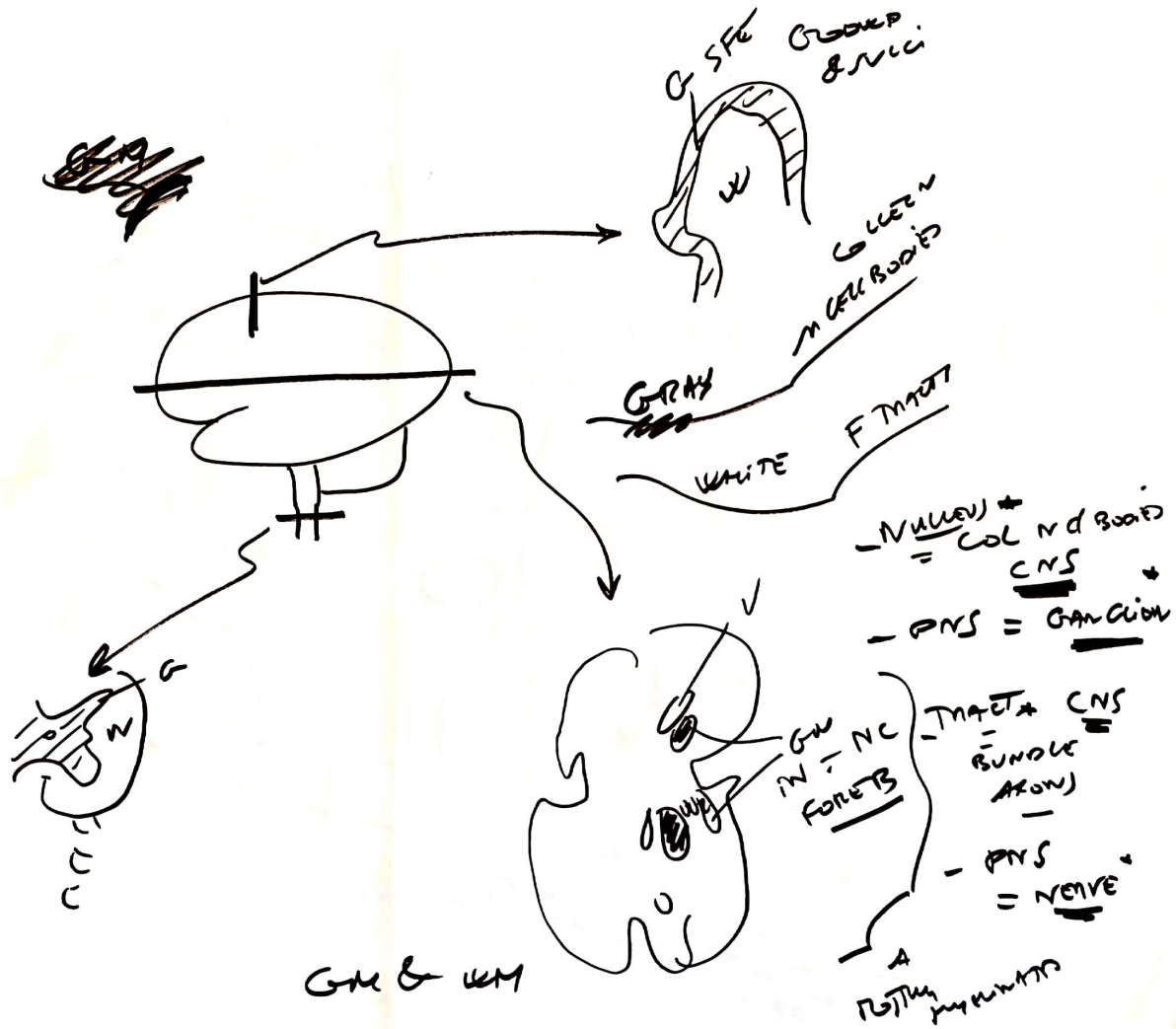
UPRIGHT  
 GRAB (HUMANS)

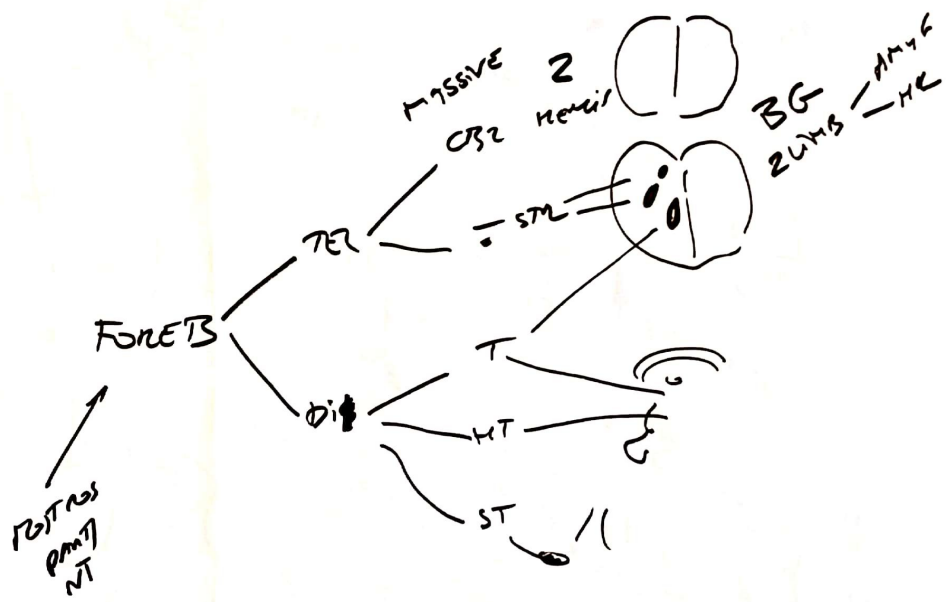


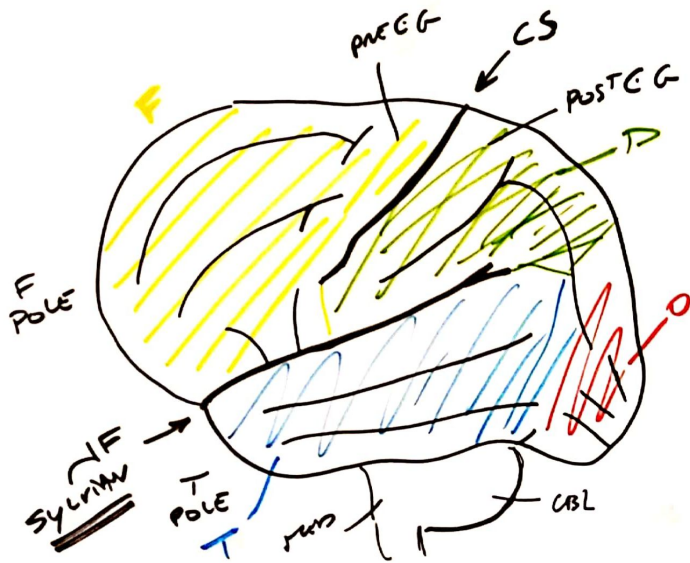


MID SAG

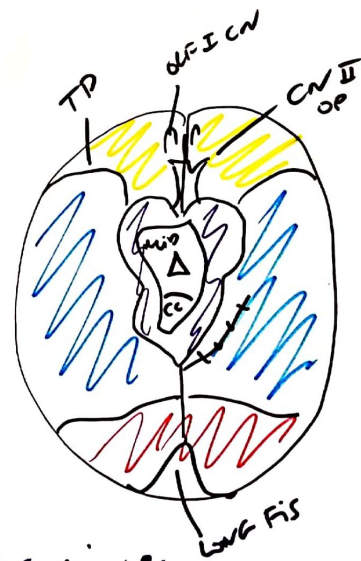
PLANES



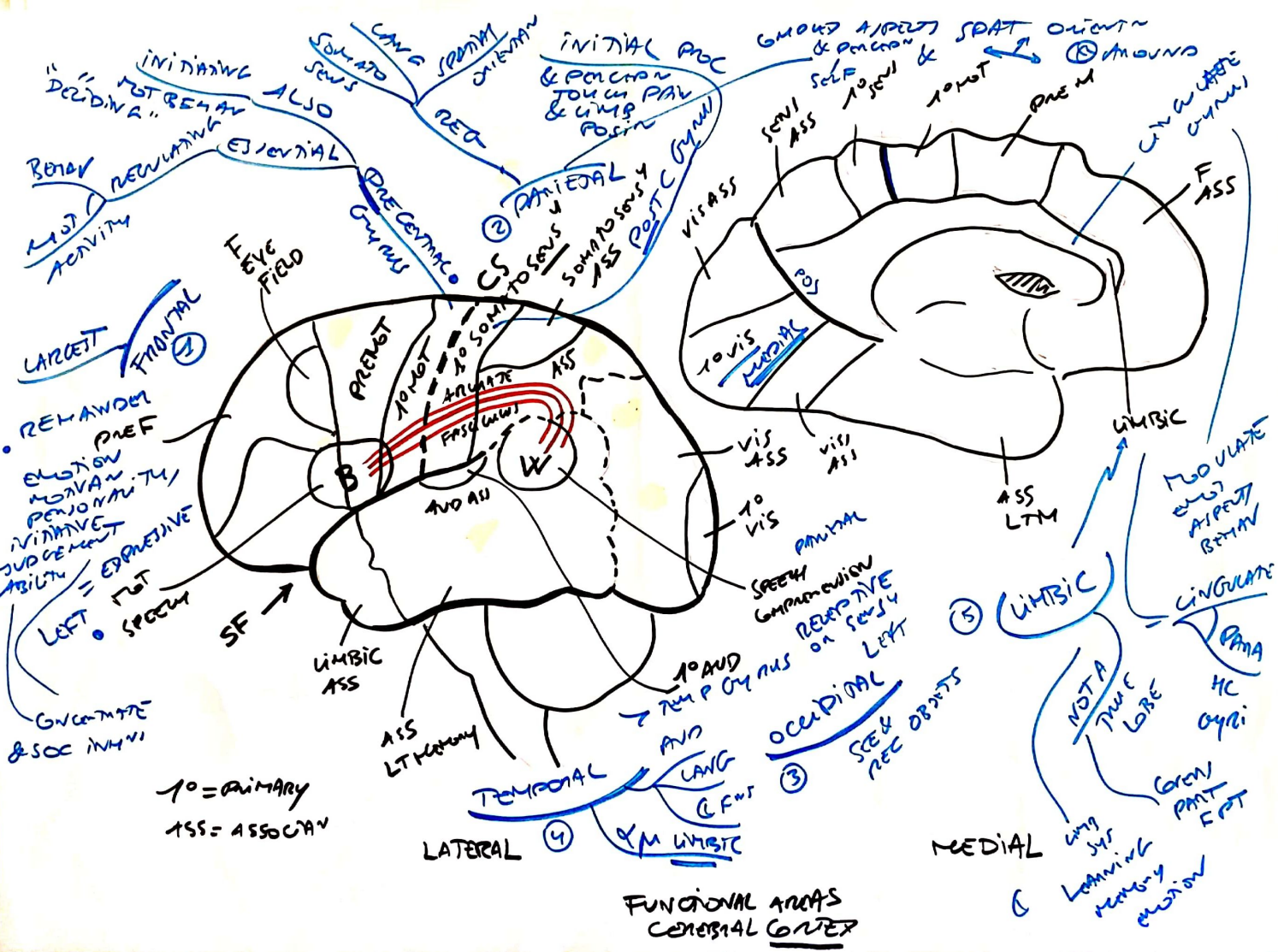




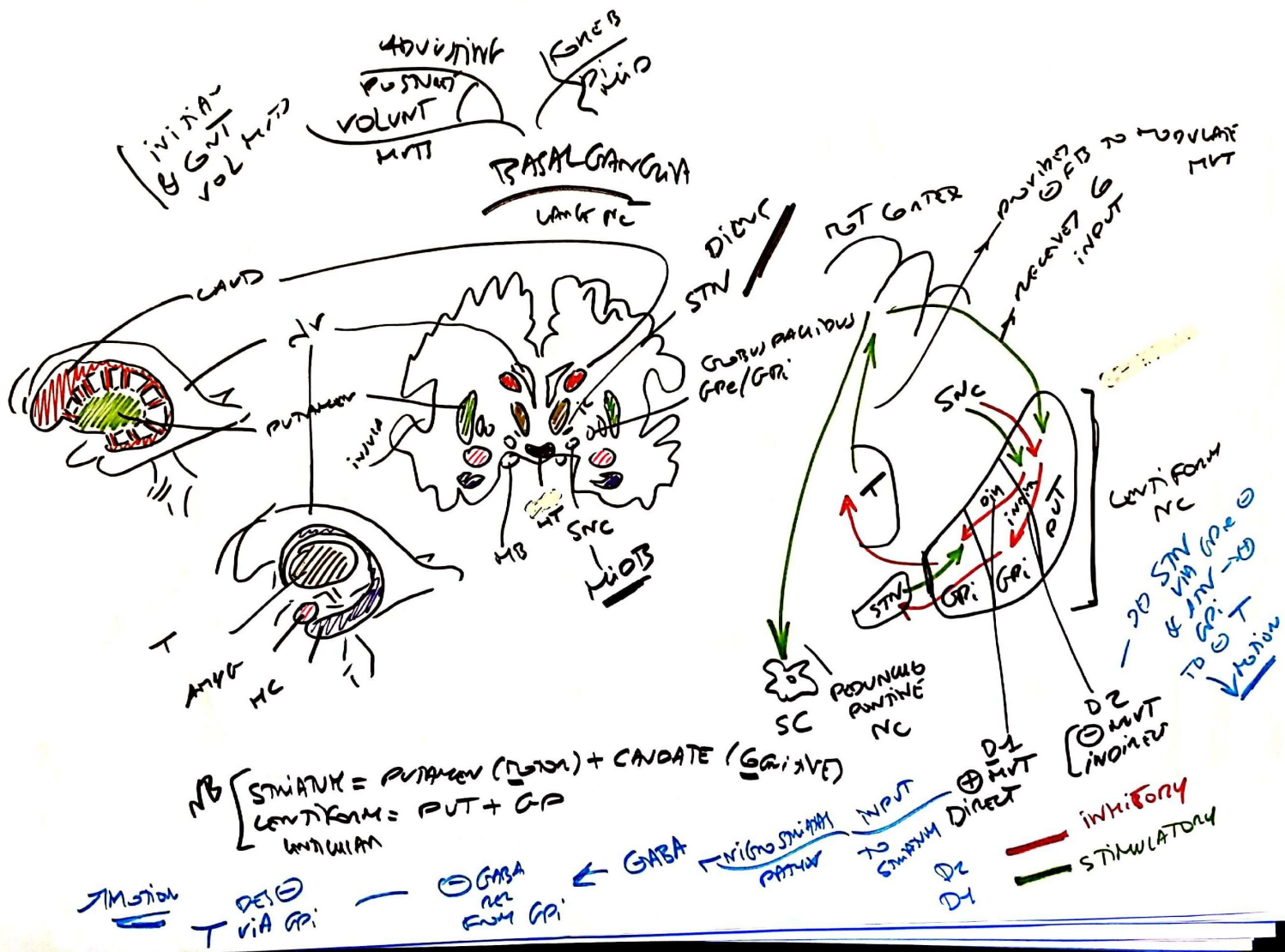
+  
 SUTS (Sulci)  
 F P T O  
 L  
 (riplet + Groove = SULCI)  
 FISSURES  
 N

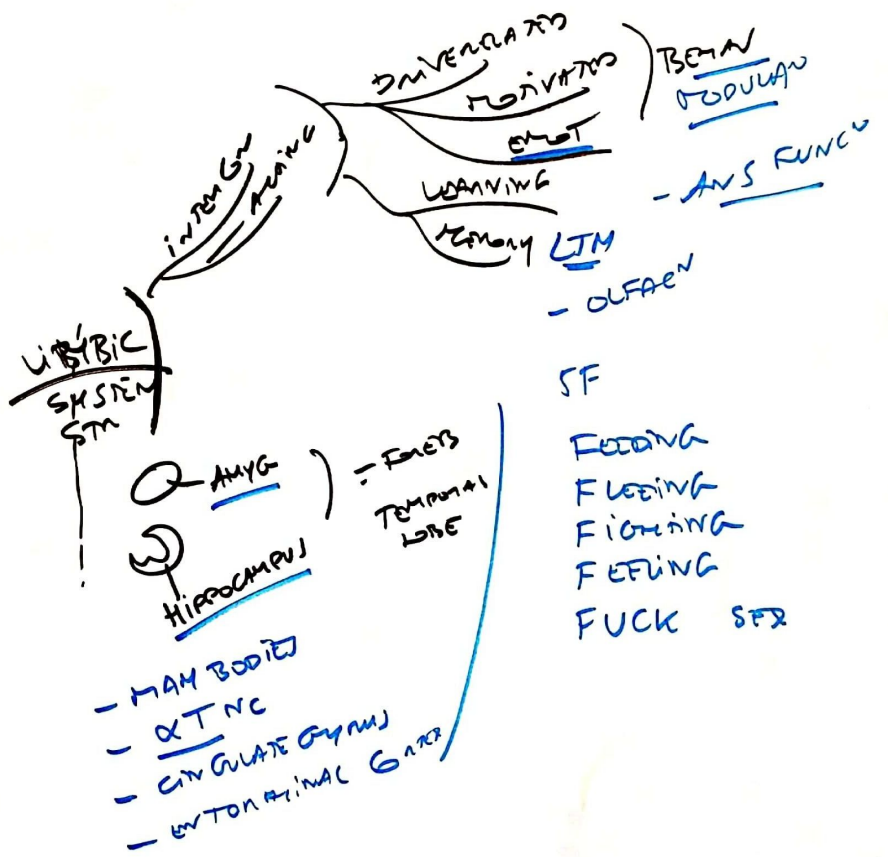


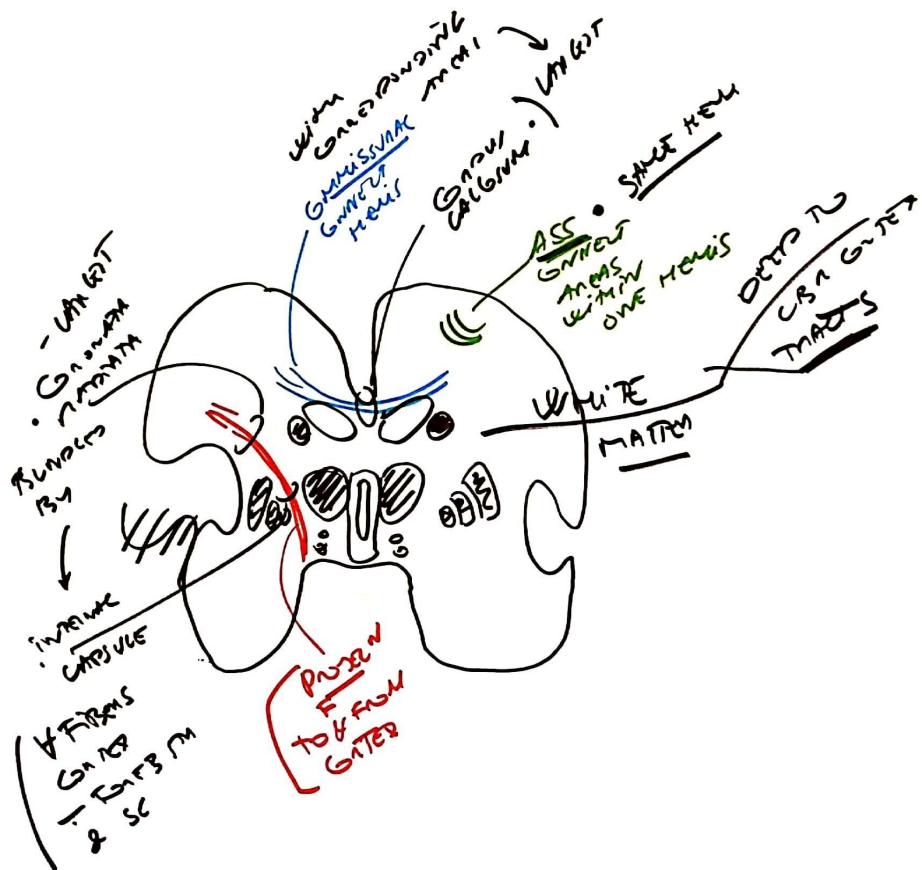
CBL hemis  
 HAS sulci & gyri CBL



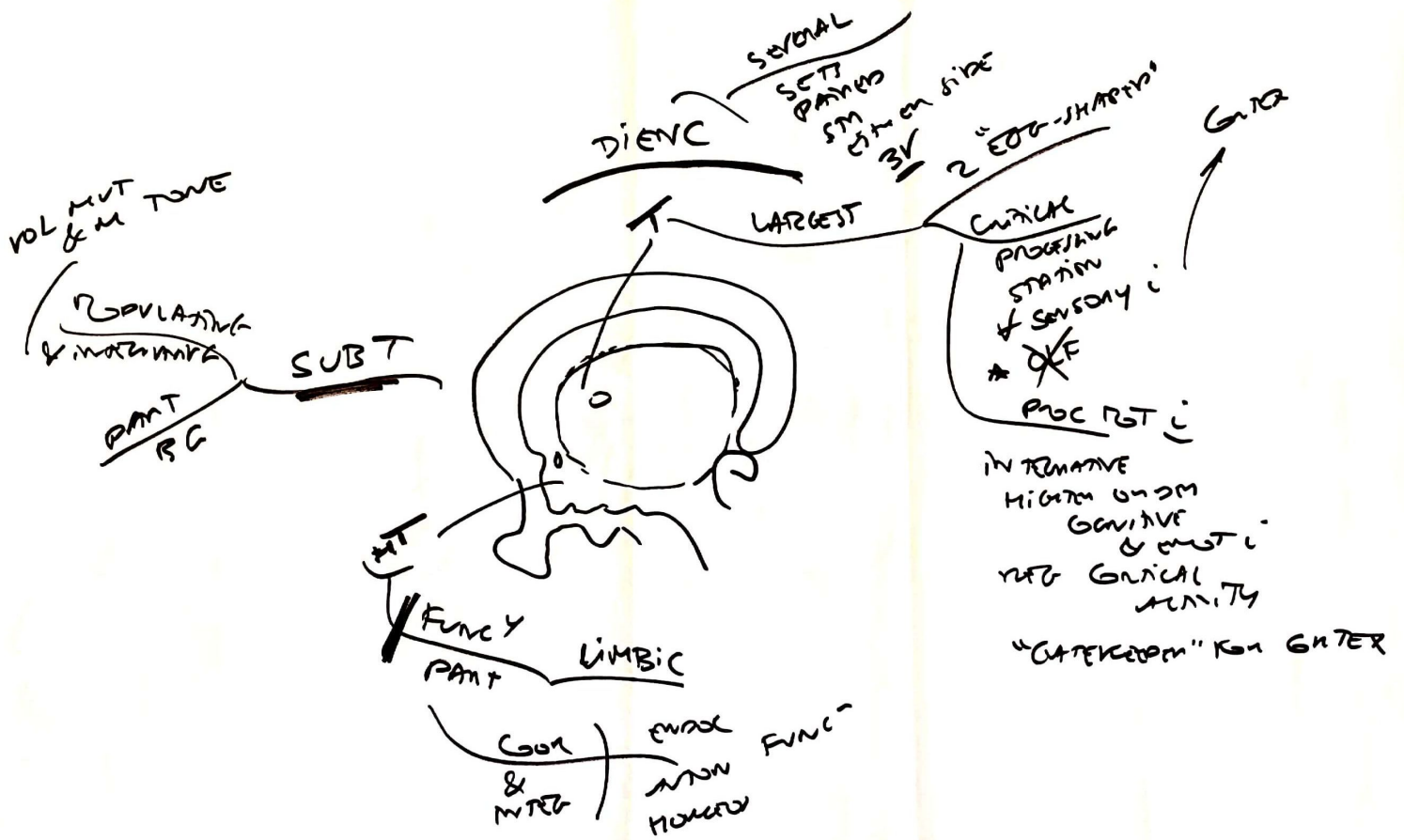




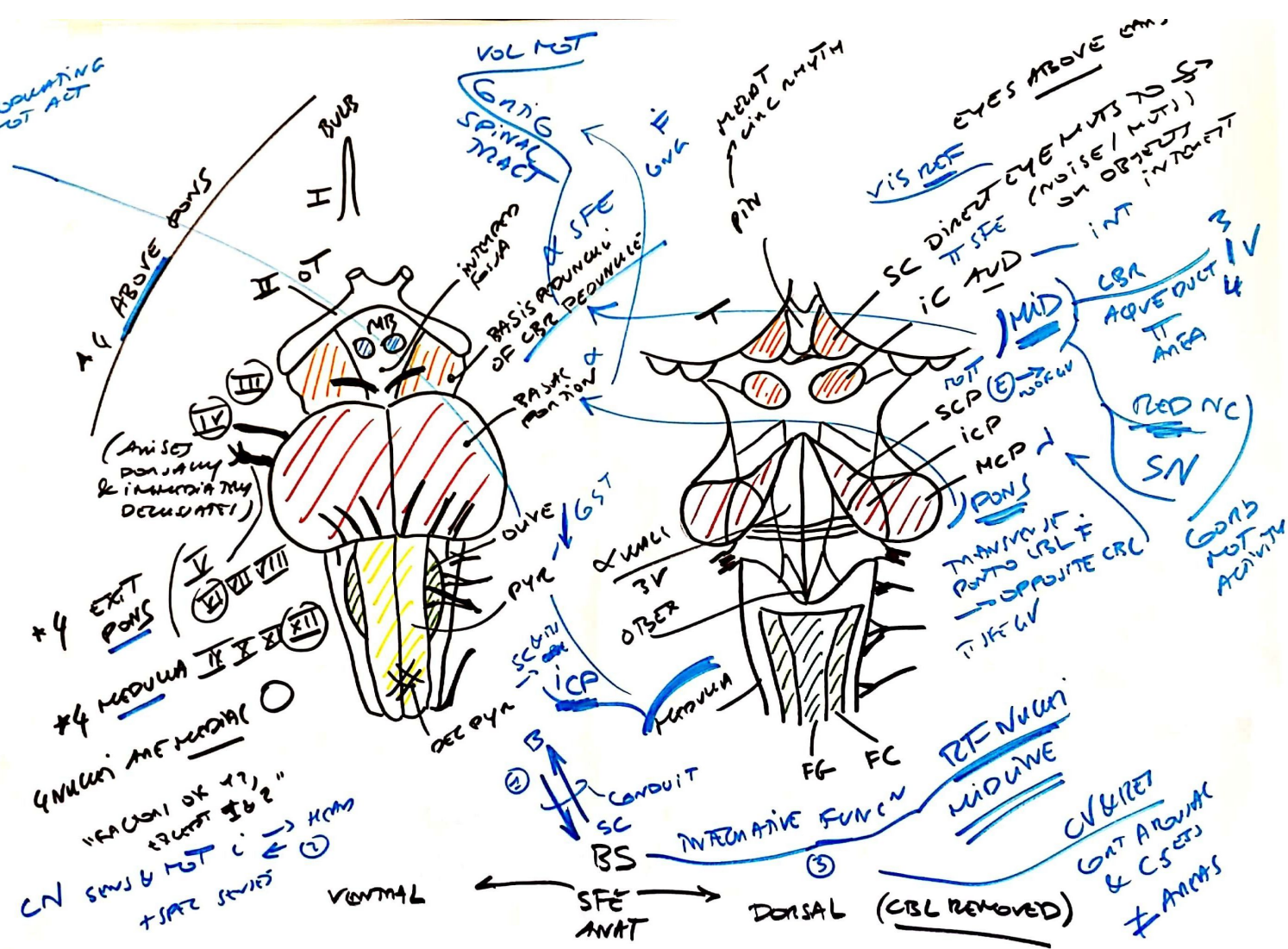




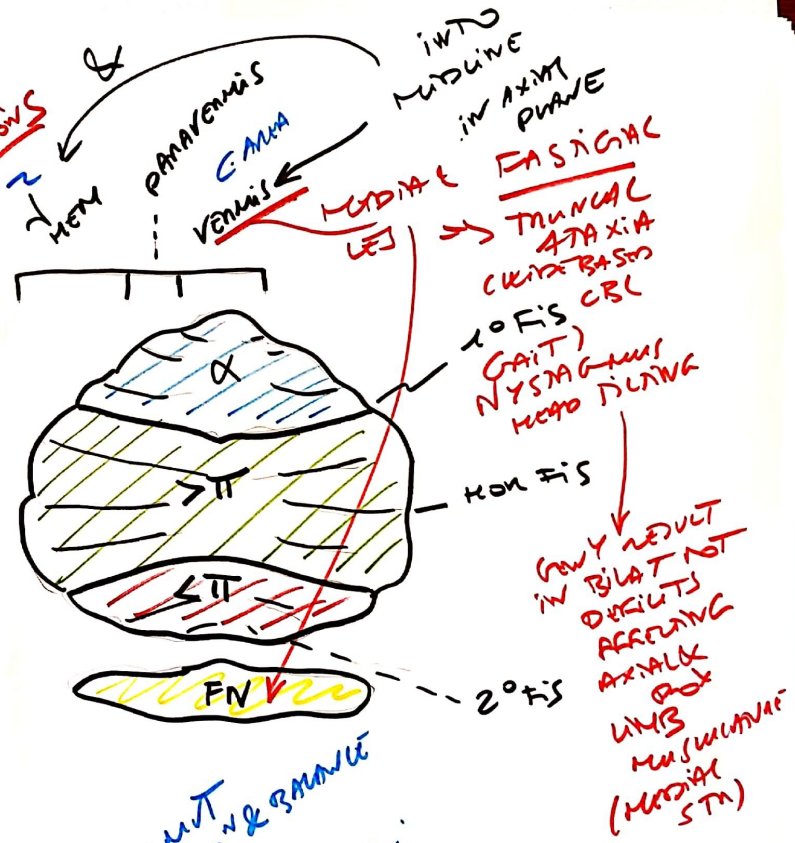
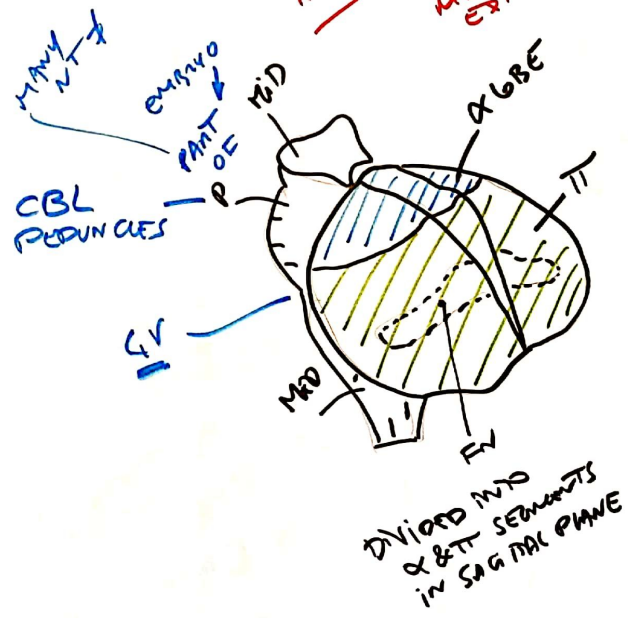
FIBER TYPES WITHIN CNS



MODULATING NOT ACT



When involved  
 propriety ~~fall~~ ~~side~~ ~~down~~ ~~any~~ ~~mult~~ ~~lateral~~ ~~lesions~~ ~~STM~~  
 ipsilateral  
 M/T, M/T, M/T  
 LATERAL LESIONS

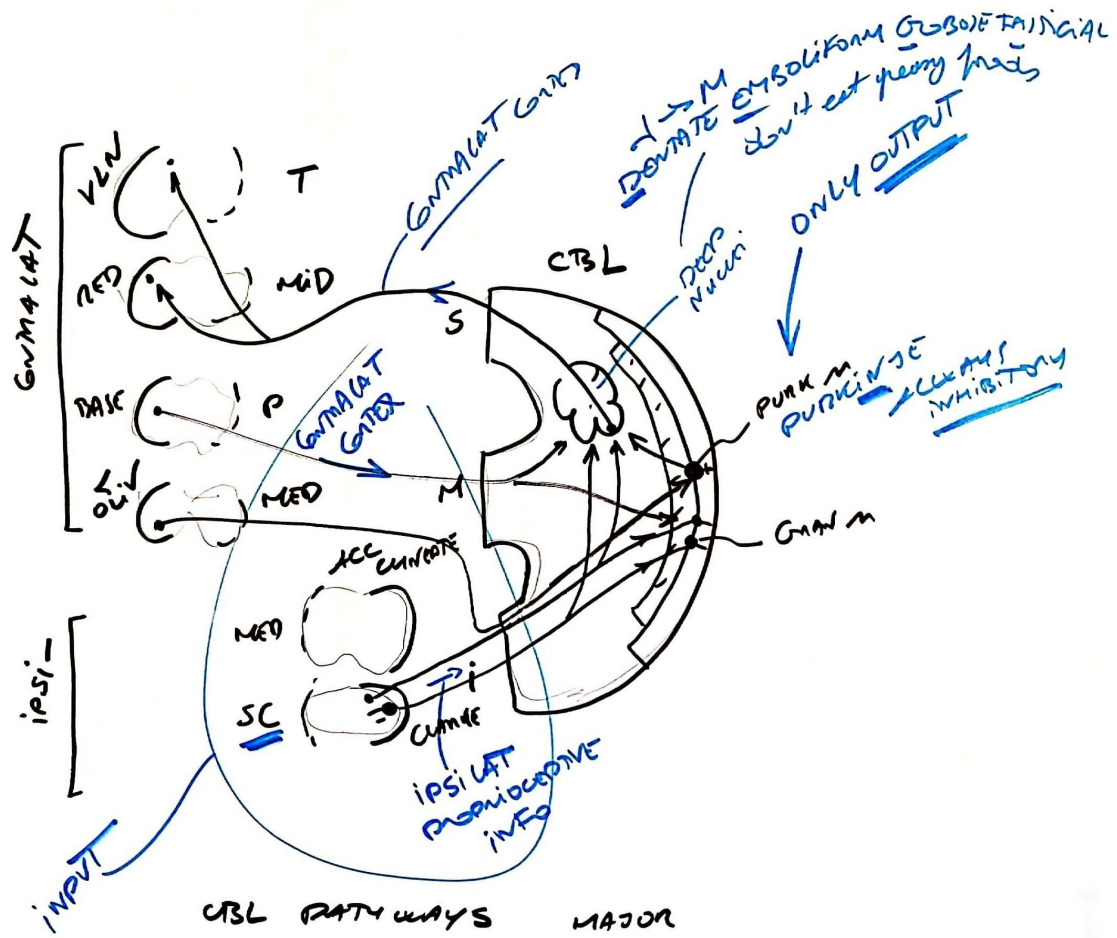


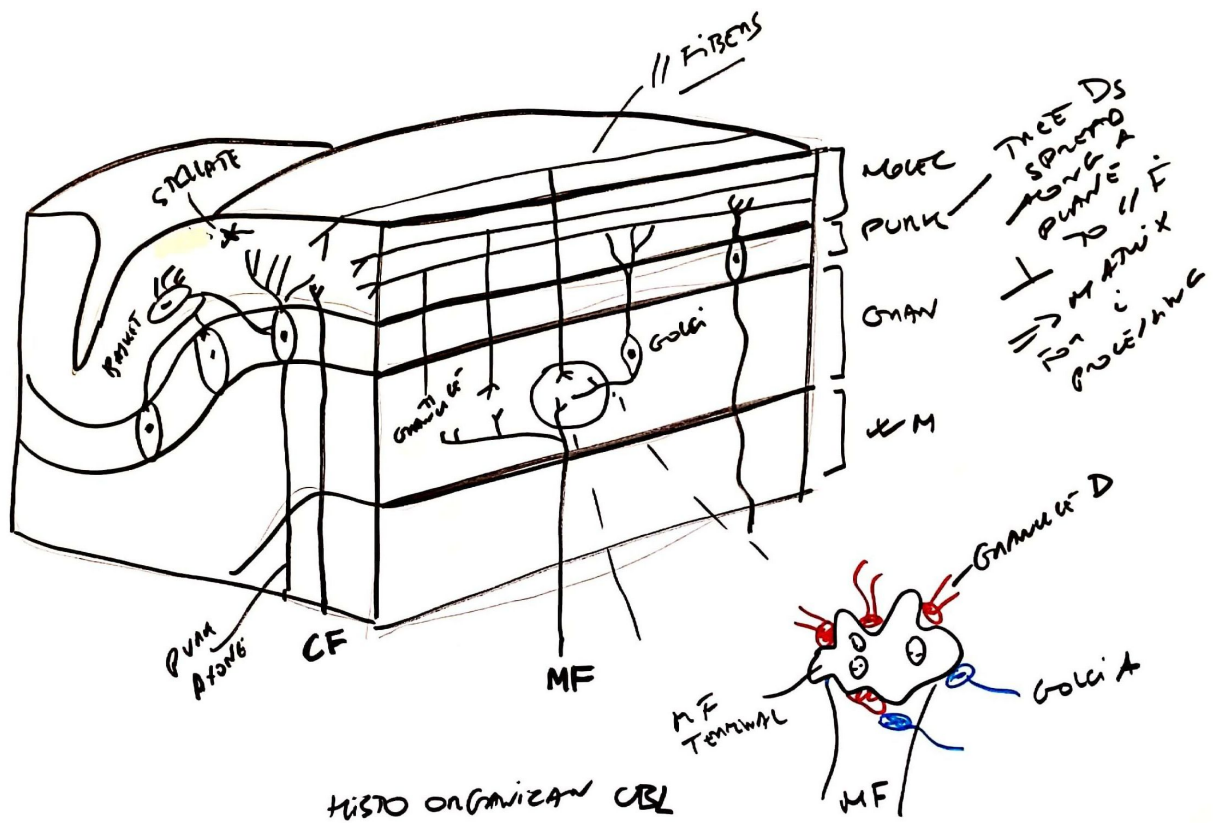
REGIONAL ANAT CBL

FLUOROPES MIT ABS GOND & RAMULI

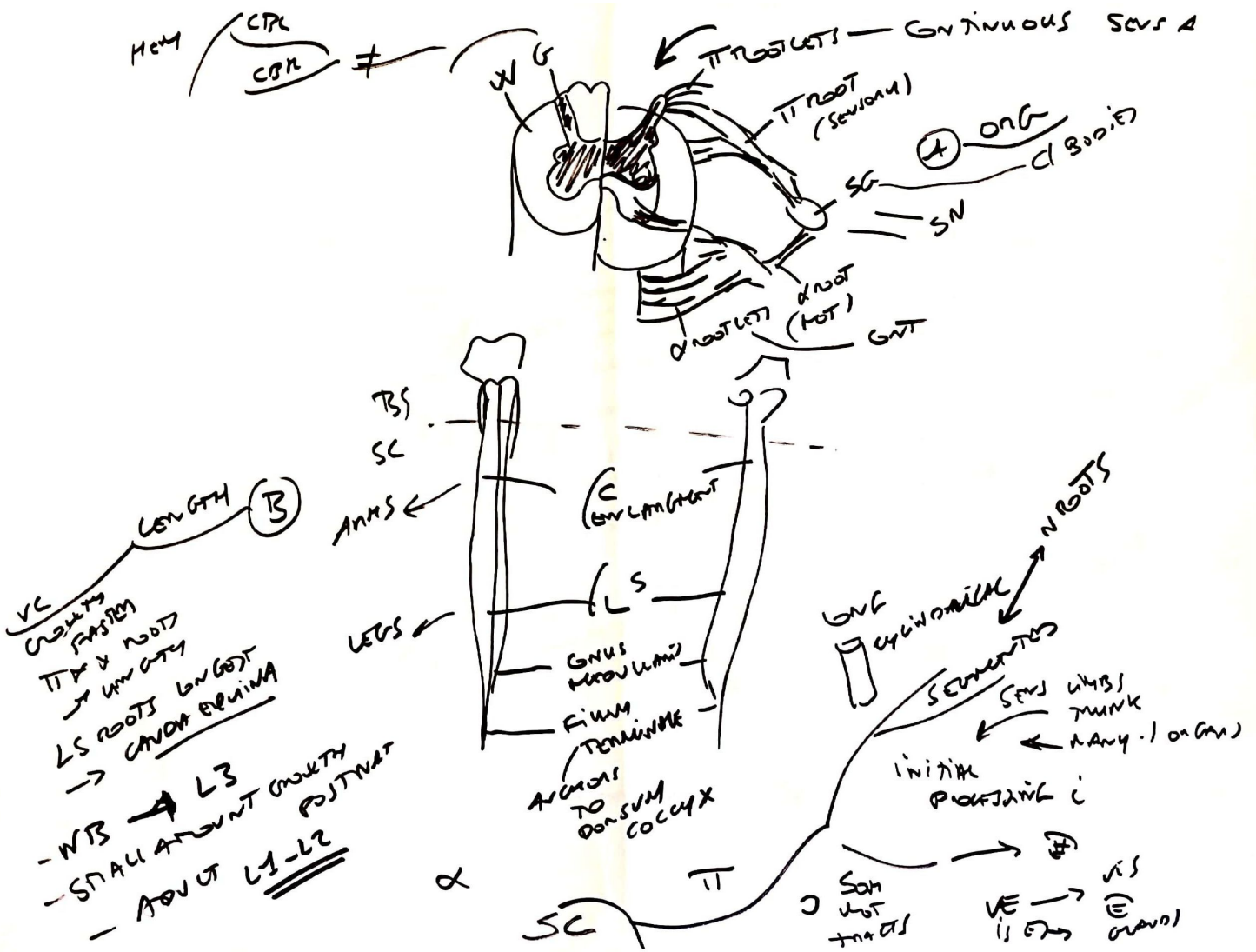
POSSESSING SENS & CON VOL NOT ACT

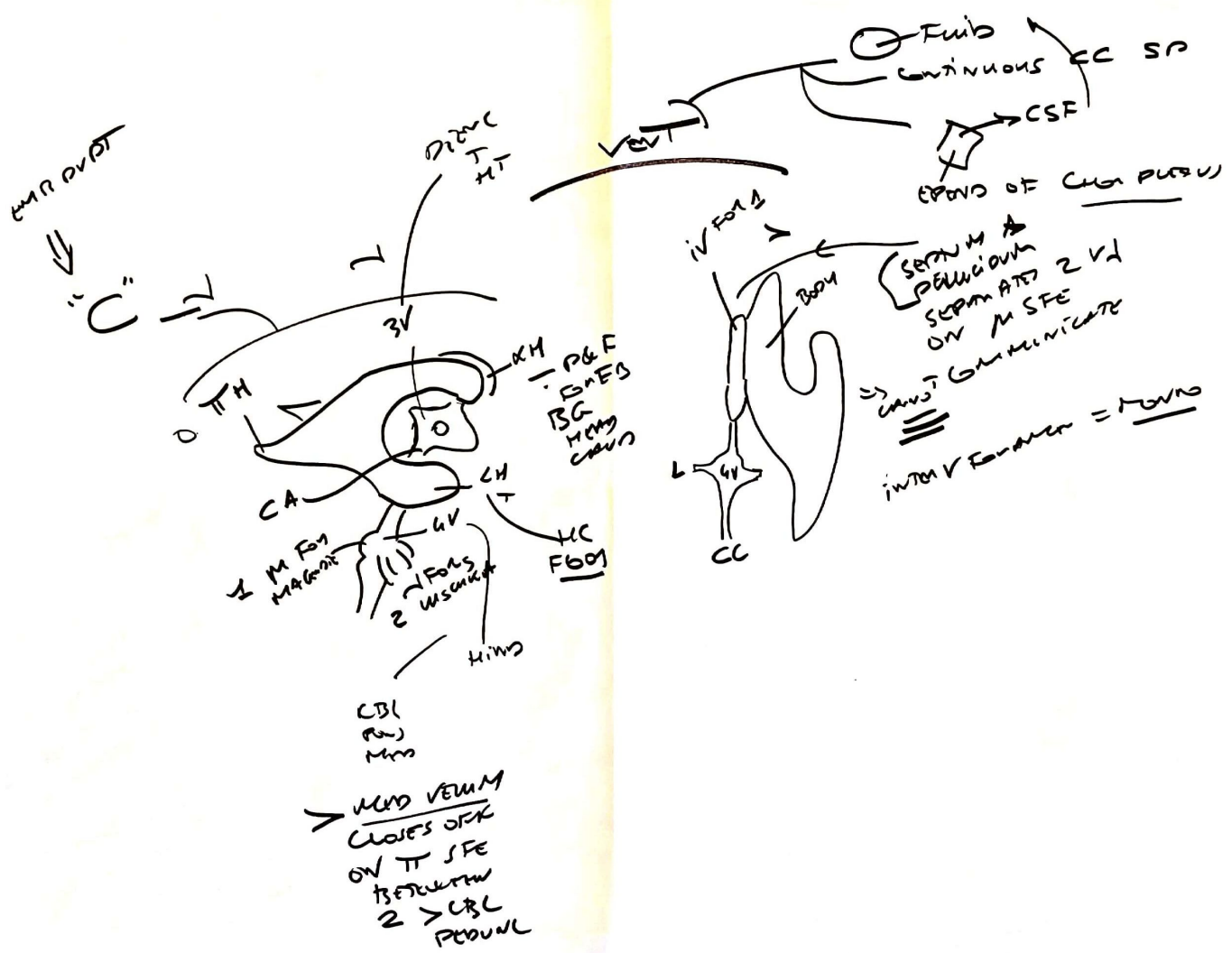
COGNITIVE











≠ SPECIFIC GRAVITY  
 TB & CSF  
 ⇒ APPARENT  
 WEIGHT TB  
 ⇒ LYMPHIC SYST  
 SAMPLING  
 PERIVENTRICULAR  
 COLIC CHANNEL  
 CAN  
 NT SCOT  
 INTO VENT SYST  
 WIDE SPREAD ⇒ TB  
 - CENTRICALLY  
 DRUGS INTRA THEORALY  
 DIRECTLY INTO  
 CSF - FLOW SPACE

SUPPORT  
of cushion



CSF

③ ACARS N

BLANKET - FEV EVOST  
 OF CALOR AA - 1  
 - PIAL - 2  
 - SPEC OS CAPD

150 mm SHINE

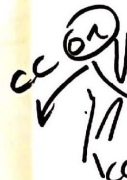
① PRODUCE N

MAINLY  
 PC  
 SOME TB  
 2d  
 1-3V  
 1-4V

FIV TUBES

② CIRCULAR CONTINUOUS HANDIALLY REPT. MOTOR

ACTIVE CHAMP  
 + ARGUMENT +  
 POSITIVE & DIK H2O  
 TO = OSK  
 ⇒ PLASMA  
 ≠ 500ml/D



MAGNIE-1 & USKHA-2

CHECK AGAIN  
 UP  
 4-4  
 TTY  
 AROUND  
 SC

CISTERNAL  
 MAGNIA  
 SAMPLE  
 IF SPINAL  
 TAP  
 POSITIVE

7H4  
 P-Q  
 7H4  
 5⊕

CSF	Se (A)
7.33	7.41
60mg/dL	90
0.035g/dL	7
TBTmF4/L	=
2.8	5

