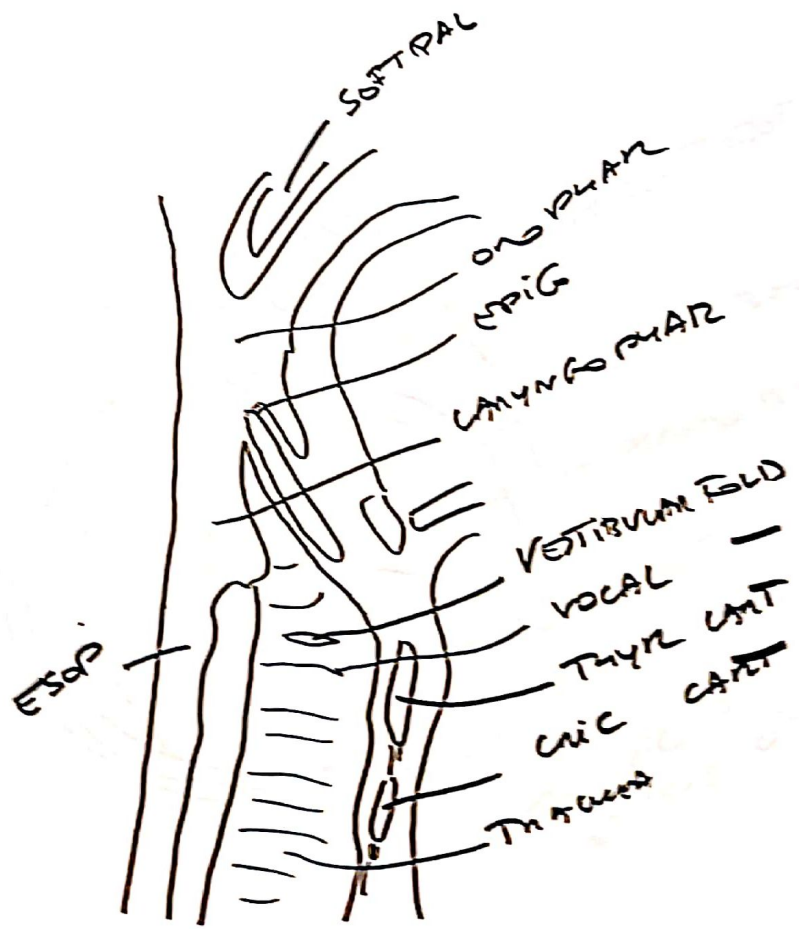


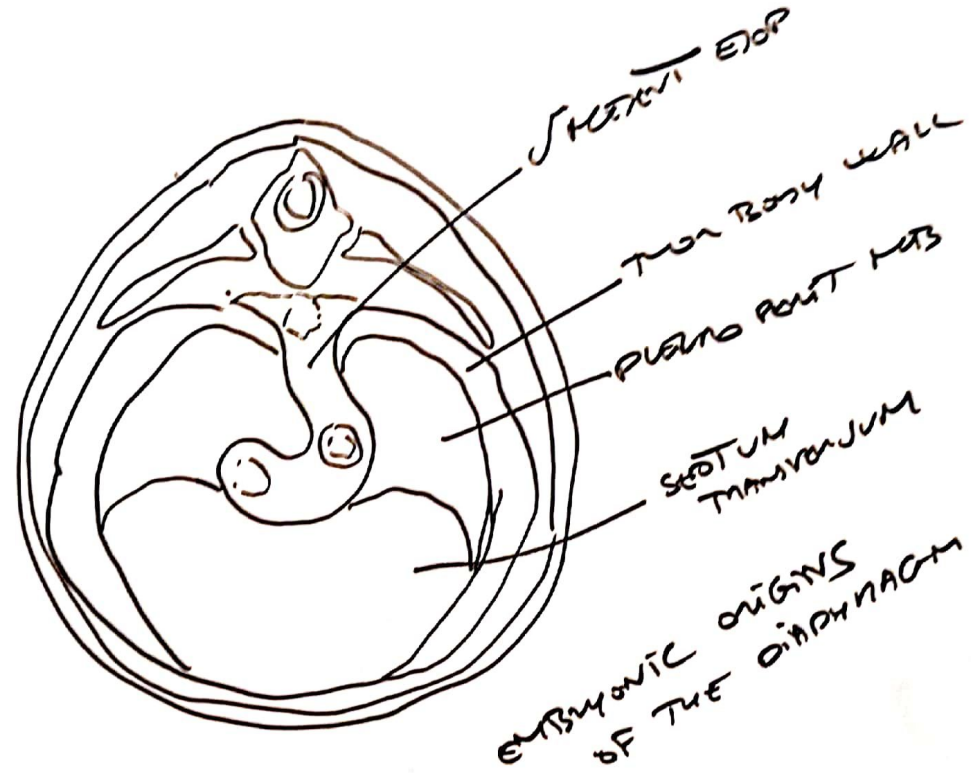
MALLEUS
 INCUS
 STAPES
 → EAR
 → EAR
 → EAR

EPIC SWINGING
 → EPIC SWINGING

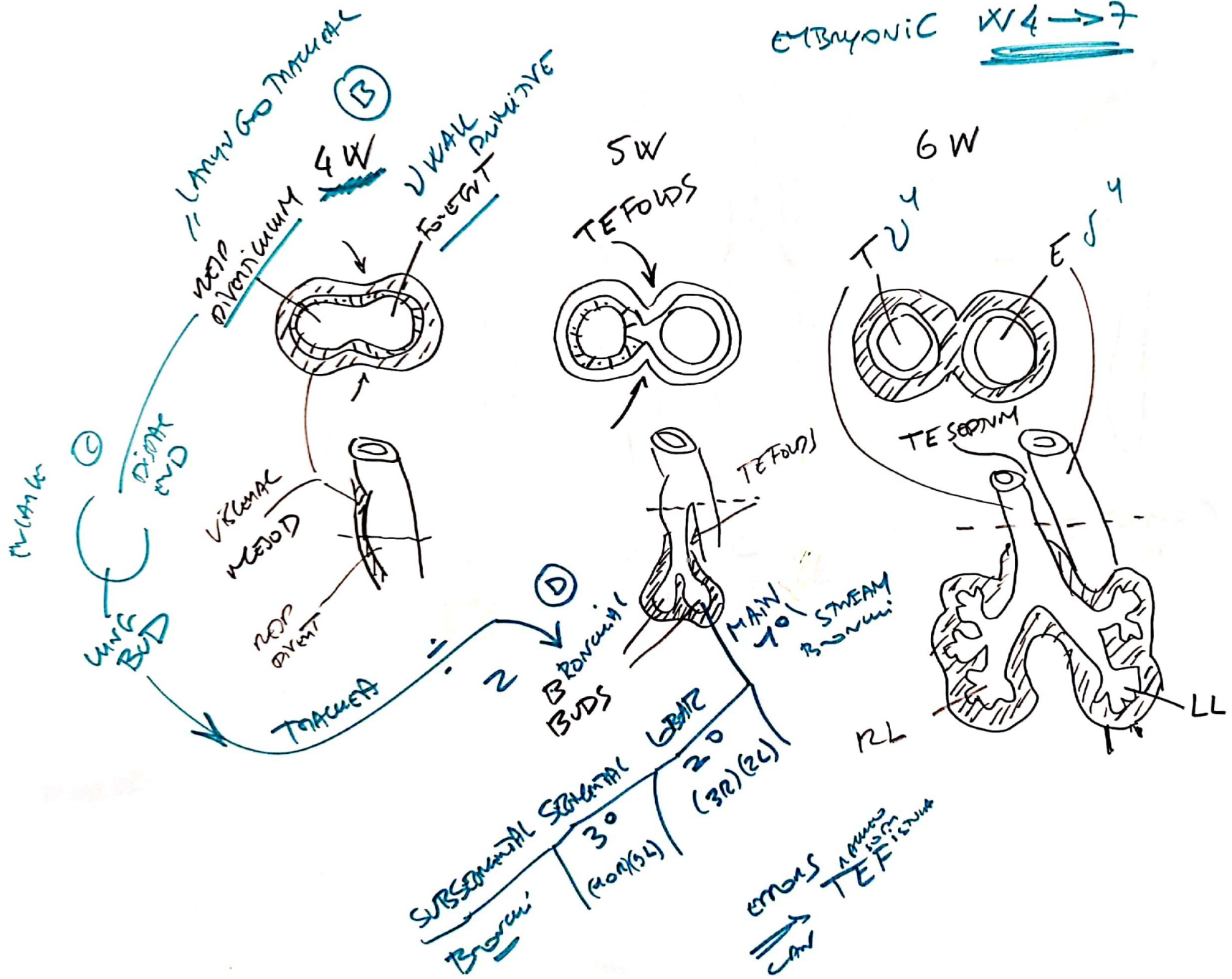
ANTI-MALLEUS SWINGING
 → ANTI-MALLEUS SWINGING

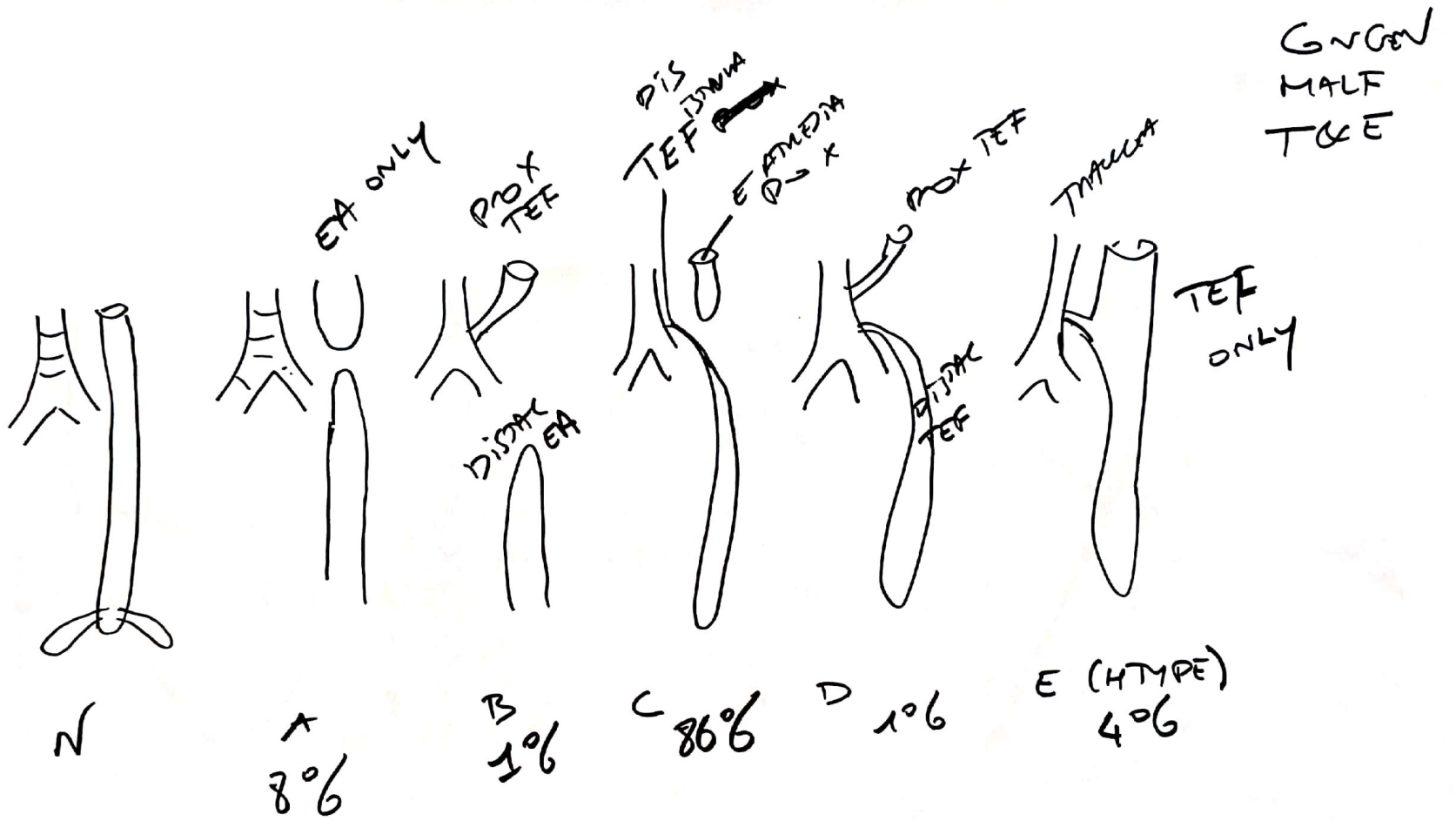
MALLEUS OFFICE



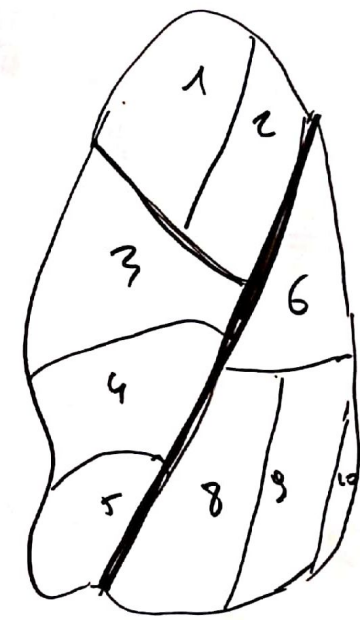
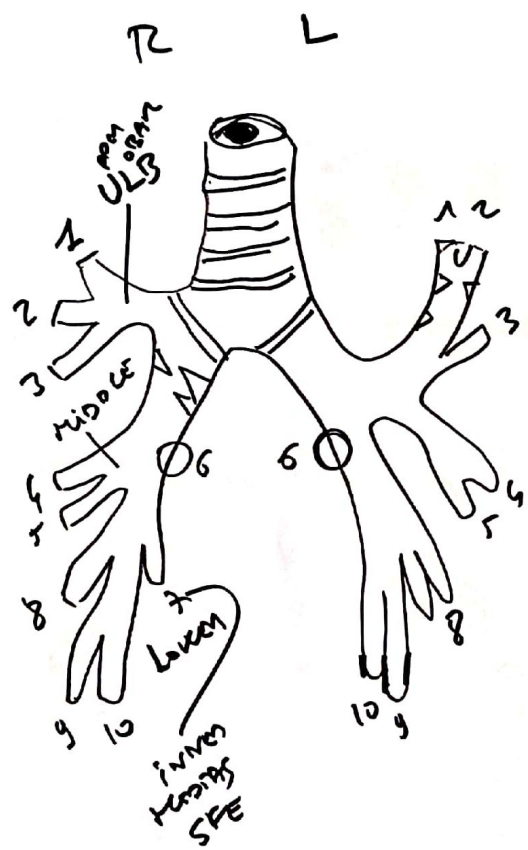
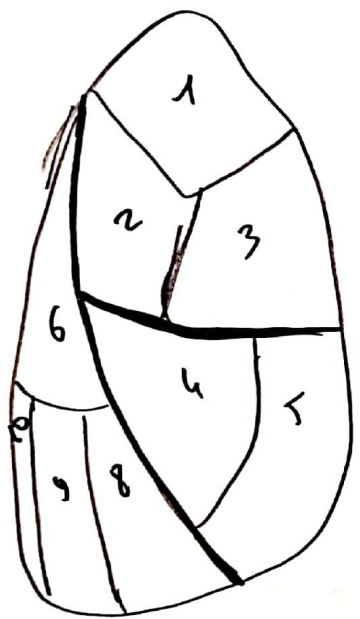


EMBRYONIC W4 → 7





DISTRIBUTION
BP SEGMENTS
& R TO TB TREE

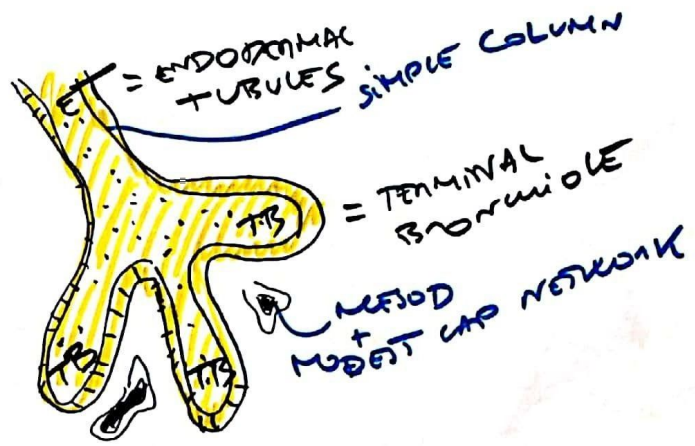
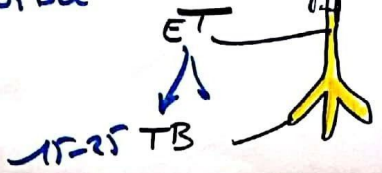


~~No 7~~
SEGMENT B

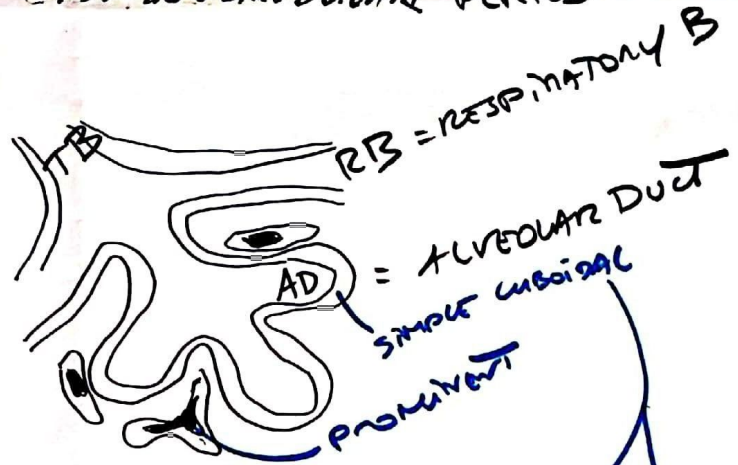
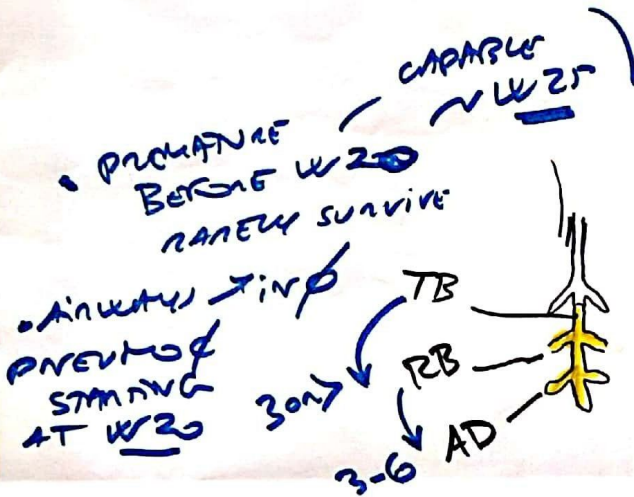
SEGMENTAL
BRONCHI
NUMBERS
TRIPLO
& FUNC 4
SEGMENT
UNITS
SURGEONS

~ EPDC E

- RESPIRATORY NOT POSSIBLE



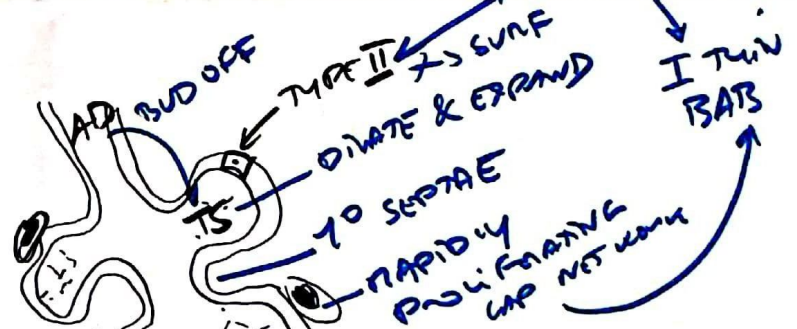
PSEUDO GLANDULAR PERIOD 3-16



CANALICULAR

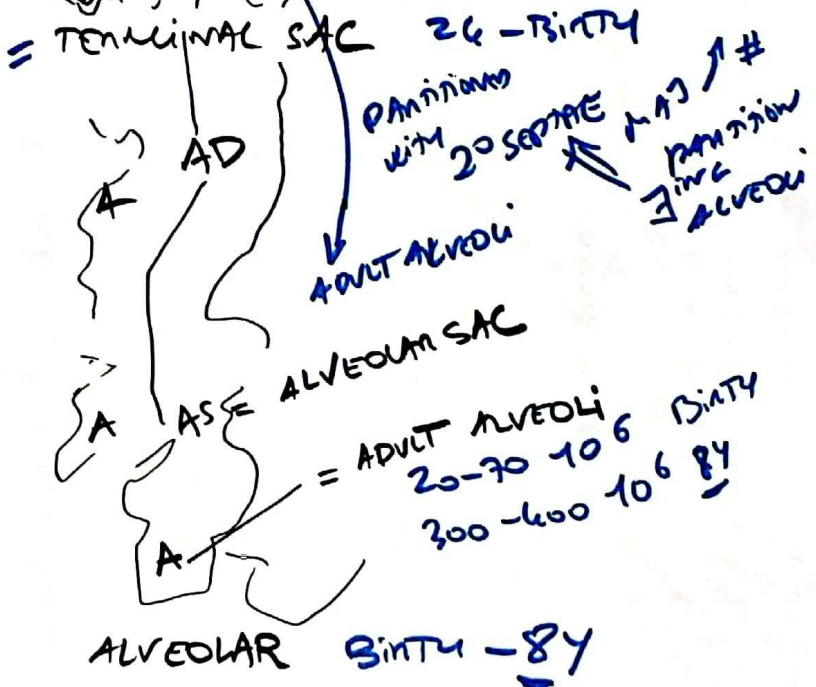
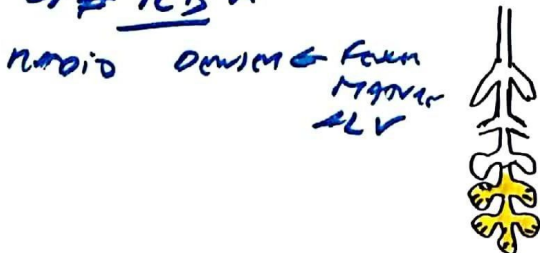
16-24

25-28 SURVIVE + INTRAVASCULAR CANALS
A DEGRADE VASCULAR & SURF JUST INTO F



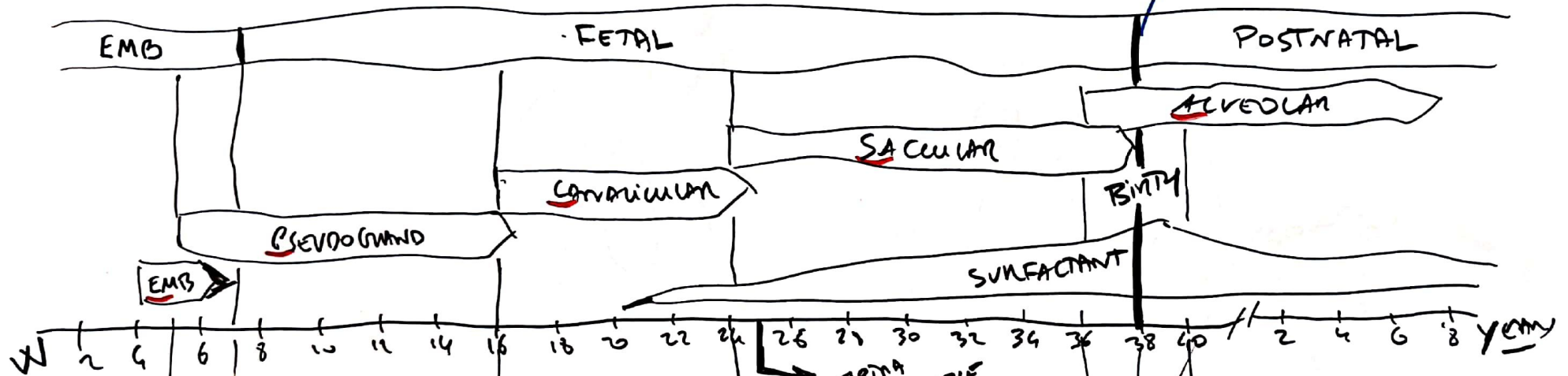
SACCUUM = TERMINAL SAC 24-30
PARTITIONS WITH 20 SEPTAE → # PARTITION 3-4 ALVEOLI

AFTER 30 → SIZE GROW
→ # RB

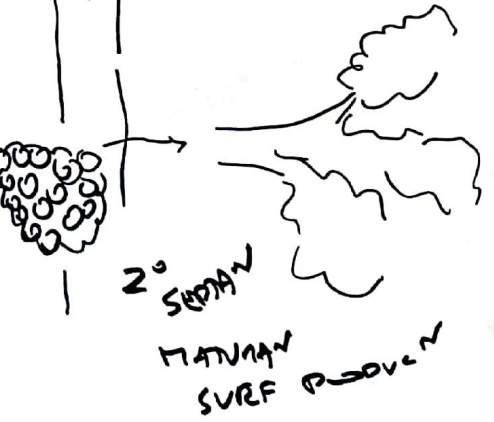
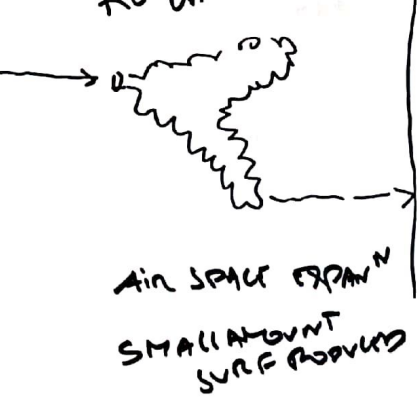
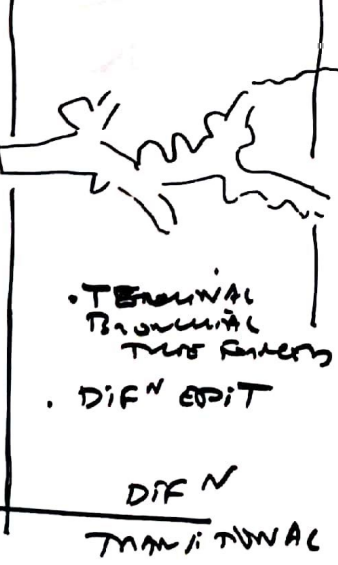
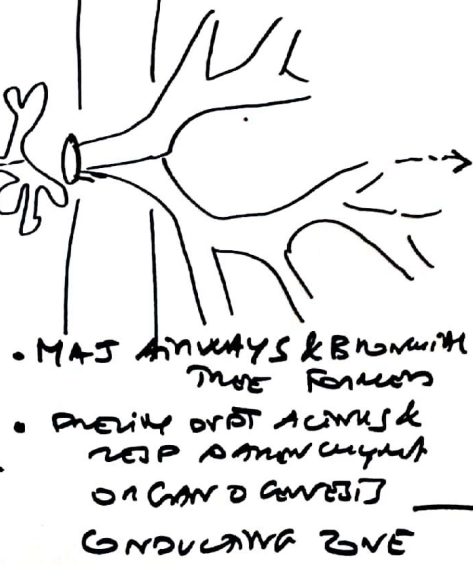


"BURNING"
 & EXPAN'N HF
 TUB' & VASCULAT'N
 RETAN

AN → FUND
 PULM VASC
 RETENT



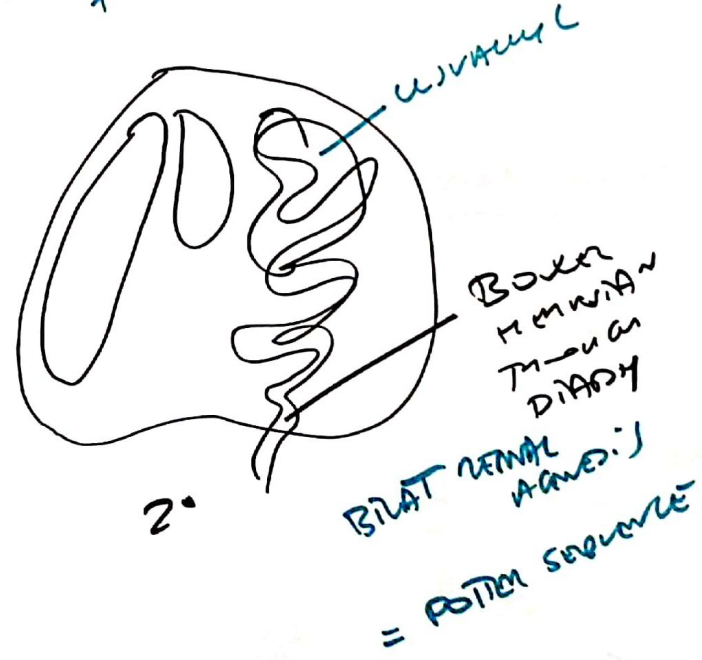
5 STAGES
 1 OF EVERY PULMONOLOGIST
 2 CAN SEE
 3 ALVEOLI



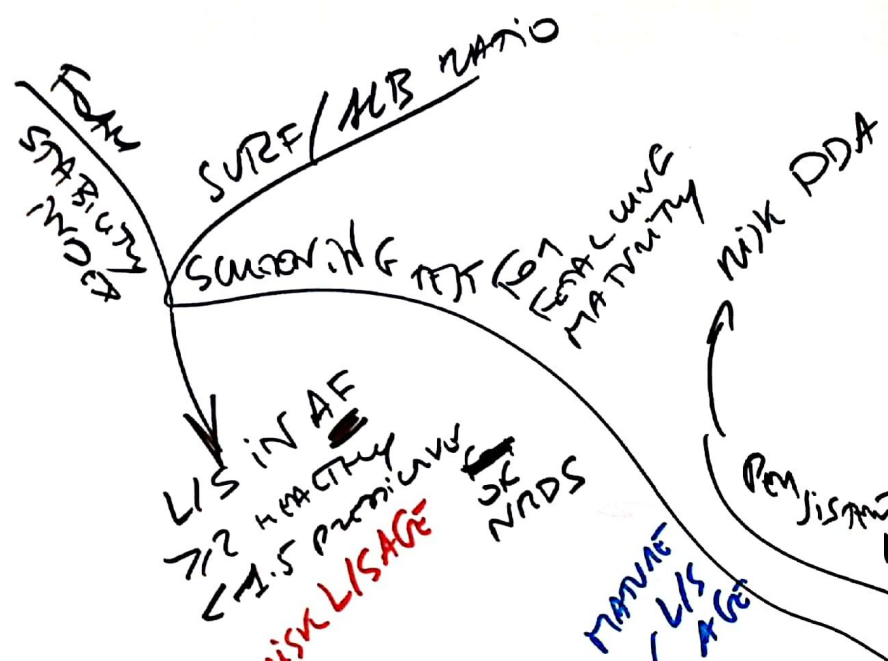
LUNG
HYDROPSIA

& CD Hemorrhage
organ

poorly
developed
+ or without



NEONATAL RESPIRATORY DISTRESS SYNDROME



[] m []

