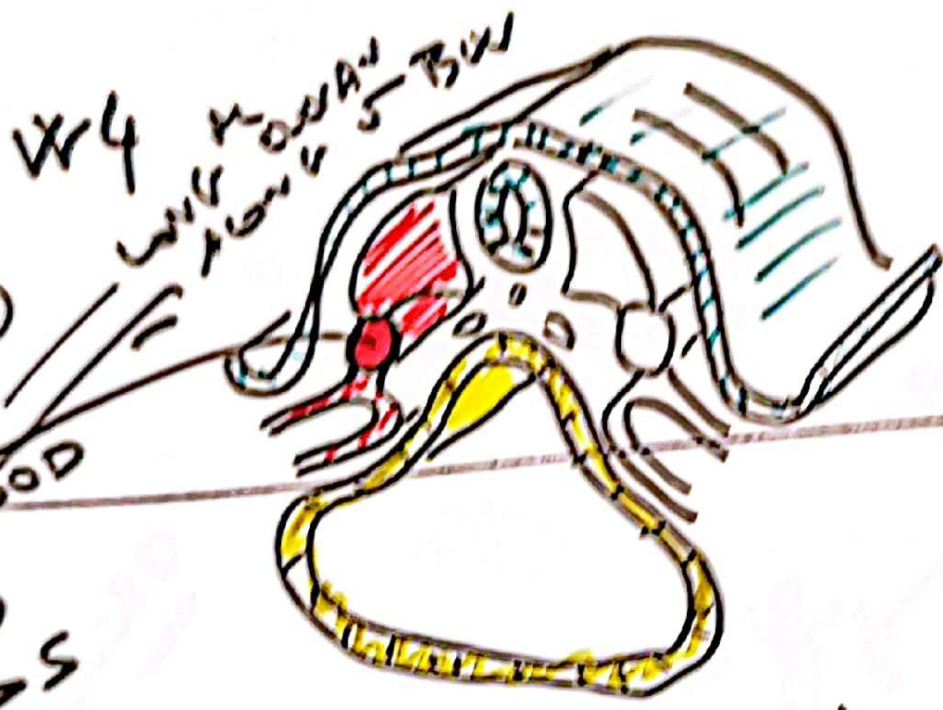




URIN SYSTEM  
 (I) OVERVIEW



(3) NEPHROGENIC

IVAR  
 GAD  
 C → S

PORTION UROGEN  
 RIDGE

(2) 350'S  
 NEURAL ST

REMAINS  
 GROWTH IN U/S

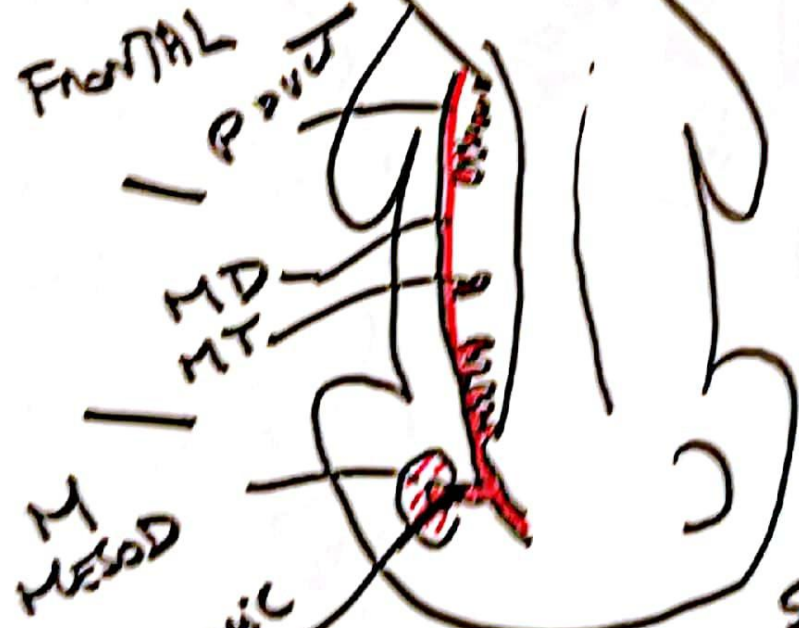
FRONTAL P TUBULES

CERVICAL

PRONEPHROS (II)

TUBULES  
 DUCT

FRONTAL P TUBULES



MEIO (III)

META (IV)

SACRAL

OUTPUT  
 FROM  
 GROWING  
 OF MESOD

D = WOLFFIAN  
 PARANEPHROS  
 TRANSITORY STN  
 POST NEPHROS

TUBULES  
 POSIT. OPEN  
 IN  
 VENTRAL SURF

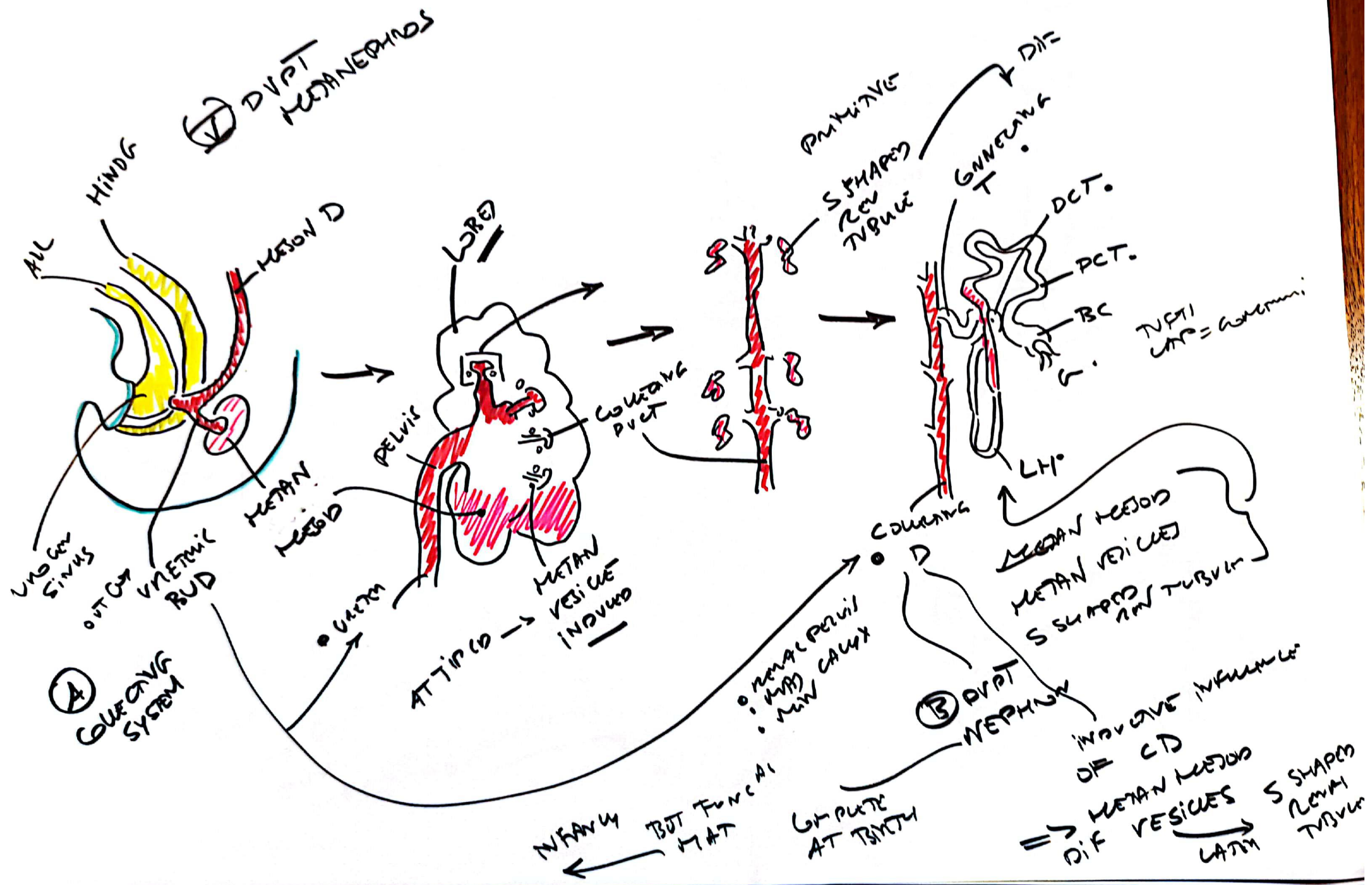
DEFINITE  
 ADULT  
 KIDNEY  
 1 W/5  
 FROM  
 IN PART  
 2 W/10

NEPHROGENIC  
 GAD  
 II  
 NEPHROGENIC  
 MESOD

FRONTAL P TUBULES

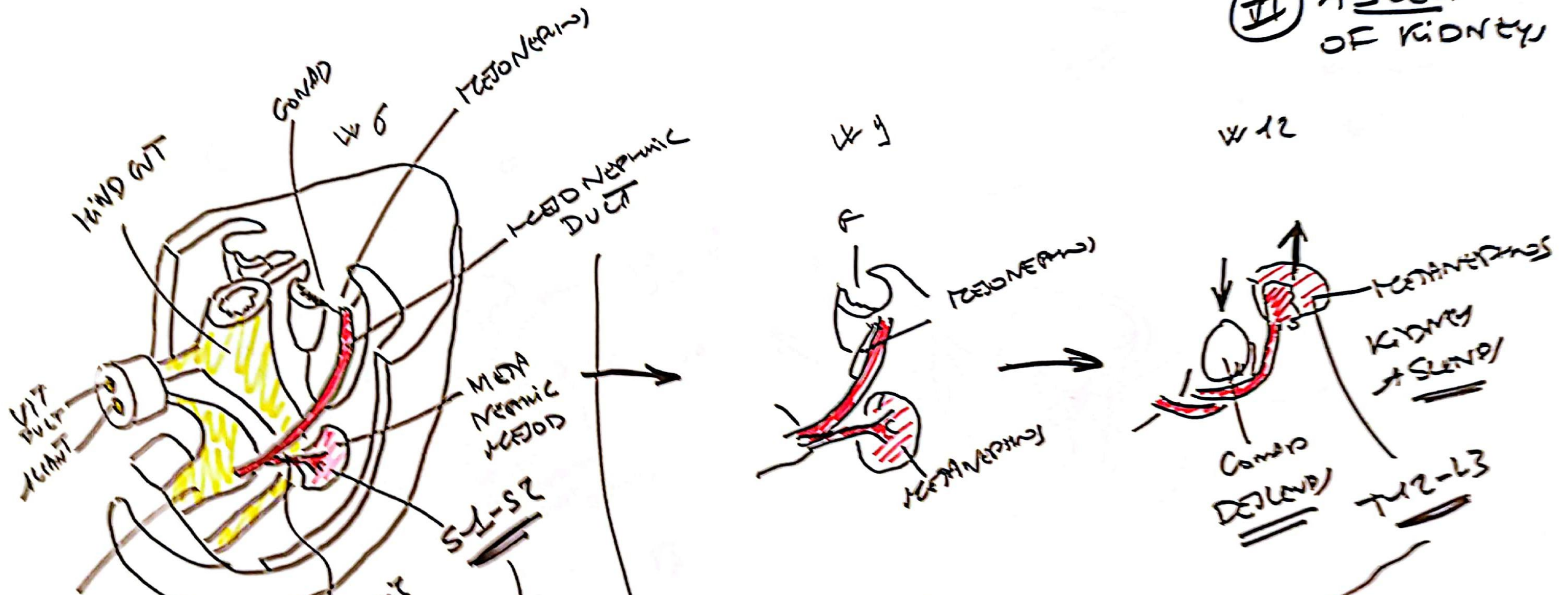


RELATIVE





**RELATIVE ASCENT OF KIDNEY**



**VI** SUPRA-RENAL SUPPLY  
 AT HIGHER LEVEL  
 URETERIC BUD  
 AT L2  
 DURING ASCENT  
 SUPRA-RENAL SUPPLY  
 MAY DISAPPEAR

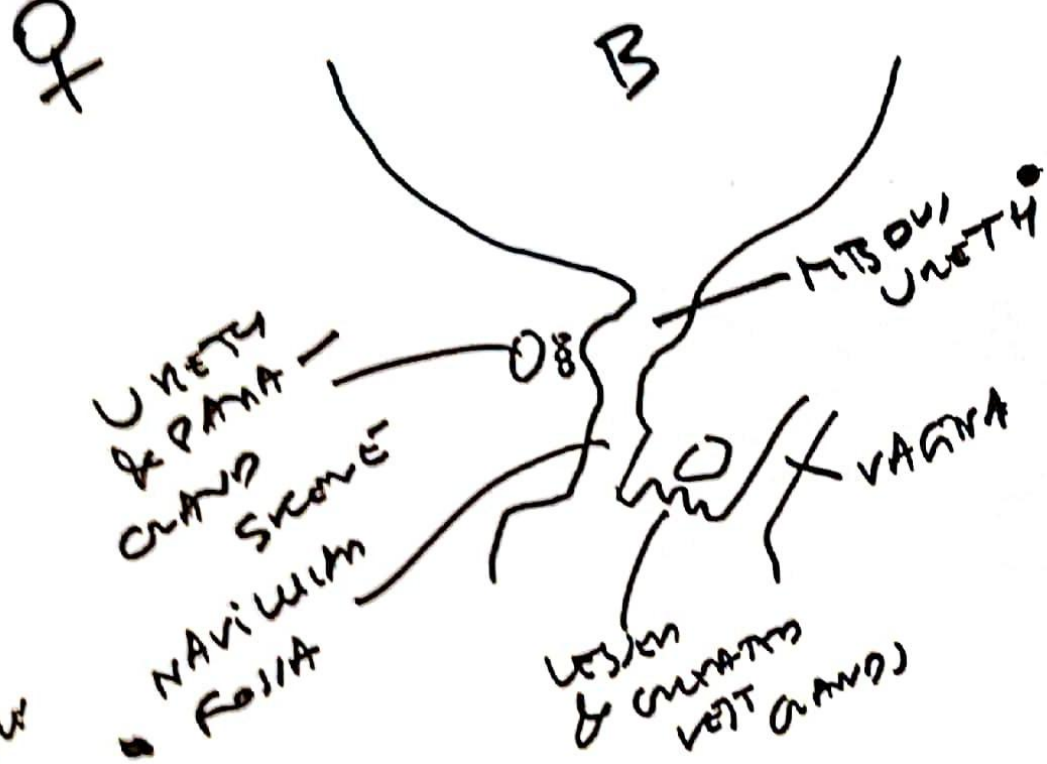
NO CHANGE  
 IN SP. AS  
 BETWEEN  
 AS THEY  
 GO UP UNTO L10

DISPROPORTIONATE GROWTH  
 OF SUPRA-RENAL SUPPLY  
 DURING  
 KIDNEY ASCENT  
 → KIDNEY AS LEVEL  
 T12-L3

END TIP/POLE  
 ON → NEE

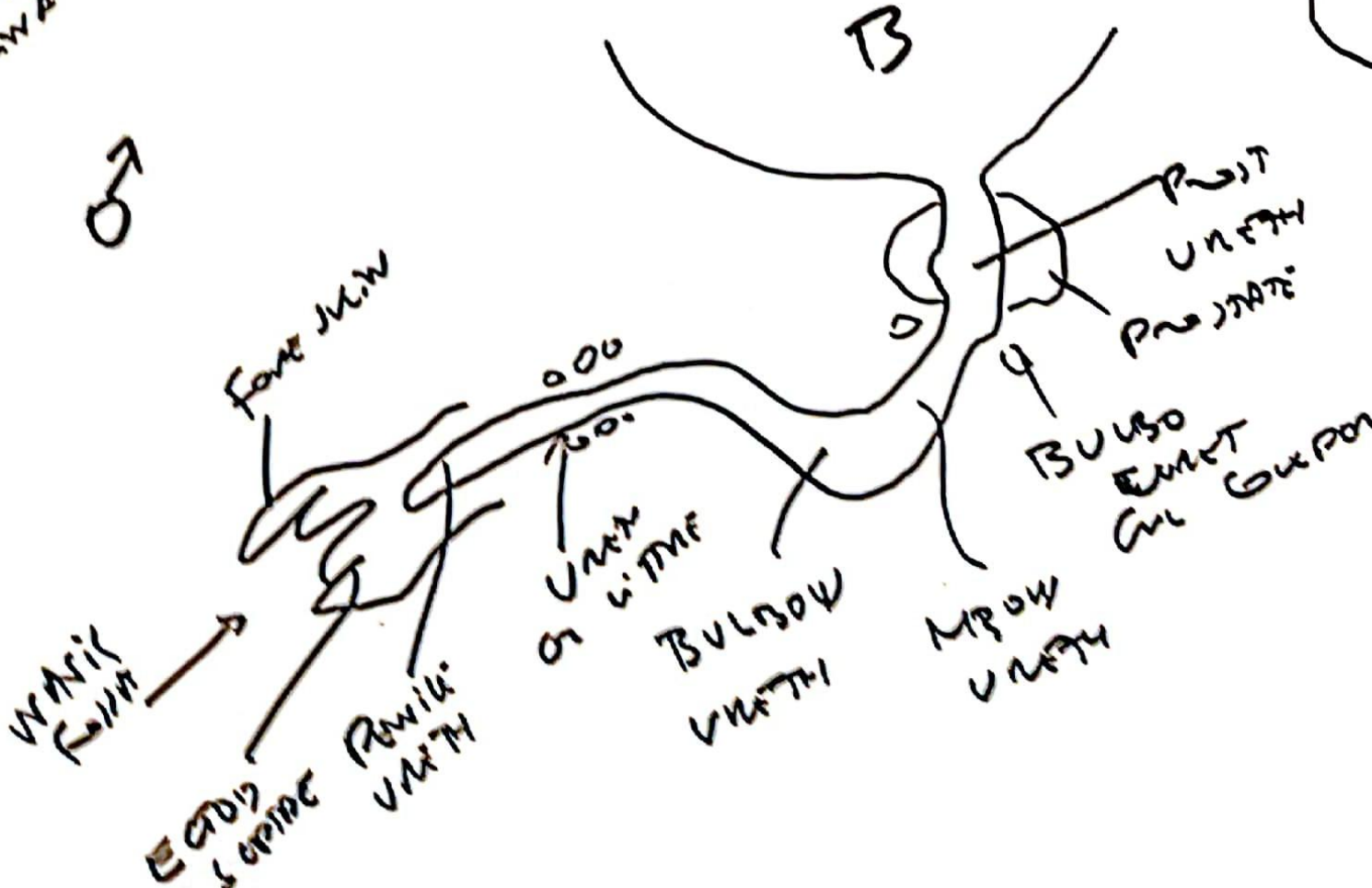


♀



W VAGINA  
VAGINA

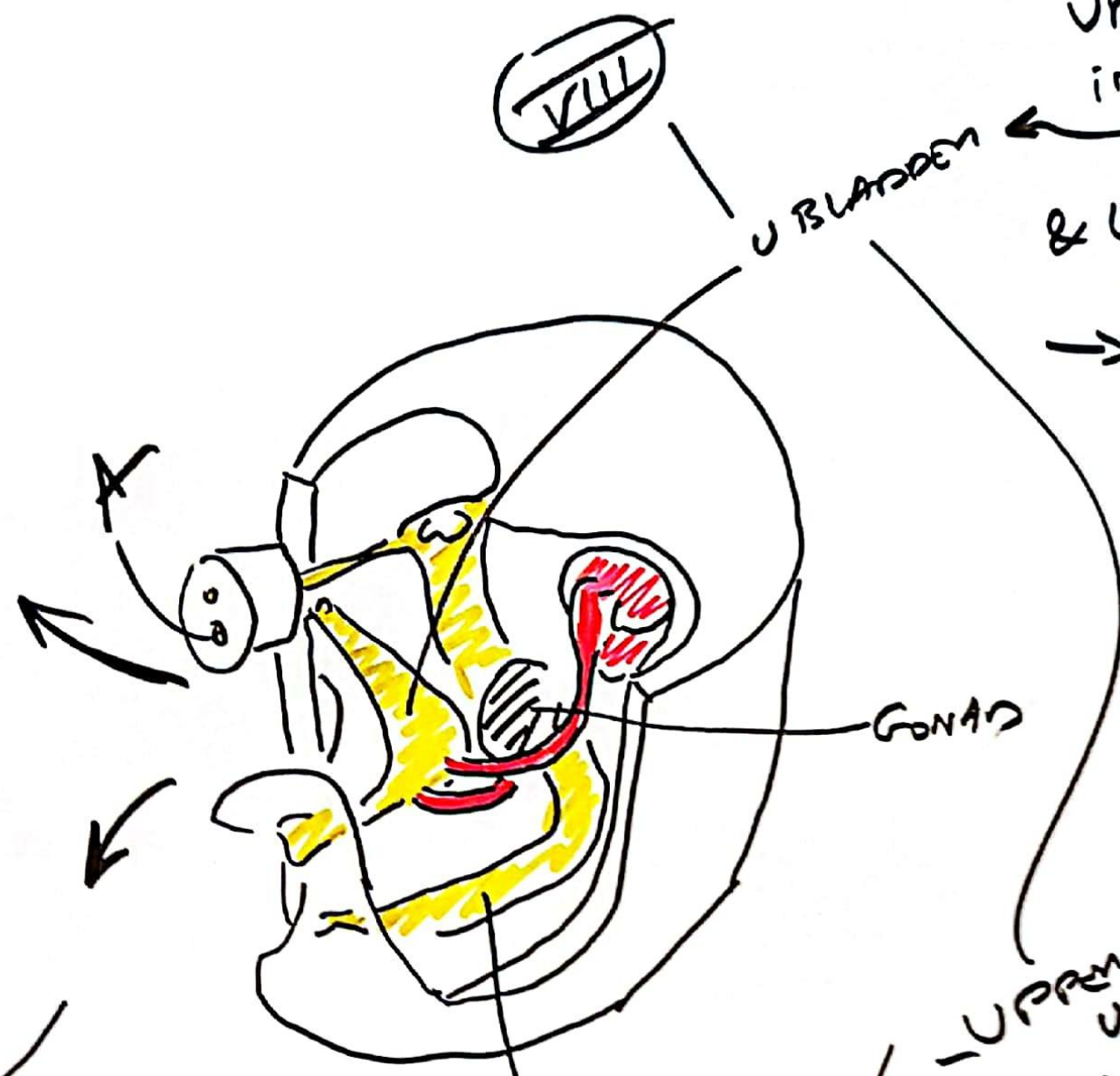
♂



C GERM  
 EVOS  
 MEDON OVID  
 INGNADIM  
 INTO IT WALL  
 OF BLADDER  
 = TRIGONE  
 BLEEDER

DRPT  
 UPPM PORTION  
 UROGENSINW  
 INTO

& LOWER  
 PORTION  
 → ♂ & ♀  
 URETHRA



UPPER PORTION  
 UFS  
 WHICH IS CONTINUOUS  
 WITH  
 ANADIS

FIBROUS GAD  
 = UNALUS  
 = MEDIAN  
 UMBILICAL  
 LIG  
 TOWLT