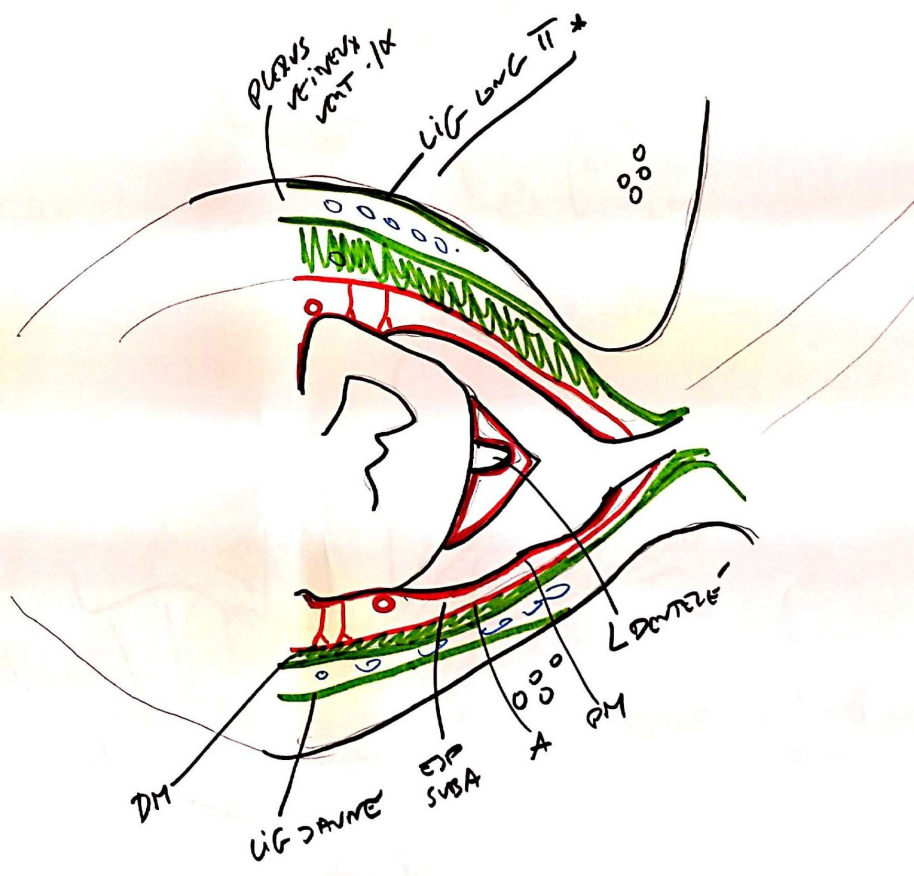
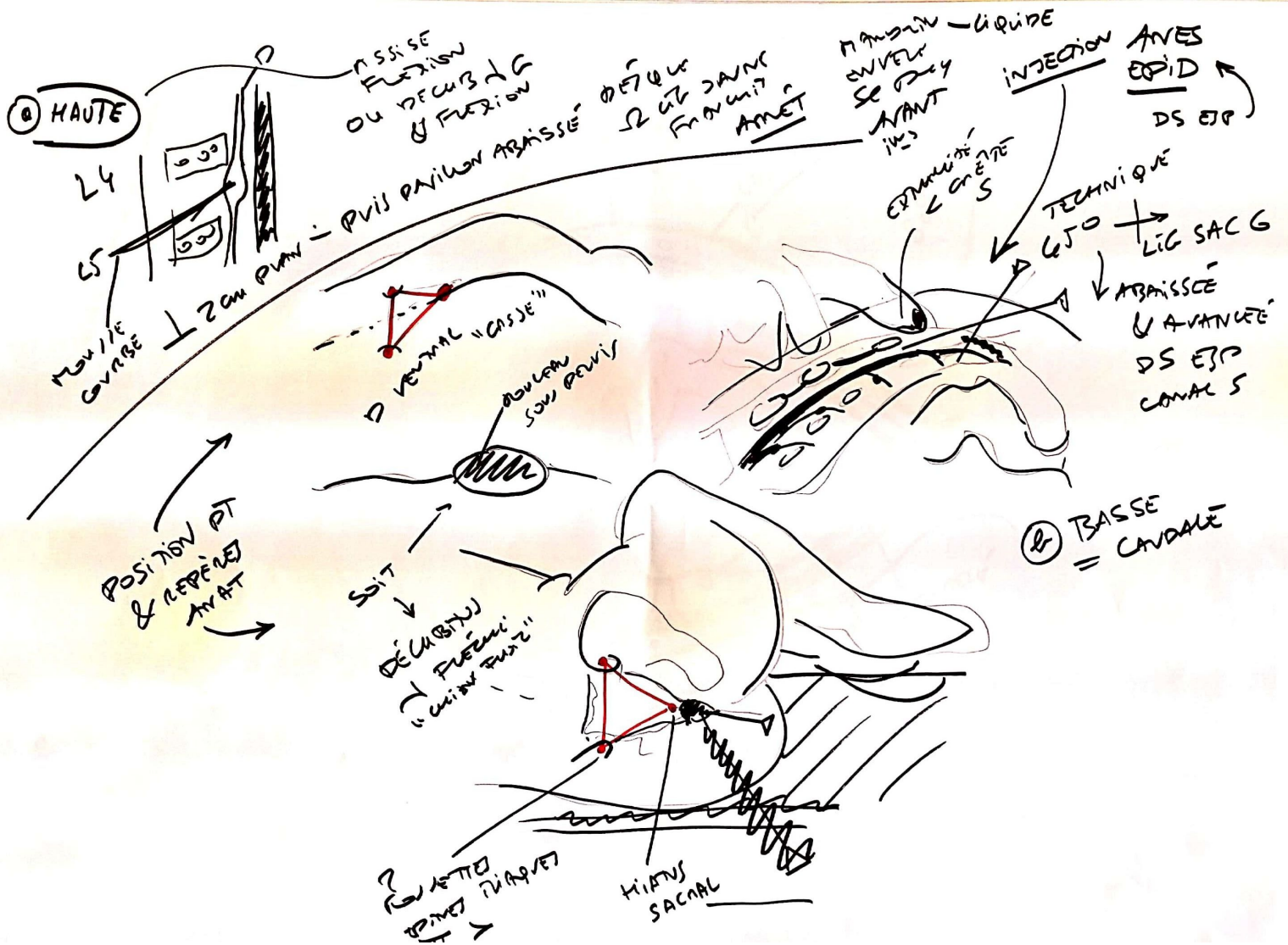
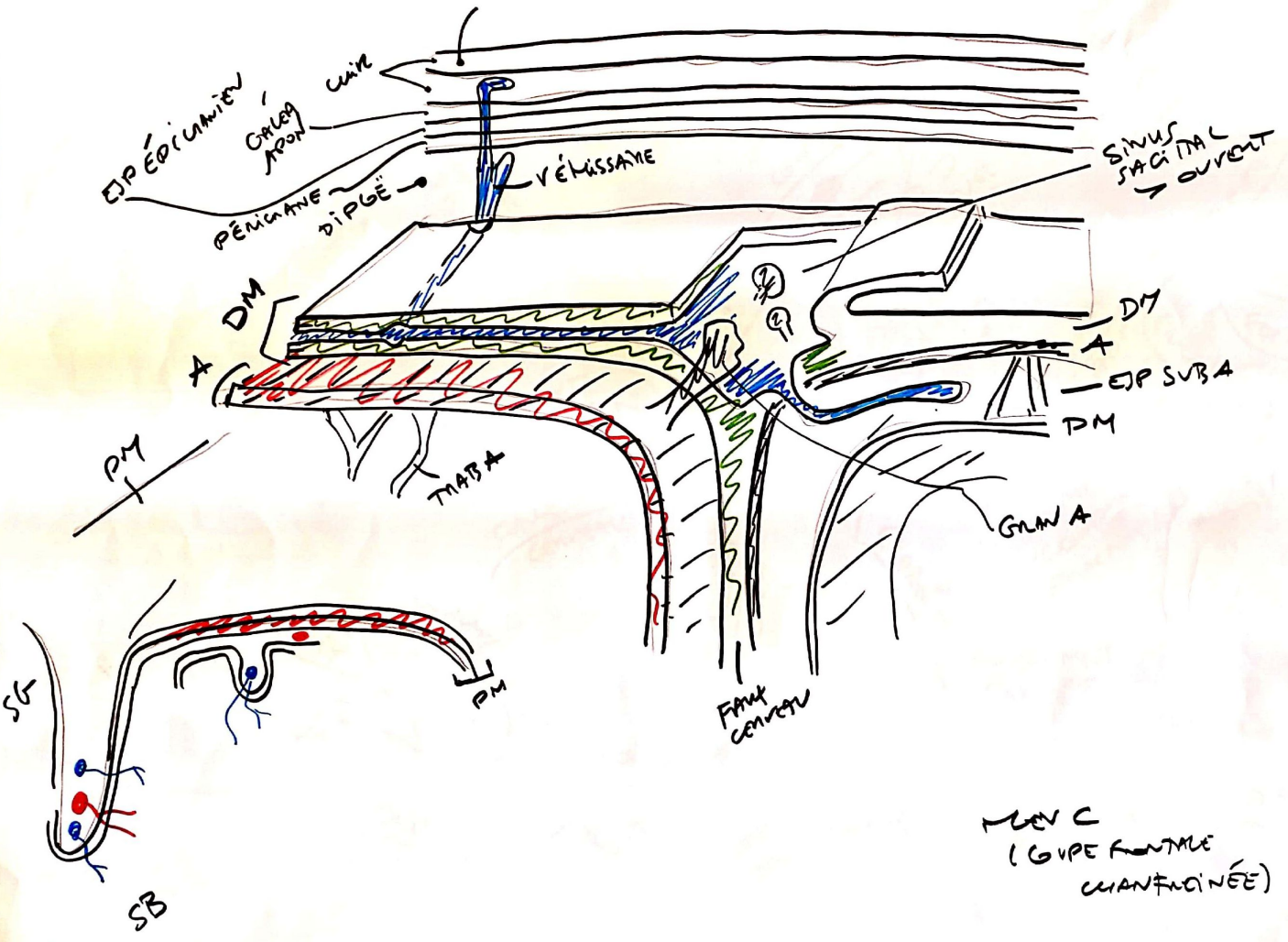
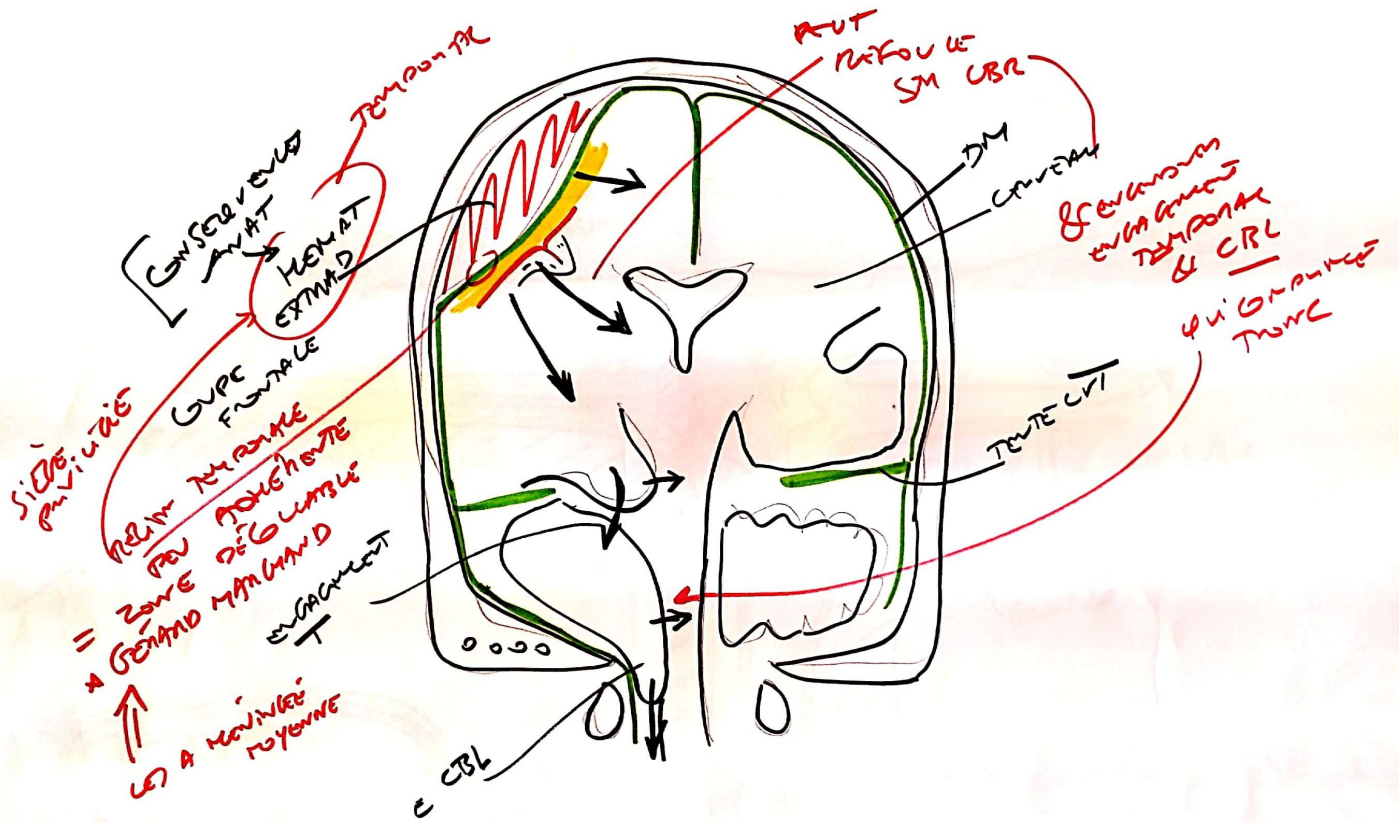


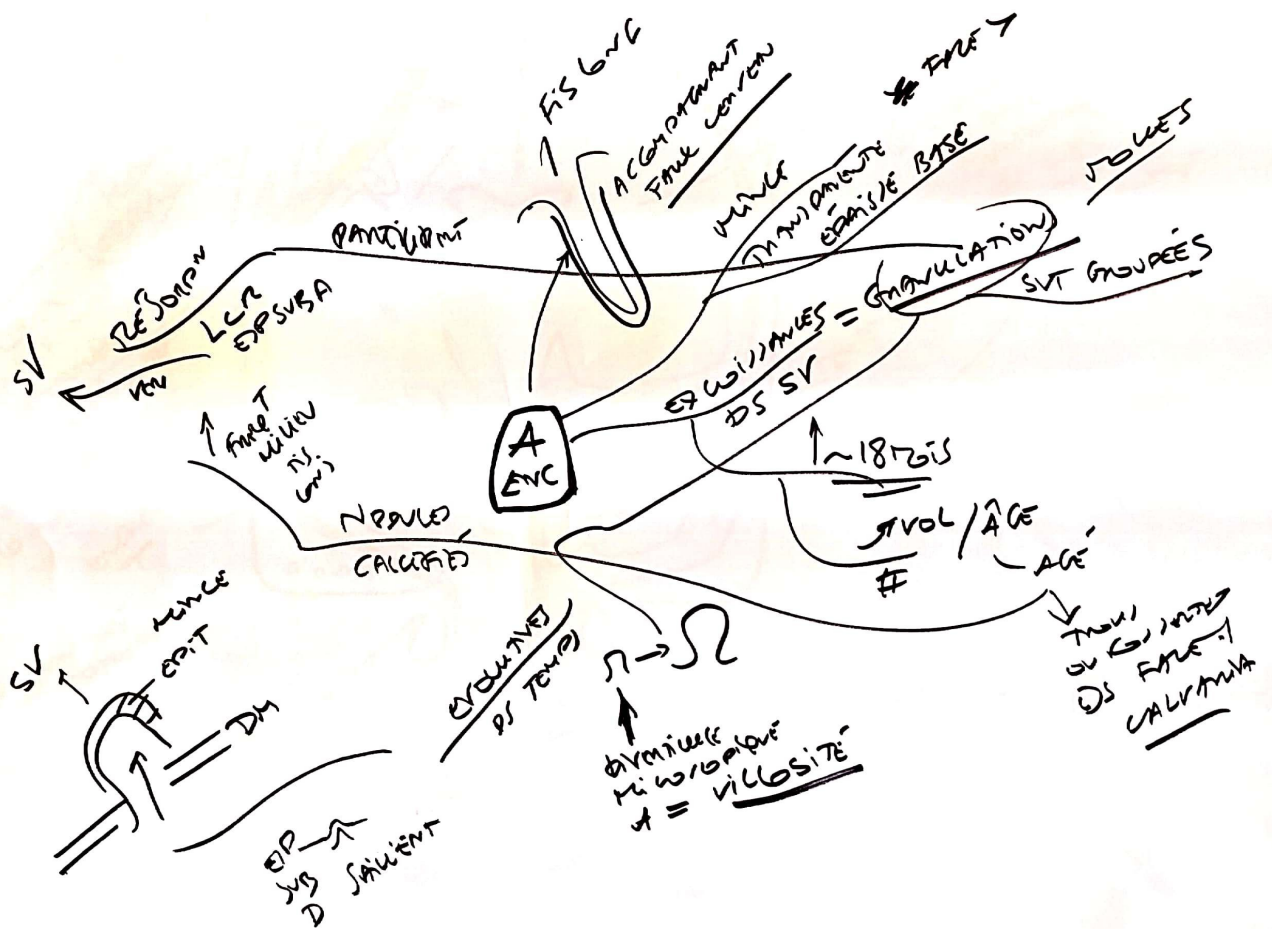
MON SAINNES
VUETT

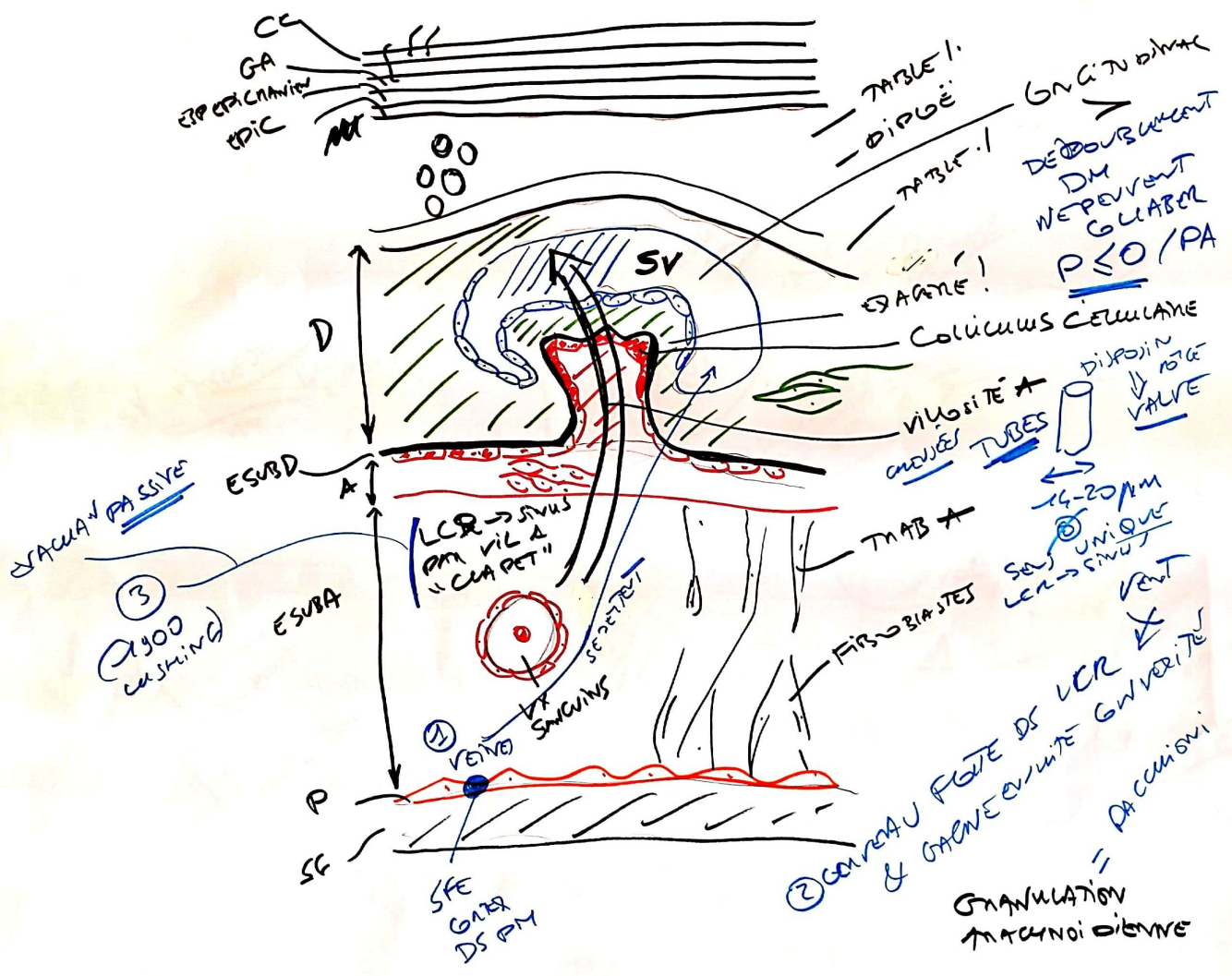












SECRET
&
TRAJET
LCP

④ EVALUÉ PAR SIMU VESWOLK

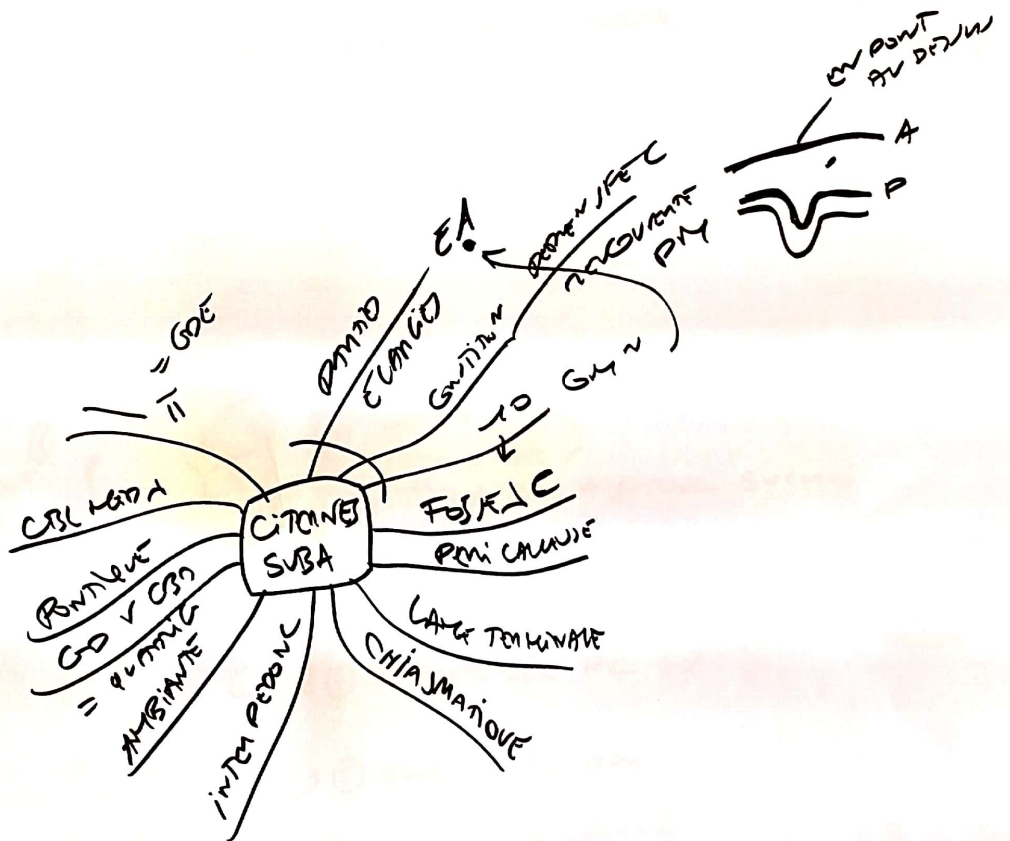
⑥
TRAVAIL
& SOUTIEN
ENC

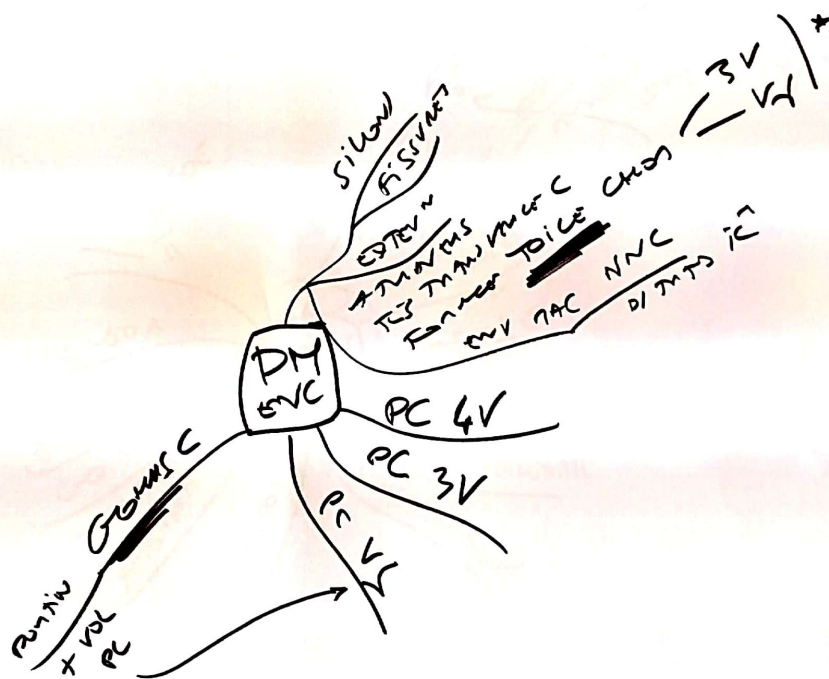
① SER PAR OUD UN DE DEUX V ↓
→ TOUTS MONDE
↓ 3V ou STADUTE SÉ

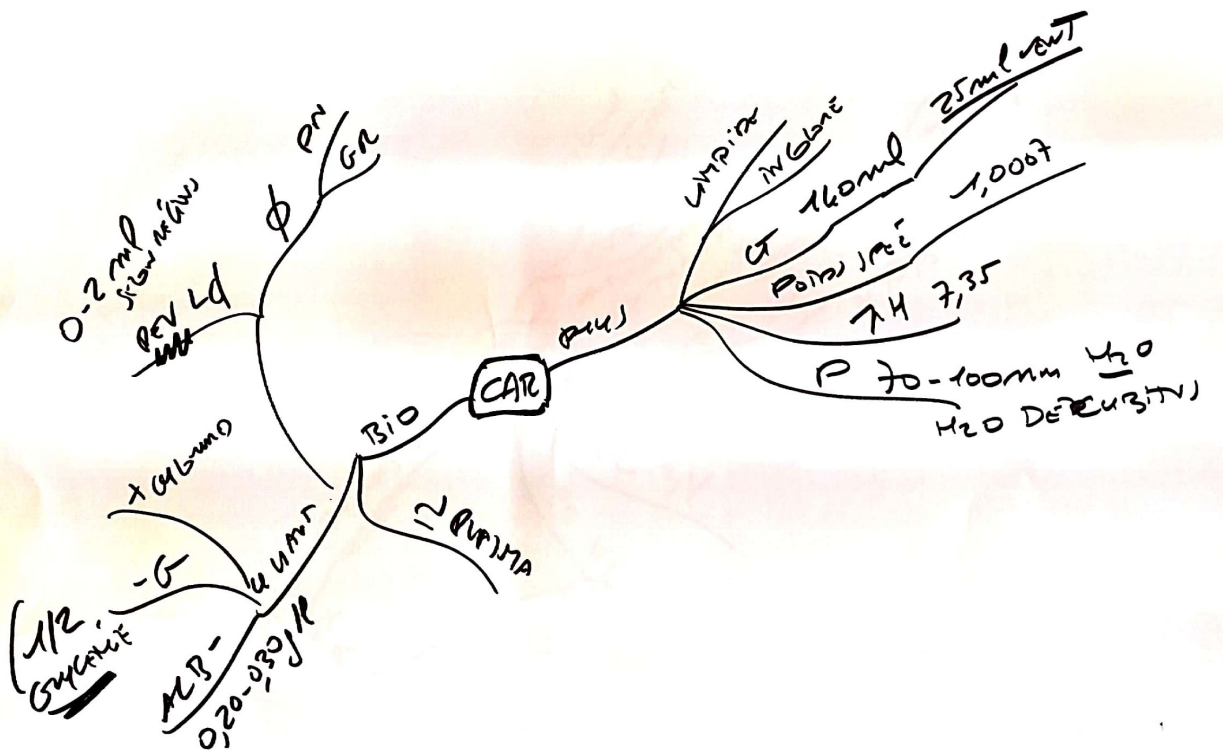
② SONT 3V PAR A QUAND SYLVIUS
③ ARRIVE SOMMET 4V
FENÊ EN ARR PAR MB A TELTONA
(MOUDE)

④ STADUTE SÉ PC 4V

⑤ EMAPPE 4V PAR
TOUTS MAGADIE
& USINTA
& FLOU 4 VENS MCE & ENC





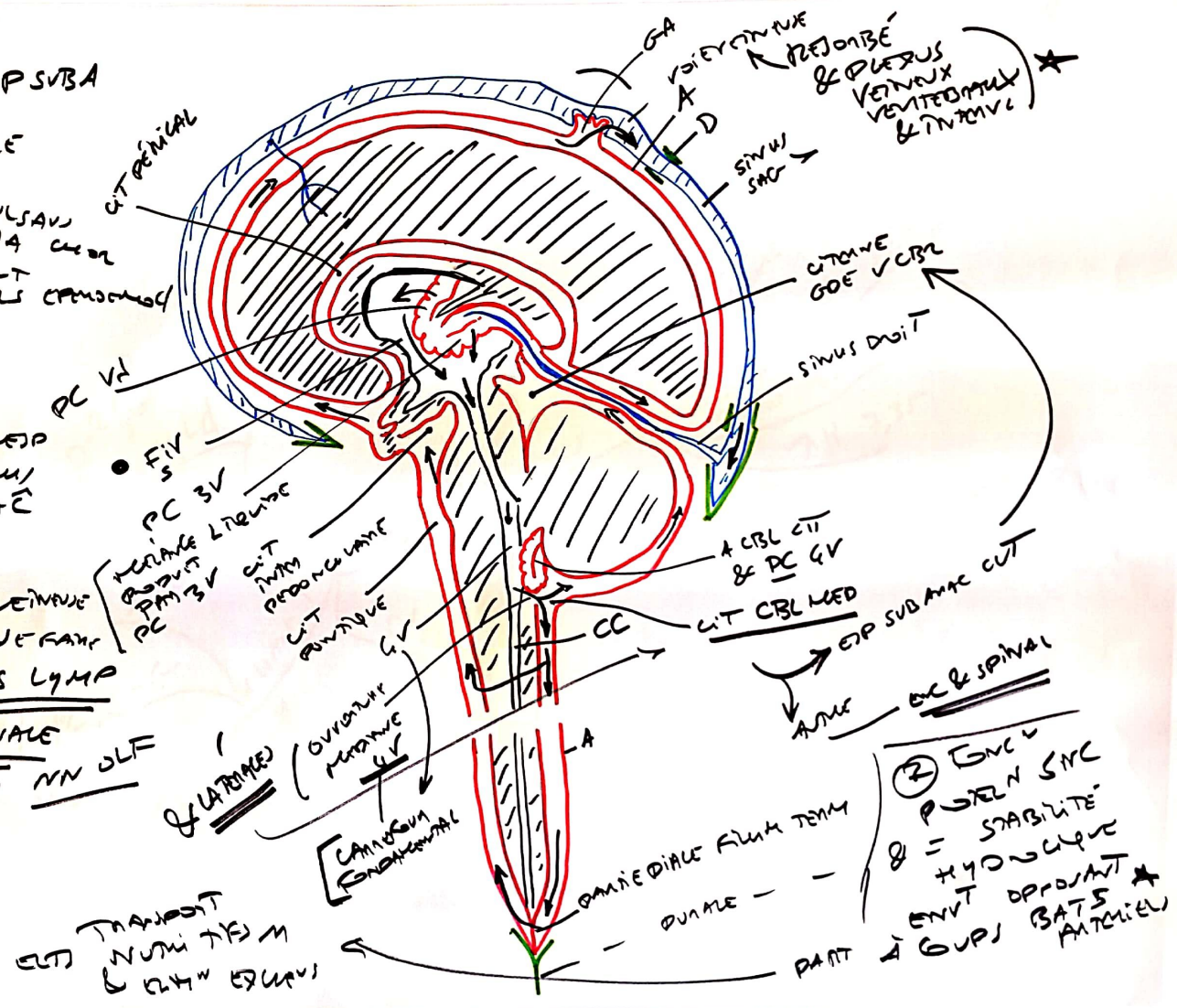


① CIRCULATION
VENT → EP SUBA

- MAT POSSIBLE
 → PULSATION
 → BATTIMENT
 → VEINUSE
 → AA CHER
 → CILS CIRCULATOIRES

- LENTE
 → ARRIVEE
 → PA INTAME

- RESORPTION
 → VEINUSE
 → MV SYS LYMP
 → LUNG NASALE
 → NN OLF



② CIRCULATION
 → STABILITE'
 → HYDROLYSE
 → ENVT OPPOSIT
 → GUPS BATS
 → ANTERIEUR

