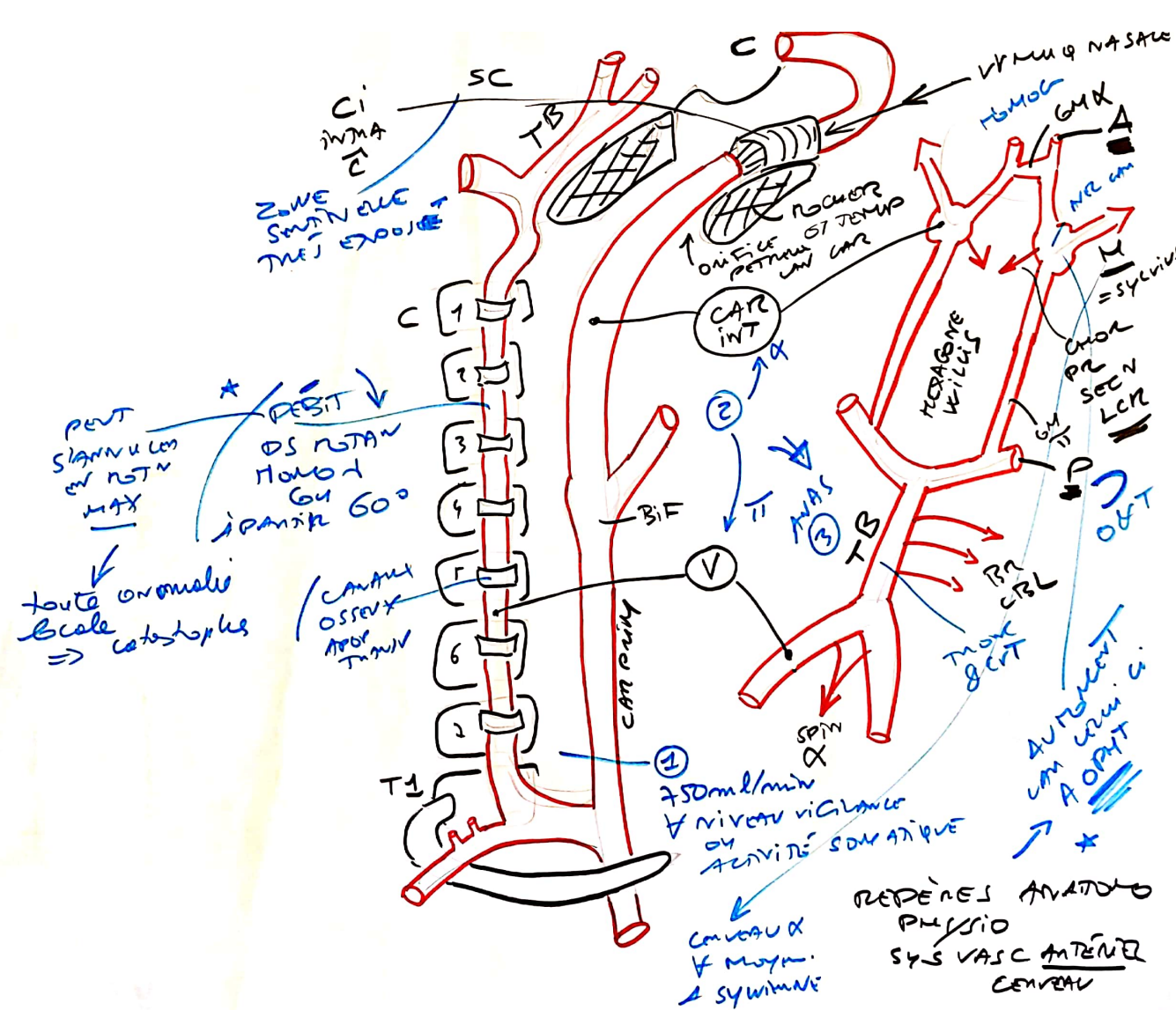


CIRCULATION  
ANTERIEURE  
CEREBRALE  
ADULTE

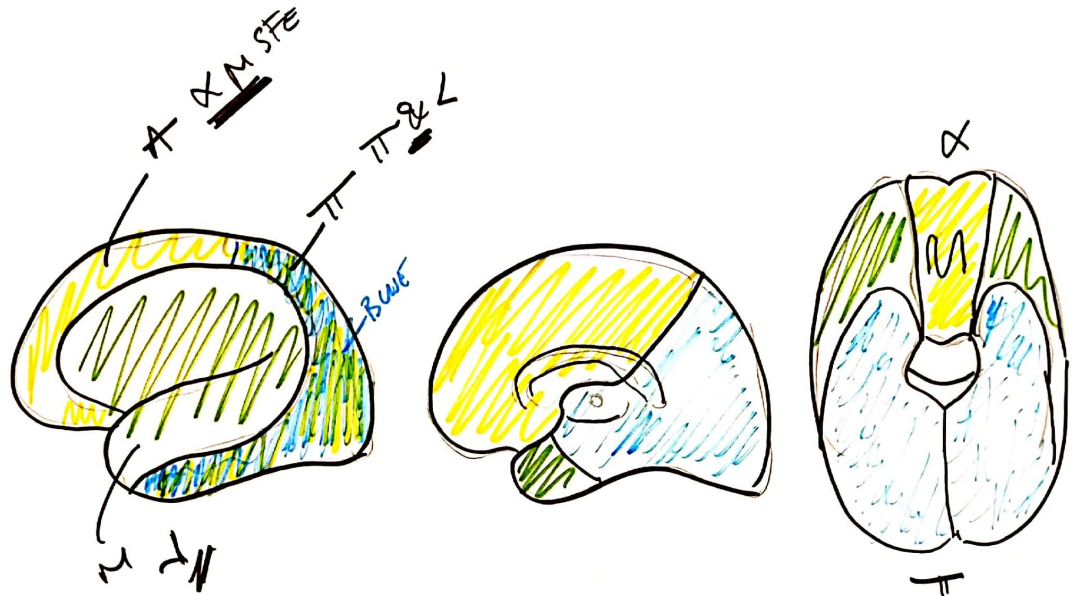
ARC  
 ↓  
 OCCIPITALE  
 ↓  
 ACTIVATION  
 ↓  
 "PROMPTISSIMO"  
 RETROGRADU  
 DEPRIMIBILITE  
 REASCEN 3m  
 & GULO OZ  
 DNE AUJI  
 PASIVOS SYN

FOETUS

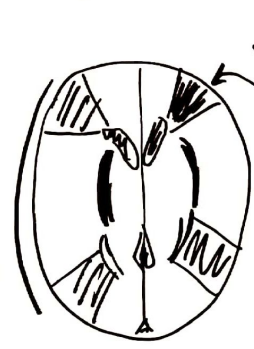
Sq → FO → AG → VA TO CAR & VMT  
 ⊕ CROUPE FN GUMINOP = AA ORIGINE



Cerebral AA  
CORTICAL  
DISTRIBUTION



WATER-SHED ZONES



BORDER ZONES OCCUR BETWEEN X & M

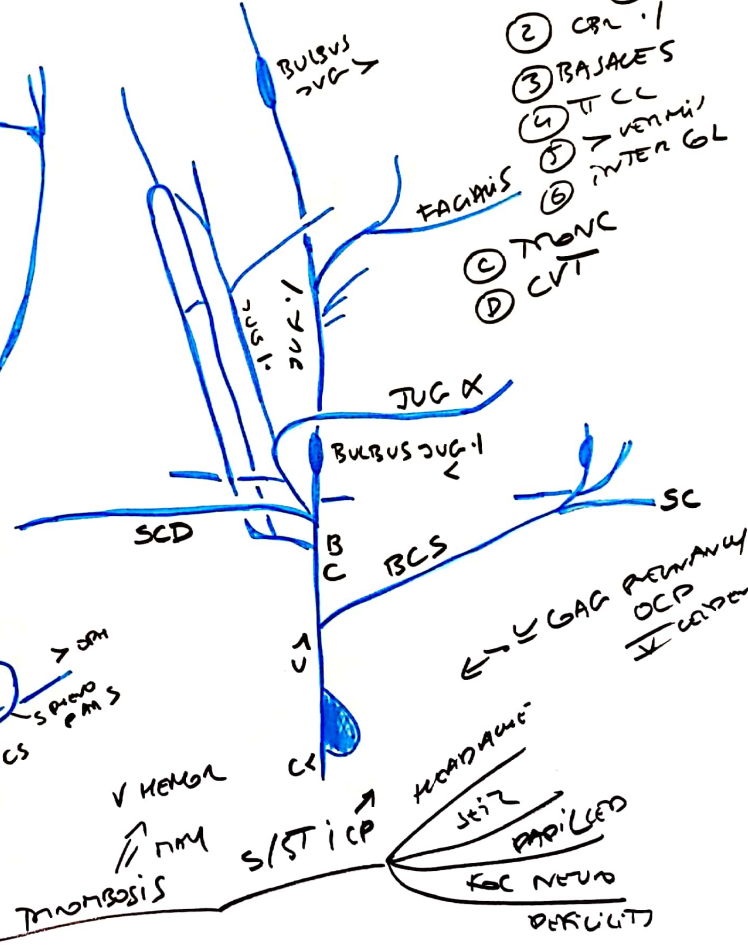
INTERNAL BORDER ZONES OCCUR BETWEEN VASC. TERMINALS OF M

INFARCT → PDX UPPER & LOWER EXTREMITY  
 IF π / M → HIGH DIM OXYGEN VISUAL CBR CONTRAST STROKE



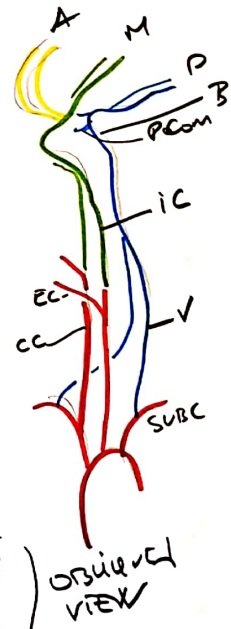
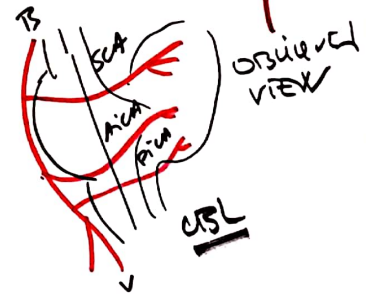
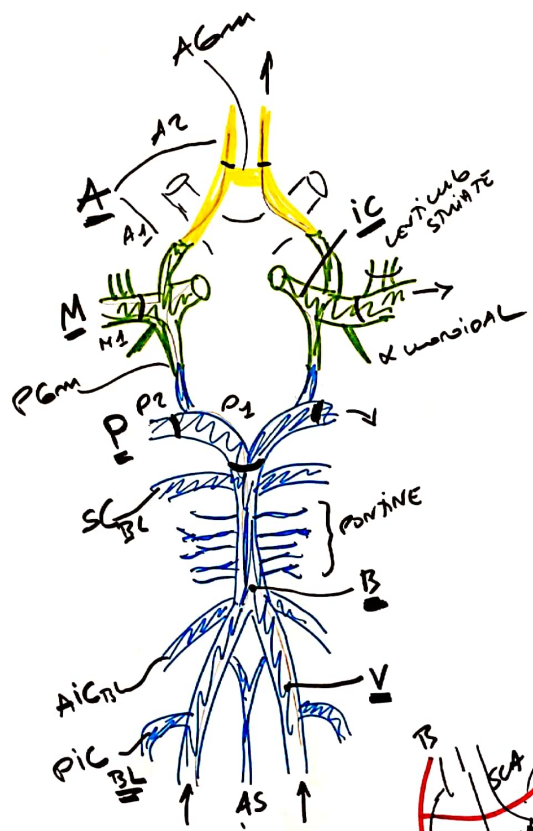
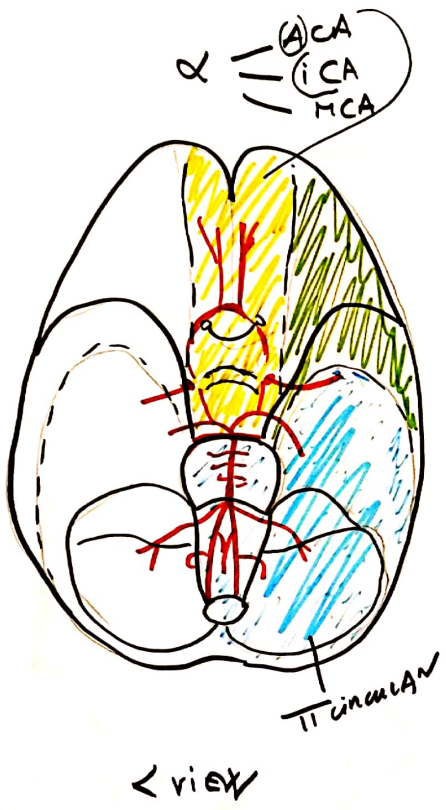
- (A) - CEREBRUM DS SILONS  
 (1) CBR >  
 (2) M i  
 (3) <
- CBX  
 SFE PIEM  
 DS EP  
 SUB MAC

- (B) -  
 NX BASALE  
 & SM PENT  
 → GRANDE  
 (1) CBR i  
 (2) BASALES  
 (3) TT CC  
 (4) VERMIL  
 (5) INTER GL  
 (C) TRONC  
 (D) CVT



PERICOTT  
 NEW LAY  
 DM  
 ONAW  
 CBR  
 VV  
 NERVE  
 CSF FROM  
 MAC GRAN  
 S = SINUS  
 MASTO INTO





CIRCLE  
 ILLUS  
 SUS ANAS  
 RET W  
 X & T  
 TBB SUP  
 TOTB