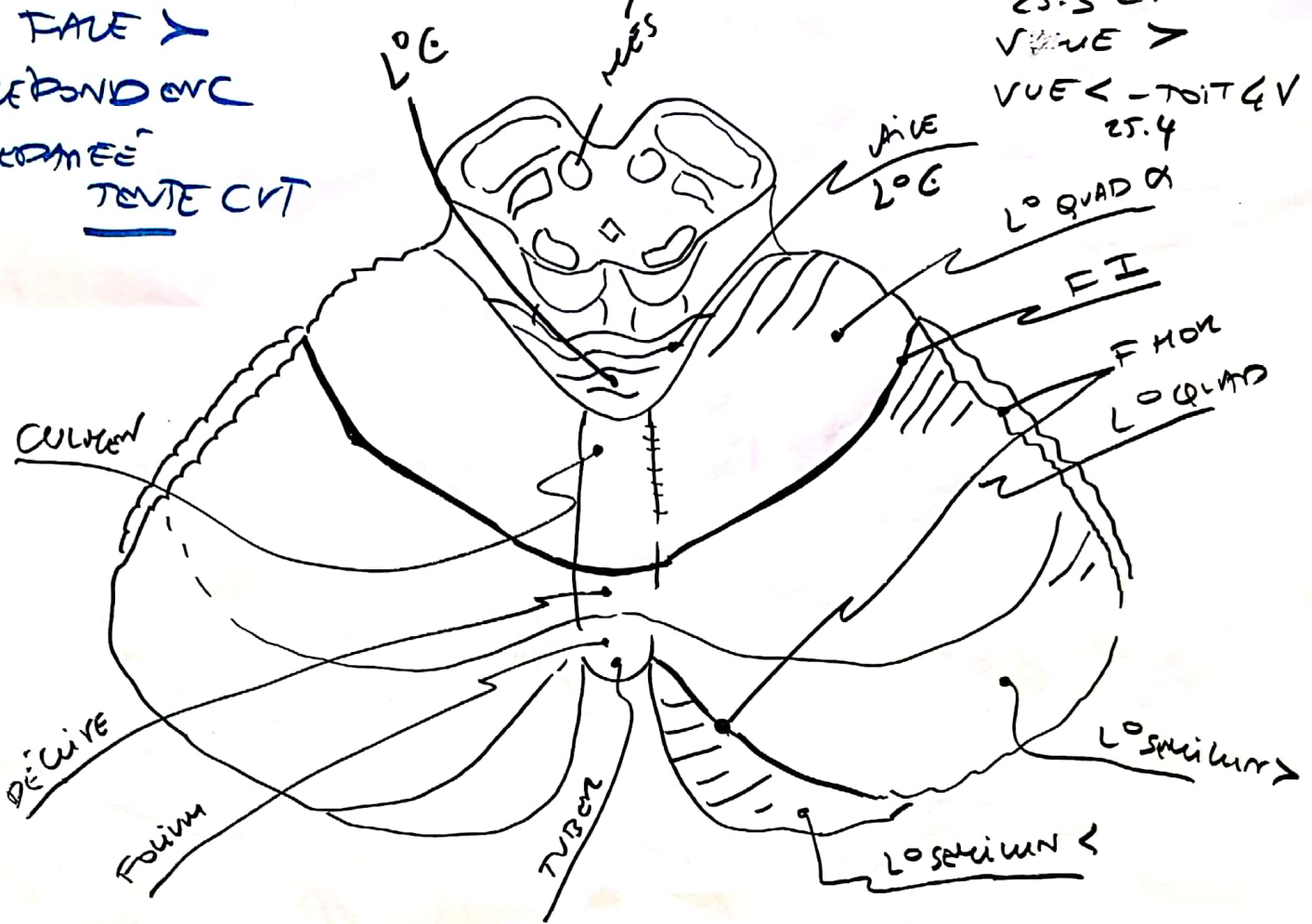
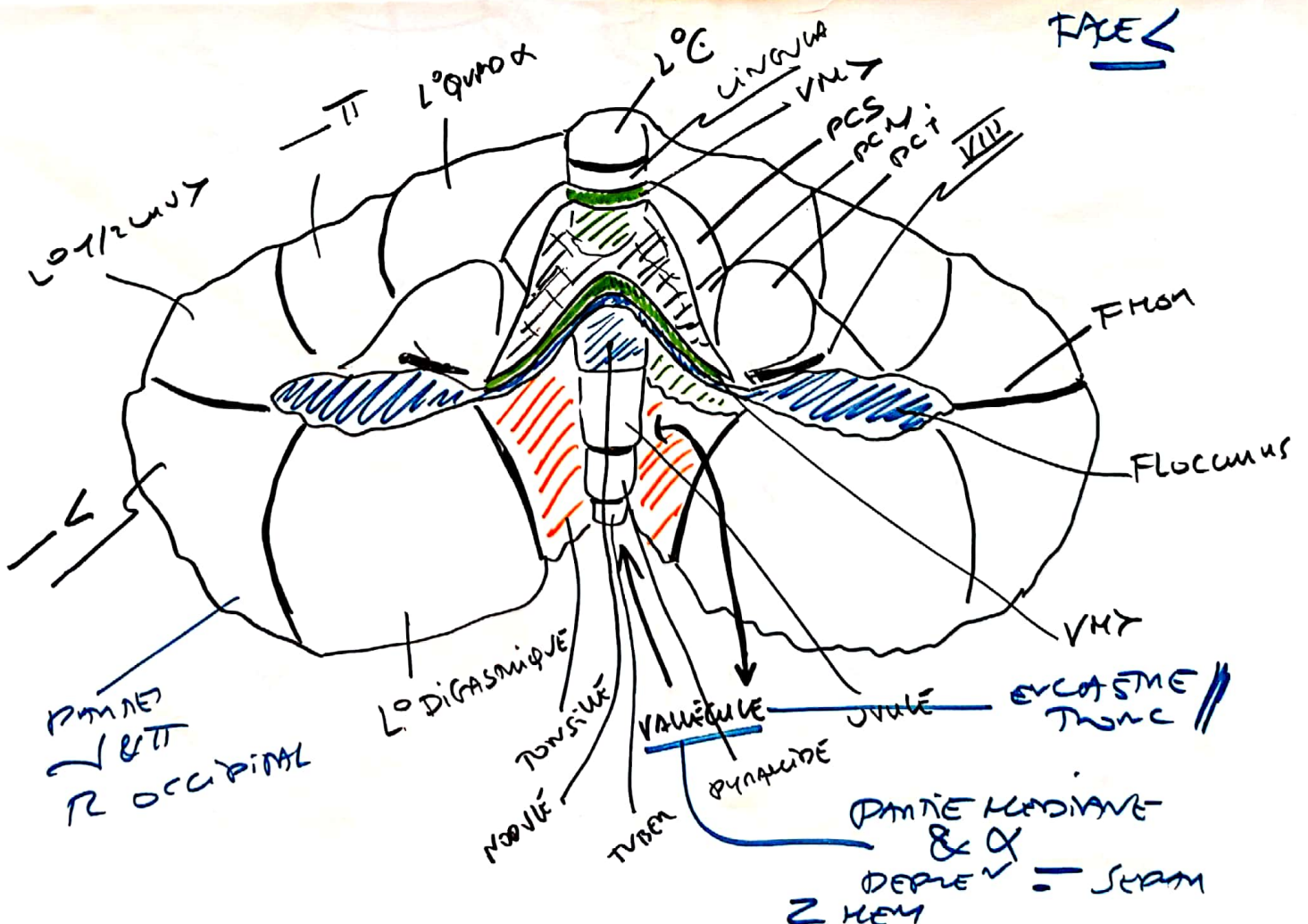


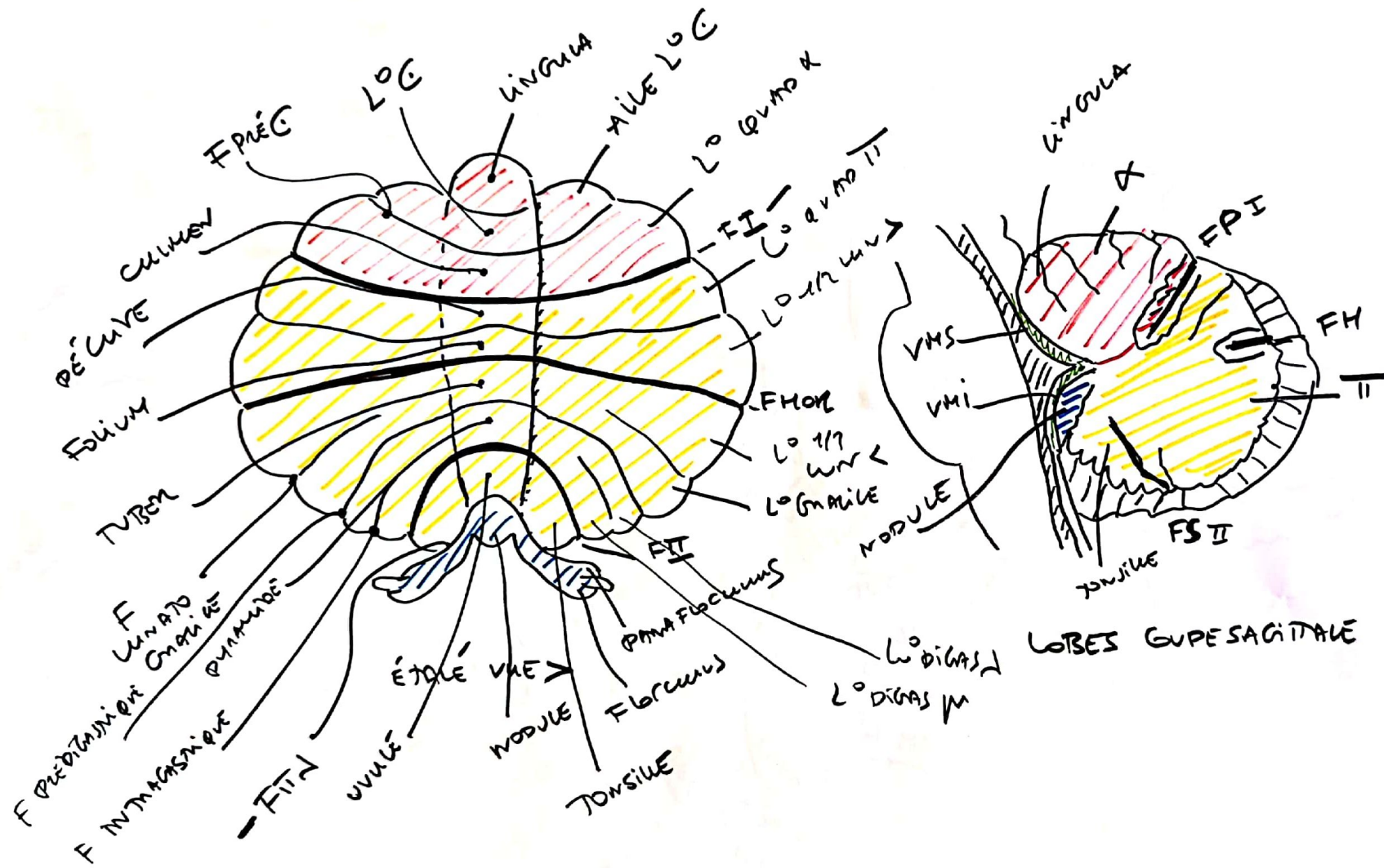
FACE >
 - RÉPOND OVC
 - SERRÉE
TENTE CVT

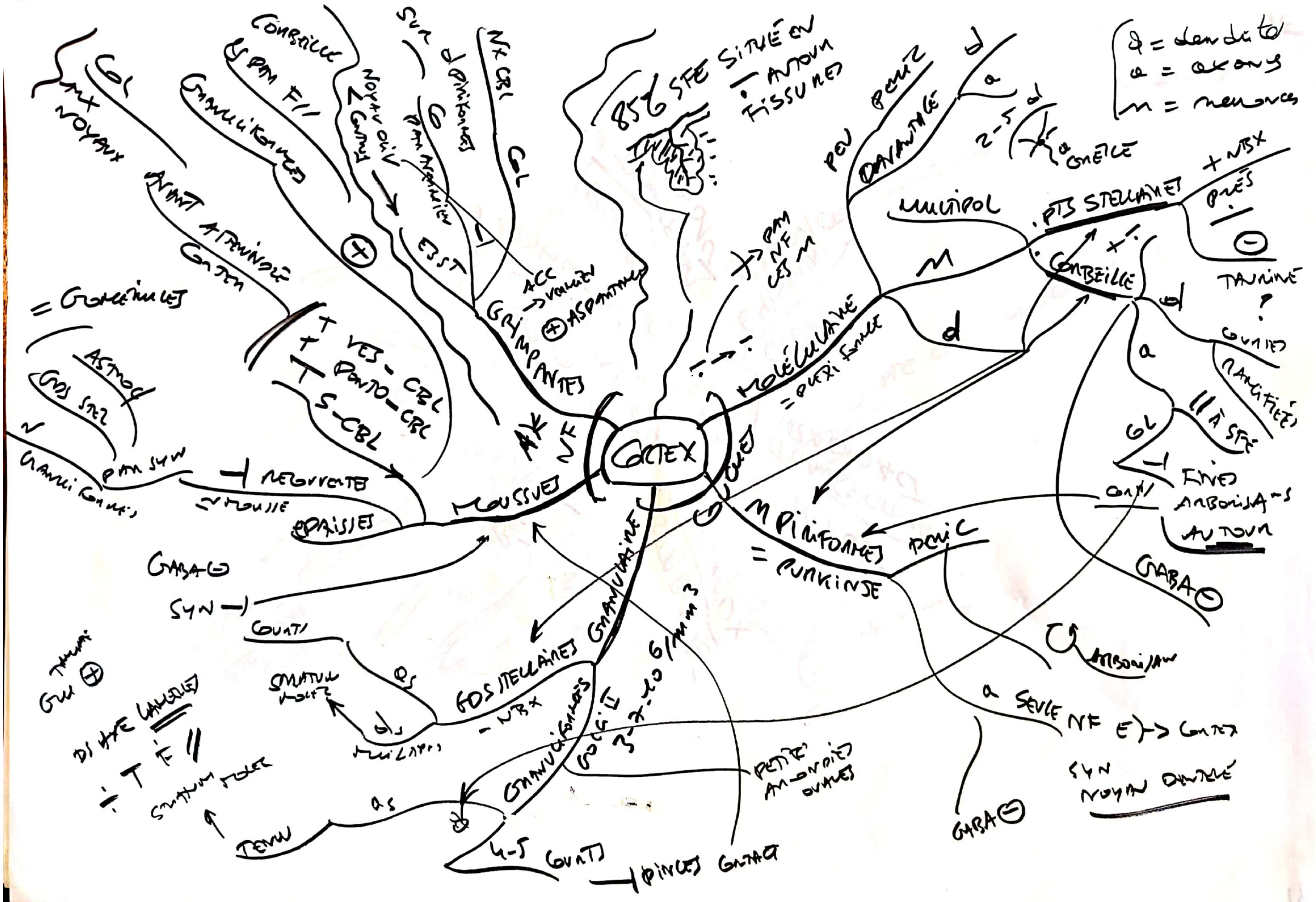
25.3 CVT
 VUE >
 VUE < - TOIT & V
 25.4

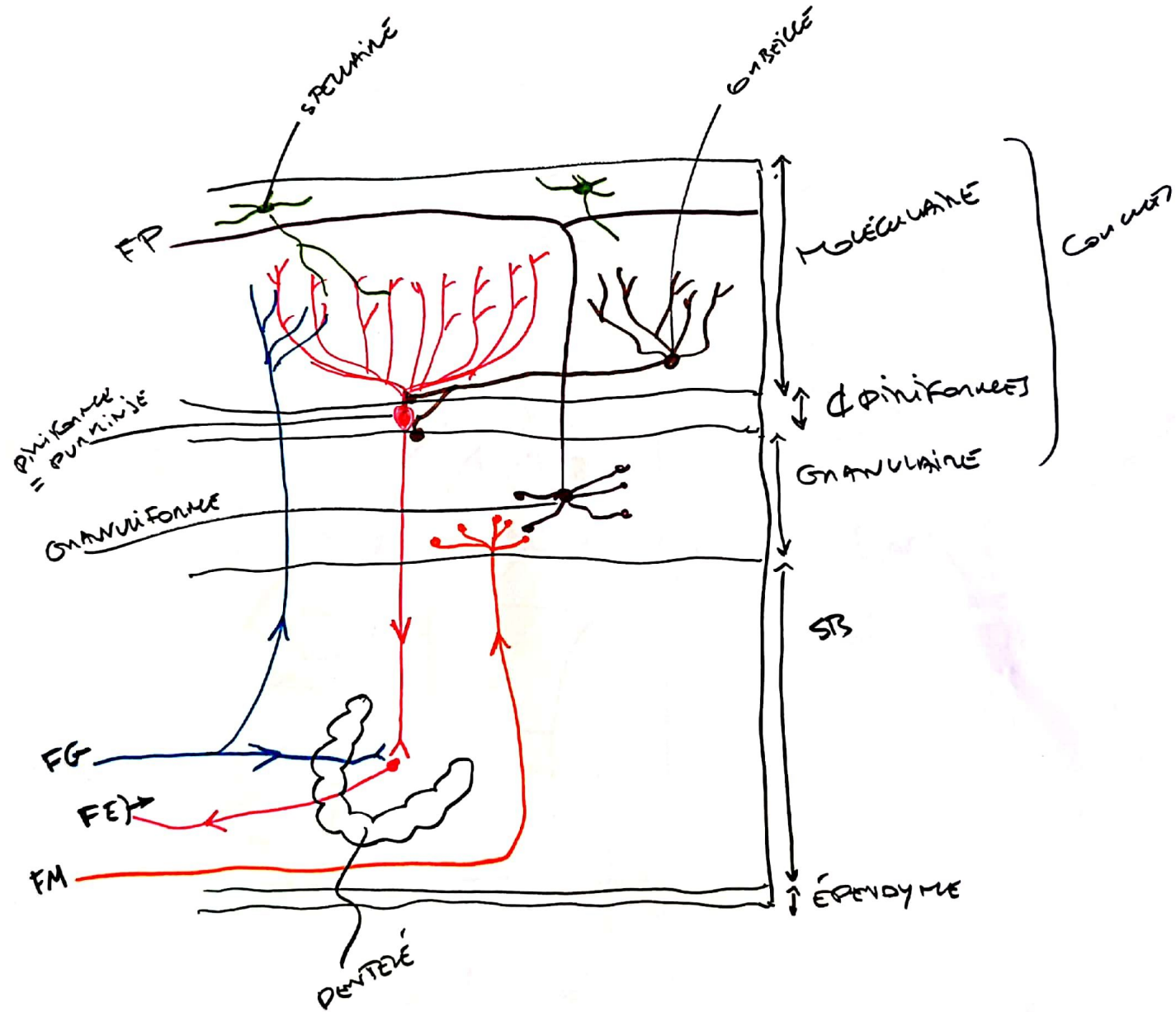


FACE <

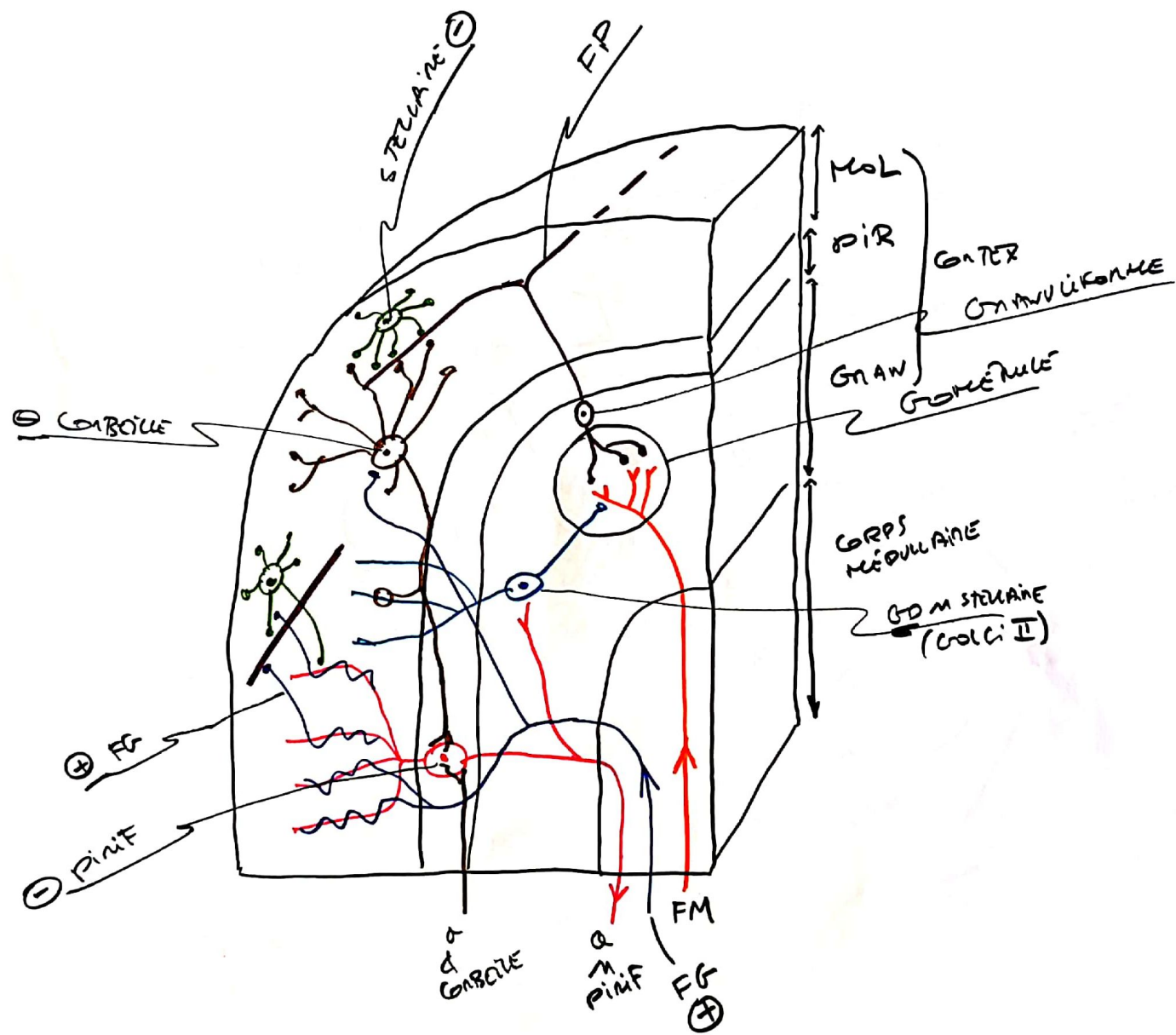




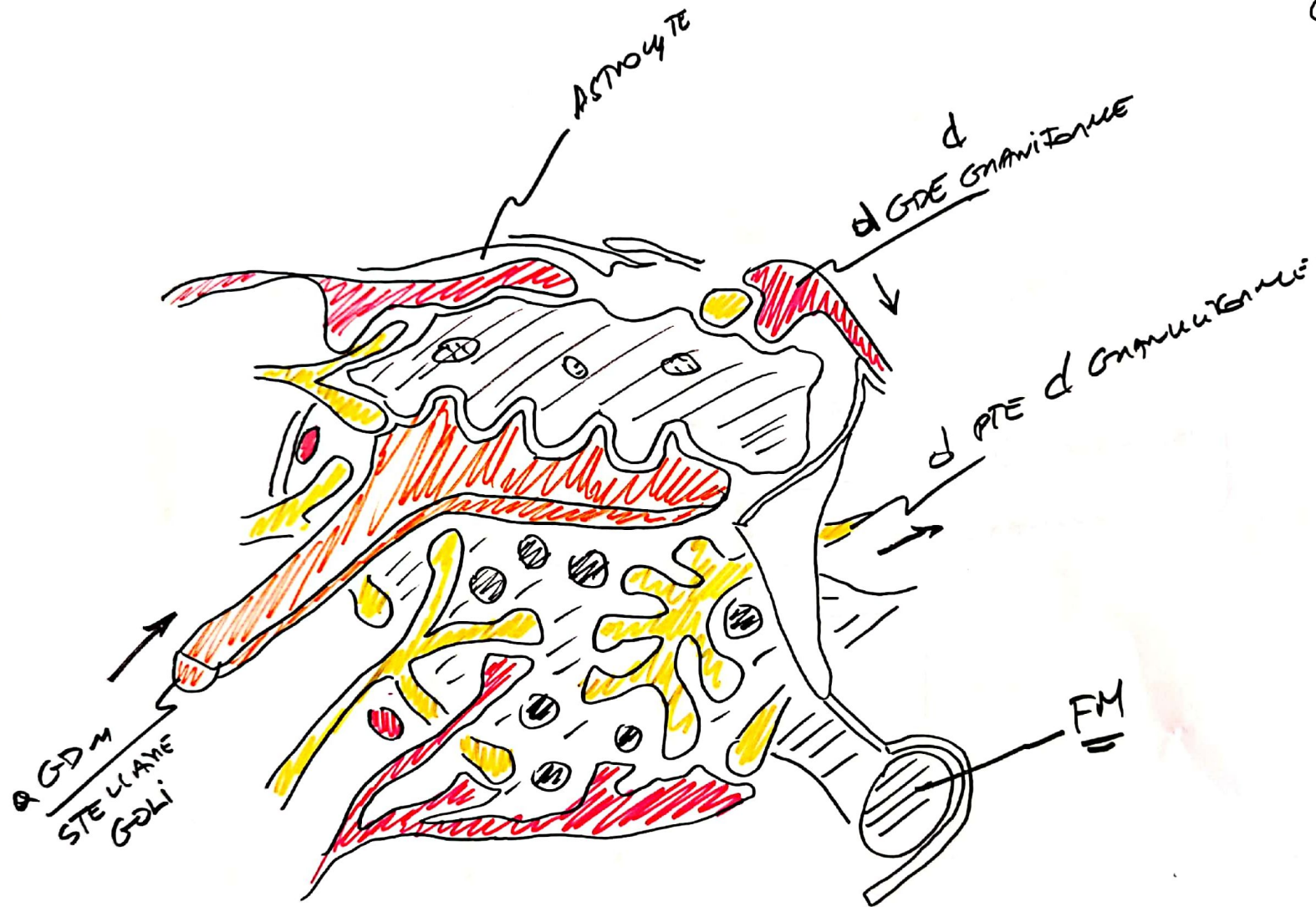


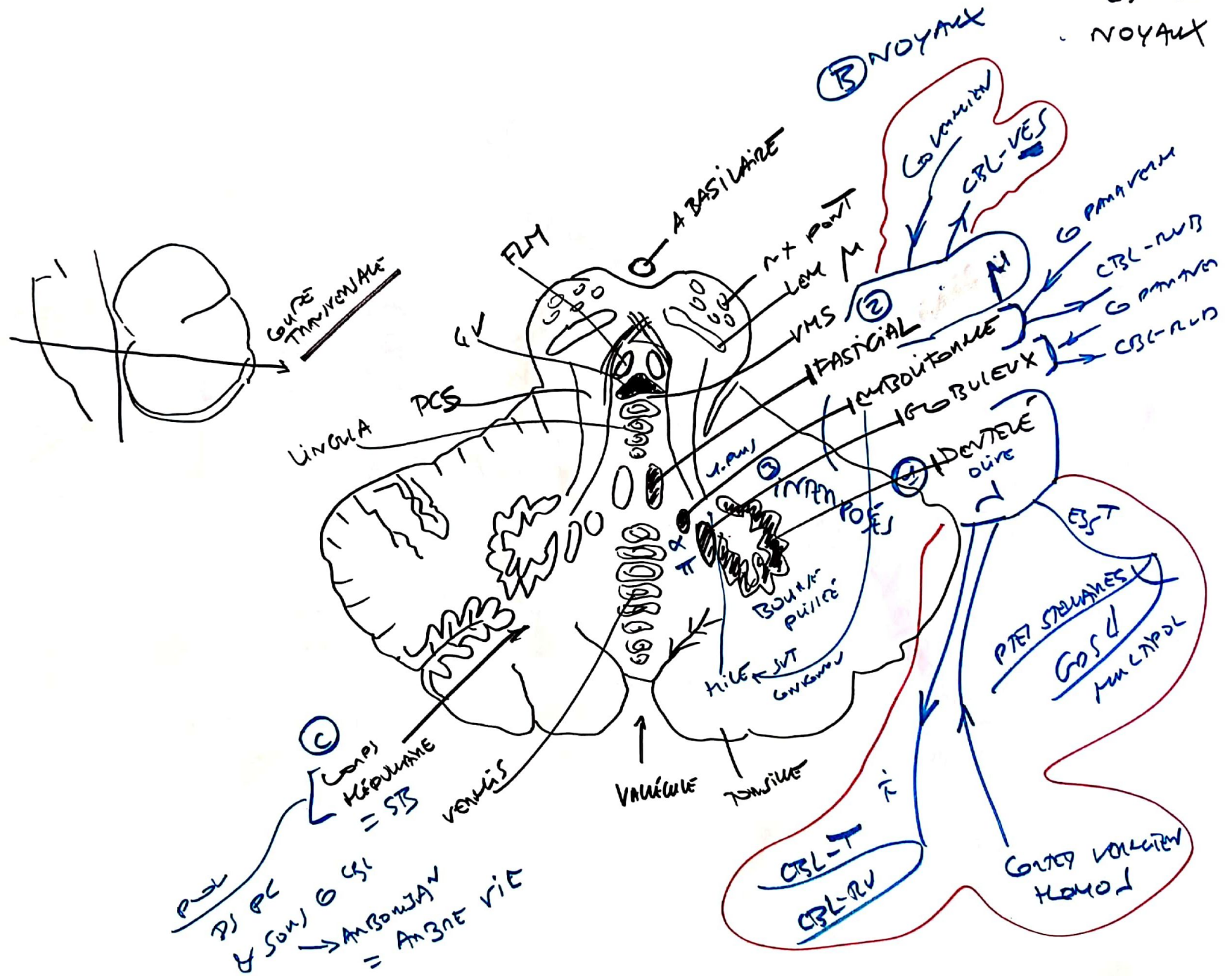


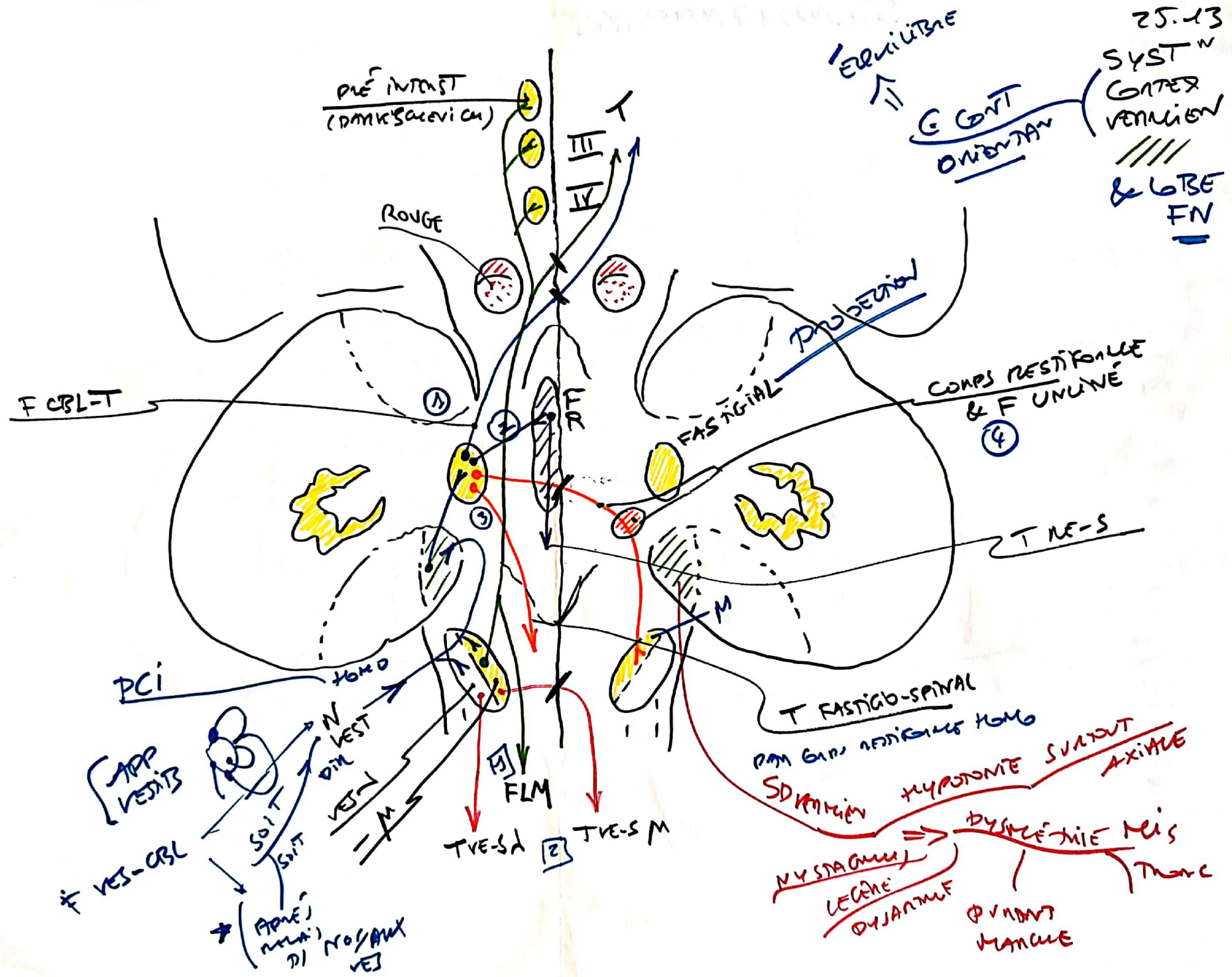
25.8
STR



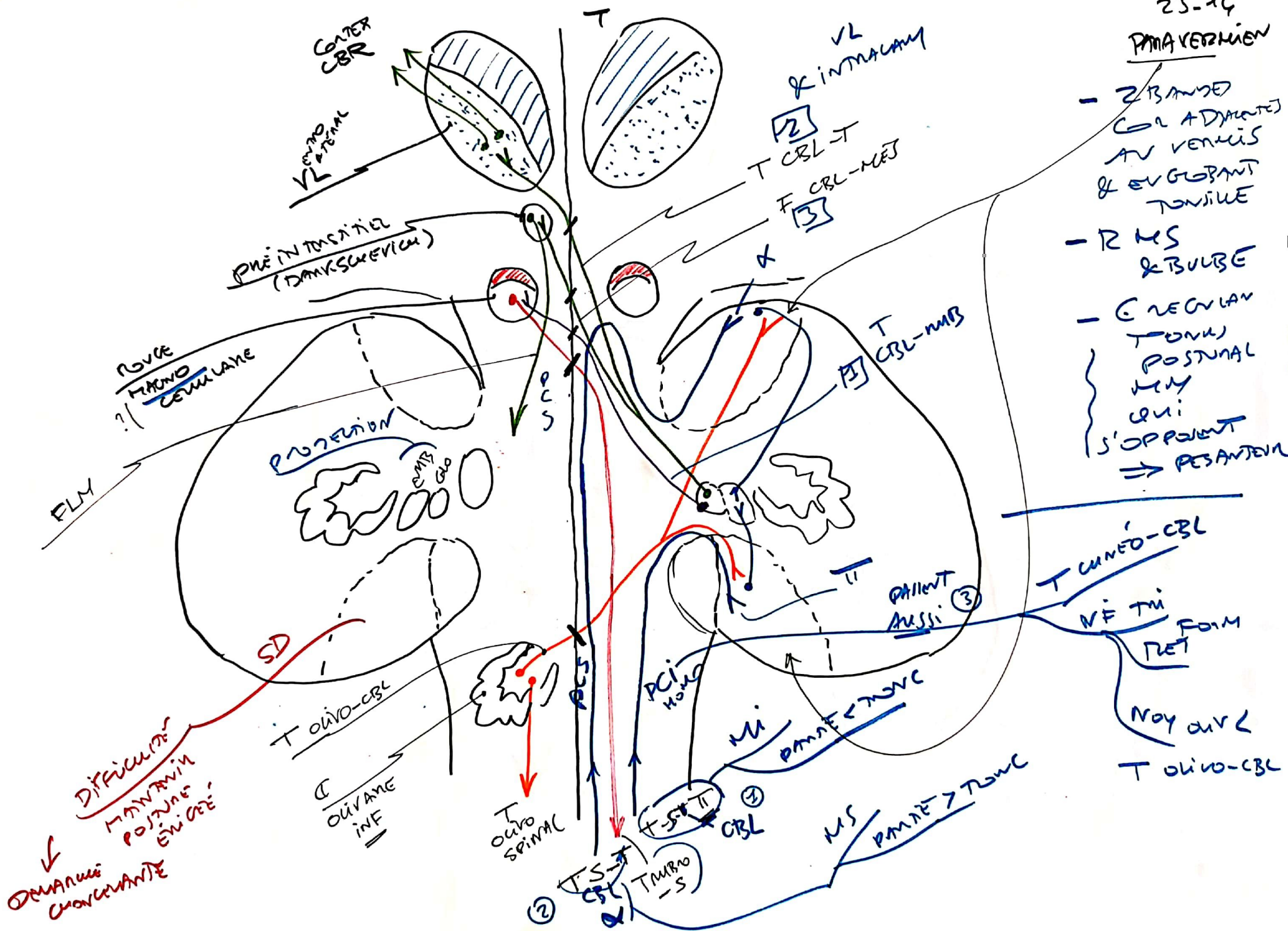
25.9
GOMÉRIE







PMA VERMION

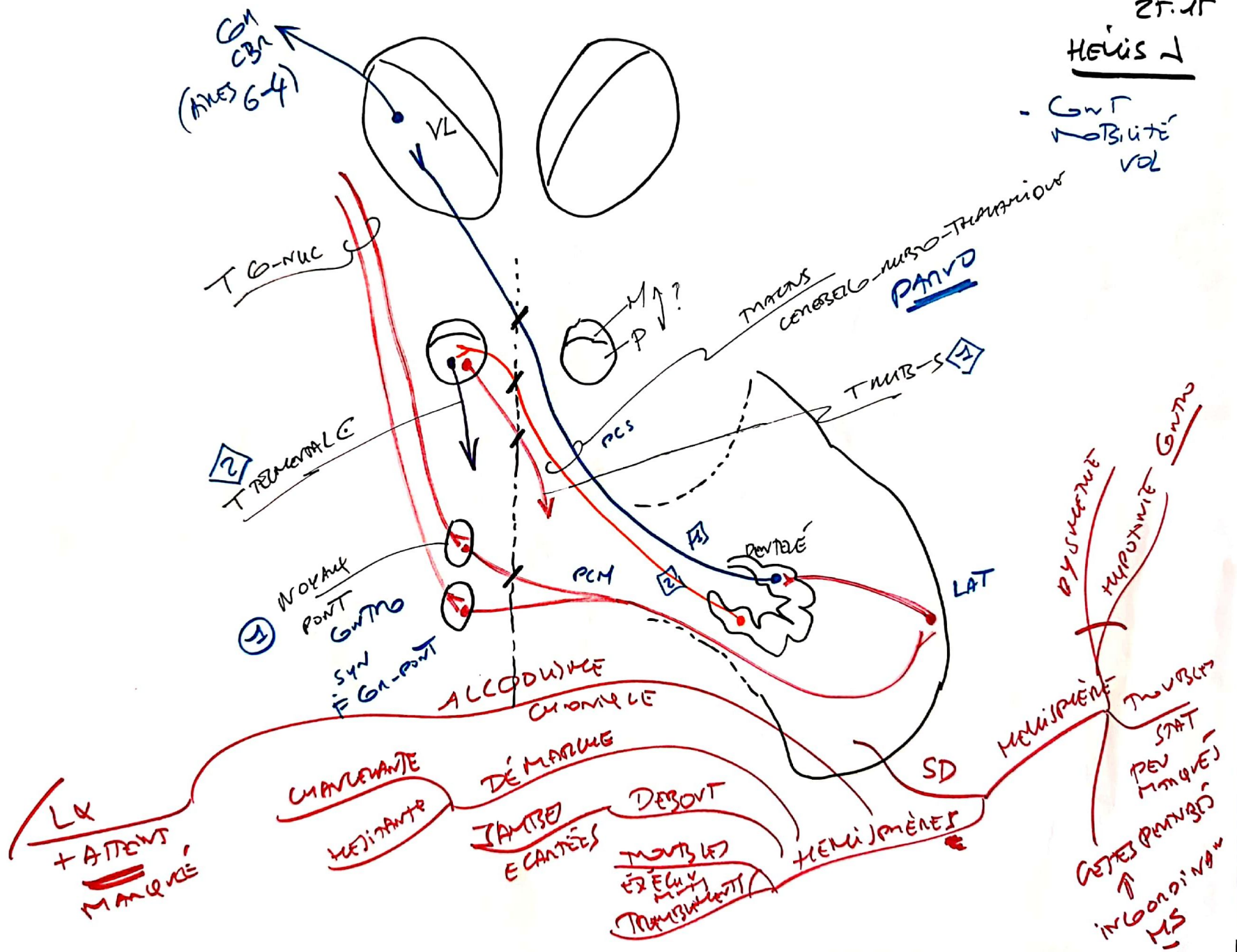


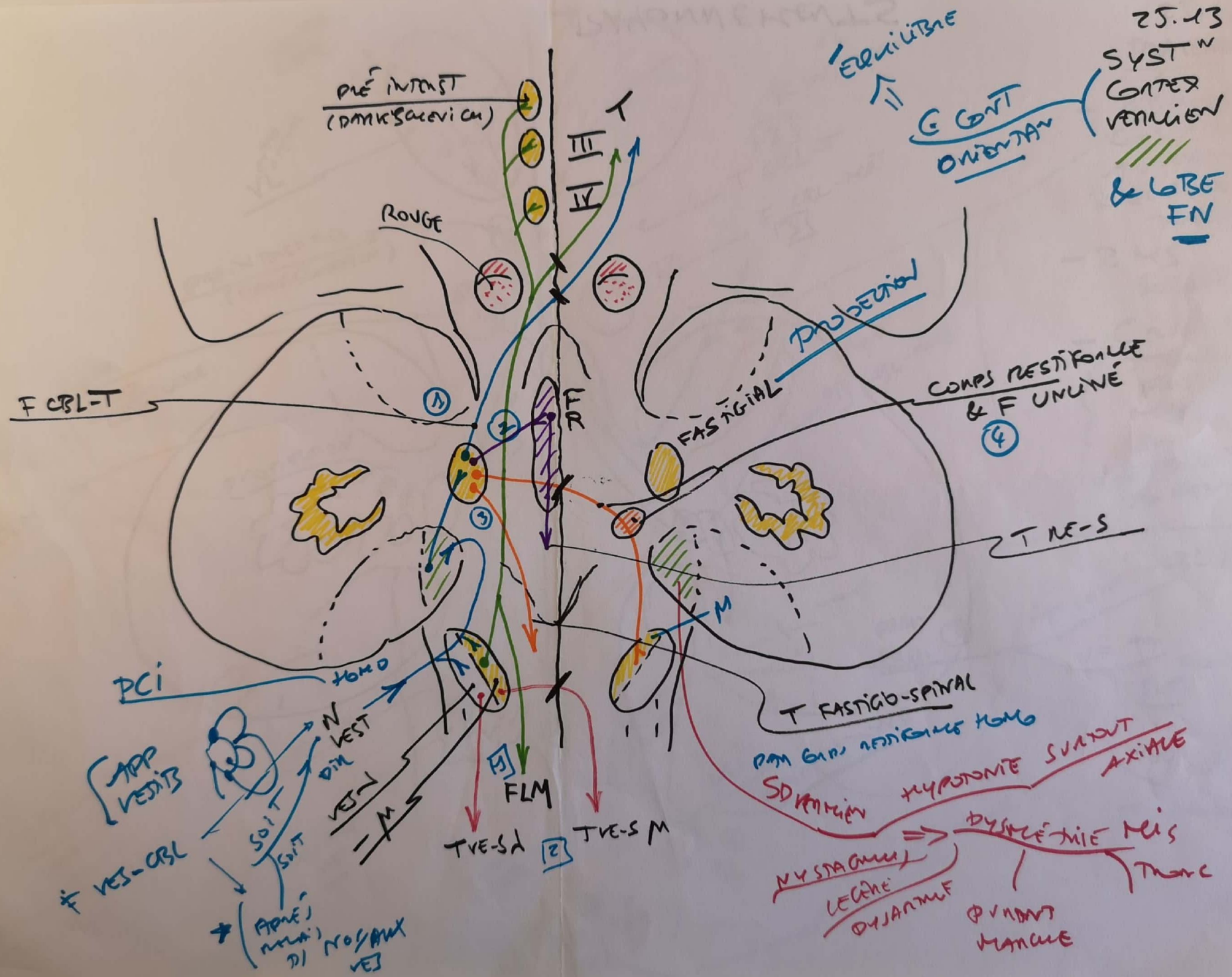
- 2 BRANCHED COL ADHESIVE AV VERMIS & EVGLOPANT TONSILLE
- RMS & BULBE
- C NUCLEAN TONNA POSTAL MMY QUI S'OPPOSENT => PES ANTEVA

DIPLOME MAURIN POSTUME EN CEE
 ↓
 DEMARQUE MARQUANTE

HEMIS

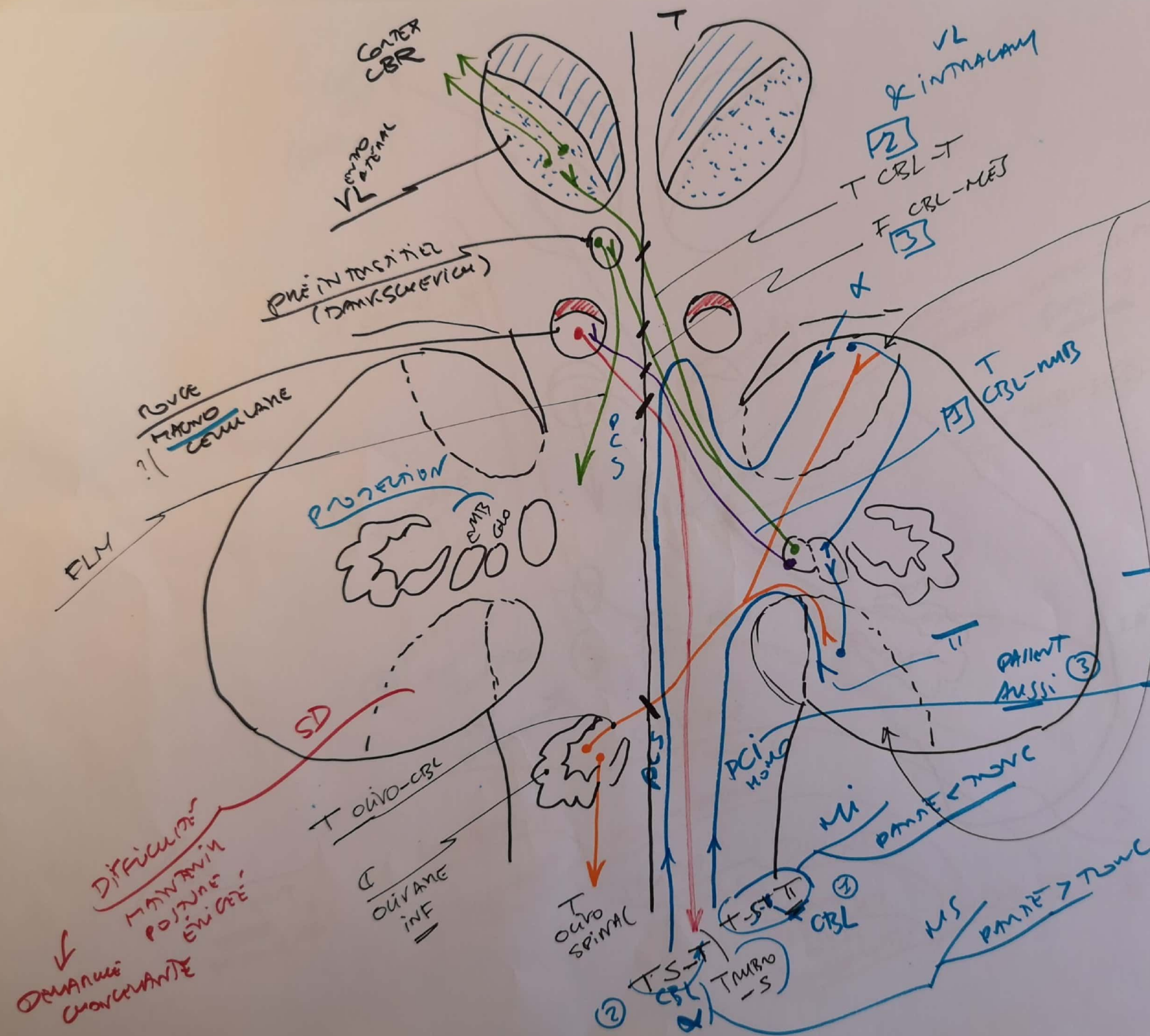
- GWT
mobilité
vol





PANA VERMION

- 2 BANDES COL ADHESIF AV VERMIS & EV GLOBANT TONSILLE
- RMS & BULBE
- C NECVIAN TONNA POSTNAL MMY Cui S'OPPOSENT => PES ANTEVA



HEMIS

- GWT
MOTILITÉ
VOL

