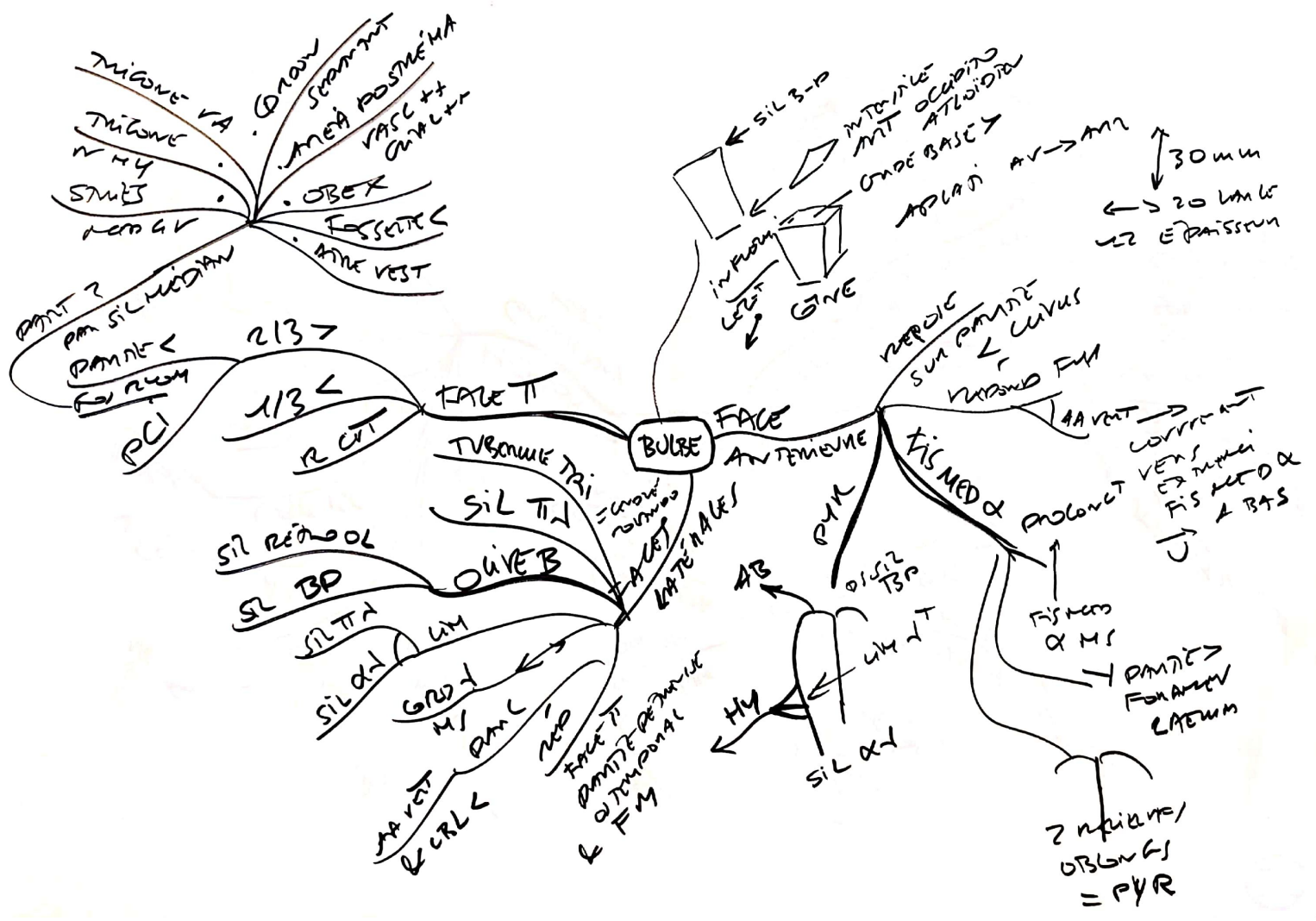
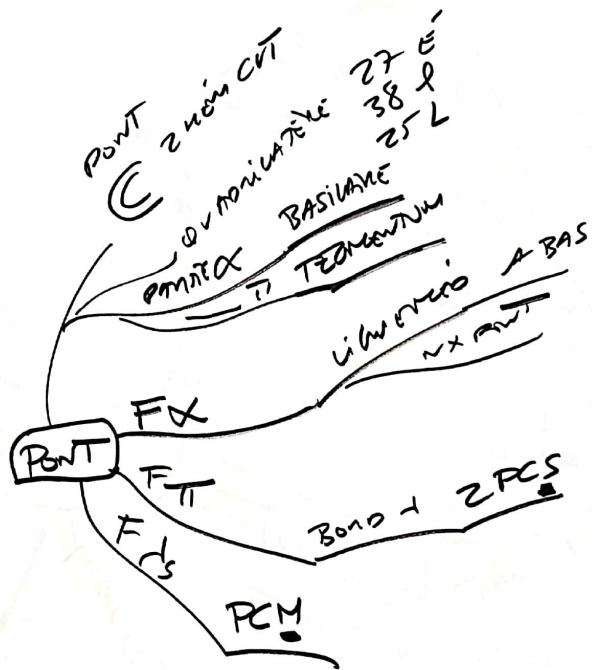


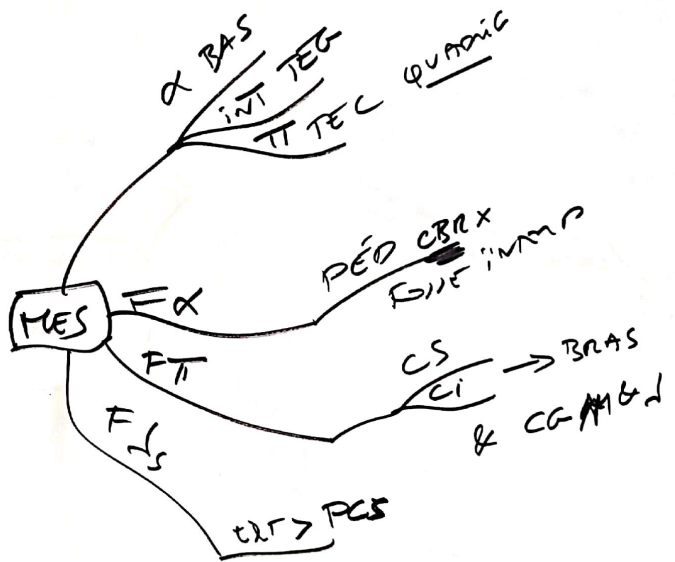
5  
PARTIES  
TRONC  
CÉRÉBRAL

AQUEDUC  
BAS → TEG → TEC

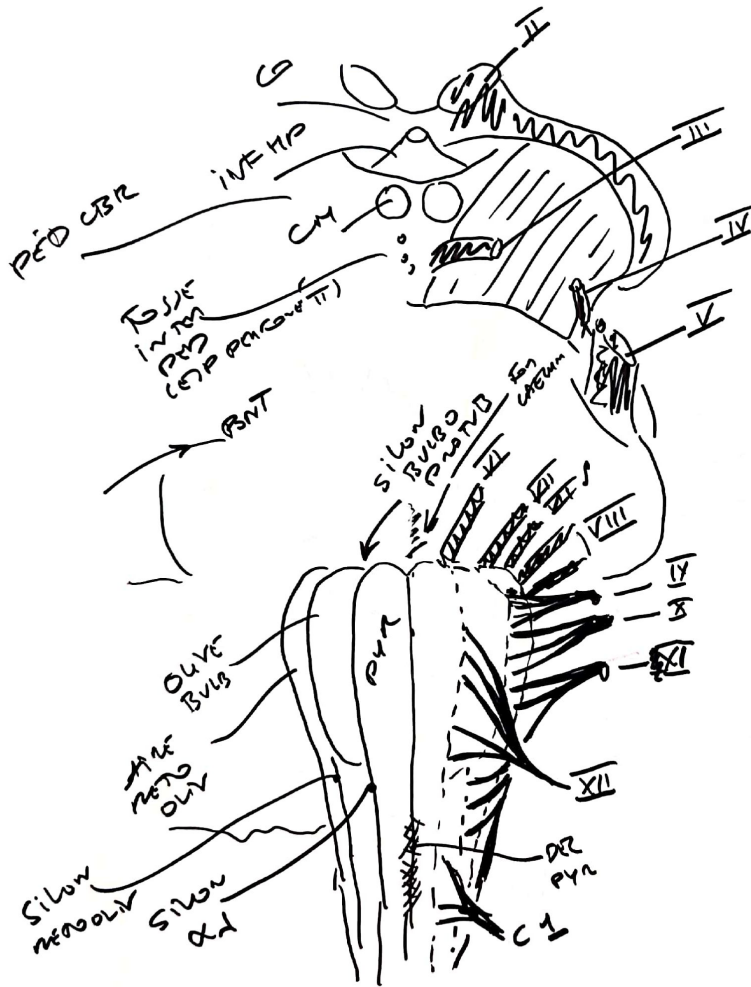


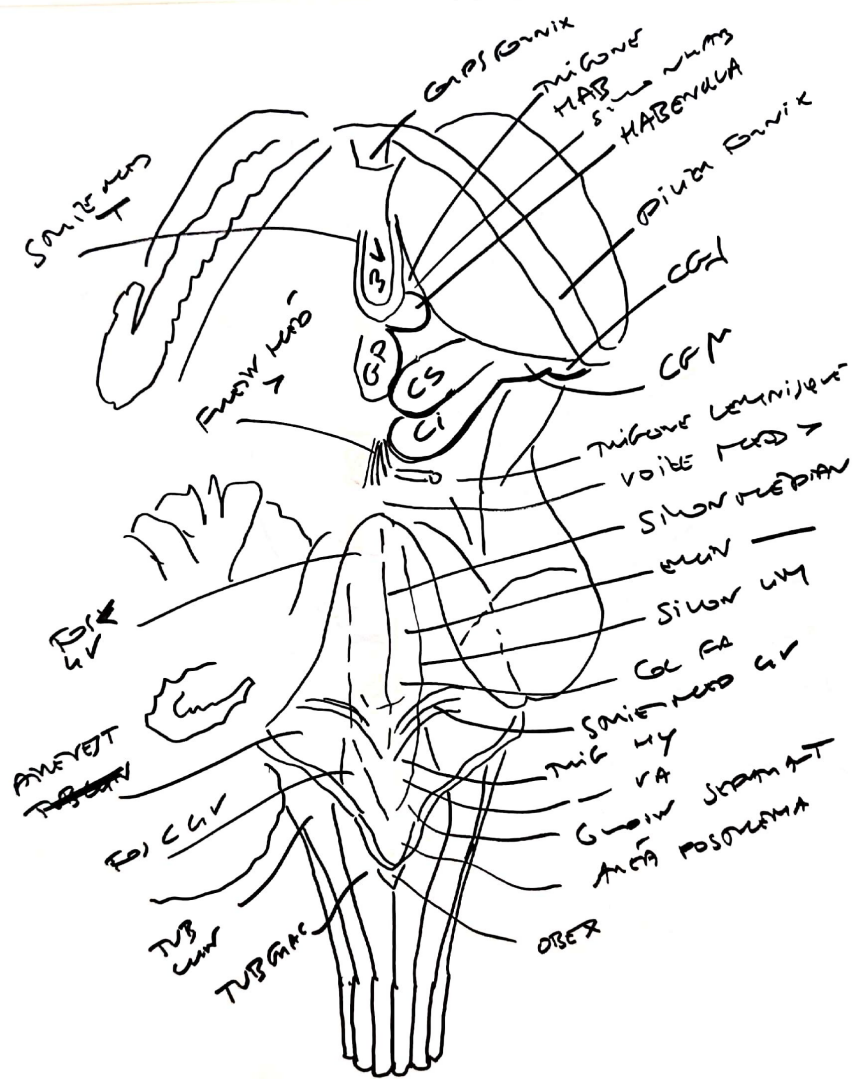






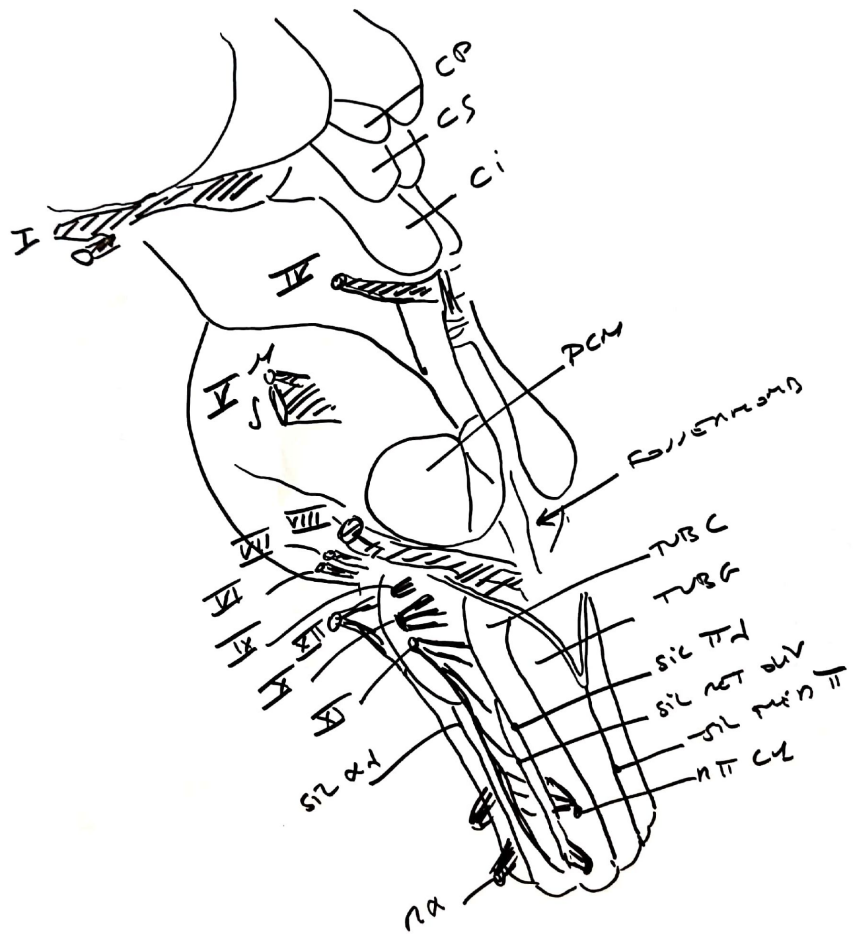
2  
TRONC  
ENC

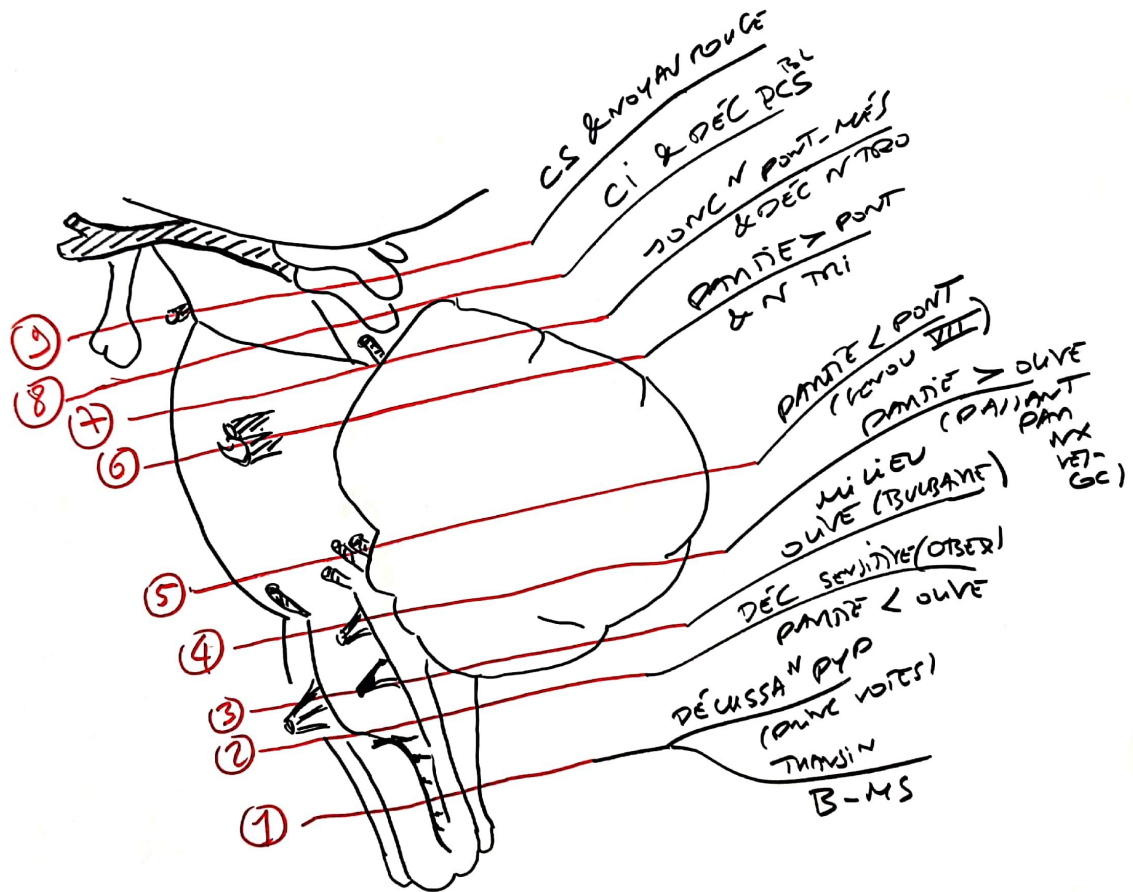


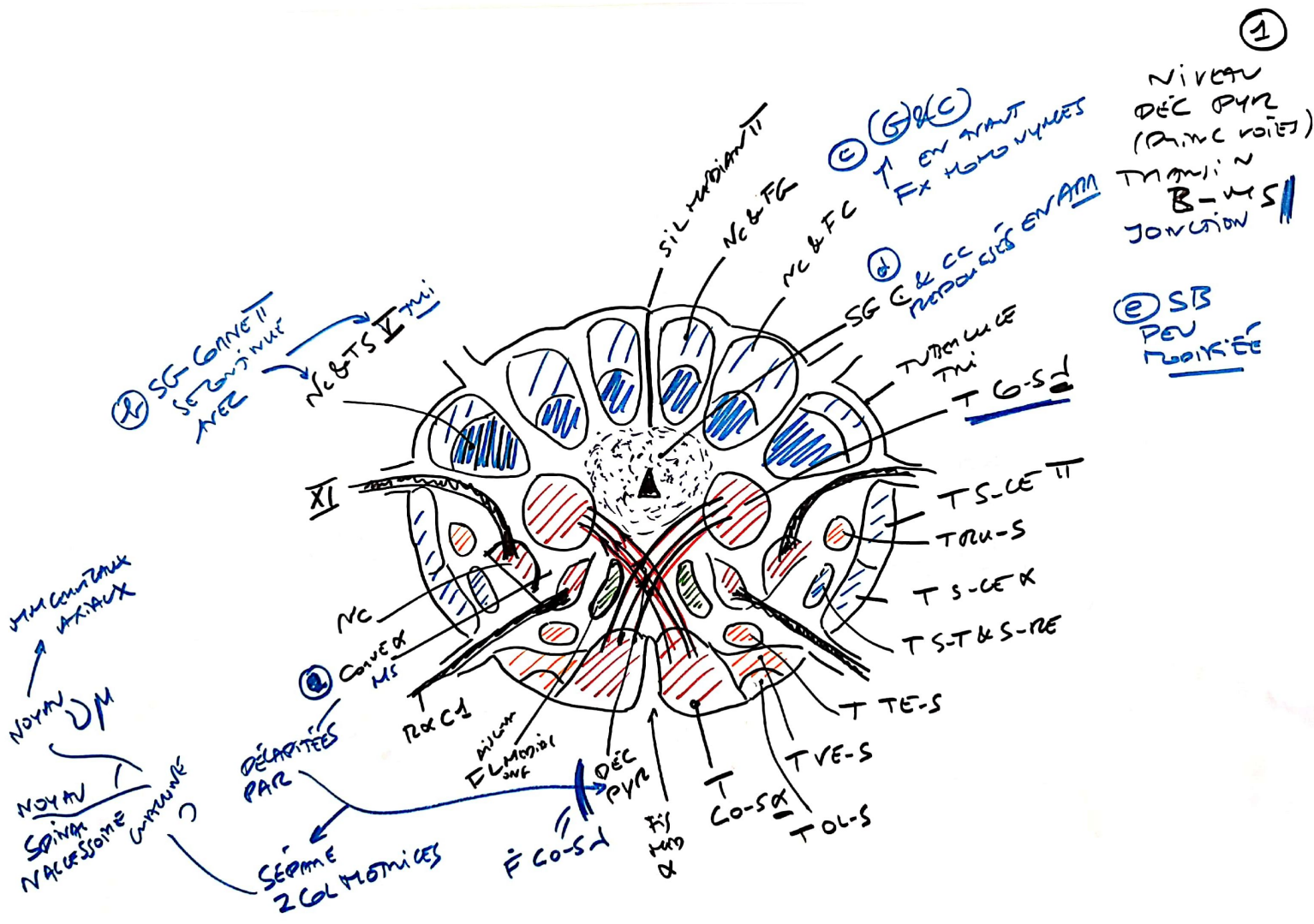


3  
 THONC  
 VUE II  
 + ABLAN  
 HENY CBL D

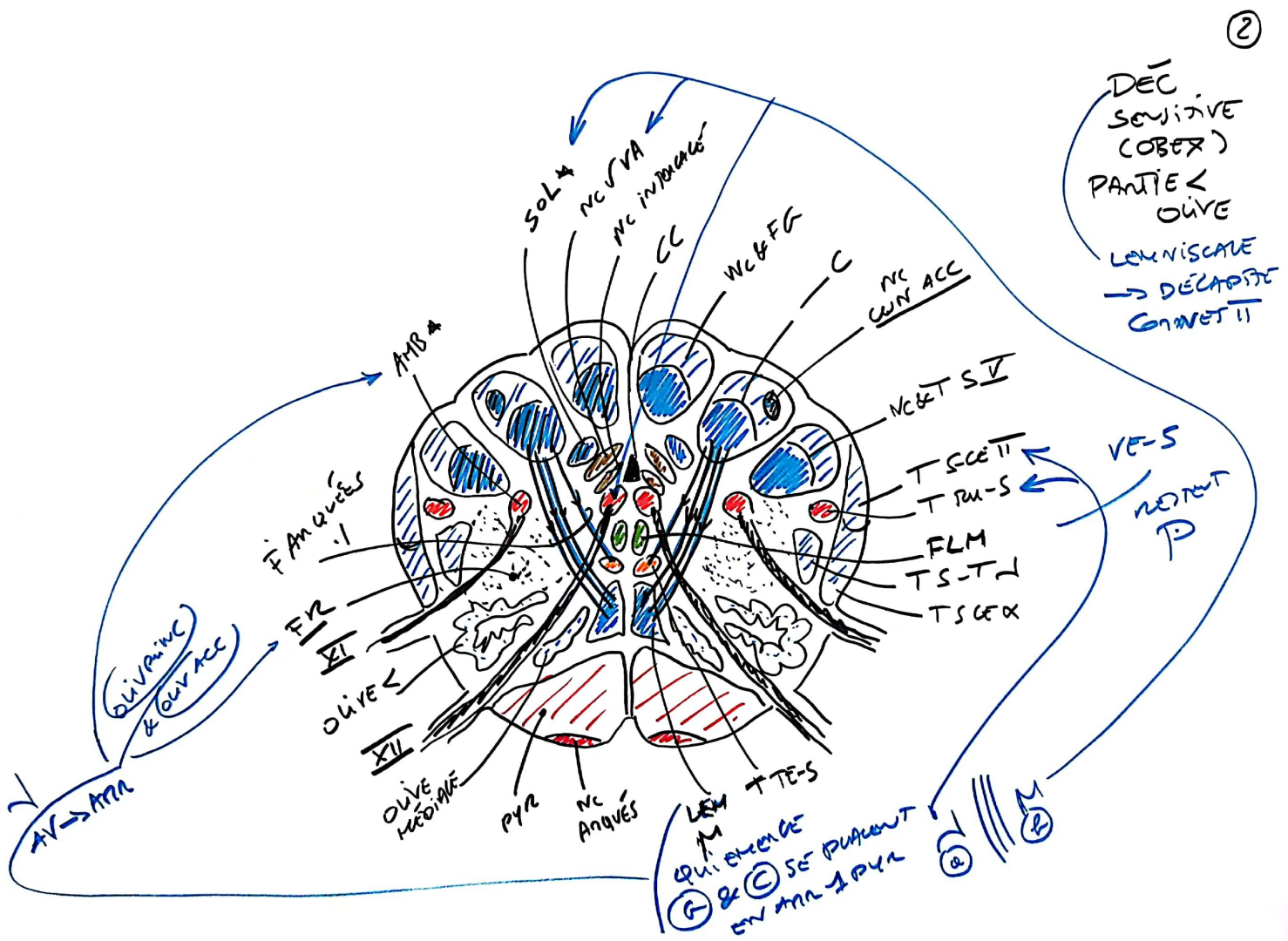
TRONG  
VUETTIN

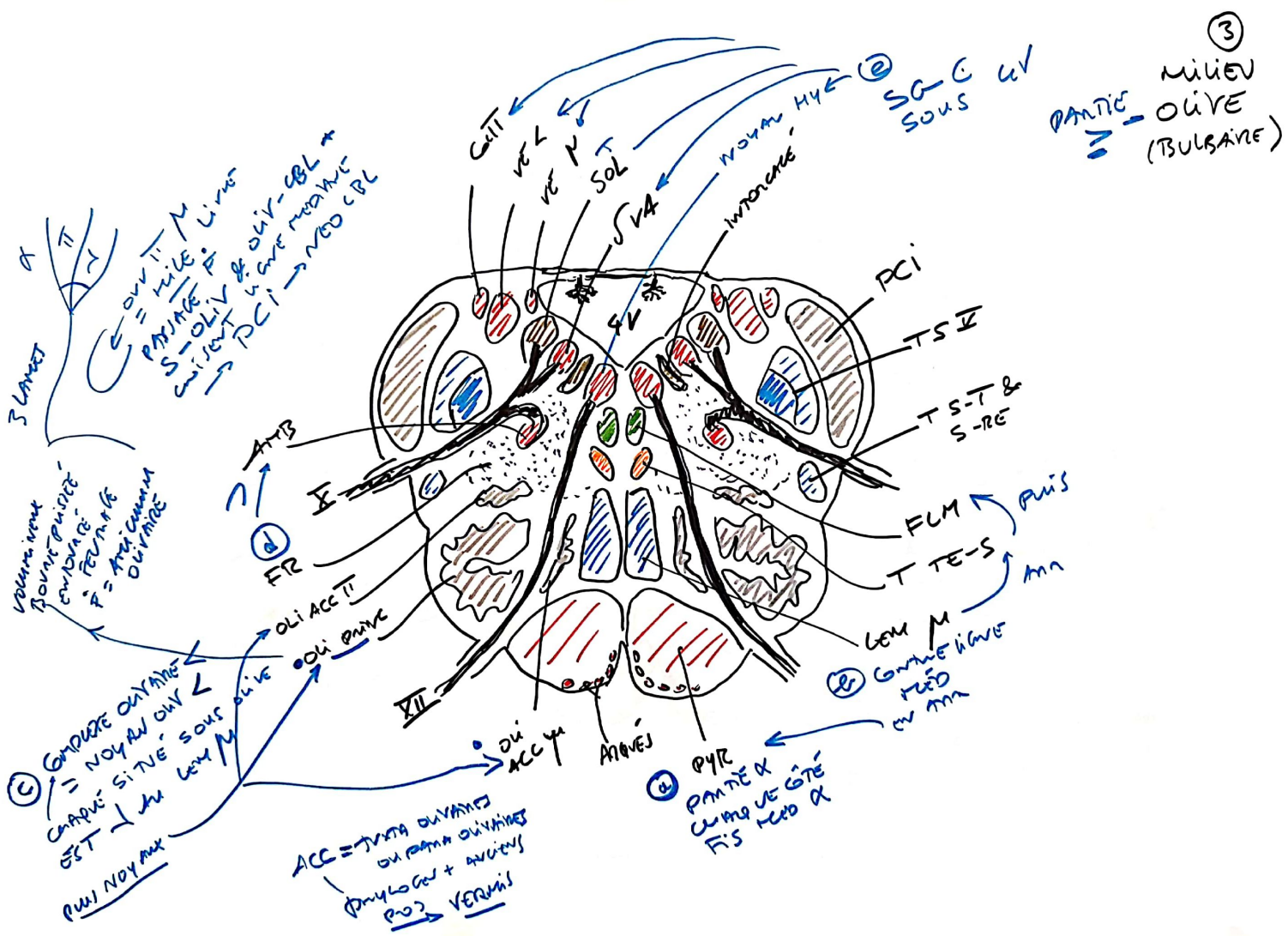


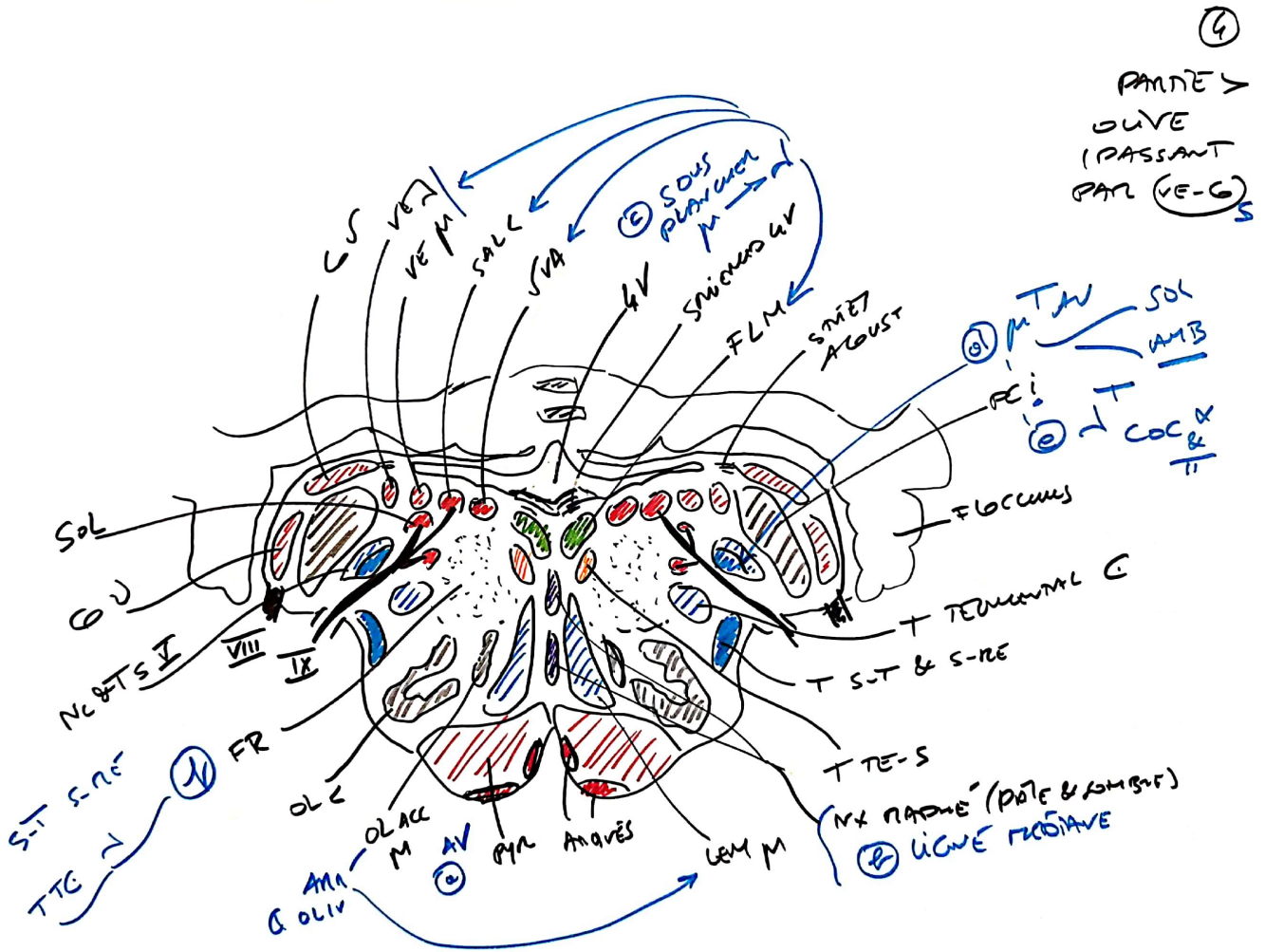








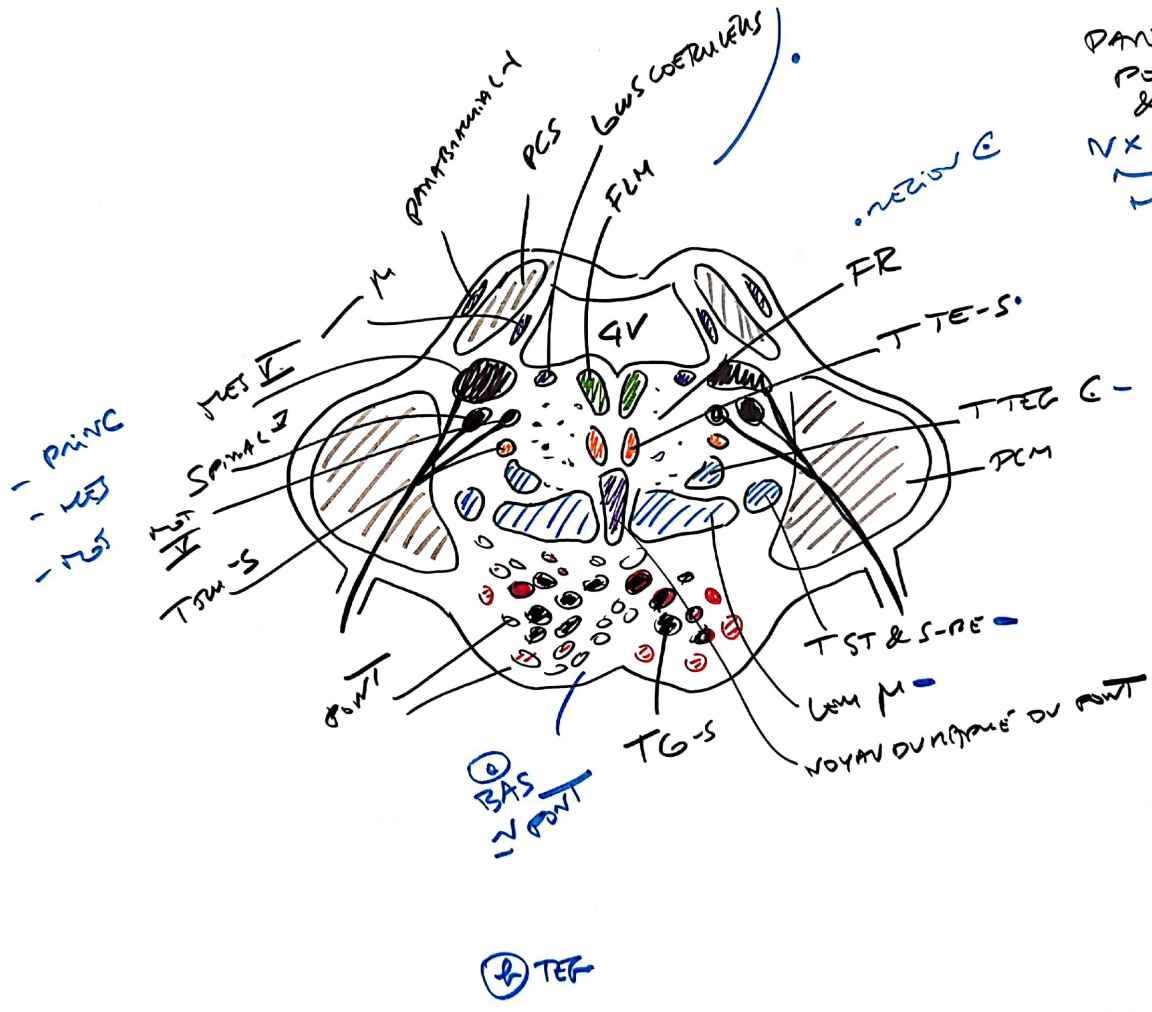








6

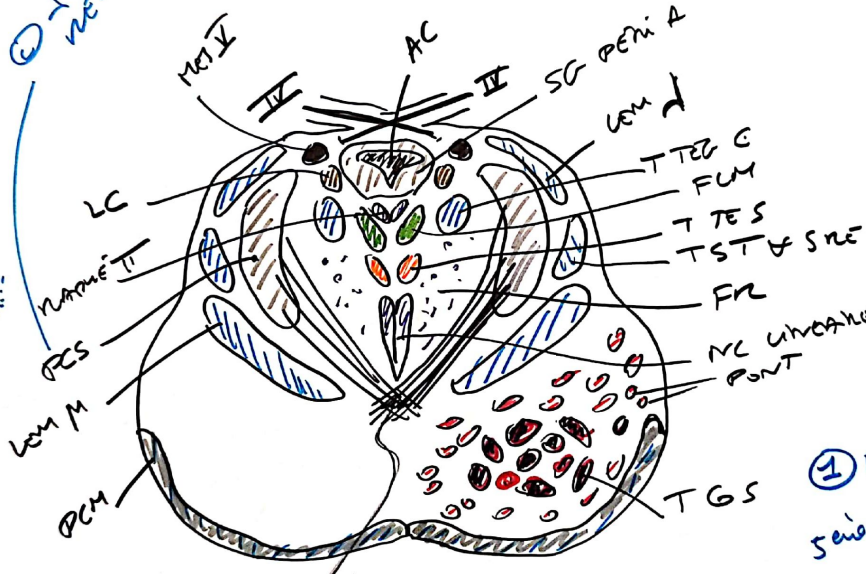


⑦

DONC  
PONT-MÉS  
& DÉC TRG  
EMERGENCE  
TRG

① I T  
NEURONS  
NT  
I T  
LC  
T<sub>S</sub> S-T S-RE

② Chaque GTE  
si GTE  
AV → ANA  
- NC  
- I  
- T  
- FUM  
- SG-PA

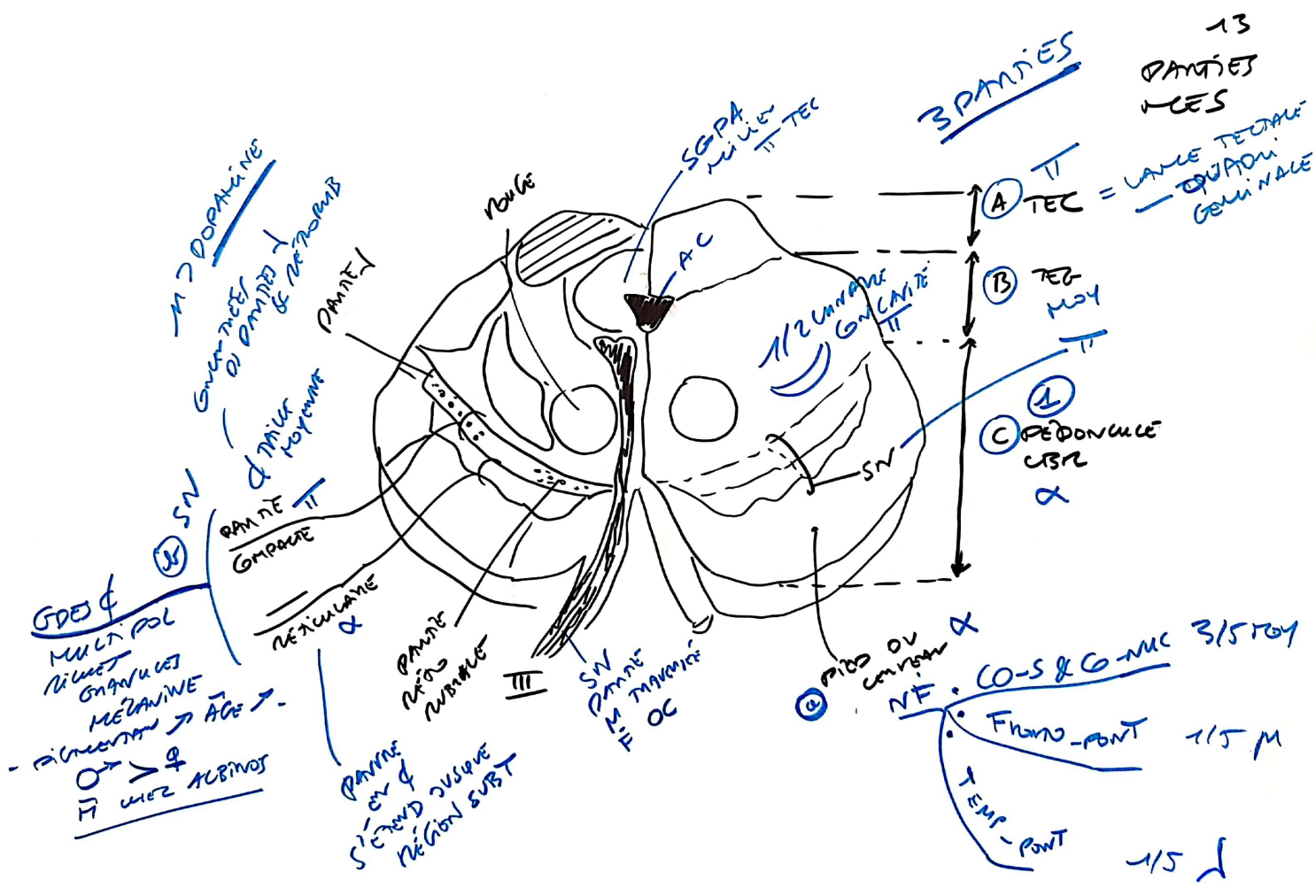


③ AV  
- DÉC  
- FUM  
- I T  
- G-TE  
- Lem M

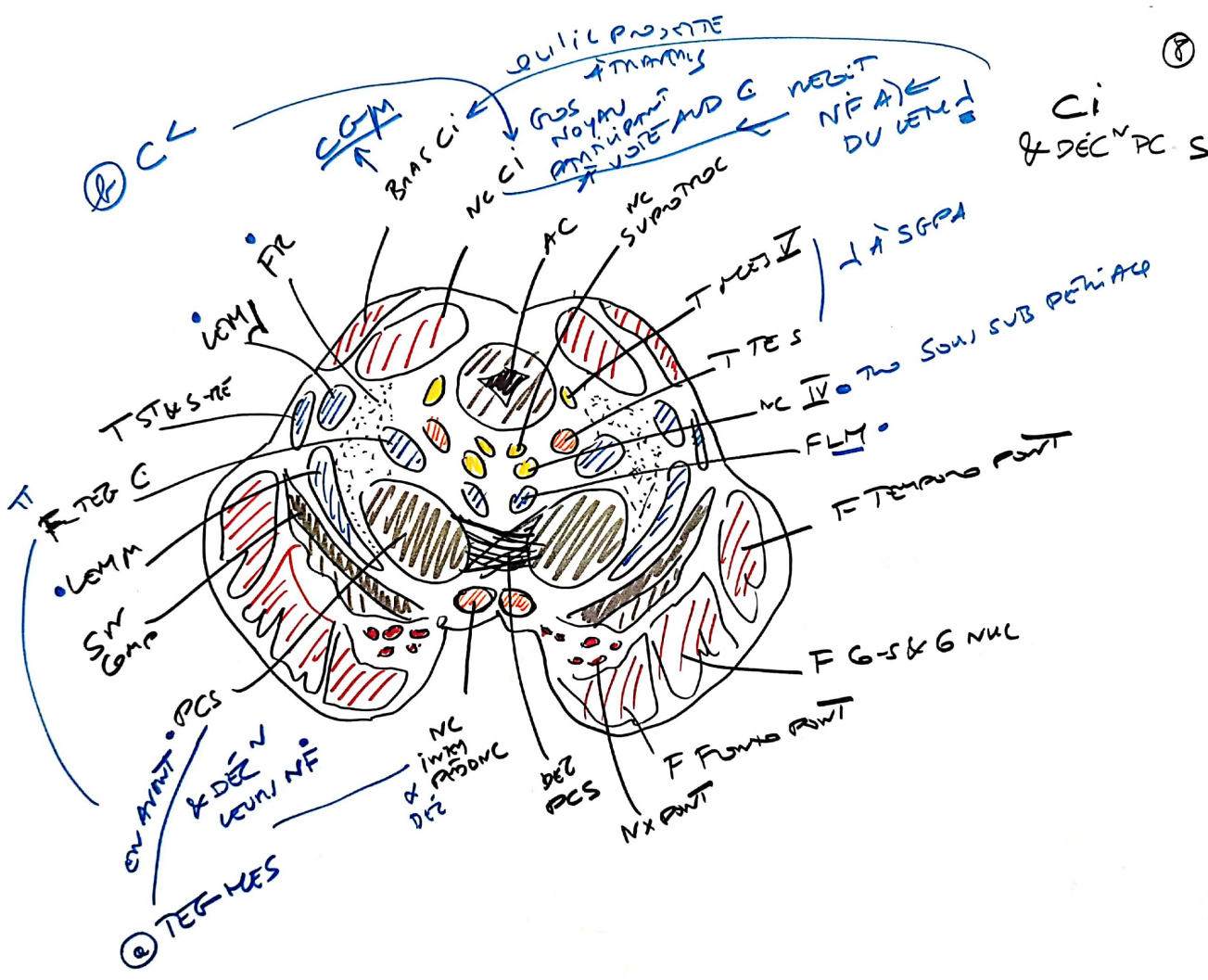
② TEG

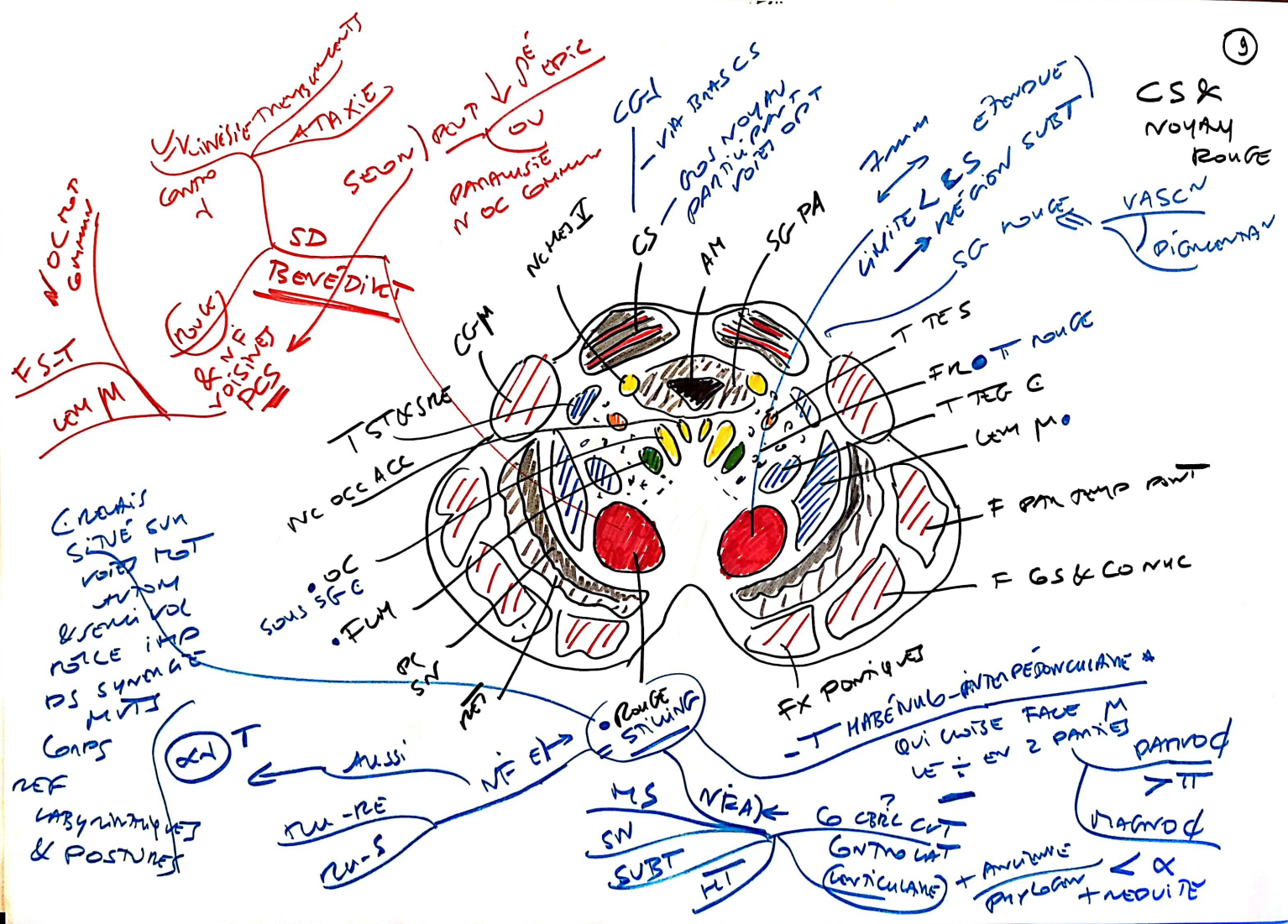
① BAS  
CHACQUE GTE  
Séq M F G-MUC  
3 I INT F G-S  
5 → 12 F G-PONT



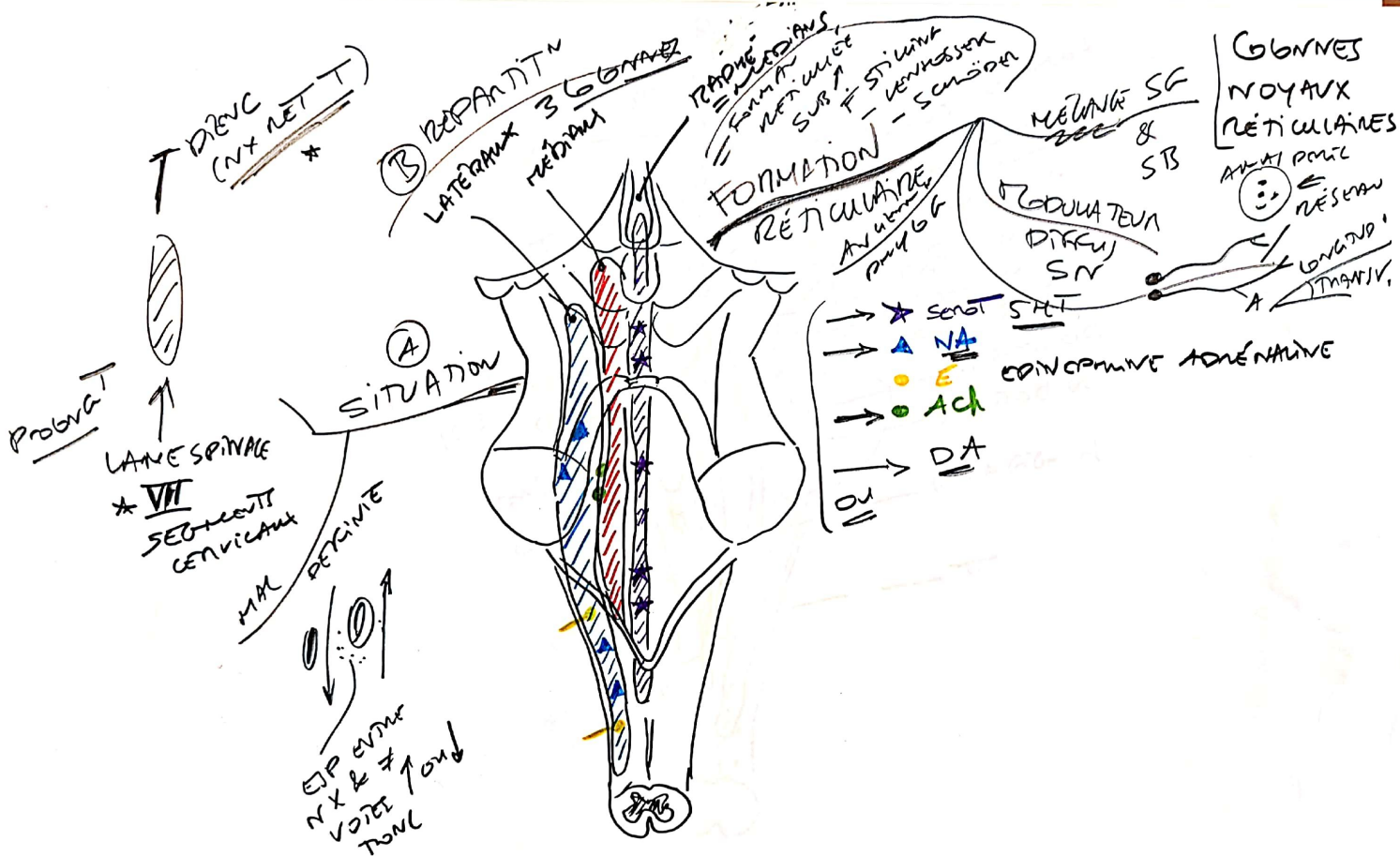


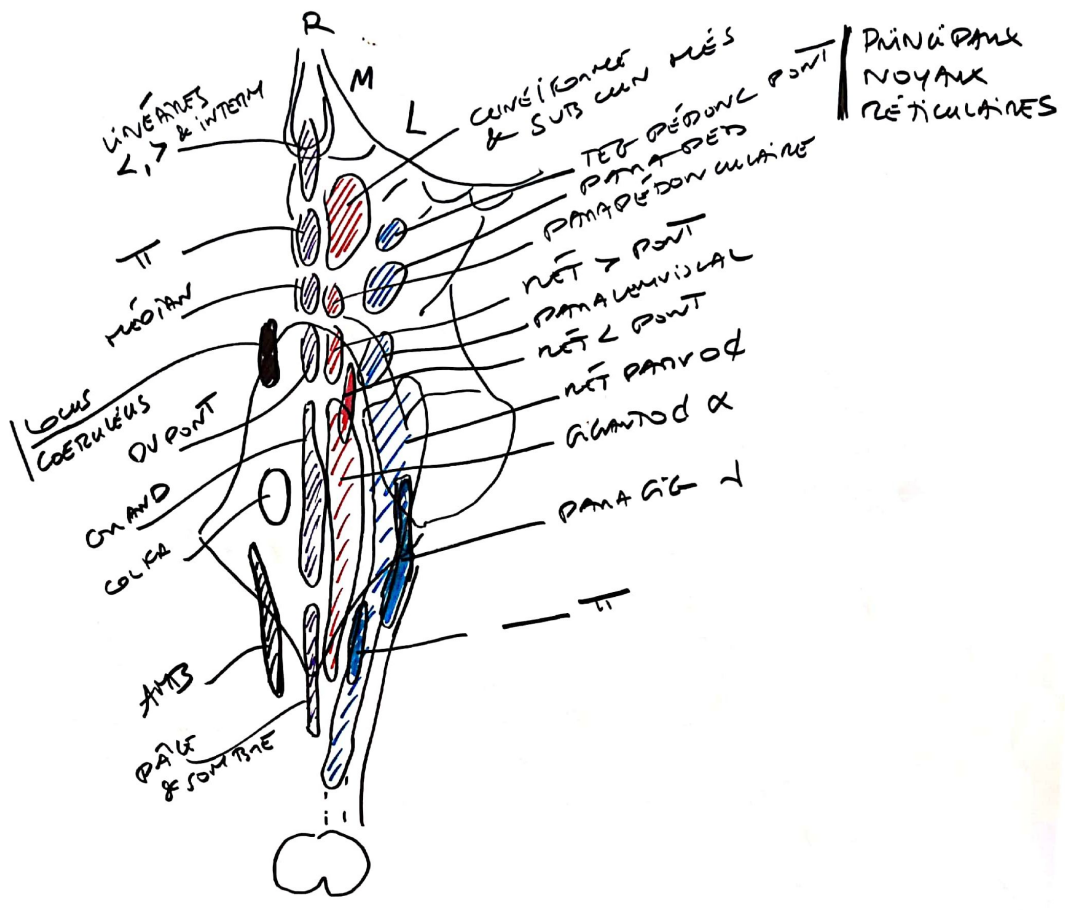




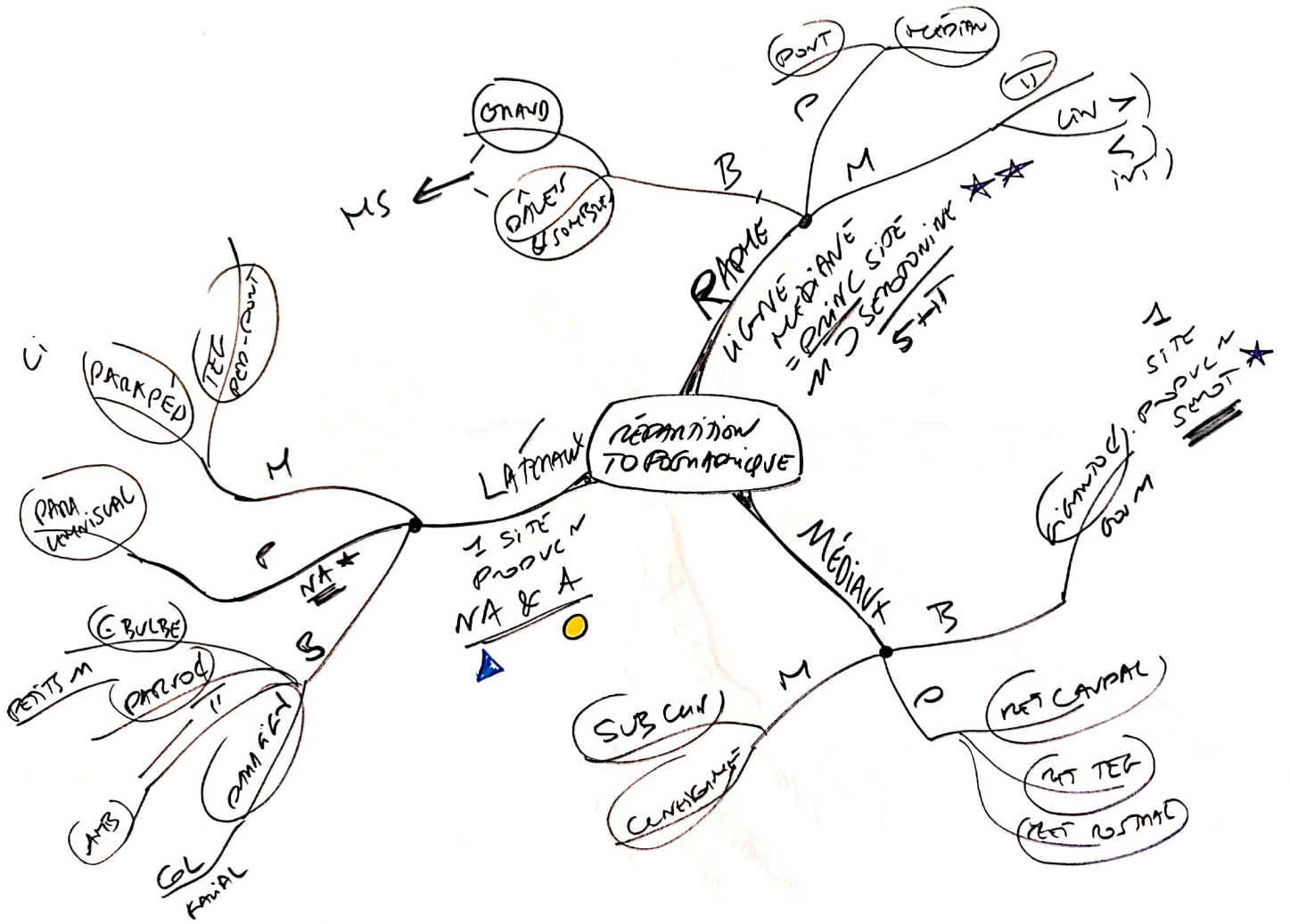


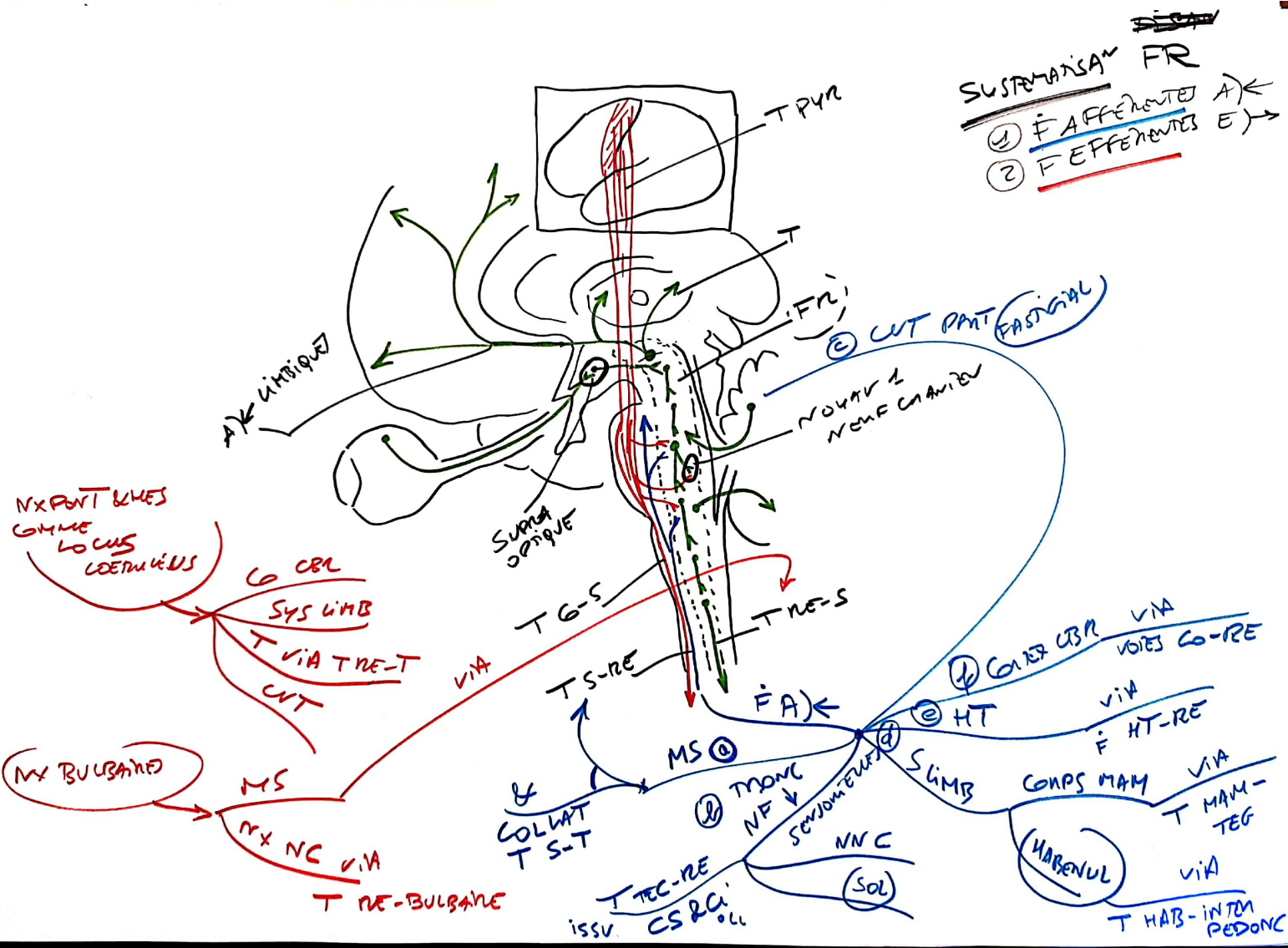


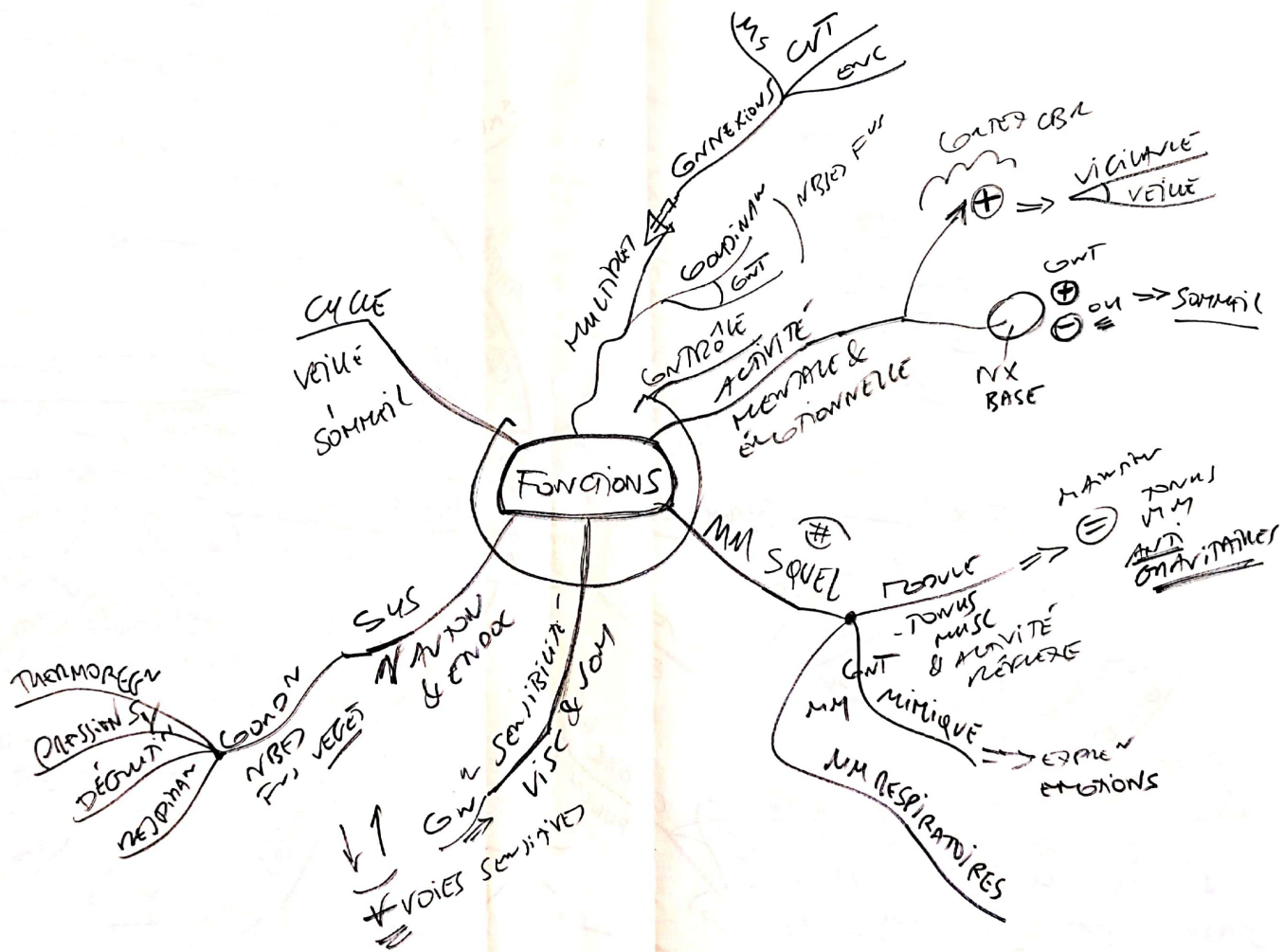


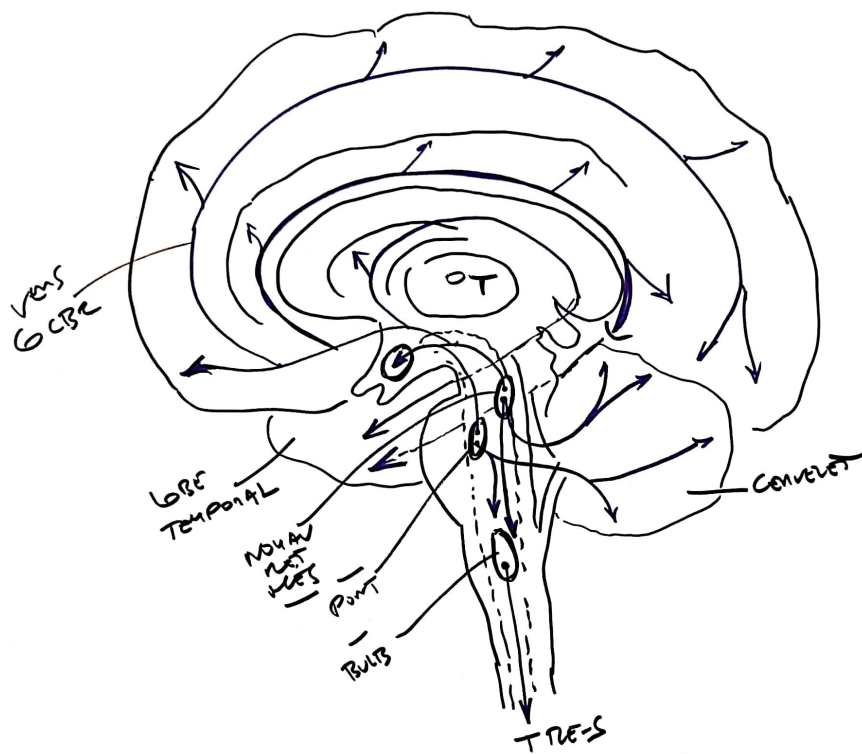












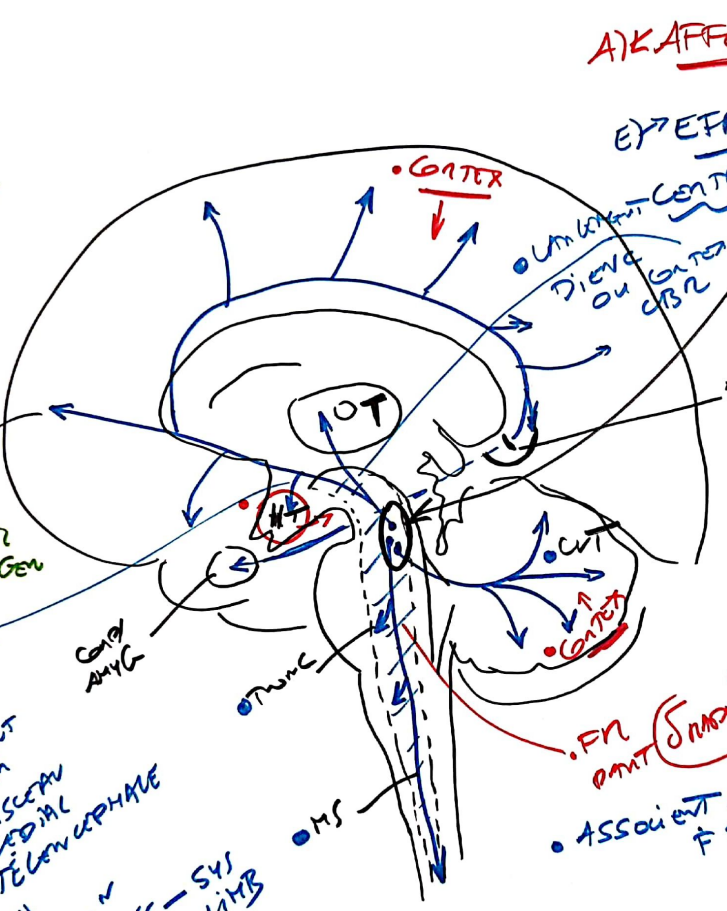
~~SISTEM~~  
 NOYAU  
 RAPHE  
 SISTEMANGAN  
 (NEURONET  
 SEROTONINERGIC)  
 SHIT

FONCTION =  
 - NA ( ) NA  
 POST  
 SYMP

- SIMILITUDE DIFFUSION  
IN SELOT NAPHÉ  
 ?  
 → COMPLEXION TRAITÉ  
 FONCTIONNELLE

- (LC) DOMINANT  
 VOIE INFLAMATOIRE  
 SPÉCIFIQUES  
 IMPULSIVE  
 MOUVANT A TRAVERS & CÉLÉ  
 EN GEN

- APPRÉHENSION  
 MÉTHOQUE  
 ANXIÉTÉ  
 DOULEUR  
 MAF CONSTAT  
 → LE/ OXYMÉTAN  
 FORMET  
 EN → SENSIBILITÉ  
 FACE → ENVT  
 ⇒ α III (C)  
 MGT & SENSIT  
 SENSUM



A) KAFFÉRENTES

E) EFFÉRENTES

CENTRALES

SYSTEMATISAN  
 LOUS  
 COERUEUS  
 (PROJECTION  
 NEURONES  
 NOTADRENERGIQUES)

TEG PONTINES  
 PAR 011  
 GONIDRE  
 1 NX  
 NET  
 PÉDIAUT

FORMATION  
 HIPPOCAMPIQUE

ACQUANT

COMPACT  
 ~ 12000 M  
 NIVE MÉLANINE

COAROLE  
 PEUT

→ 250.000

SYN  
 DIFFUSION DE SNC  
 PARALUMIÈREMENT  
 ÉTENDUE

→ SHT  
 VMS  
 CONTRIBUT  
 FORMEN  
 FAISSEAU  
 MEDIAL  
 TEGNOCEREBRALE  
 → GONNE N  
 TEGNES - SYS  
 LIMB

• FN (SMA) (SMA)  
 • ASSOCIÉNT MEX  
 F ↑ & ↓