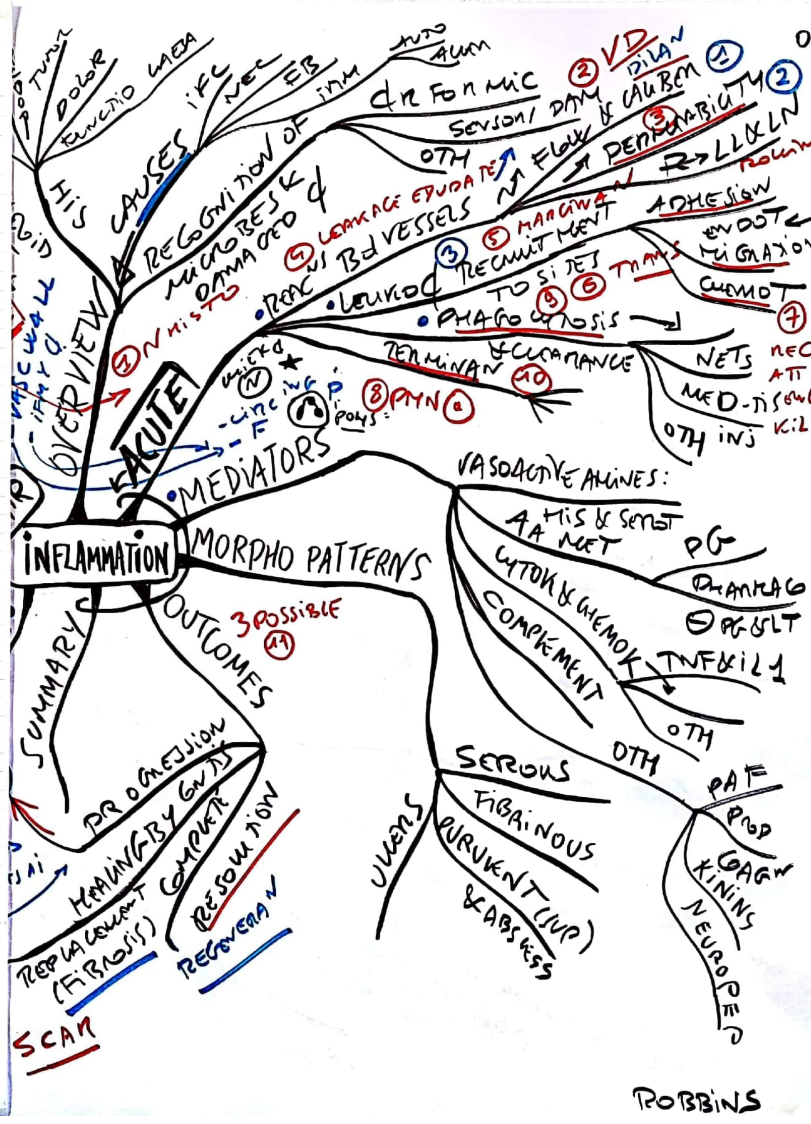
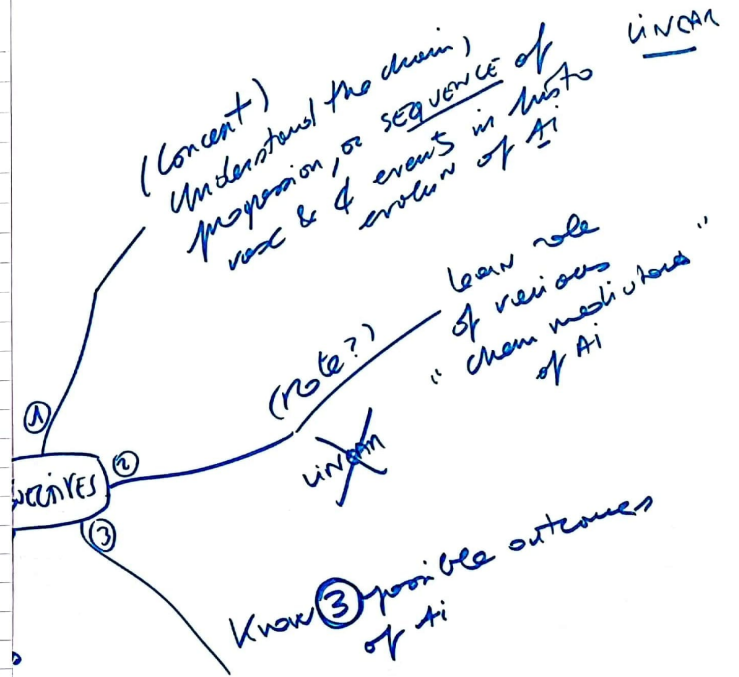
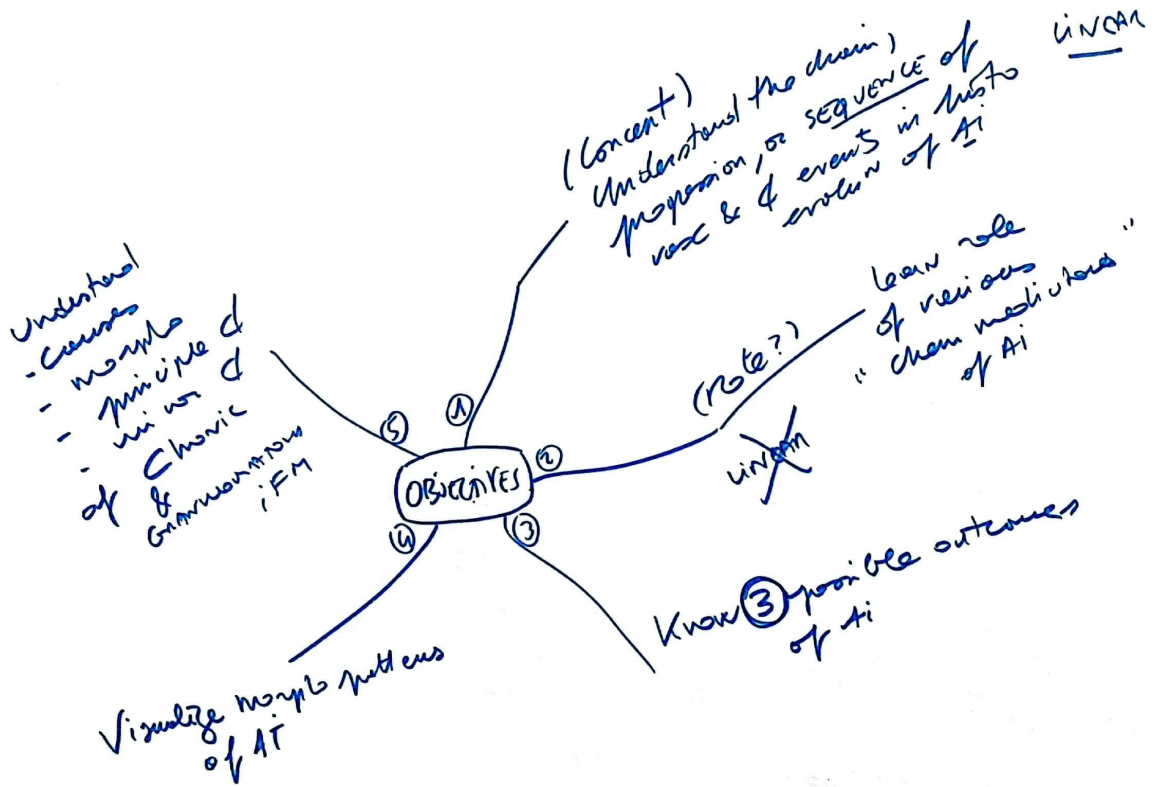


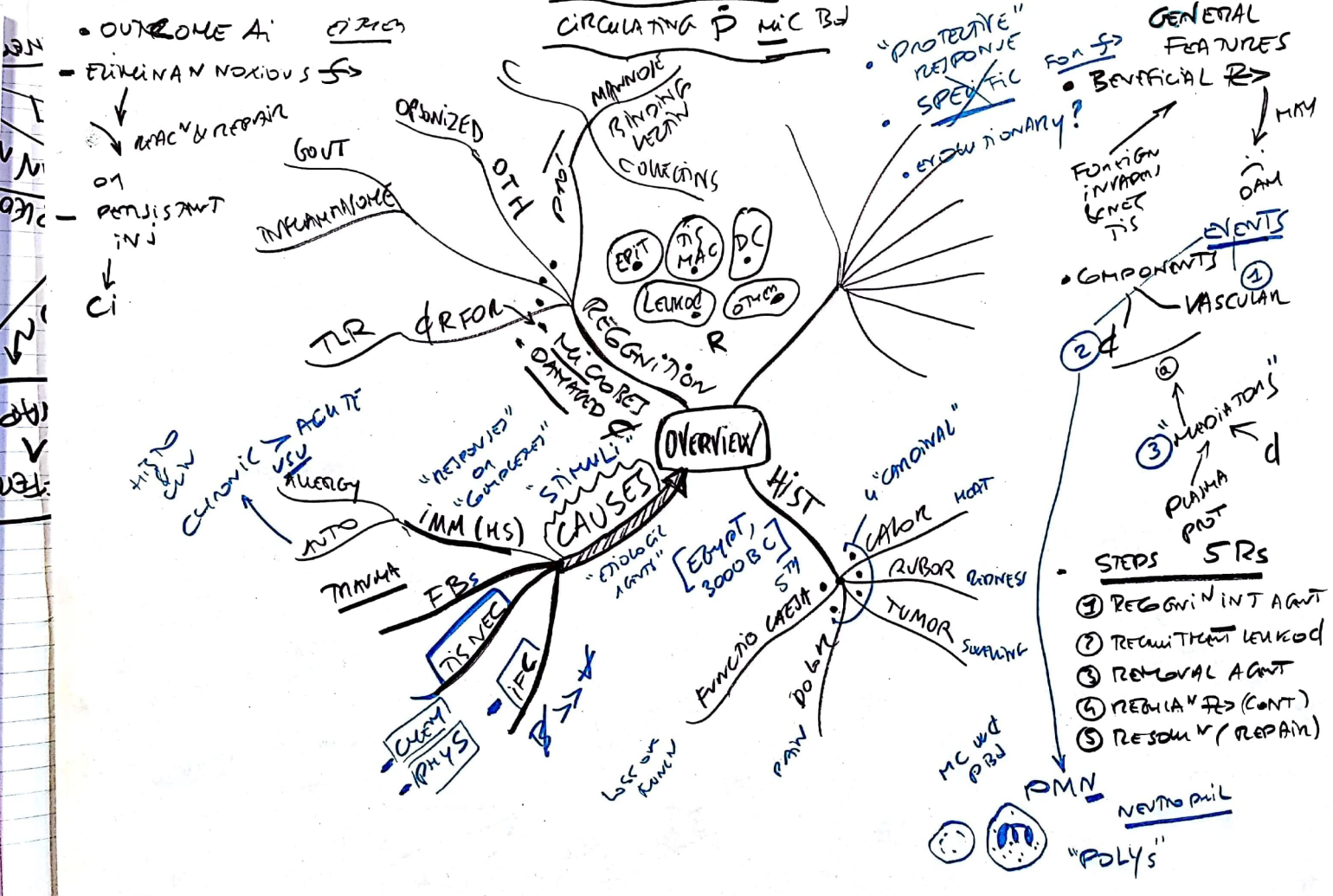
ROBBINS
03 INFLAMMATION & REPAIR

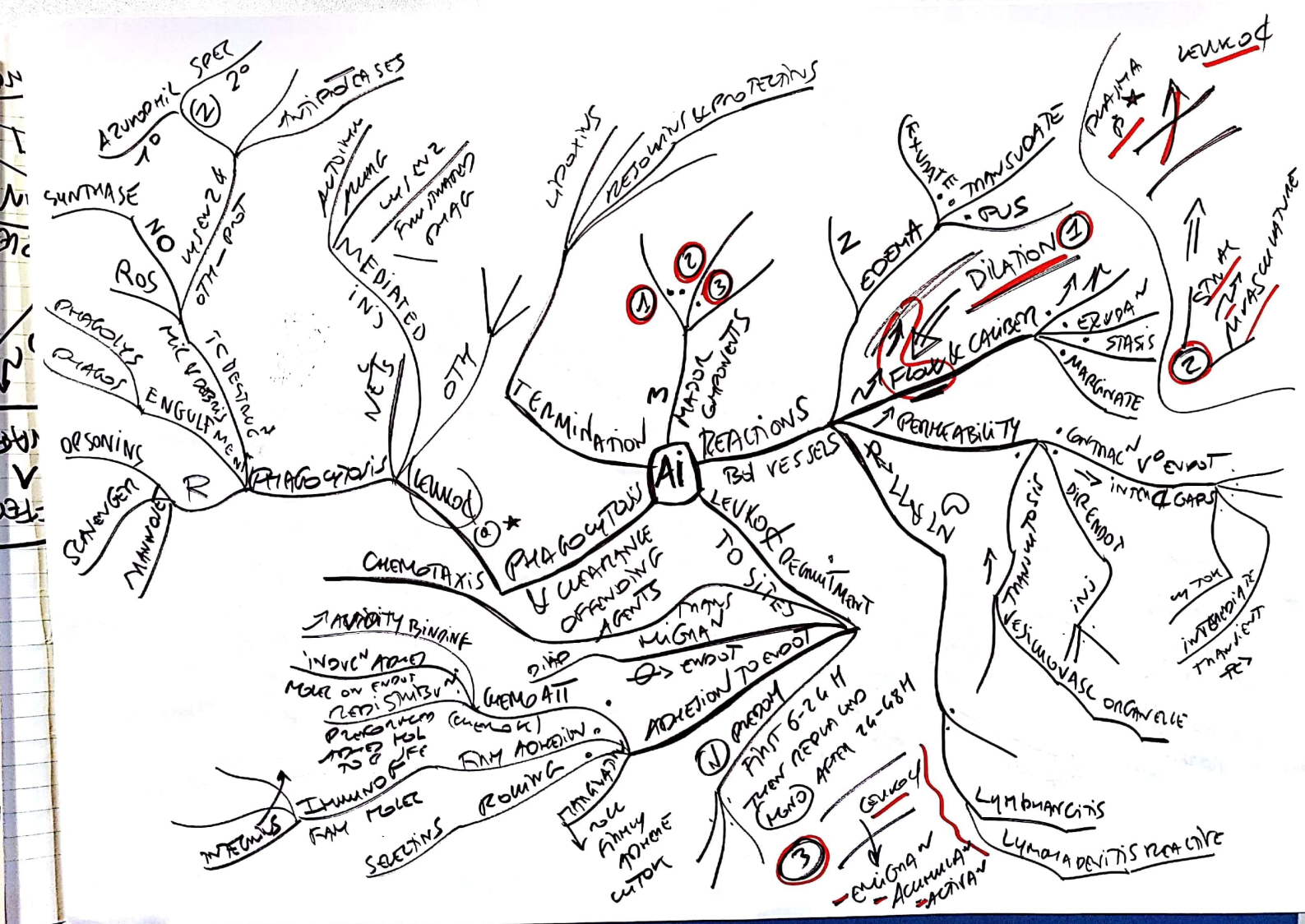


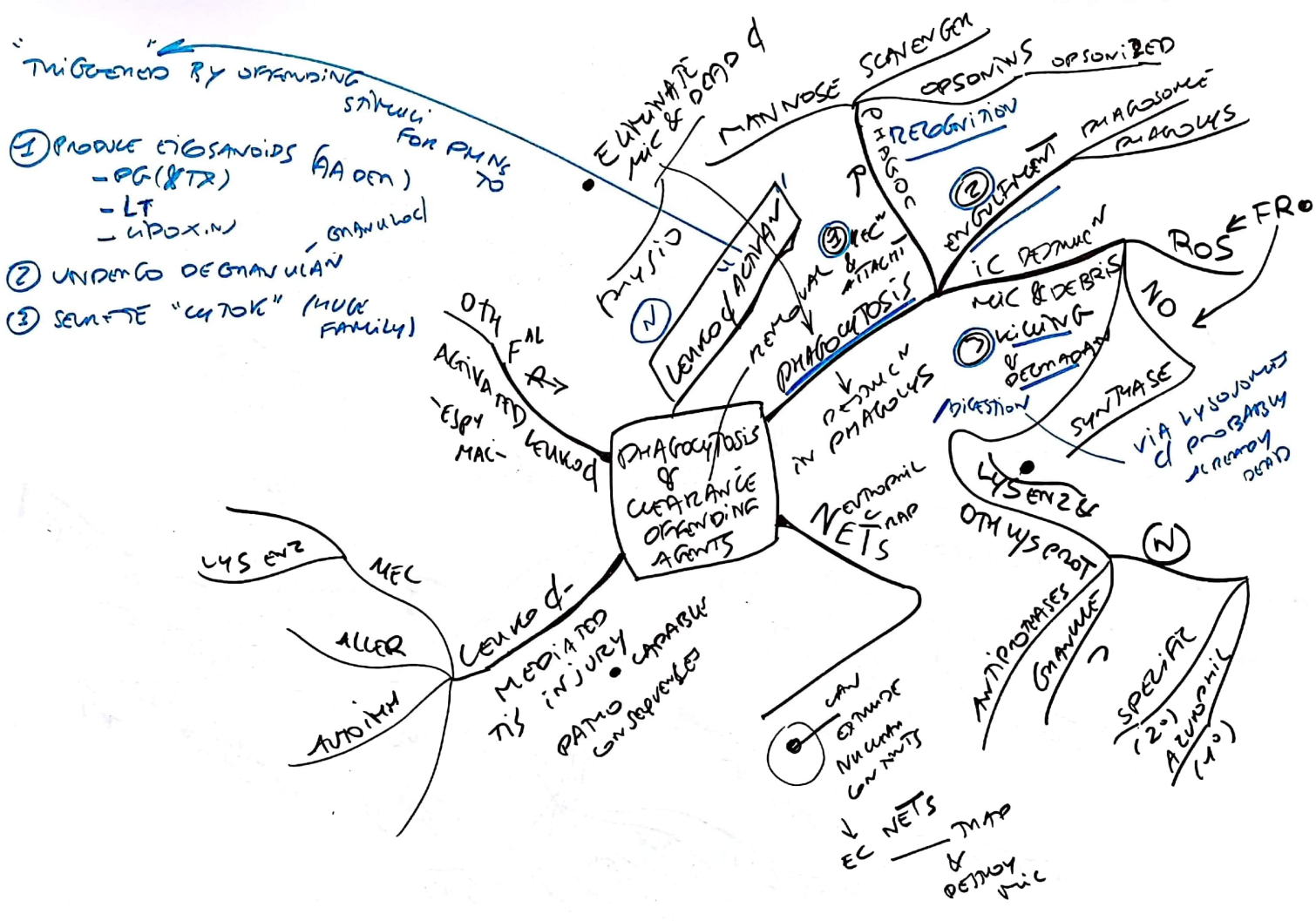
INFLAMMATION

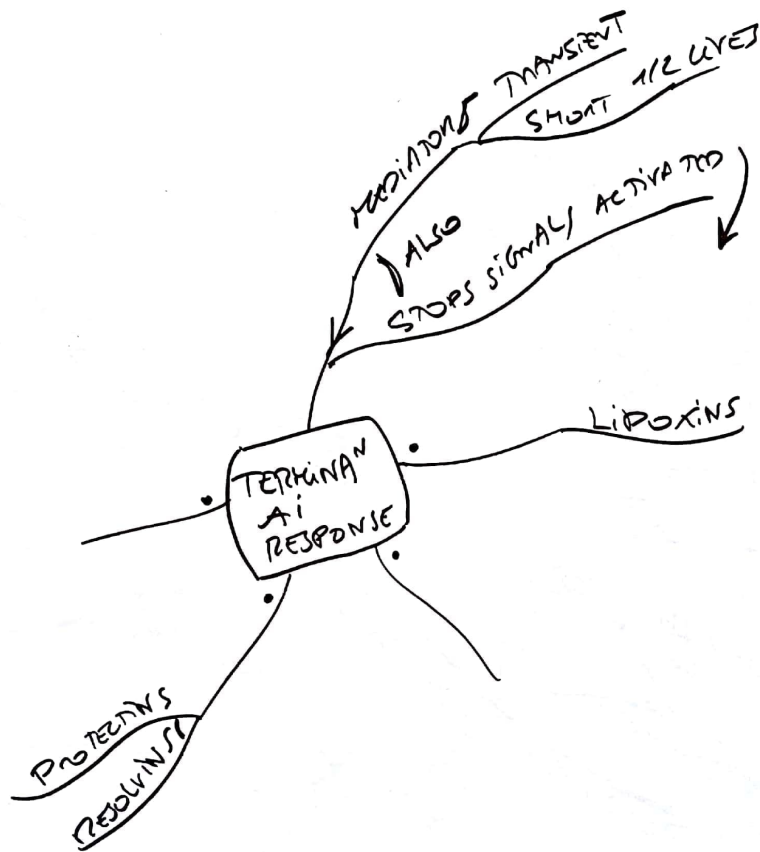


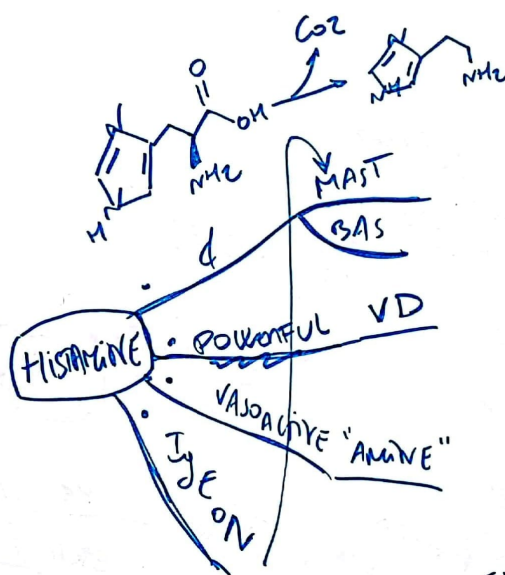


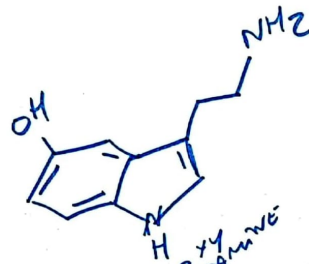












SEROTONIN

SHT
5-HT
tryptamine

PLAT

ENTERS CIRCUMPLEX

+ Gi
coupling

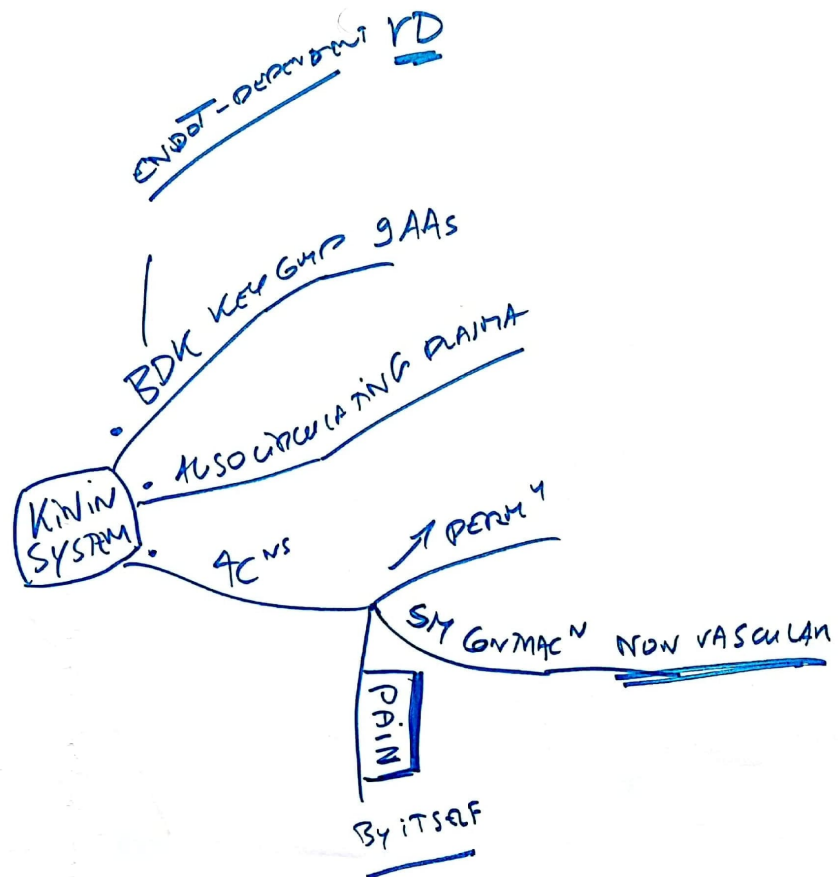
ALSO VD BUT MORE INDIC

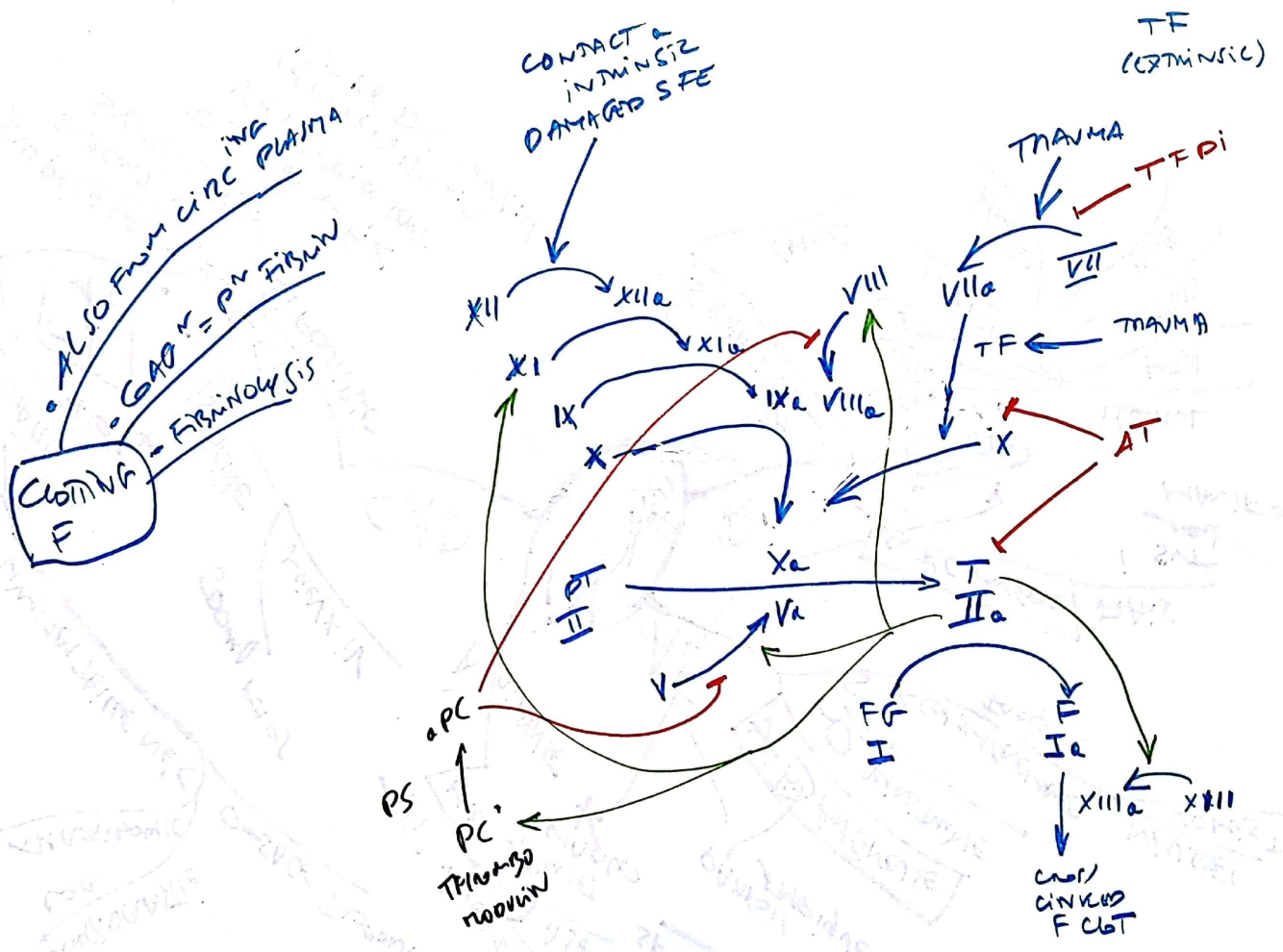
EVOKES N.O. SYNTHETASE (ALIGASE)

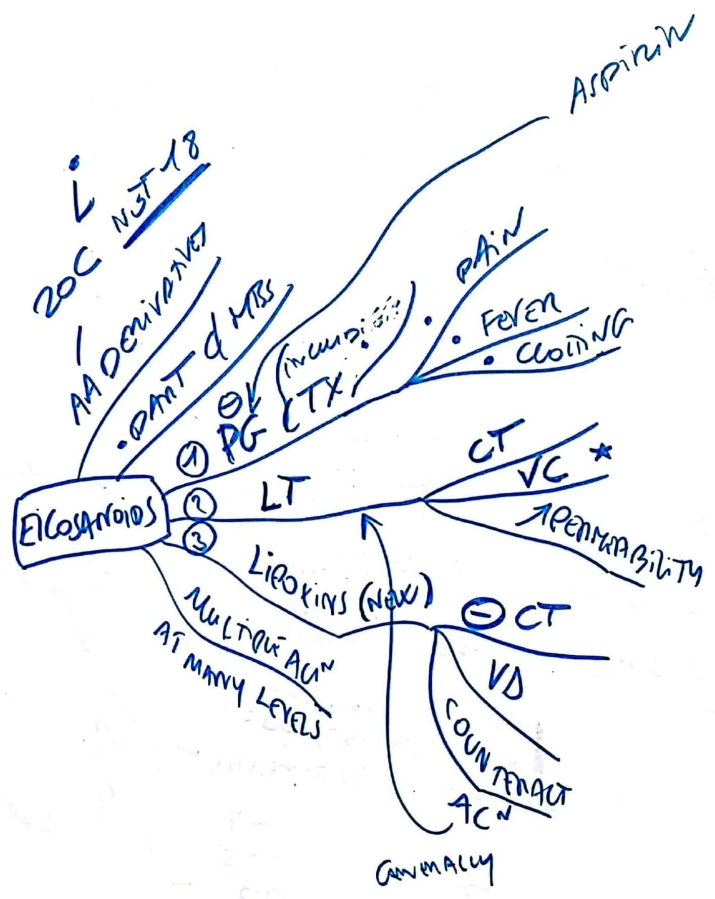
involved

FOR ANGIOTENSIN

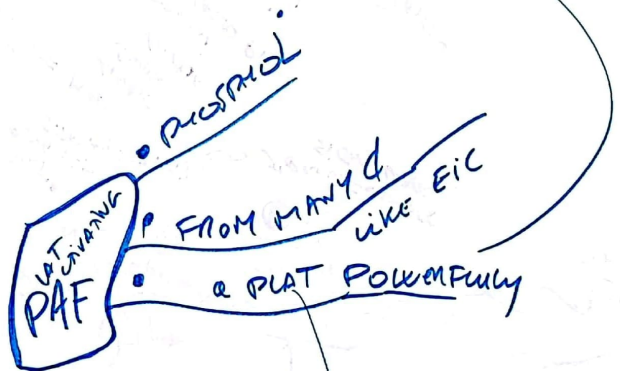
FULL SPECTRUM EMOTIONAL RE





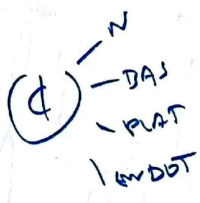


Ar
 GAG
 u



NVP
OXIDATIVE
EVALUATE
CT LEVELS
→ AA TEST
IN PLAT

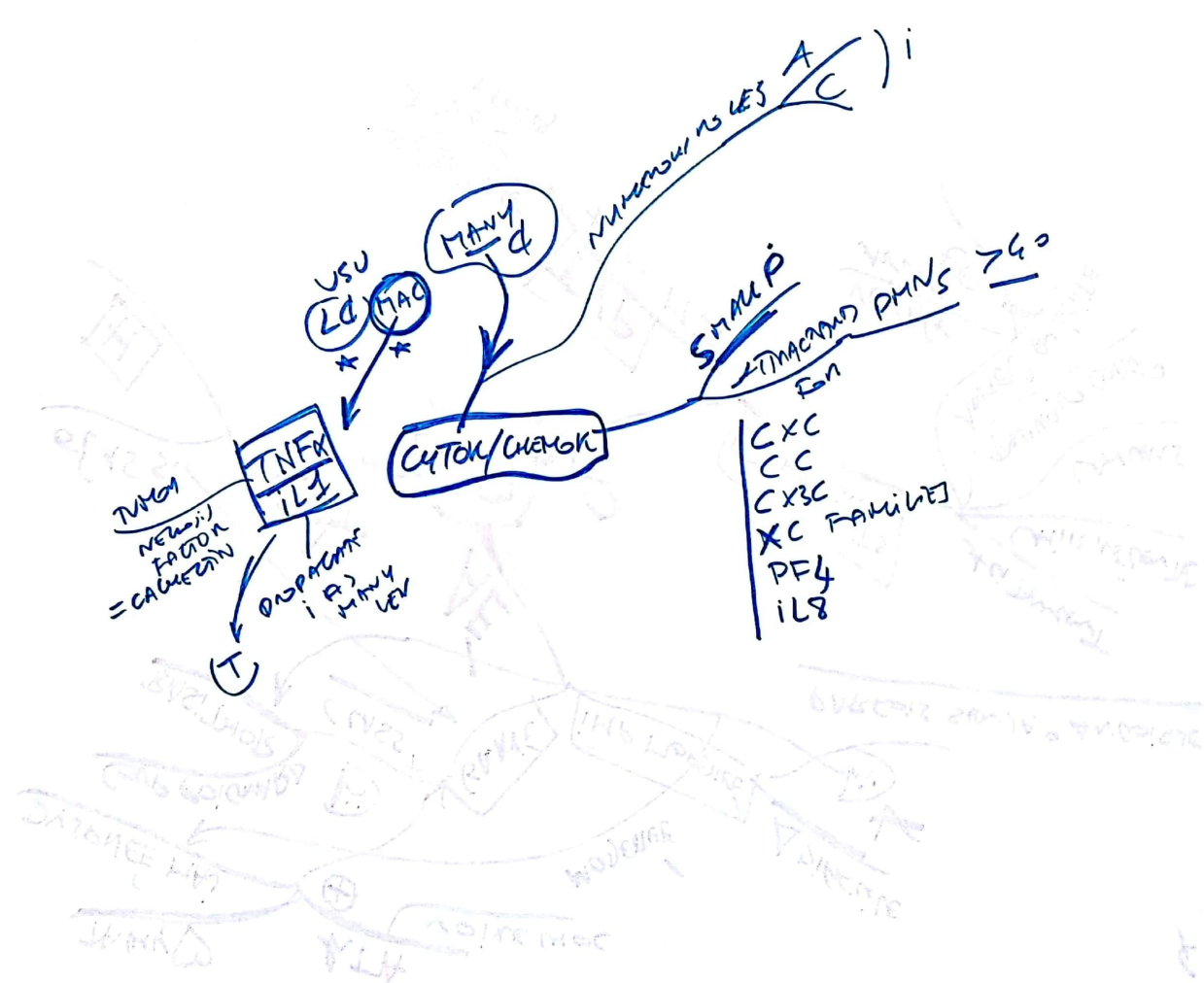
SPEP
→

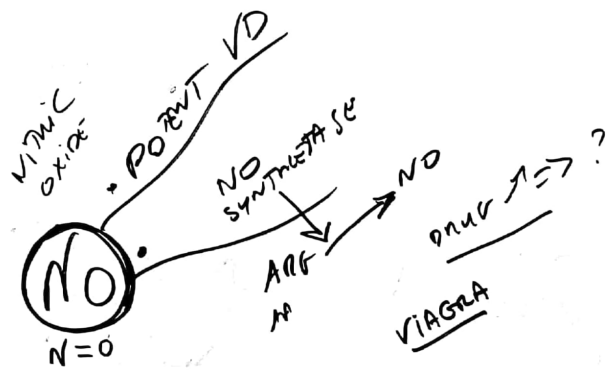


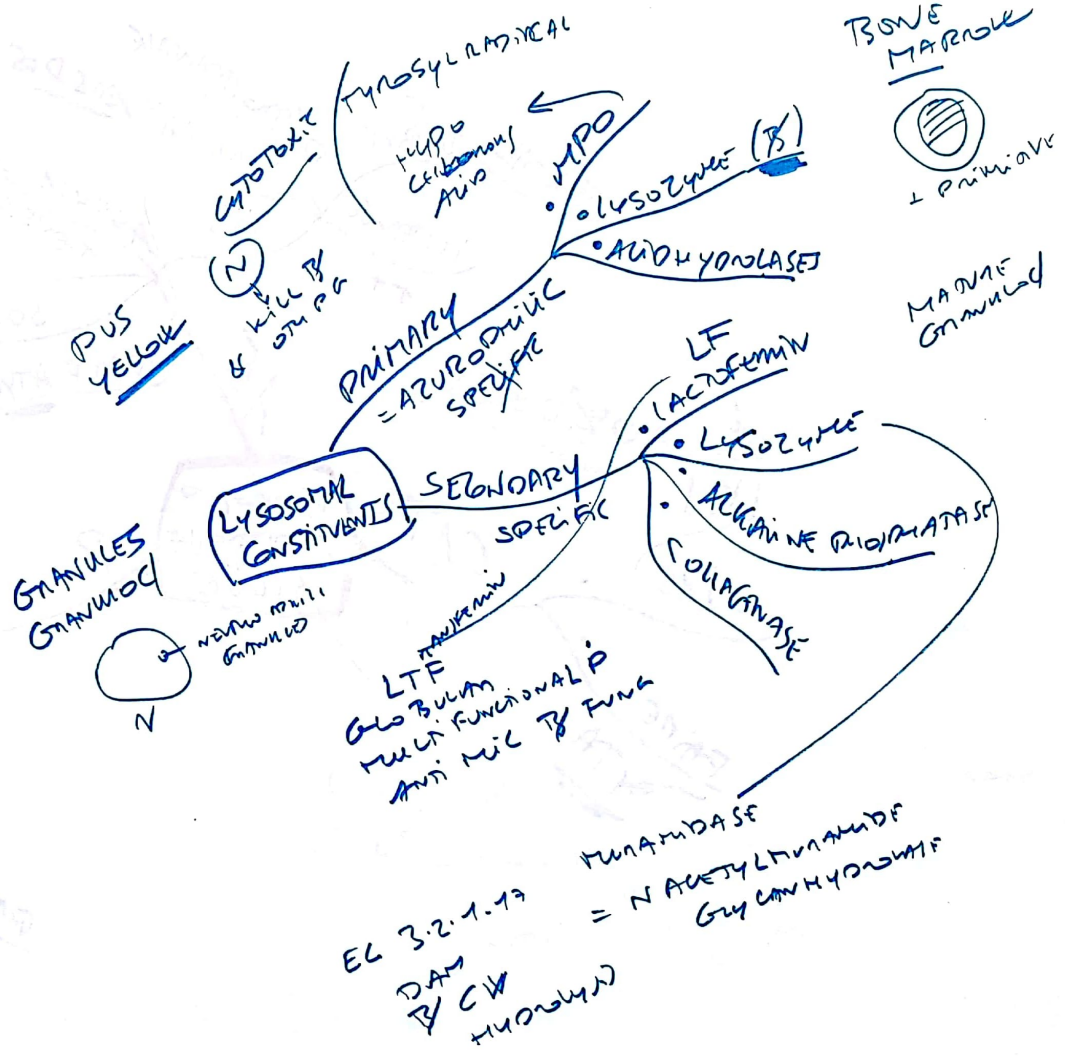
PAF-ADAMEN
1. level control &
AGPE
2. use source

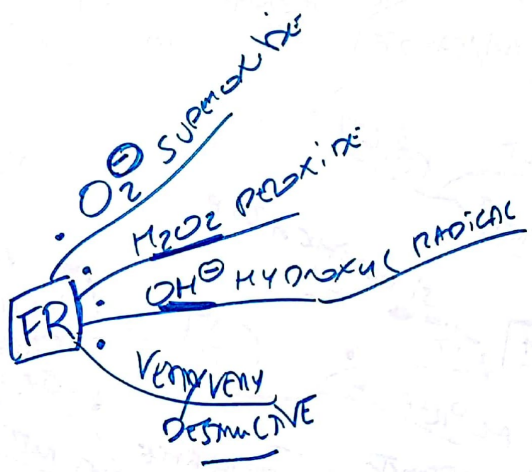
& V FUNDATION
MANU LEVELS OF F

AGGREGATION
DEFINITION

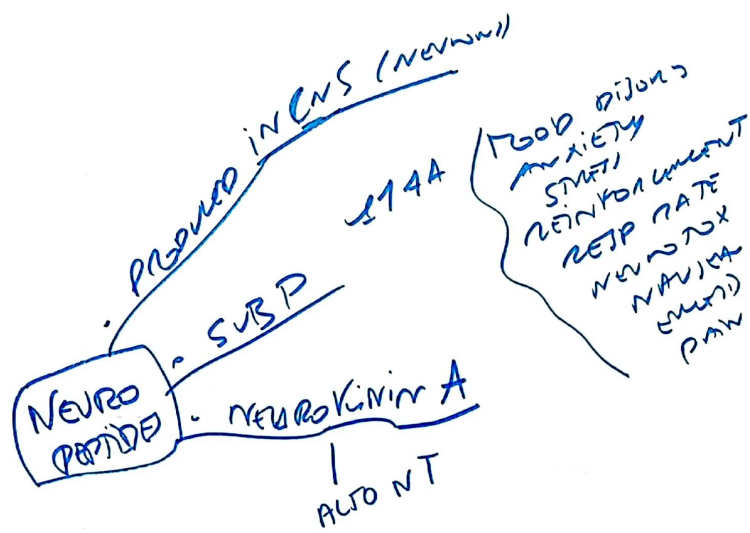


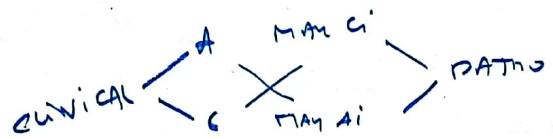
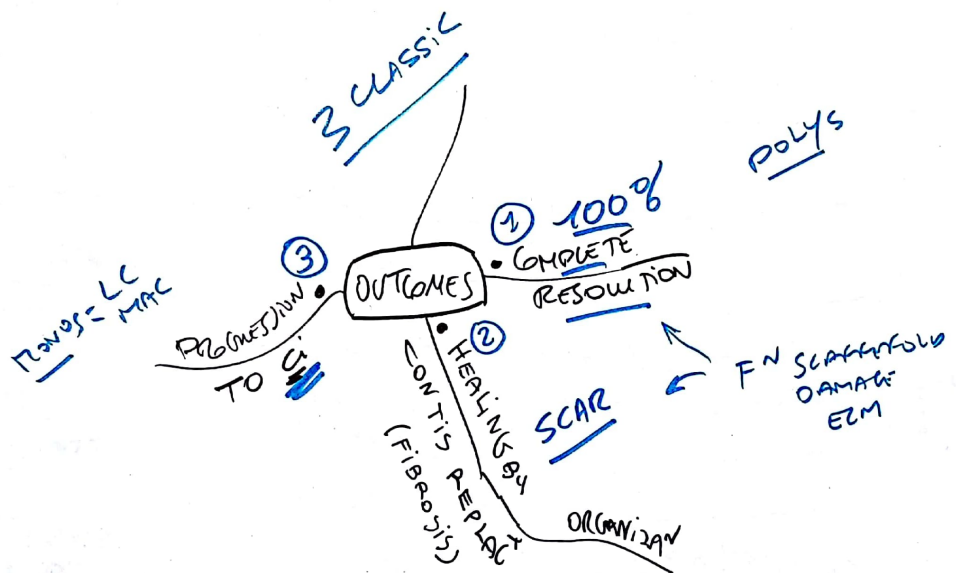


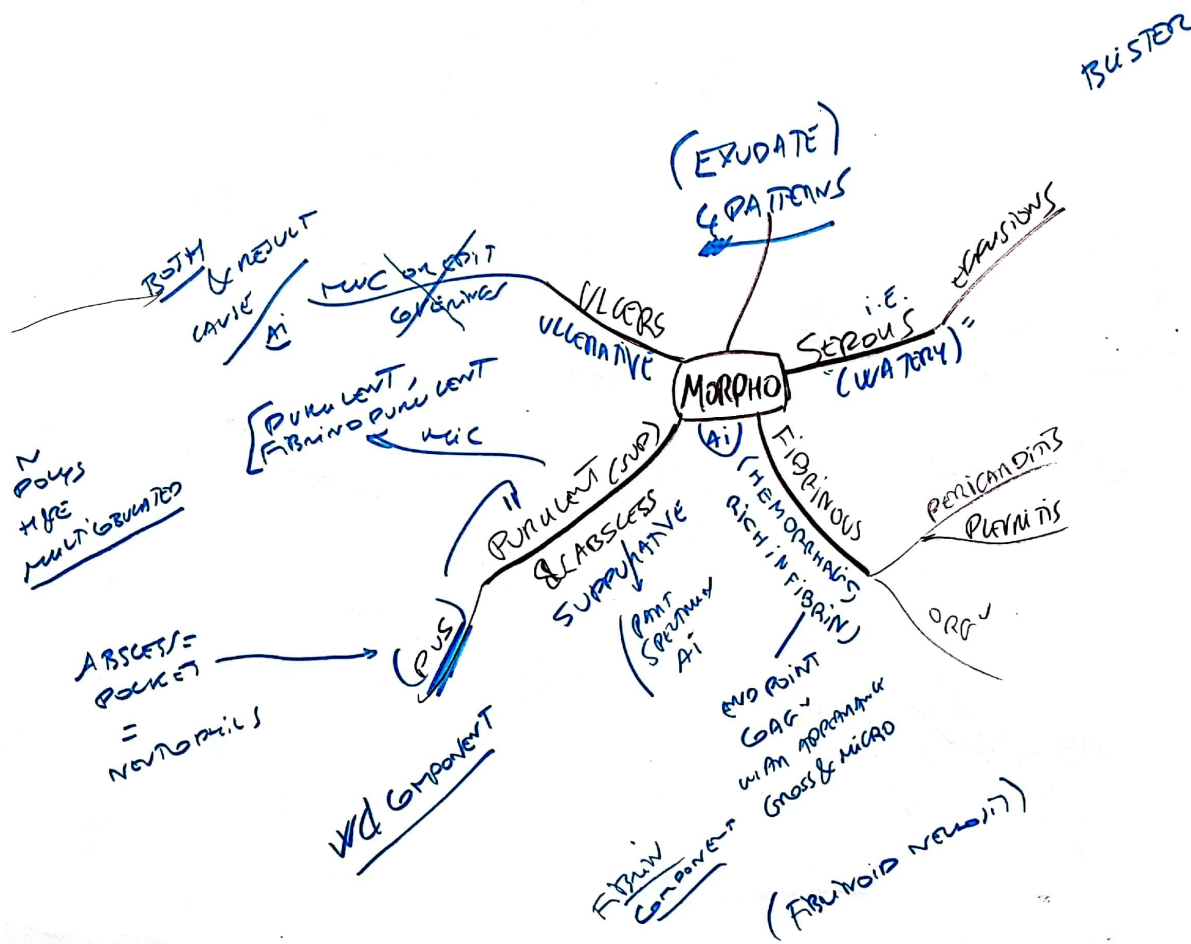




H_2O_2 RATE
 ONE MAN KILLING
 HERE
 TOX → HUMAN CI
 ULTIMATELY AFFECT
 NADPH
 SYSTEM

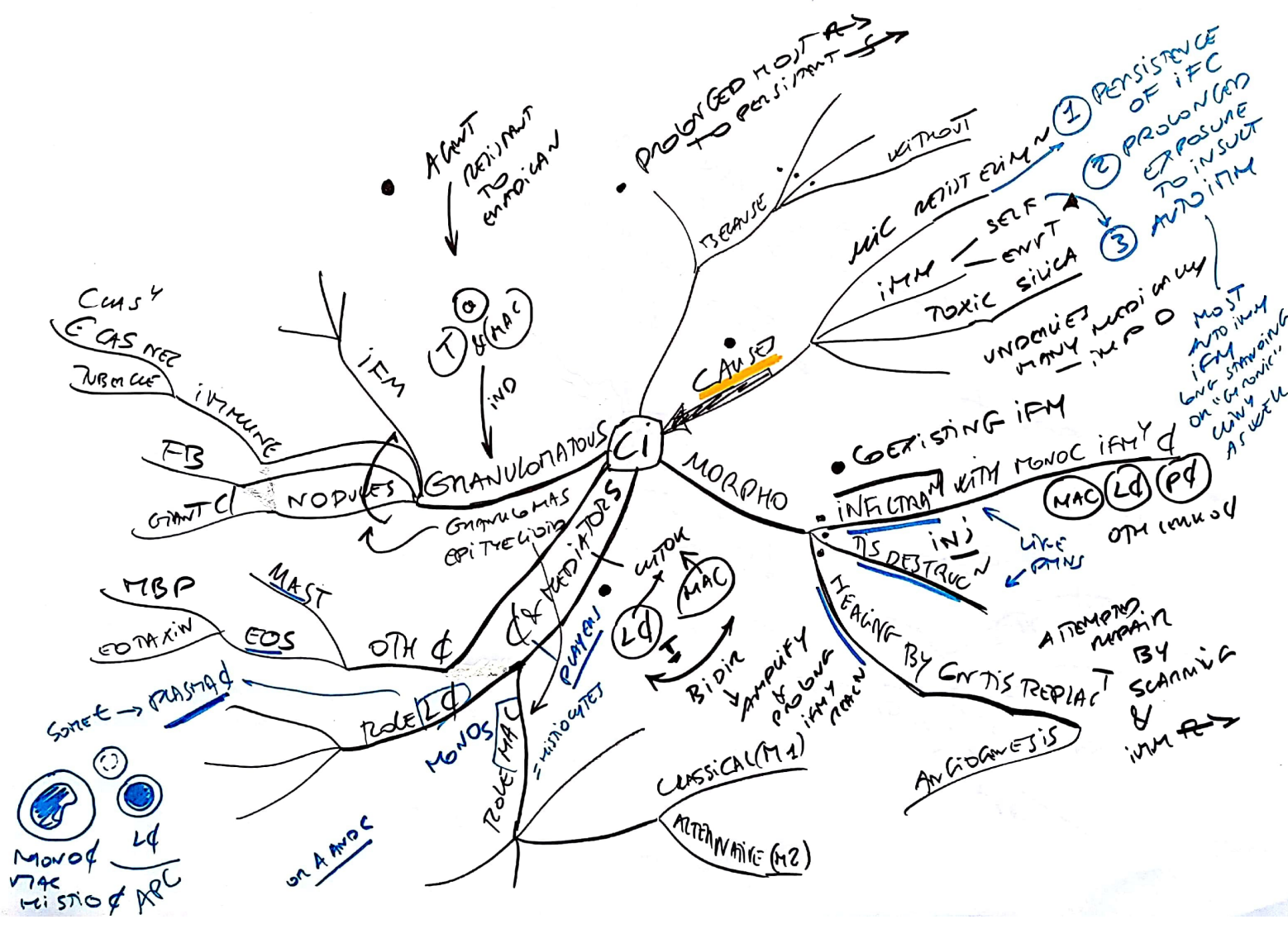


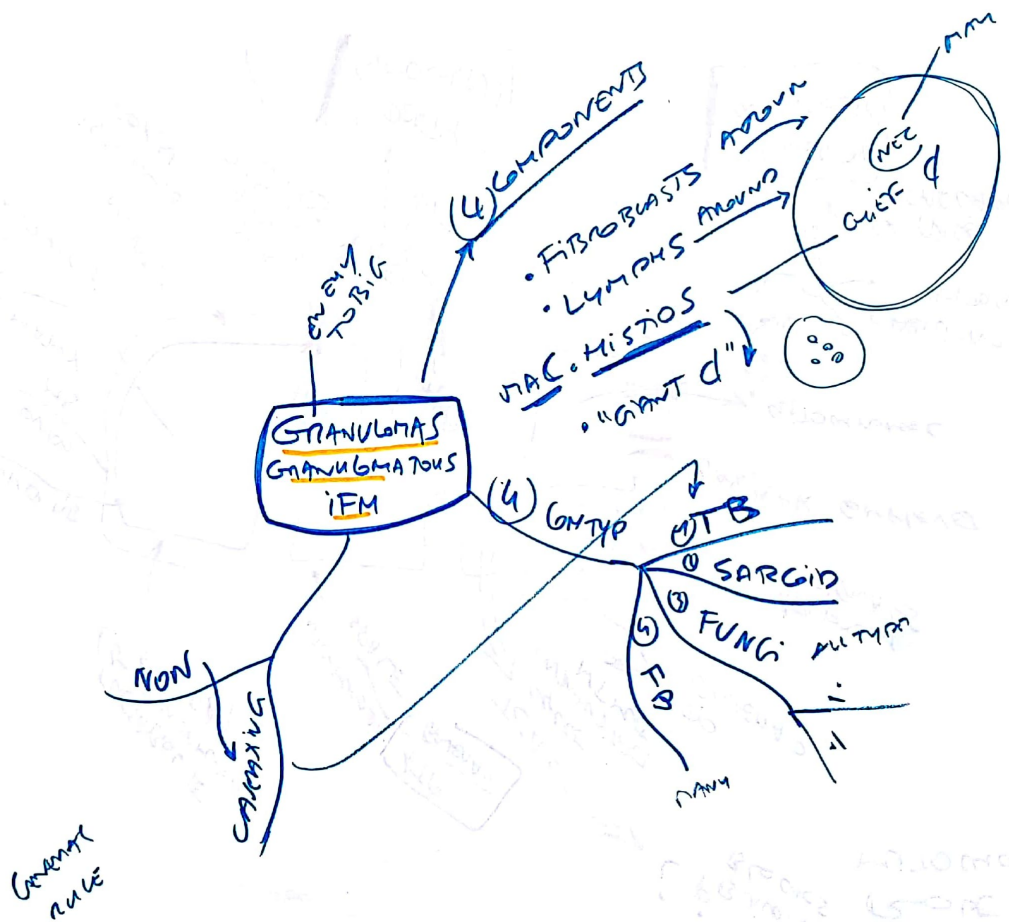


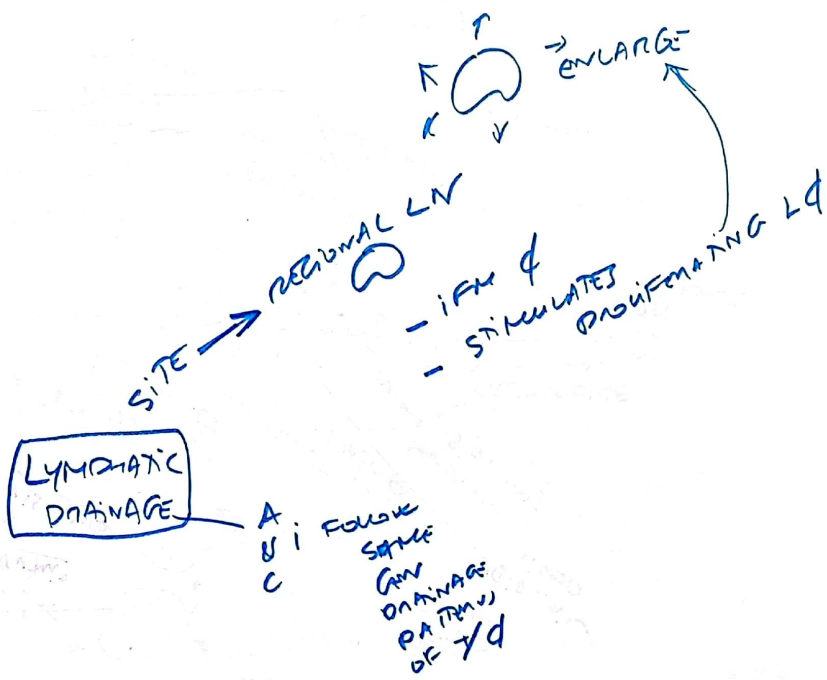


SUMMARY

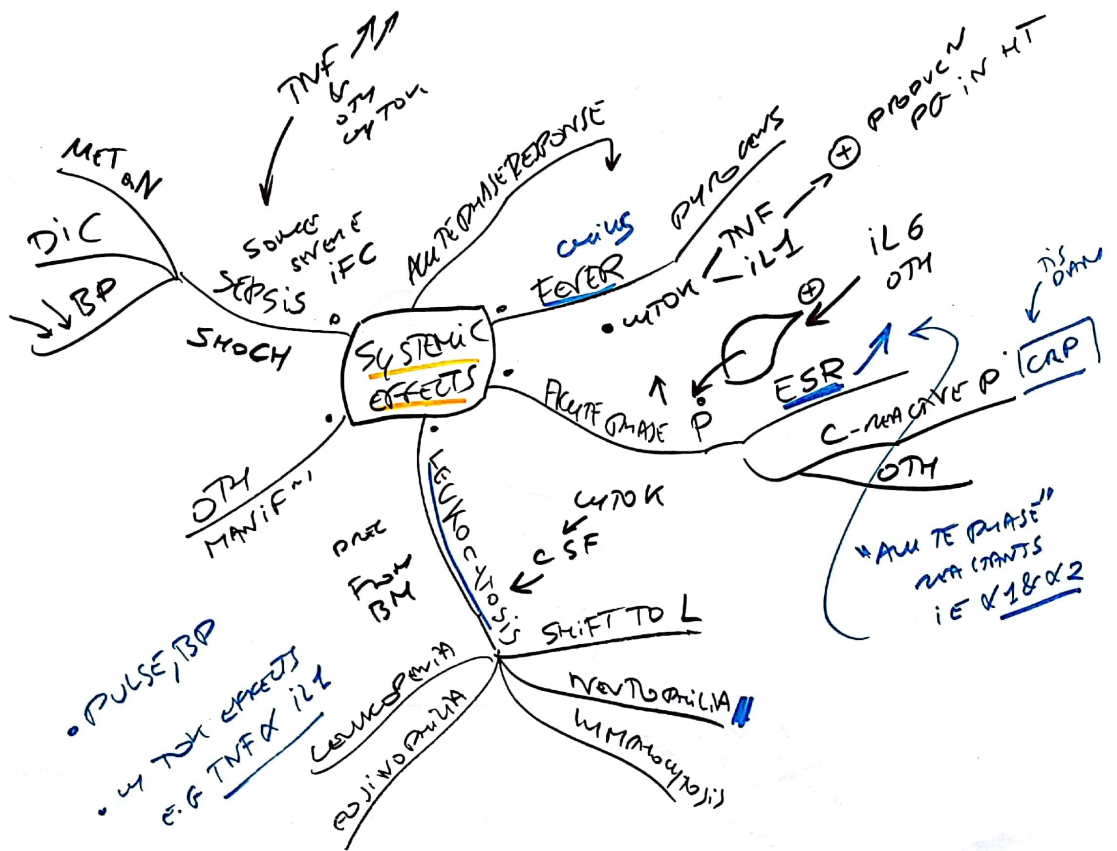
14
going
with

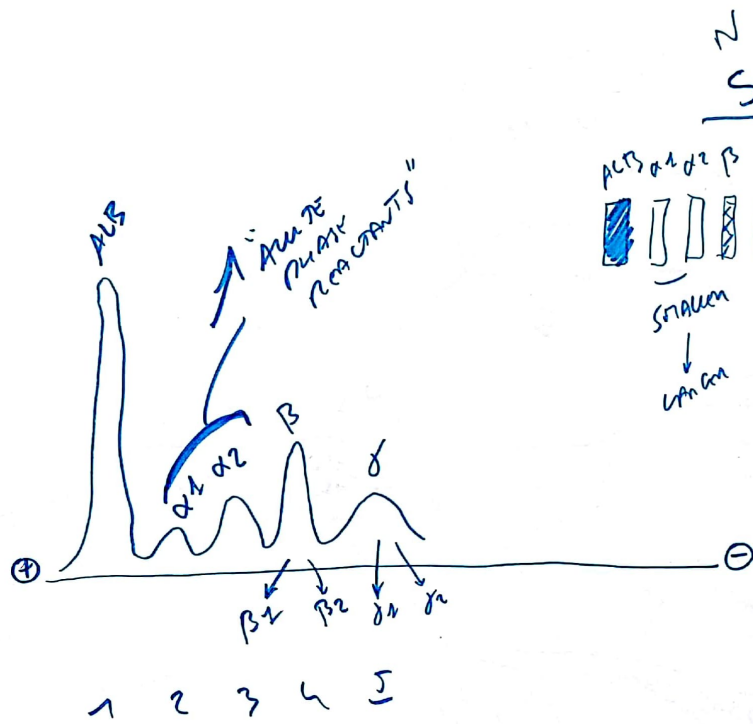




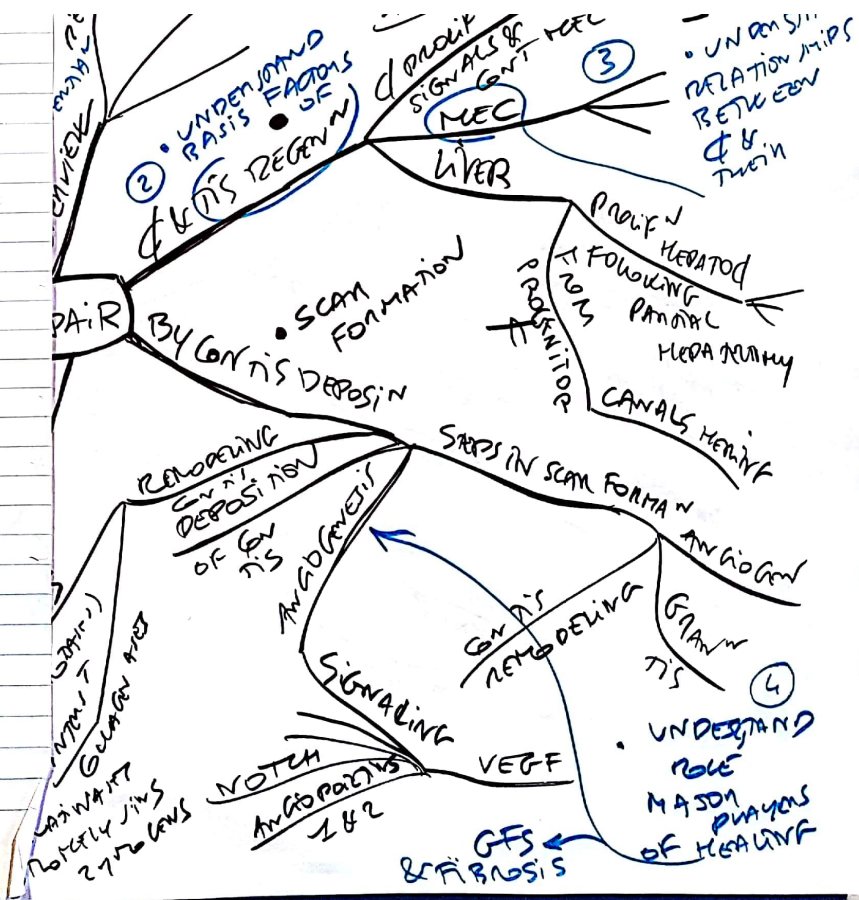


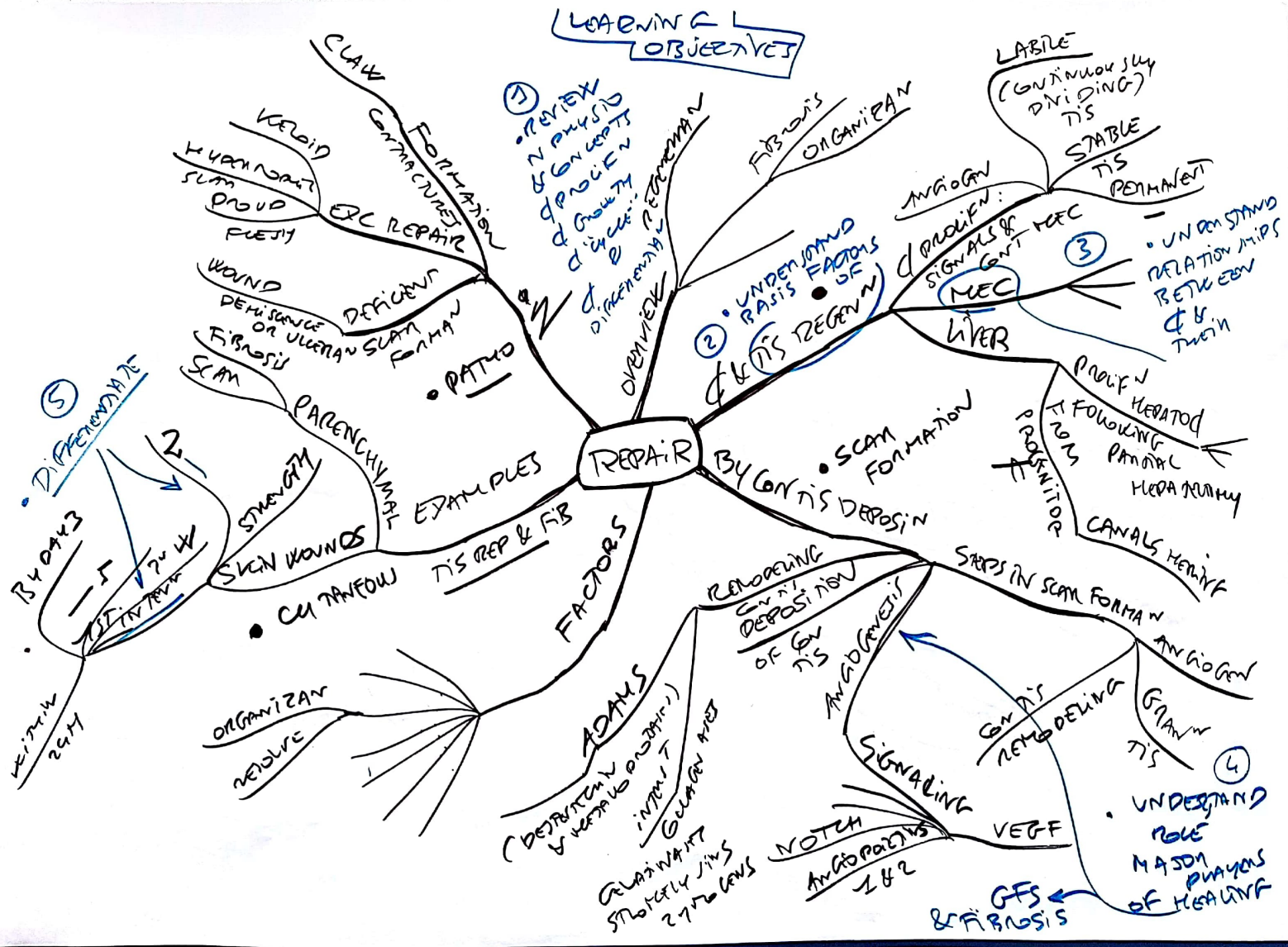
(NON-SPECIFIC)

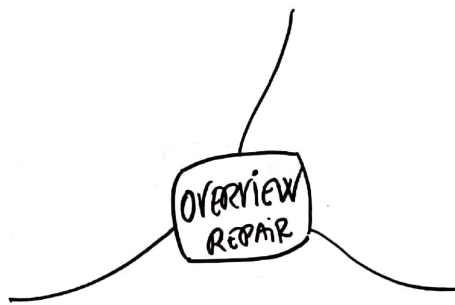


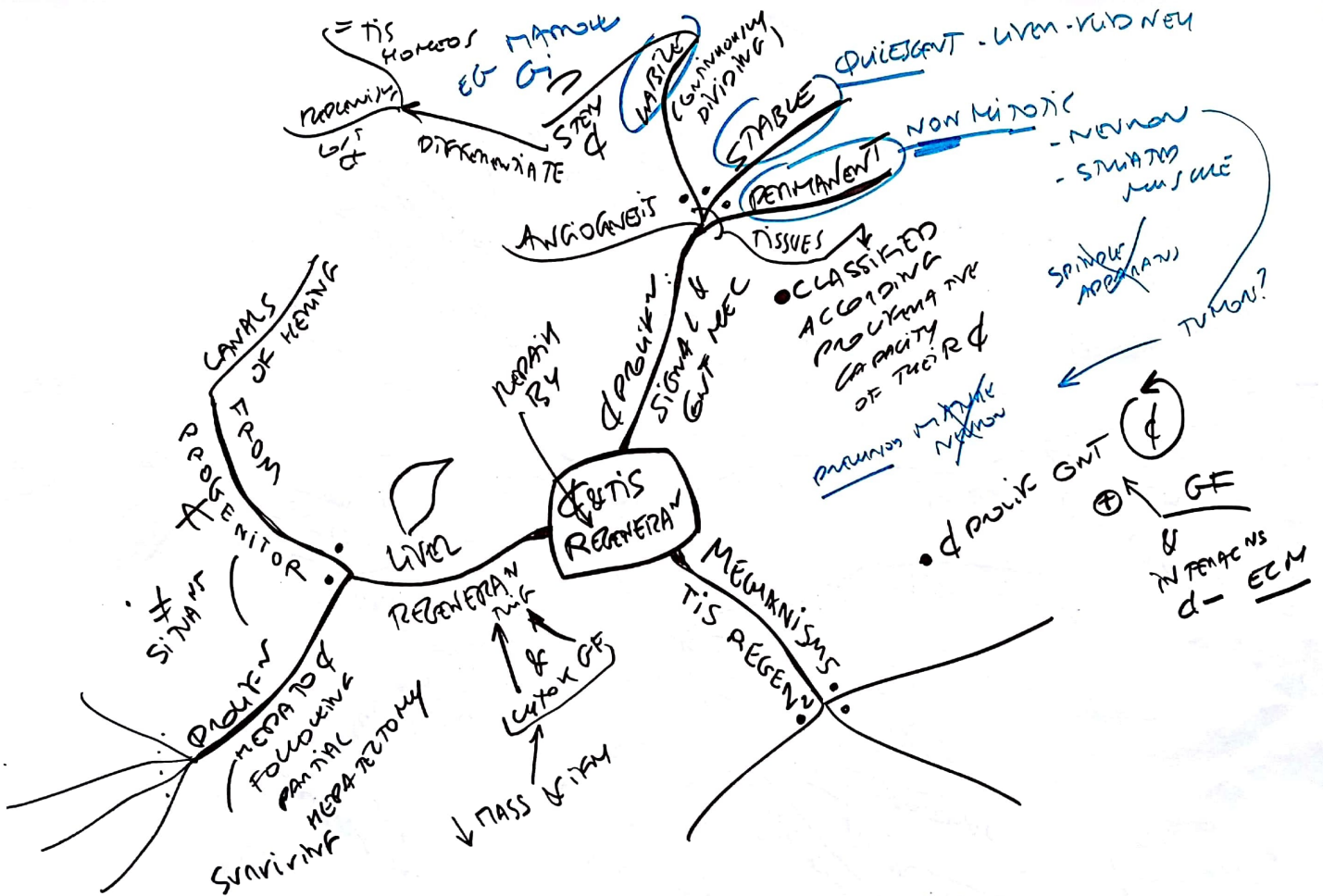


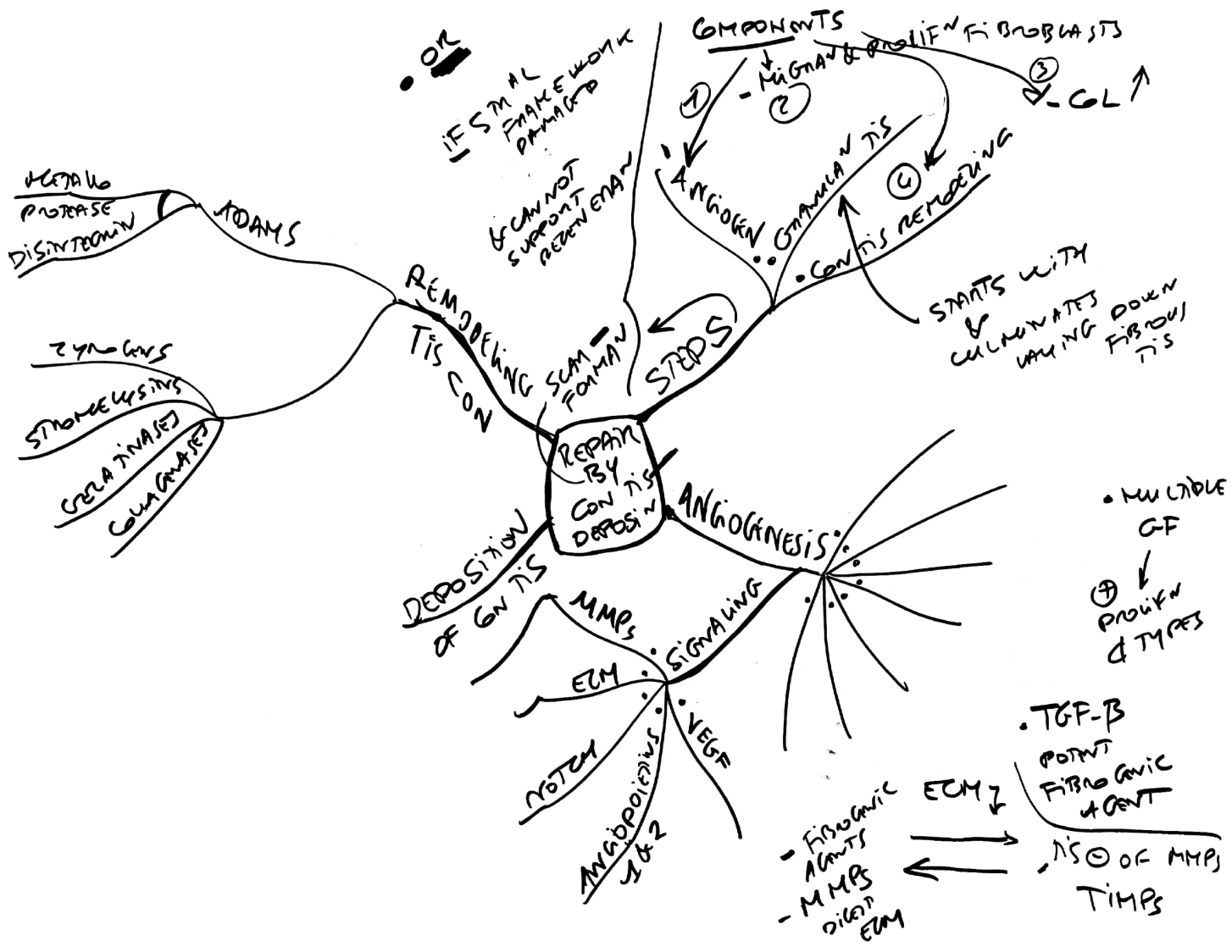
REPAIR

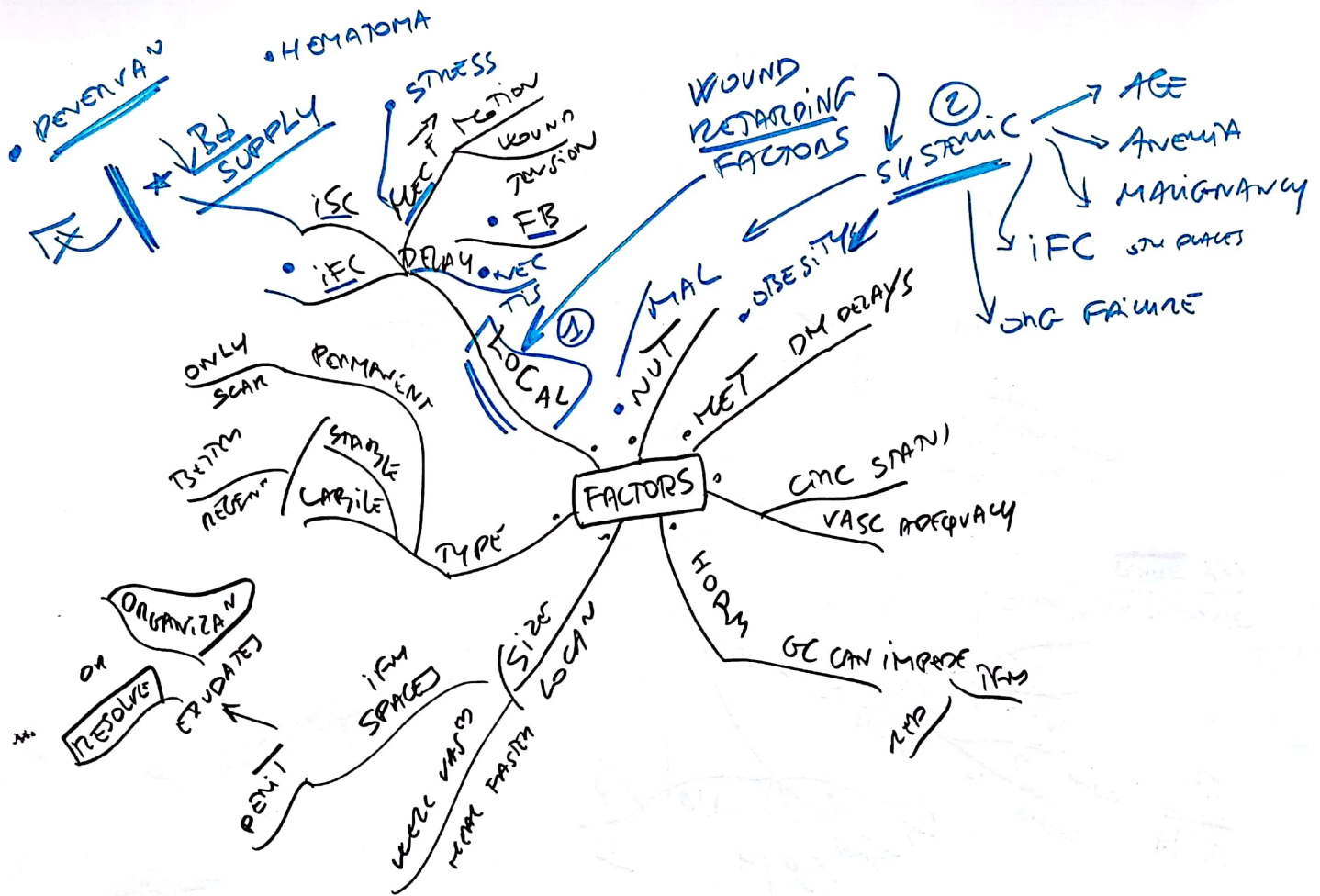


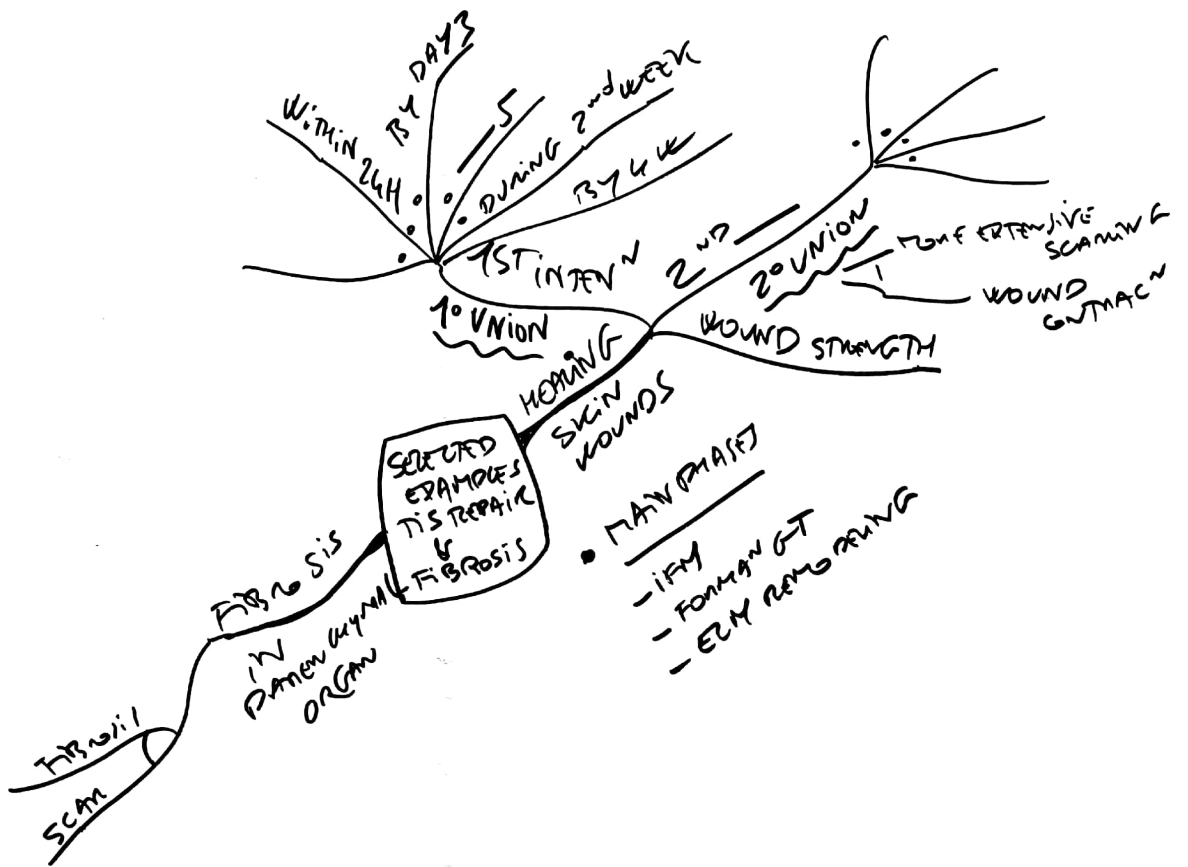


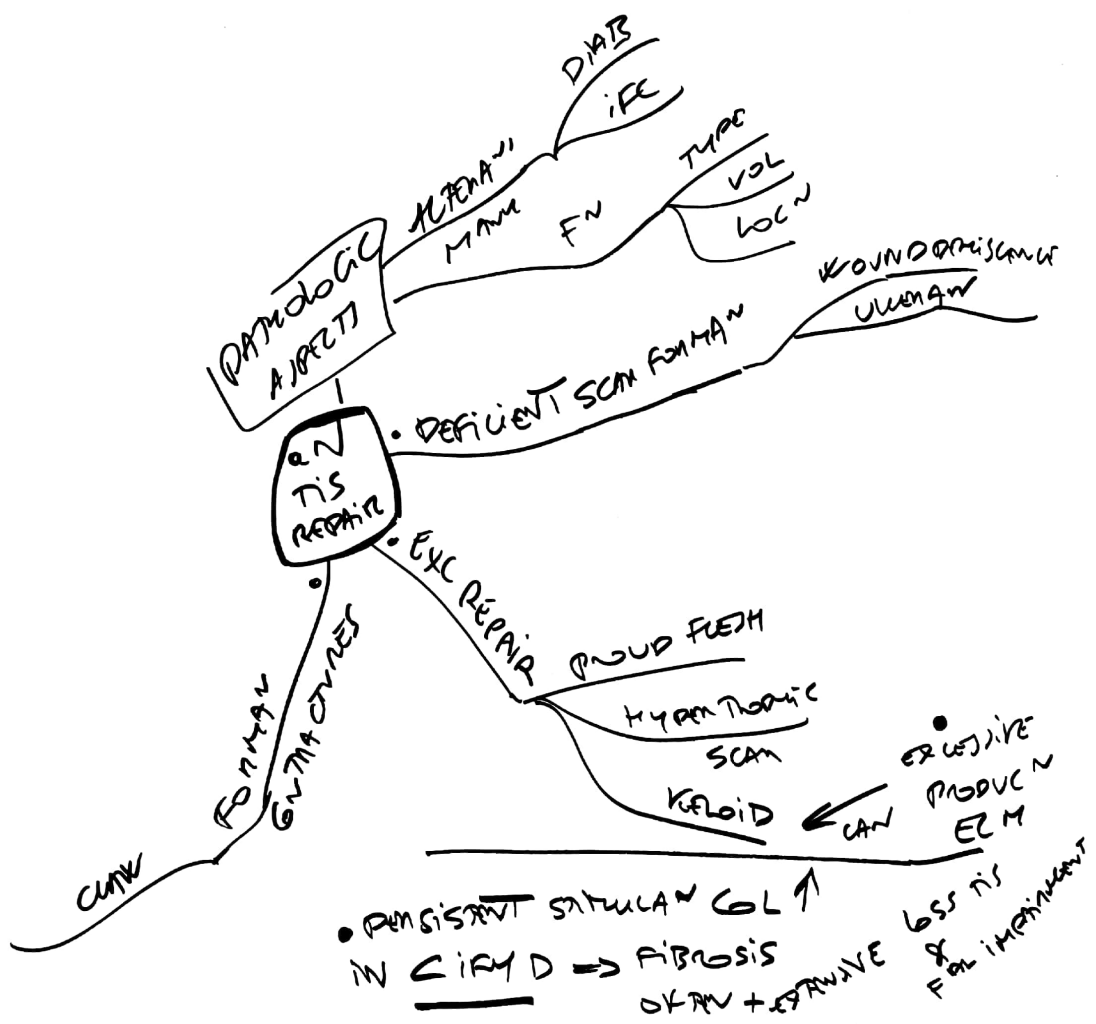


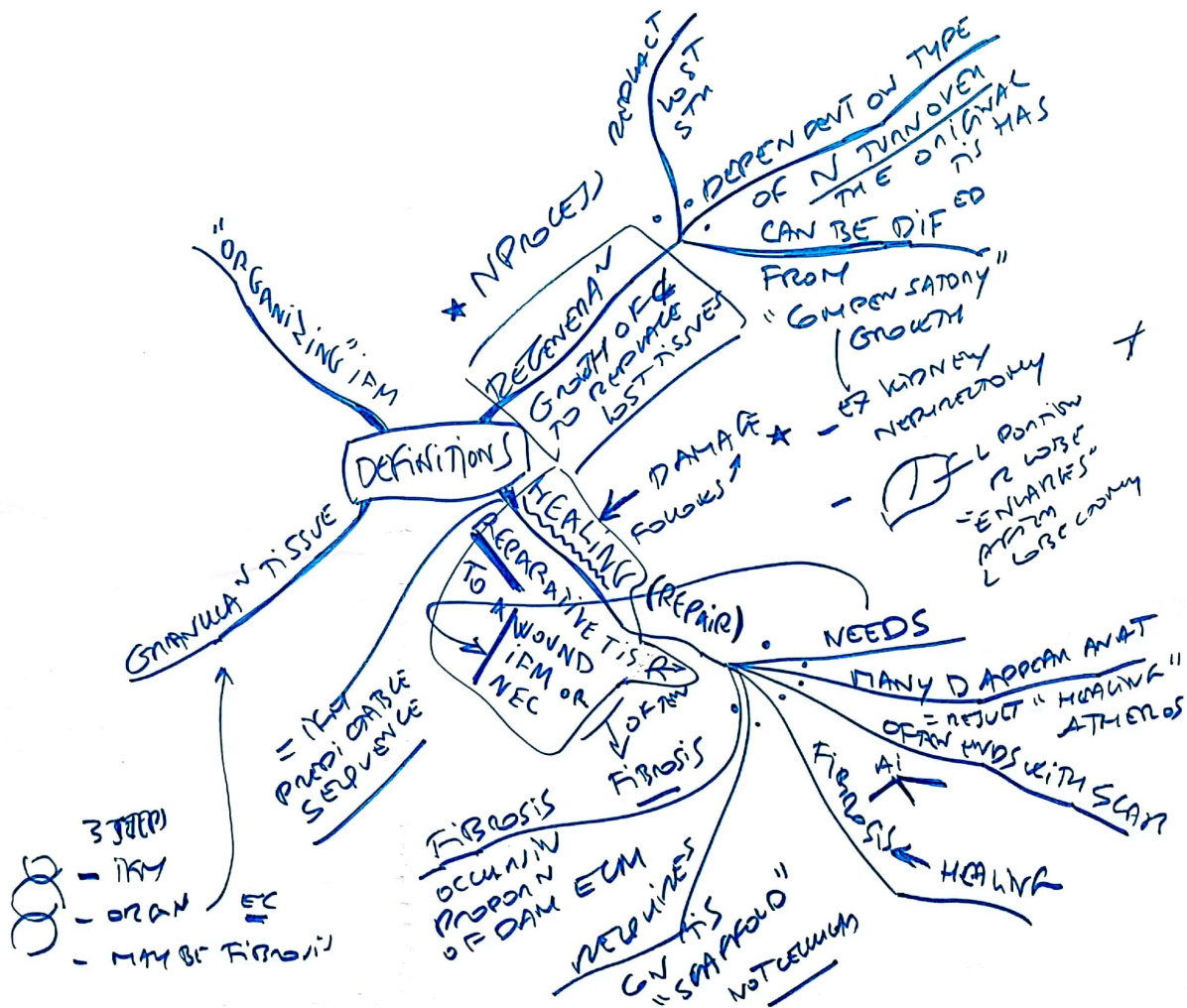


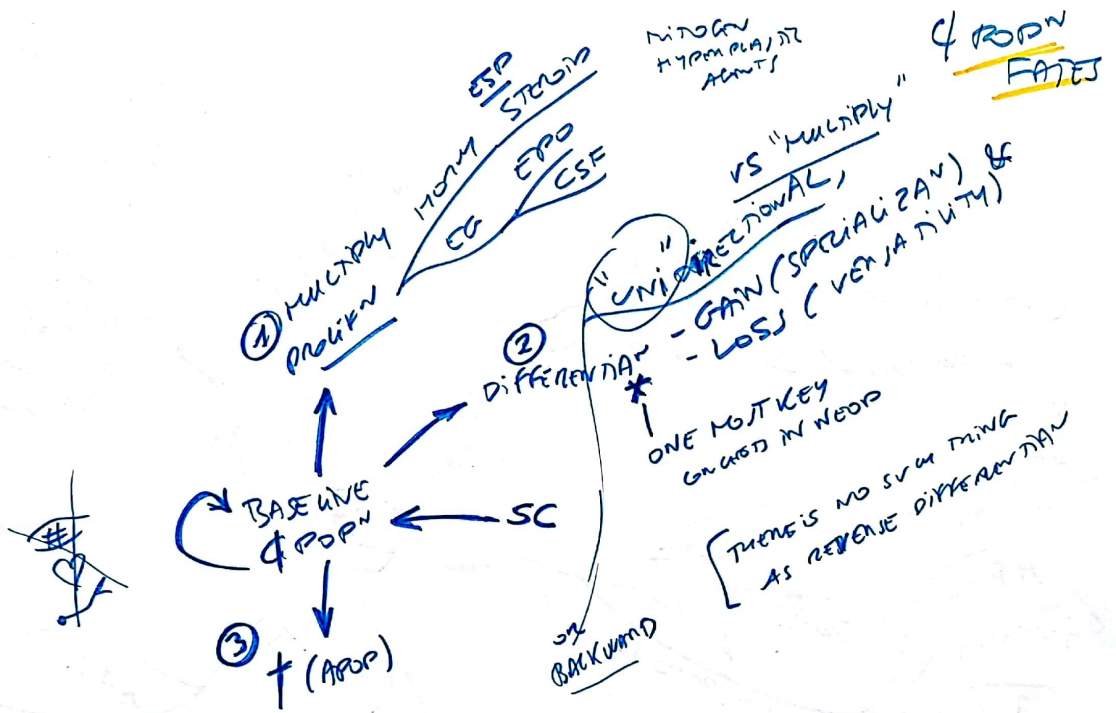


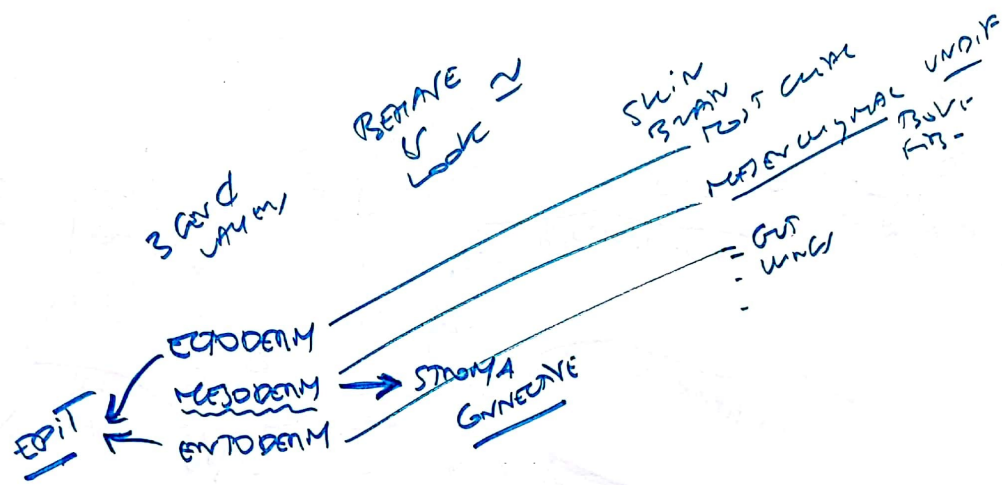




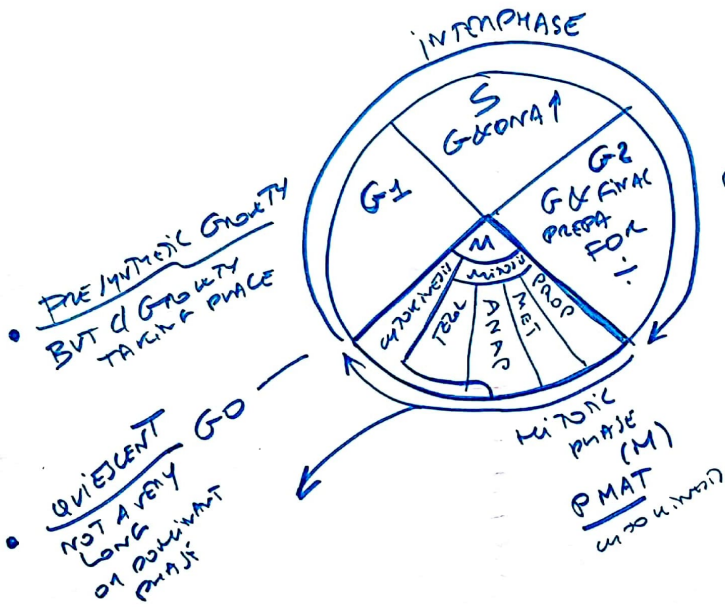


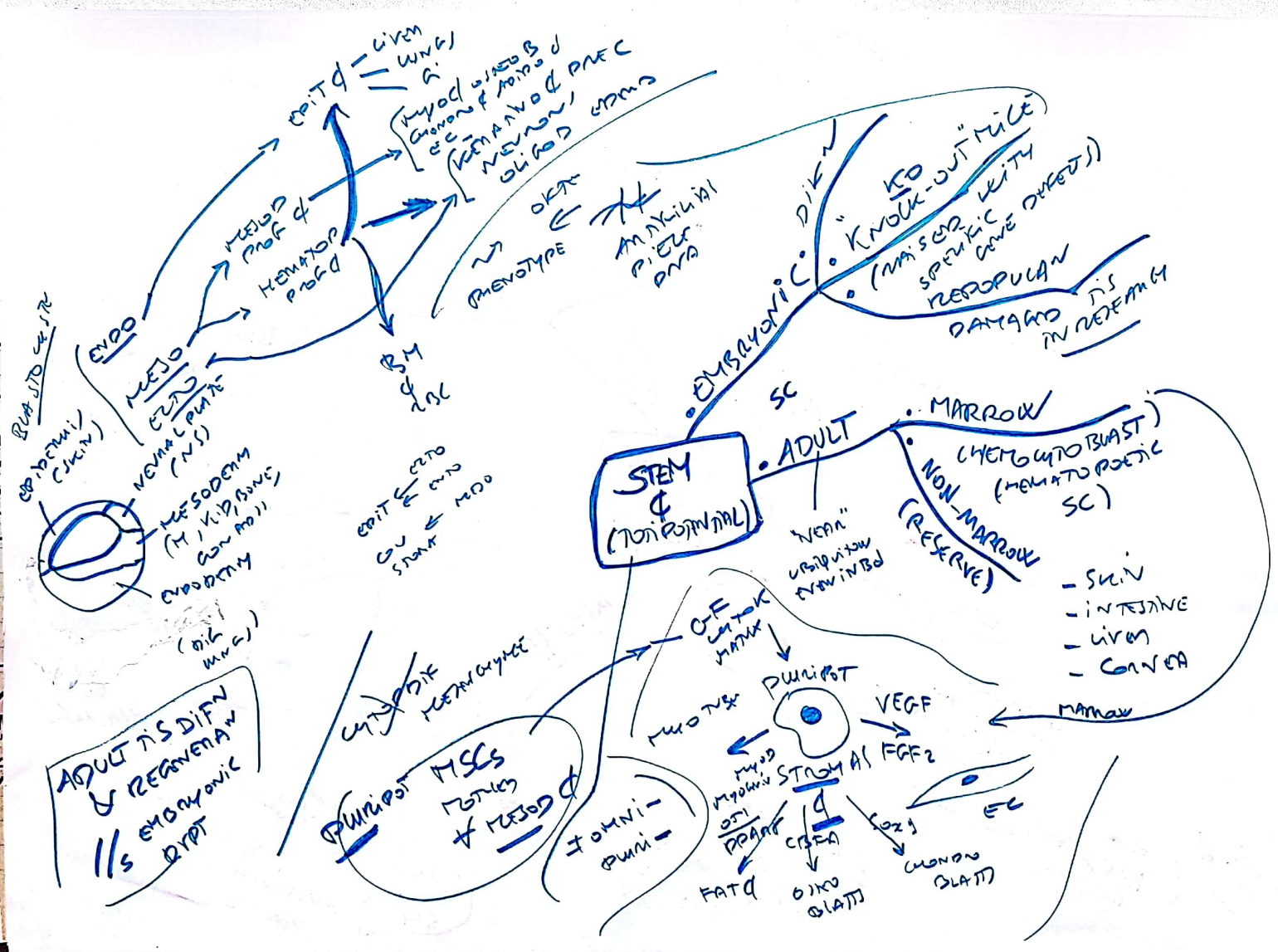






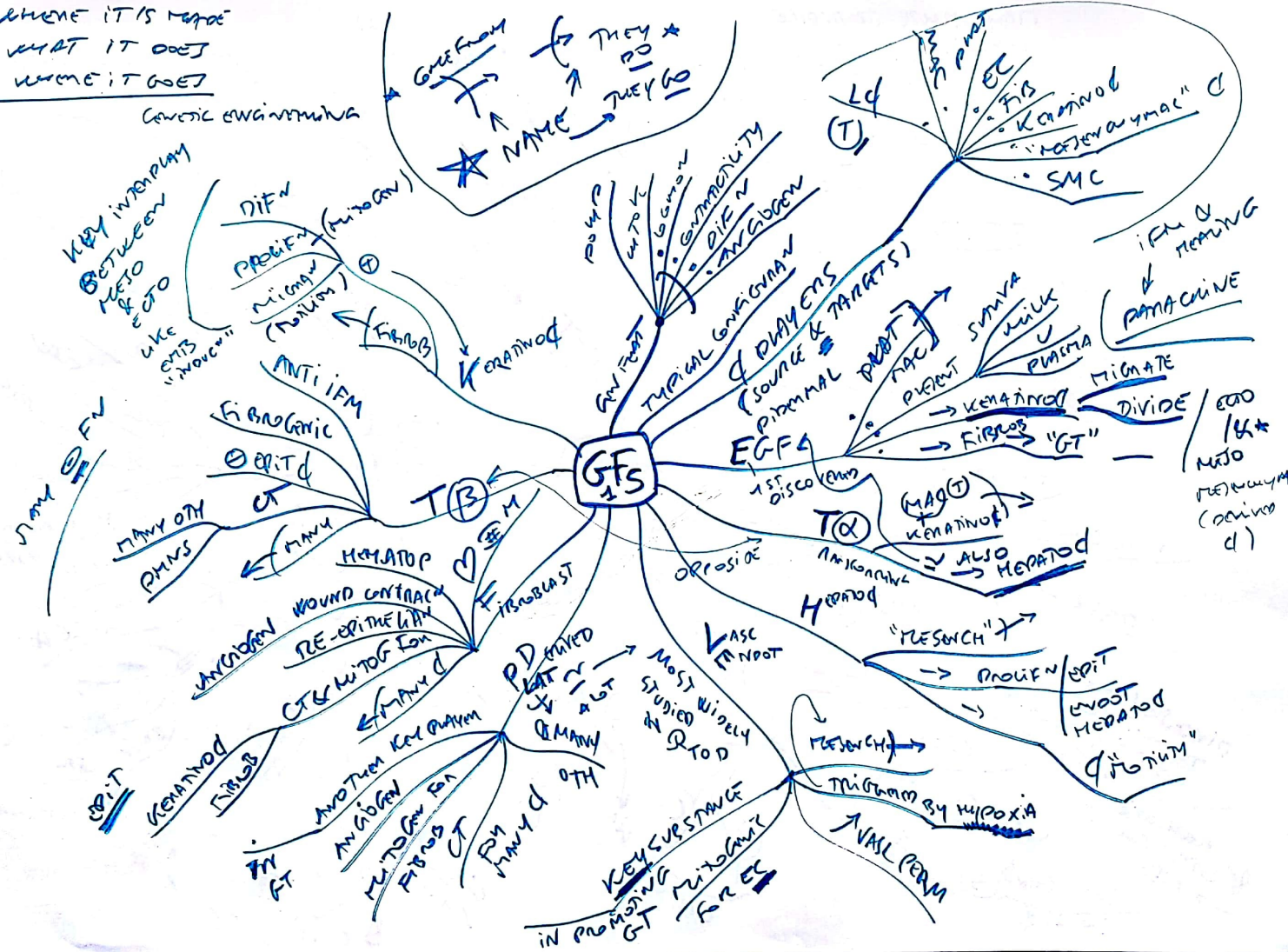
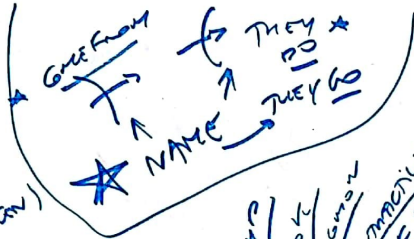
• DNA SYNTHESIS
 WHICH HAVE G1T "TUMOR" HAVE G1 G2 OR LONG S = DNA ↑
 S PHASE CAN BE PROLONGED

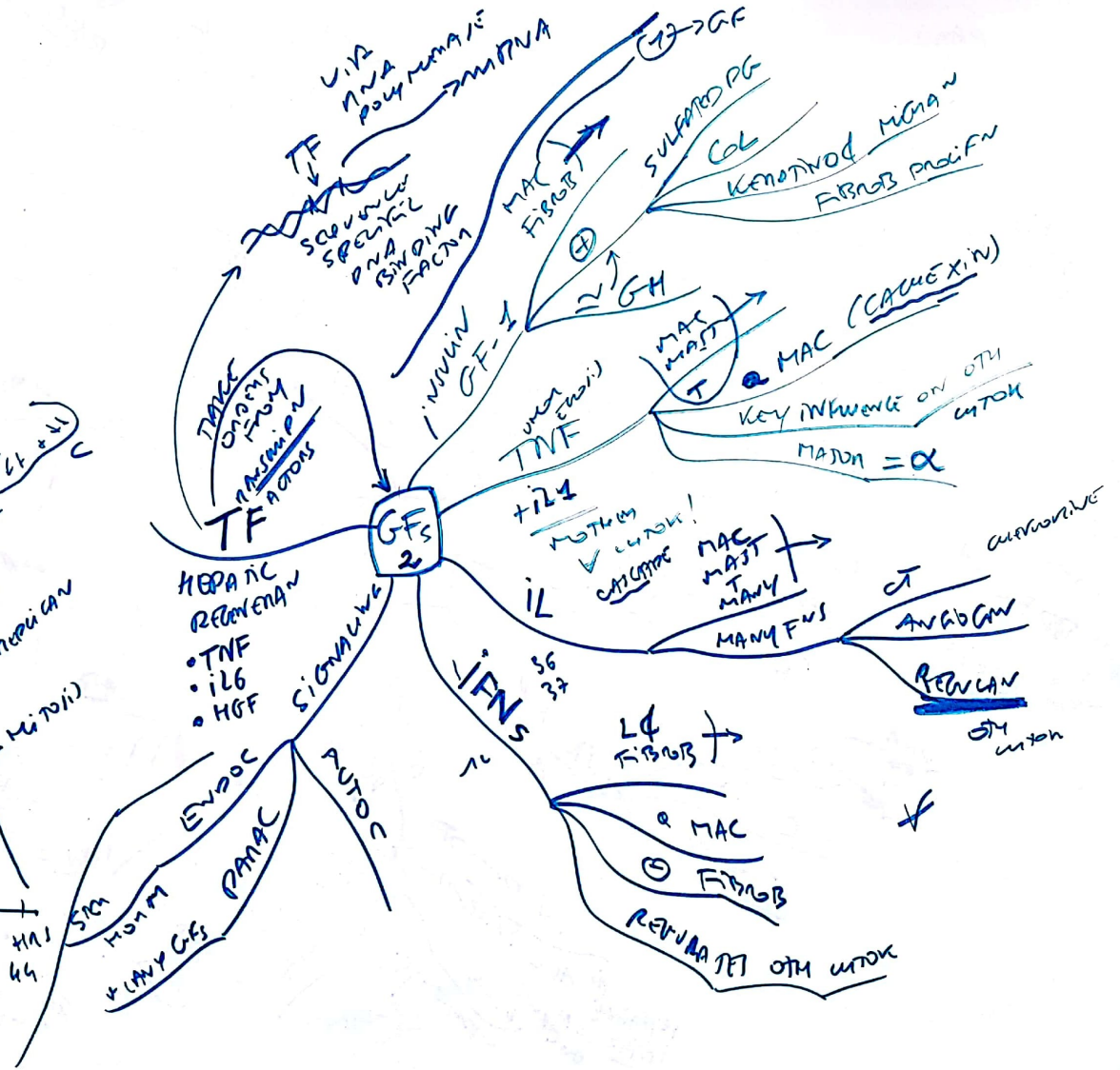
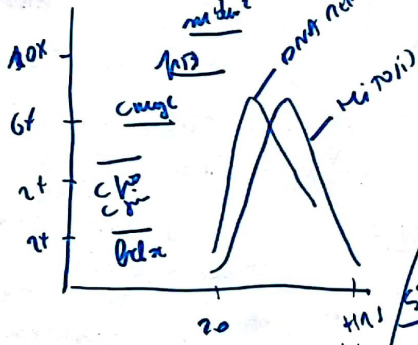


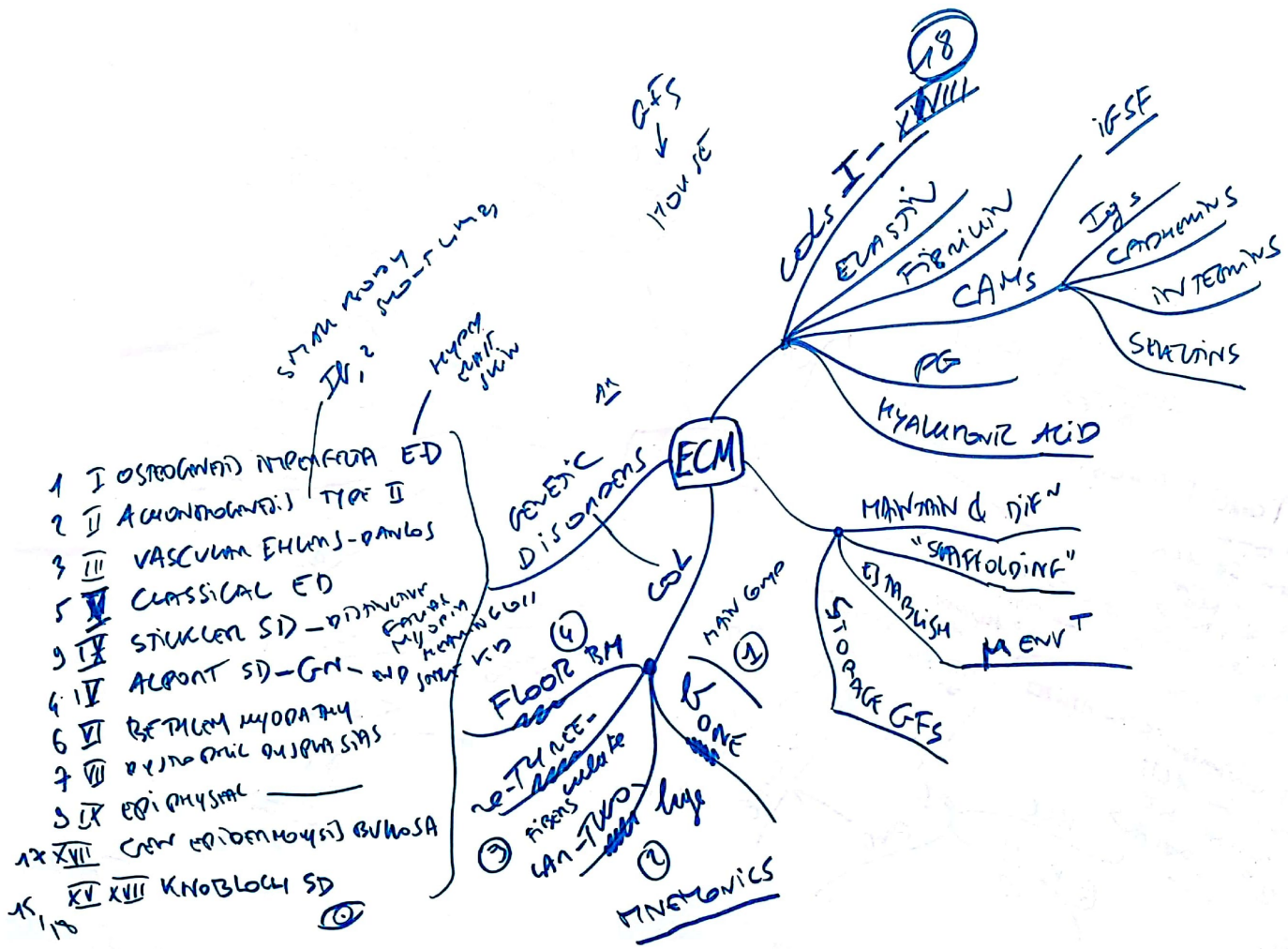


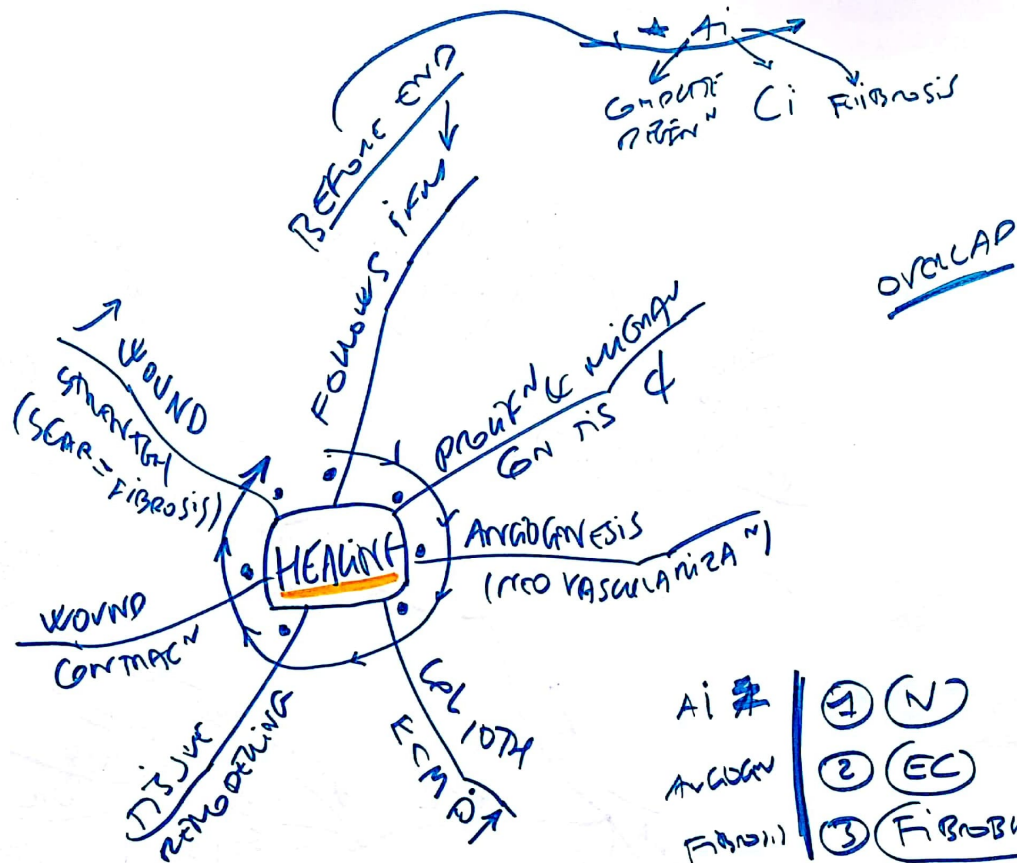
- WHERE IT IS MADE
- WHAT IT DOES
- WHERE IT GOES

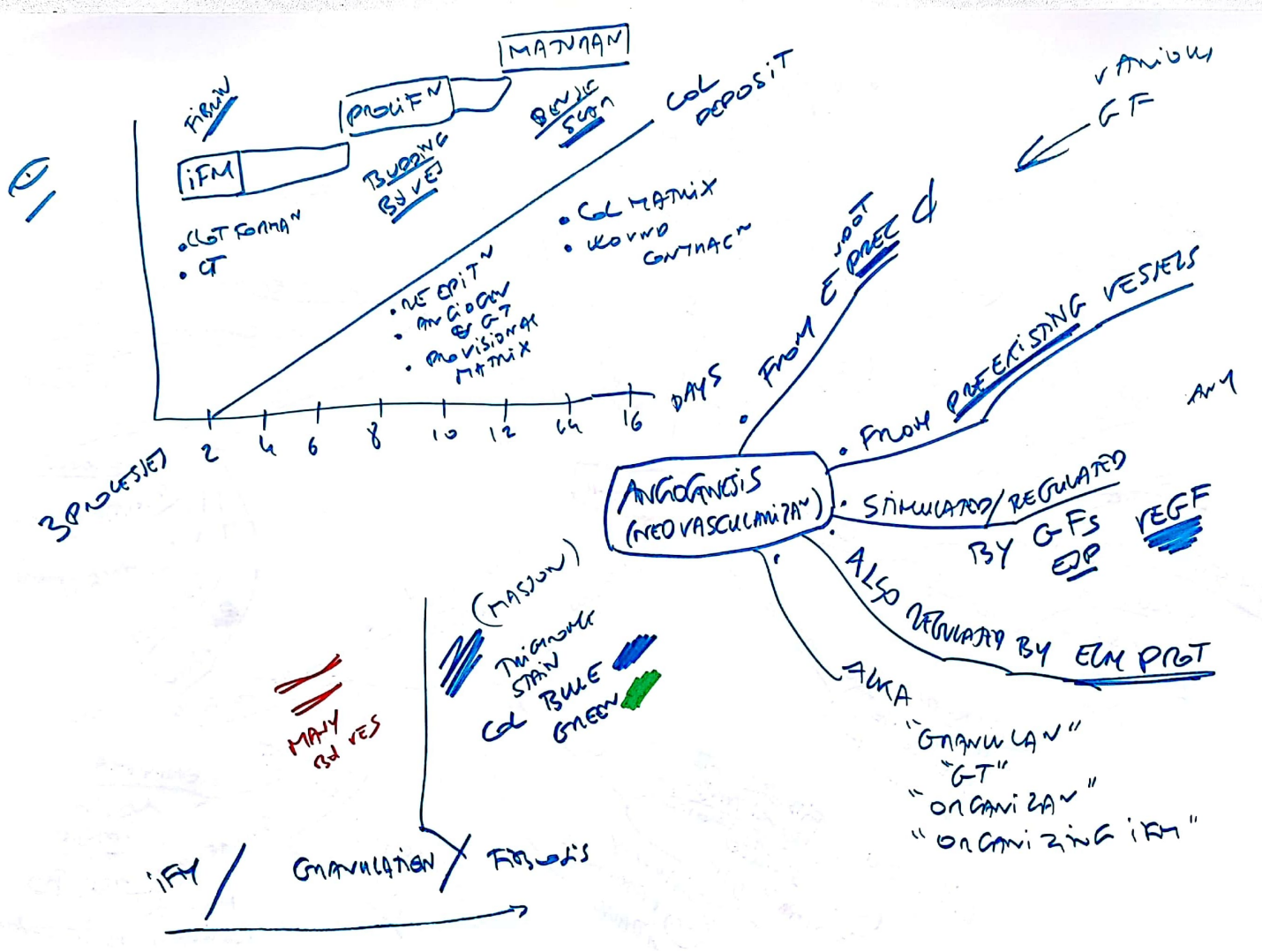
GENETIC ENGINEERING

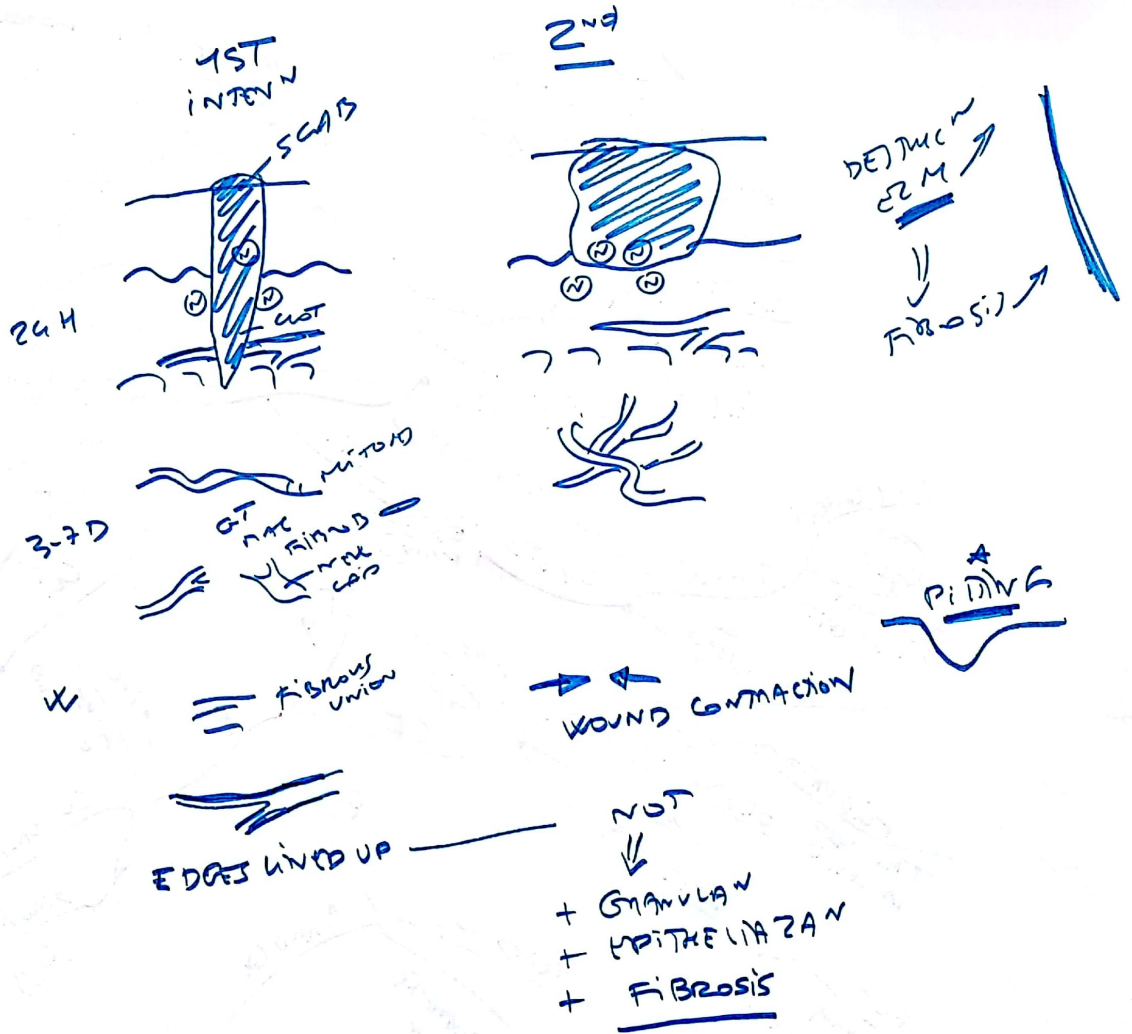




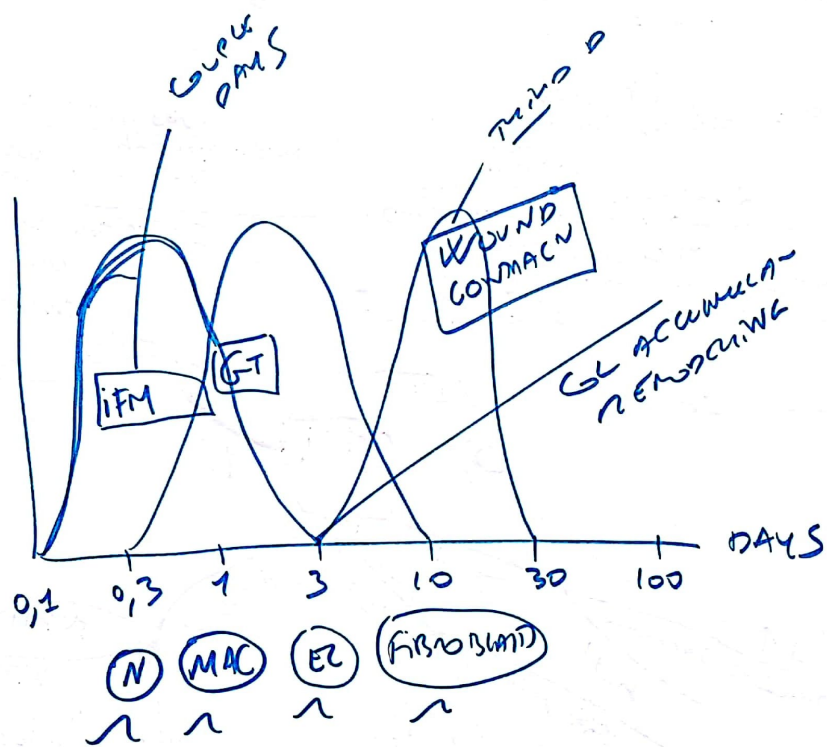


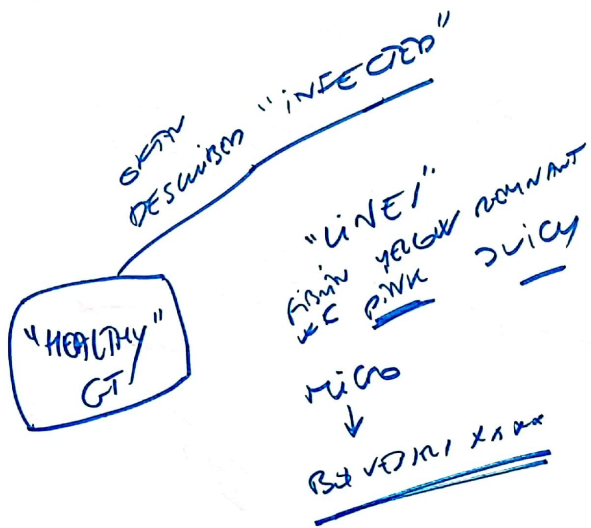






OVERLAP





DEPOSITION COL
BY FIBROBLASTS

FIBROBLAST SCARRING

WITH E COL 4?

COL BECOMES
MORE DENSE
⇒ IS "STRAW COL"

BOUND GUMMAGE
LEADS?