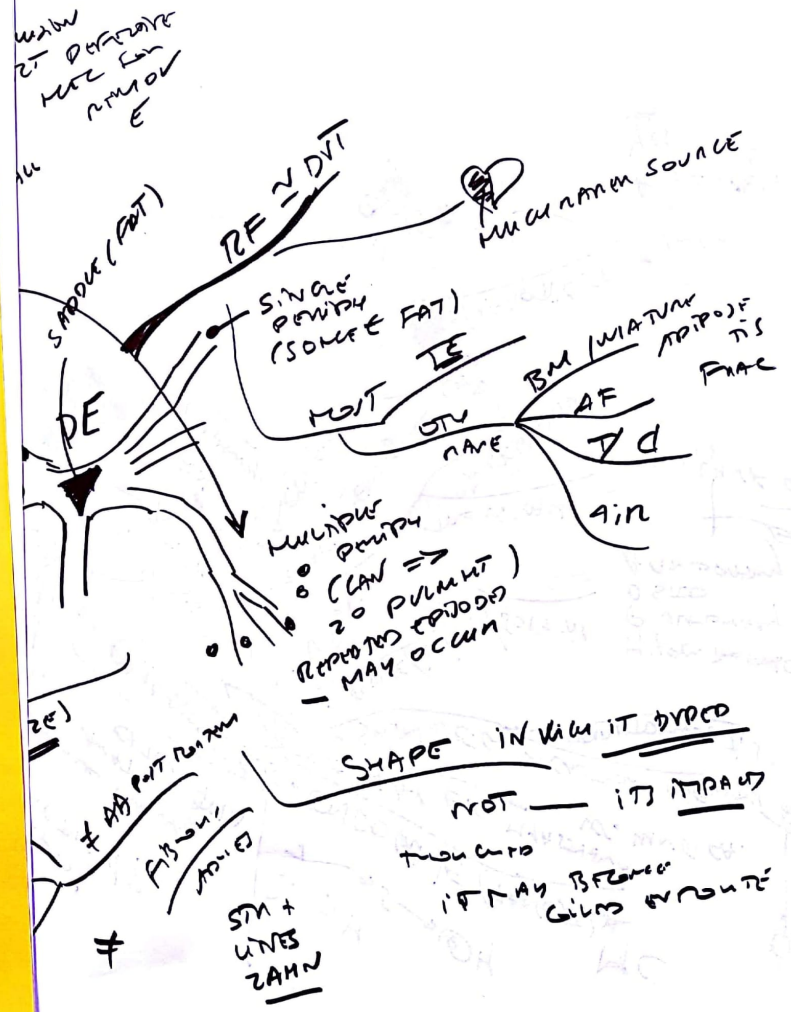
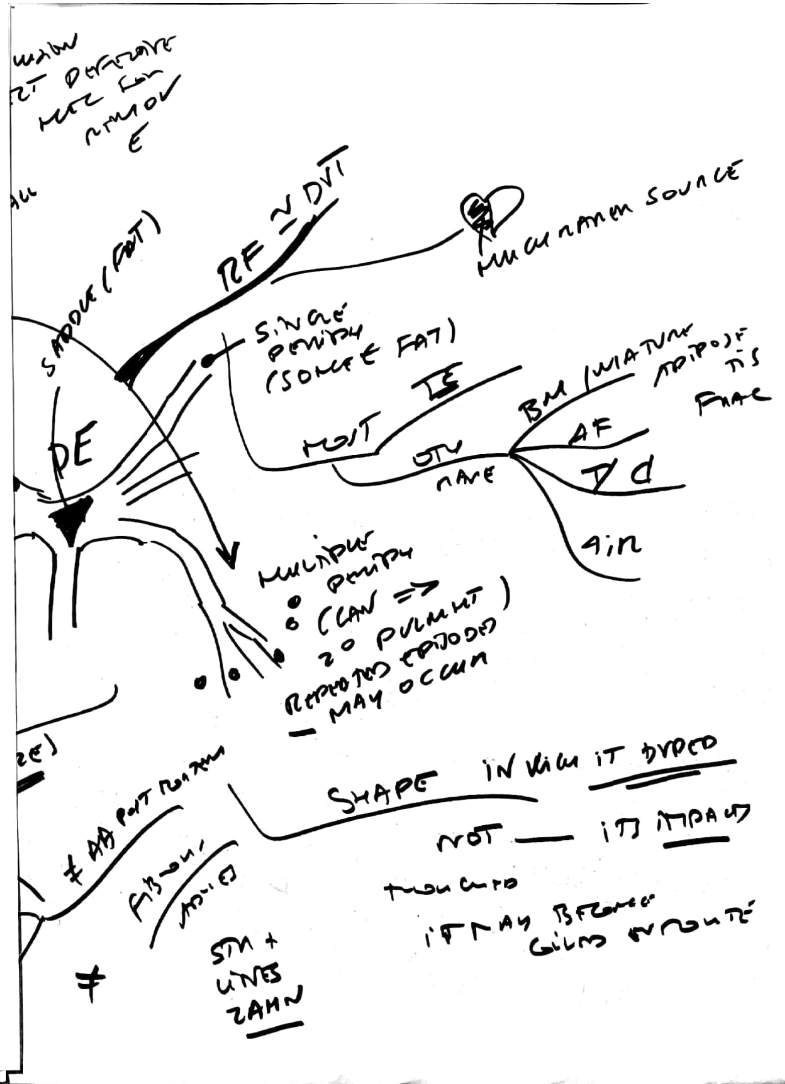
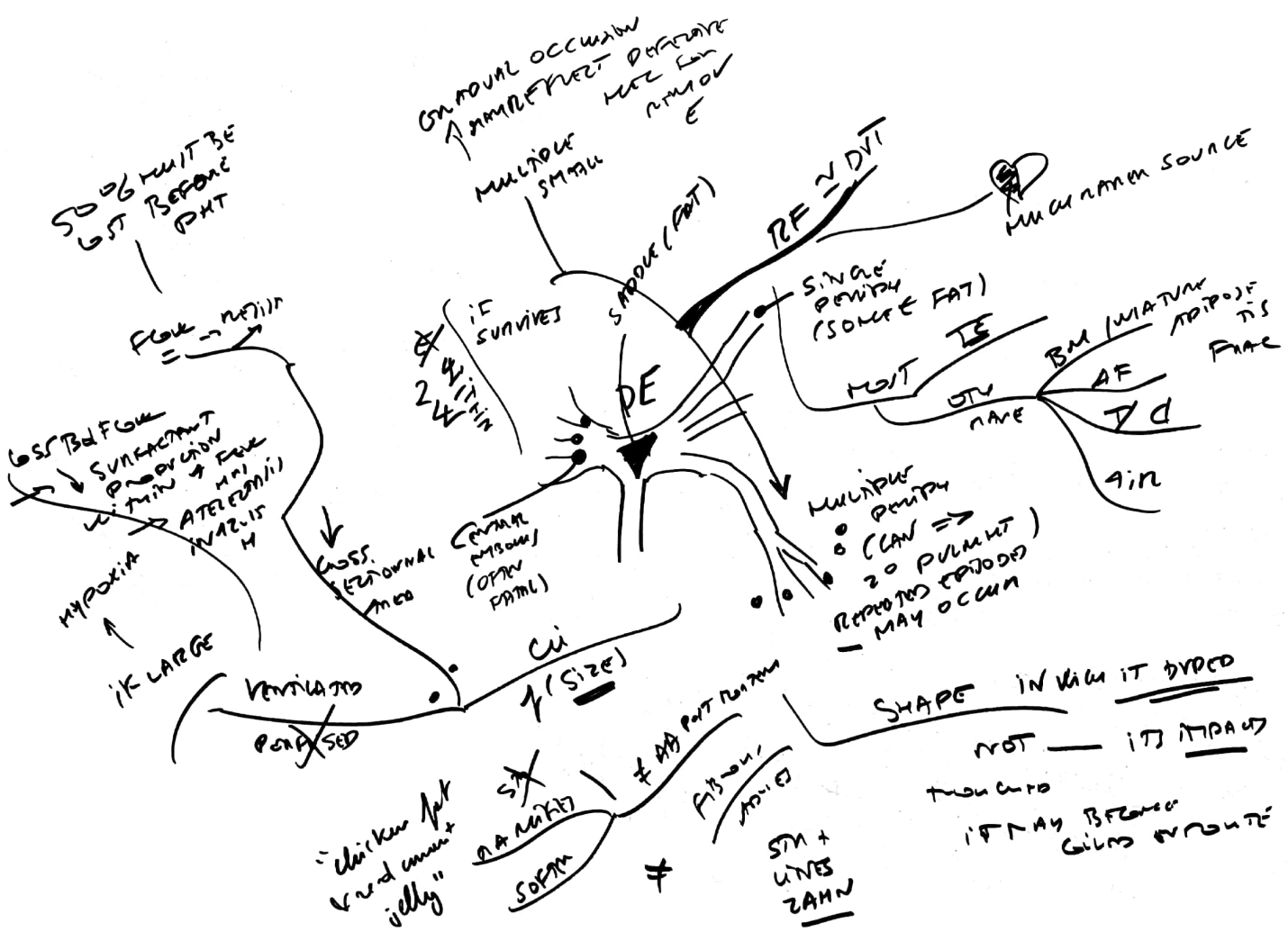


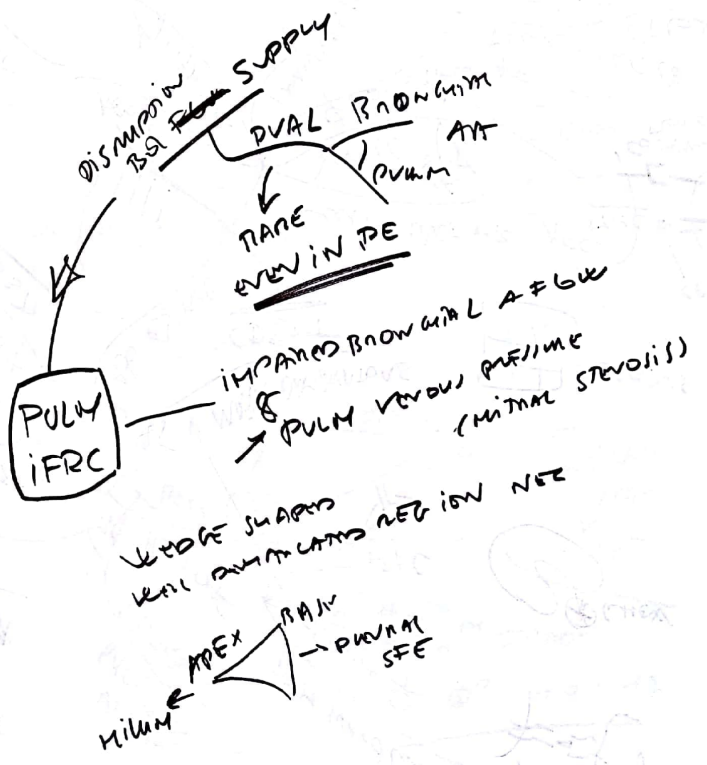
RESPIRATORIO

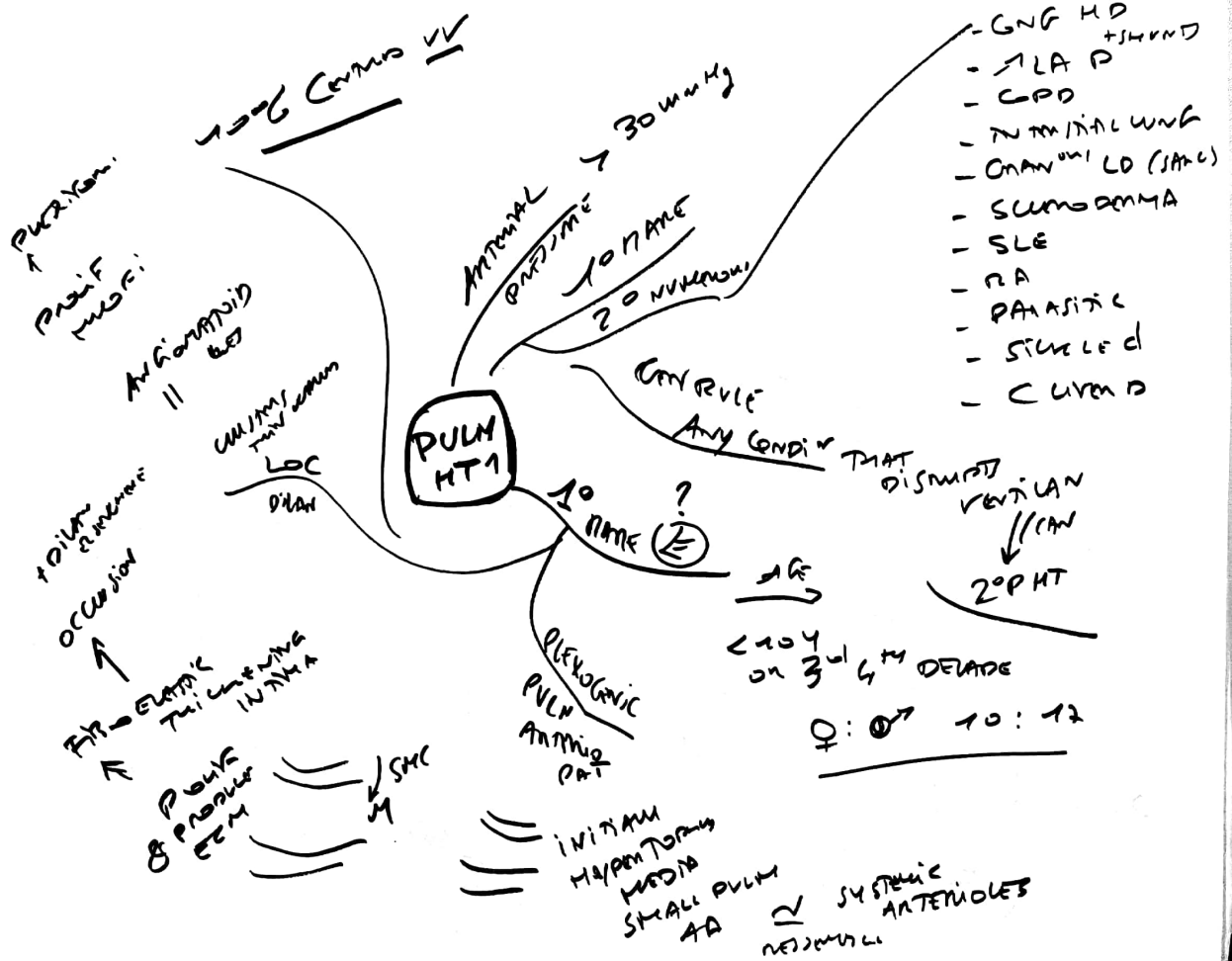


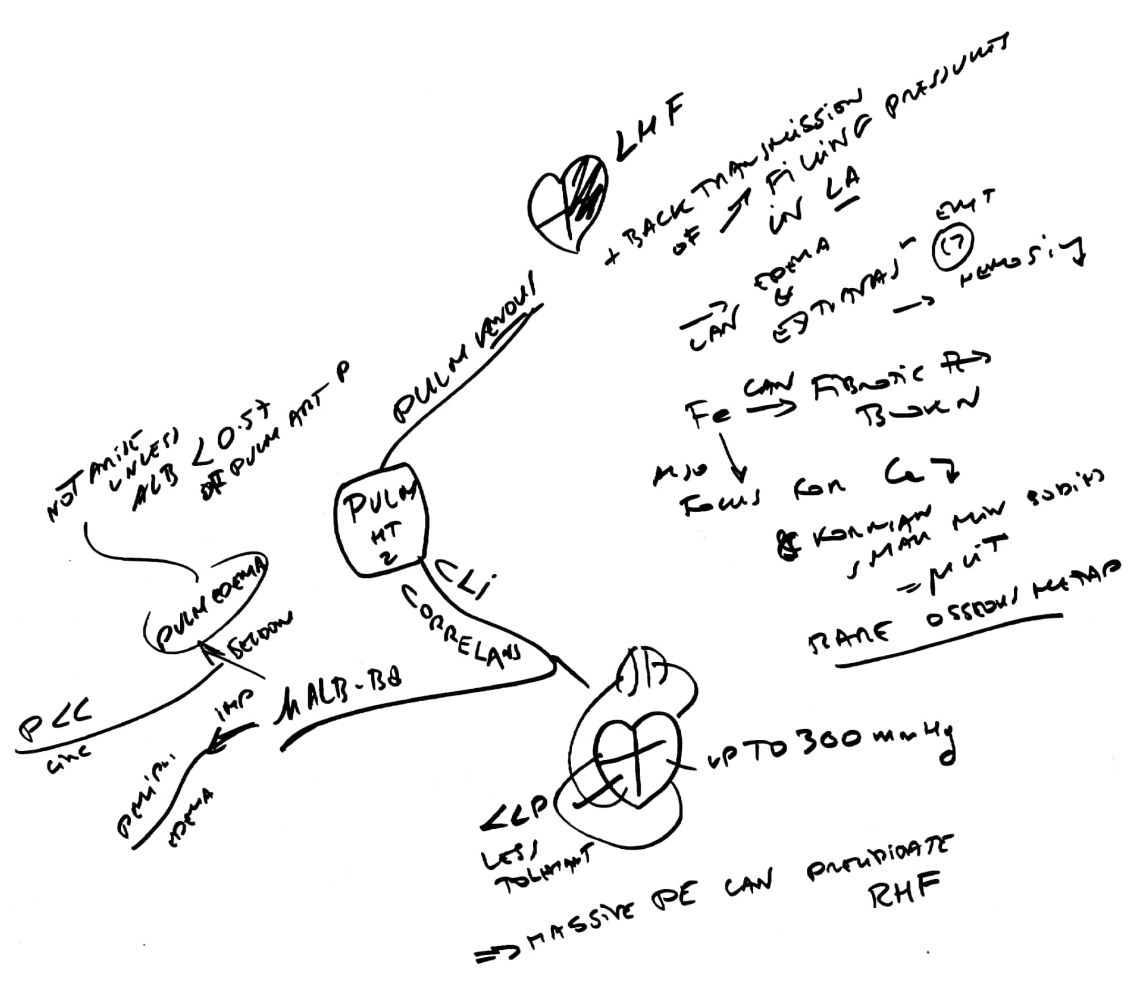


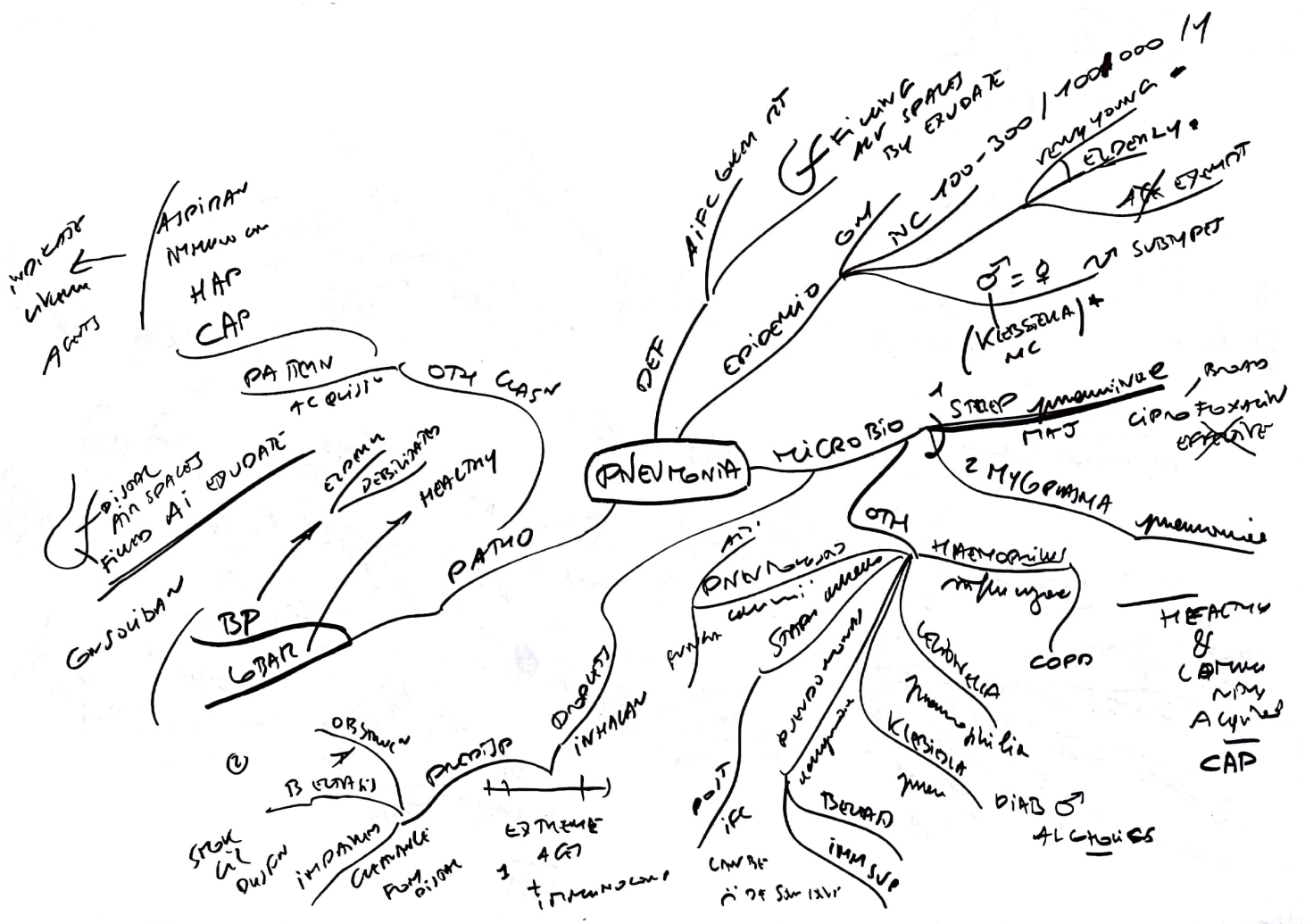
VASCULAR











FIT & HEALTHY

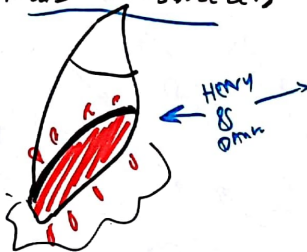
ONE LOBE LUNG

ACUTE GINGESTION

①

D1-2 DMK

RED GINGESTED HEAVY GBE
COZES FLUID LEAKS SOURCE ZON

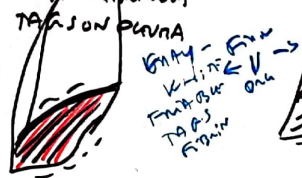


RED HEPATIZAN

②

2-4

FIRM DAMAGED
DAY GBE
FEW RIGIDOUS
TANSON PUNCTA

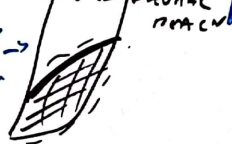


GREY HEPATIZAN

③

4-8

FIRM DAY GREY
GRAMULUM GBE
ESTABLISHED PUNCTA
PUNCTA

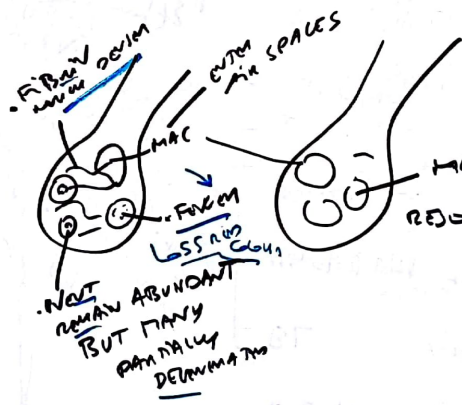
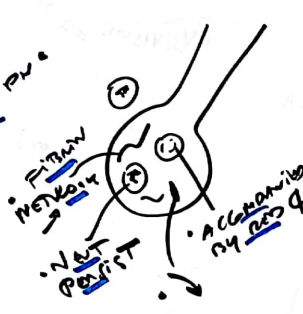
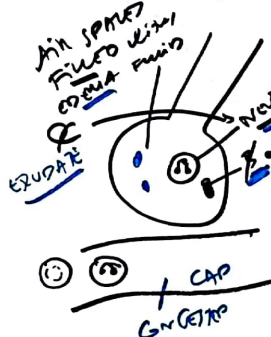
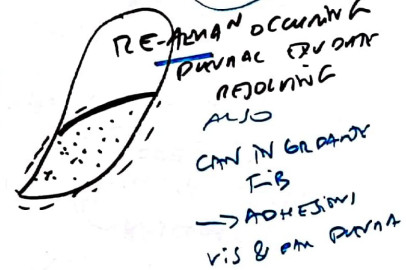


FEATURES
LOBAR PNEUMONIA

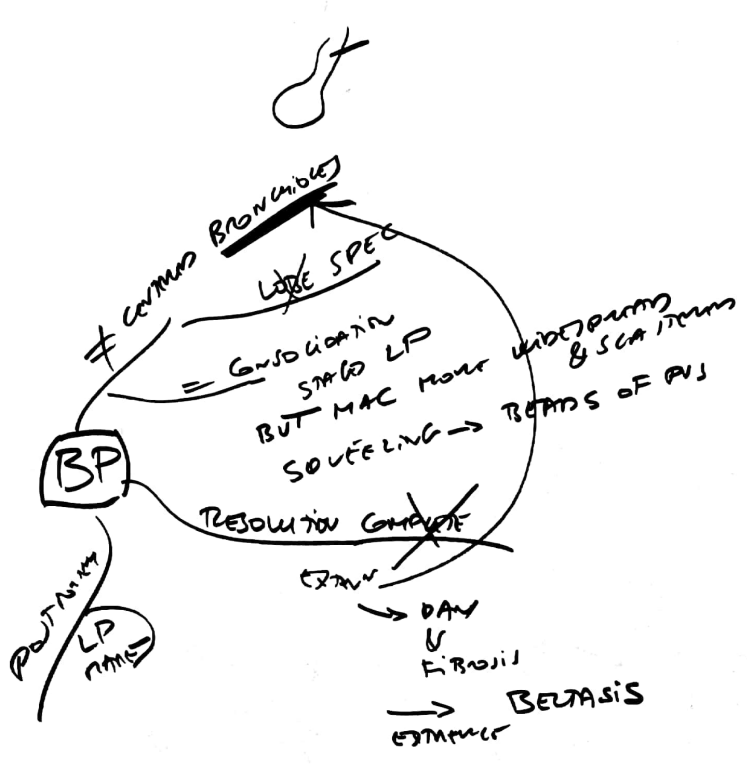
RESOLUTION

④

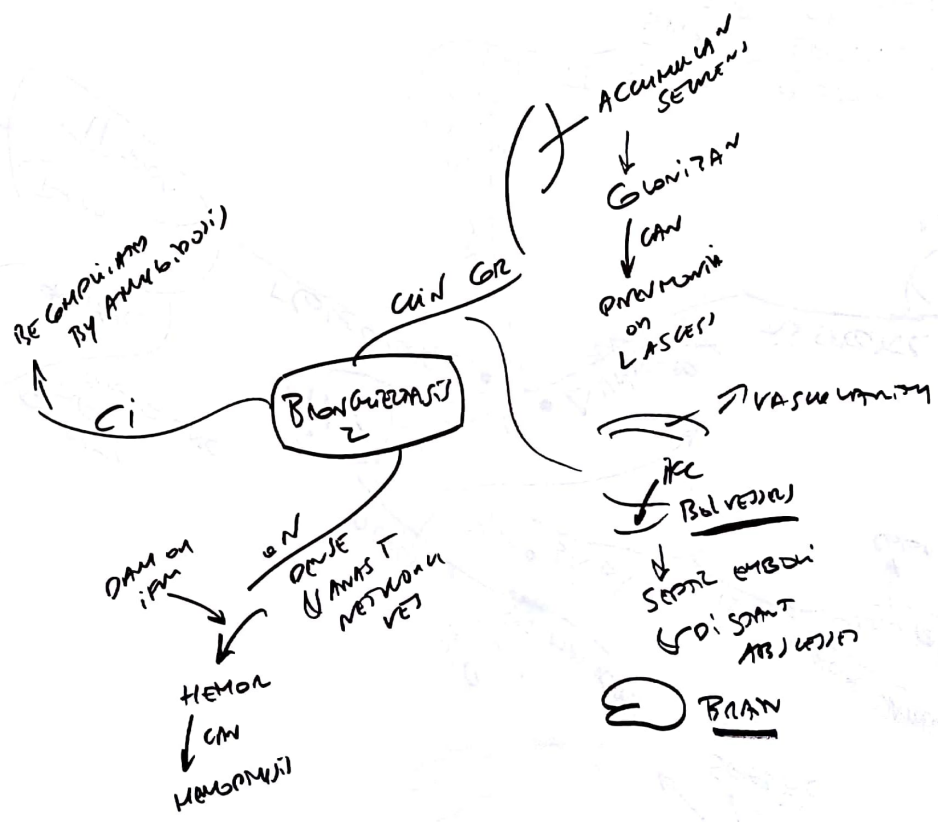
8 -> 1-3 W



+ FIBRINOCLYTIC ENZ
MAC REMOVE DEBRIS
RESOLUTION = RESORPTION



GWSOLIDAN
 ↓
 MAFJUIS
 ALJONIM
SOFTGAS



[Faint handwritten notes on the left page, including "TB" at the bottom left.]

POSSIBLE SEQUEL TO TB

2° / RECEIVING

+ CAVITY
 CAVITY
 MOTT
 COLONIES
 TB FUNGUS



MILIARY

SMALL NODULES
 MAY BE
 SCATTERED
 TH - COLONIES
 (MAY OCCUR
 10 ON 20)



TB BP

CAVITY RING
 RING INTO
 TB &
 SECRETIONS
 B TUBER
 → Granulation

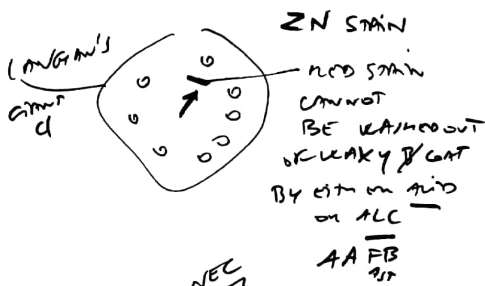
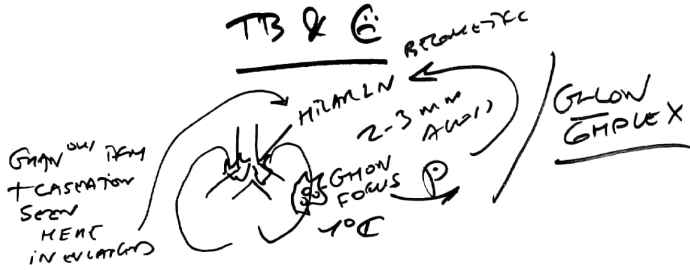


EMPHYSEMA

→
 VISUAL
 PLAIN
 OF CASPARI MATERIAL
 SPACED INTO
 PLEURAL SPACE

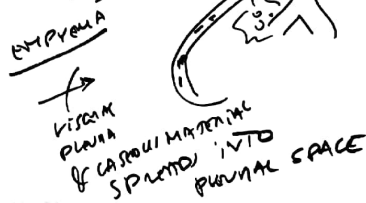
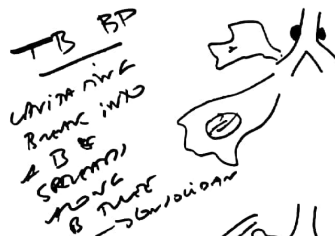
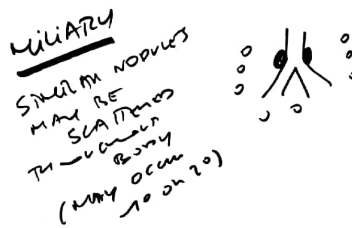
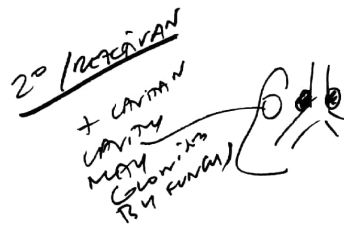


TB & E

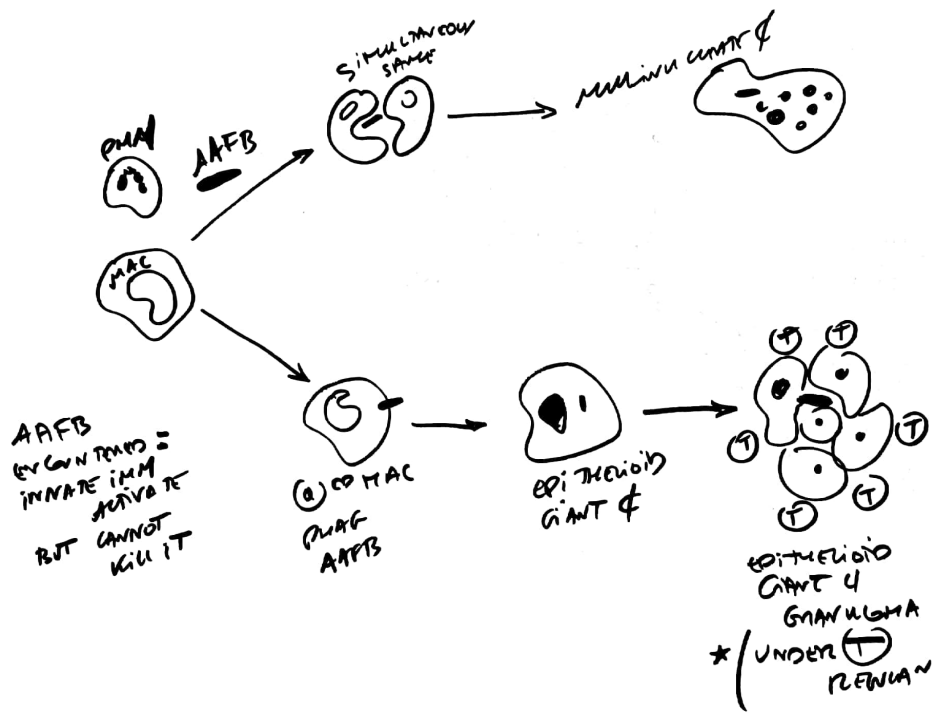


- EXTRAPULM ANY PART MAY INVOLVED → TB & STROMA
- HOWEVER INTESINAL ↑ MILK → SKAVUSUS SPUTUM MYGB MUMBI MYGB TR BVS

POSSIBLE SEQUEL 10 TB

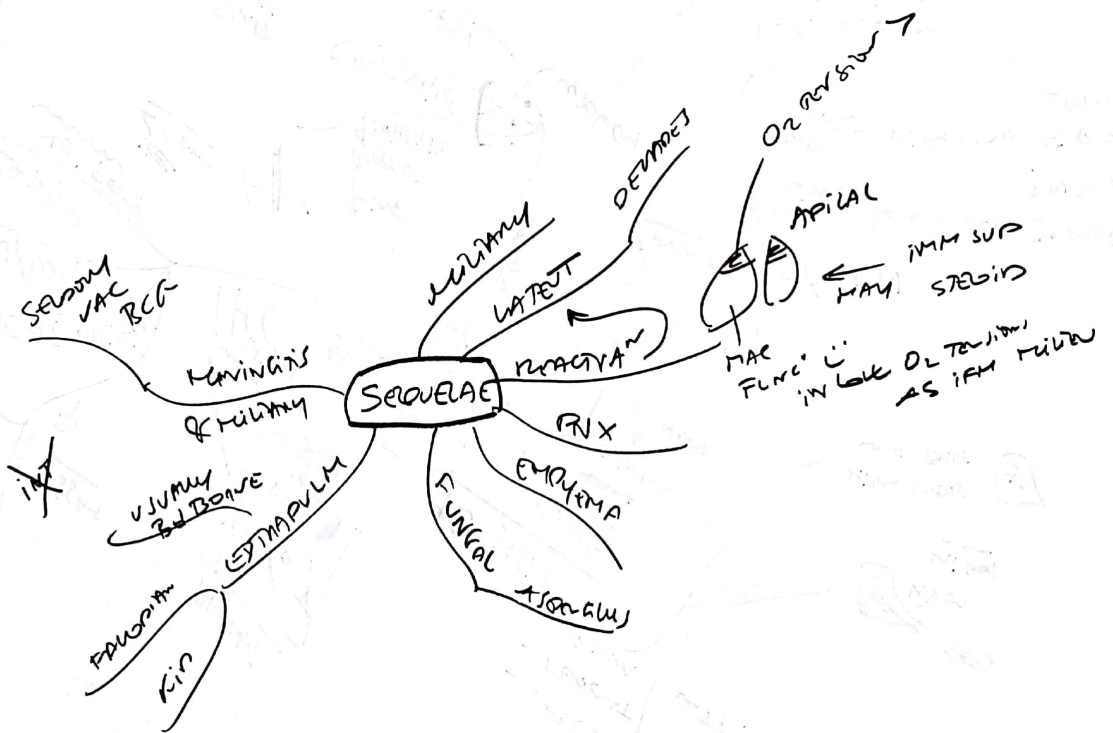


GRANULOMATOUS
IFX IN TB

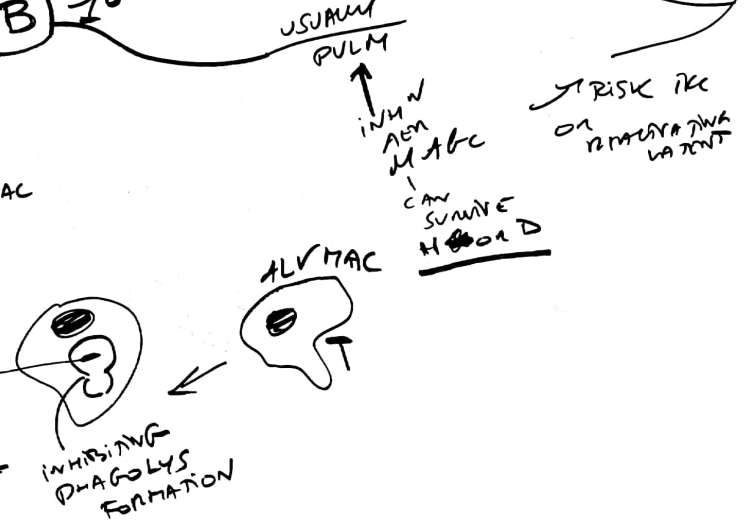
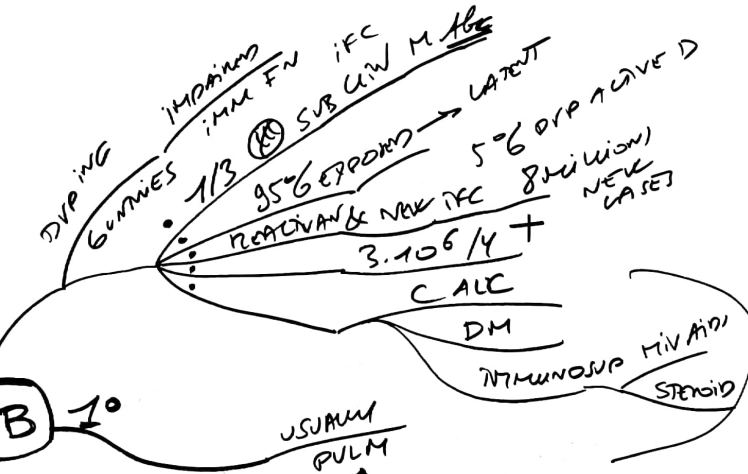
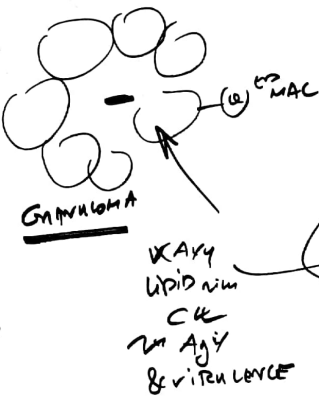
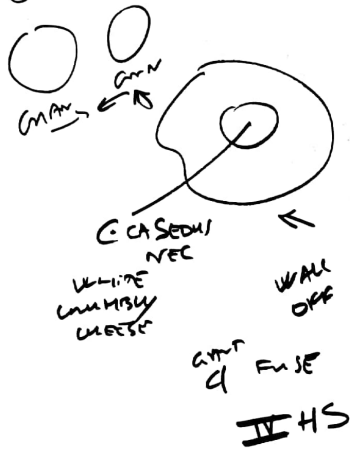


AAFB
 BY GAINING =
 INNATE IMM
 ACTIVE RE
 BUT CANNOT
 KILL IT





GALENA & BUBBLE OIL
 MENTHOL INTO LUNG
 SUOY 2500 138



⊖ dx m - mc rfc

MANTOUX MAY ⊖ even 10

MAY TAKE 6 Wks
70

TUBERCULOSIS
~~INDIAN~~
EMPHYSEMA

⊕ MANTOUX
↓ IMM RS
FOR DAYS

IF TBS ^{evolution} _{3 weeks}

CLINICAL DIAGNOSIS

ST&S
2++

OPTN ST IF 10

MILD C LOUGH
C+ Ptd SPUN M

FERR

WIGHT LOSS

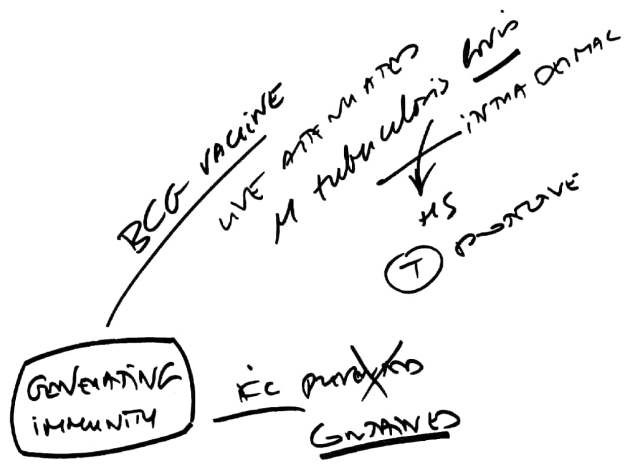
NIGHT SWEATS

Bp

FEV & OUSP

CAN IFC
ANY DMIT

→ FURTHERING
OTM D



POST TO TIL & HUM (H) → CONTAINED

~~HAPT~~
TB MASON CASE IN 3508 HIV ⊕
HIV 40-106 ⊕

REPRODUCTION
M TBC
HIV + T4
MAC 3

HIV & TB

IMM SUP → REPRODUCTION LATENT

PRODUCE HIV
↑
INFECT → MAC
CD4+

TB

⊕ (T)

MAC

STIMULATING GENE EXPRESSION
IN UNBOUND
INTERACTED WITH GENE

IPHYSEMA



IN LOBULAR

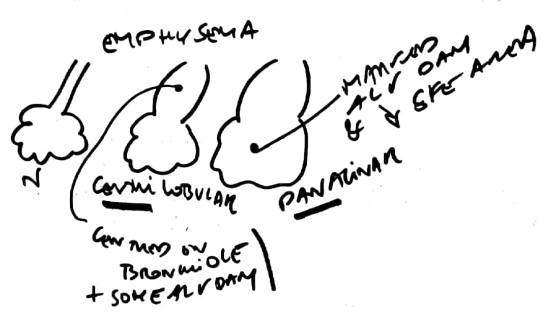


PANCREAS

MANCROS
ALV
& SPE ANCA
DAM

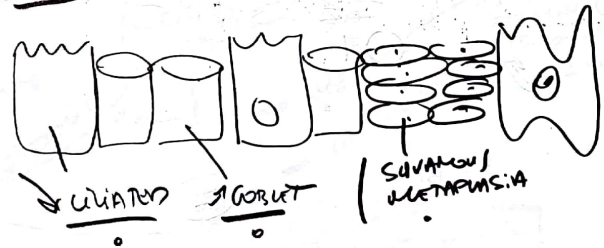
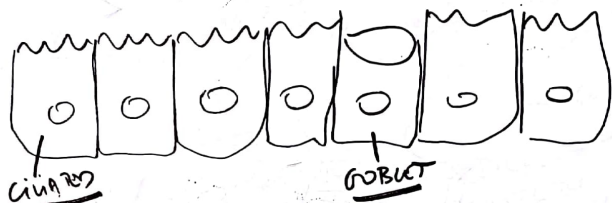
TRIP BY
BRONCHIOLE
HEALV DAM

COPD

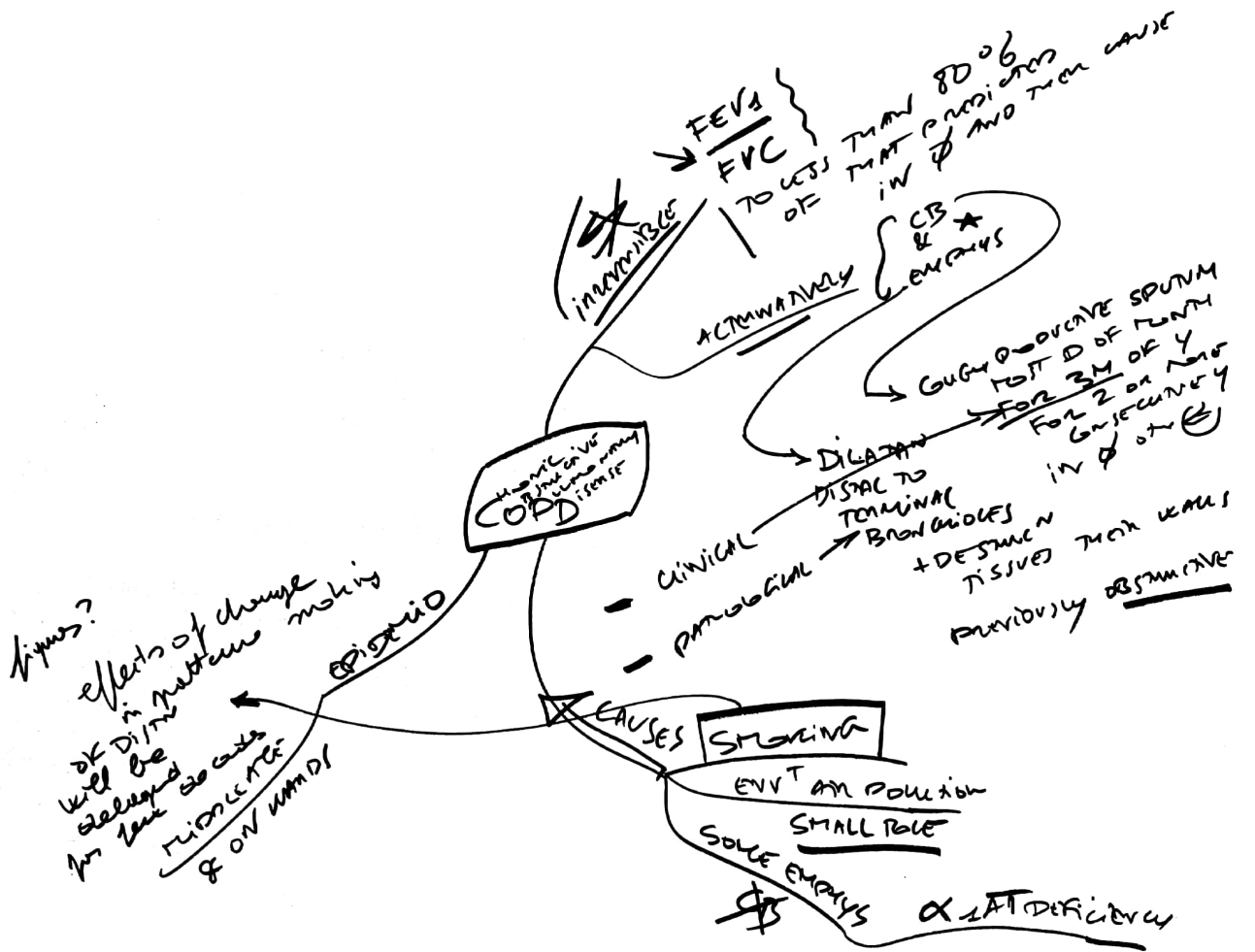


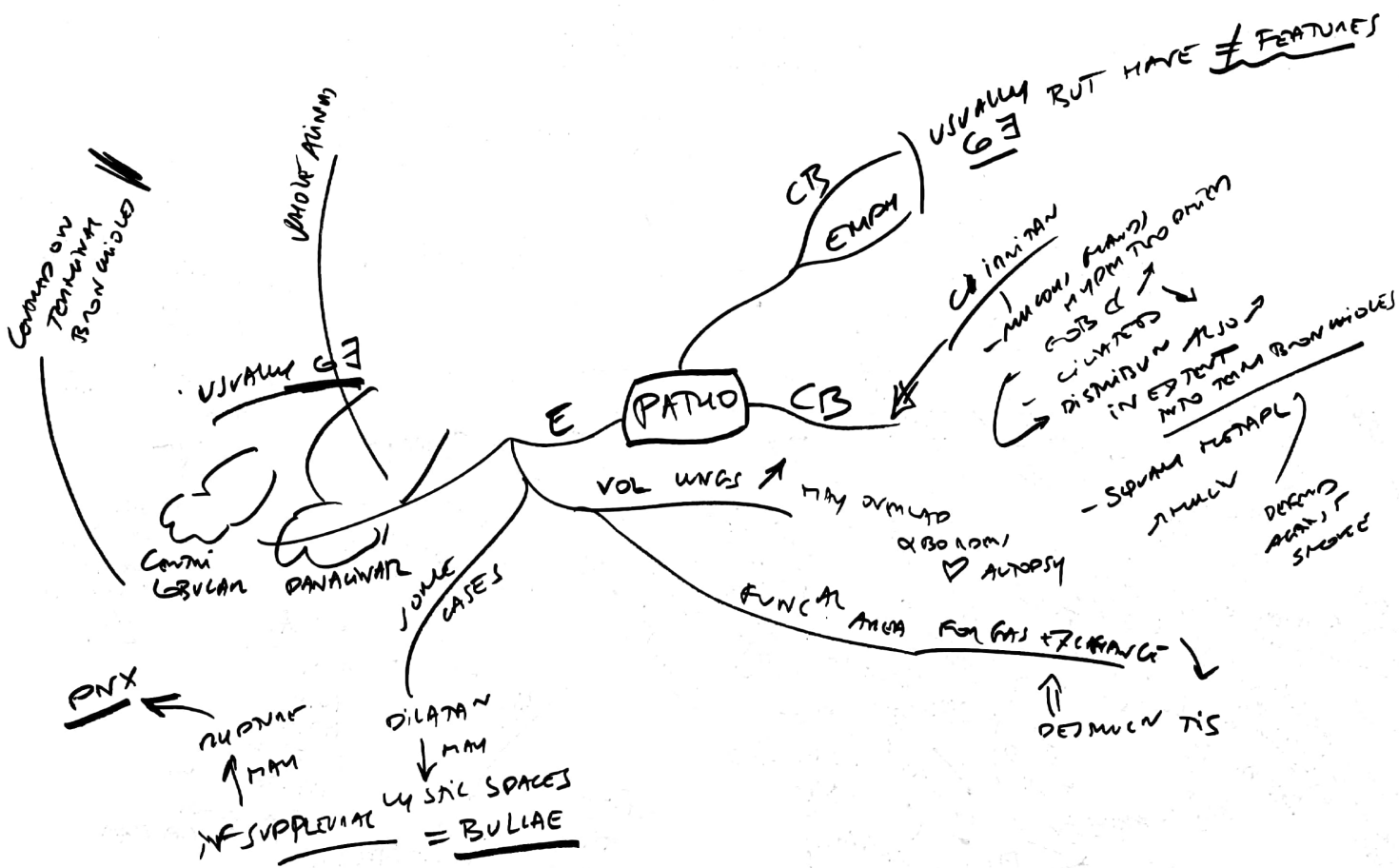
~~THREE & END GAPS~~

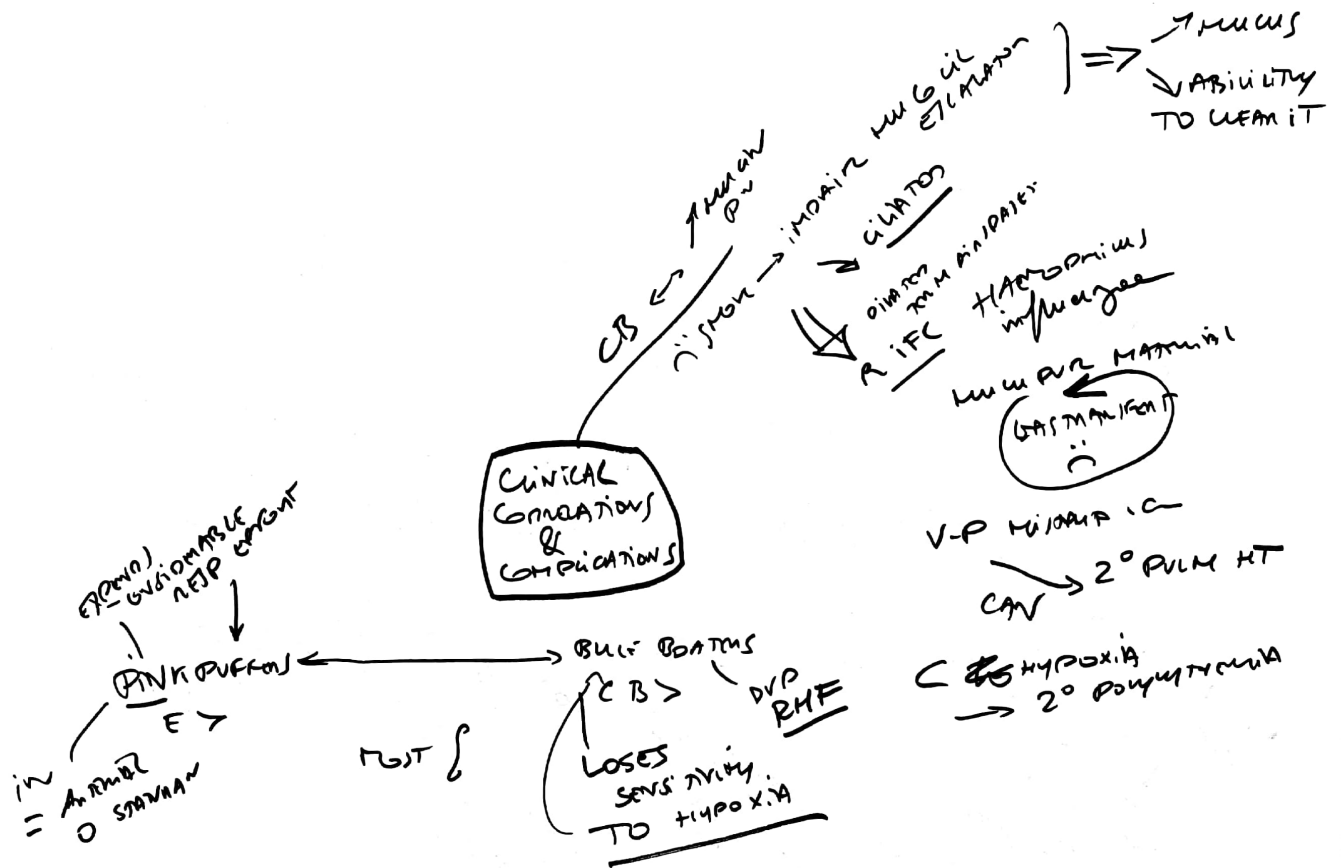
CB

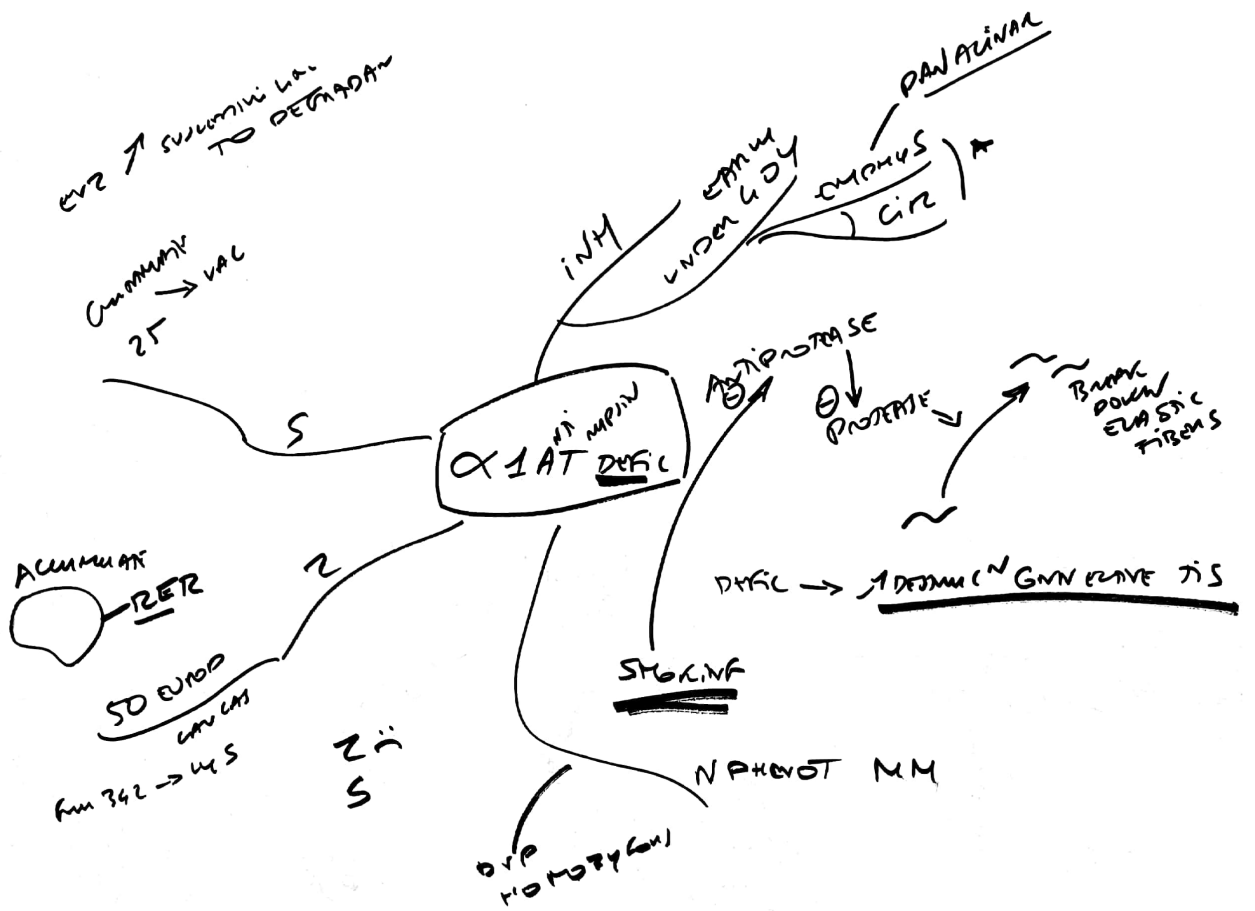


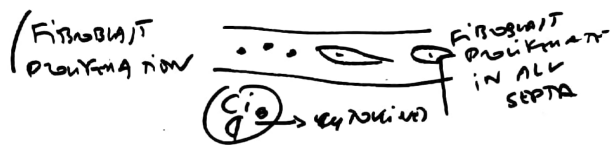
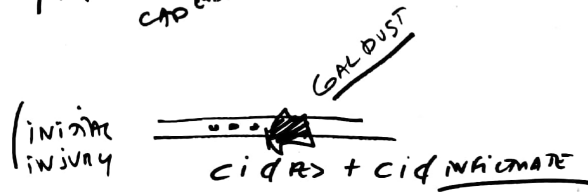
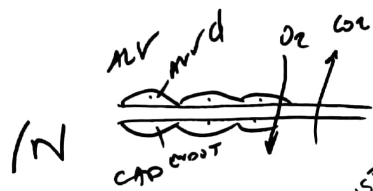
~~VASCULAR~~
TUMORS

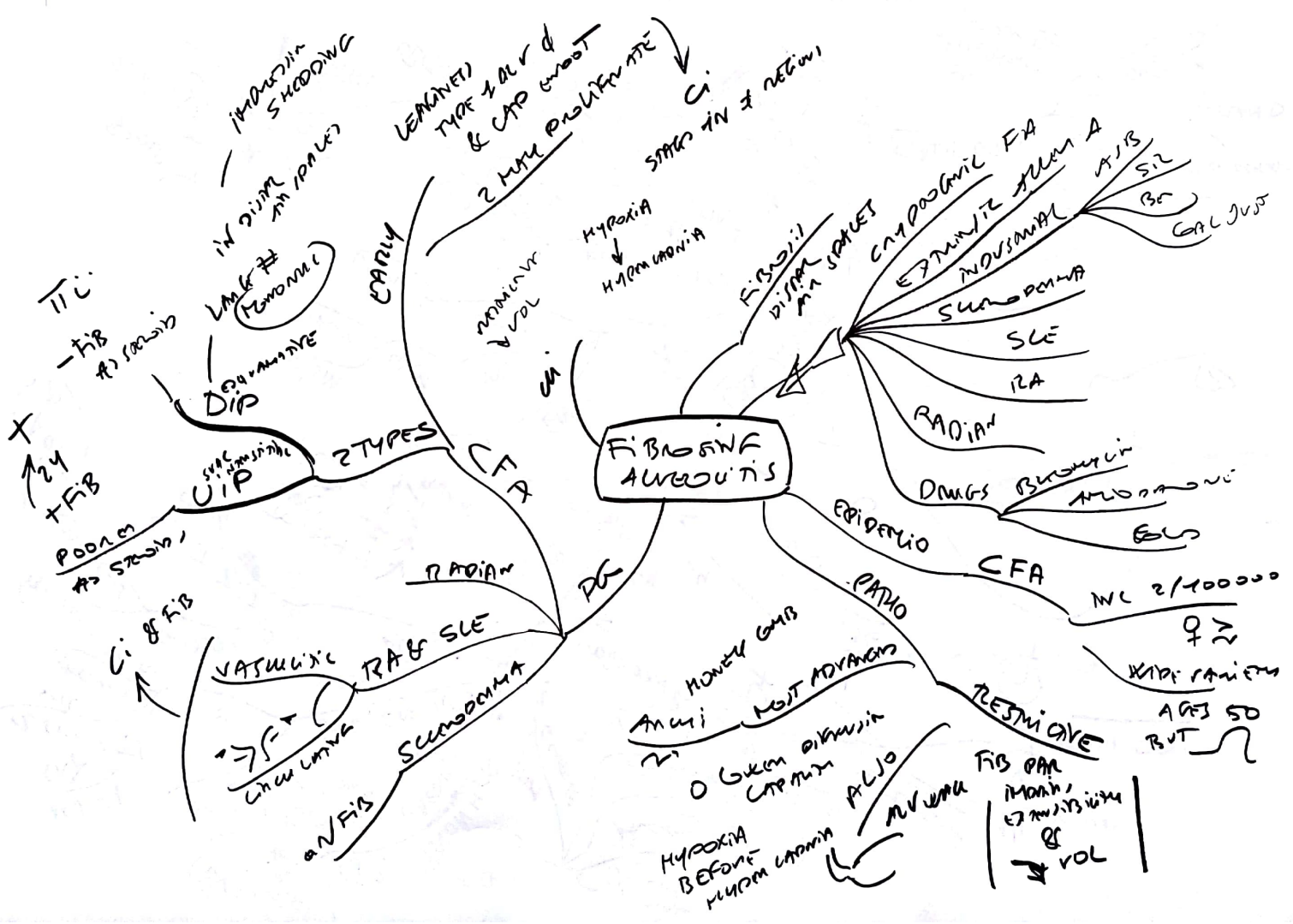








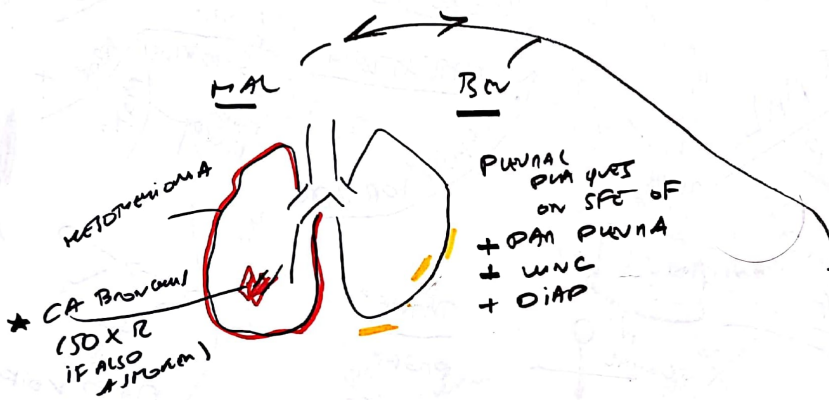
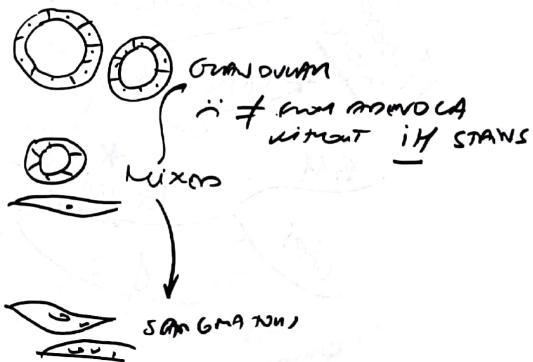




MESOTHELIOMA



HISTOTYPES



BLUE ASBESTOS FIBRES (CROUDOUTE)
 SMALL → TN/APEX
 C. IN LUNG → TNM FORMATION
 OFFEN ON CASES WITH
 HOMO SIDENIN = EMANATION BOOET
BLUE STAIN (DM's STAIN)

OTM TNM

MAL

CARCINOIDS NEUROENDOCR OR CLONE OF INDOLE

LY USUALLY (B) MALT R. UNCL. MAY

BCV

B HEMANGIOMA
 W/IN LES. ATODIV

MIXED ELEMENTS
 APPROPRIATE SM CAN

