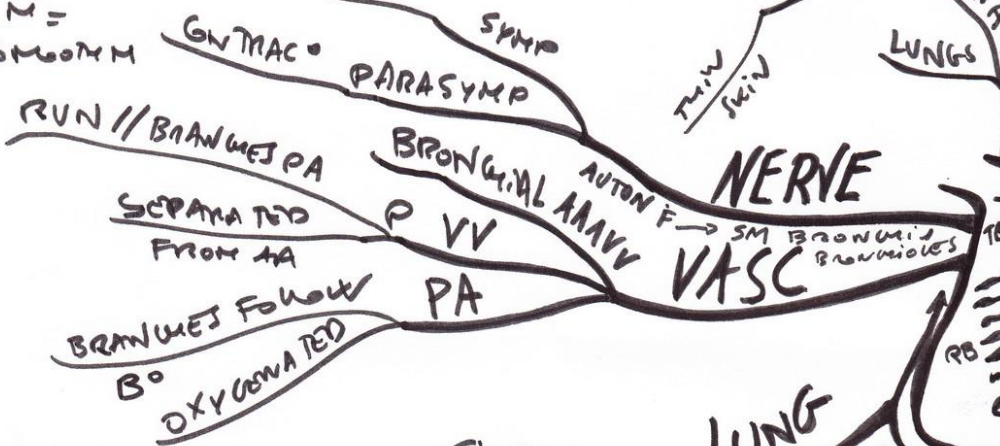


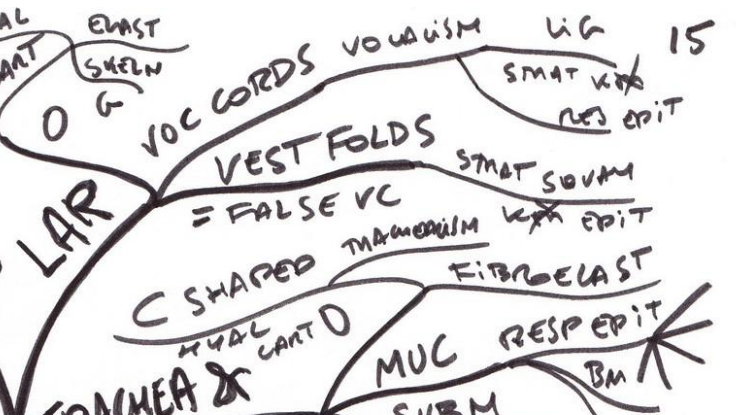
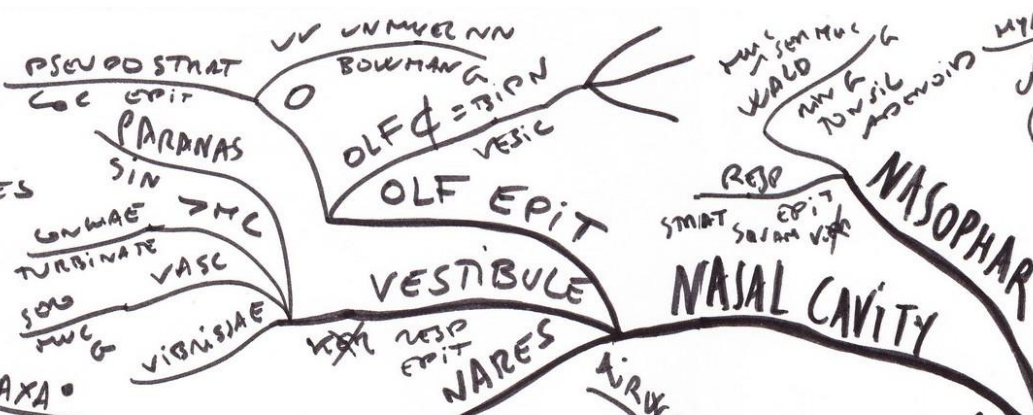
- I = PRIMARY
- II = SECONDARY
- B = BRONCHI
- B° = BRONCHIOLES
- T = TERMINAL
- R = RESPIRATORY
- A = ALVEOLAR
- D = DVTS
- S = SACS

SM = SMOOTH



# CONDUCTING

## NASAL CAVITY



# RESPIRATORY



## NERVE

## VASC

## LUNG LOBULES

## INTERALV SEPTUM

## ALVEOLI

