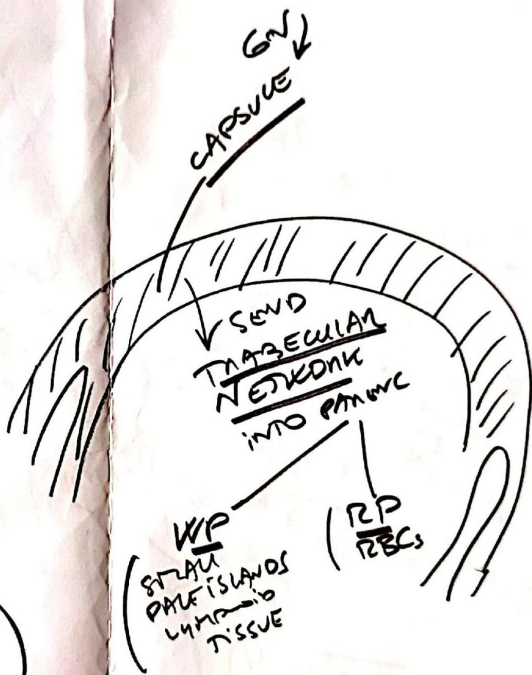
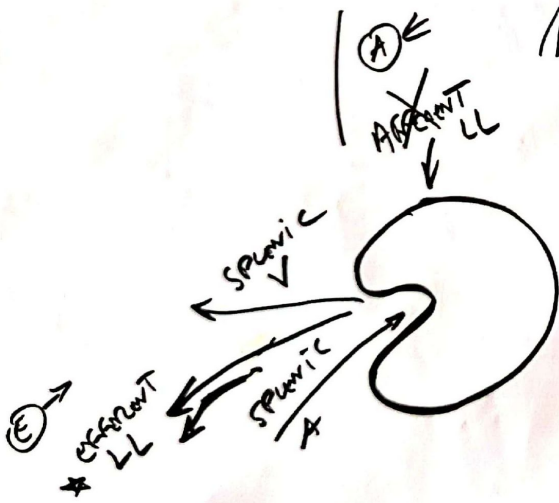
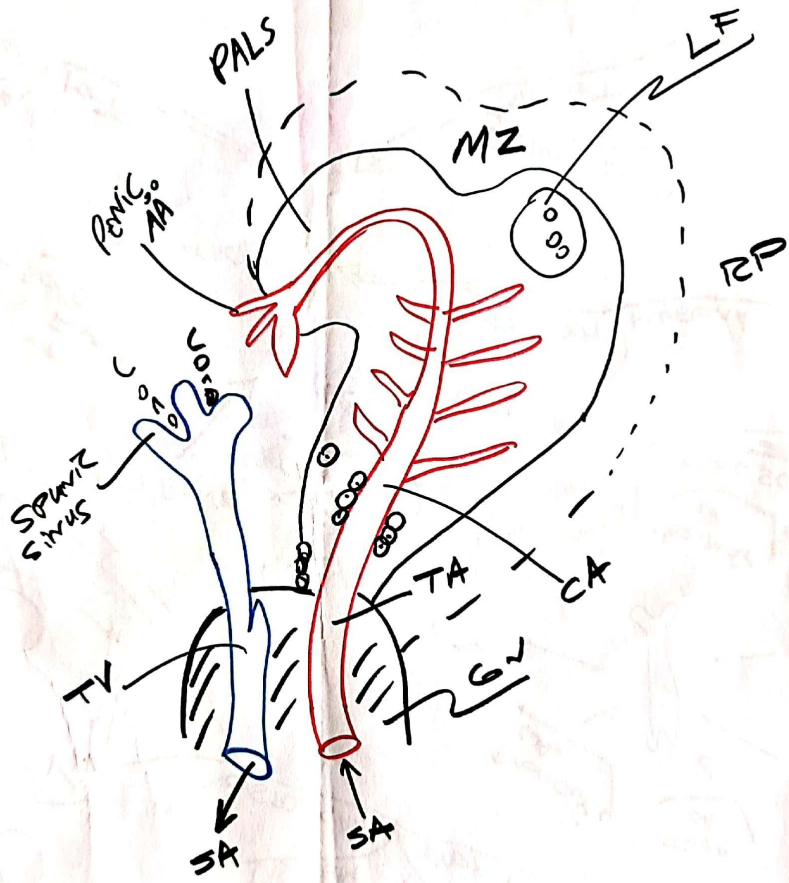


XRAY



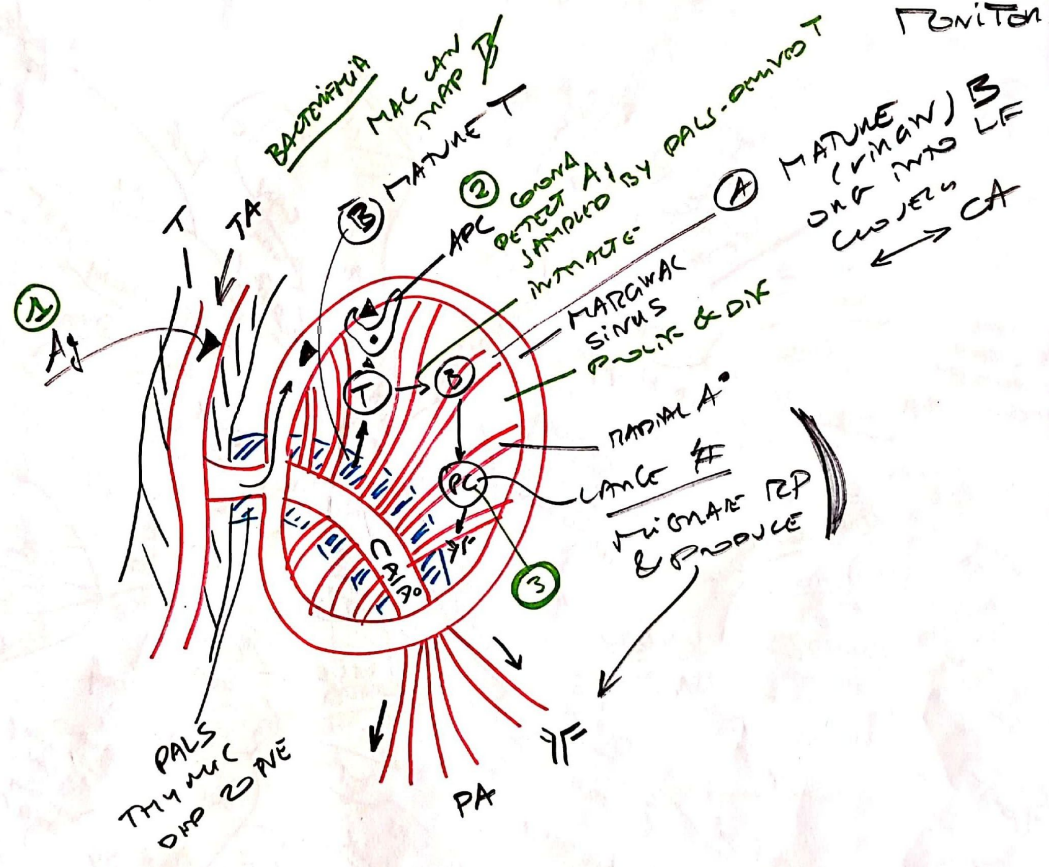
② GENERAL FEATURES  
- LARGEST LYMPHOID  
150g

NORMAL  
ANATOMY  
&  
VASC  
PATTERN

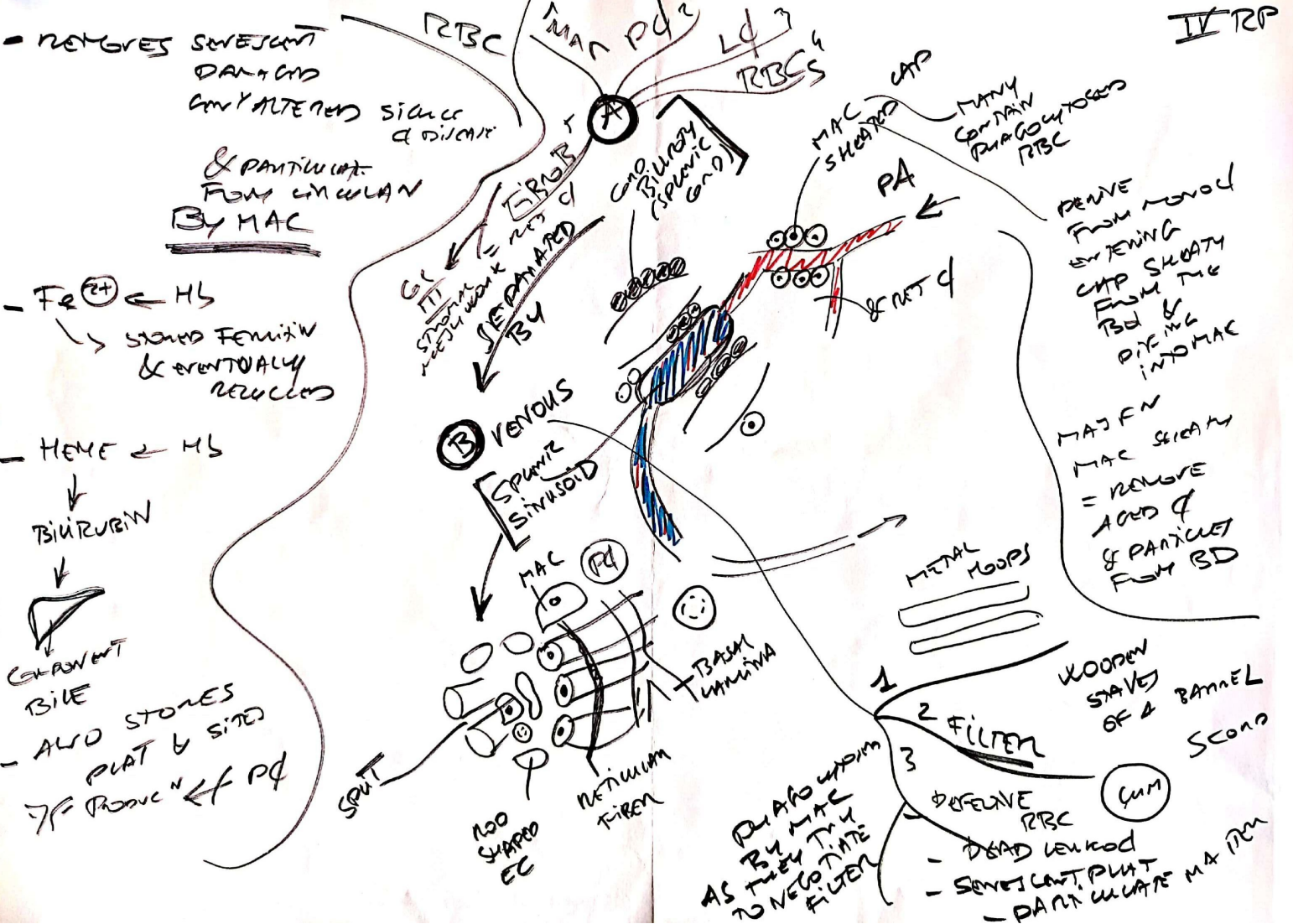




II WP  
UNITAS BD







- REMOVES SWEET SPOT  
DAN + GND  
CONV ALTERED SIZES  
& PARTICULATE  
FROM CIRCULATION  
BY MAC

-  $Fe^{2+}$  ← HS  
→ STORED FERRITIN  
& EVENTUALLY  
RELEASSED

- HEME ← HS  
↓  
BILIRUBIN  
↓  
CARABENT  
BILE  
- ALSO STORES  
PLAT & SITES  
7/8 PRODUCED ← P4

RBC  
IMAN P42  
L4  
RBCs  
MAC SHEATH CAP  
MANY CONTAIN PHAGOCYTOSED RBC  
PA  
REMOVE FROM MONOC  
ENTERING  
CAP SHEATH  
FROM THE  
TRABEC  
ENTERING  
INTO MAC  
MAY FN  
MAC SHEATH  
= REMOVE  
ACID &  
& PARTICLES  
FROM SD

GC  
ITL  
SPERMATOCYTES  
= RES  
BY  
SEPARATED  
BY  
SPERMATOCYTES  
(SPERMIC  
GND)

VENOUS  
SPERMIC  
SINUSOID  
MAC (P4)  
TRABEC  
TRABECULA  
NETILUMIN  
FIBER  
NO SHAPED  
EC

METAL  
HOOPS  
WOODEN  
STAVES  
OF A  
BAMBER  
SCAND  
3  
DEFENSE  
PBC  
- DEAD LEUKOC  
- SWEET SPOT PLAT  
- PARTICULATE MA FN

IVTRP