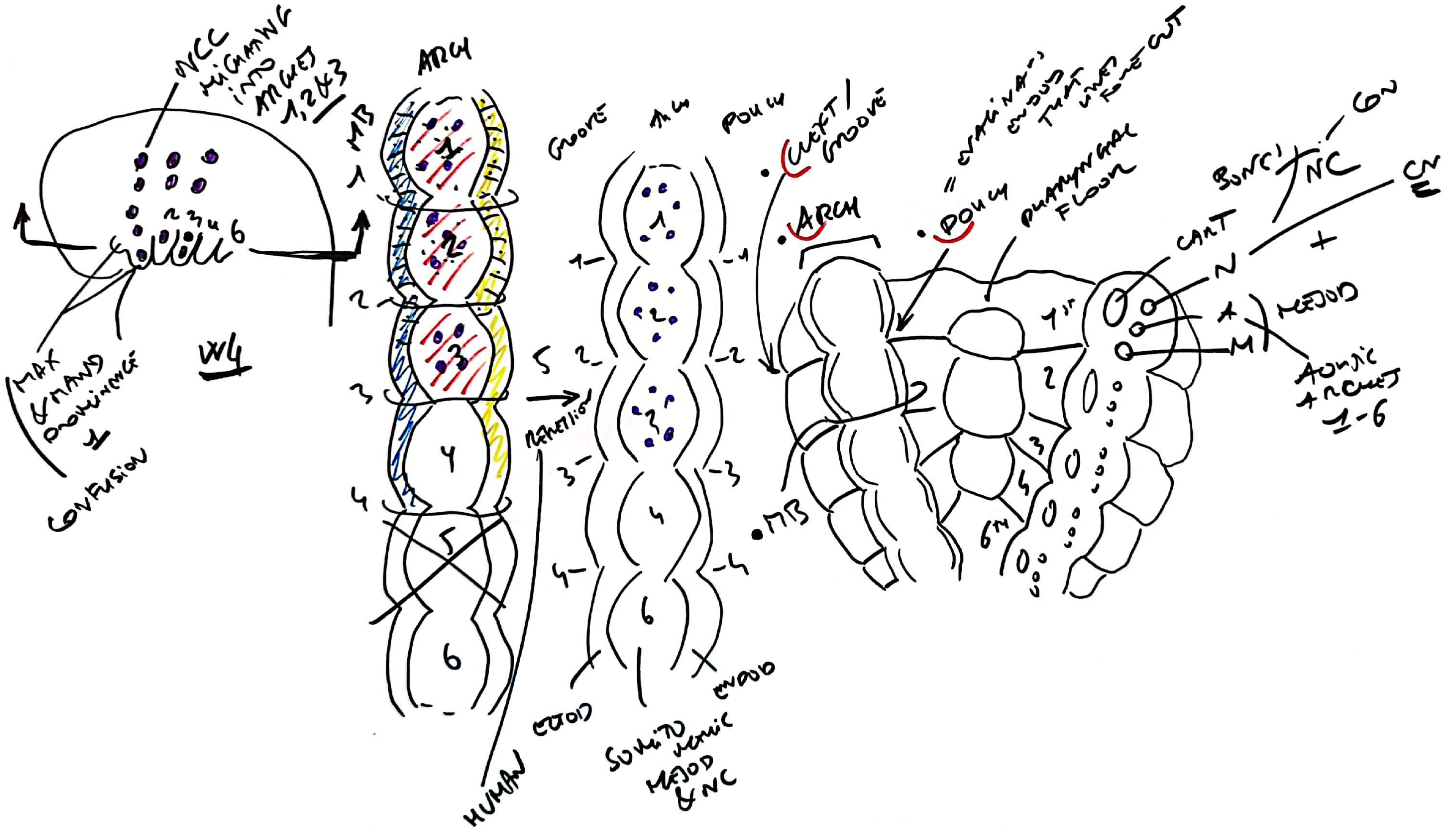


BRANCHIAL APPARATUS = PHARYNGEAL



NEURAL CREST
CART

MAX PROC
→ MAXILLA, ZYGOMATIC BONE

① MAND -
→ MECKEL CART
→ MAND
NEURAL & INVAS
S PHONO MAND LIG

② MANDIBULAR CART.
STAPES, STYLOID PROC,
LEZAR HORN MYOID,
STYLOID LIG

GRANULAR HORN MYOID
& LARVA BONY

③

AMYGDALIDS,
CHI GID,
GUMMULATE
LUNIFORM,
THYROID
VCO TO SING

④

MEUD

POST PHARYNGEAL GUMMULI (CHI);
CHI GUMMULI, LEVATION
VCO PALATINI

INSTRUMENTAL MAND LARYNX
ED UNIT

PULM AA
OVUMS INTRAVENOUS

MEUD

MM

MASTICAN
(M. PTERIGOID, M. MASSETER,
M. PTERIGOID (S),
MYOLOHYOID, & BELLY
DIGASTIC, TENSOR TYP,
& 1/3 TONGUE,
TENSOR VETI PALATINI

BUCCAL EXPRESSION

STAPEDIUS, STYLOHYOID,
PLATYMA, II BELLY DIGAS

STYLOPHARYN
COM COM AA
ICAN AA

MM SOFT PALATE

RSCA
MM

SAM NOT OM
ANTO ANCHI NCL
NN LOER NCL

CN V3 CHOW

VII SEVEN
SMILE

IX STYLOPHARYNGEUS
SWALLOW STYLISHLy

X > LAR BRANCHY
SIMPLY SWALLOW

X REC ← LAR
BRANCHY
SPEAK

ARCH
DERIVATIVES

NOOBS

- PTERINE ROBIN SET
MONATHIA, GROSSI PPOHIS
LIGET PAL, ANK OBSTN

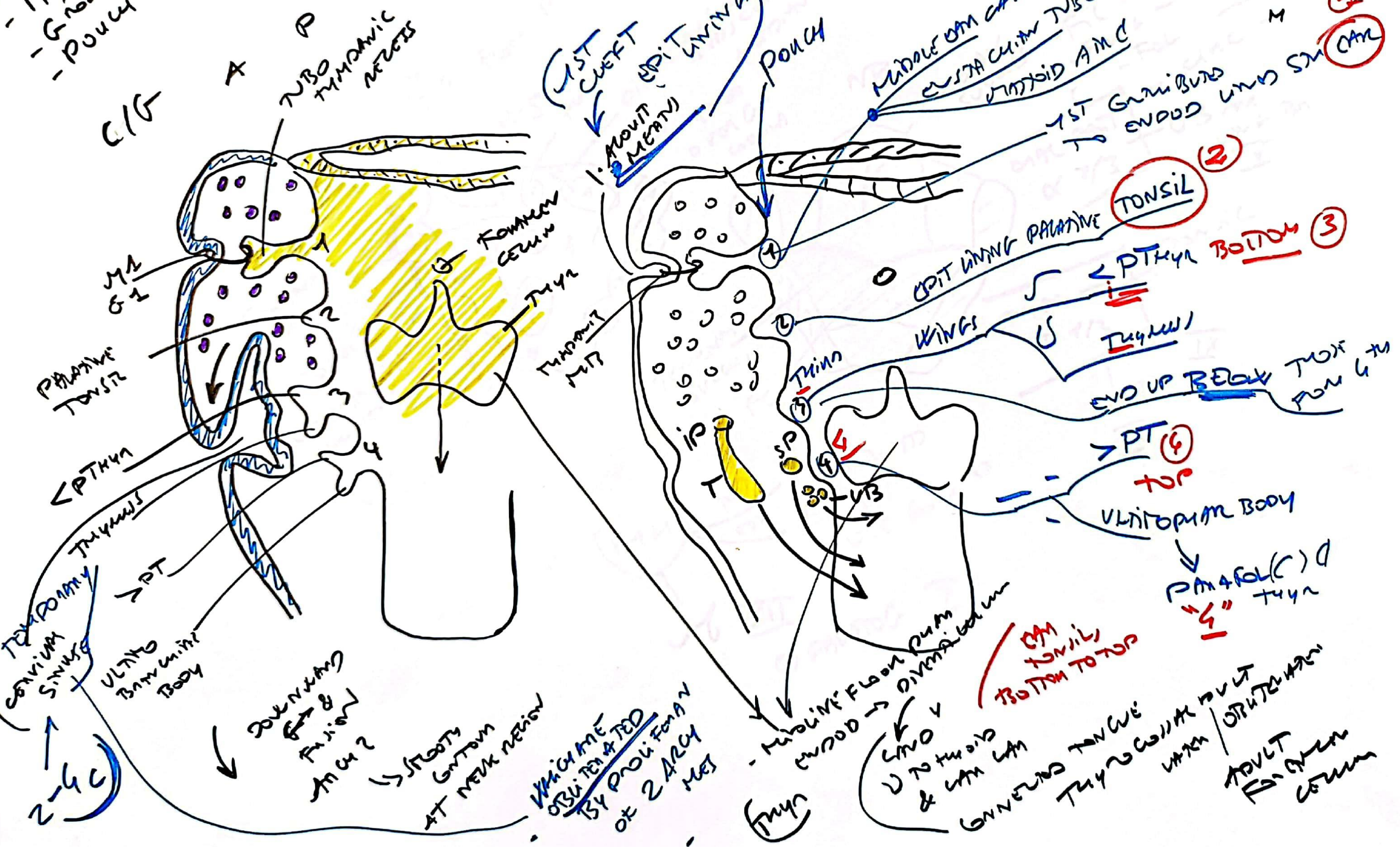
TRACHEUM COLLUMS SD
AD NC DYSFN
→ CRANIO FACIA CAN
(24 BONE & MAND = PTERID)
HEARING LOSS,
ANK GROWTH

3-4 → II 1/3 TONGUE

5 INTRON ORPHI
CONTRIBUTIONS

FATE

- A14
- MR
- Groove
- Pouch



1st GERM LAYER
ENDODERM

PHARYNGEAL TONSIL

PT
THYROID GLAND
TRACHEA

ULTIMOPHARYNGEAL BODY
PT
TOP

PARAFOL(C) C
THYROID
1/4"

CAN
TONSIL
BOTTOM TO TOP

GENUINE TONGUE
THYROID GLAND
ULTIMOPHARYNGEAL BODY
ADULT
FIBROUS
CAPSULE

WHICH ARE
ORIGINATED
BY PROLIFERATION
OF 2 ARCHES

STOOTS
GUTTUM
AT NECK REGION

DOWNWARD
FUSION
ARCH 2

ULTIMO
PHARYNGEAL
BODY

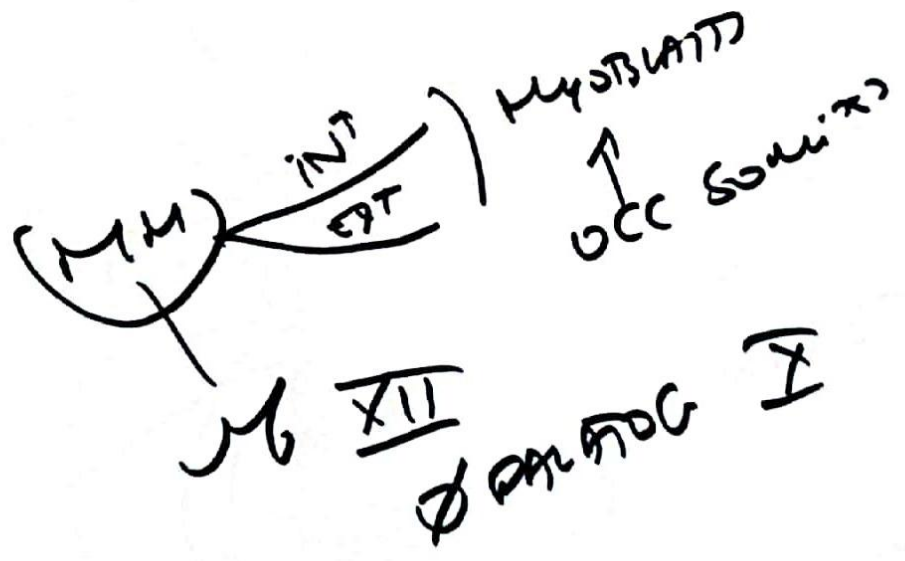
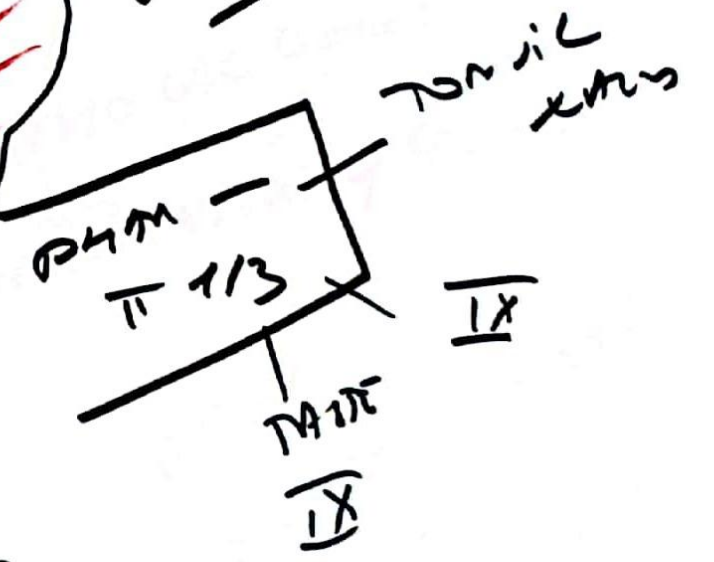
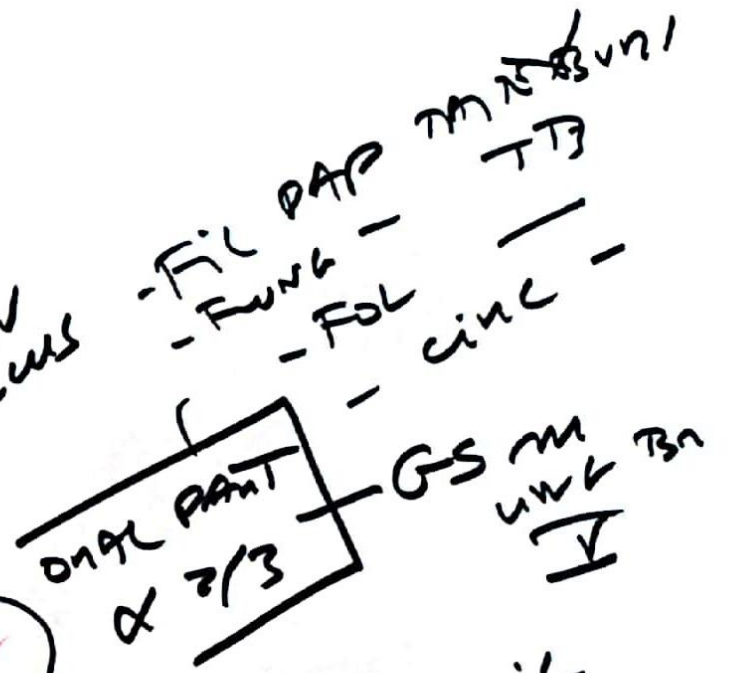
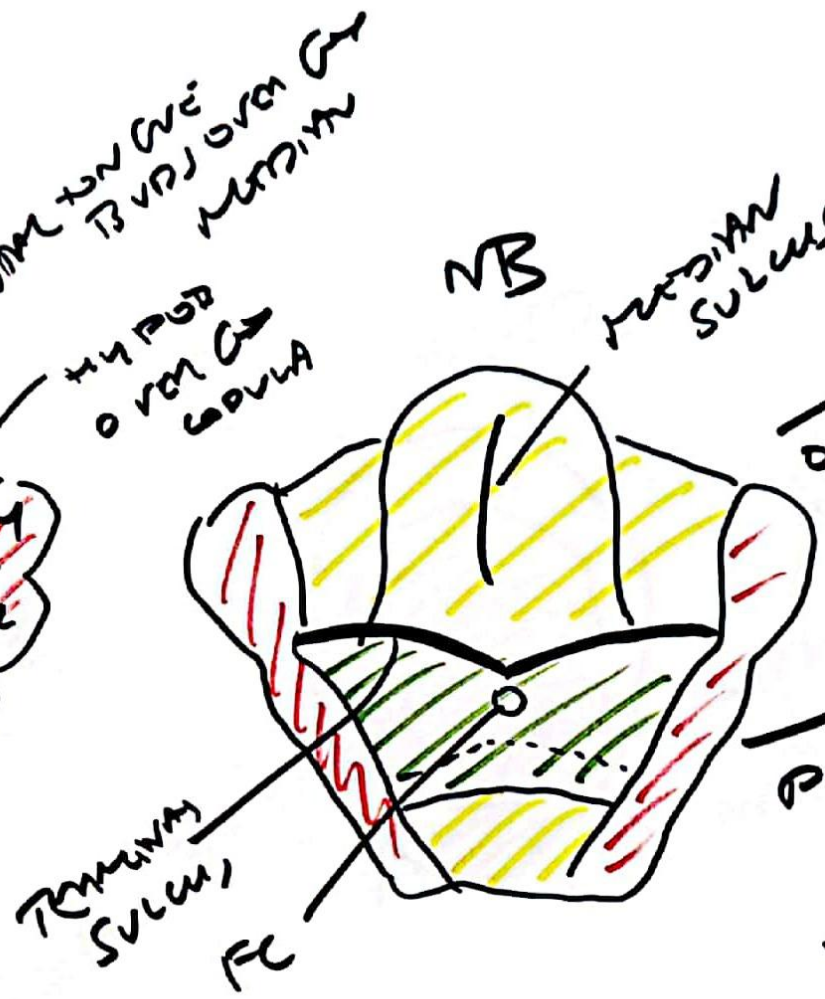
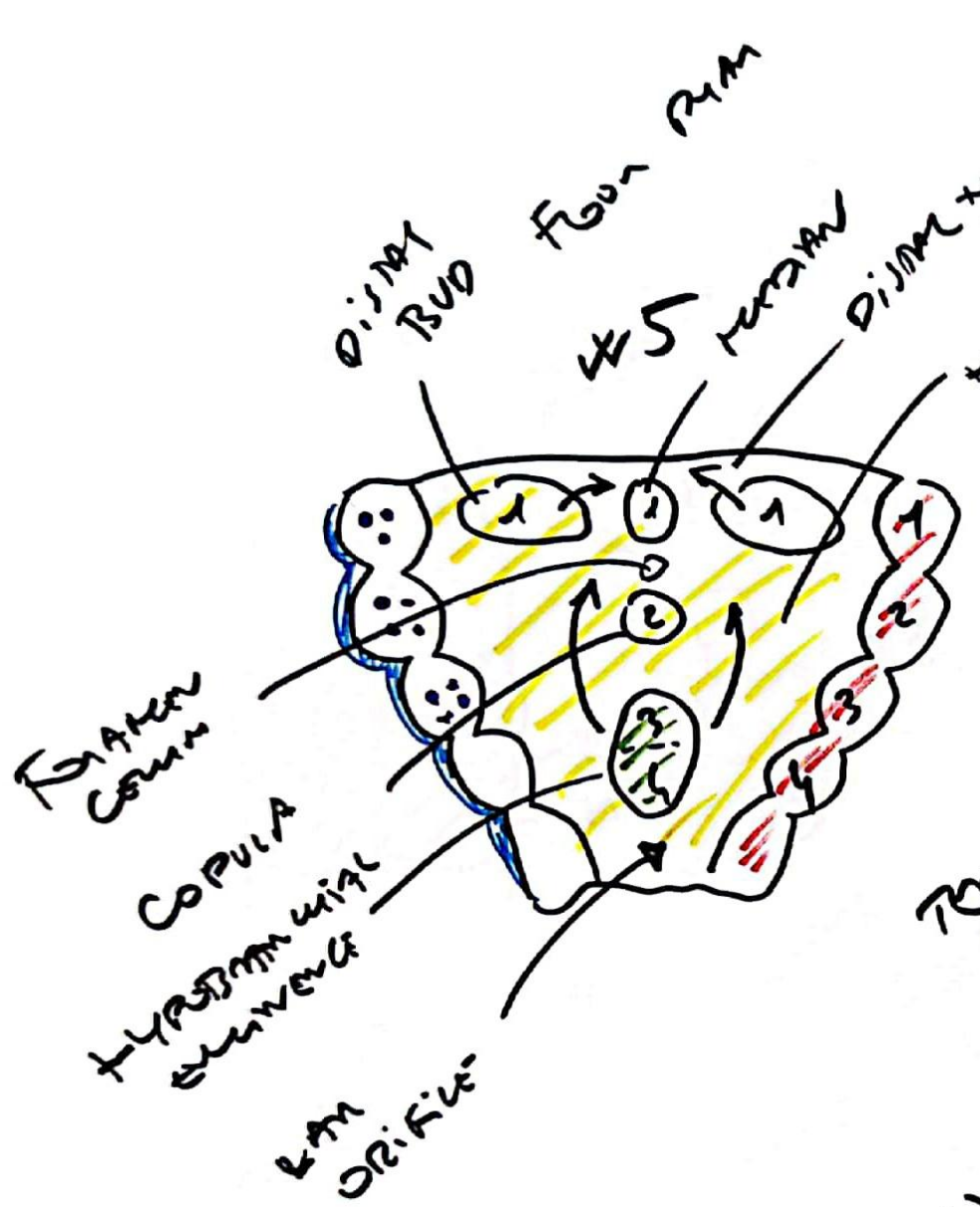
PHARYNGEAL
TONSIL

PHARYNGEAL
TONSIL

PT
THYROID GLAND

- A14
- MR
- Groove
- Pouch

TONGUE



- Fil PAP
- Fung
- FOL
- CINC

TH 1/3

TTB

GS M

TONIC

IX

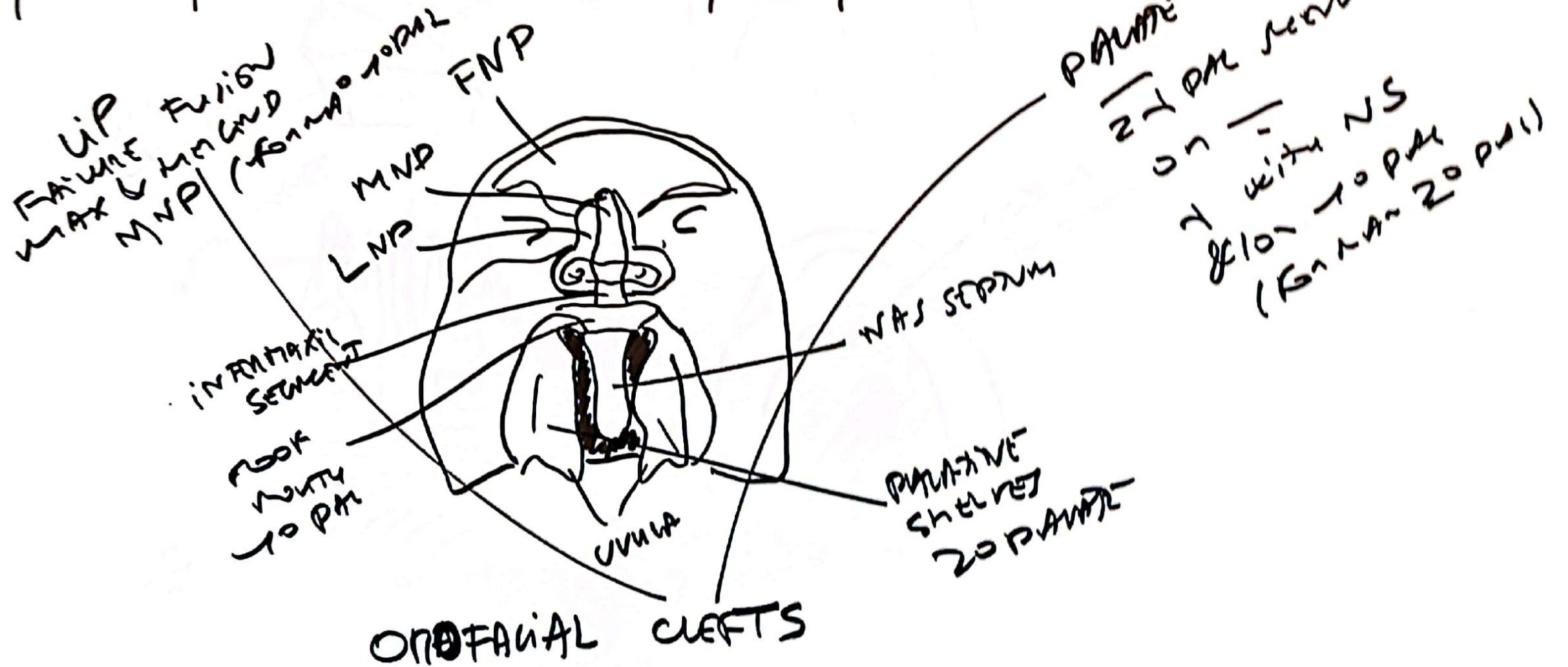
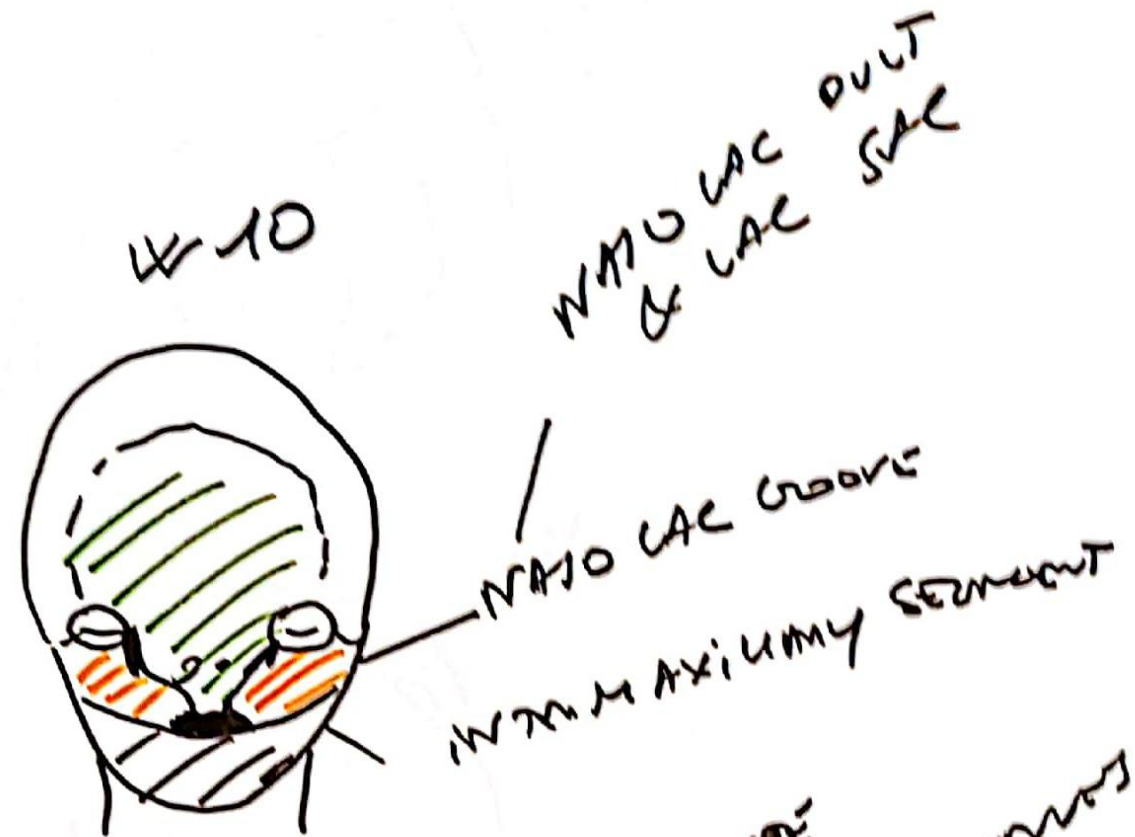
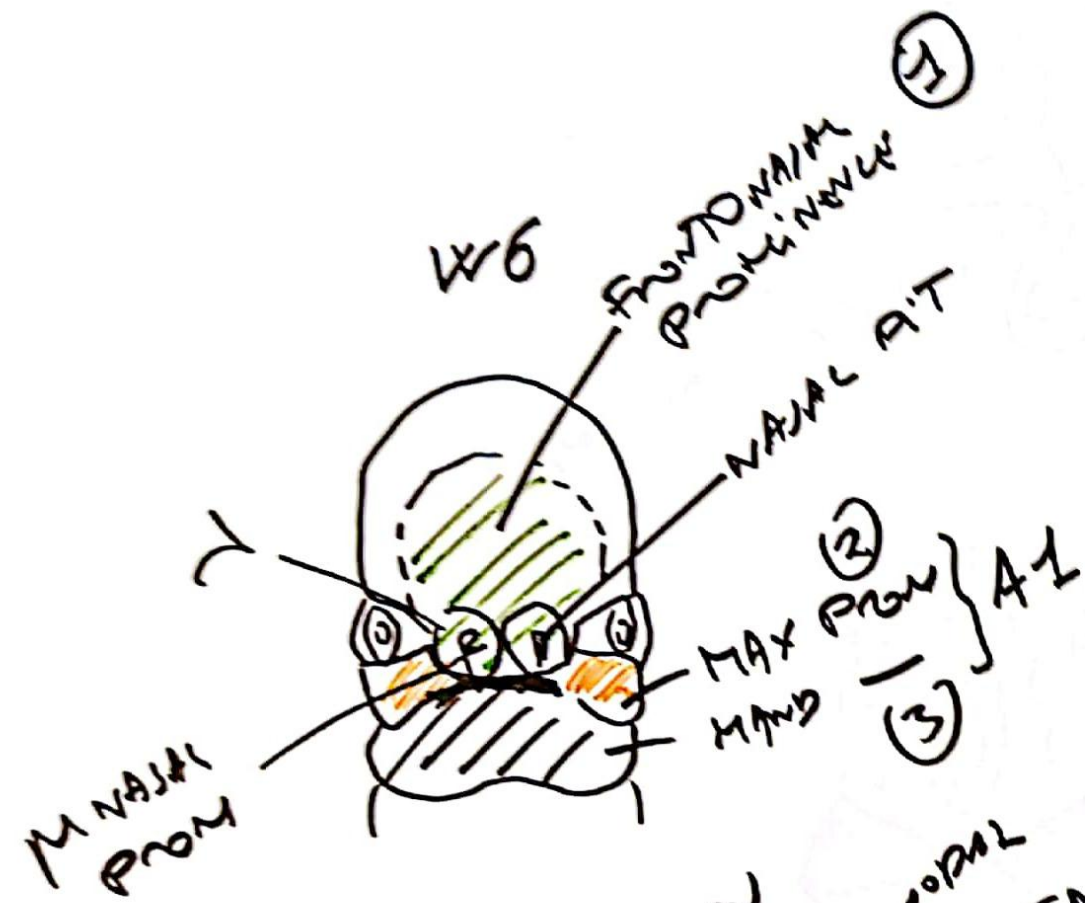
PAIR

IX

XII

PHM

IX



PAVATE

