

FACULTE DE MEDECINE TOULOUSE - PURPAN

LABORATOIRE D'ANATOMIE

**ANATOMIE DU SYSTEME
NERVEUX CENTRAL**

Tome II

Pr. Jacques MOSCOVICI

DFGSM 3

Année 2014-2015

Ce recueil de schémas d'anatomie du système nerveux central n'est pas un simple support du cours. Il contient des éléments complémentaires, donnés à titre indicatif, destinés à favoriser la compréhension et pouvant servir pour d'autres enseignements.

Une version en couleur de ce polycopié est disponible sur le site des Facultés de Médecine de Toulouse (www.medecine.ups-tlse.fr), rubrique « Ressources pédagogiques ».

ANATOMIE FONCTIONNELLE

VOIES DE LA SENSIBILITÉ

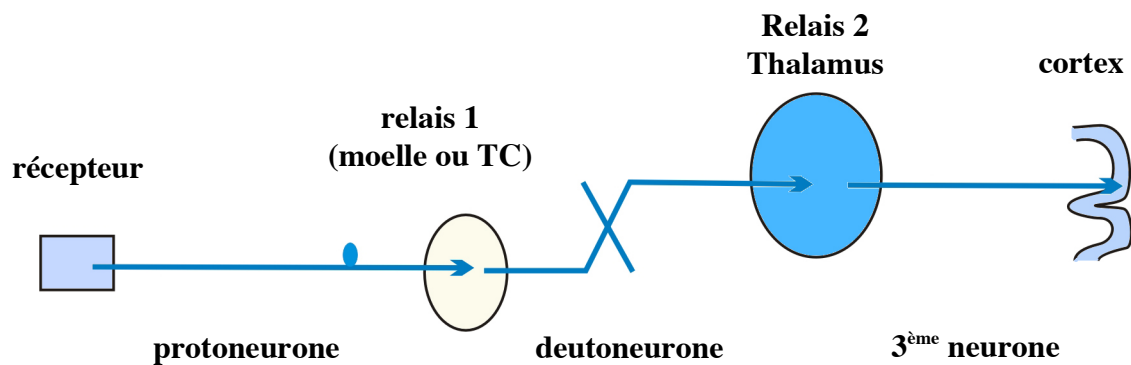
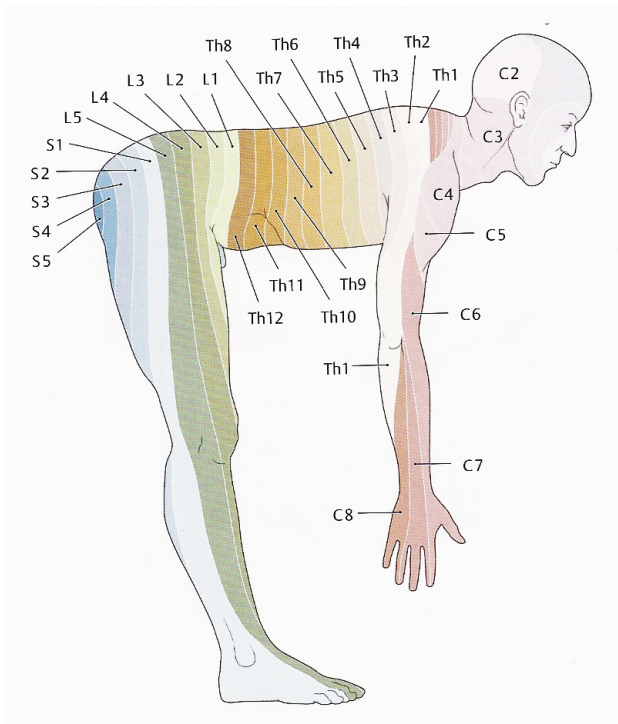
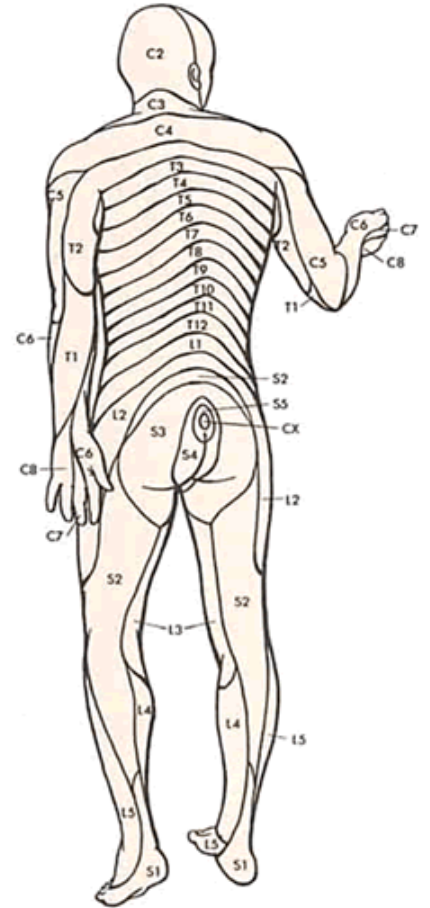
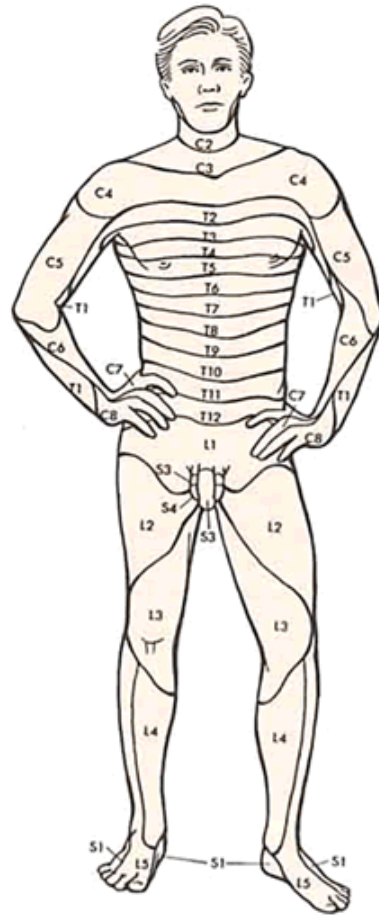
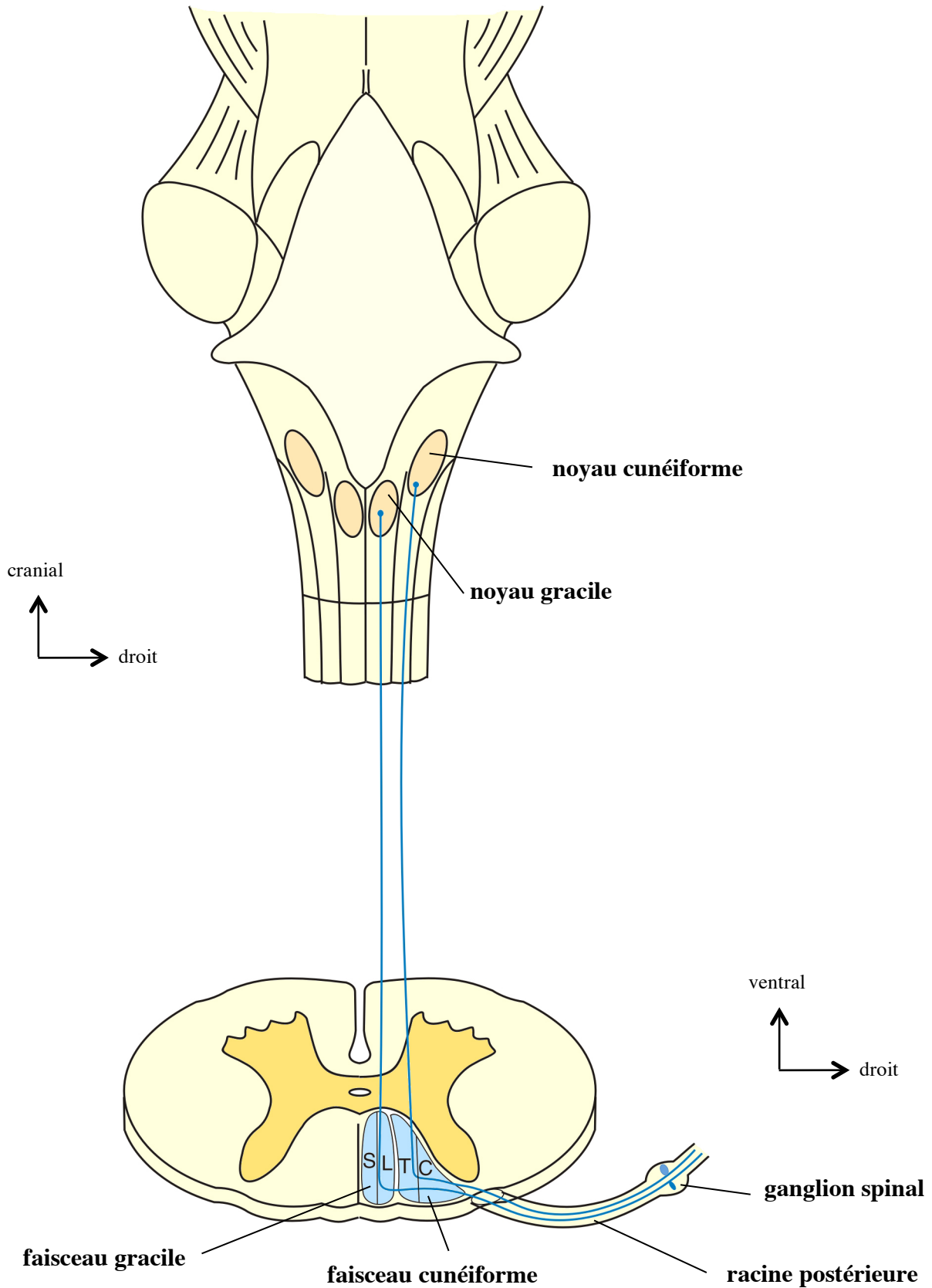


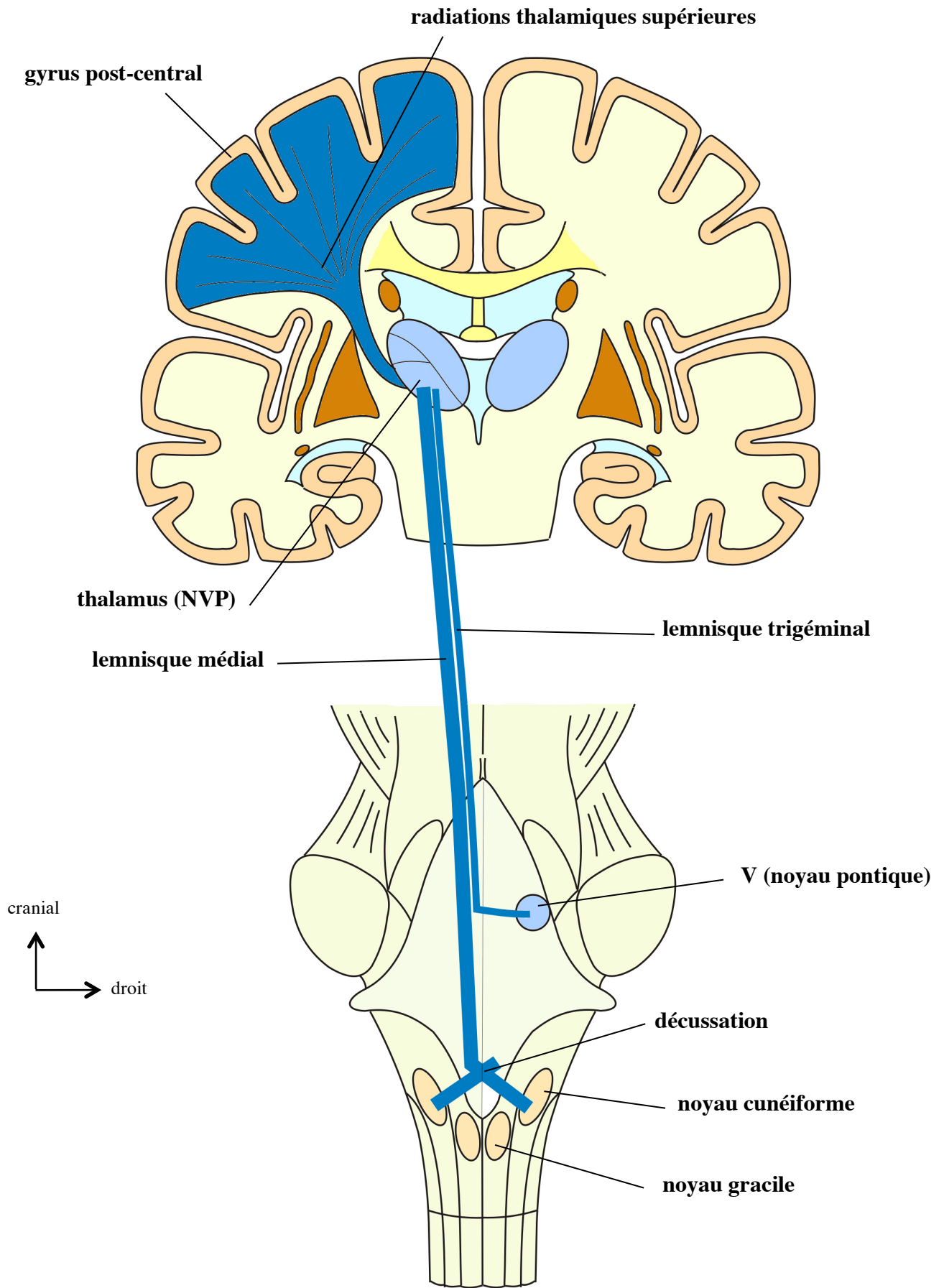
Schéma général des voies de la sensibilité consciente



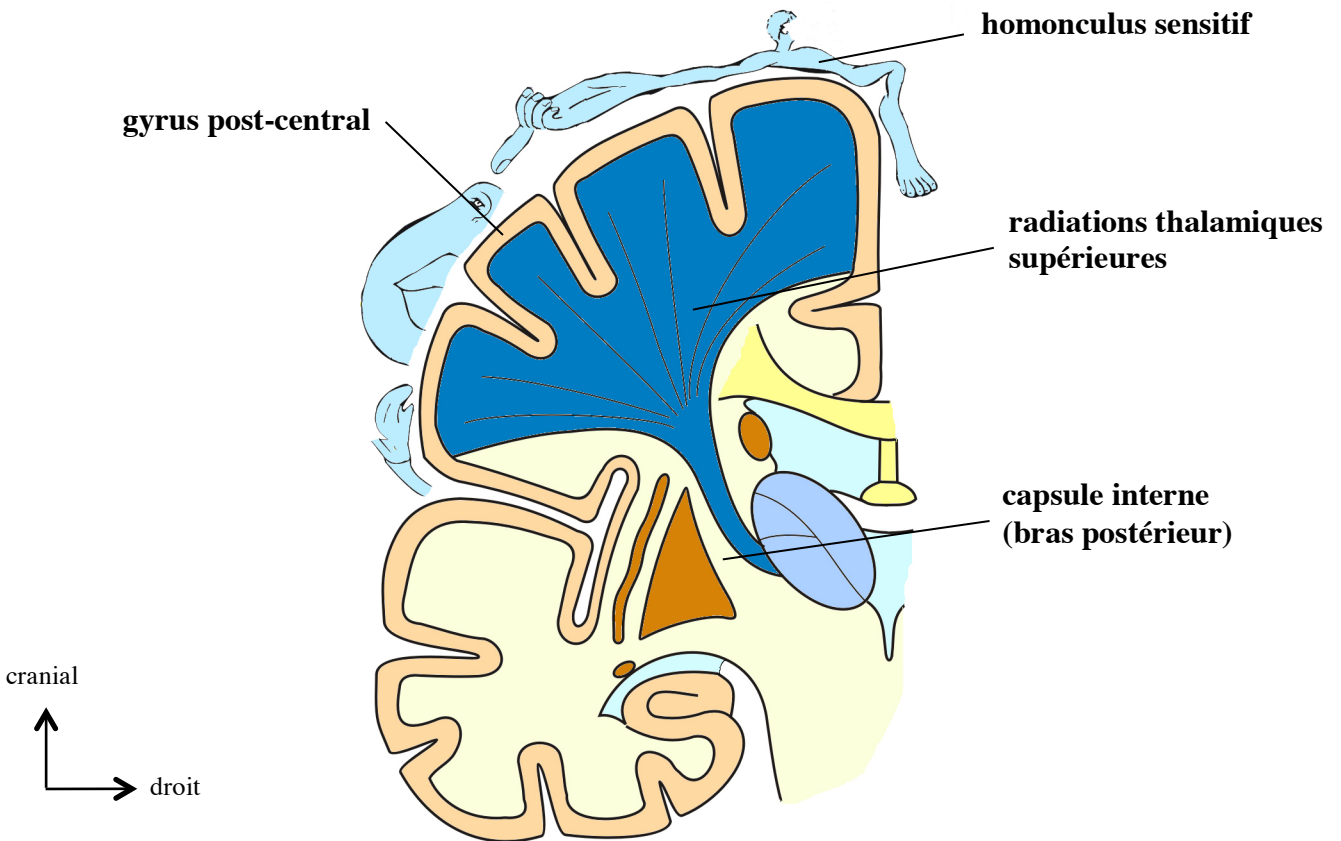
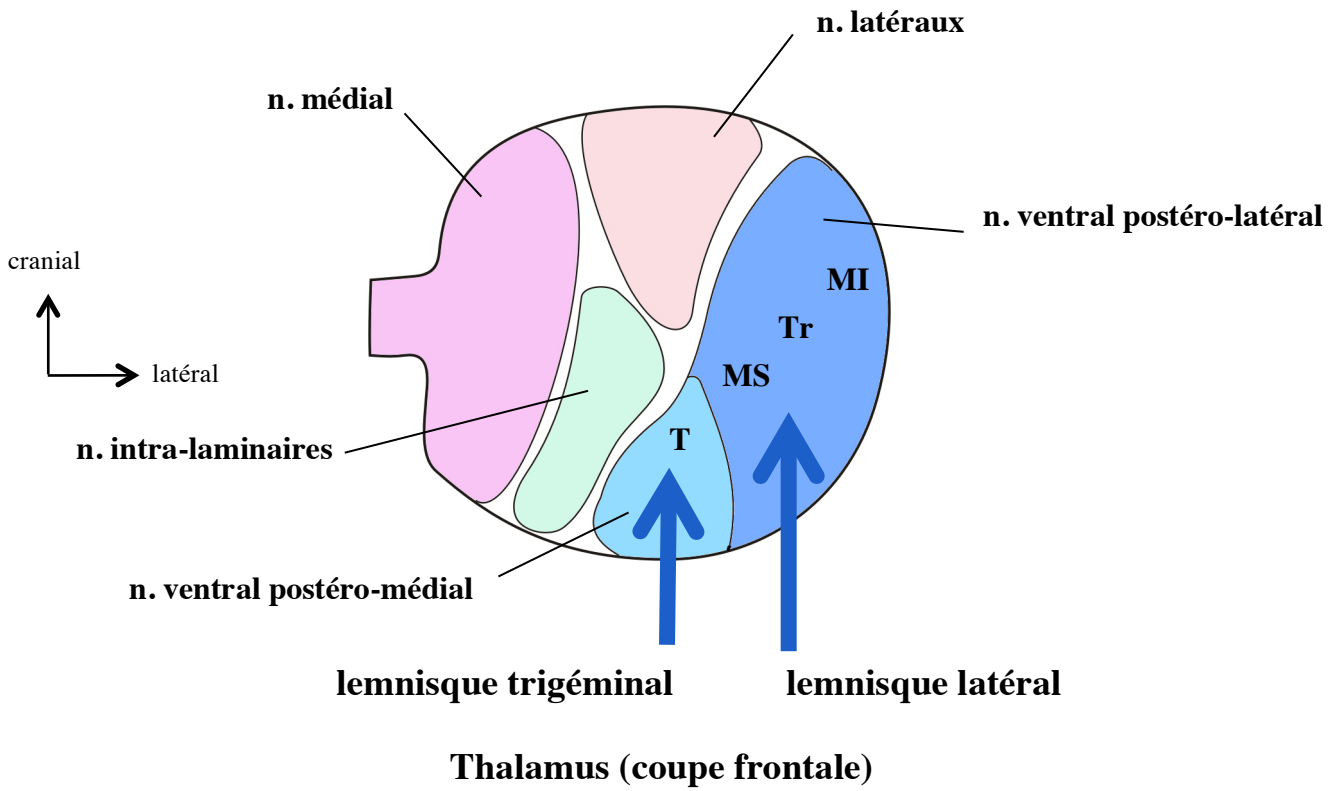
Les dermatomes



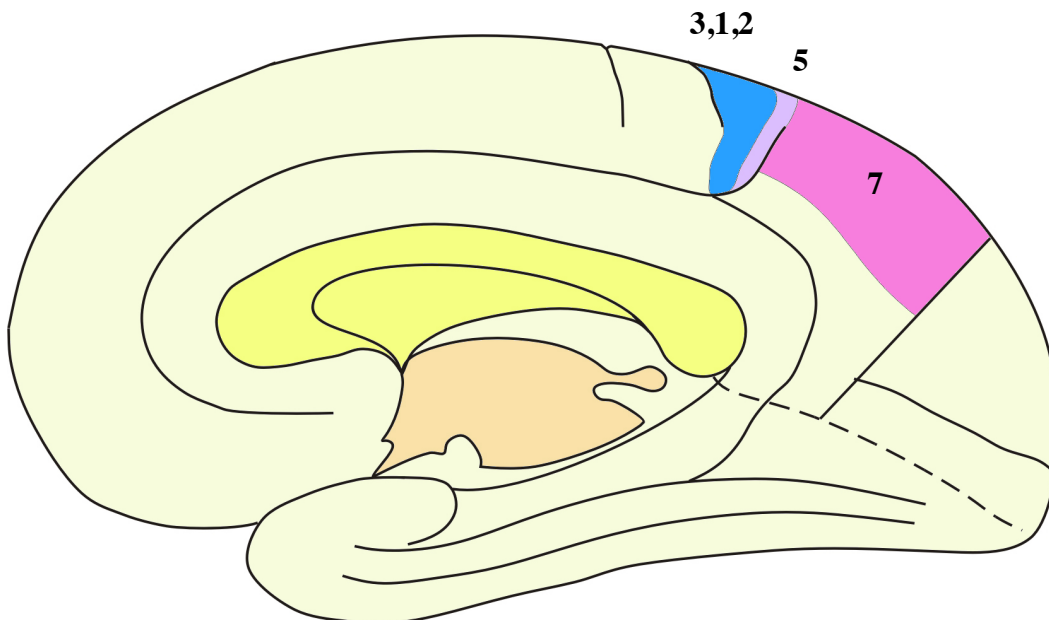
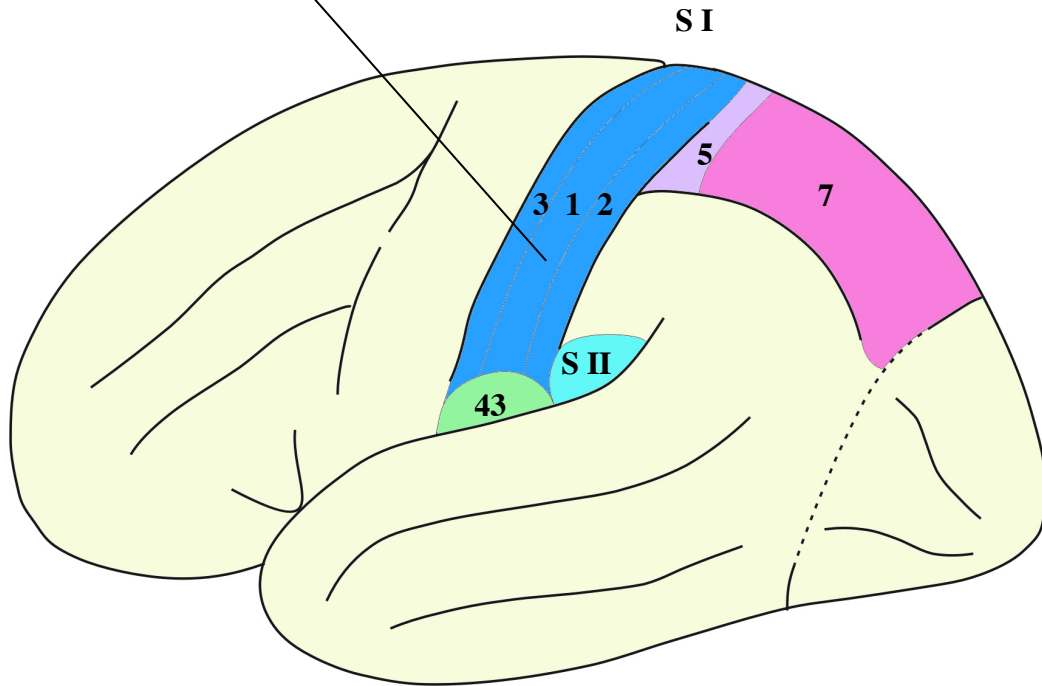
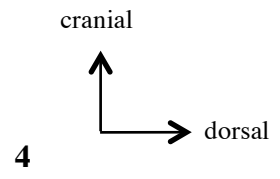
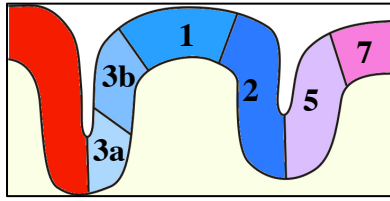
Tact épicrotique et sensibilité proprioceptive consciente (1^{er} neurone)



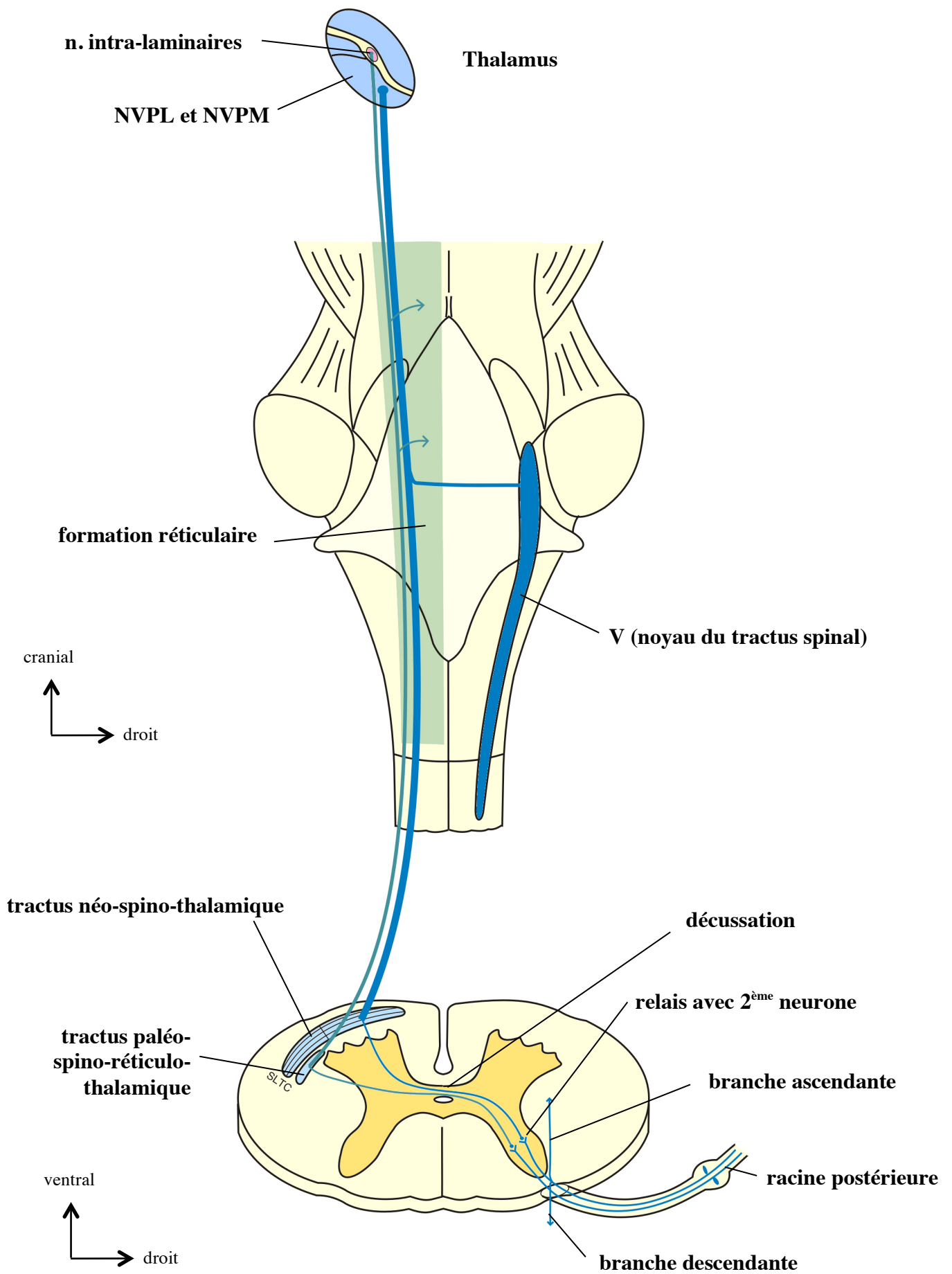
**Tact épiceritique et sensibilité proprioceptive consciente
(2^{ème} et 3^{ème} neurones)**



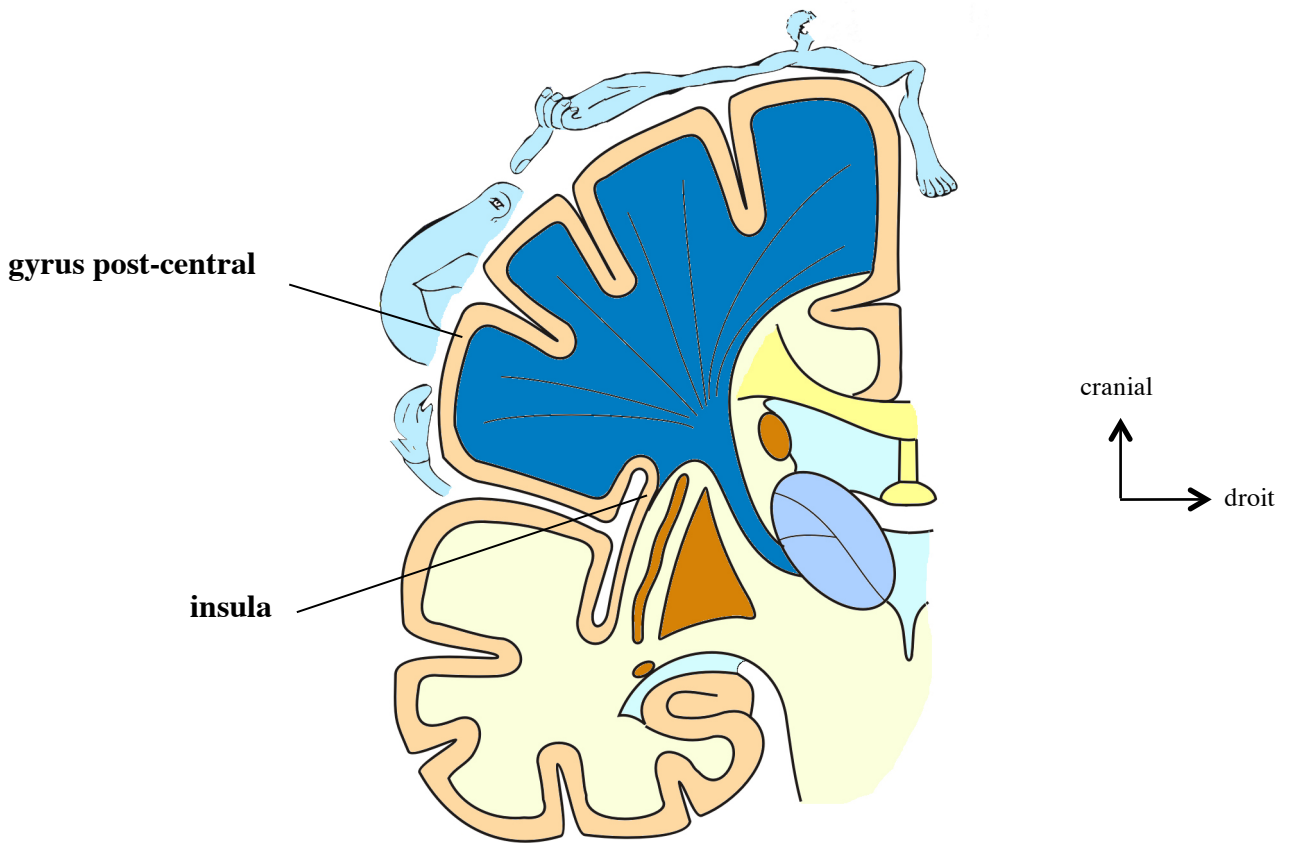
Les radiations thalamiques et le gyrus post-central



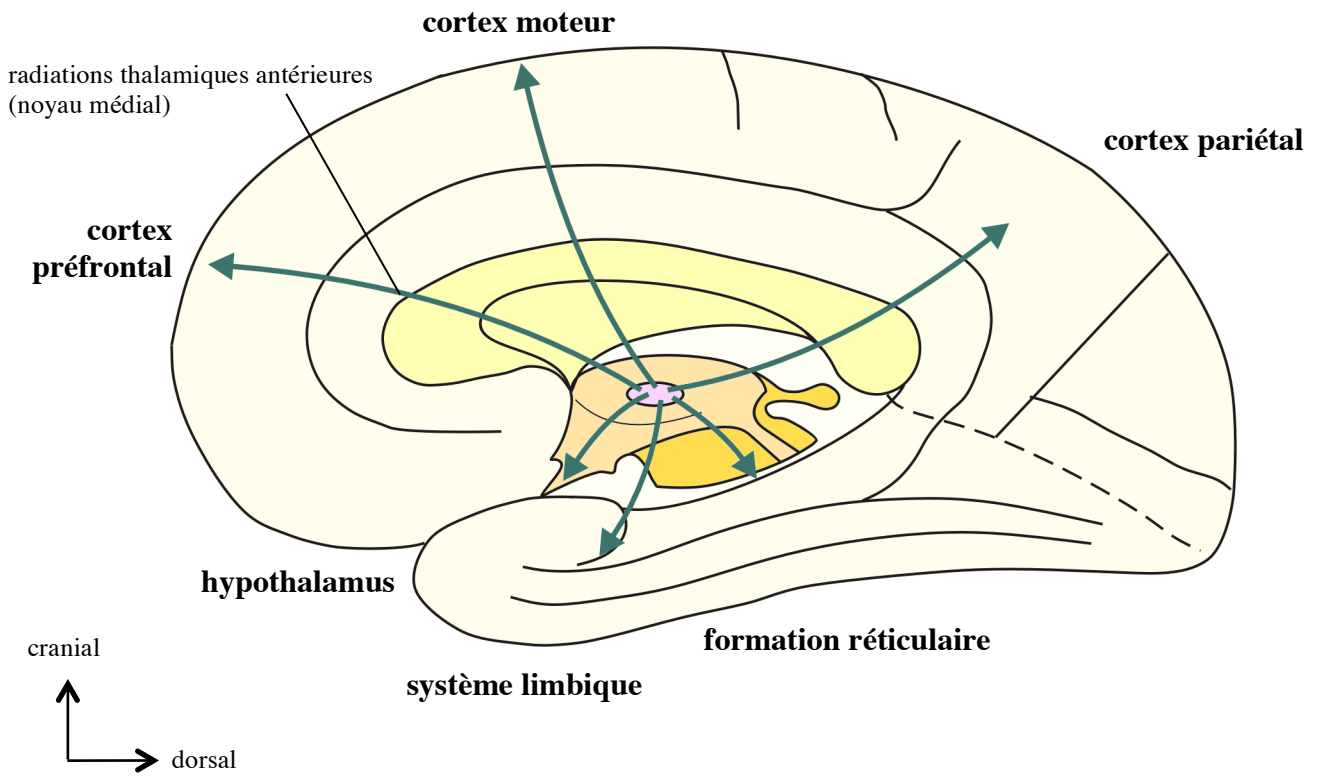
Les aires corticales somesthésiques



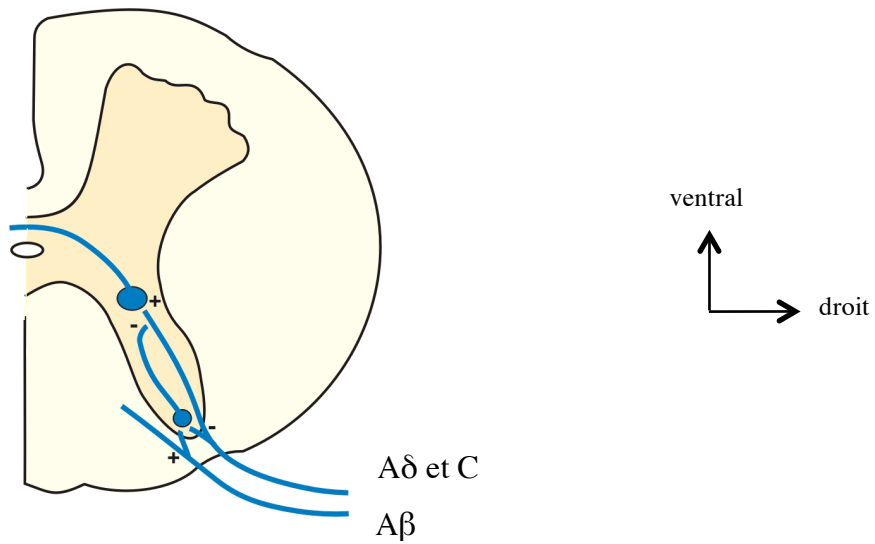
Voies de la sensibilité protopathique, nociceptive



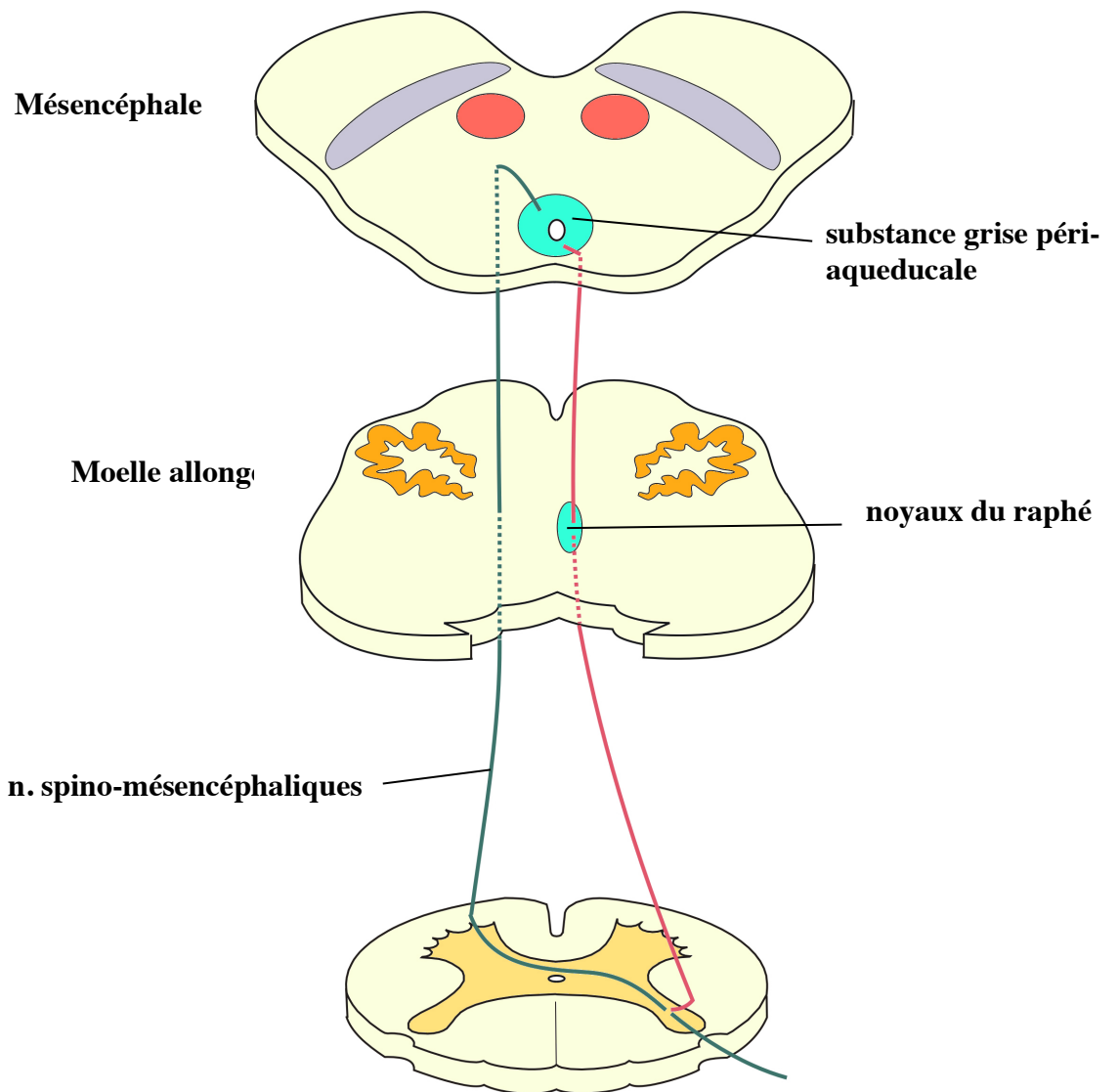
Projections corticales du tractus néo-spino-thalamique



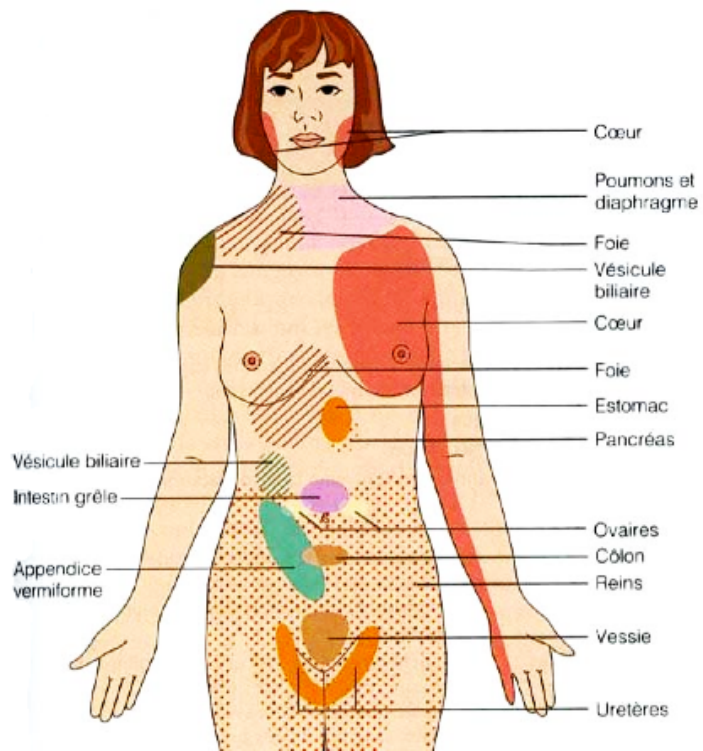
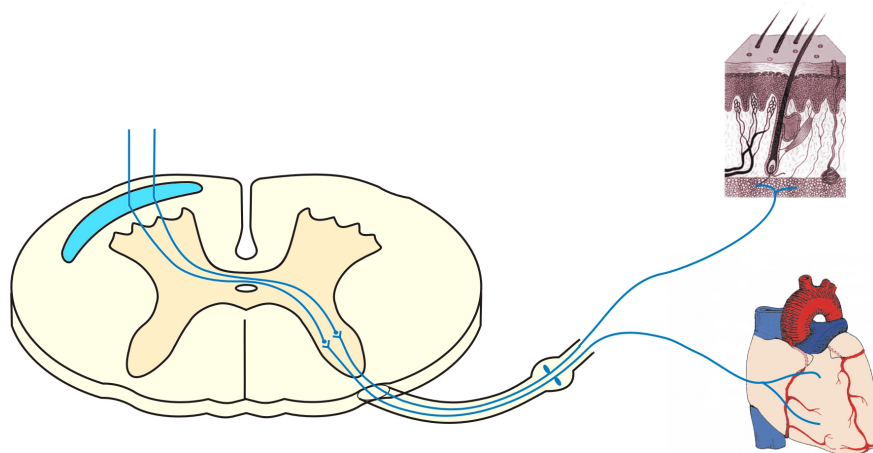
Projections des noyaux intra-laminaires du thalamus



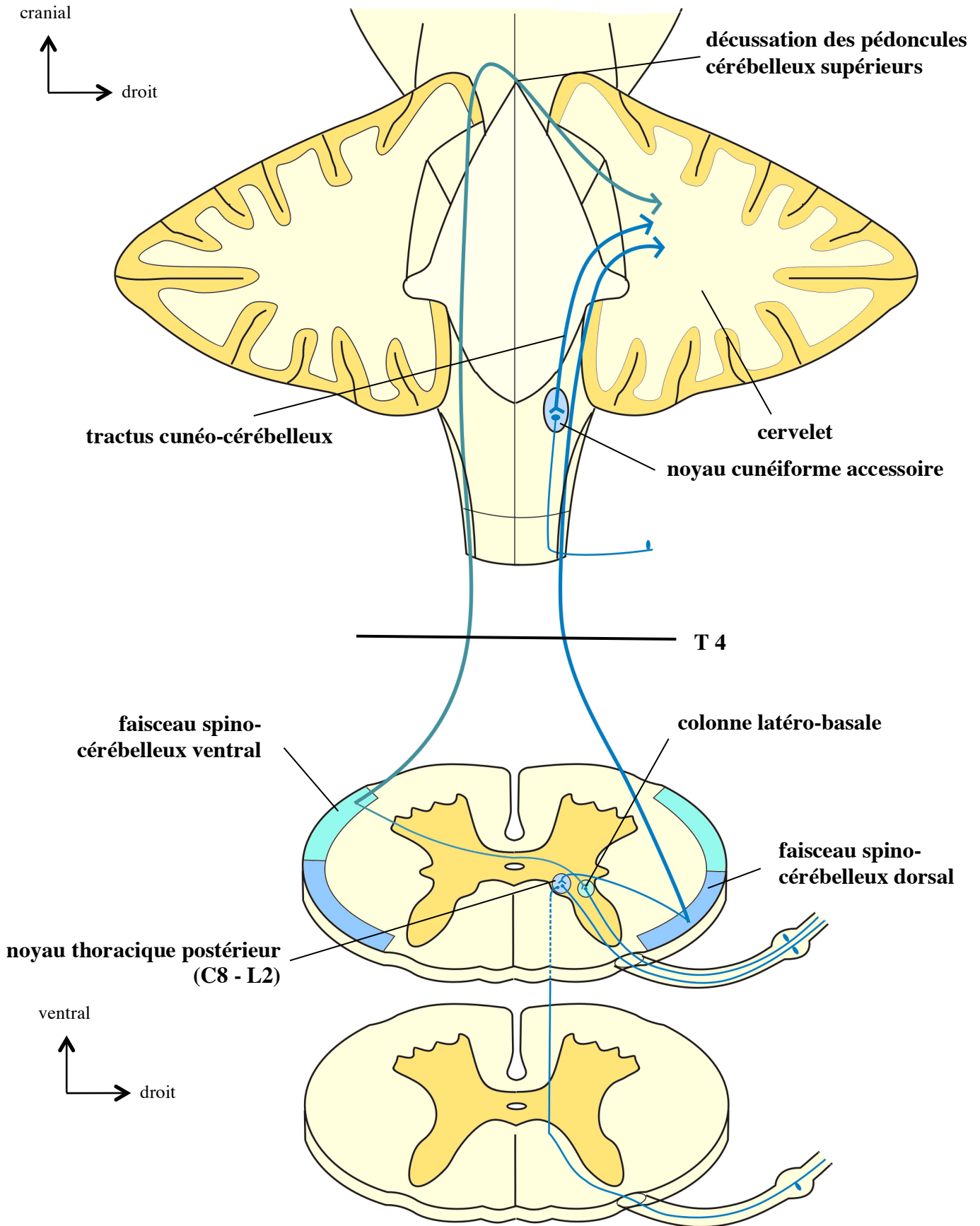
Le contrôle de la porte (gate control)



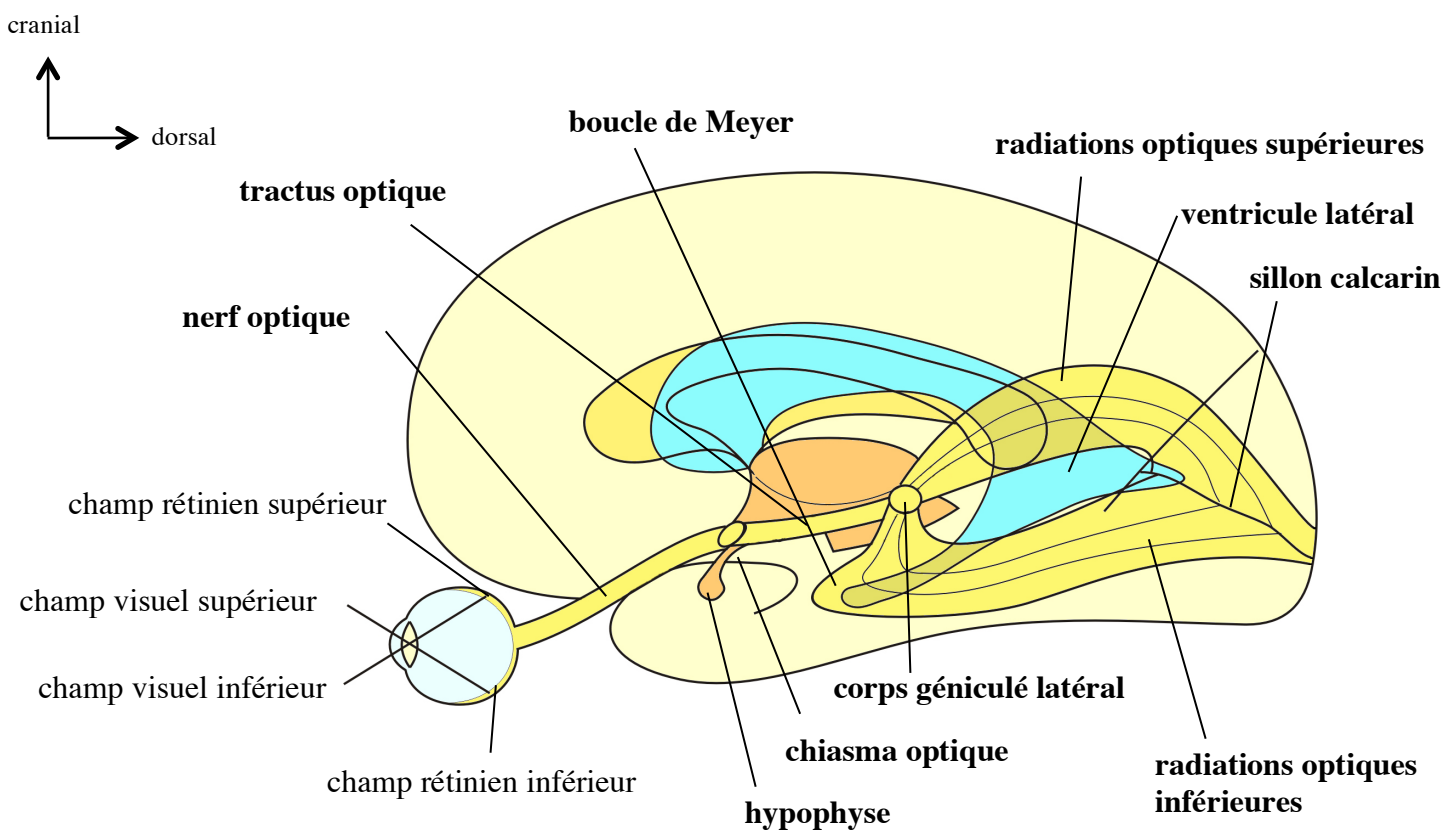
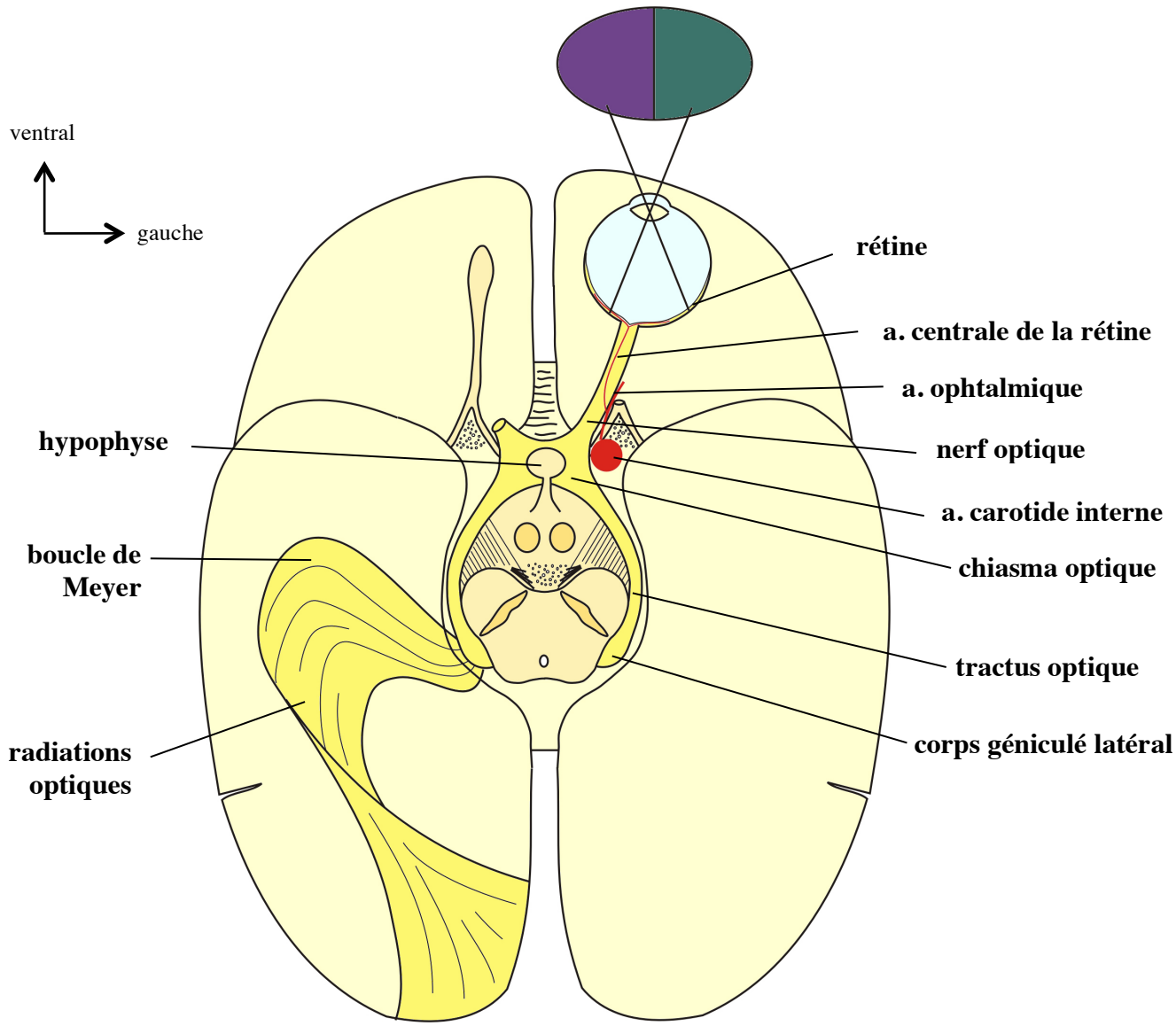
Le contrôle supra-segmentaire par la formation réticulaire



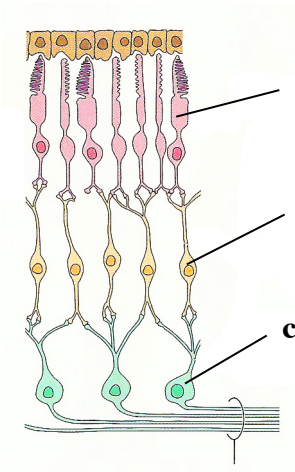
Les douleurs projetées



Les voies de la sensibilité proprioceptive inconsciente



Les voies visuelles



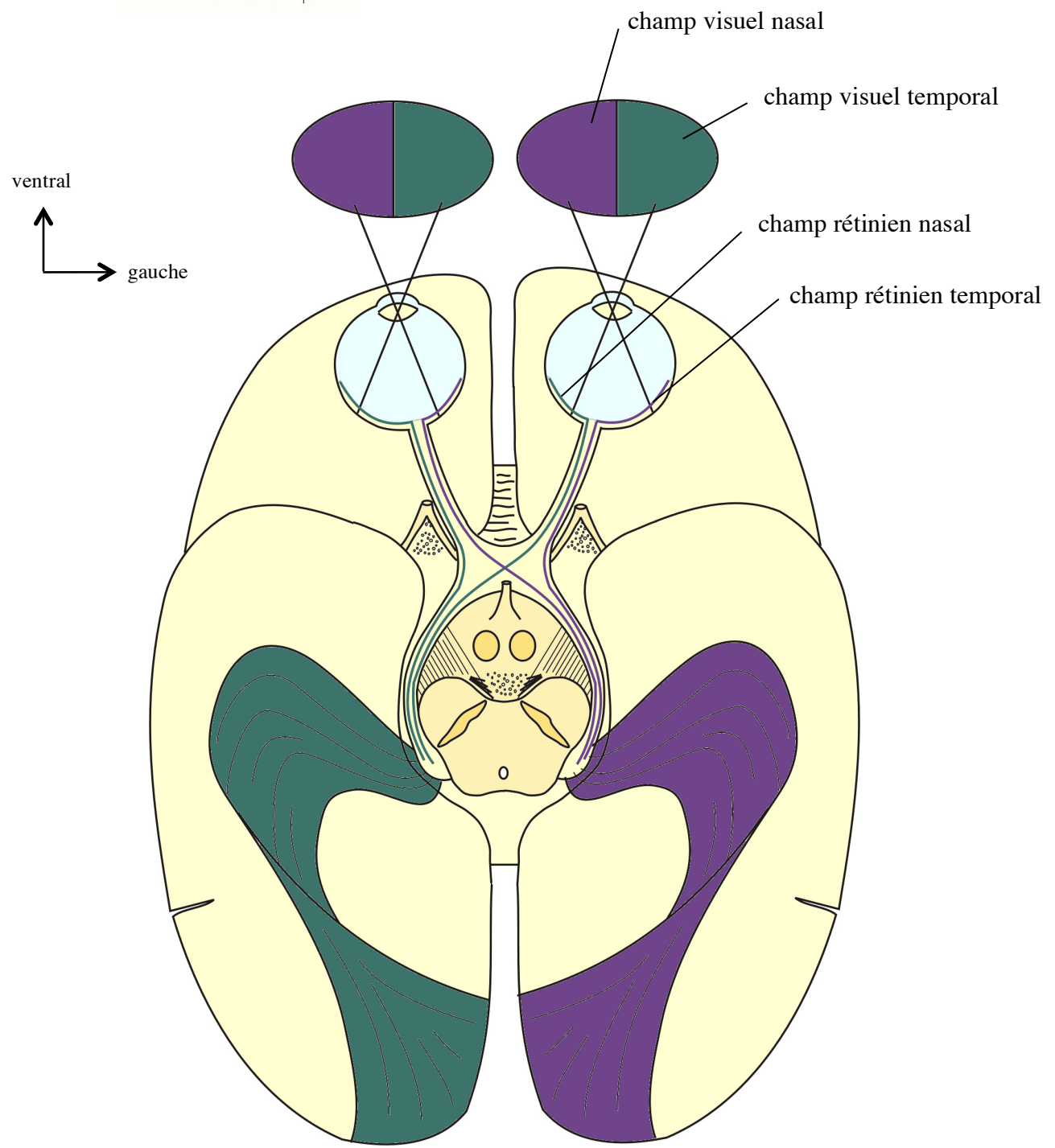
cônes et bâtonnets

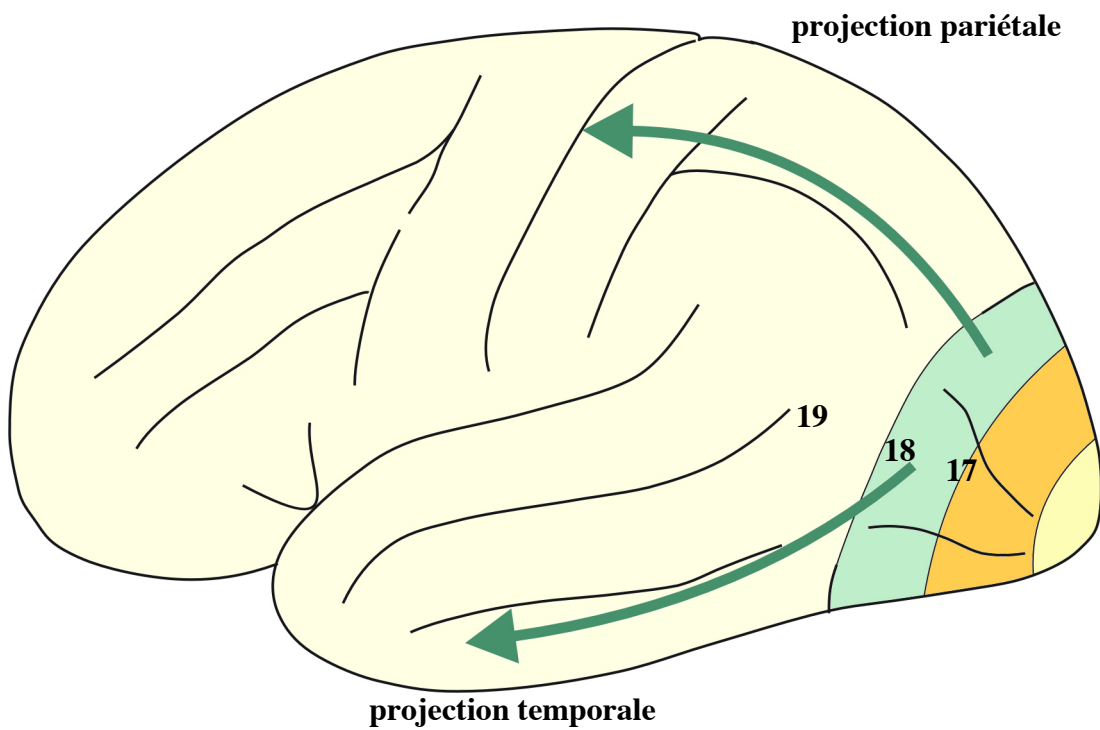
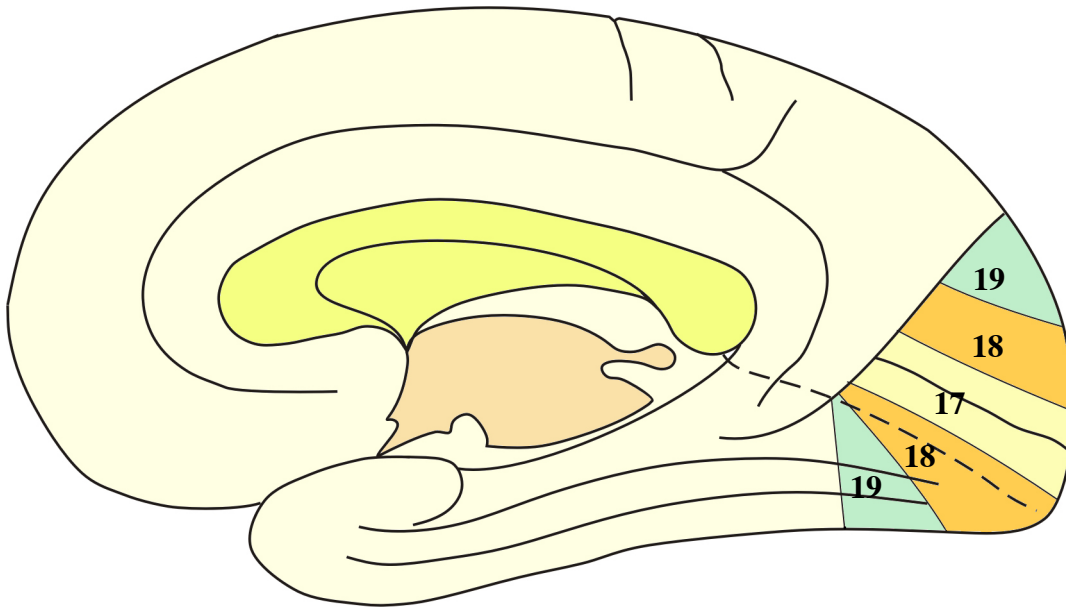
neurone bipolaire

cellule ganglionnaire

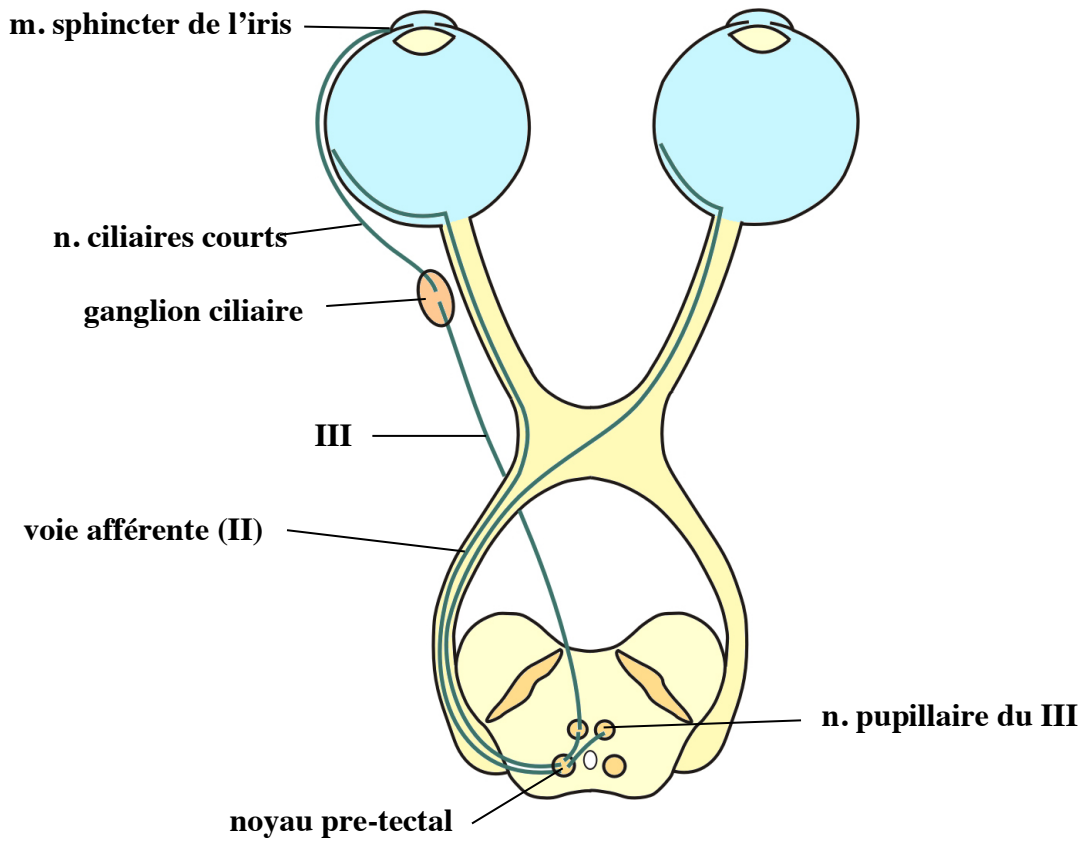
nerf optique

La rétine

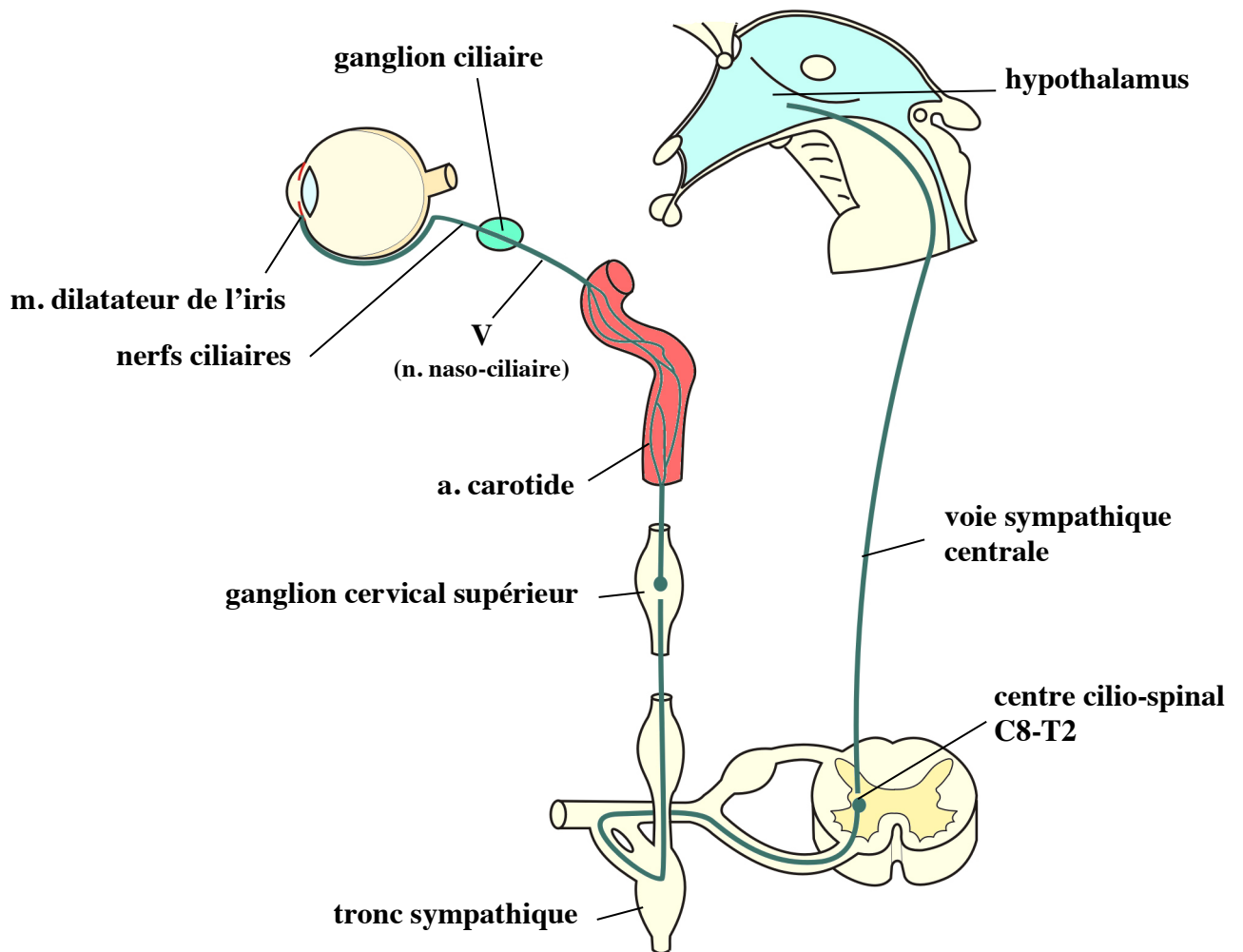




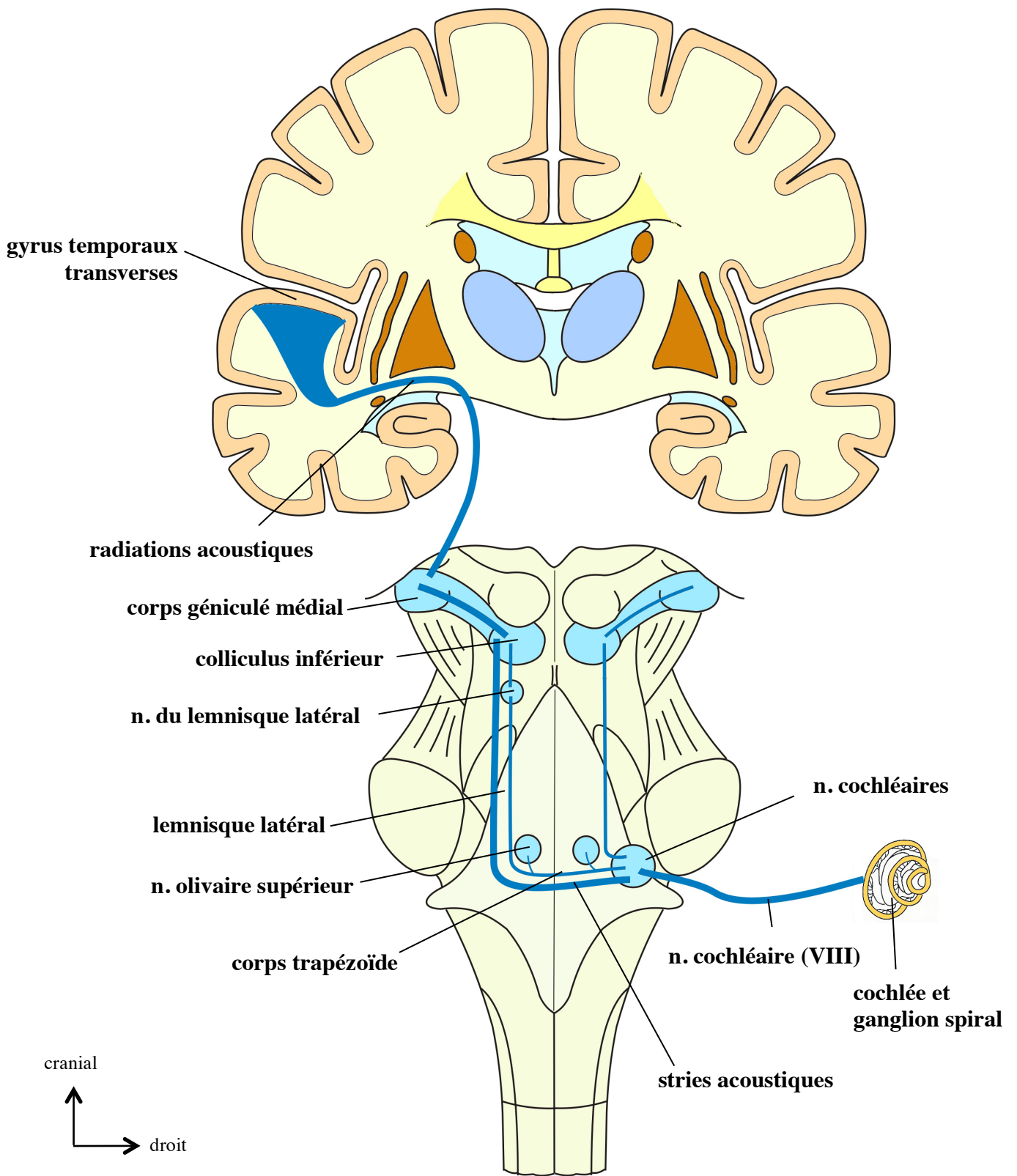
Les aires corticales visuelles



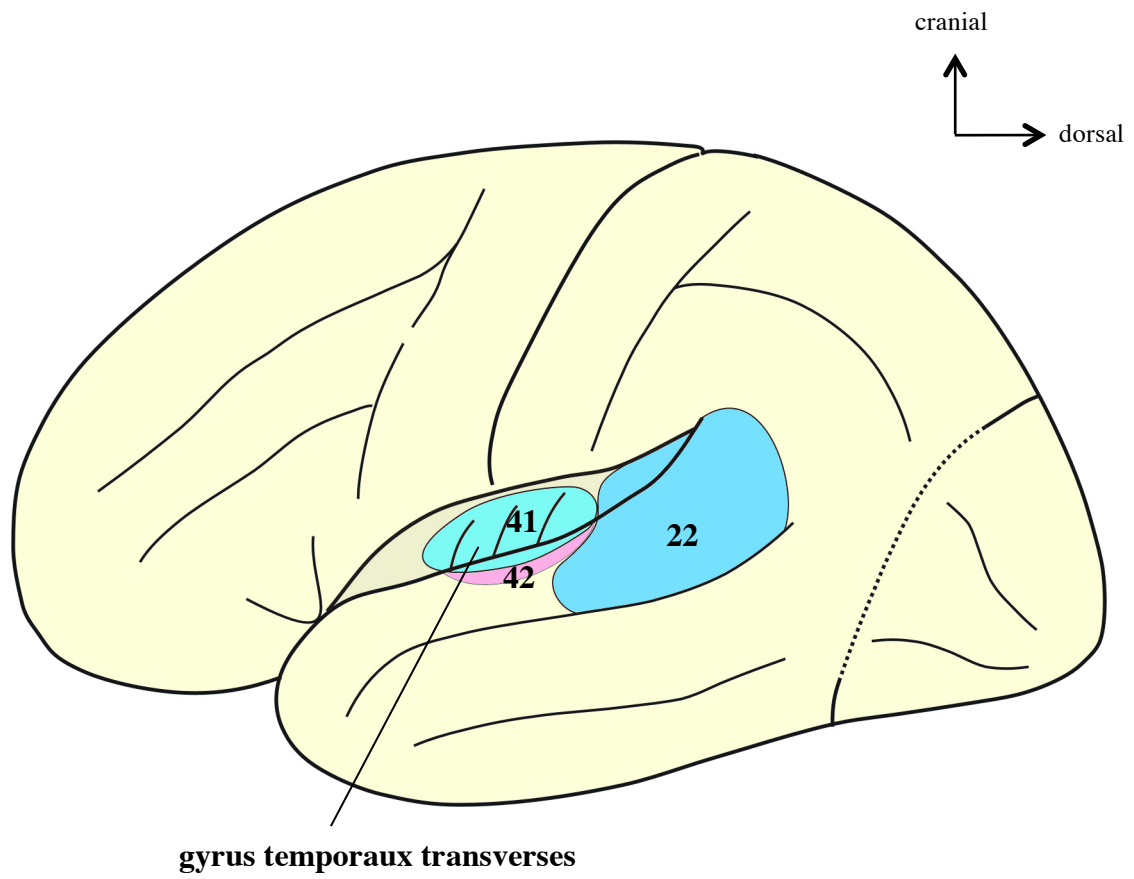
Iridoconstriction (réflexe photomoteur)



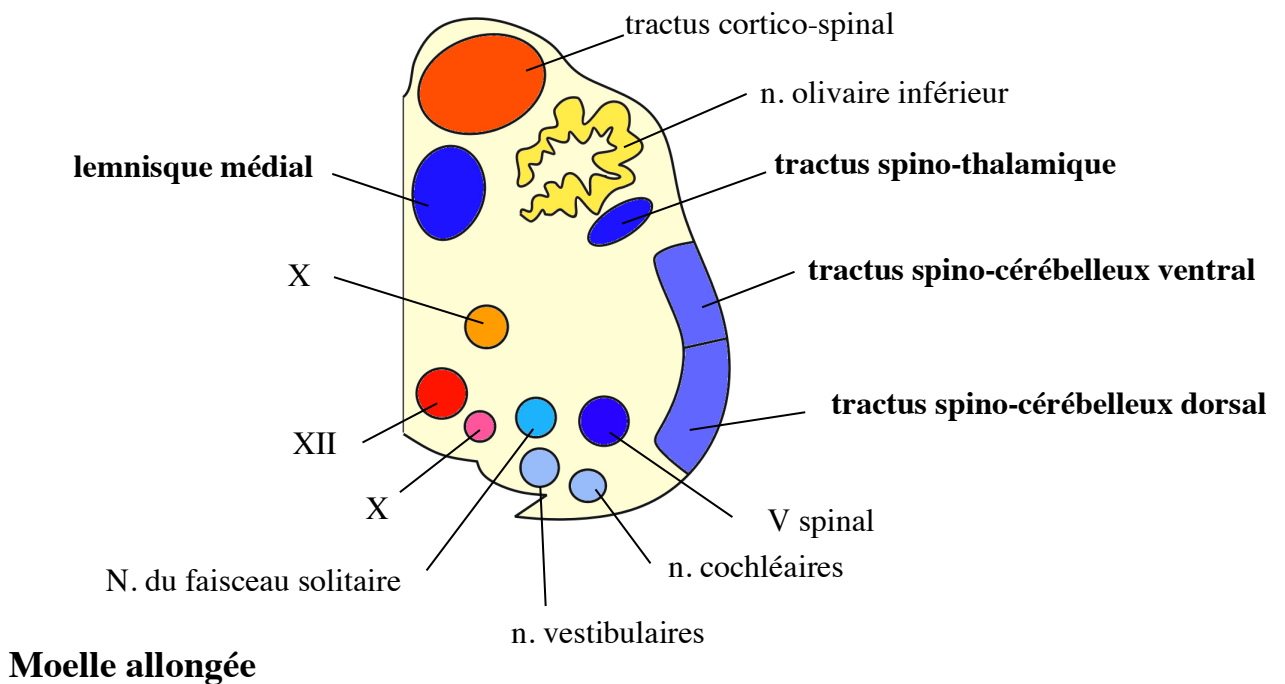
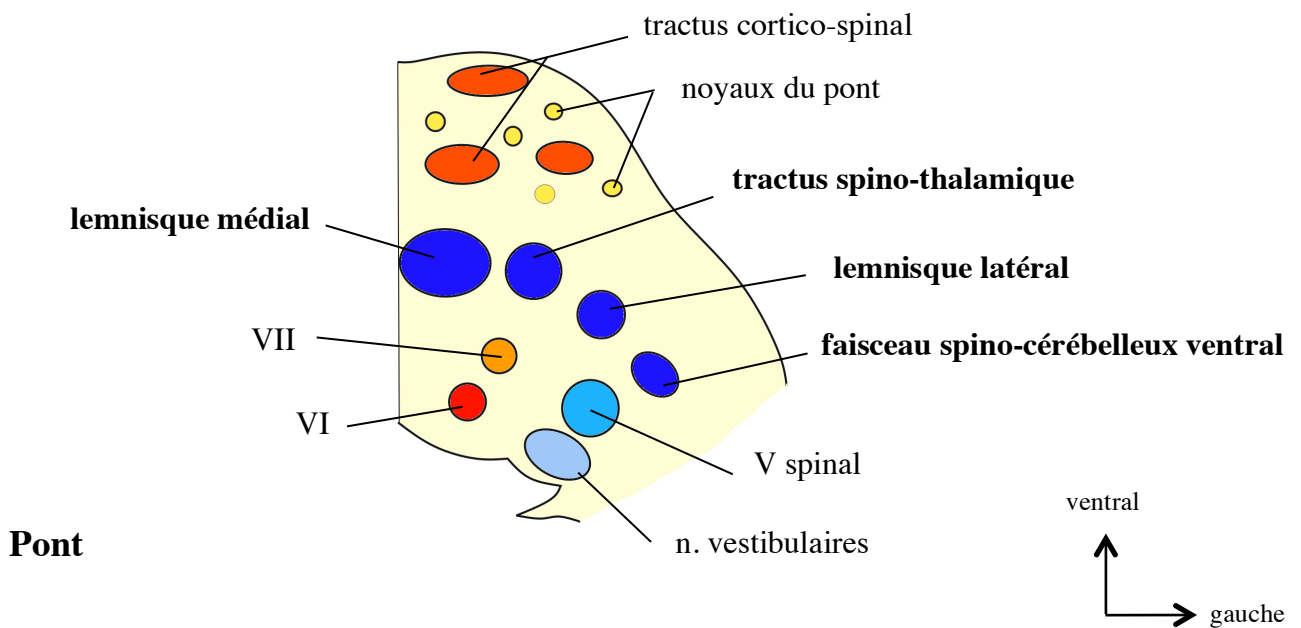
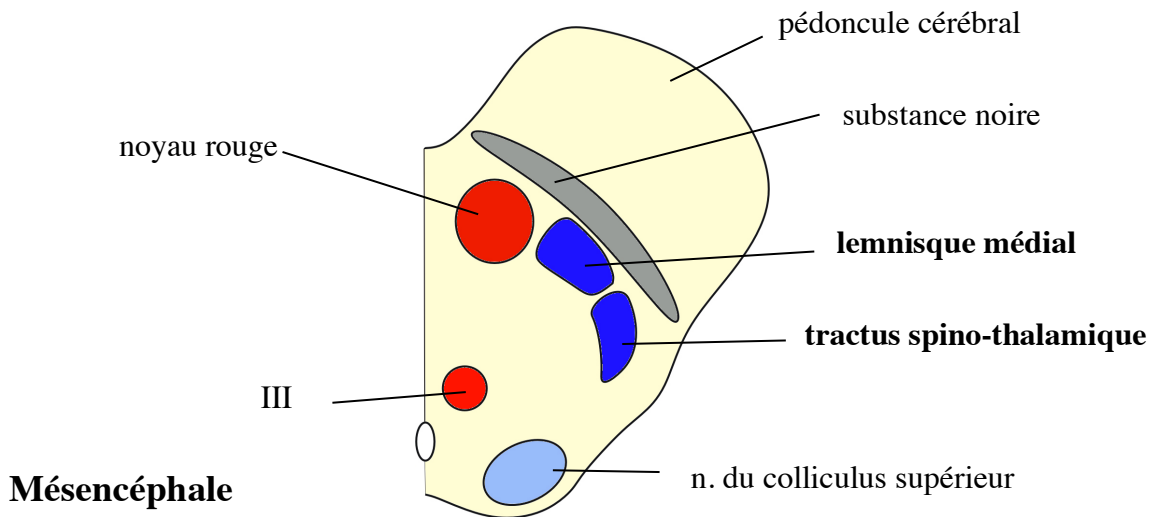
Irido-dilatation



Les voies auditives

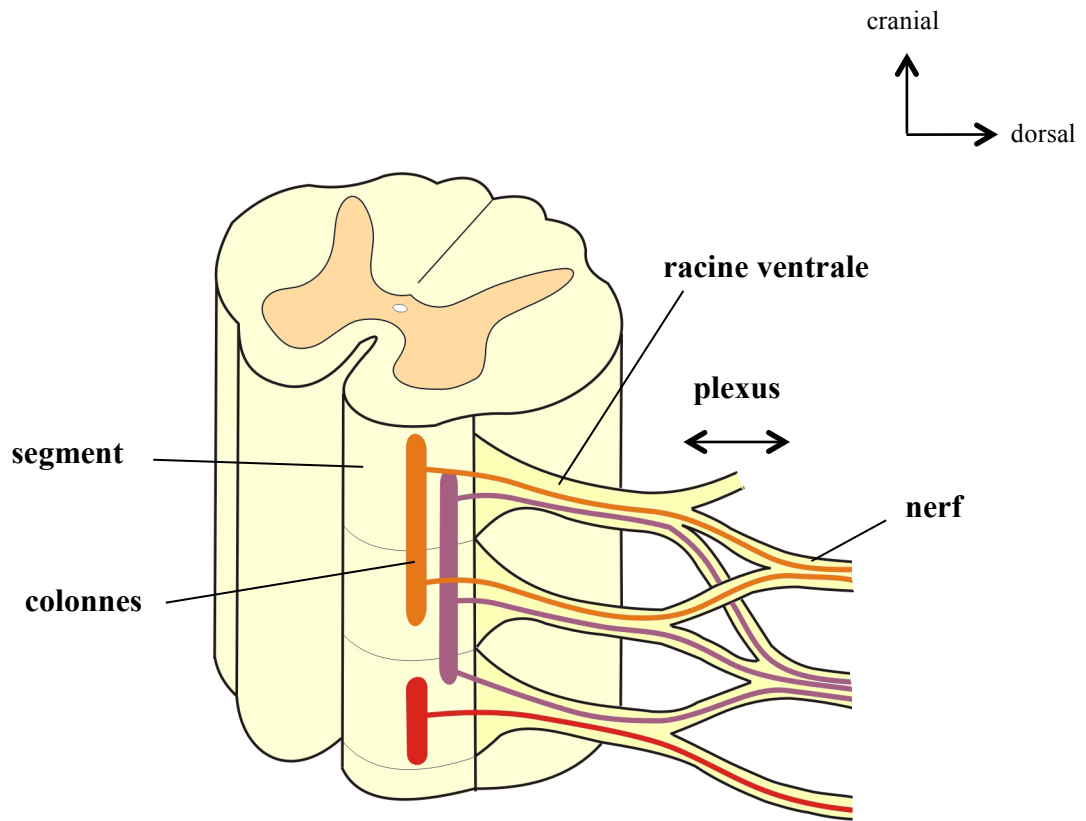


Les aires corticales auditives

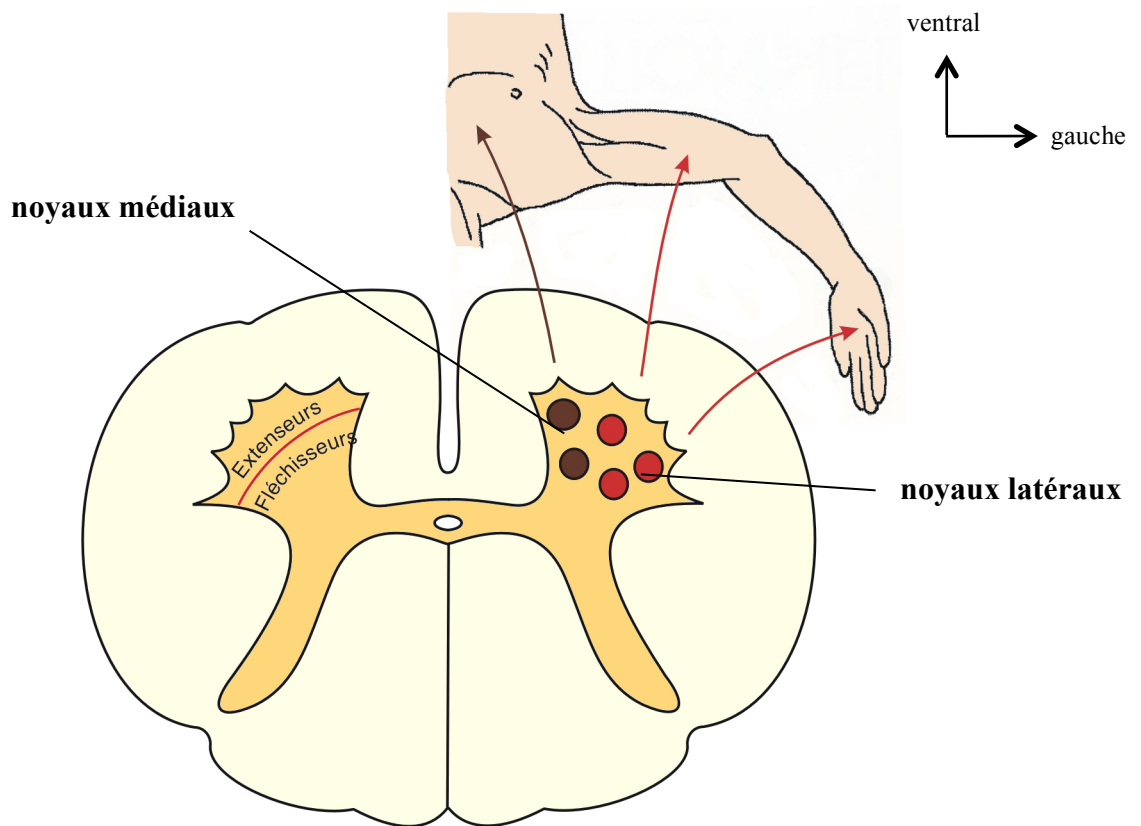


Voies de la sensibilité sur coupes du tronc cérébral

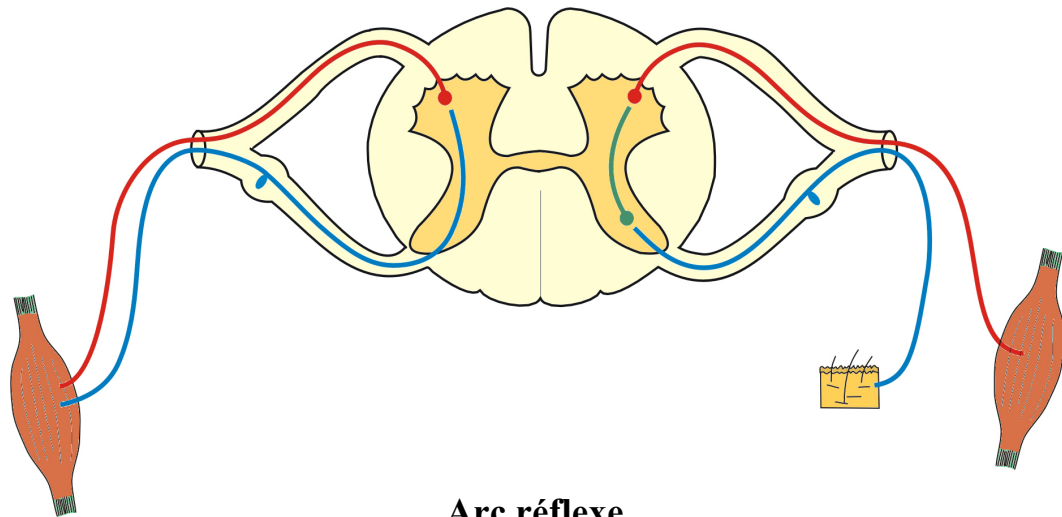
LES VOIES DE LA MOTRICITÉ



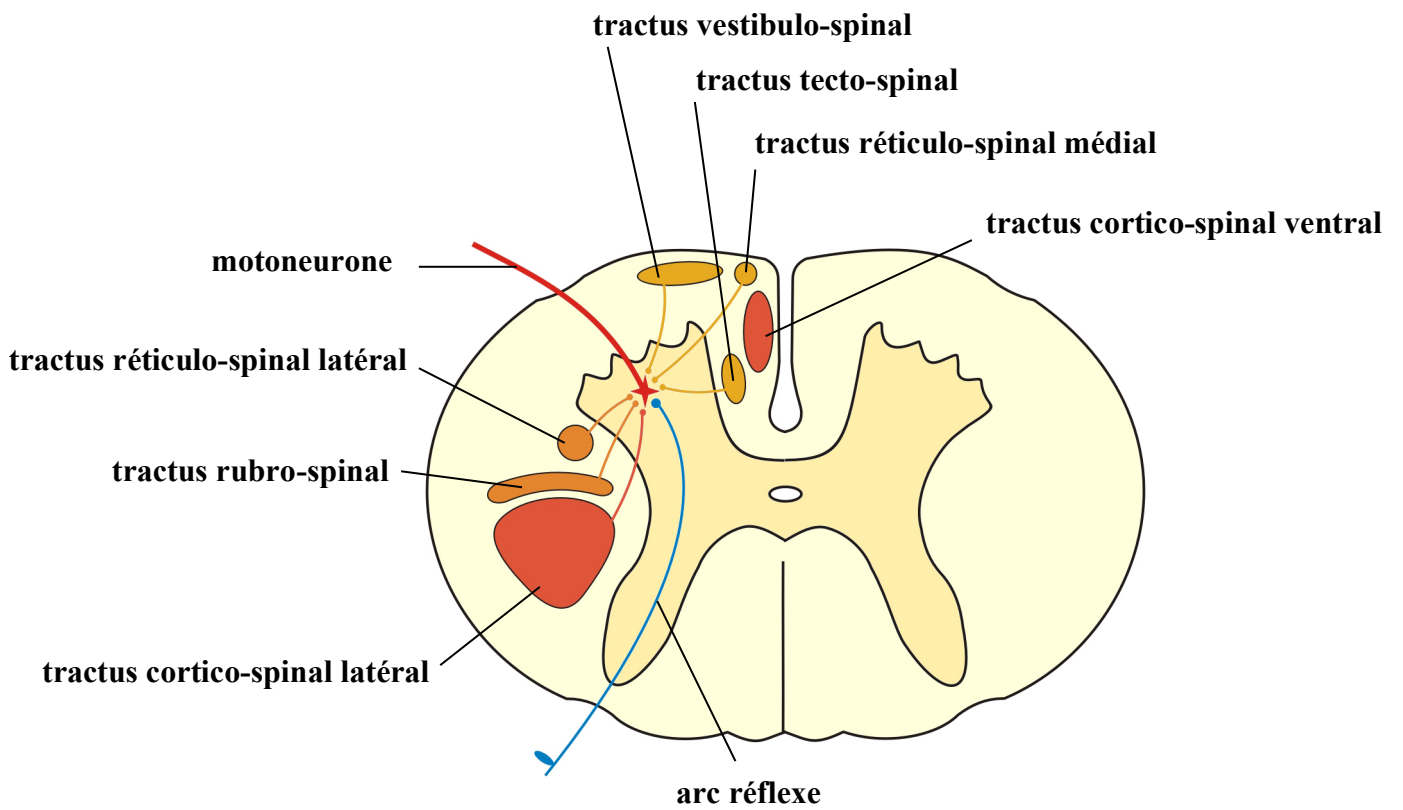
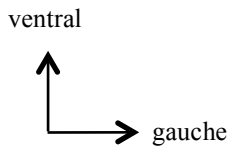
La corne ventrale. Les colonnes motrices



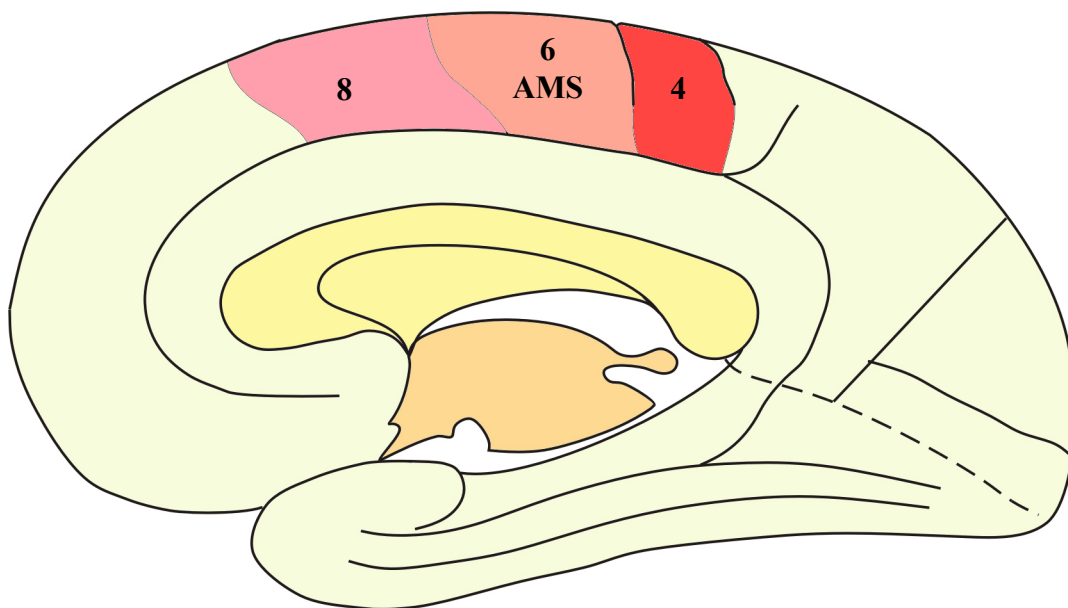
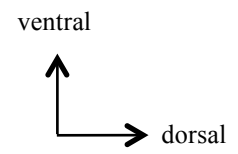
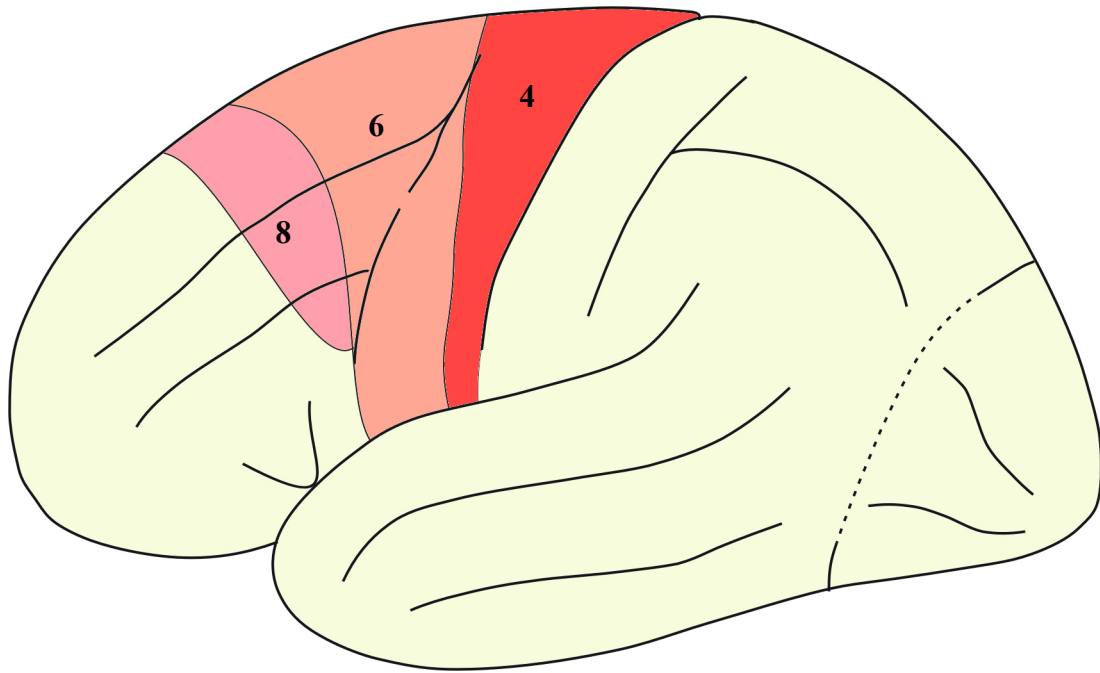
Somatotopie des noyaux de la corne ventrale



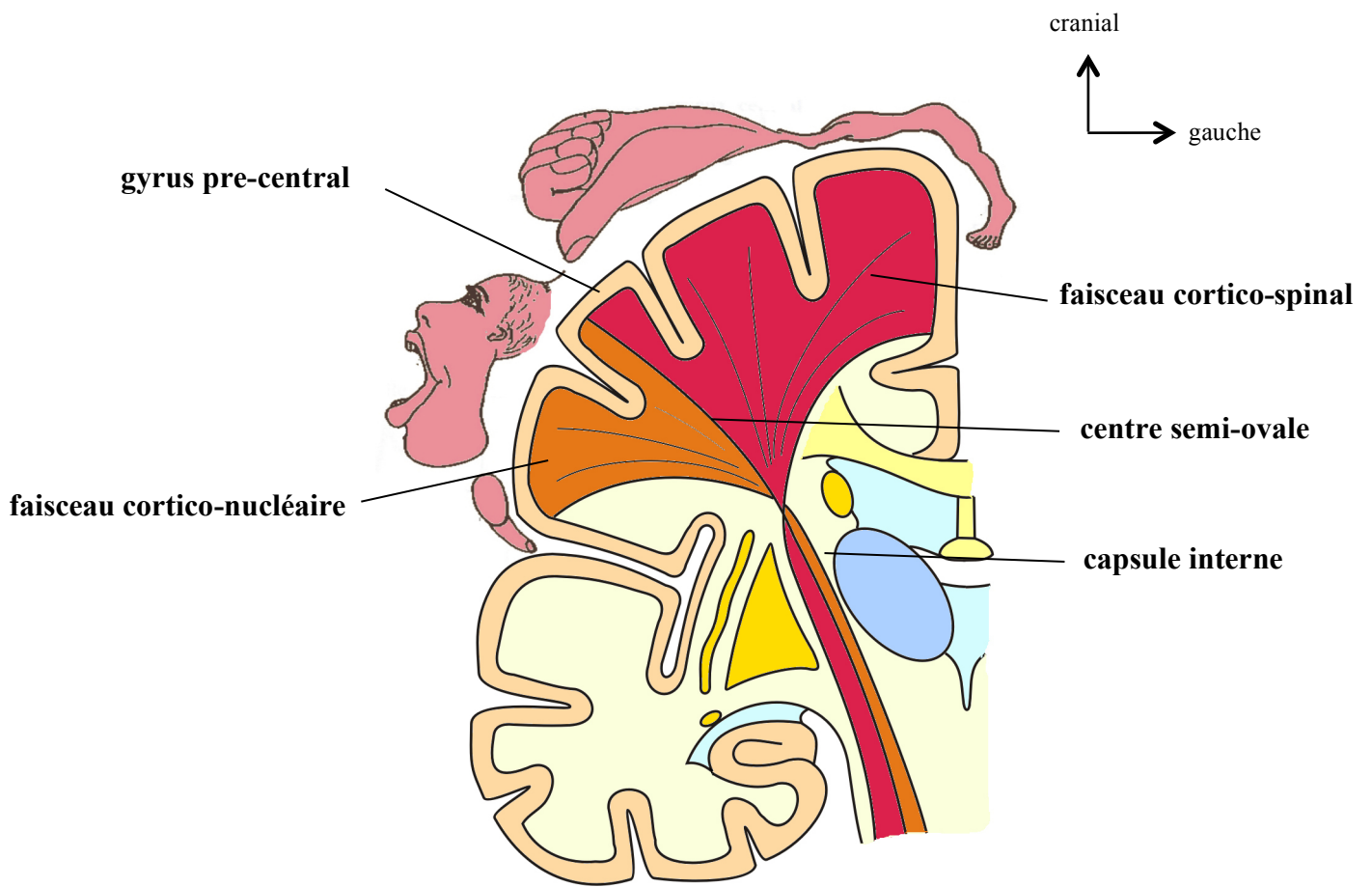
Arc réflexe
(réflexe proprioceptif à gauche et extéroceptif à droite)



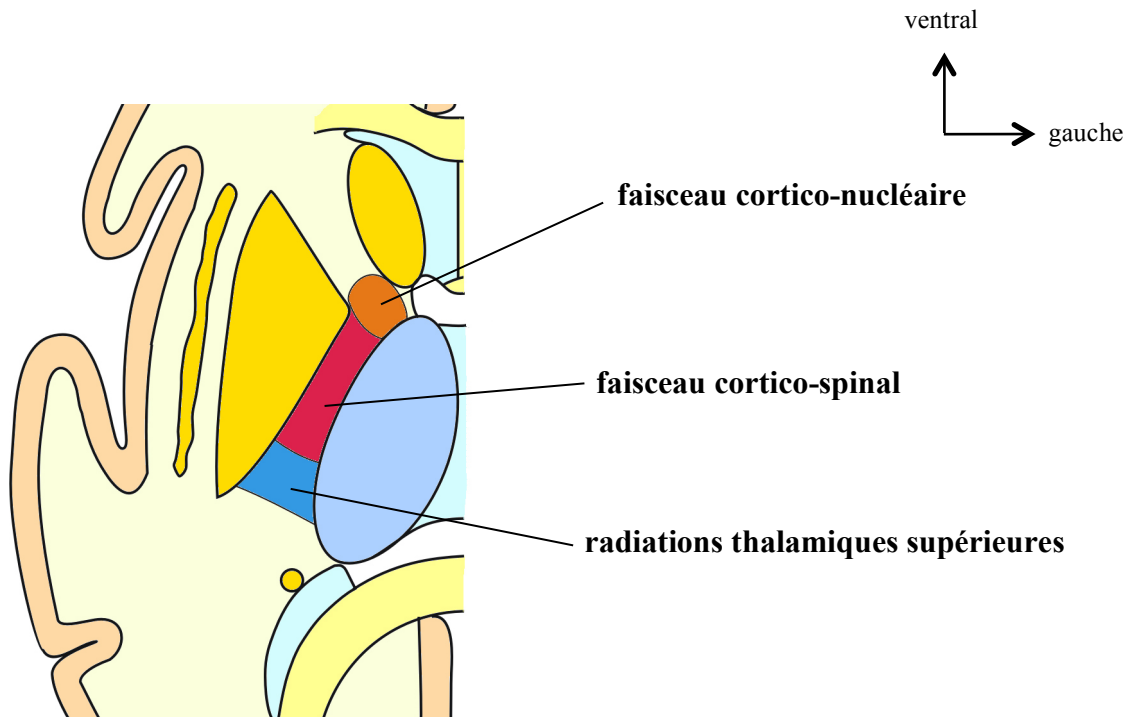
La voie finale commune



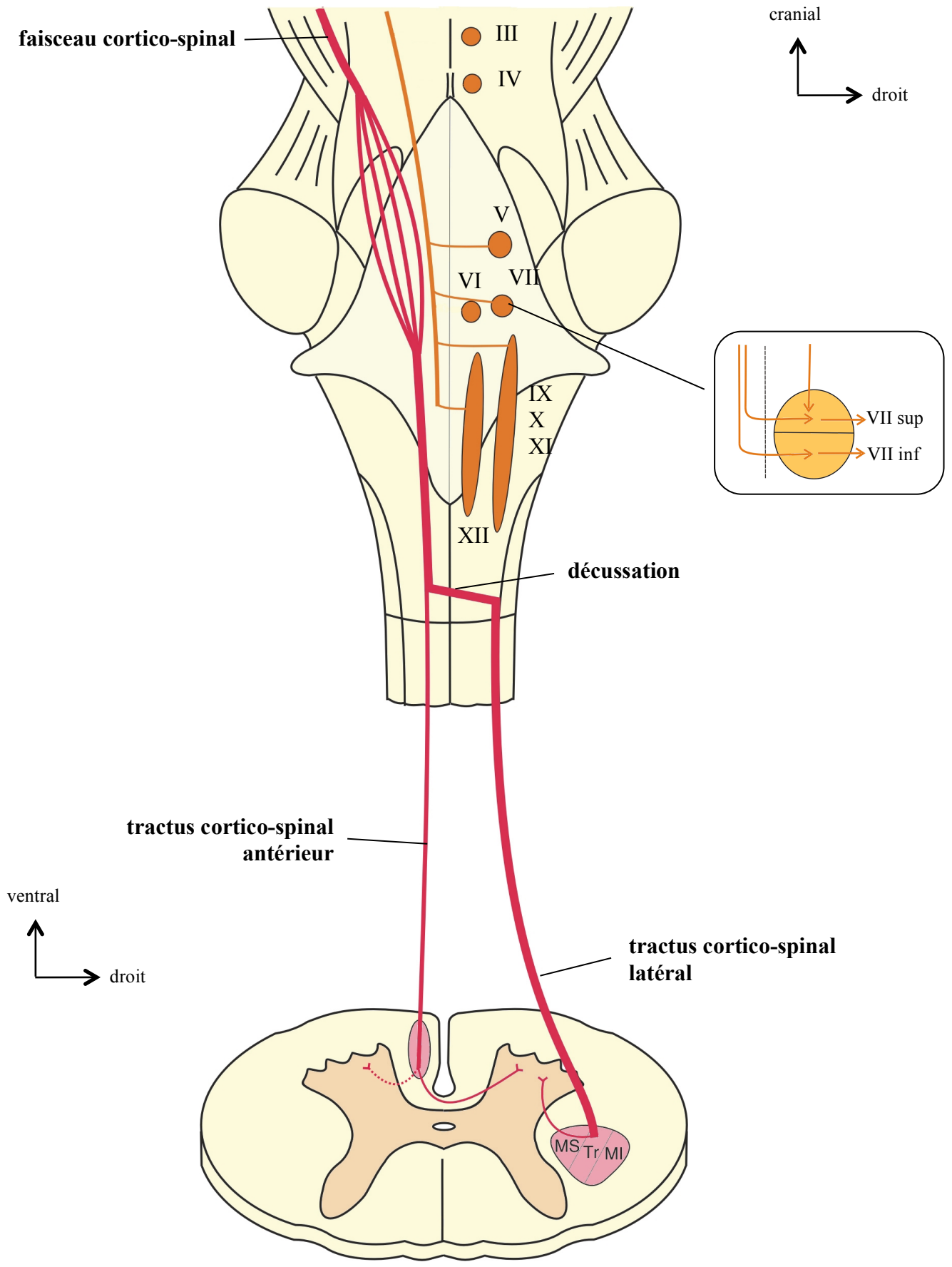
Le cortex moteur et le cortex premoteur



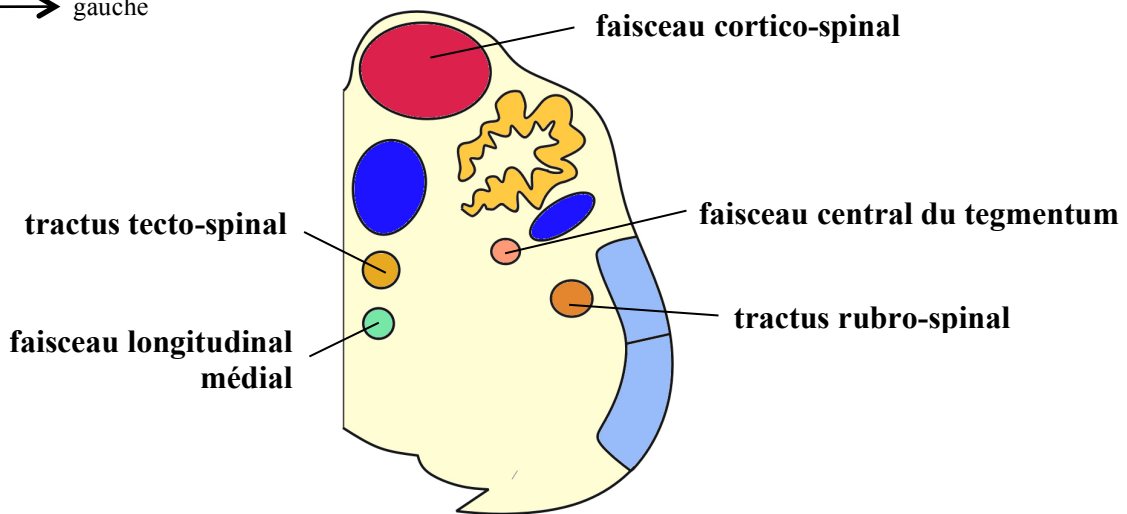
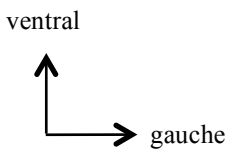
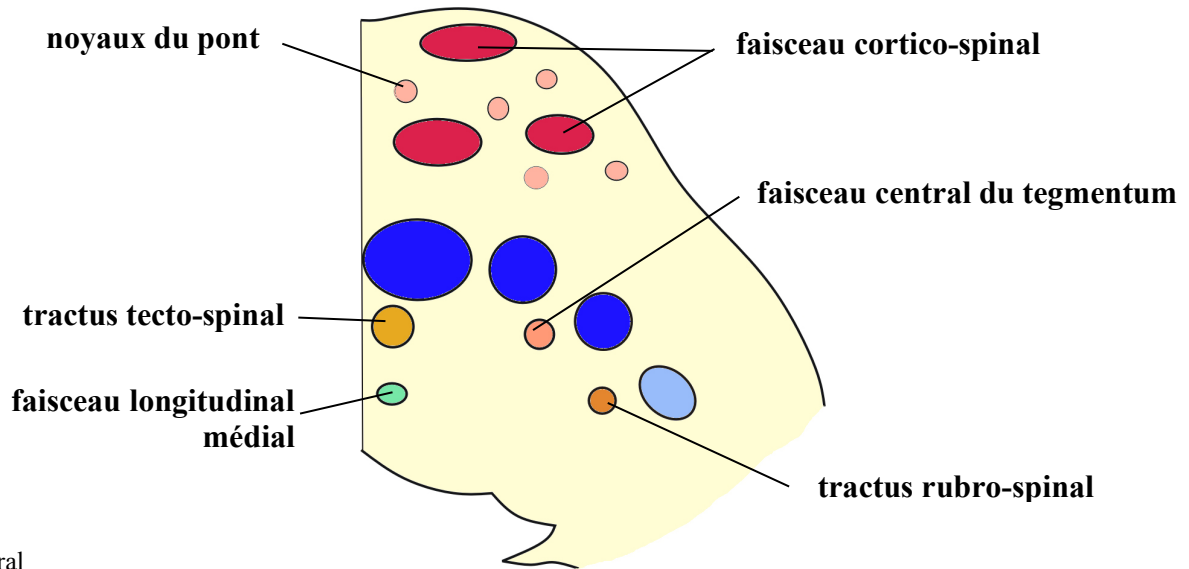
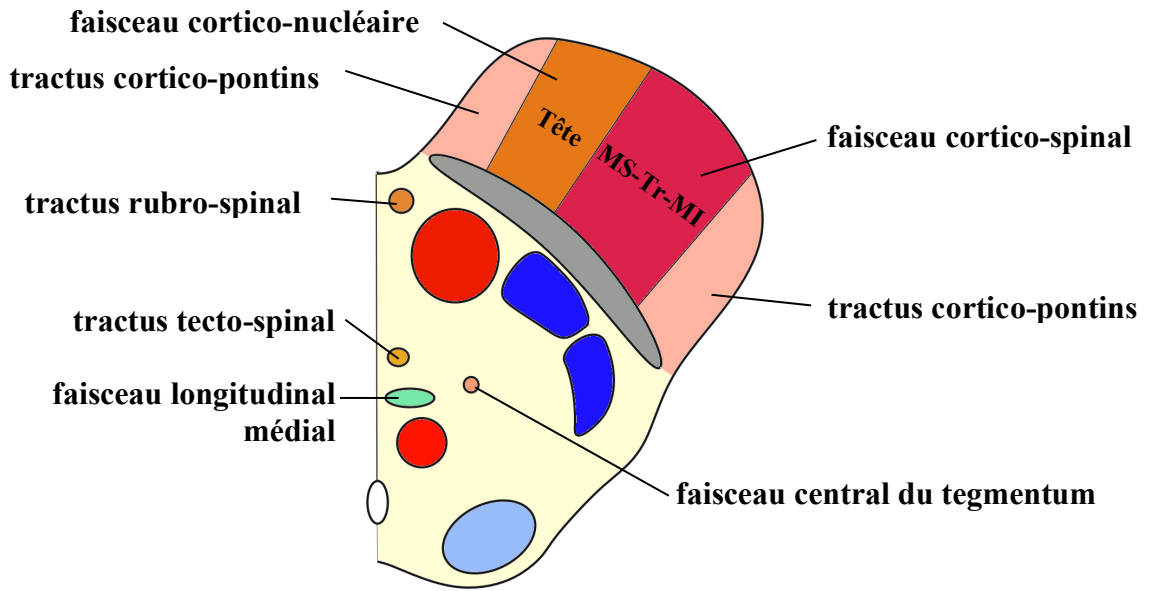
Le tractus pyramidal



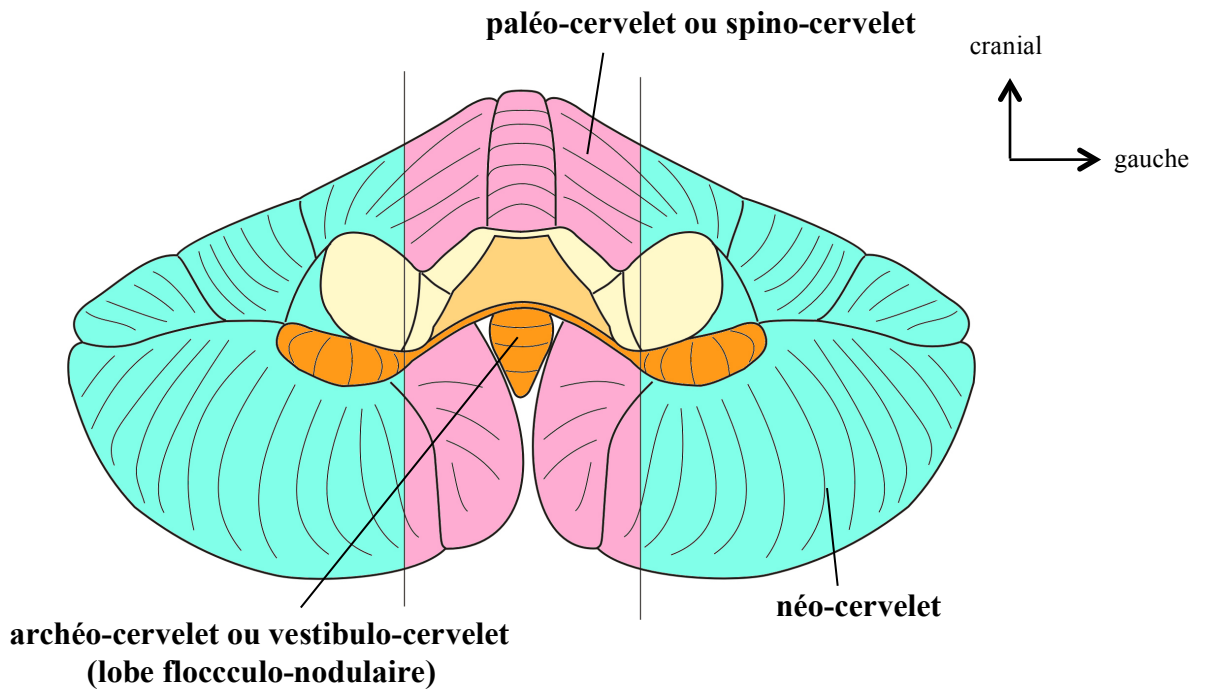
Voies motrices et sensibles dans la capsule interne



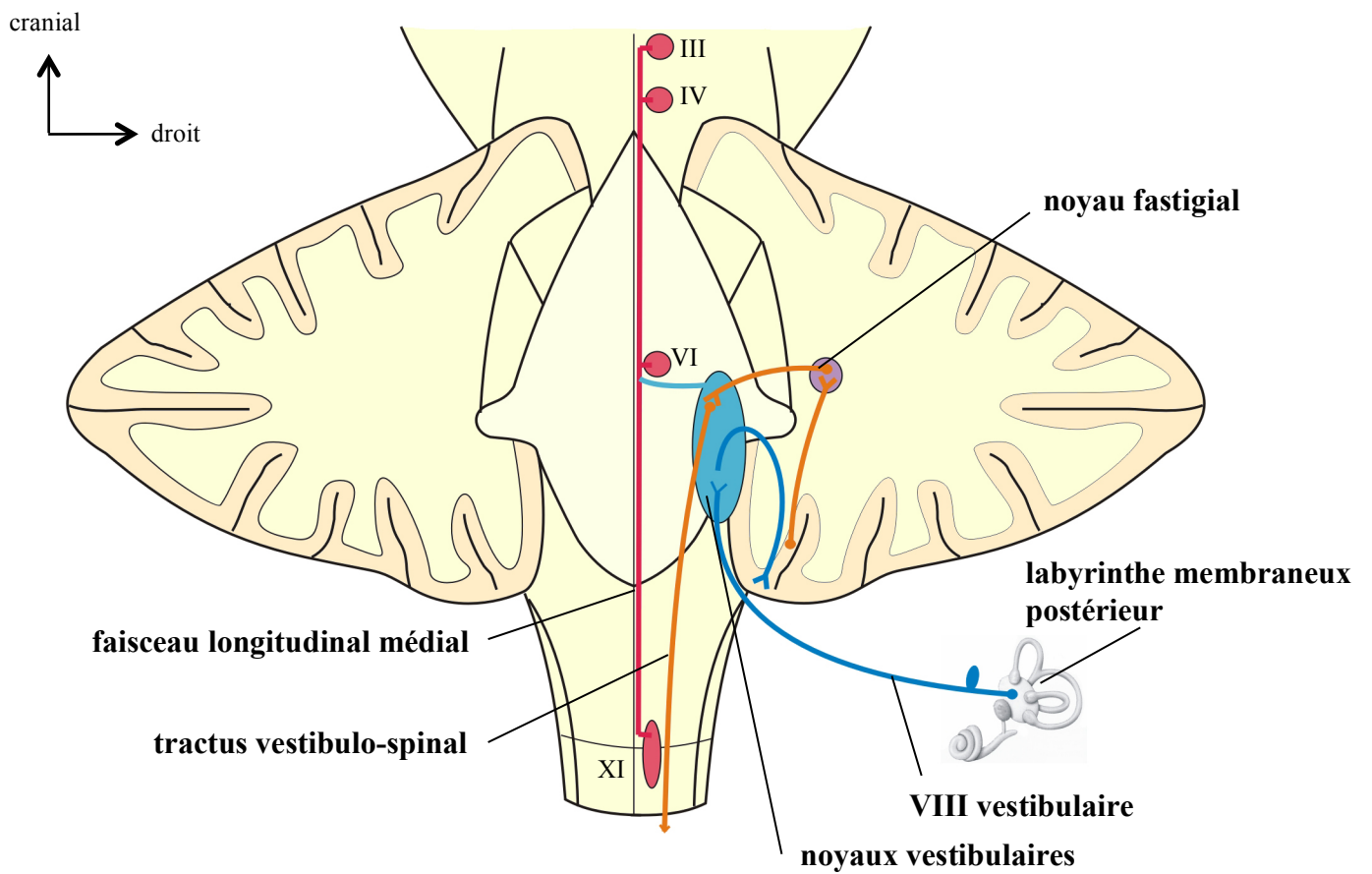
Le tractus pyramidal



Coupes du tronc cérébral et formations motrices

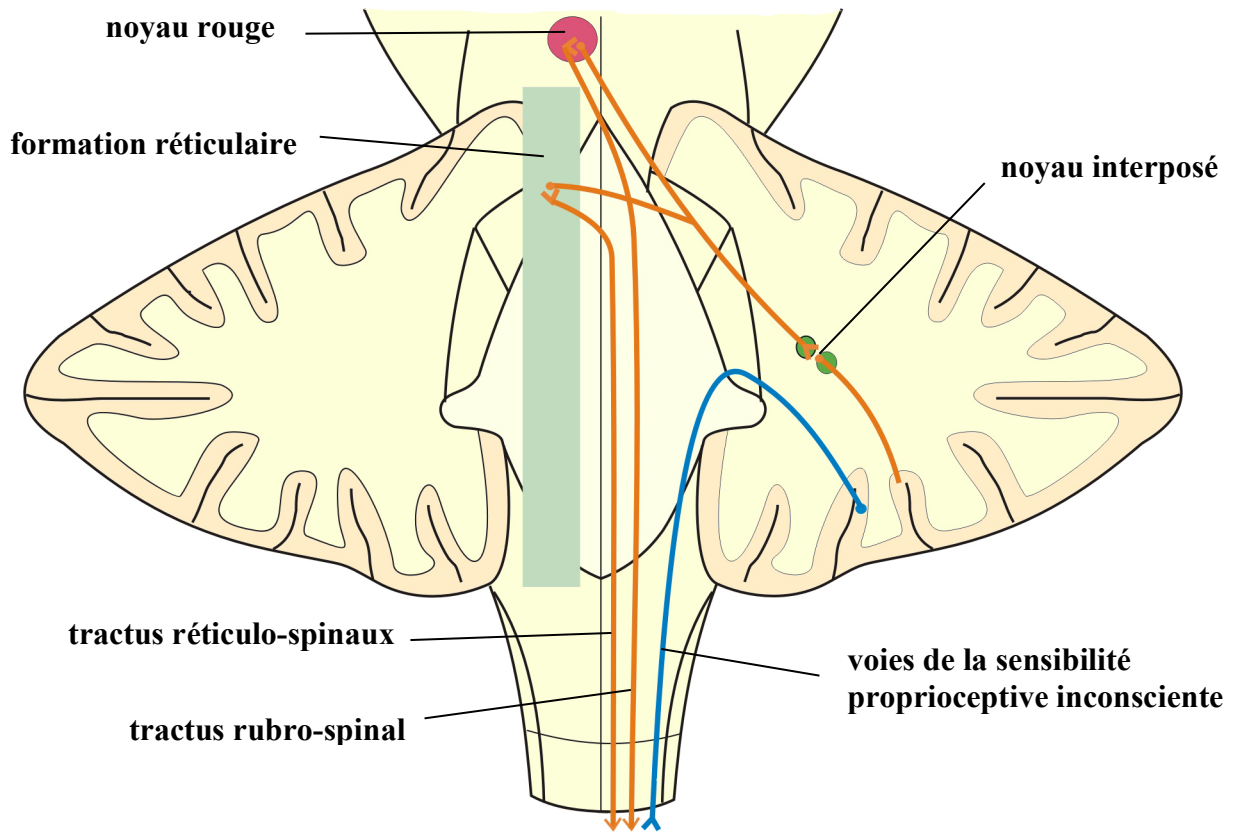


Division fonctionnelle du cervelet (vue ventrale)



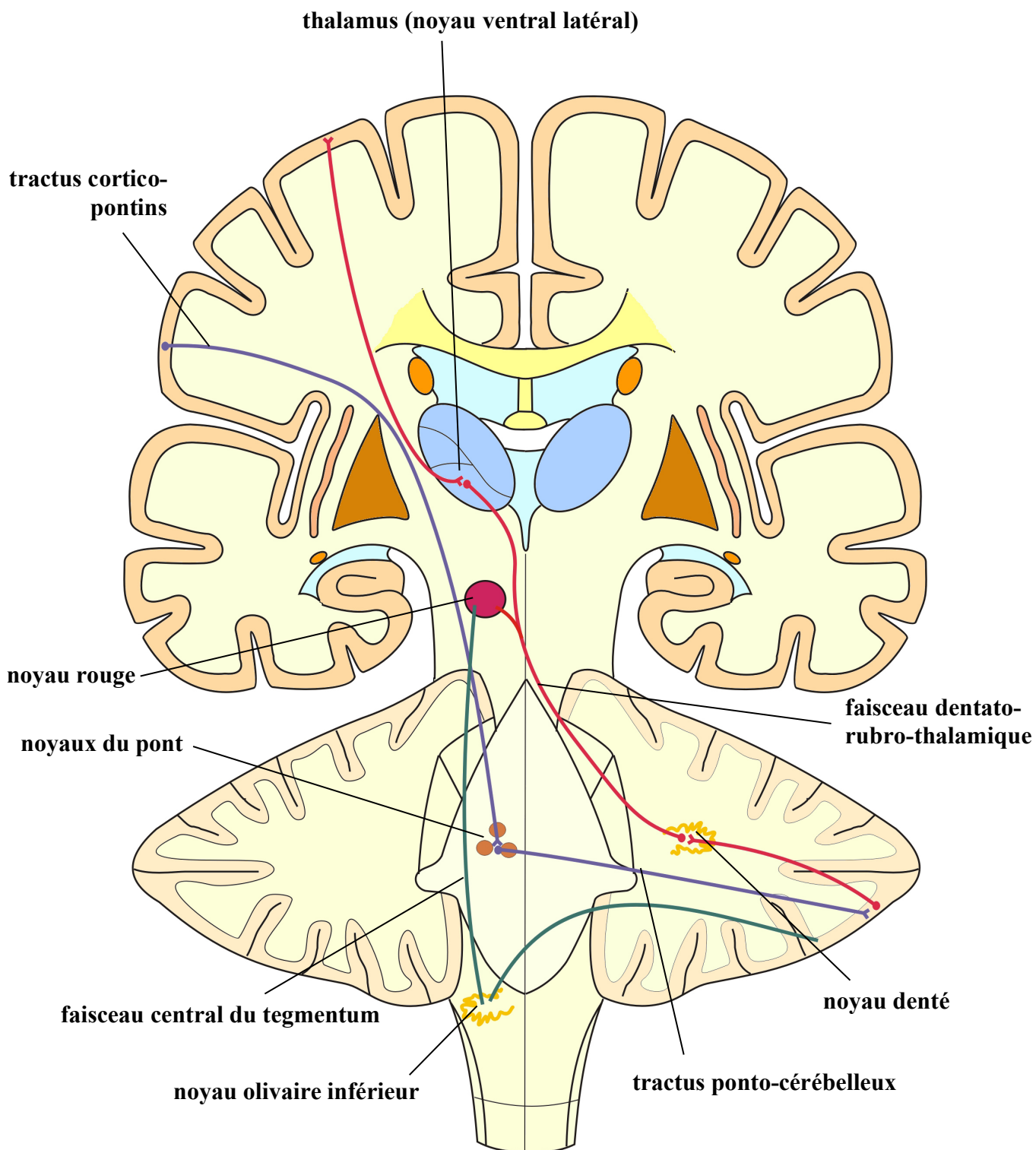
L'archéo-cervelet (lobe flocculo-nodulaire)

cranial
↑
droit
→

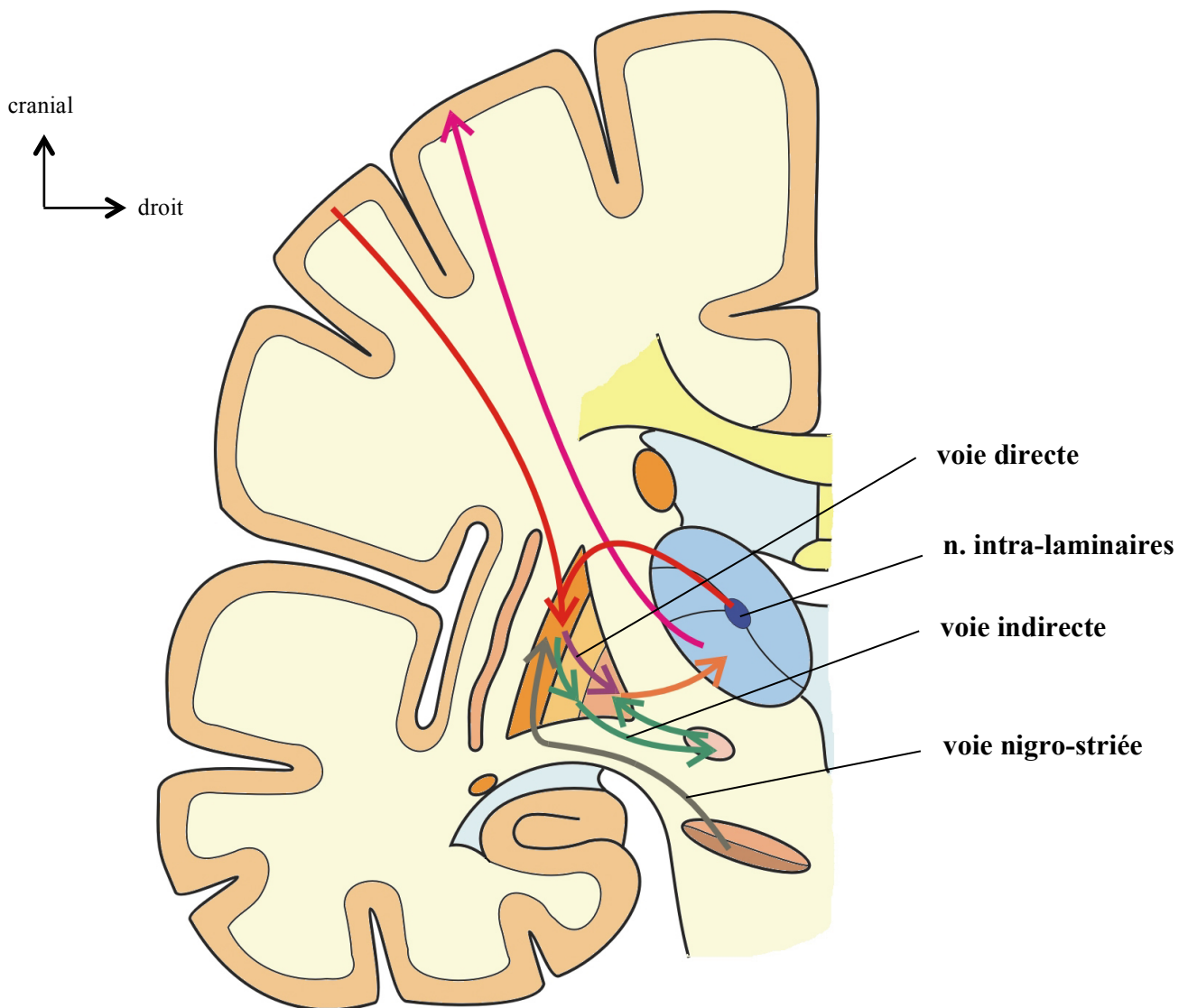
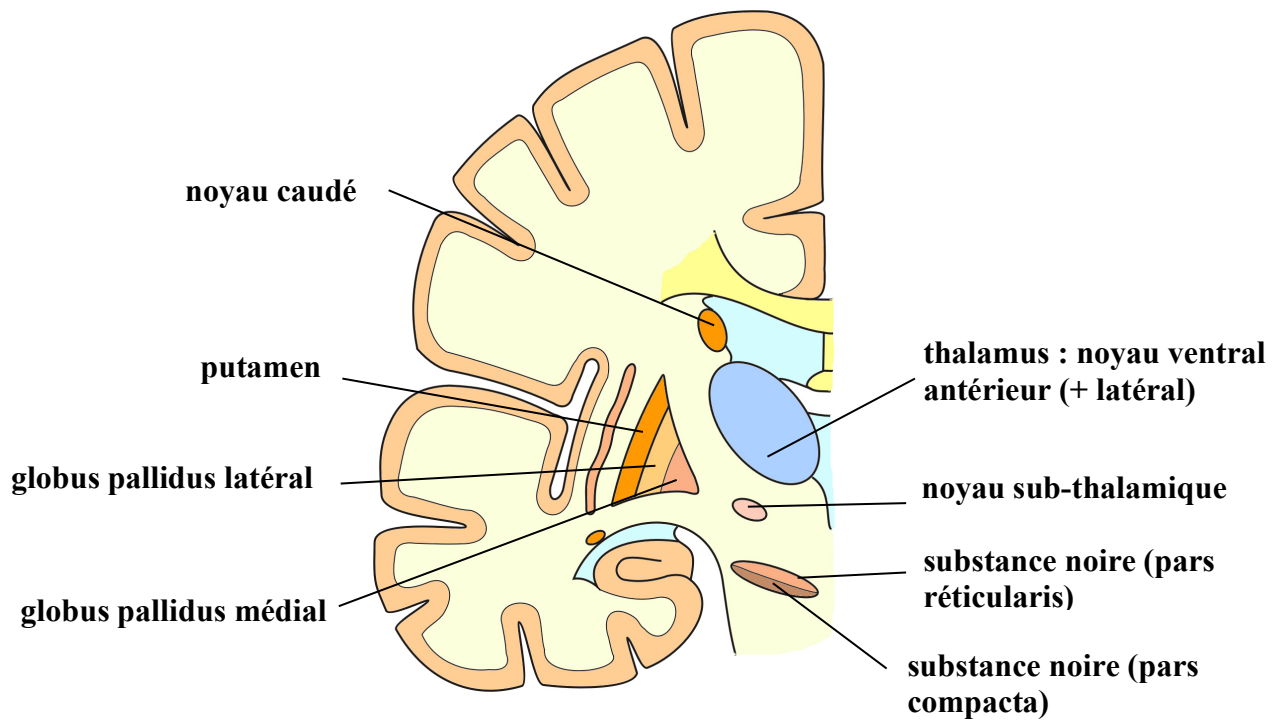


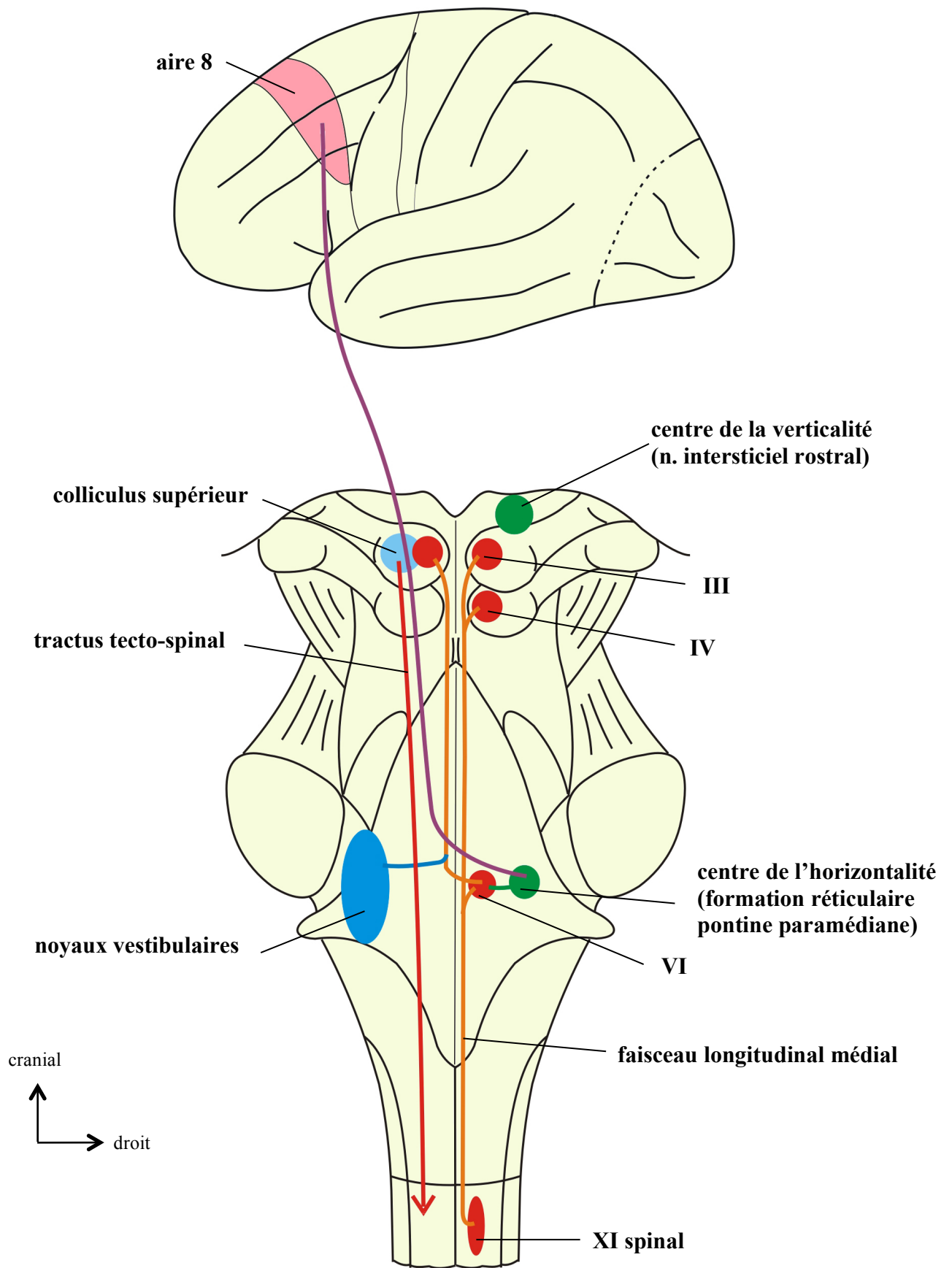
Le paléo-cervelet

cranial
↑
droit
→



Le néo-cervelet

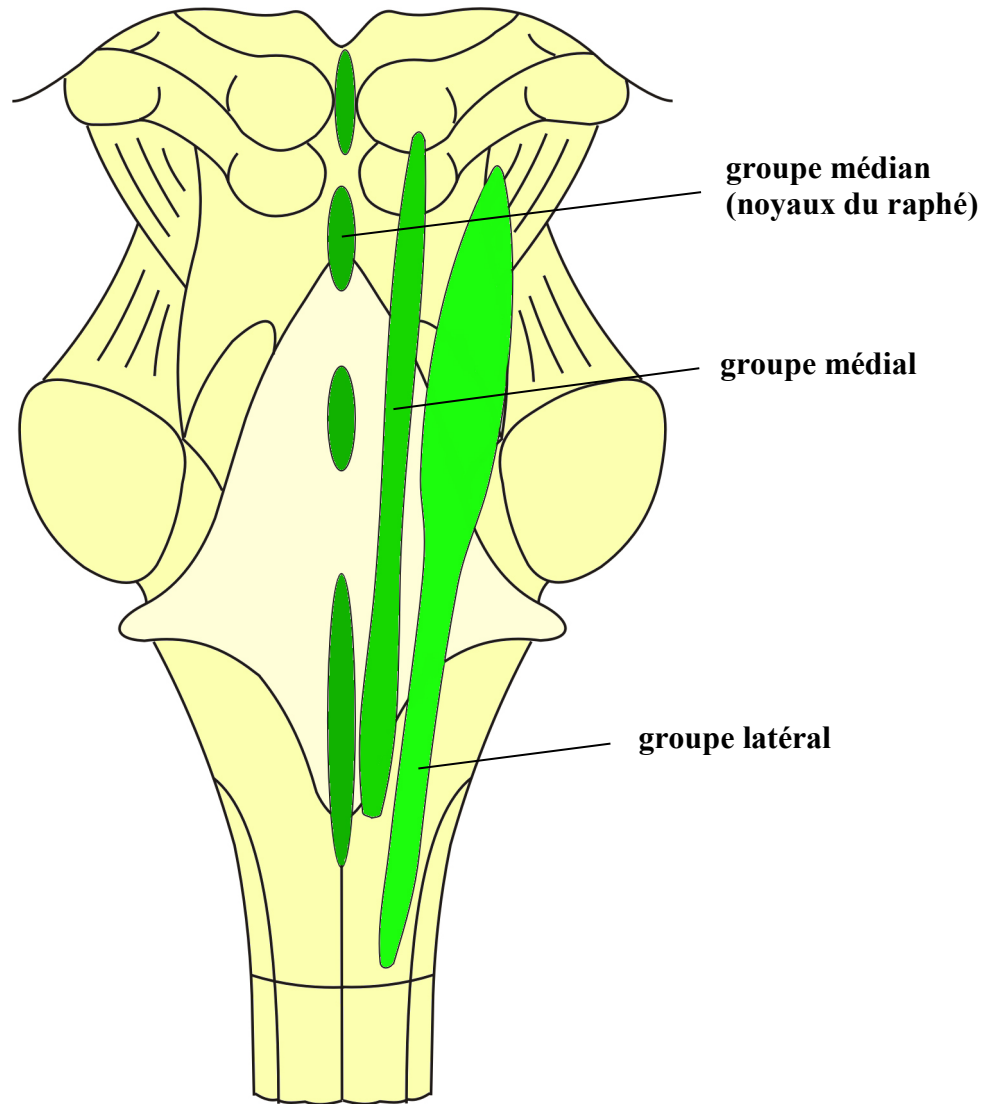




Voies de la motricité oculaire

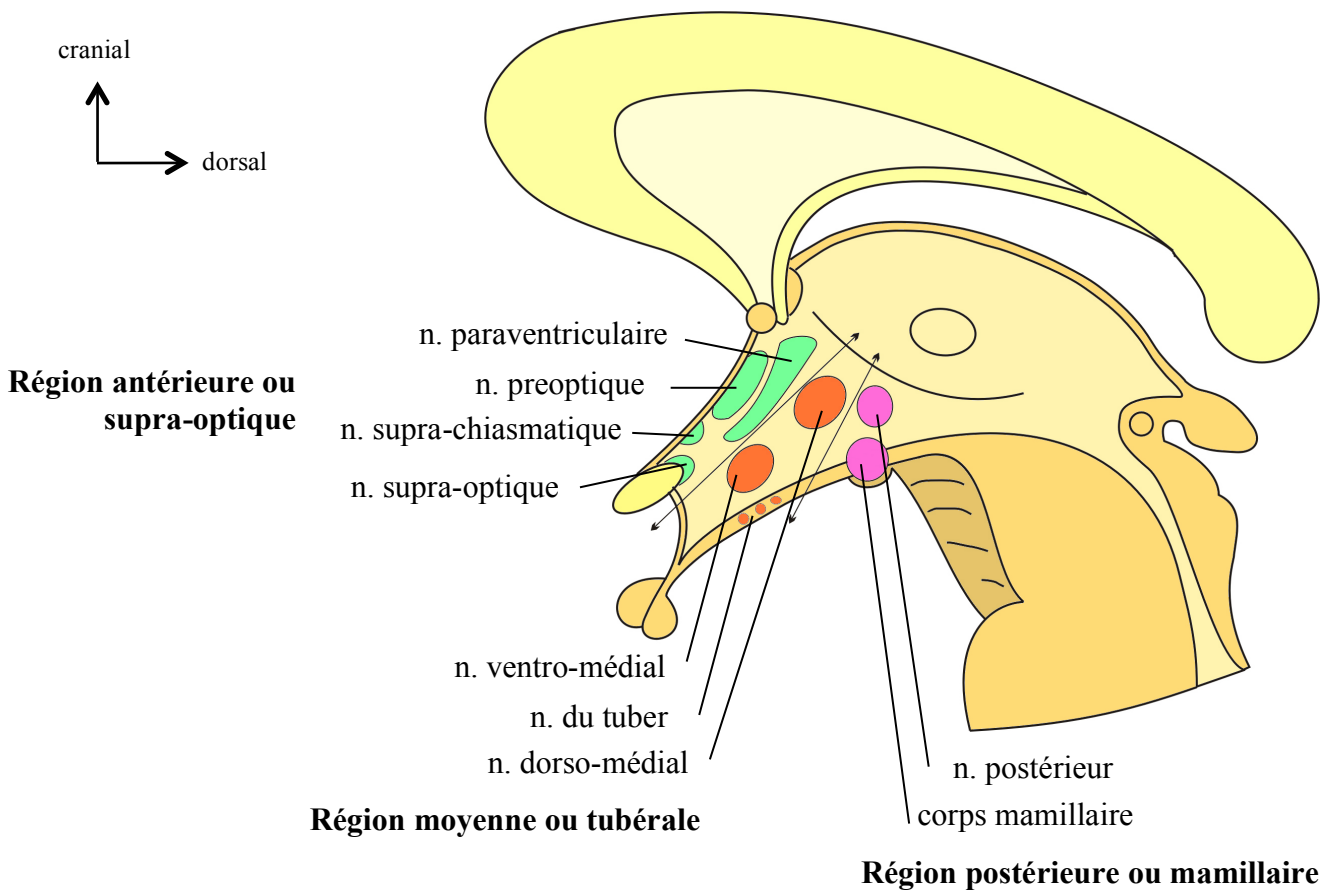
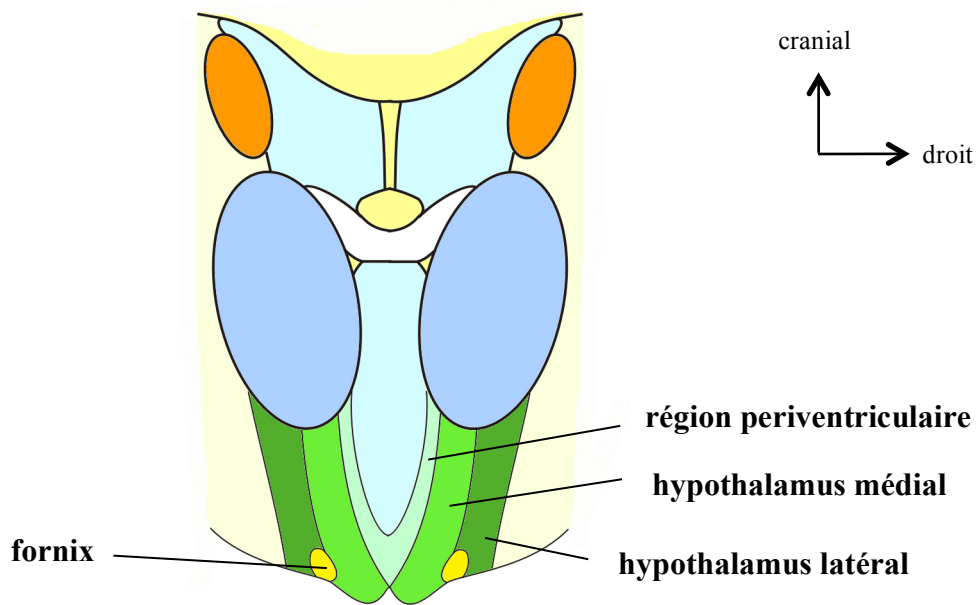
FORMATION RETICULAIRE

cranial
↑
→ droit

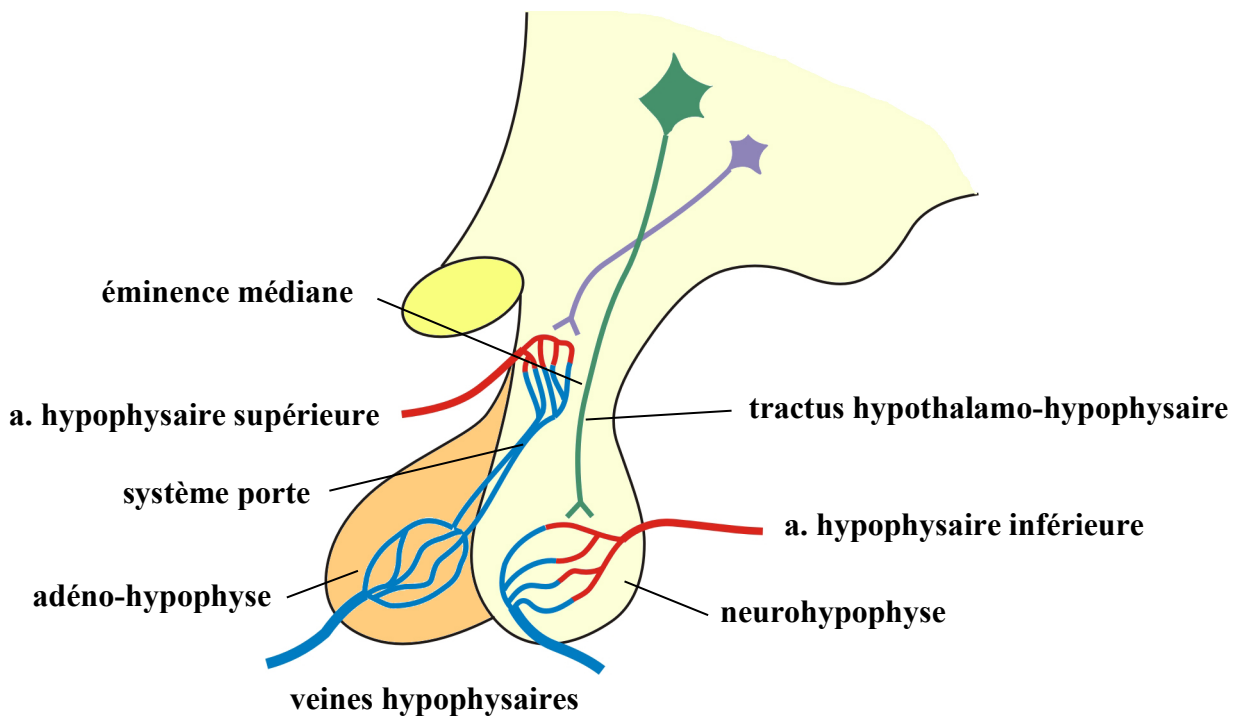
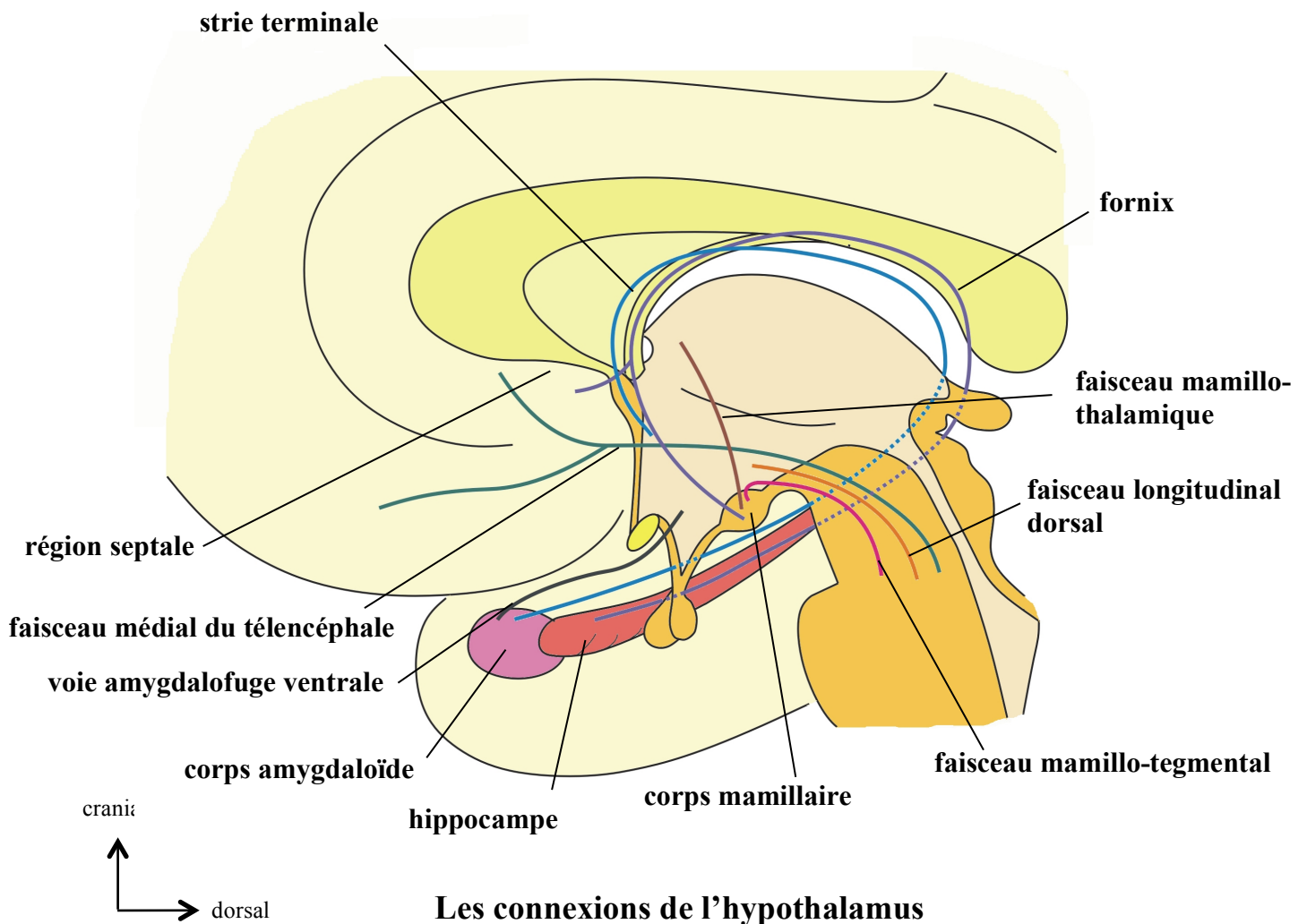


Division fonctionnelle

HYPOTHALAMUS

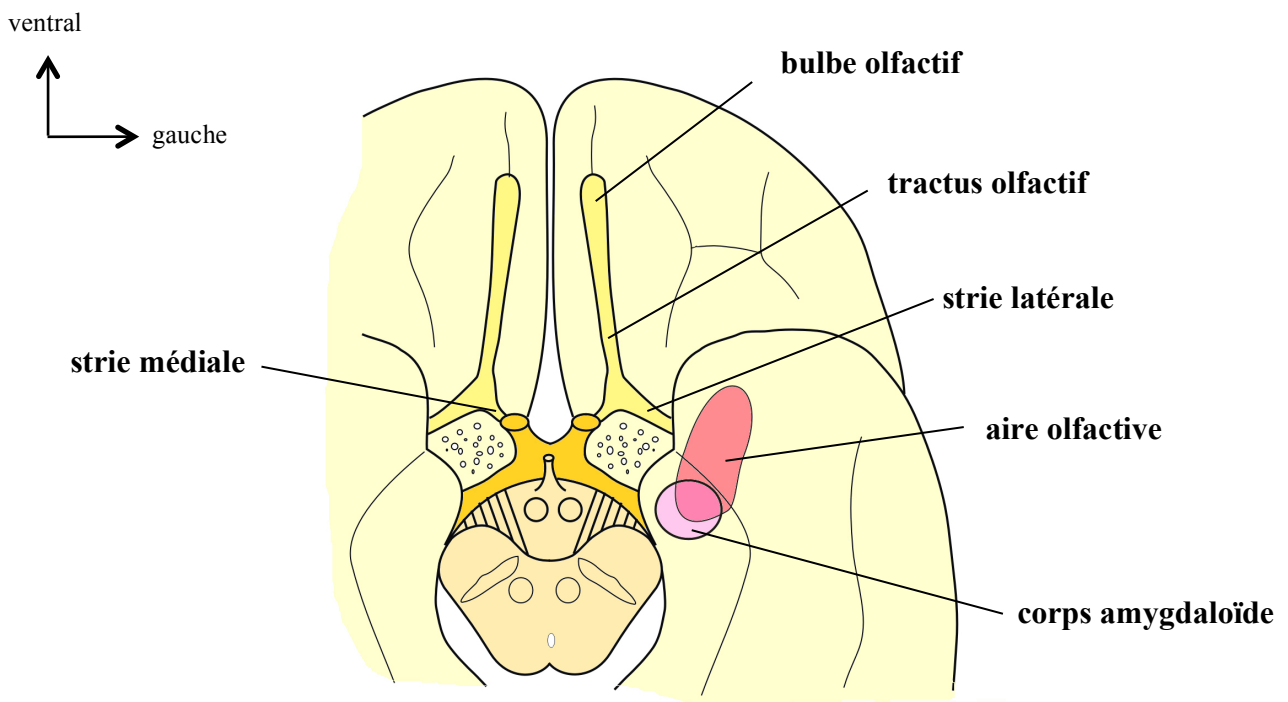
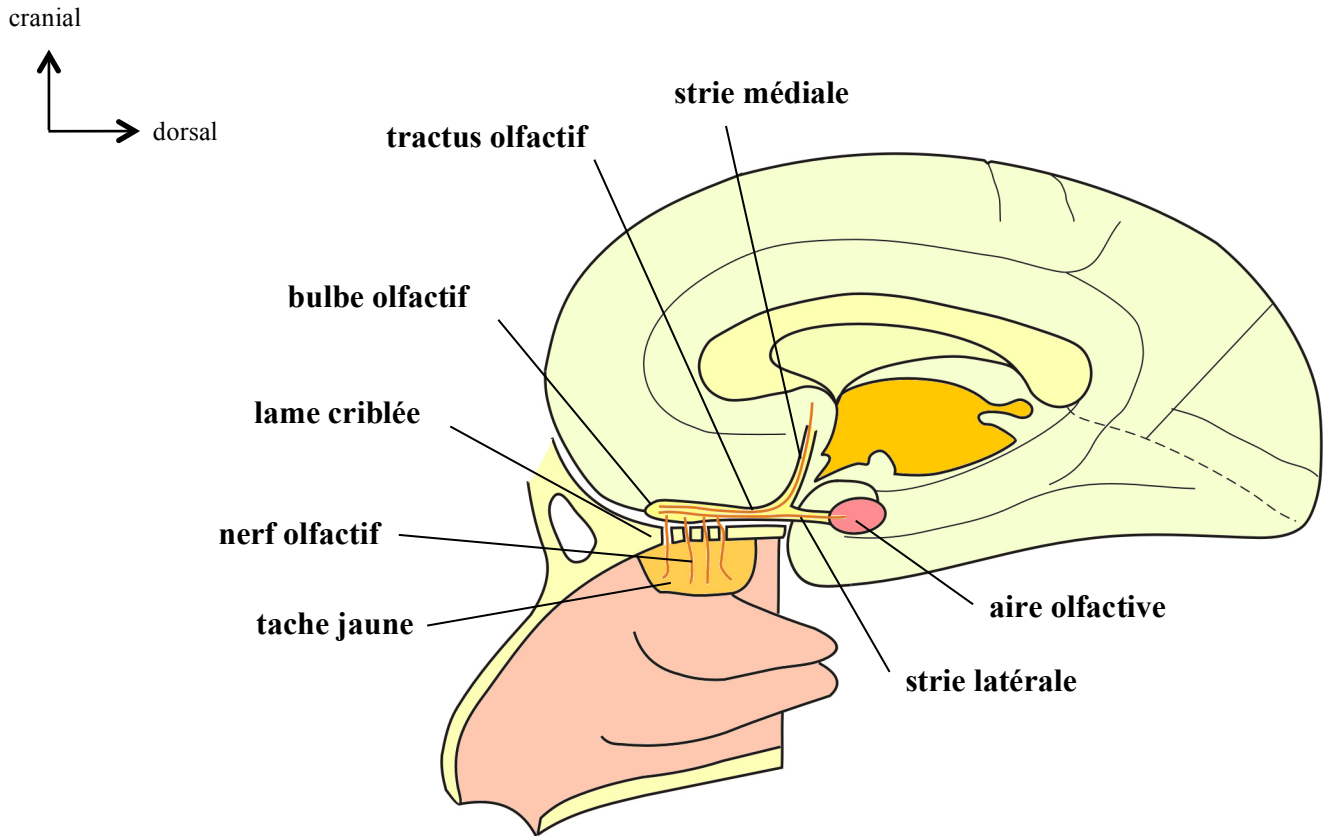


Régions et noyaux de l'hypothalamus

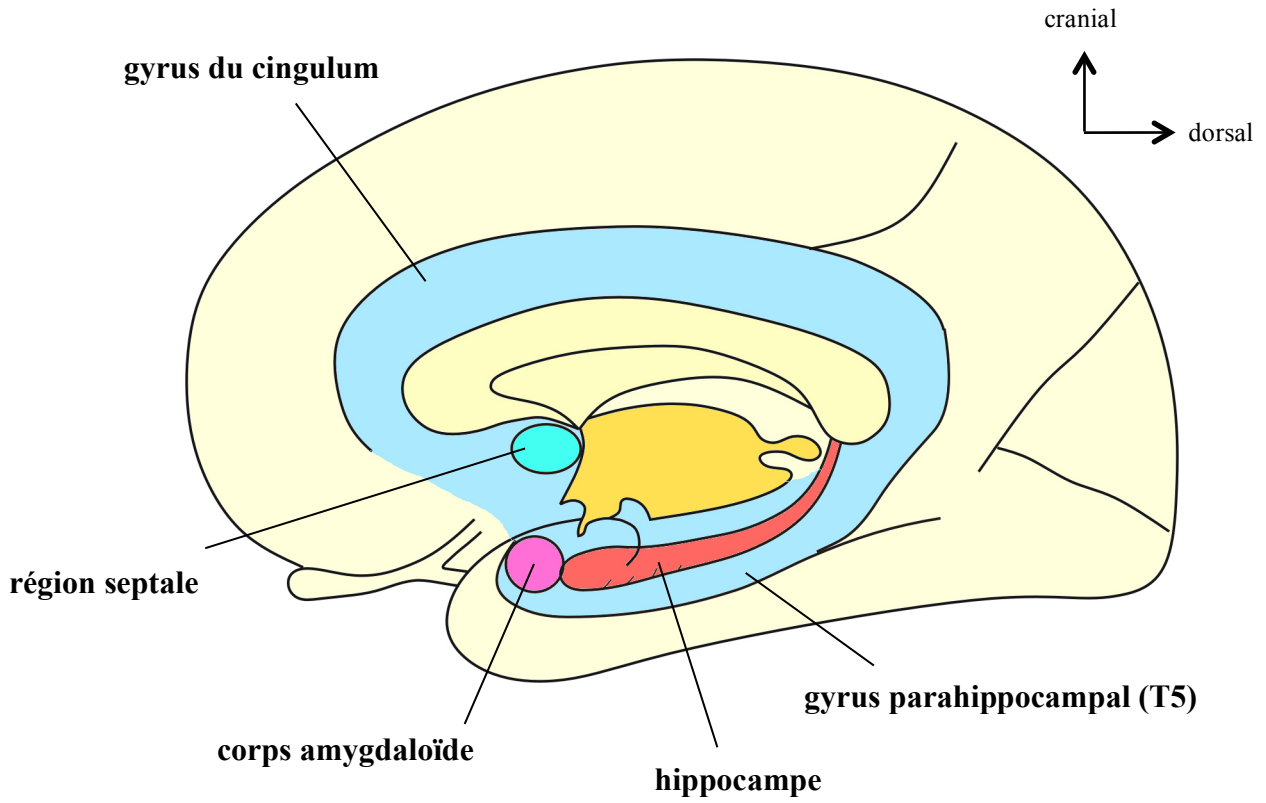


Les connexions hypothalamo-hypophysaires

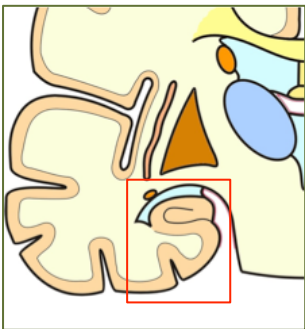
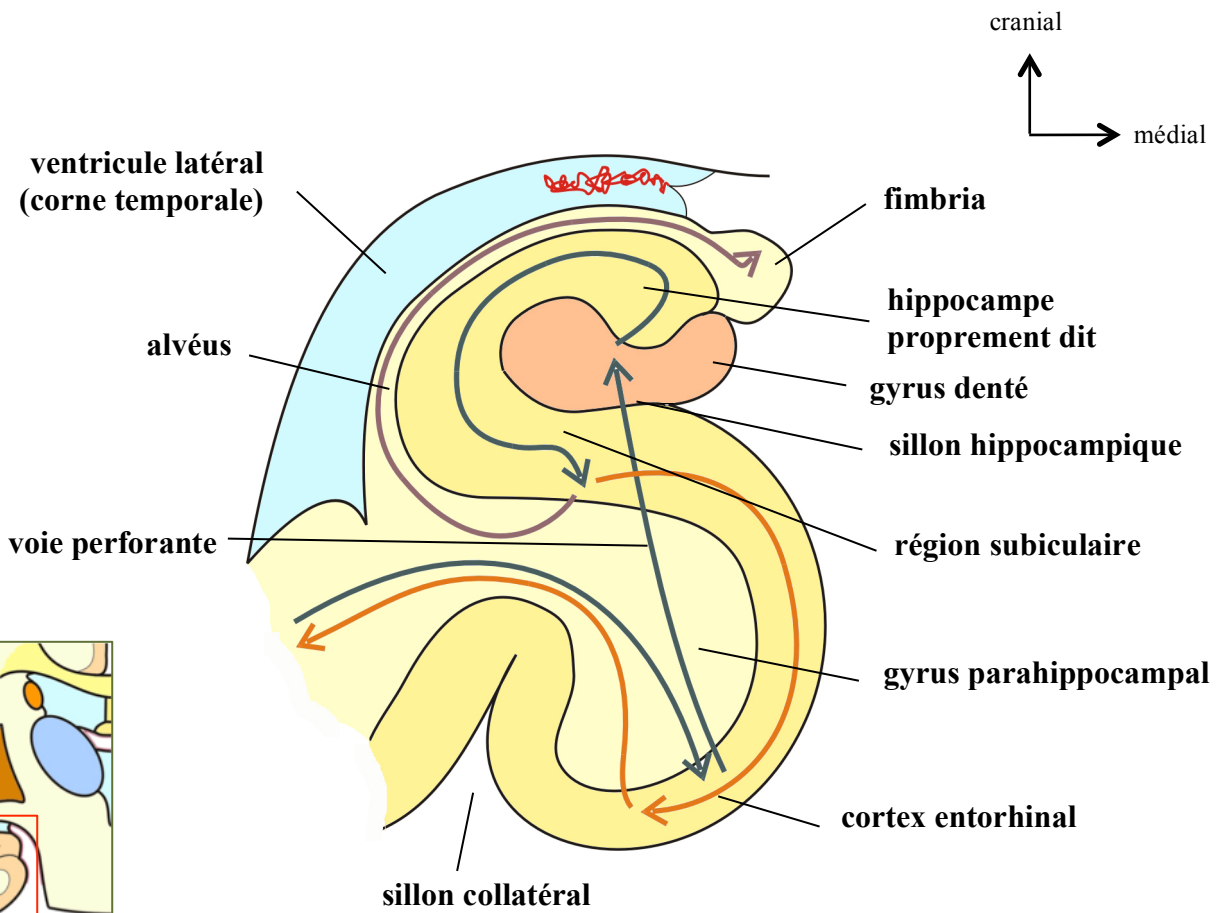
SYSTEME LIMBIQUE



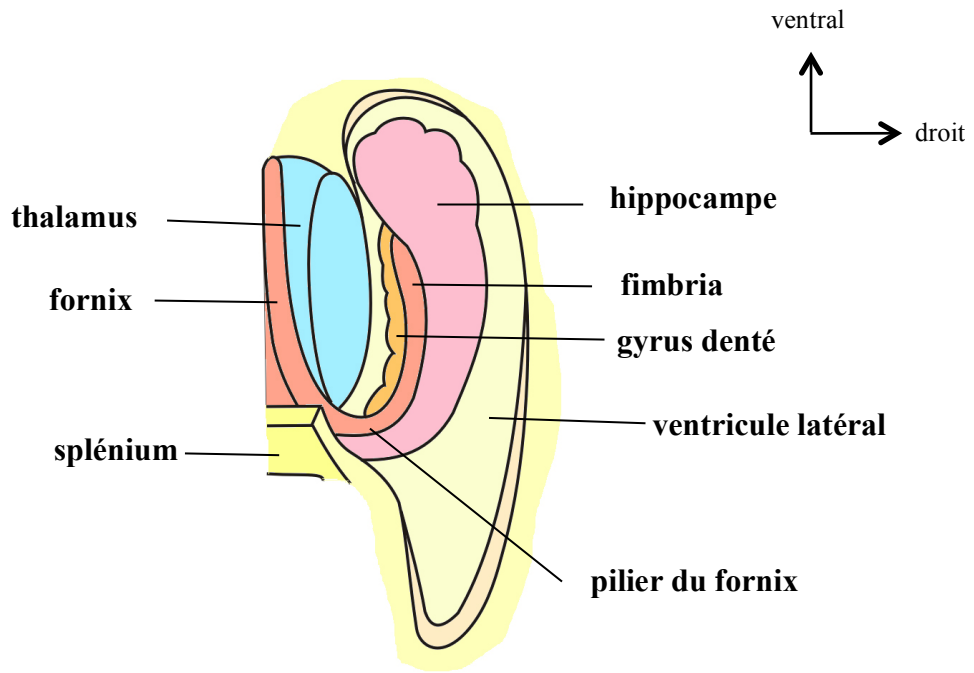
Les voies olfactives



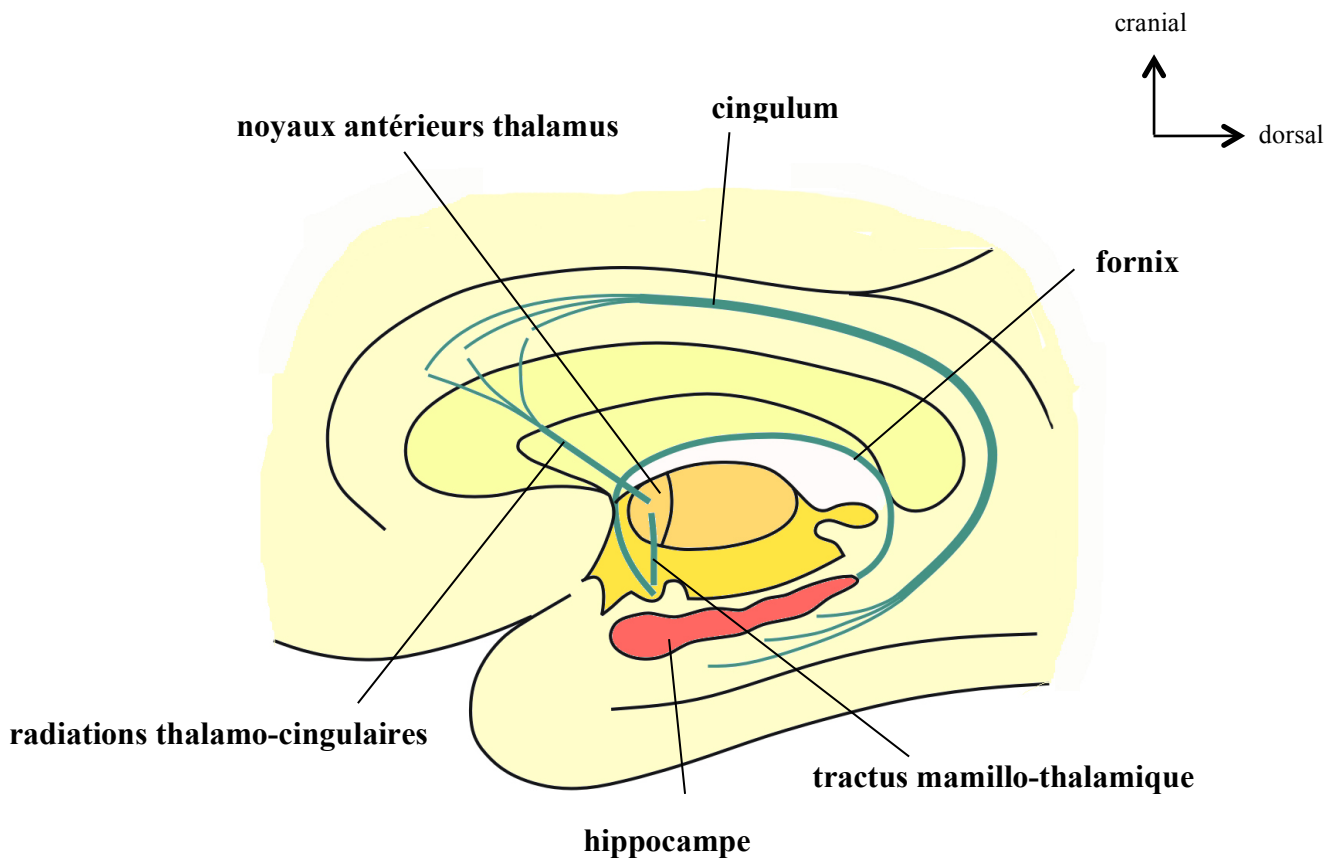
Les structures du système limbique



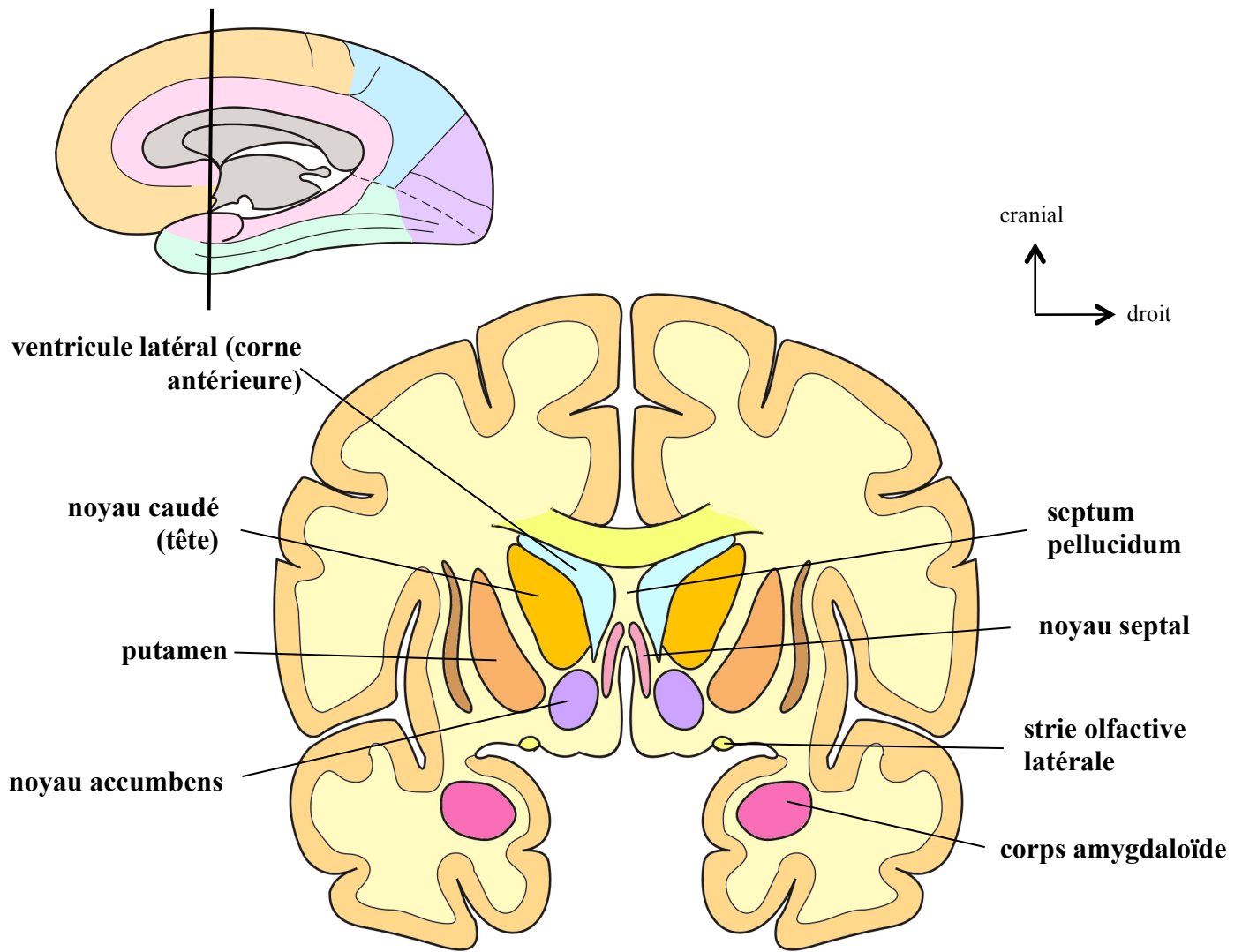
La formation hippocampique



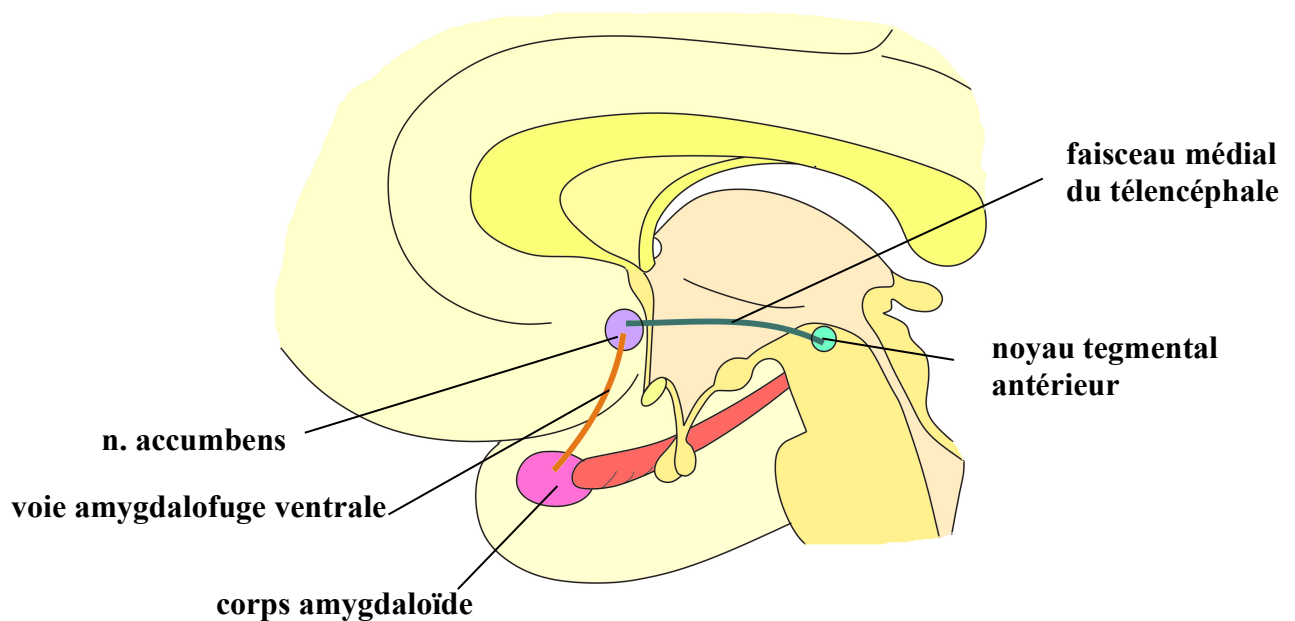
Formation hippocampique
 (vue supérieure après ouverture de la corne inférieure du ventricule latéral)



Le circuit de Papez

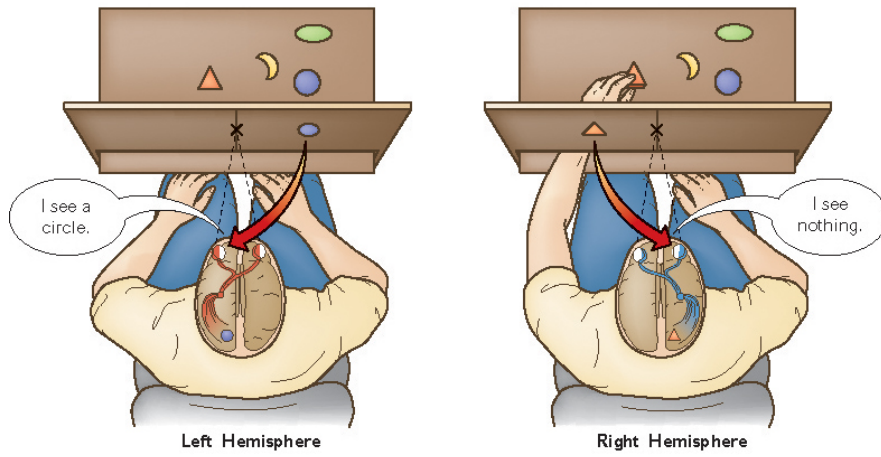


Structures du système limbique sur une coupe frontale antérieure

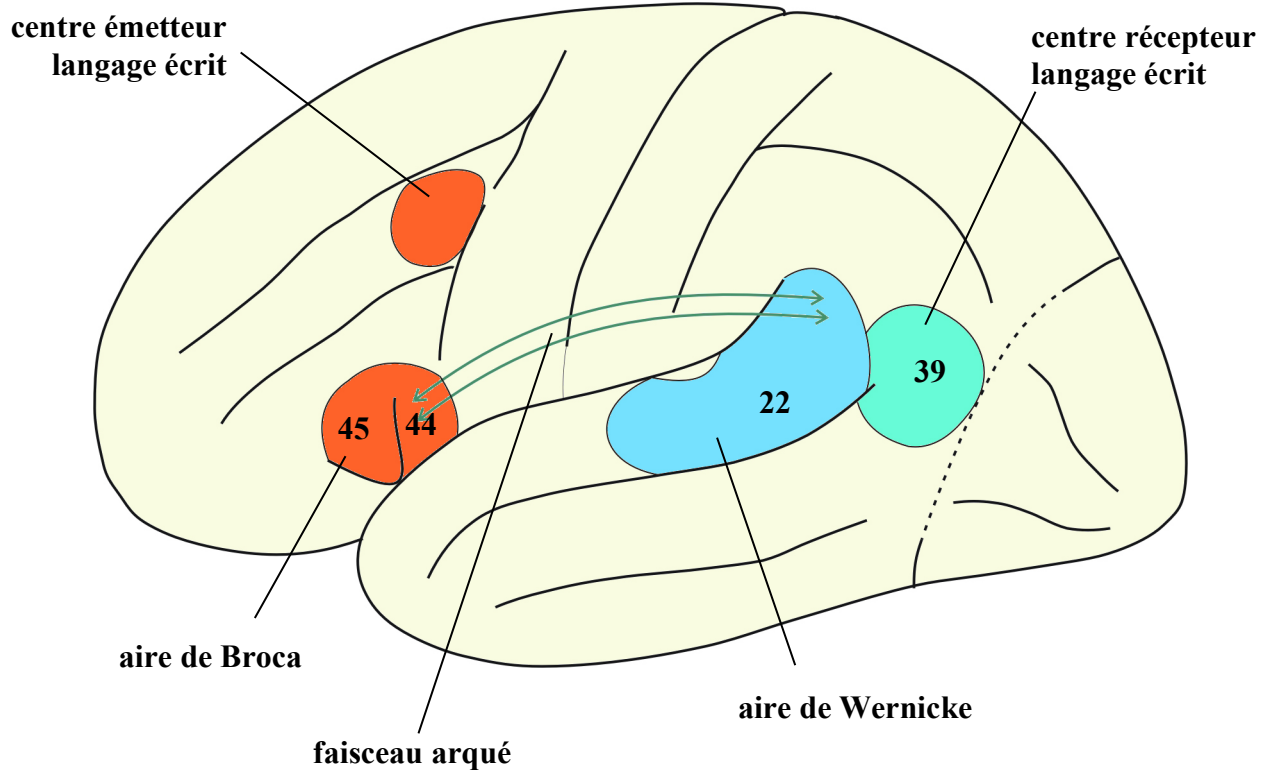


Le noyau accumbens

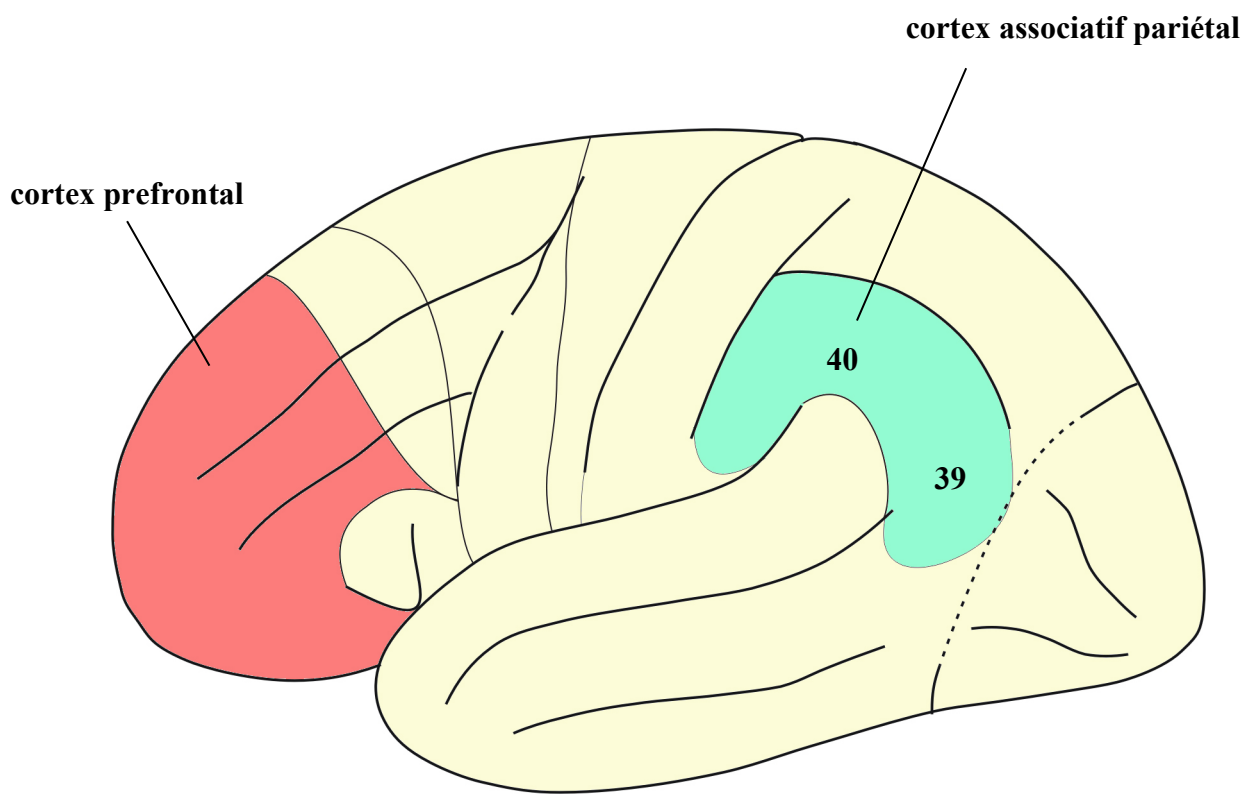
FONCTIONS SUPERIEURES



Split brain



Les aires du langage



Le cortex des fonctions supérieures