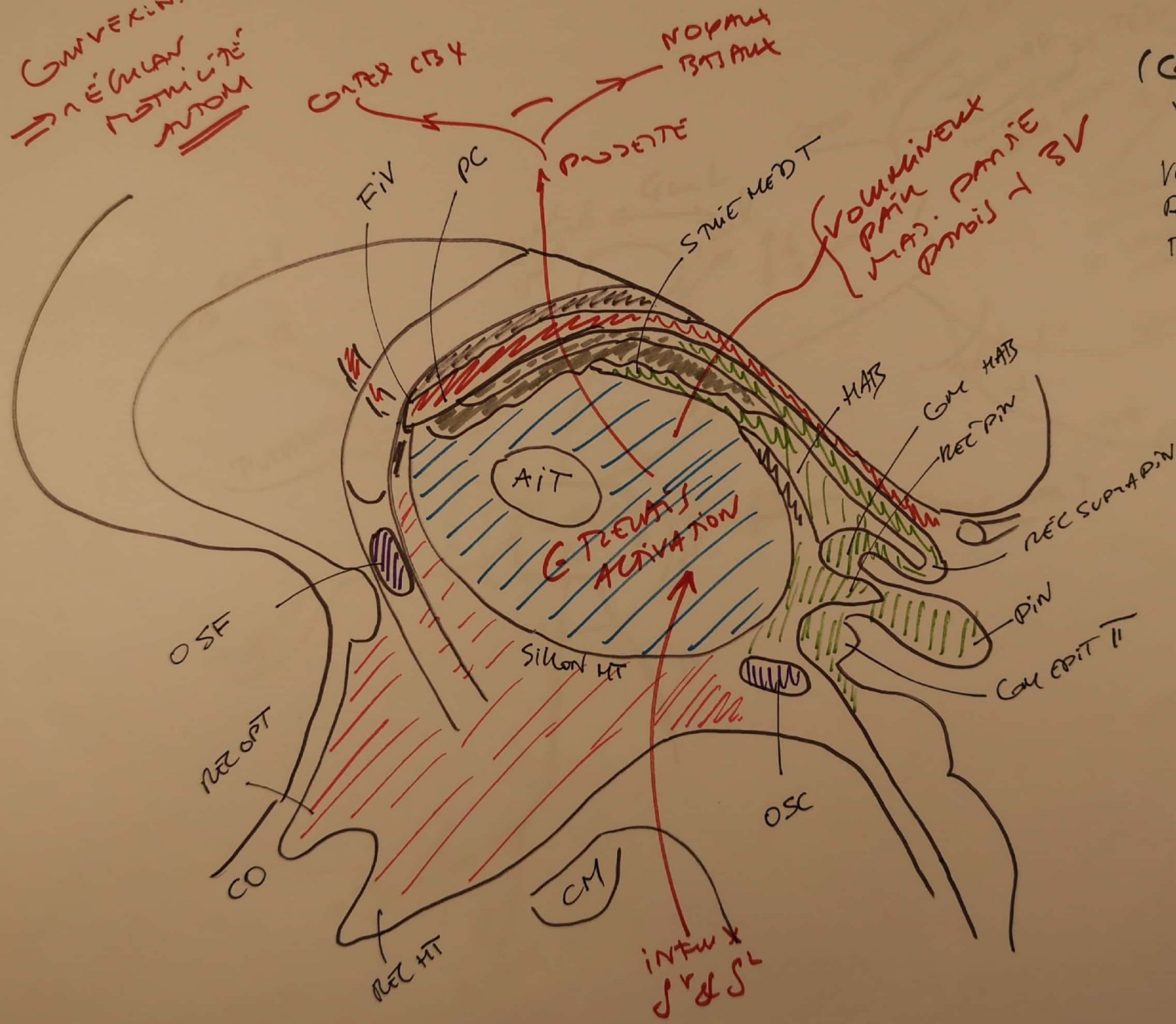
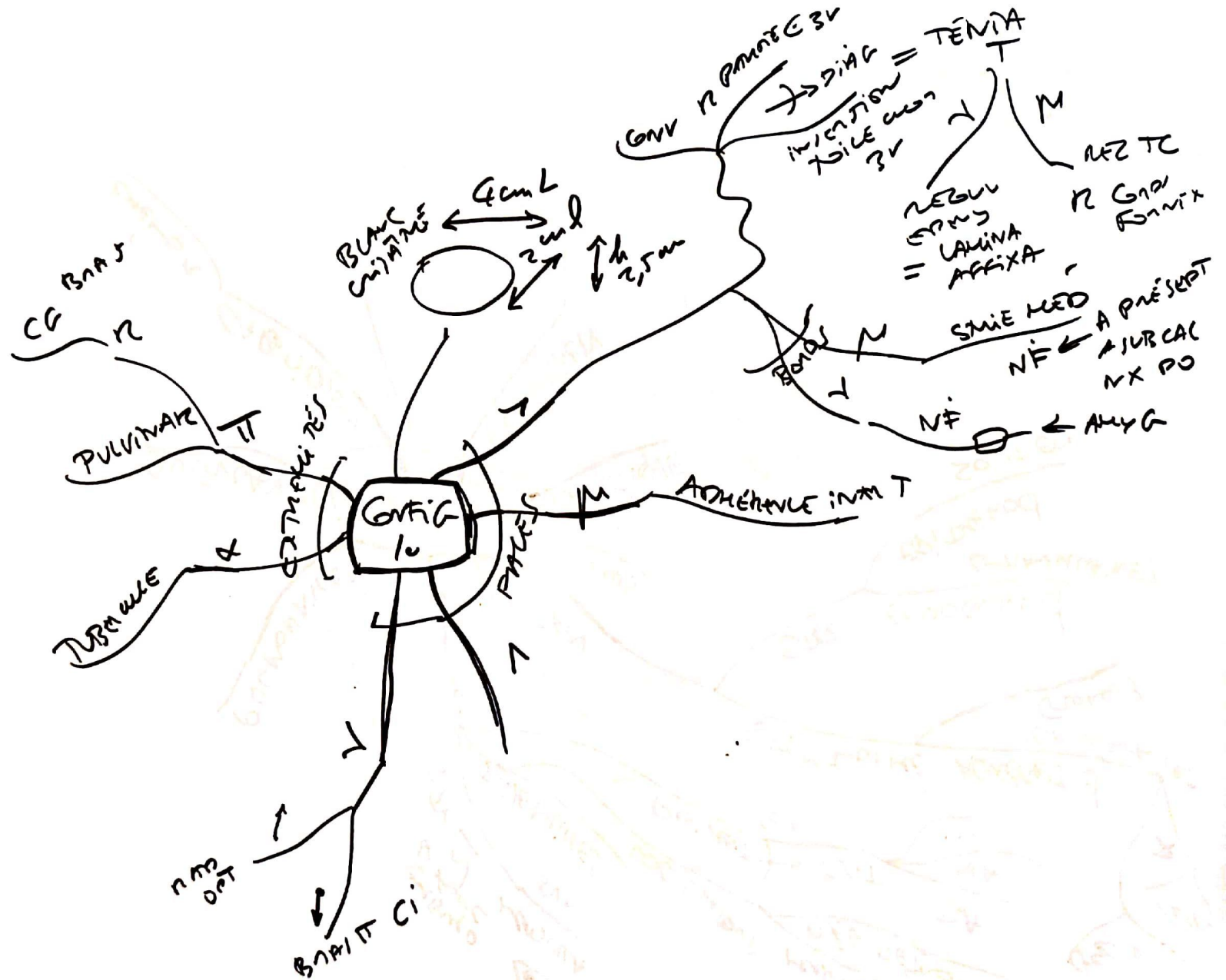


GMP VERKIN
 ⇒ a É (M) AN
 NOSTRI CITE
 ANOM

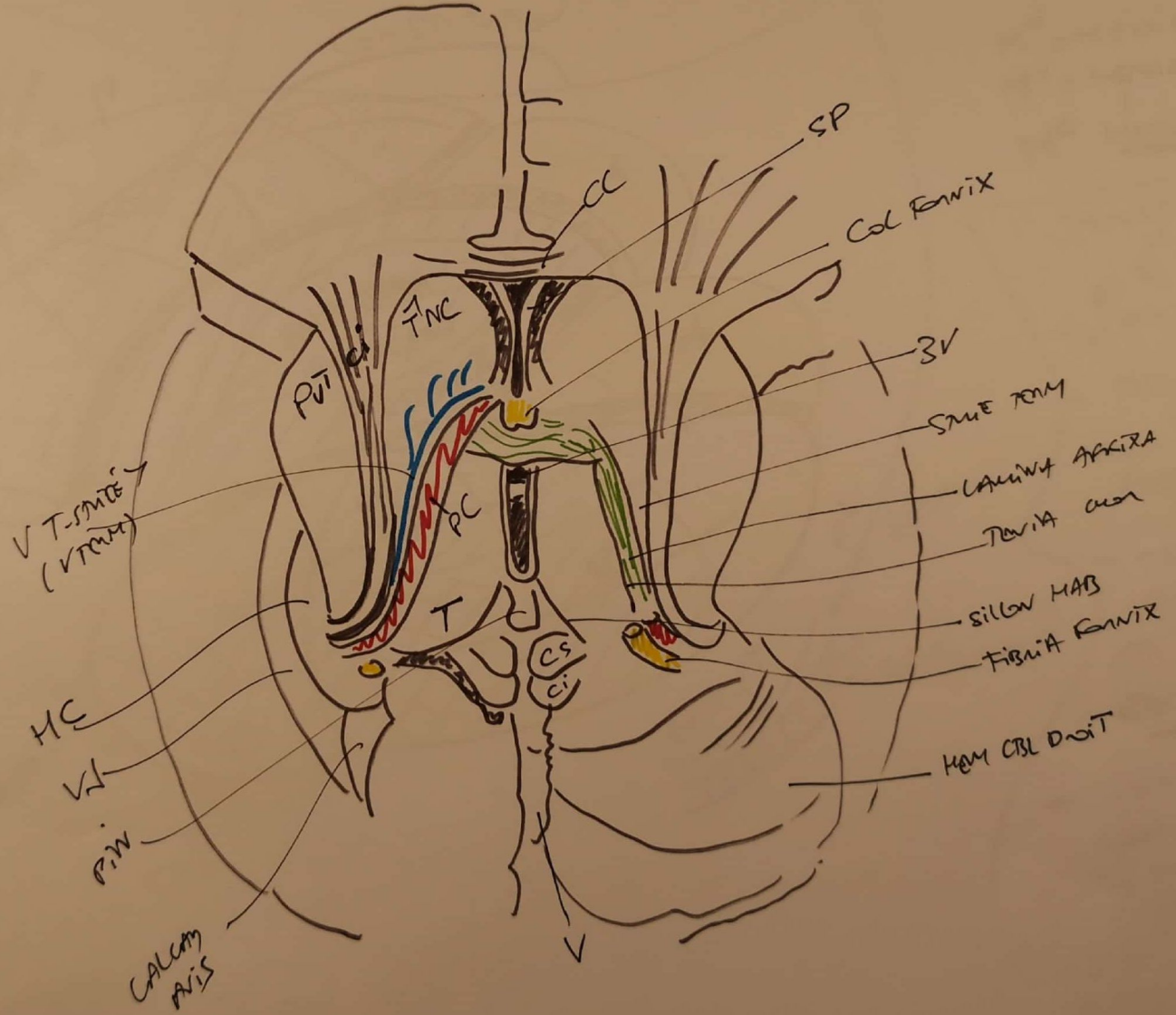
26.2
 DIENC
 (GUPE SAG-MED
 VUE M)

VENT OPI
 ROSE HYPO
 BLEV T





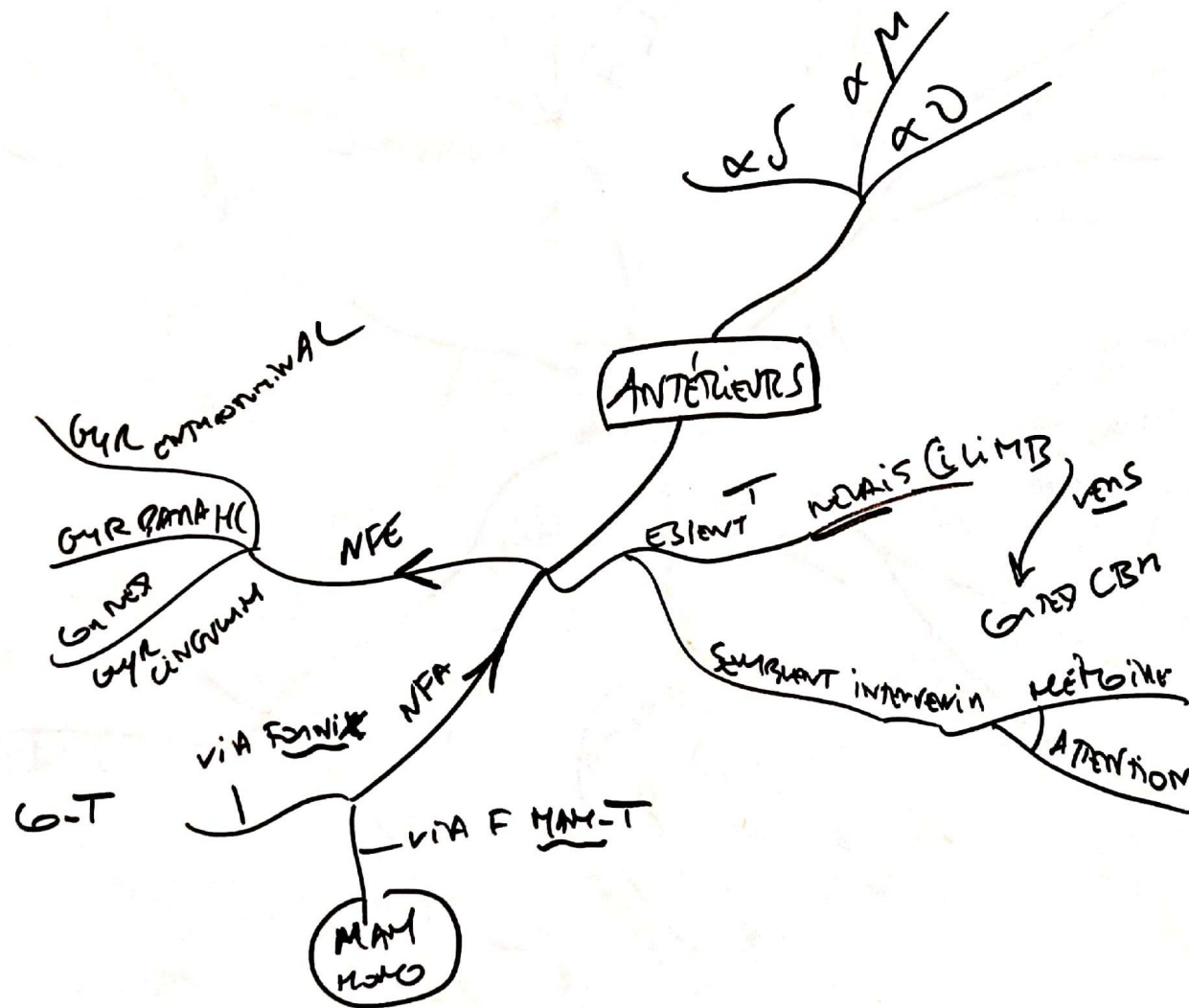
26.3
 STM - I CENVETU
 (COUPE CLANF - VUET)
 ^
 TMMIV

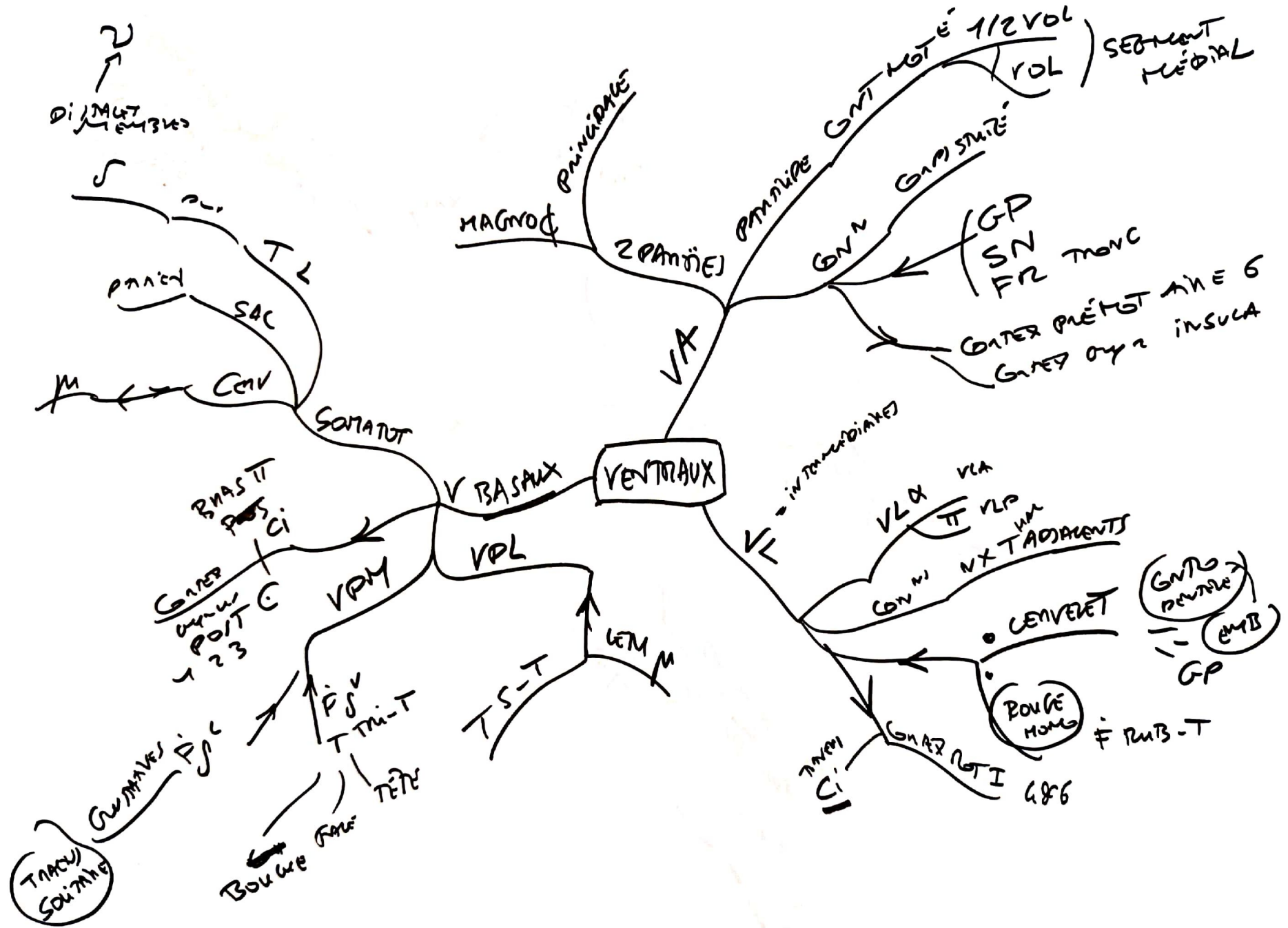


M^N = MÉDIANS
 M^V = MÉDIAUX
 M^O = MÉDIO

- FONCTIONS ≠
- J^V ou J^L SPÉC
 - MÉDIAUX GASTRIQUES
 POUR VOÏT
 VGT & ~~ST~~
 - ASSOCIATIVE
 DIF LANCE
 M L^V GUST
 OU NX BASANT
 → MR
 - INTUITION
 GONDWAN
 MRME VOYANT

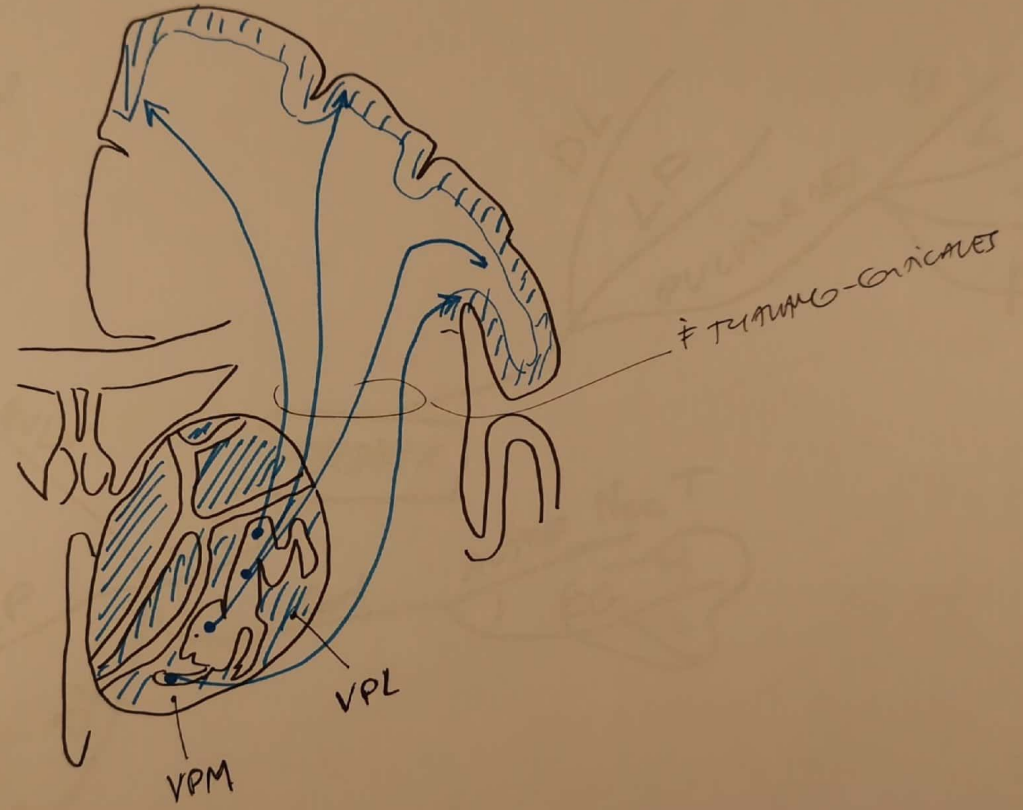


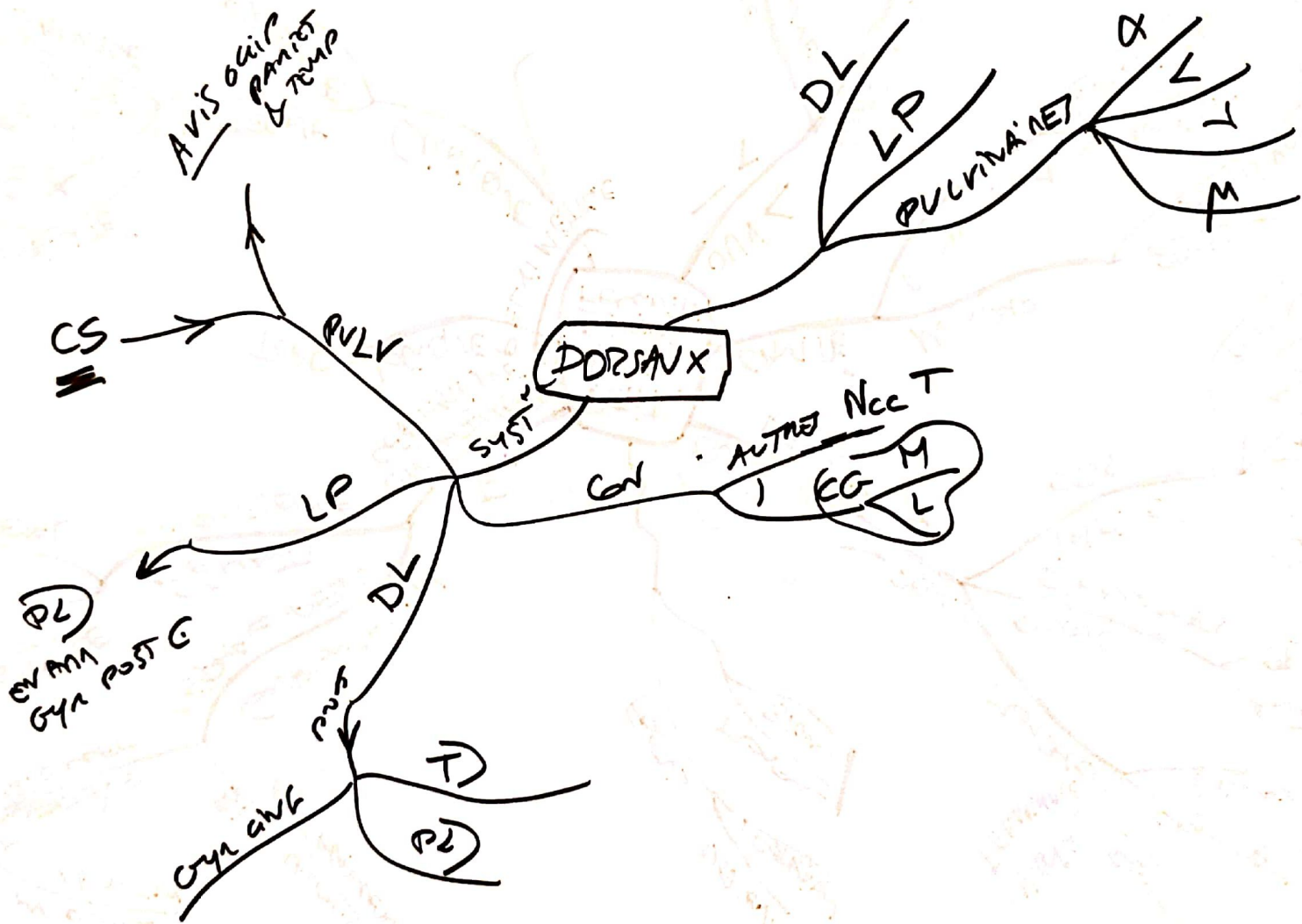


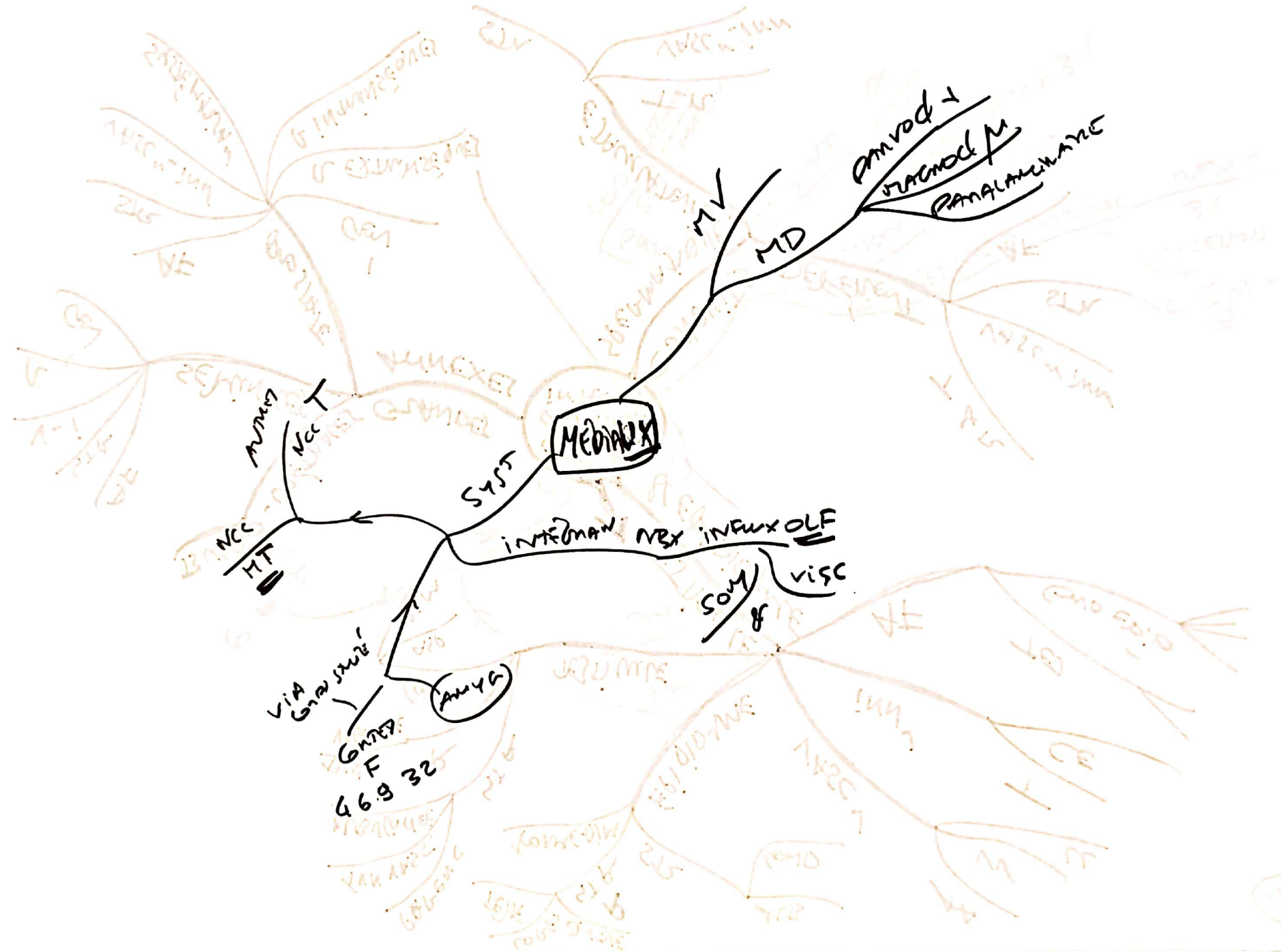


26.7

PROG GAT
NX VEN TACTIX
SOMATO
SENSITIVE

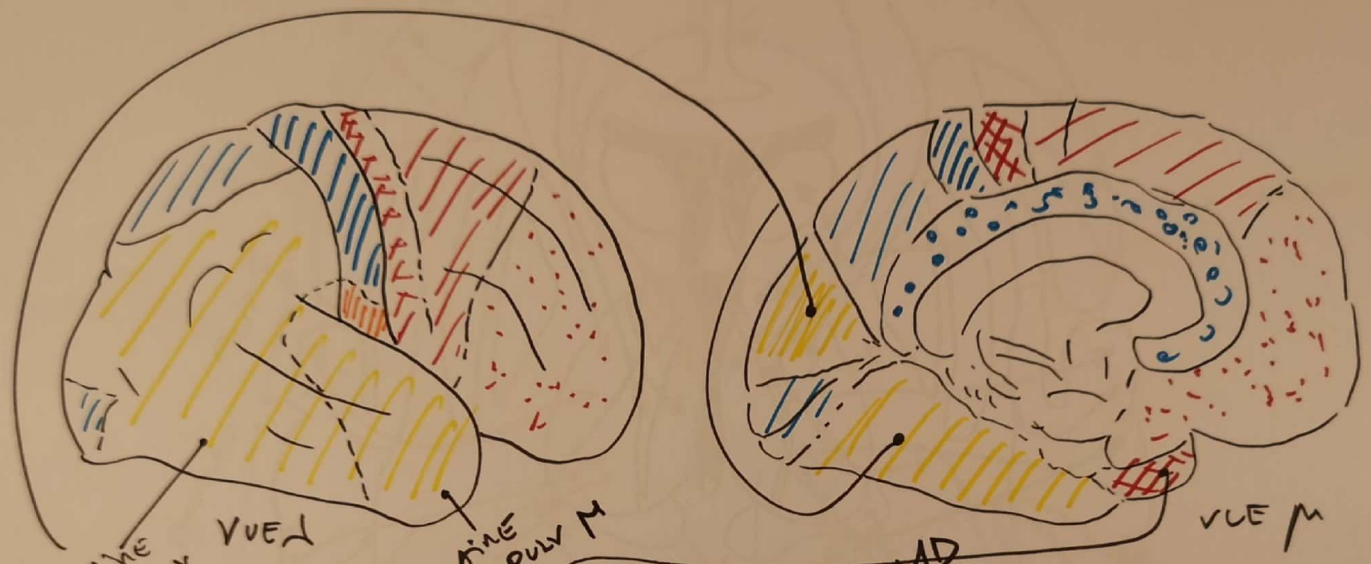




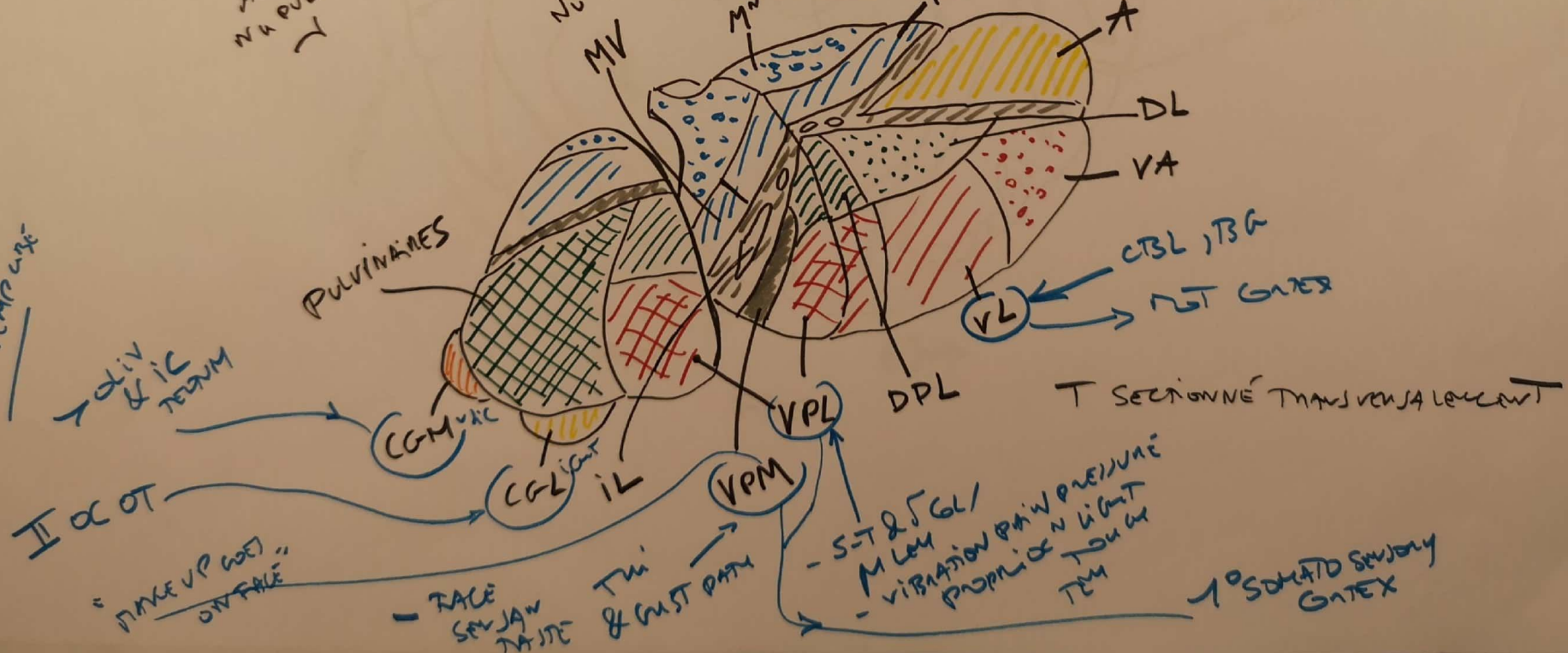




PG. 5
 A RES
 PROTECT
 CBL
 DES NOYAU



LINE N/A PULV
 VUE L
 LINE N/A PULV M
 VUE M



10 VLS GATEX
 LARGE SULEX
 MIDG
 TEMP LIFE

OLIV & IC
 TERNUM

II & OT

"TAKE UP GATE"
 ON FACE

FACE
 SENS JAW
 TASTE
 TH & GUST PATH

S-T & GGL
 M LEM
 VIBRATION PAIN PRESSURE
 PROPRIO N LIGHT
 TOUCH
 TEM

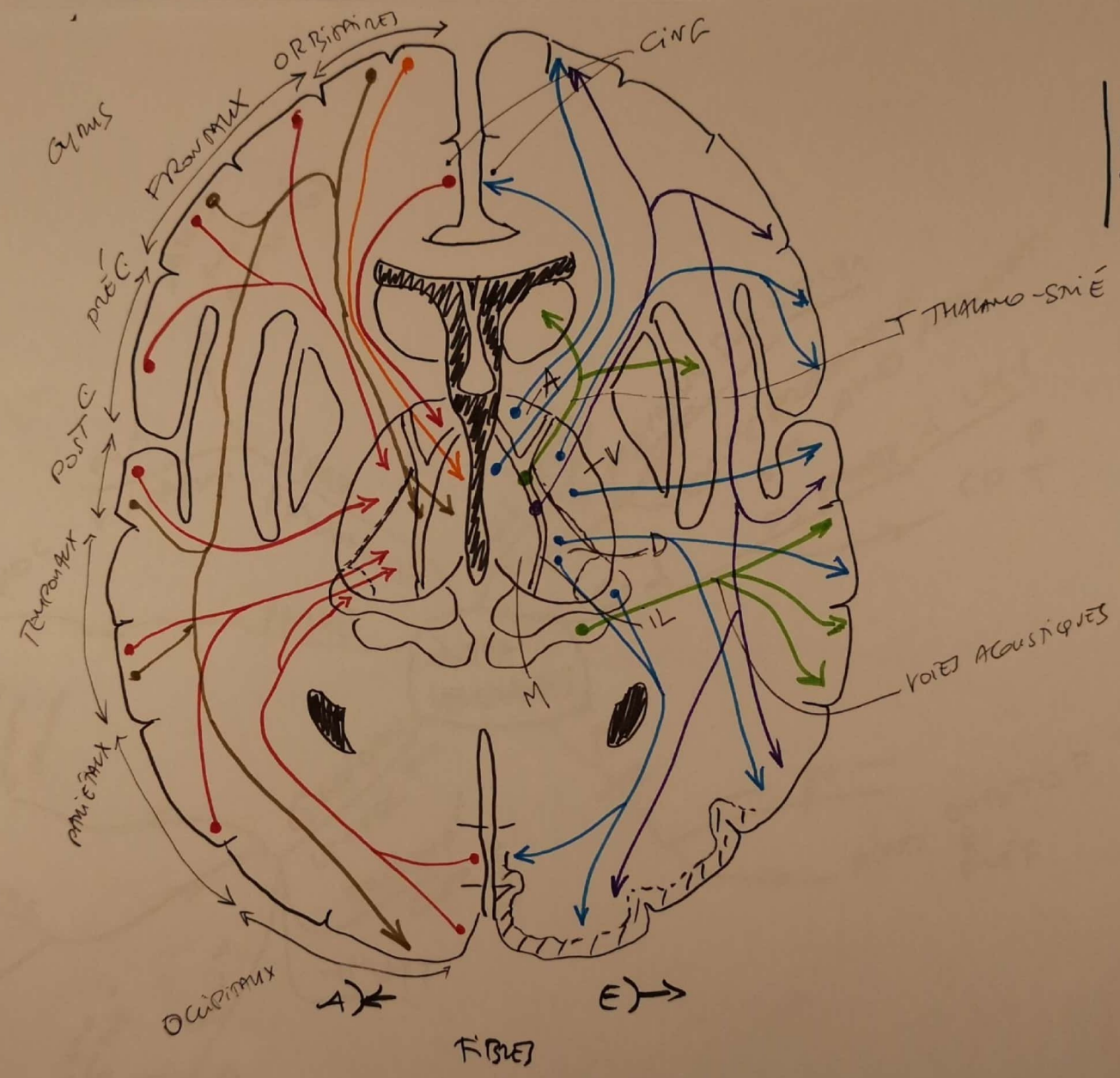
CBL, TSG
 NOT GATEX

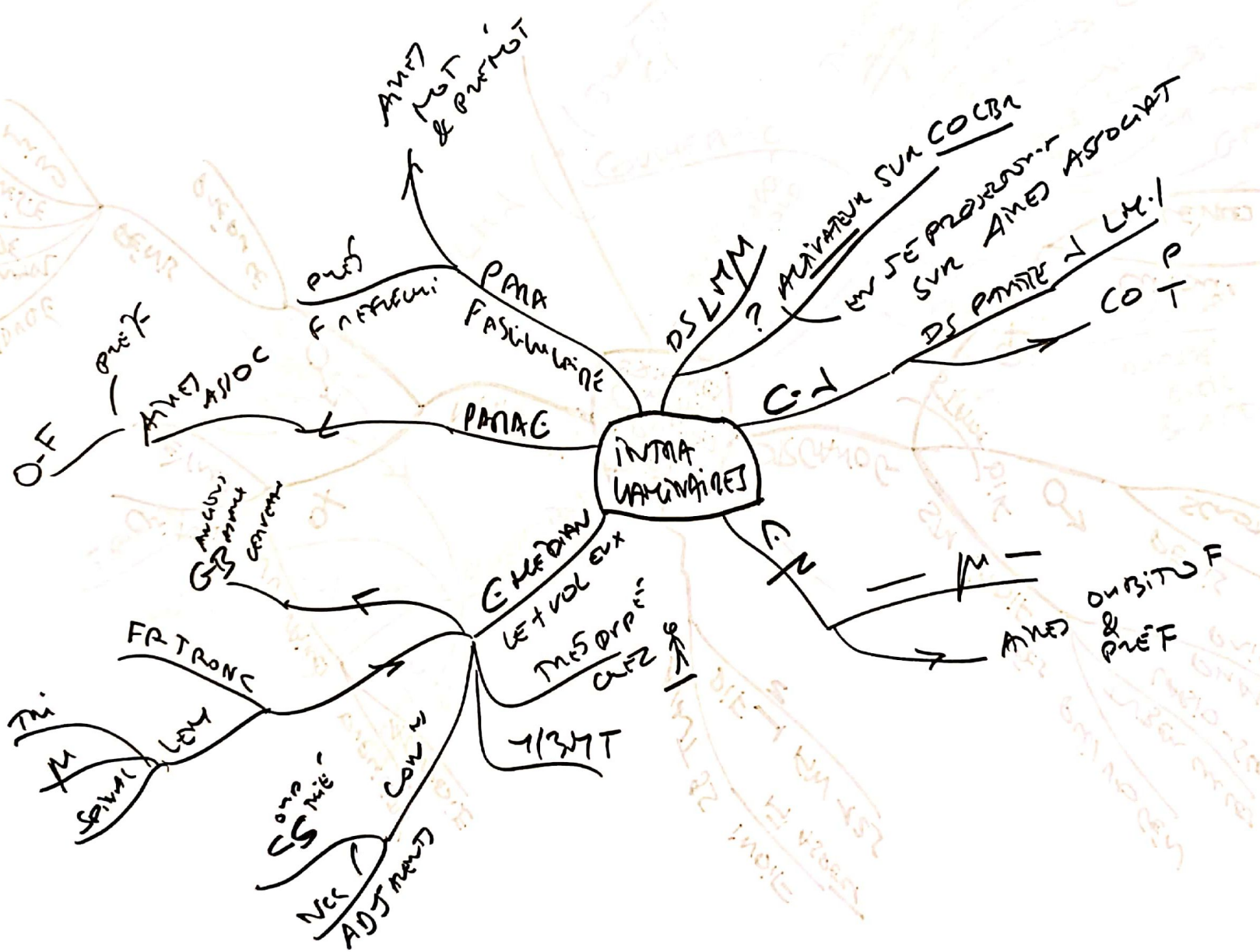
T SECTIONNE TRANSV ENJA LOWCANT

SOMATO SENSORY
 GATEX

26.6

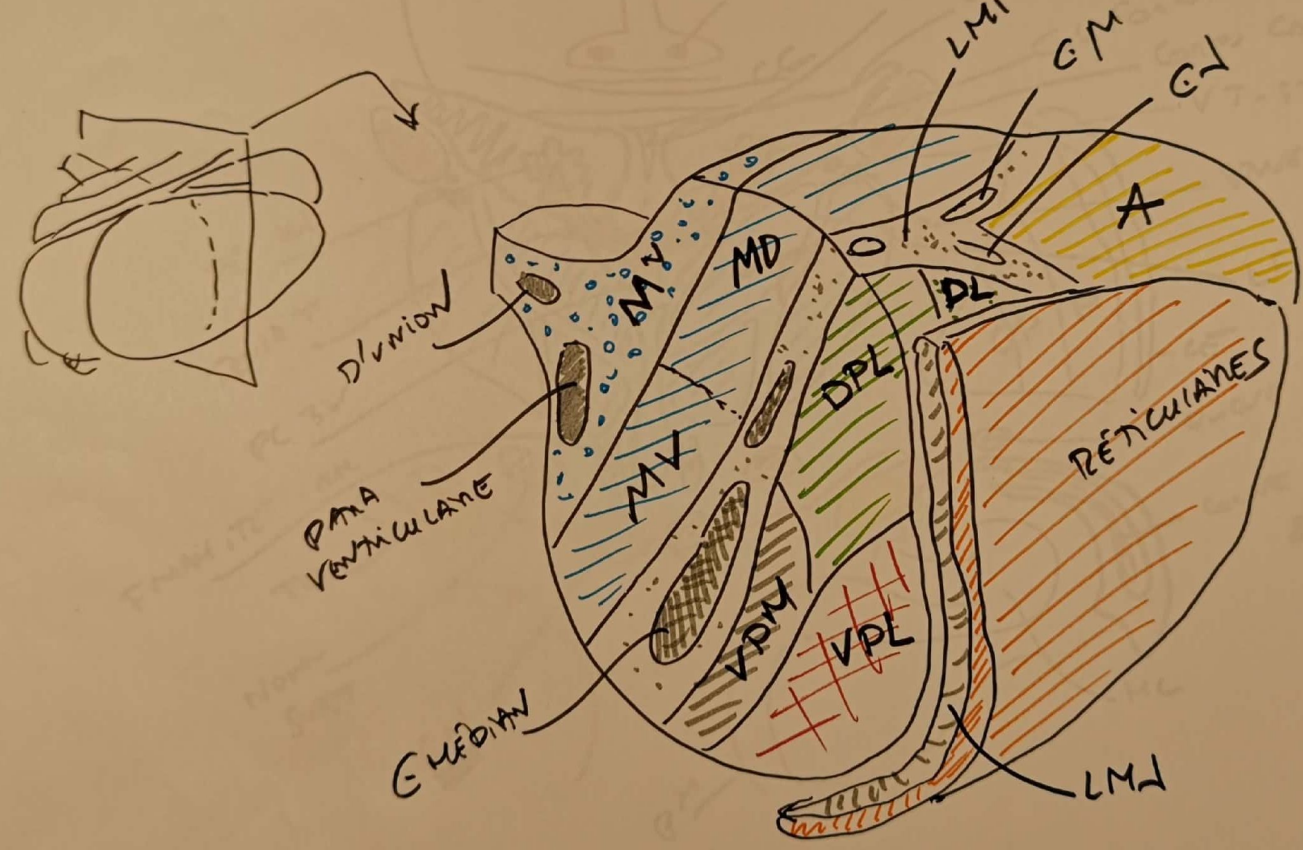
CONNEXIONS
CÉRÉBRALES
SCHEMATIQUES
THALAMUS







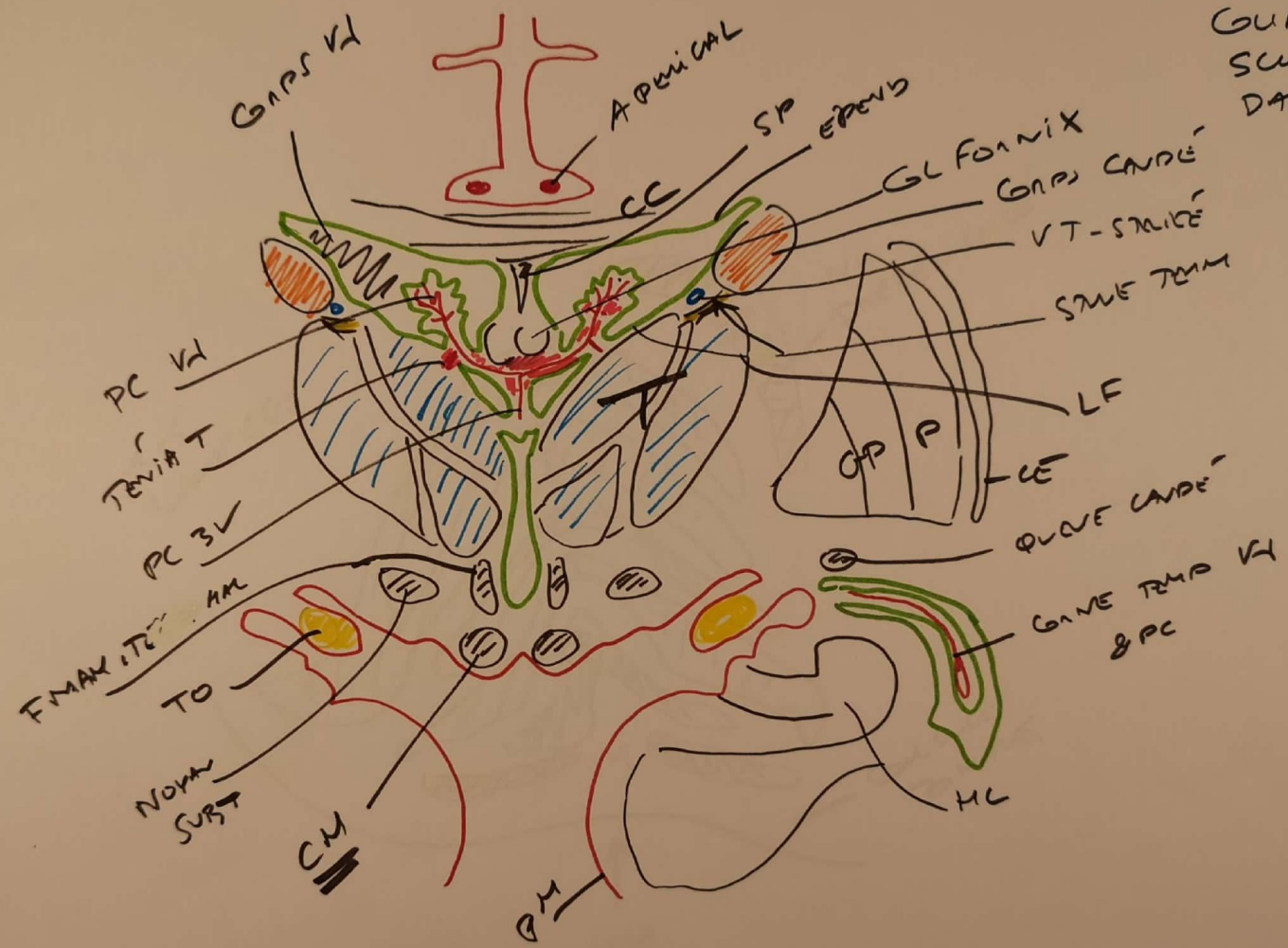
Nx
INTRALAMINAR ET
& ACCESSOIRES
PARIETAL
CORDE TRONCV
VUE TD



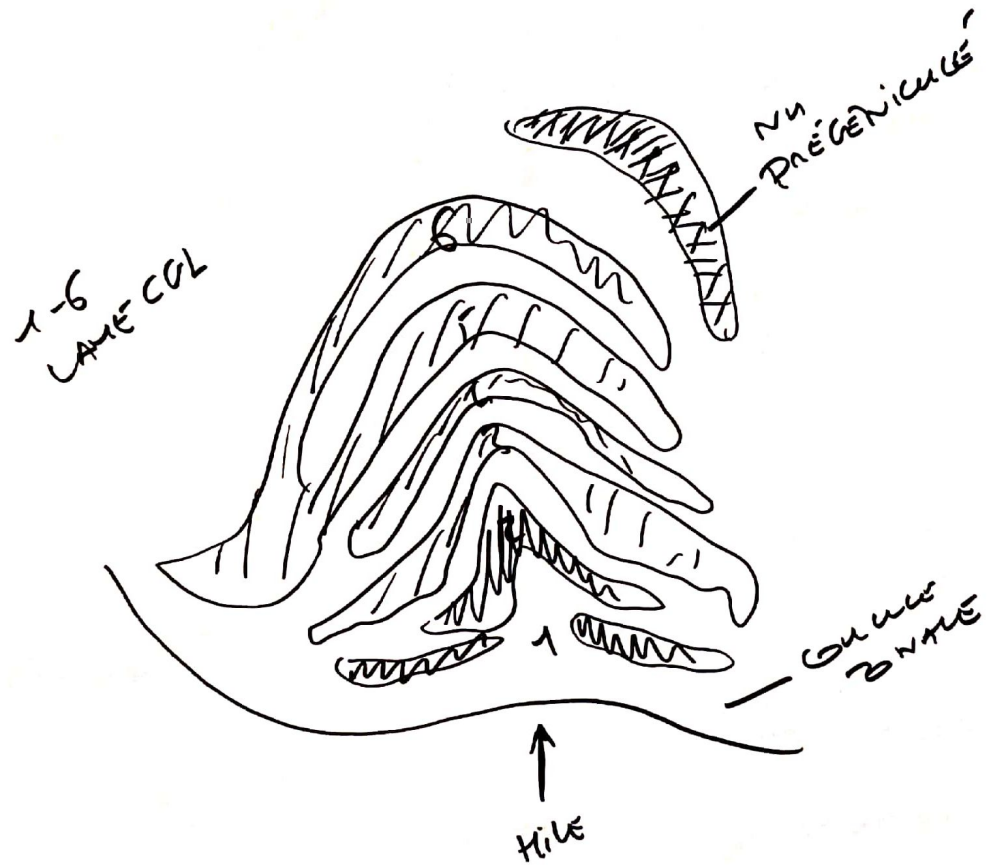
26.9

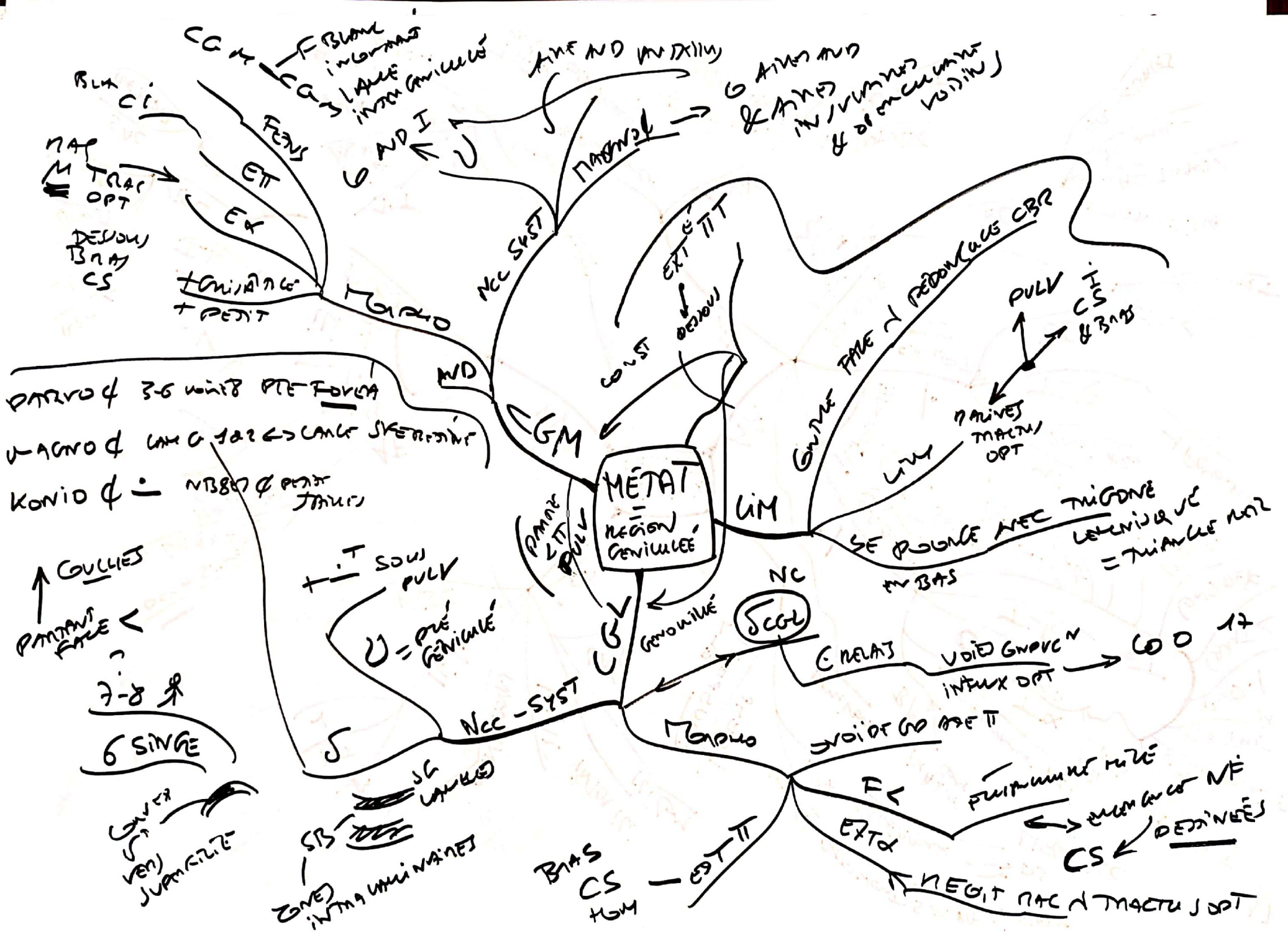
D'ENC

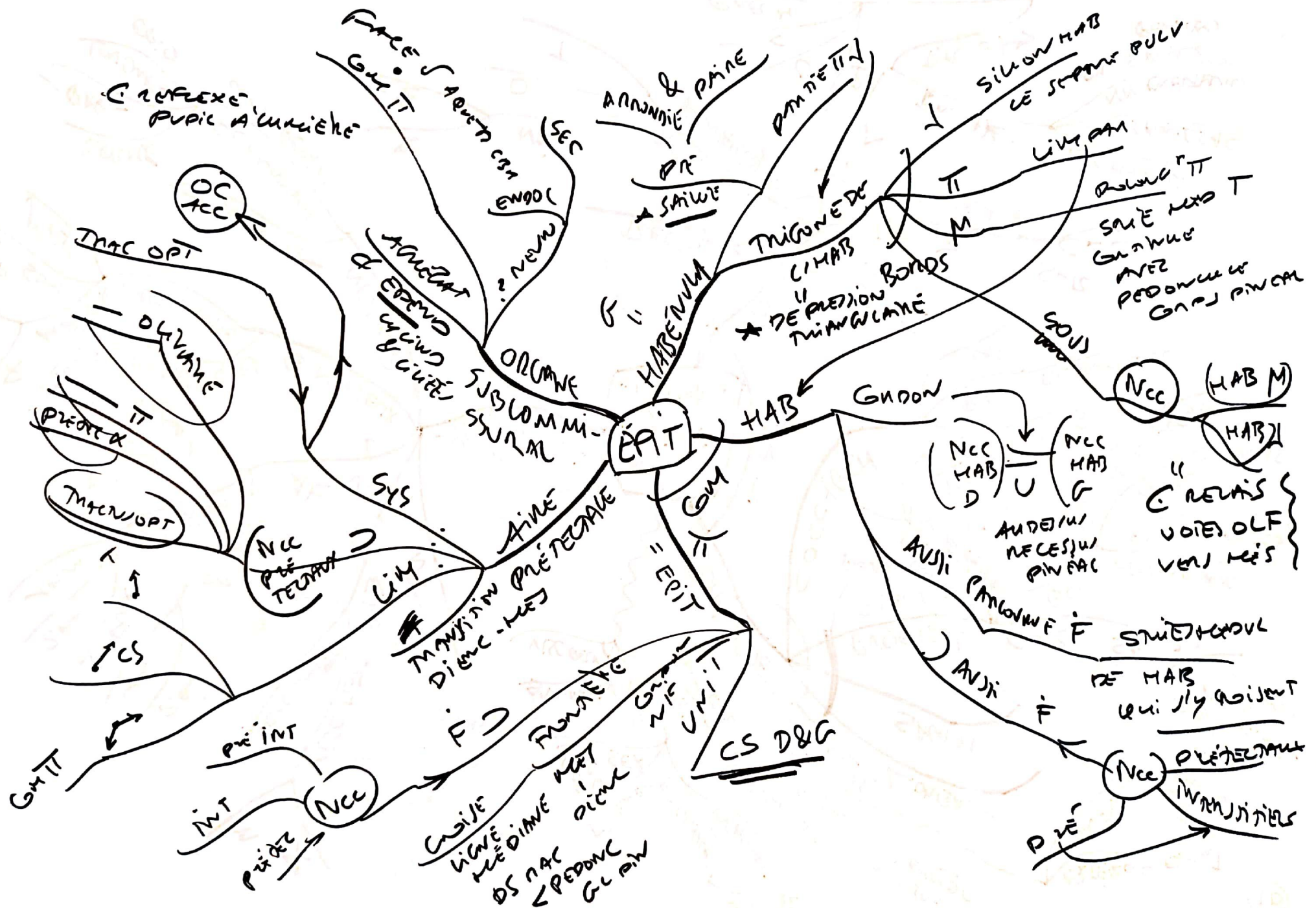
COUPE FRONTALE
SCHEMATIQUE
D'UN
CM



26.10
LAMINAR
NUM CCG



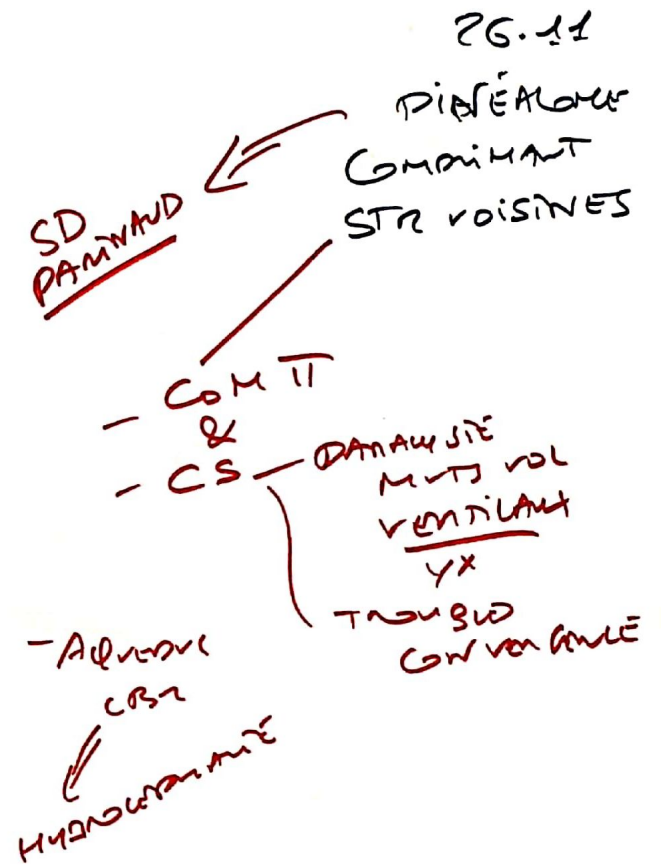
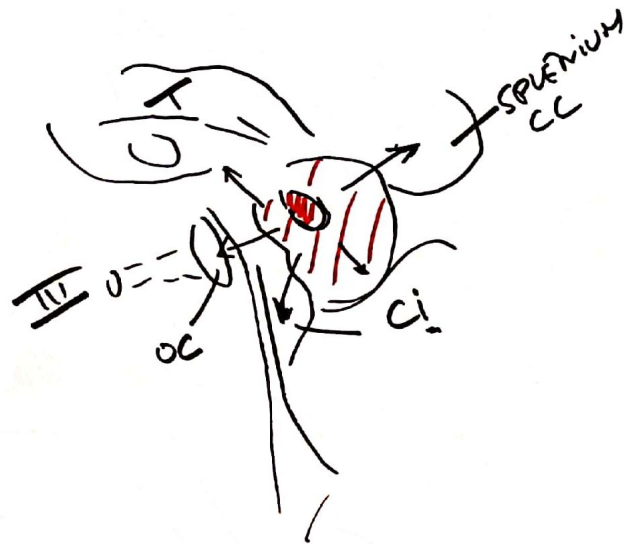


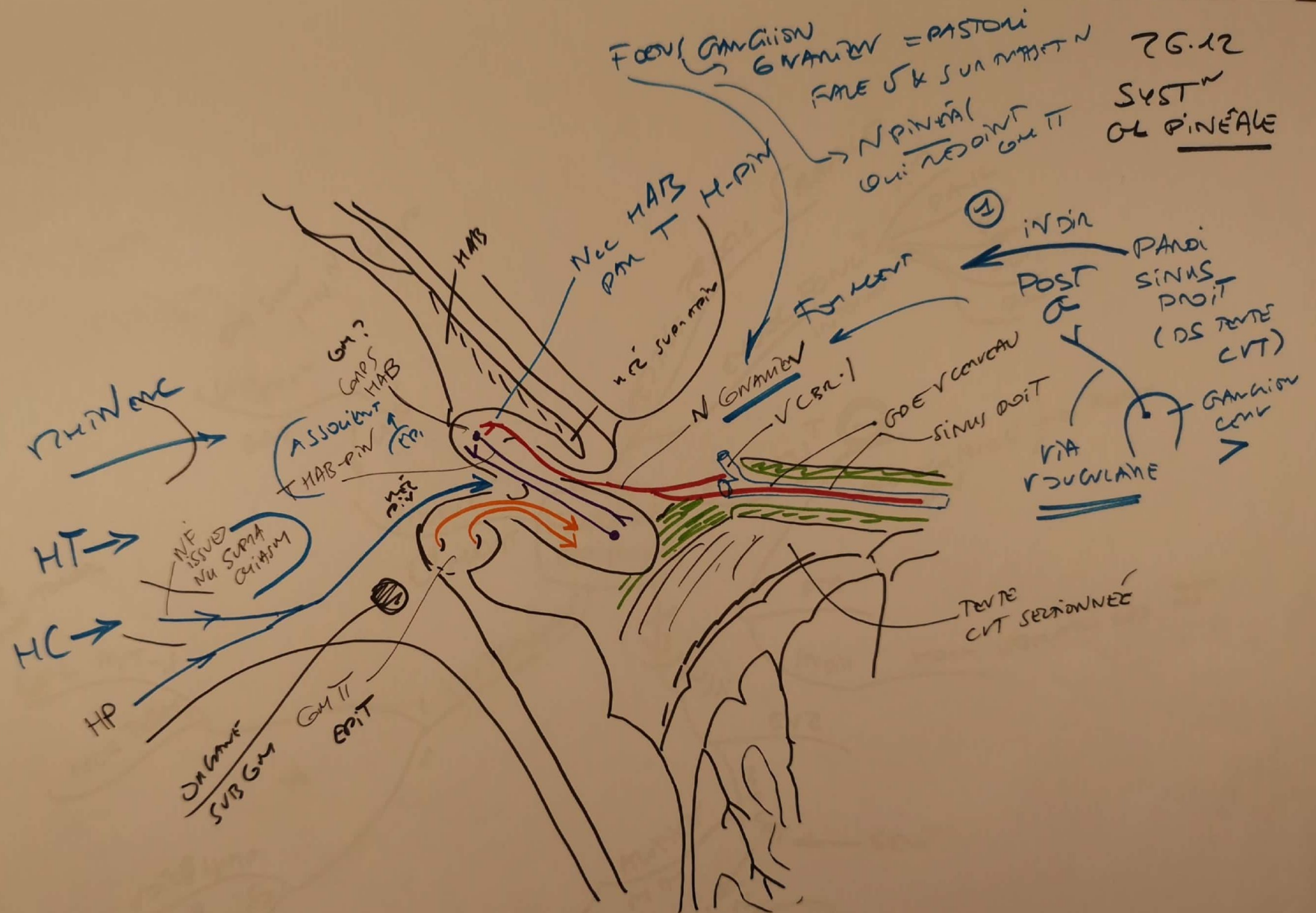


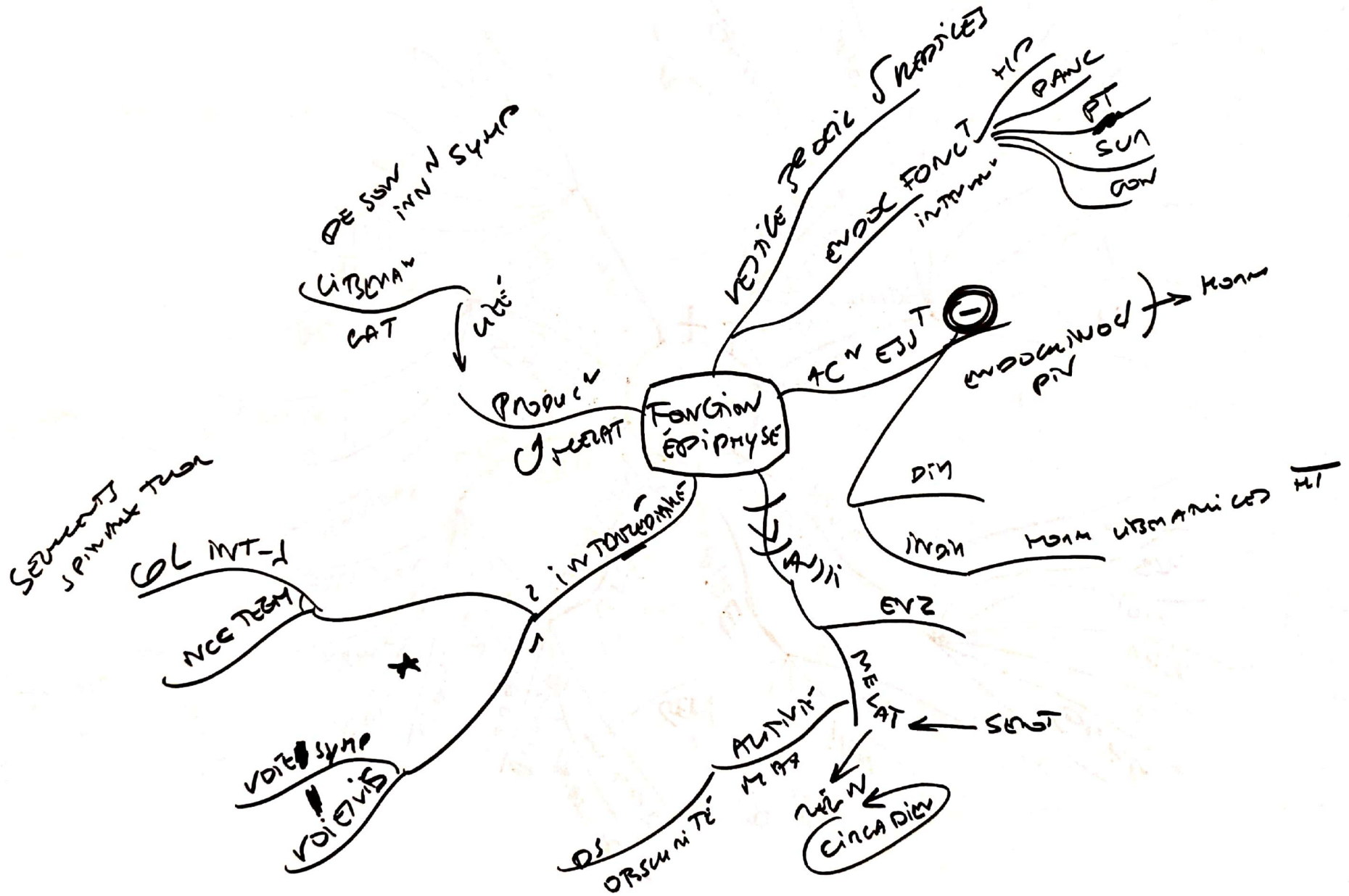
③ Sol. tréil
 ↓
 MURAT
 ↓
 INJONCTE
 ↓
 ?
 ↓
 SURTAGE

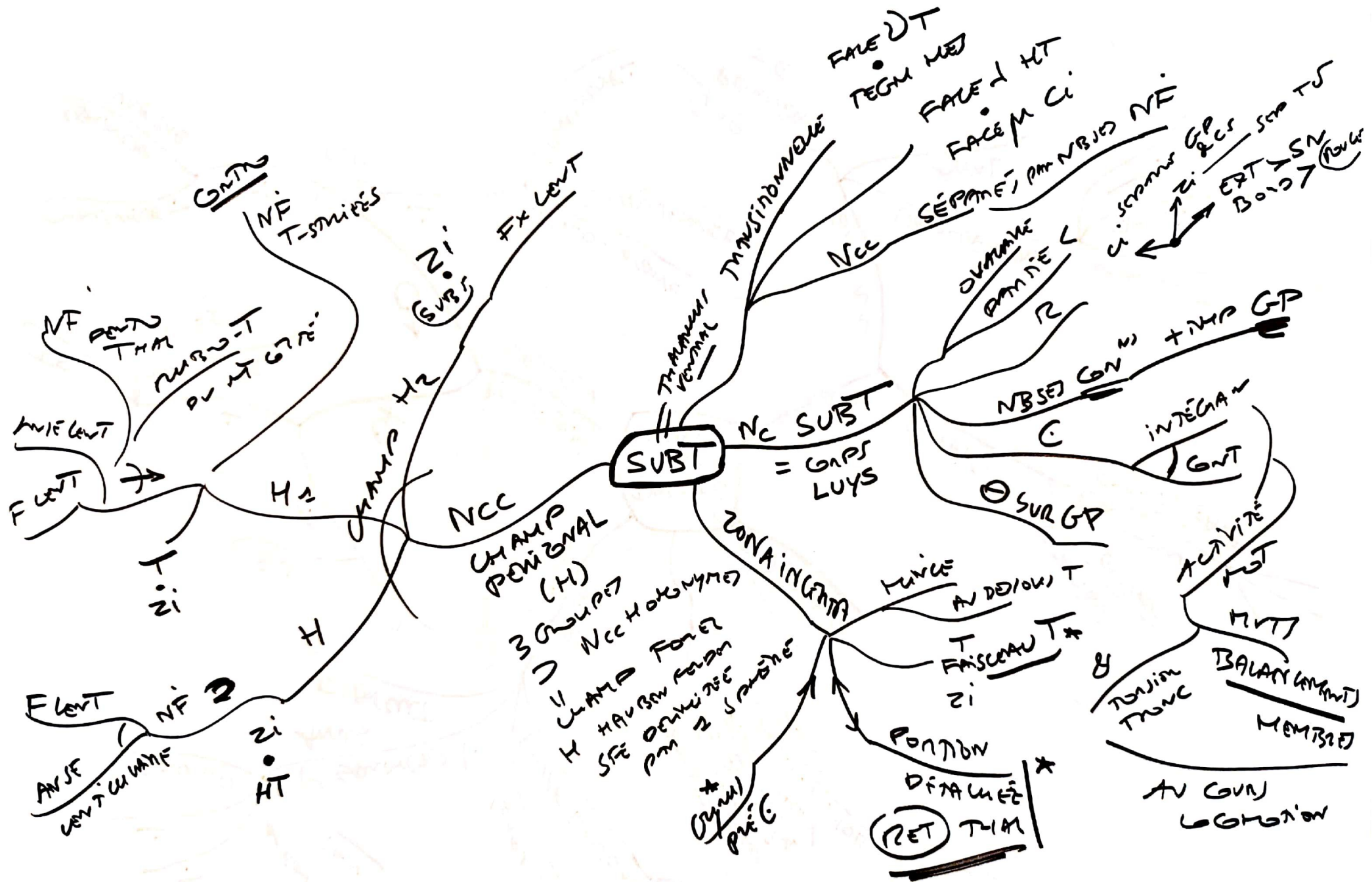
Corps AÉNALES
 DÉPOS. Ca & Mg
 20% AMV
 NEUROD
 INTRACOM
 CRIOD
 SPERMAT. DM



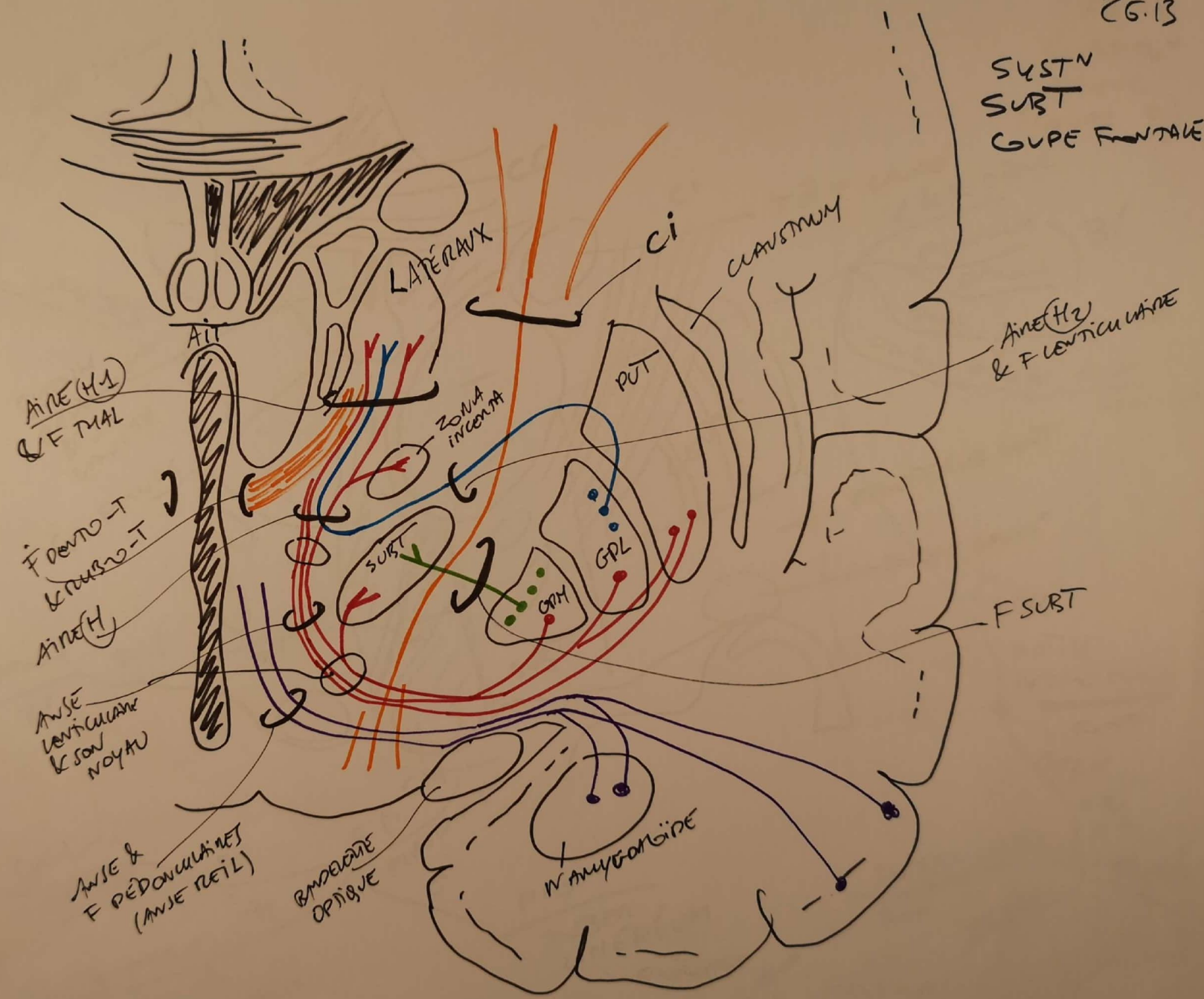






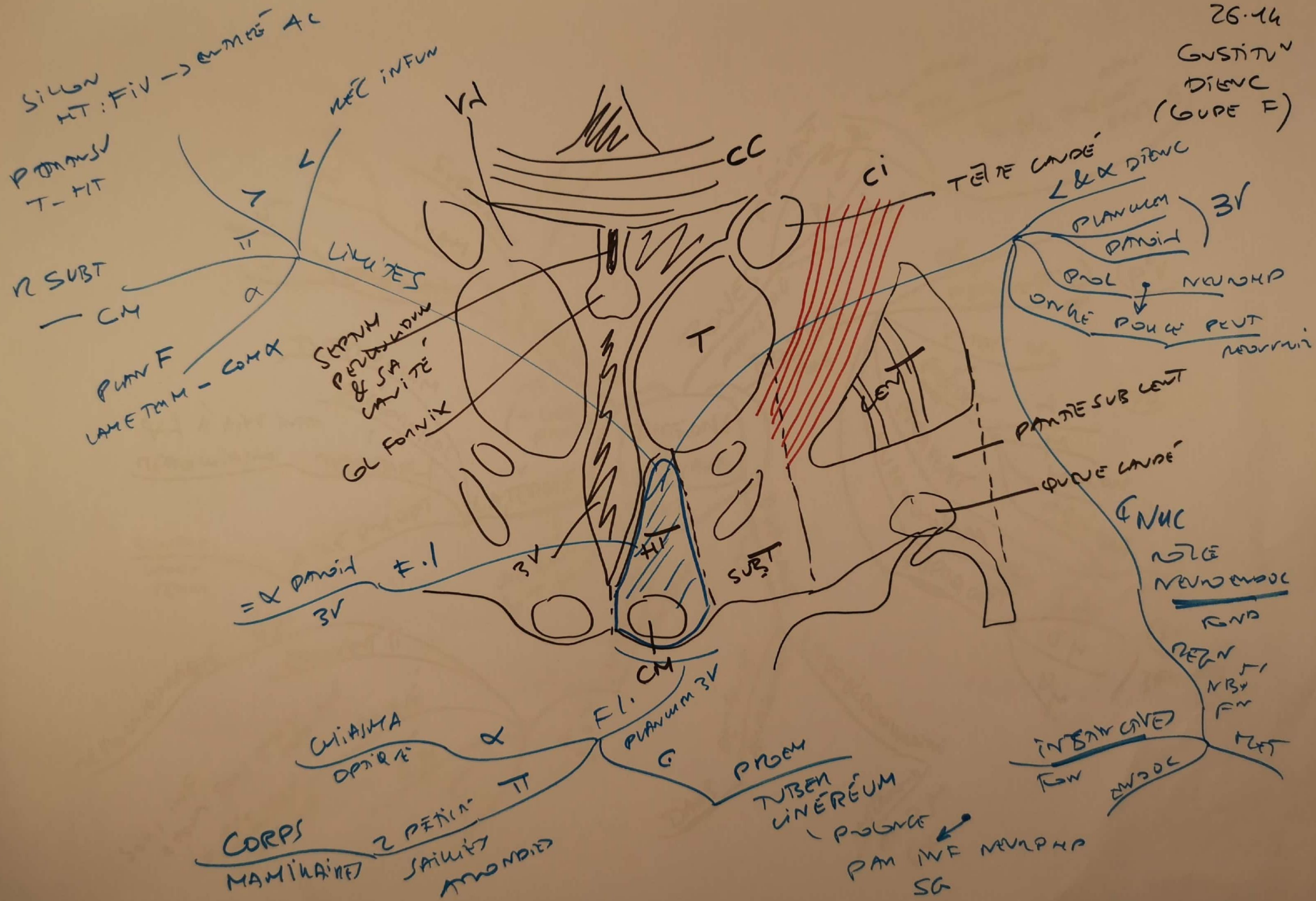


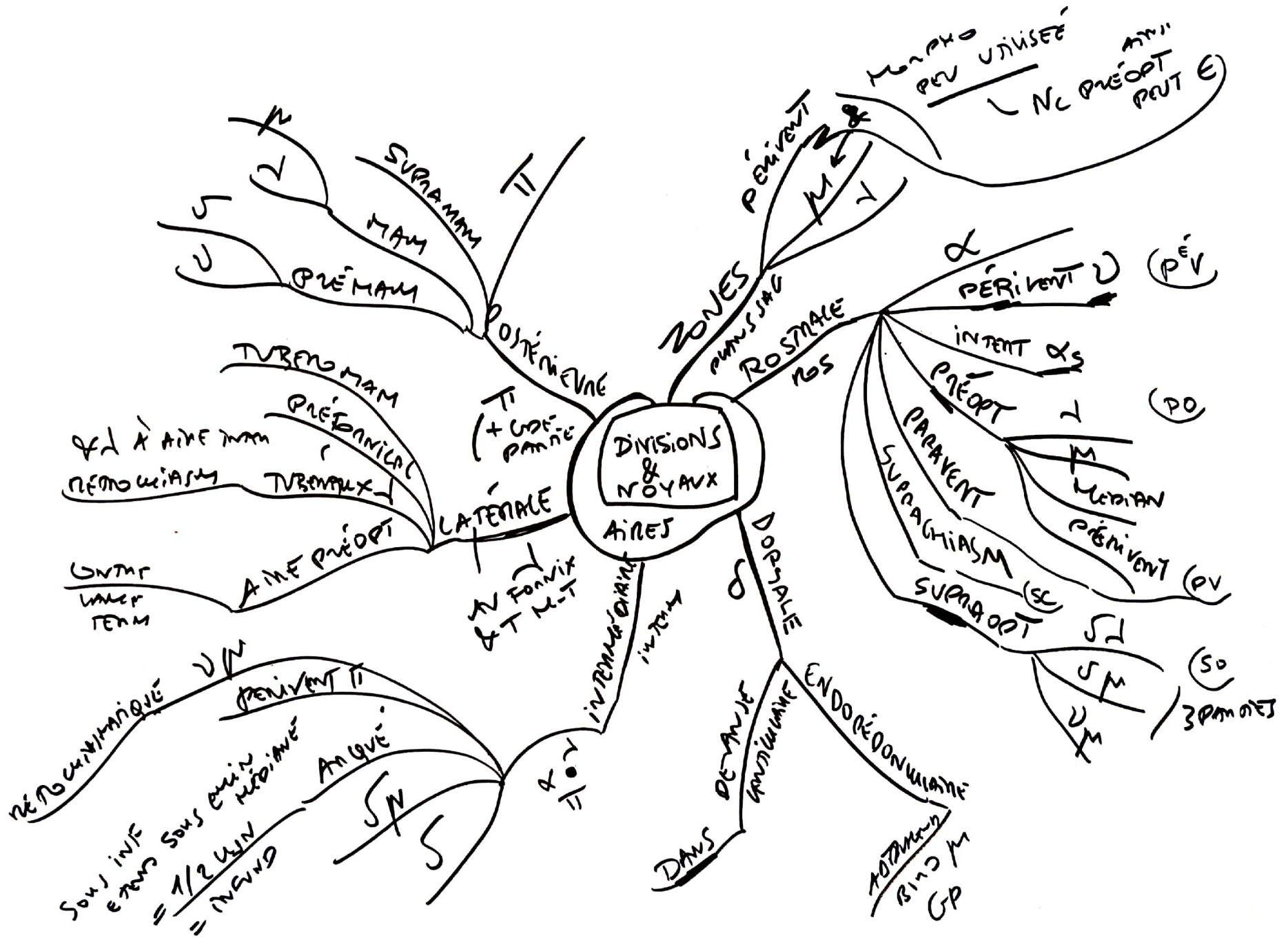
SYST^N
SUBT
GUYE FRONTALE



26.14

GUSTITIV
DIENC
(GUPE F)





26.15
NOYEAUX
(VUE
MÉDIALES)

AINE M
* Nu POU VENT

AINE SUBALVEOLÉ

LAME
TONGUINALE

CYRUS
PARATRACHIAL

A
ROSTRALE

A
INTERMÉDIAIRE

A
TI

ROUGE

FOMIX

A5

A7

AINE J

Nu
POU FOUVICAL

FMM-T

TUBER
MALLICARNE

A
PREDENT

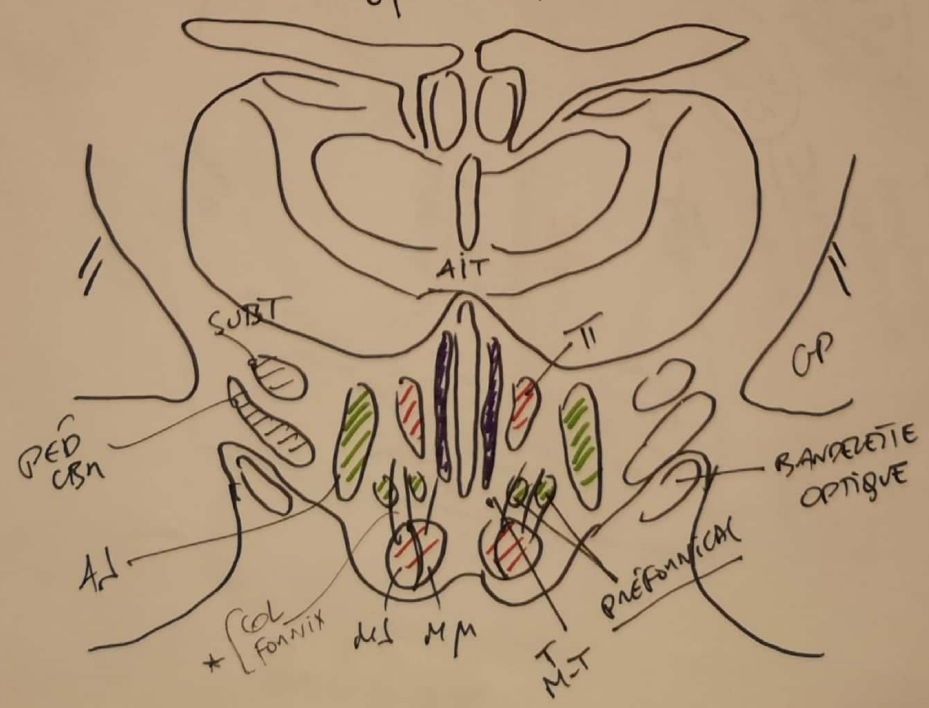
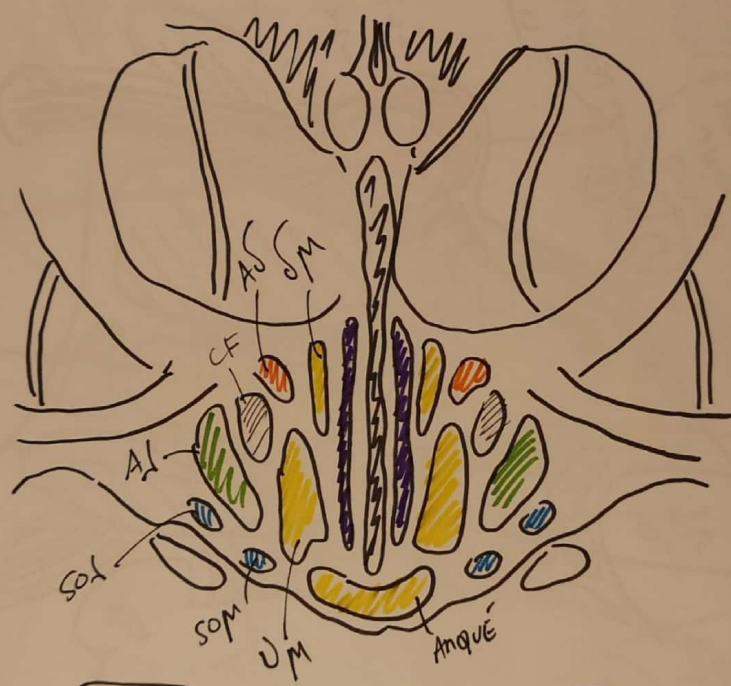
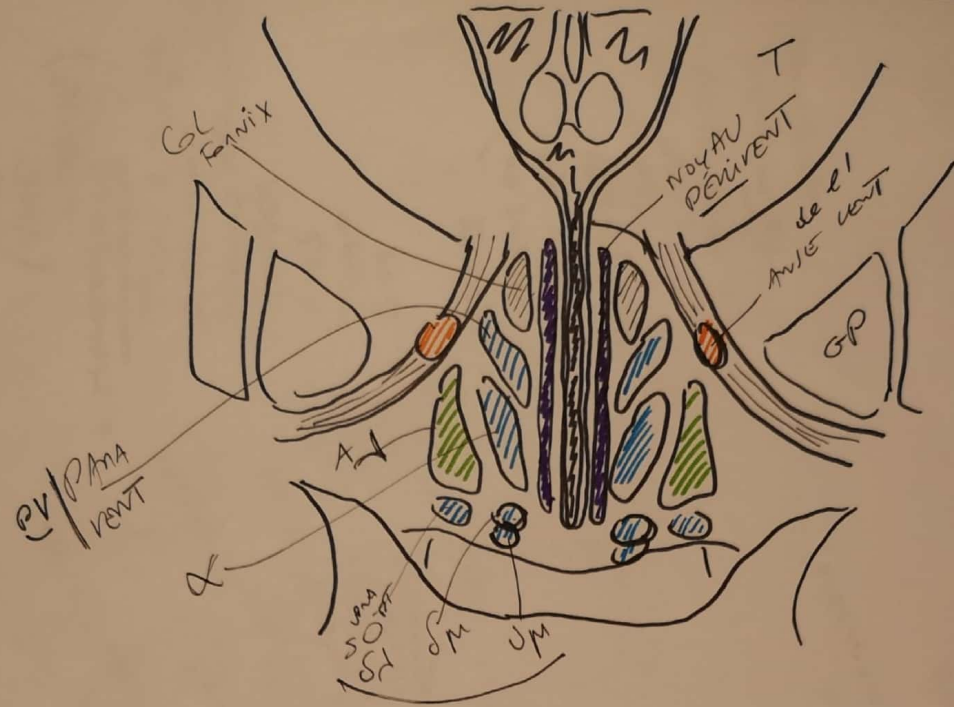
ALVARE
MEDIANE

TUBER
M

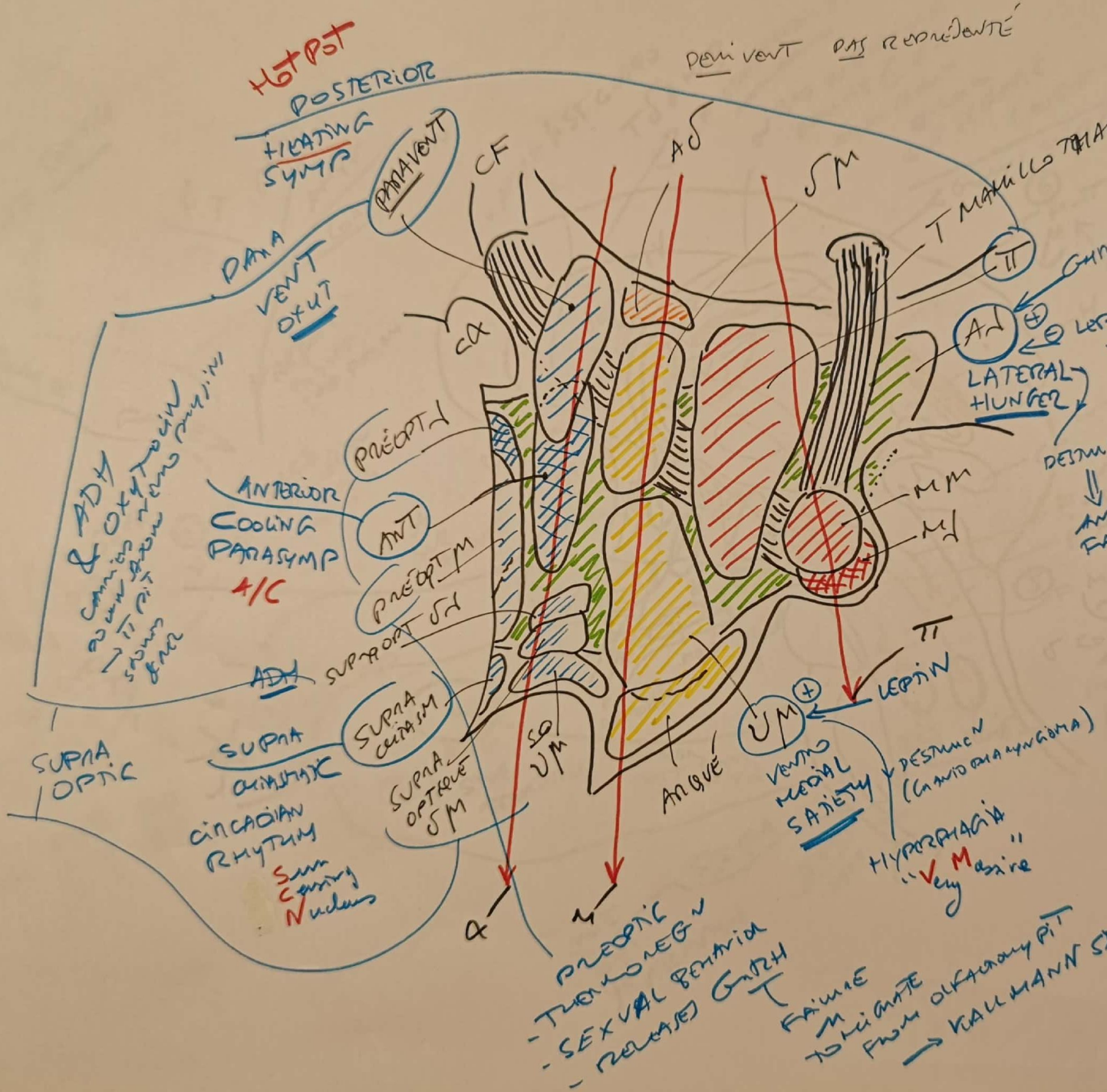
M

M

25.12
18
19
COUPET
FRONTALES



SO
ADH
XOPV



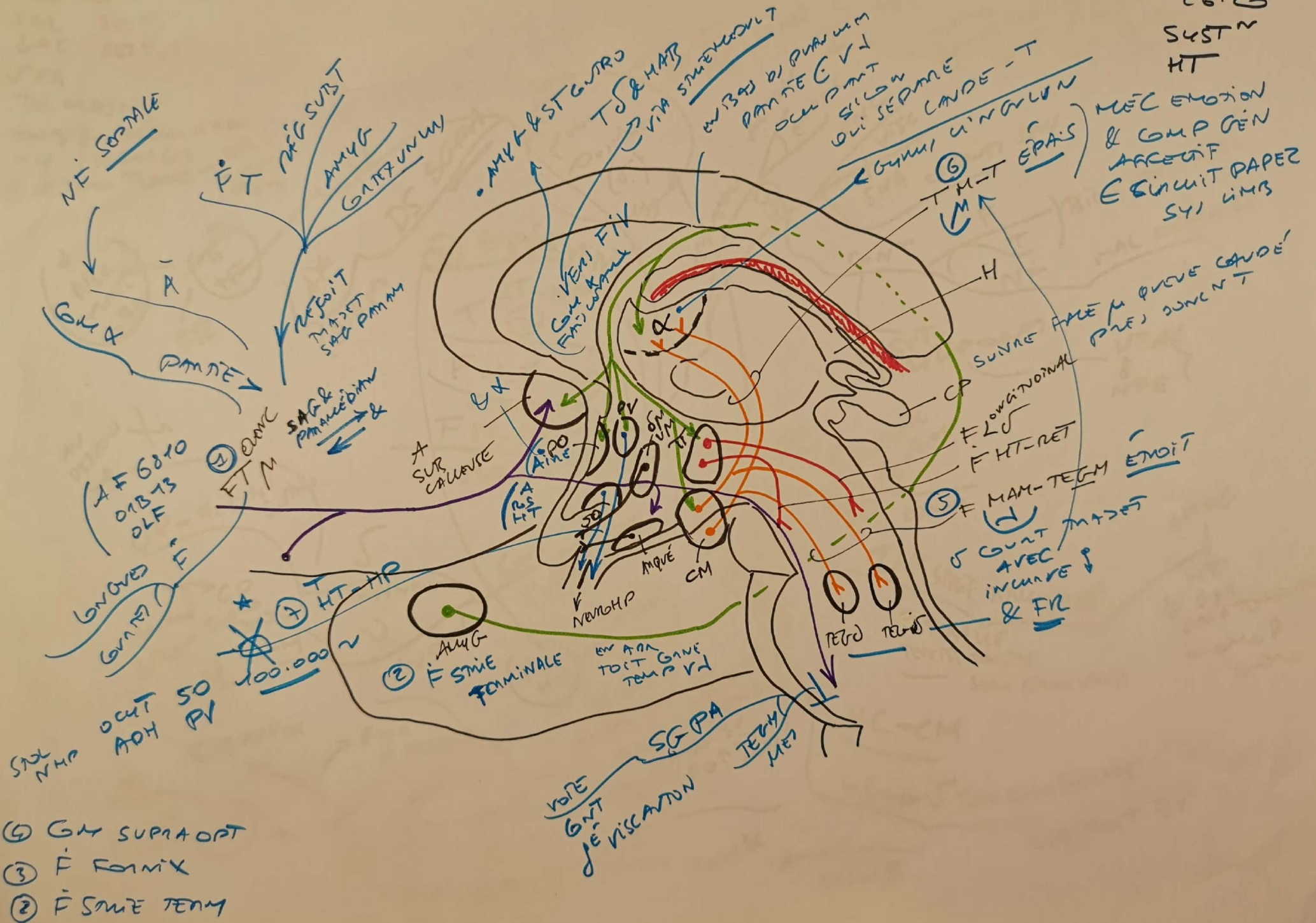
peni vent pas redondante

A=AINE 26.16
~~PENI VENT~~
(VUE INTERNE)

- HOMEOSTASIS
- Thirst & H₂O →
- ADENOHA
- NEURO HP → HORM
- HUNGER
- ANS
- TEMP
- SEX

- INPUTS
 - ARCAS PROTECTED BY BBB
 - OVLT (sense osm)
 - AREA POSTERIOR (stimulate → emetics)
- ↓ ANOREXIA FAILURE TO THRIVE (INFANT) BY BBB
- Leptin
Lateral injury makes you "Lean"
- DESTINE (GnRH/DA SYNTHESIS)

26.2
S4ST^M
HT



- ④ GM SUPRA OPT
- ③ F FORNIX
- ② F STIE TERM

- ACC OC MYOIS
- SAL SEC N
- SAC SEC N
- JVA
- TRI MATRIAY
- AMBIGN DEFUM NIM
- HY (LIZUAG) - CARS
- C VITAM TONE - REFR TAIM

