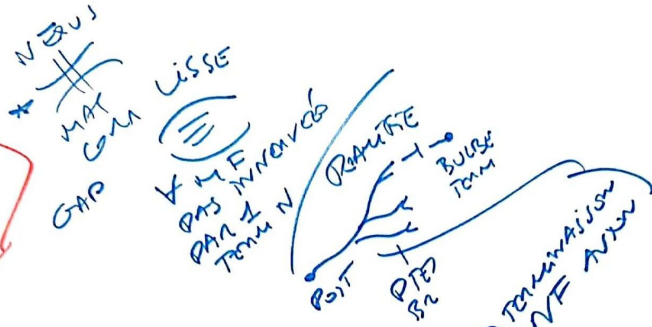


ORGANISME
 PS ANXIÉTÉ
 → MEGA GLOB
 NIRSUS ANXIÉTÉ
 GLOBUS
 PUSUS
 MUCOSUM



ORGANISME

ORGANISME

- GG - ANXIÉTÉ
- VISC -
- NY VISC
- PUSUS -
- & VASC



2
 NF (A)
 * VERBALE
 SENSIBILITÉ
 INTÉRO

- 3 (E) INTÉRO
- GANGLION NYANET
- * SYMPTOMATIQUES

ASSOCIATIVE
 INTÉRO
 ENTRE 2 OU
 PUSUS SYMP
 PUS & POST
 FUS APRES
 III FORMALDÉHYDE

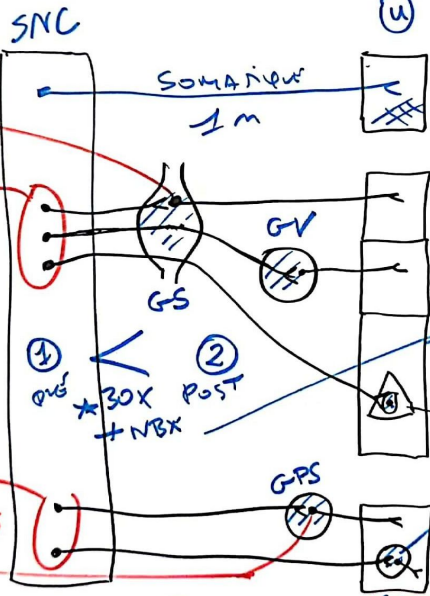
MIGRAINE IT
 → GLOBUS
 = TRUCUS ANXIÉTÉ

LAME D
 NBS
 REGION
 TERNI
 PUSUS

LAME U NBS

MIGRAINE
 OI ANXIÉTÉ
 VISUEL
 GLOBUS

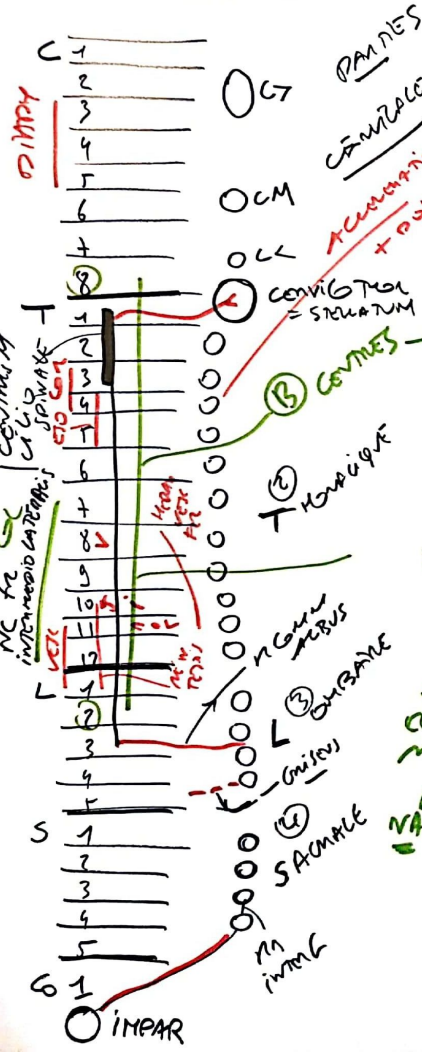
SAMAID
 NBS PUS
 OCCIPITO
 CAVILANTS



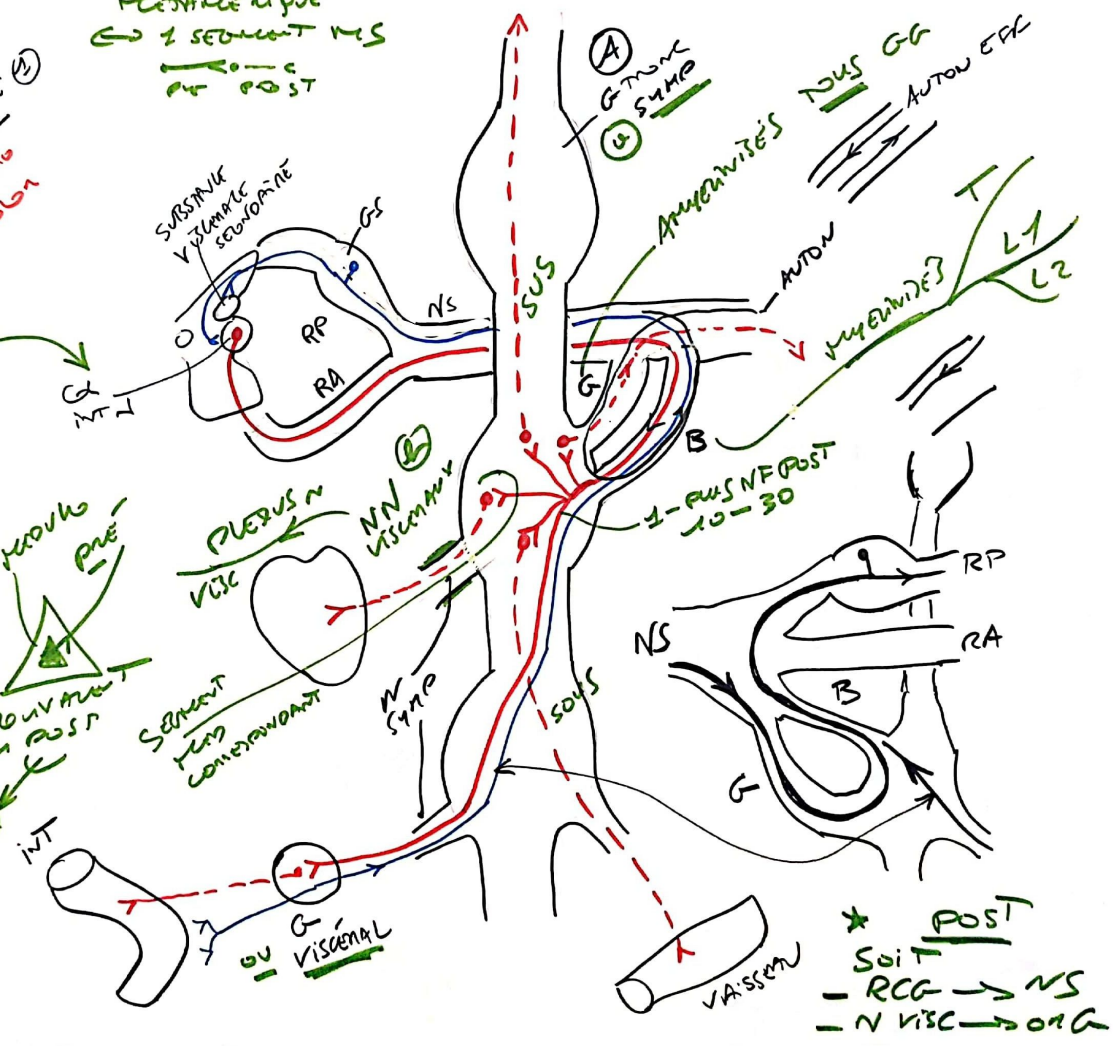
TERMINATION
 EFFERENTE
 GLOBUS
 & GLOBUS
 ANXIÉTÉ

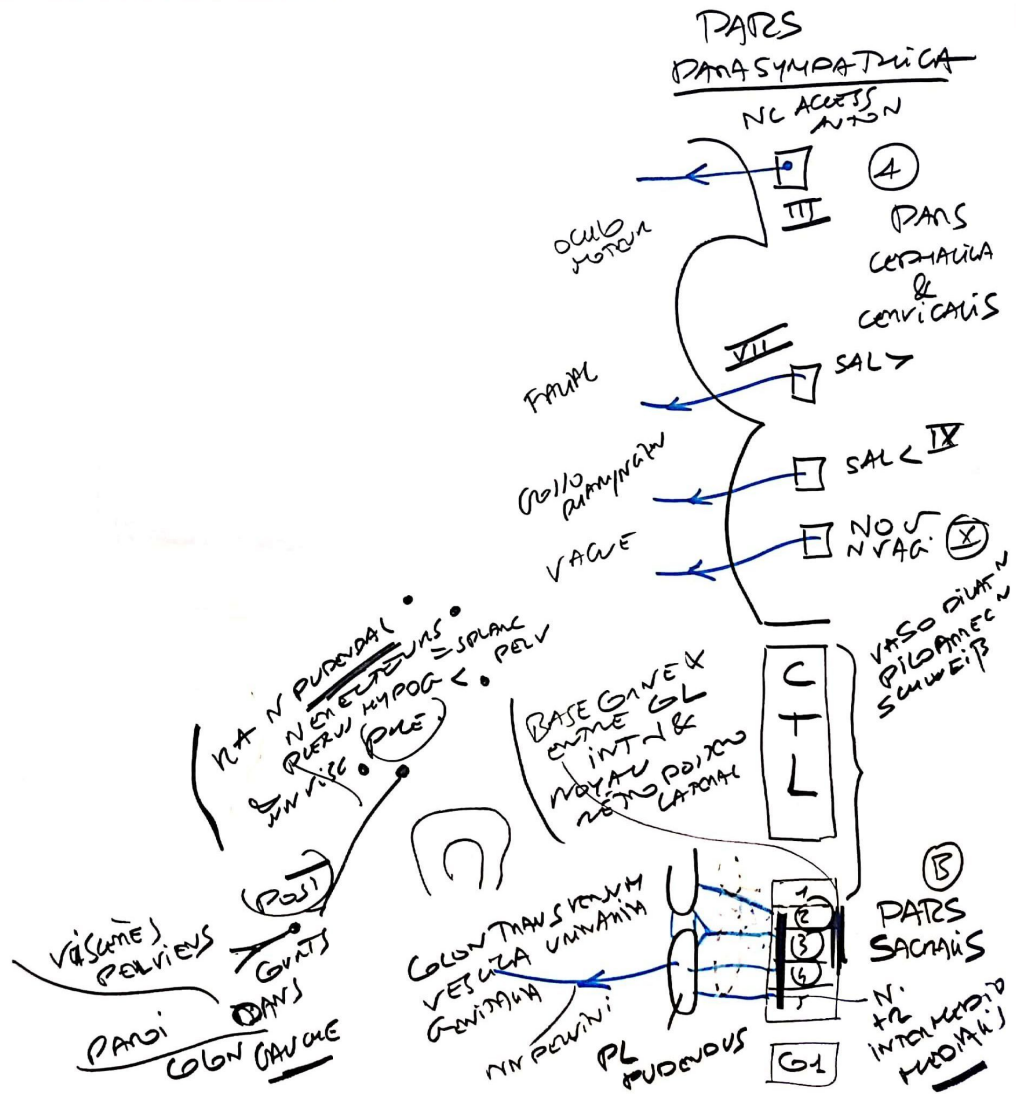
GLOBUS
 SAMAID
 EFFERENTE, d ou ON GLOBUS
 DEQUINAM

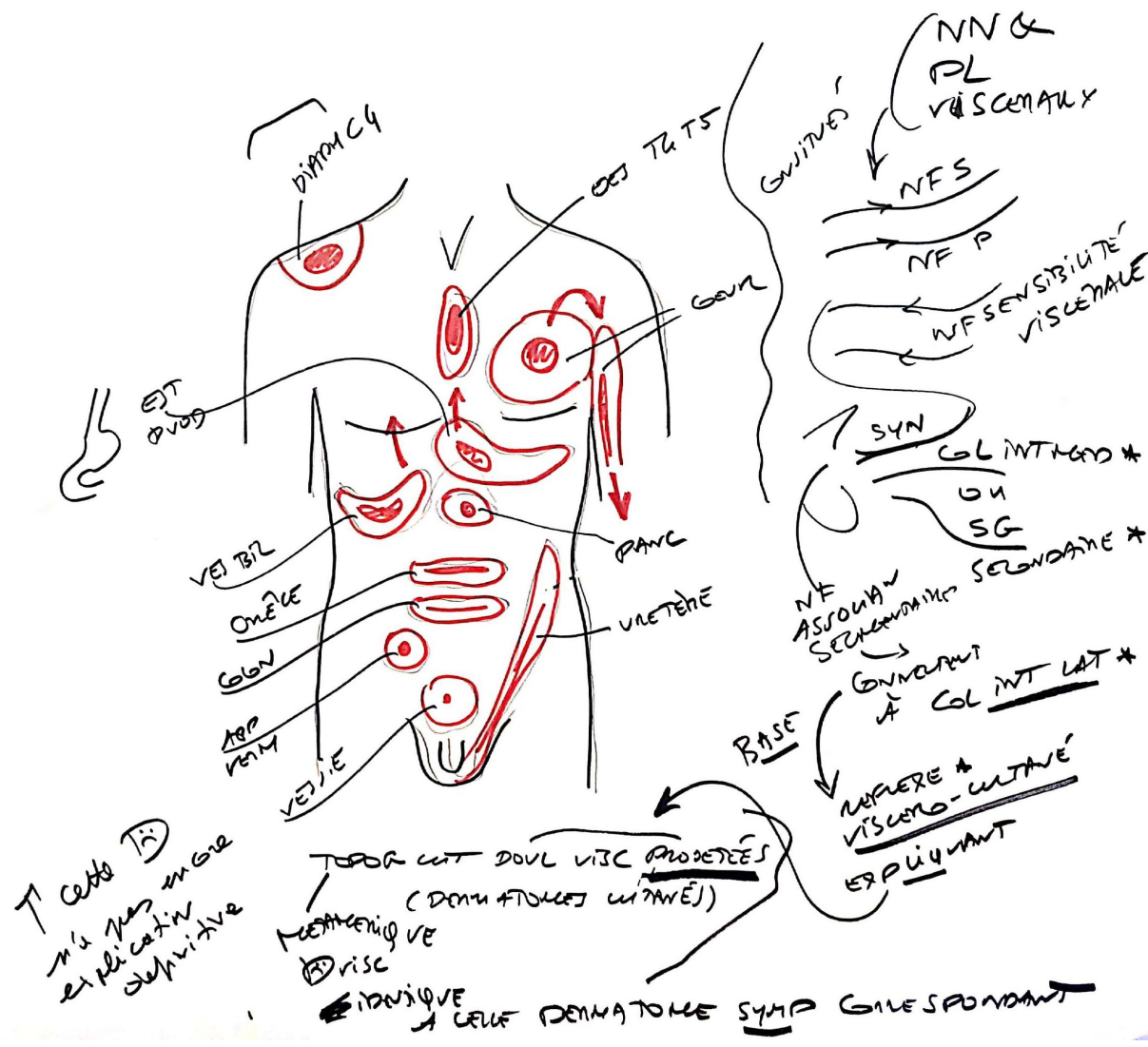
PARIS SYMPATHICA

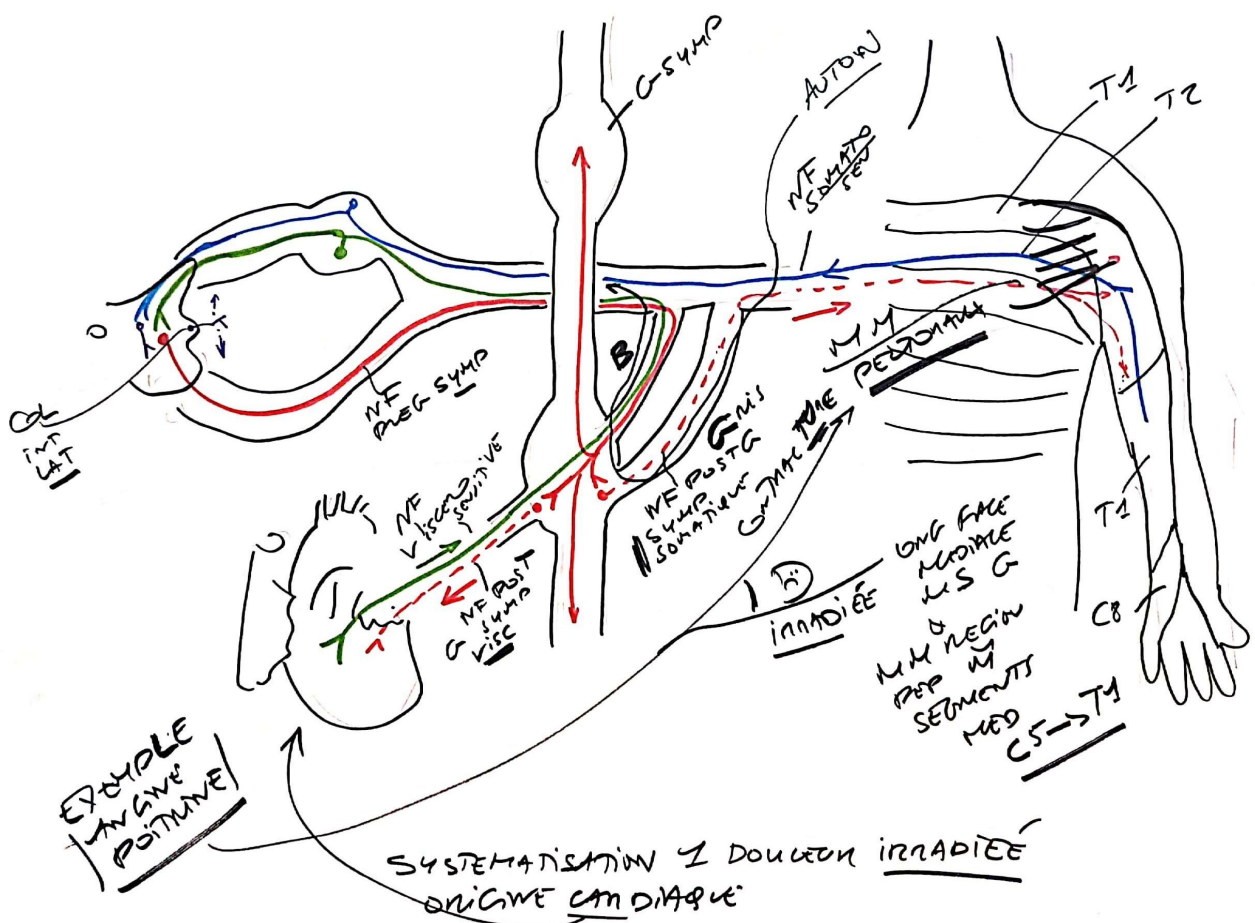


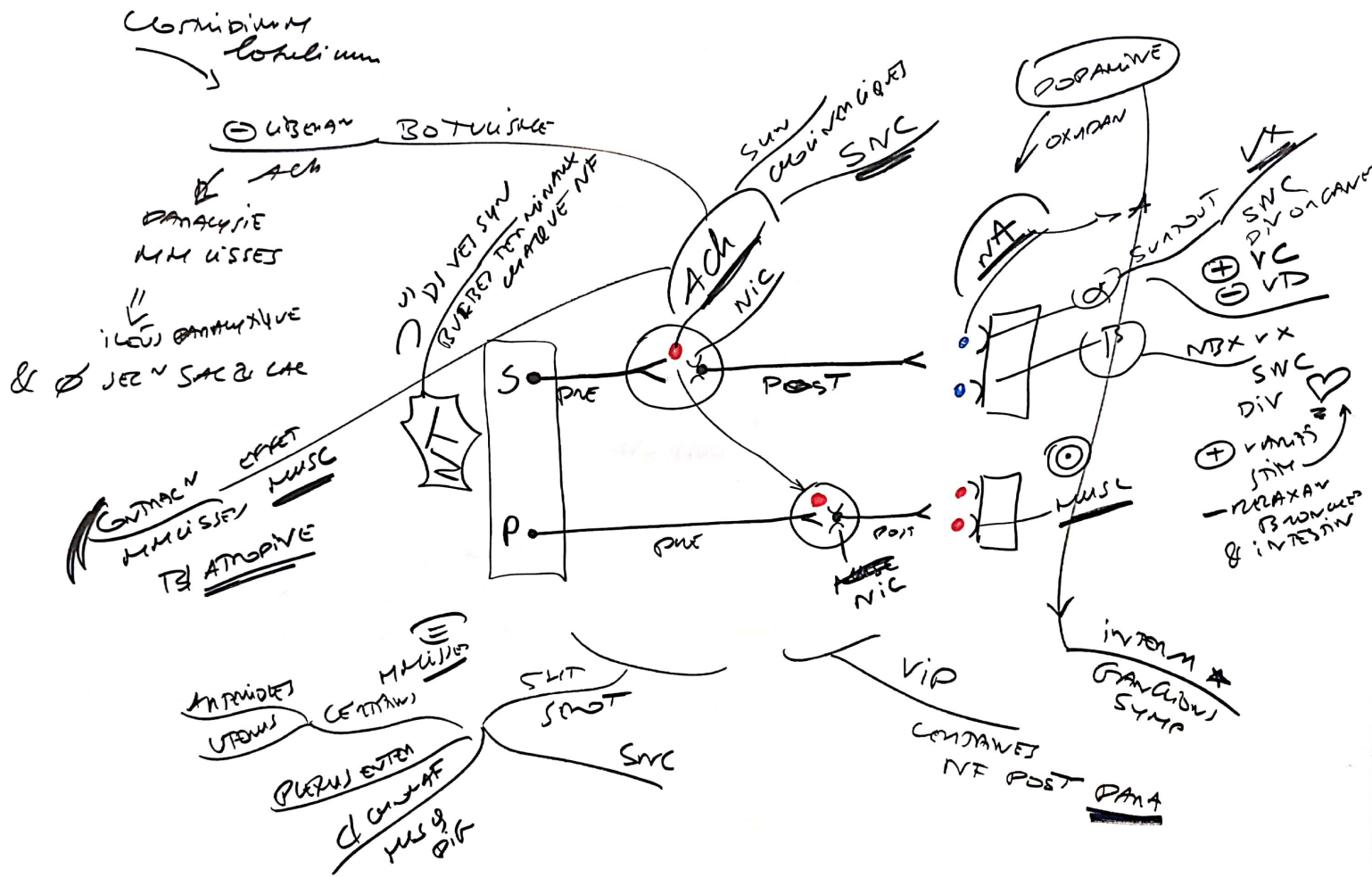
③ VOIES
MÉCANIQUE
↳ 1 SEULEMENT MES
← c
← POST

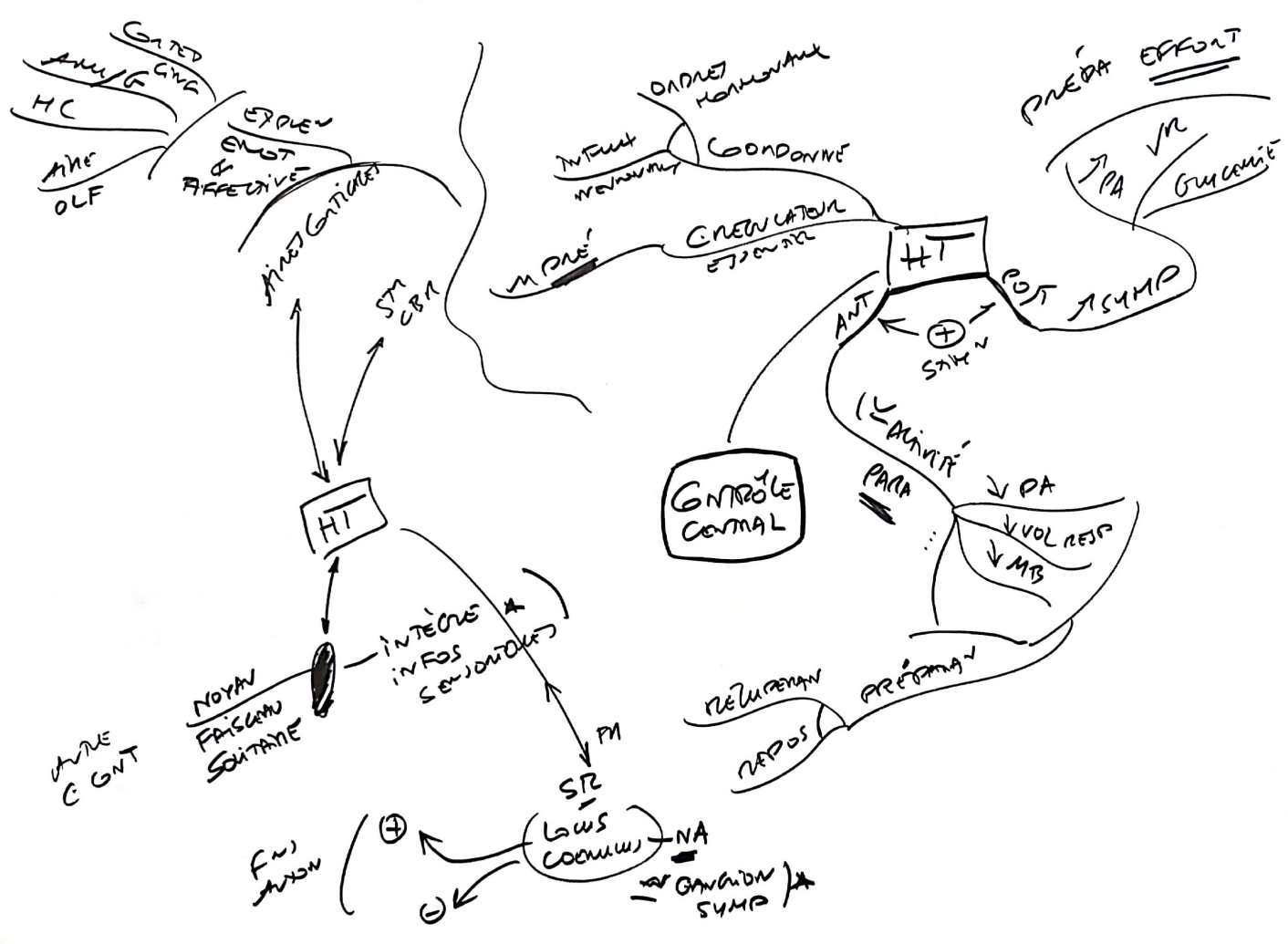


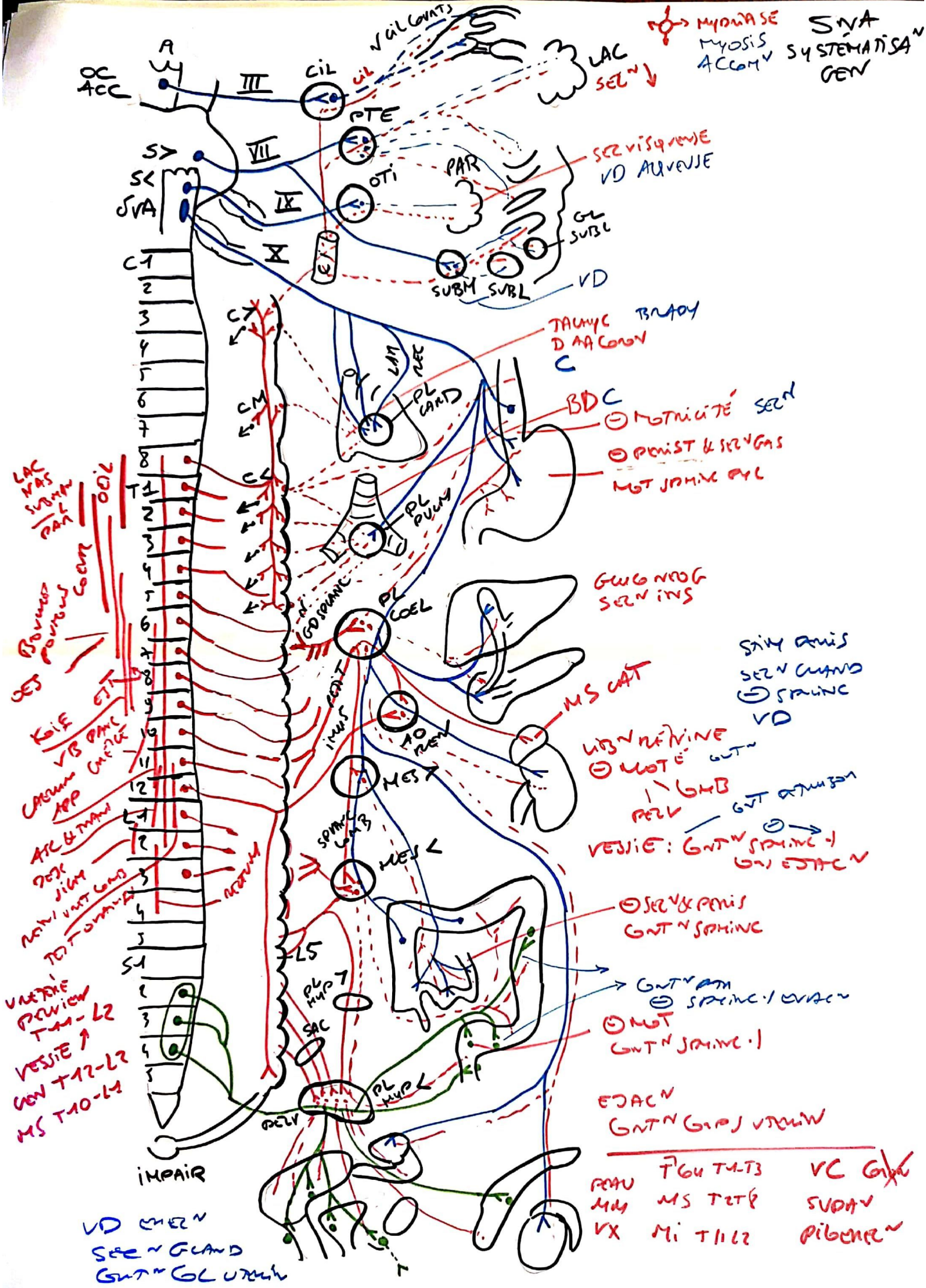


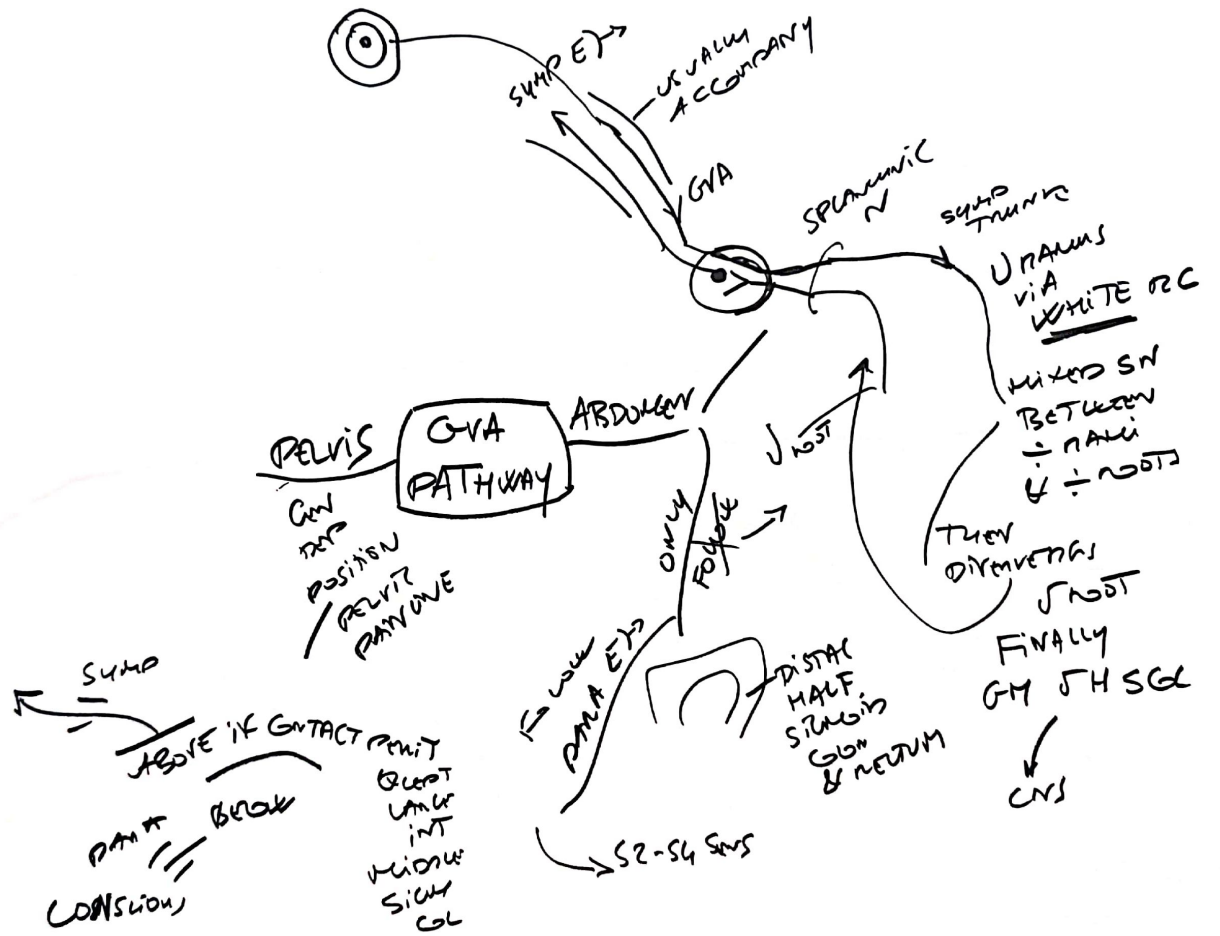


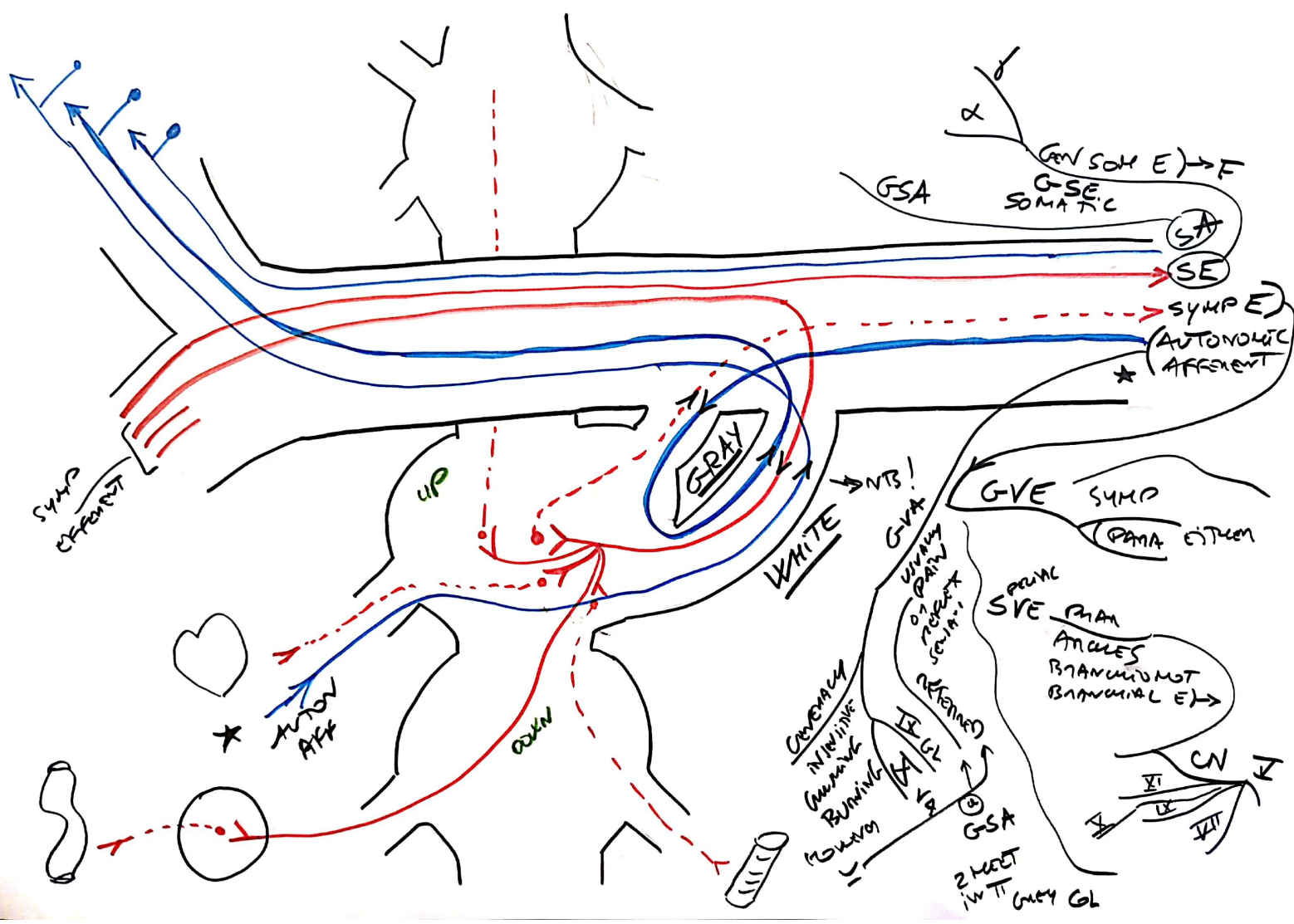


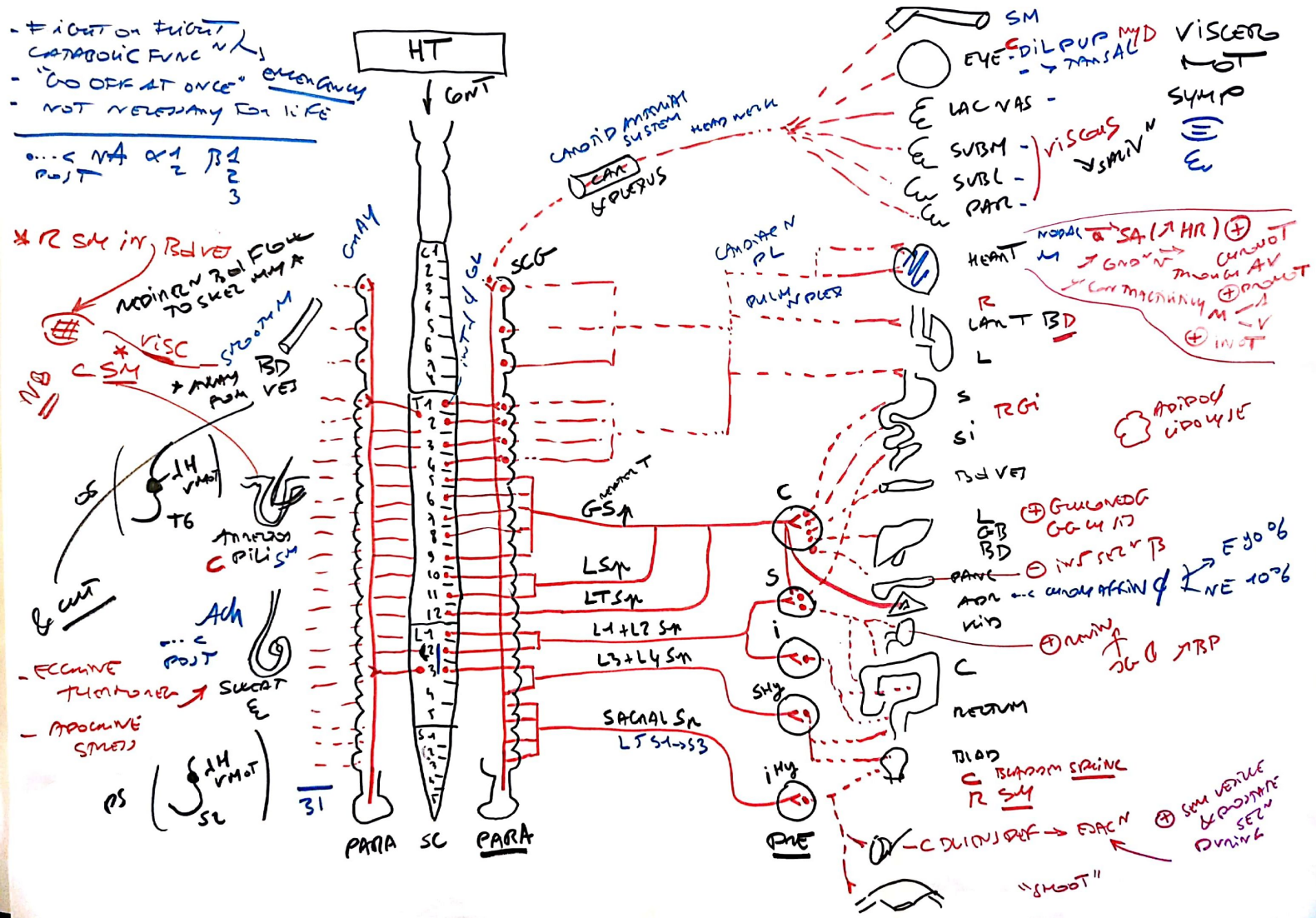


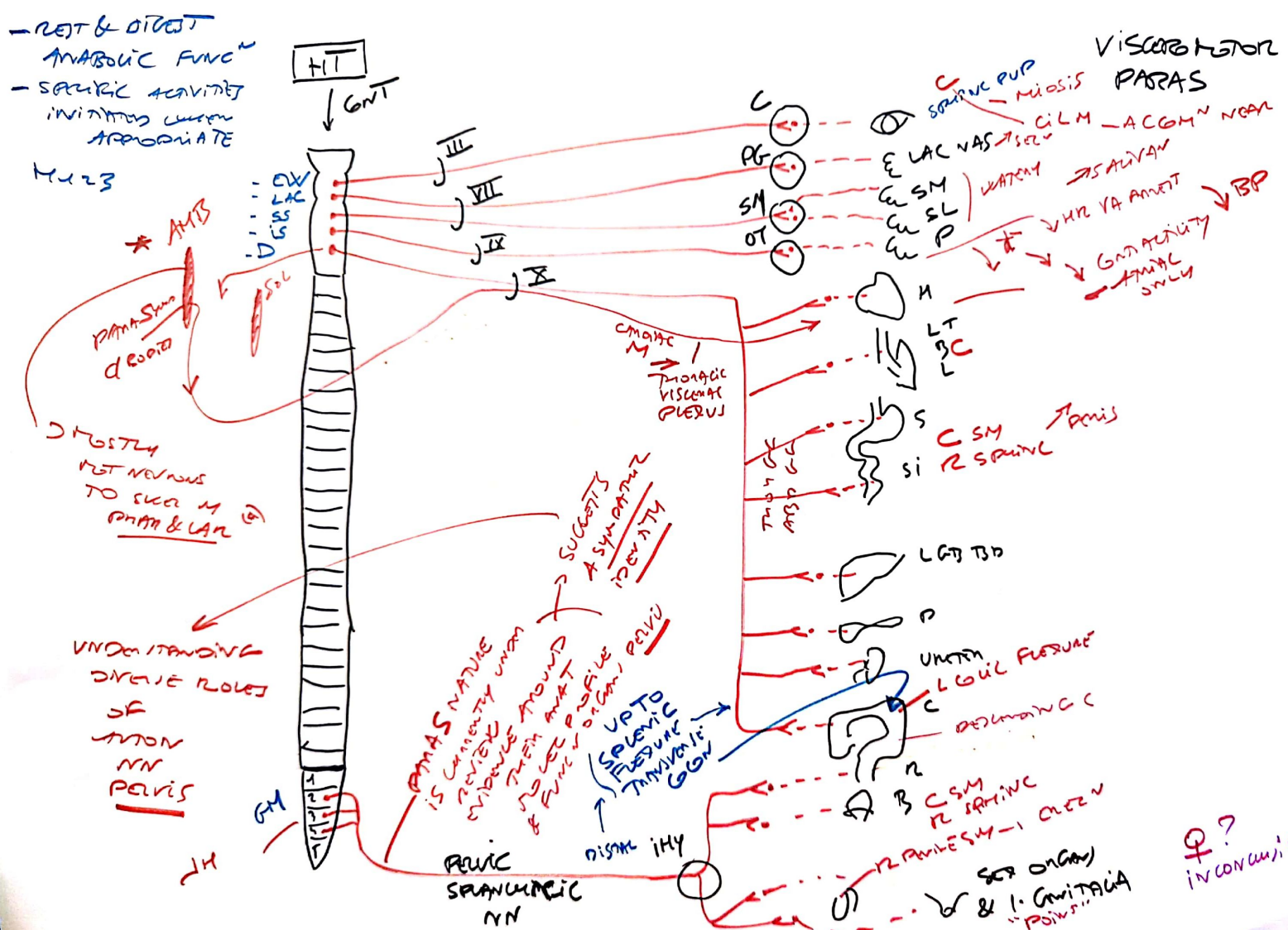


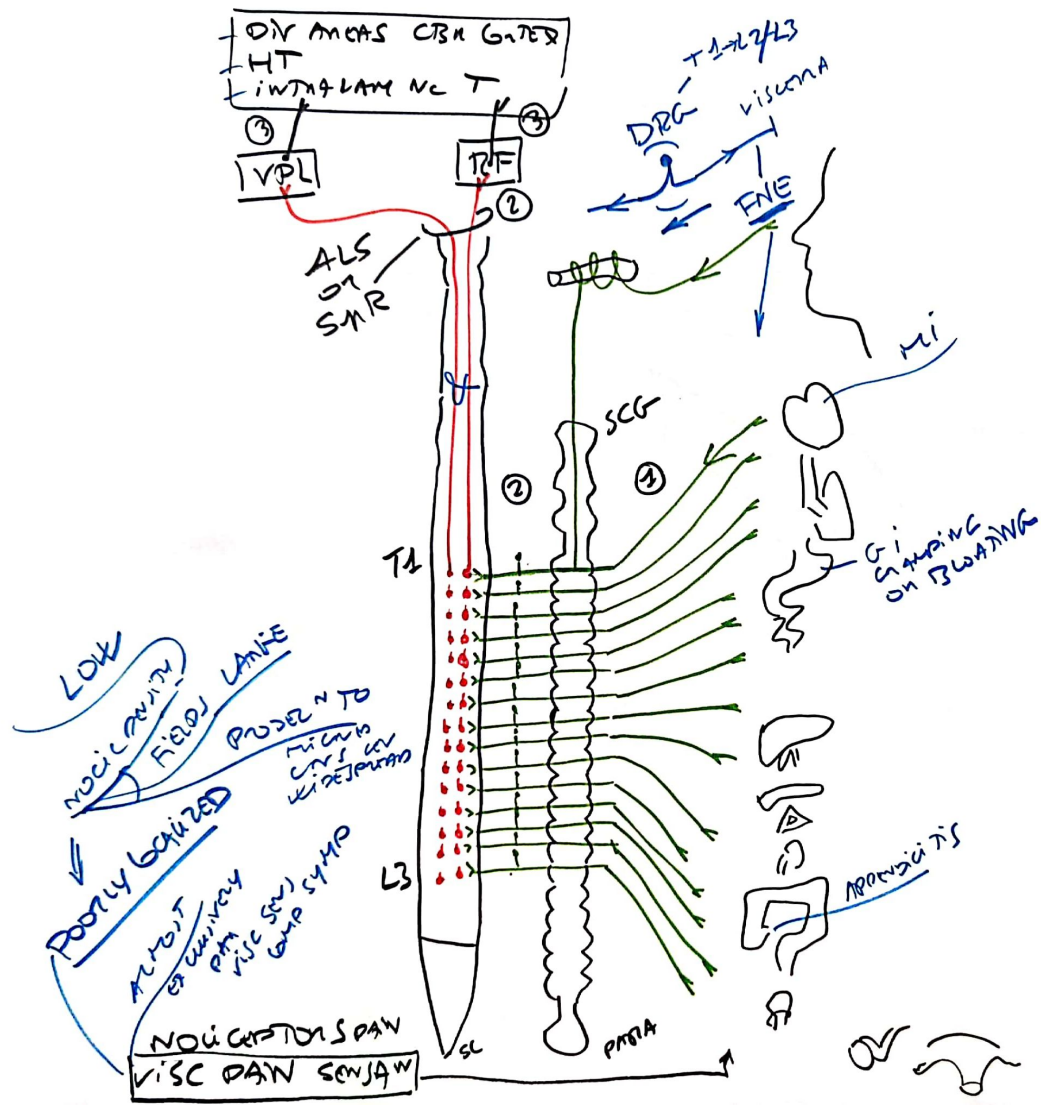












VISCERO
 SENSORY
 SYMP
PAIN

