

OC CILIARE *

ACCOMPAGNEMENT
N
ANNEXES
AV
N

○ GANGLIONS
○ SENSIBLE
○ * AUTONOMIE

• TRI TRIGEMINAL *

• FACIAL CRANICALE *

* PRENVOIS PALATIN
* SUBMAND
* SUB LING

• AVD VESTIBULAIRE *

• SEM AC R? *

TIVE *

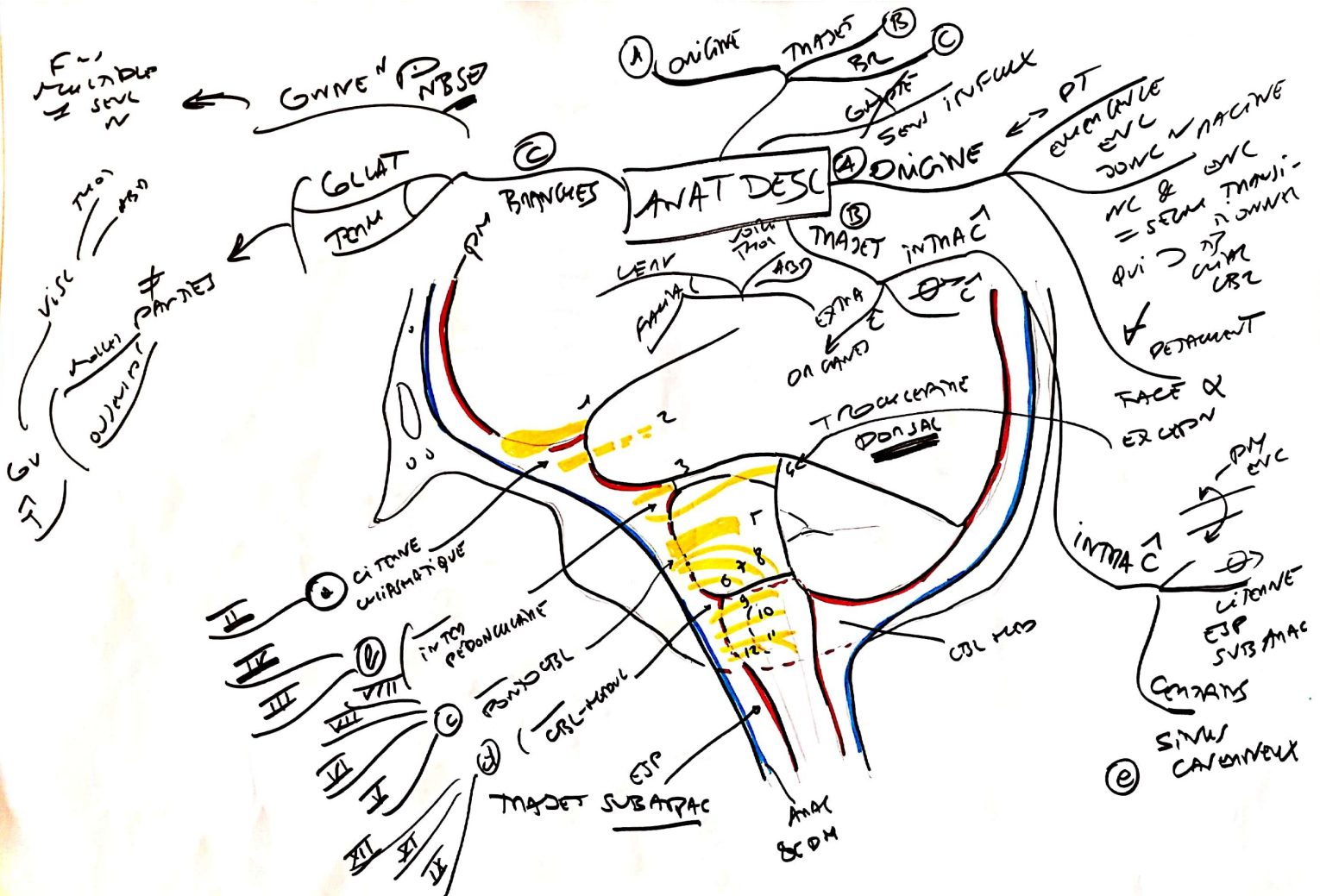
* OTIQUE

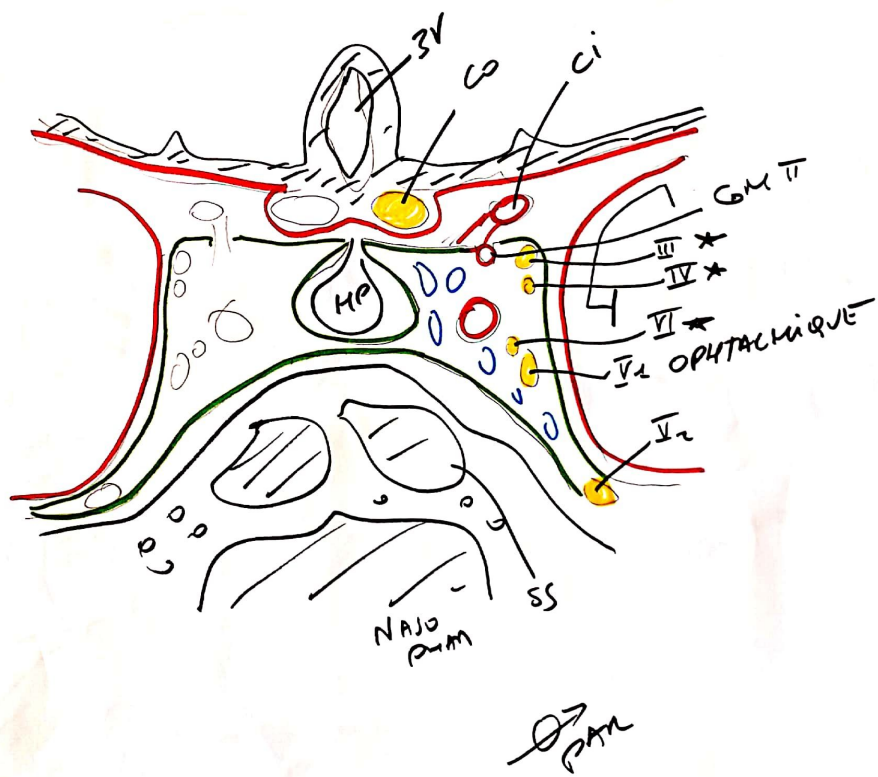
• GL

① SUP.

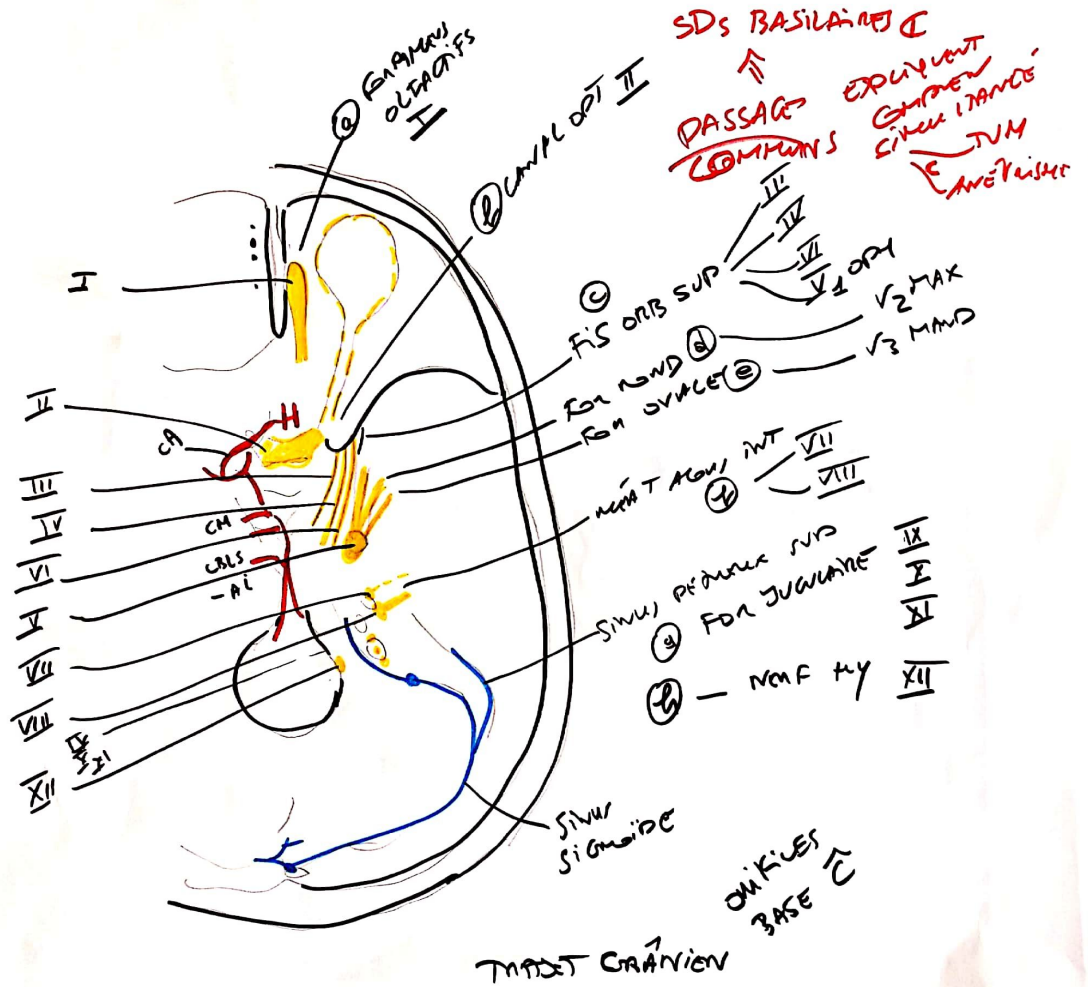
①

• VA ② SUP.
③ INF.



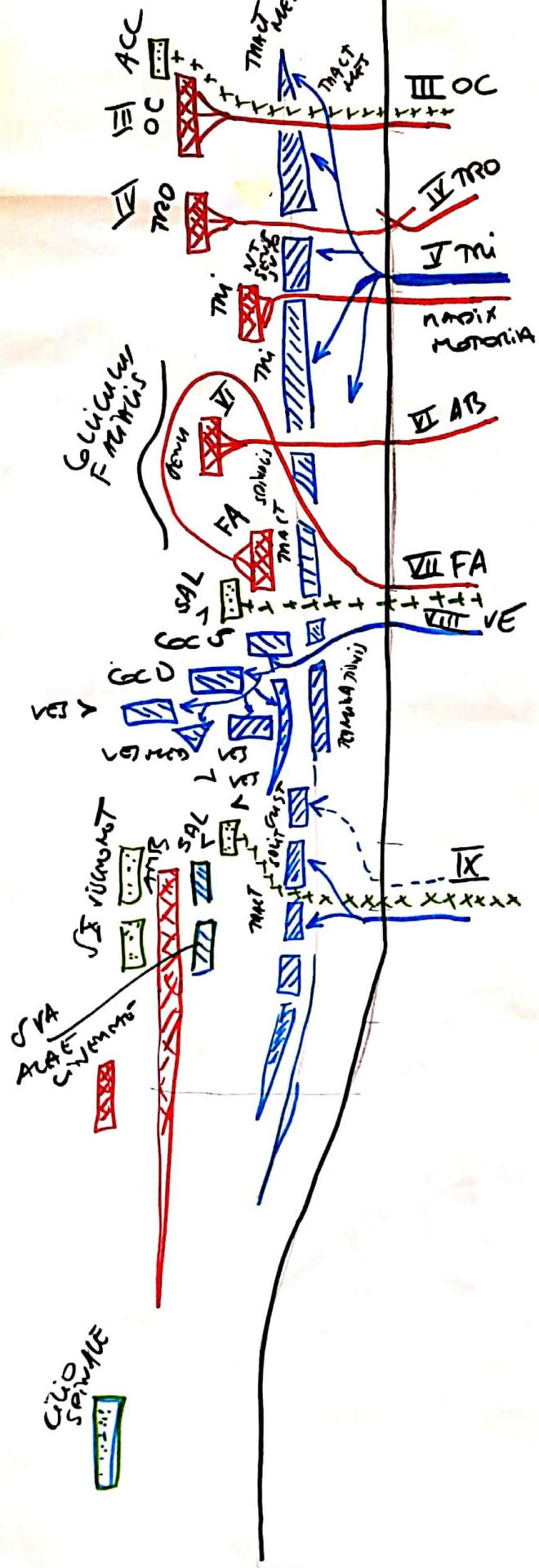


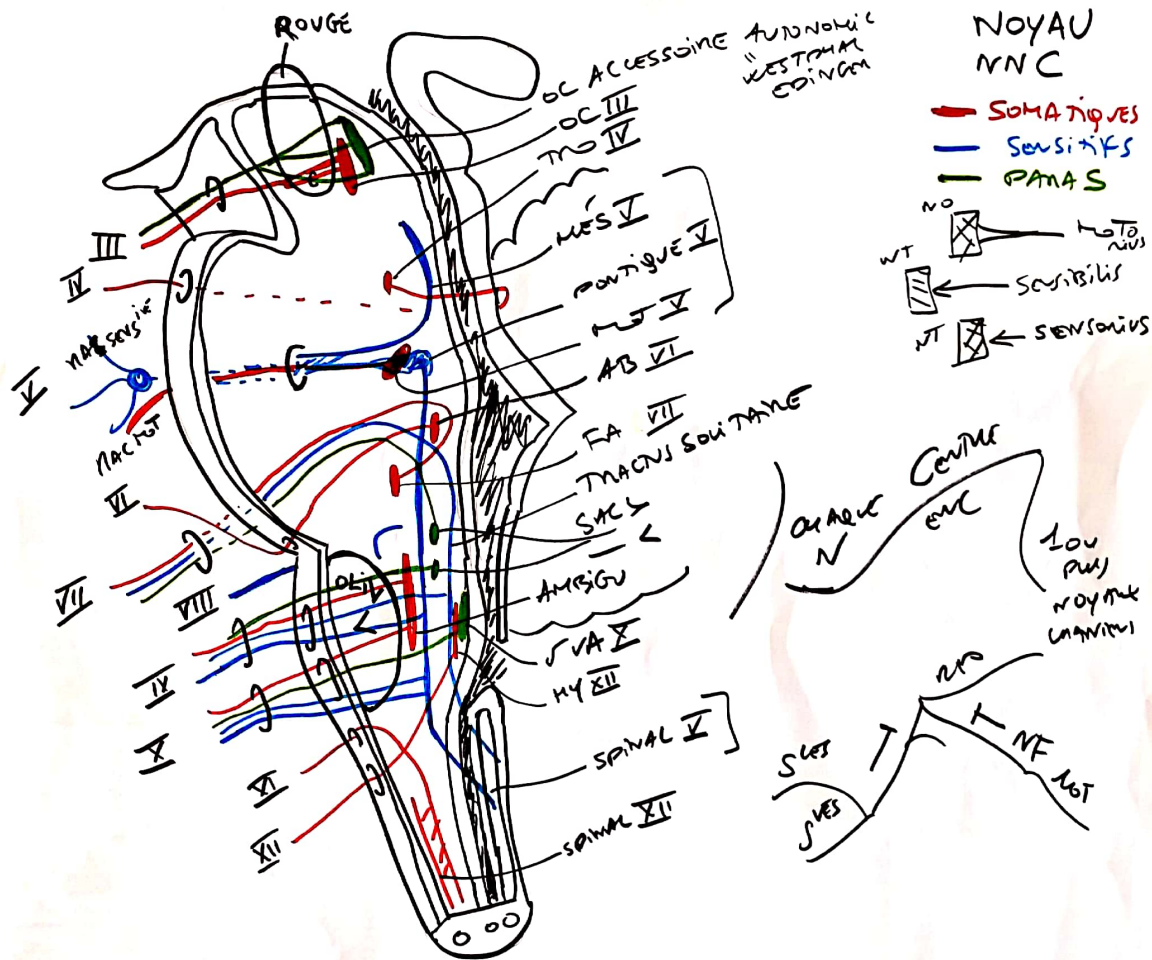
SINUS CAVERNEUX

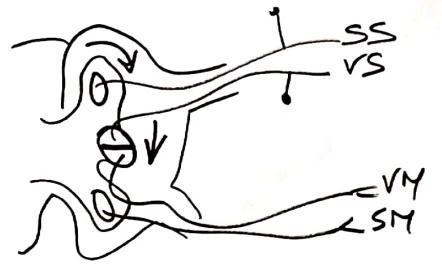
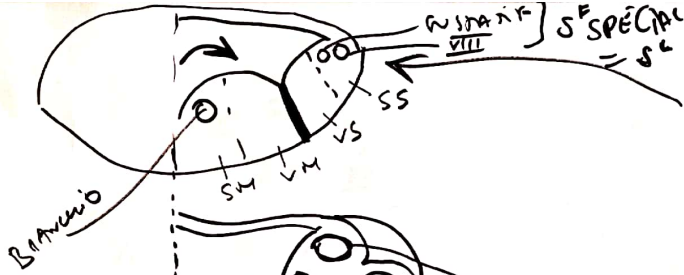


← NUCLEI →
 NERVORUM
 CRANIALIUM

I TRACTUS OLFACTORIUS
 II TRACTUS OPTICUS





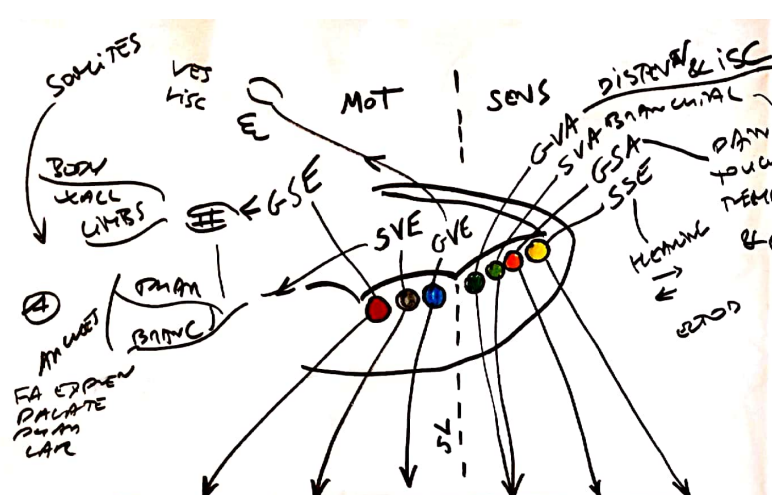


TRANSFERT
MÉDIAN
→ EXTENSION
GLOMÈRES

CORRESPONDANCE
TOPOG
FONCTIONNELLE
NOYAU

	SOMATO	BRANCIO	VISCERO	VISCERO	SOMATO	SENSORI
FN						
SEVS LS	1 I OL					OLF
	2 II OP					VISION
	8 VIII VE					ÉQUILIBRE
	3 III OC		ACC			
Mot	4 IV TRO					
	6 VI AB	??				
	11 XI AC					
	12 XII HY					
MIX	5 V TRI		SAL >	?	SEPARATE EXTRINSÈQUE	GOUT
	7 VII FA		SAL <			
	9 IX GL		DORSAL			
	10 X VA					

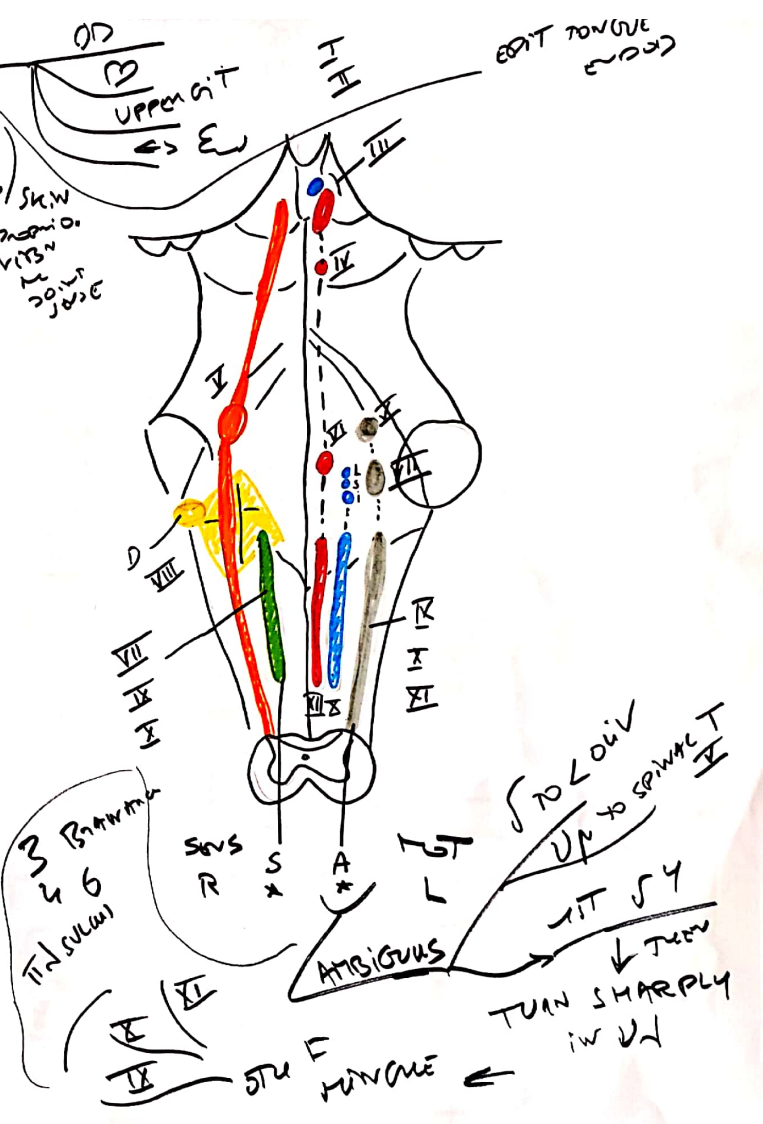
CONNEXION
↓
CIRCUITS
REFLEXES
& SYNCRGIE
ENCÉPHALIQUE



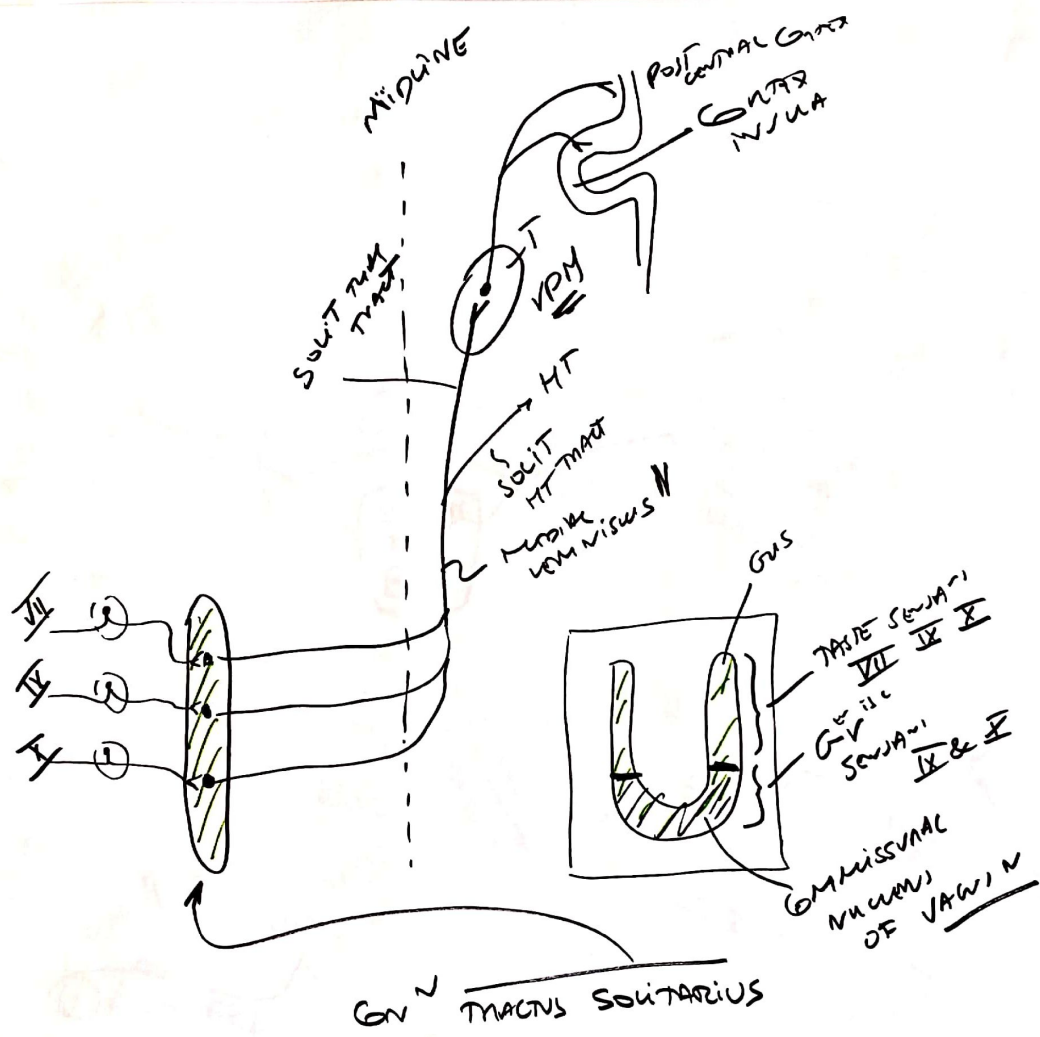
②

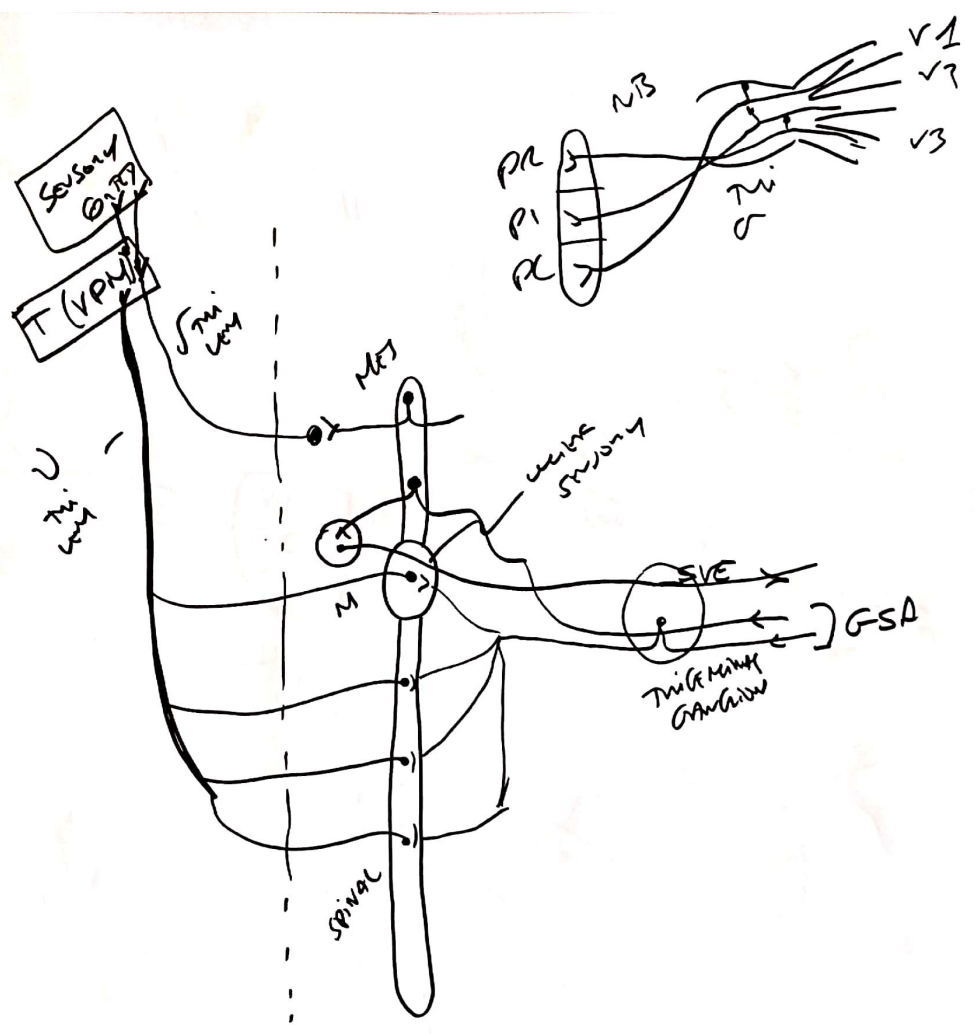
BS						
MI DB	● III ● IV		● V ● VI	● VII ● VIII	● IX ● X	● XI ● XII
P	● VI	● VII ● VIII	● IX ● X	● XI ● XII	● XIII ● XIV	● XV ● XVI
MO	■ III ■ IV	■ V ■ VI	■ VII ■ VIII	■ IX ■ X	■ XI ■ XII	■ XIII ■ XIV

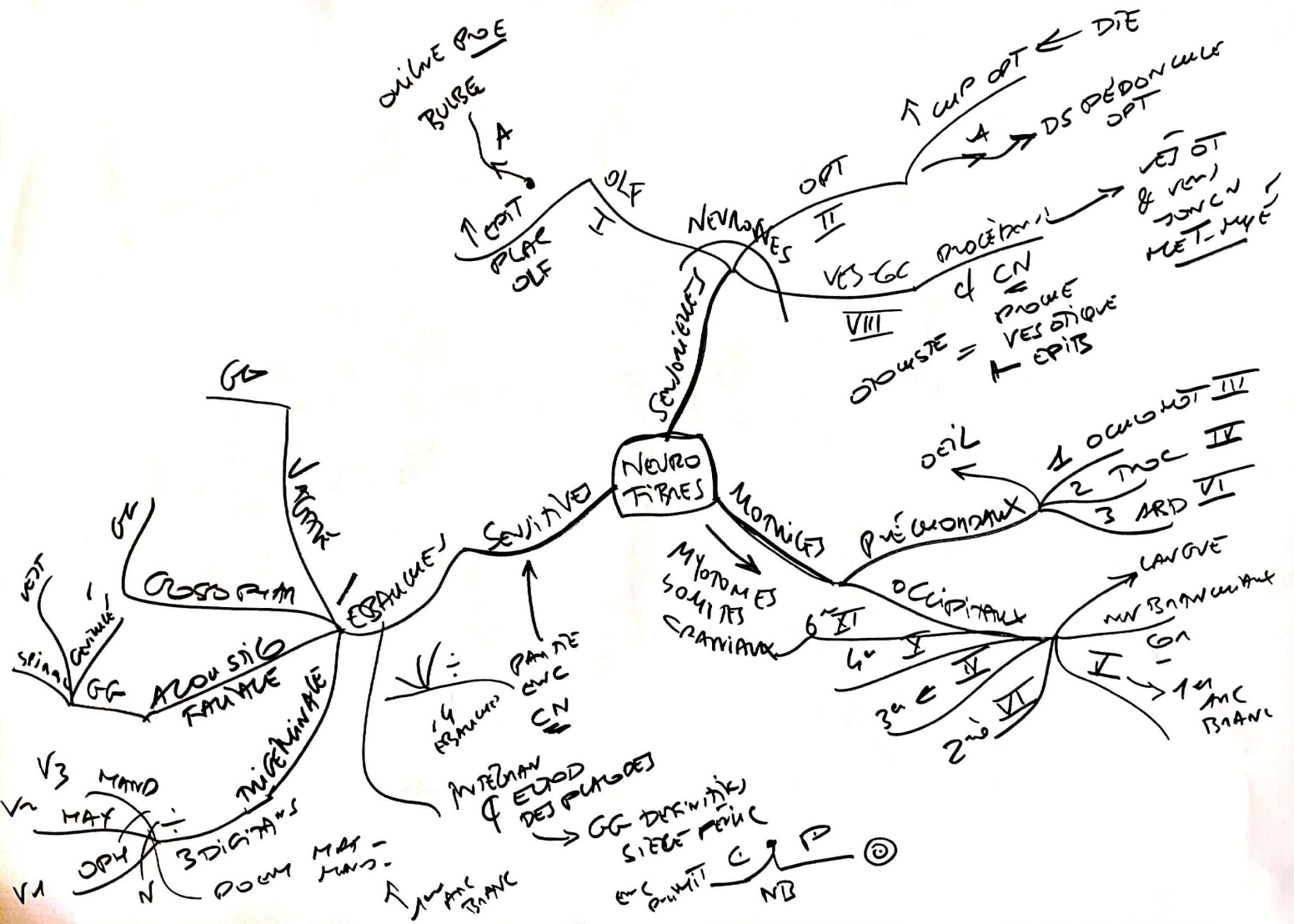
SOMATO BRANCIO viscero
 PANAS
 G = GUSTATORY

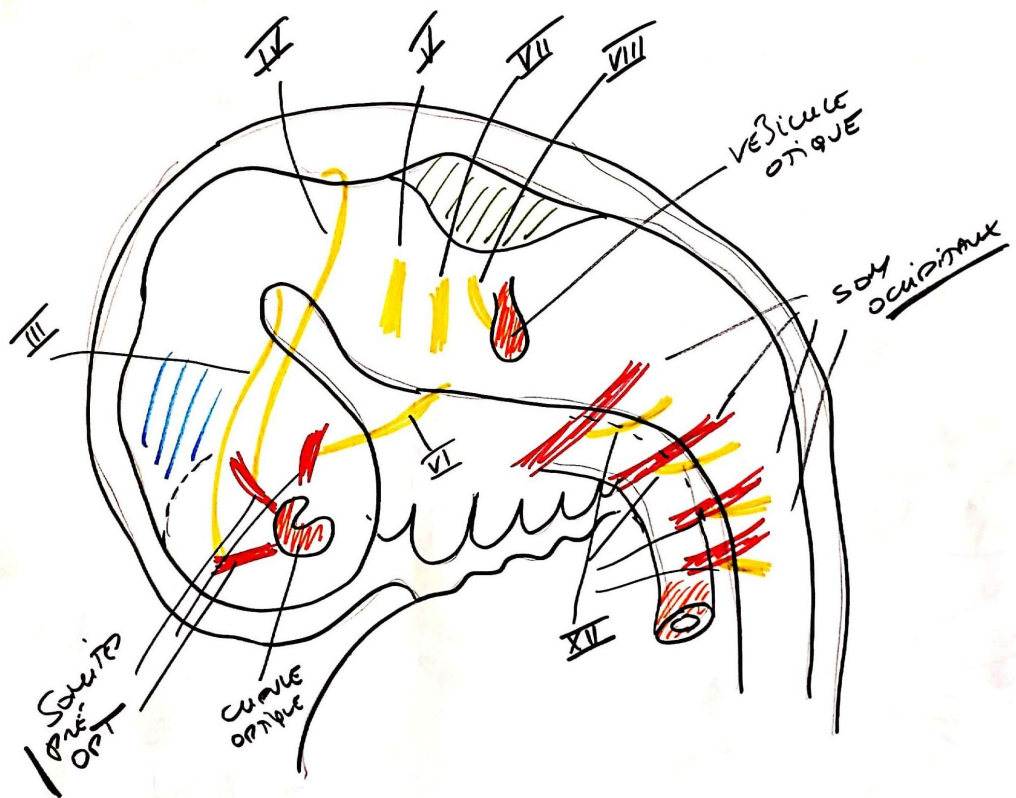


- ① FUNC AL GL GM IN BS (EMBRYO)
 ② ≠ CN NUCLEI IN ADULT ← 7 FUNC AL GL









INN^N SOMITES SS

