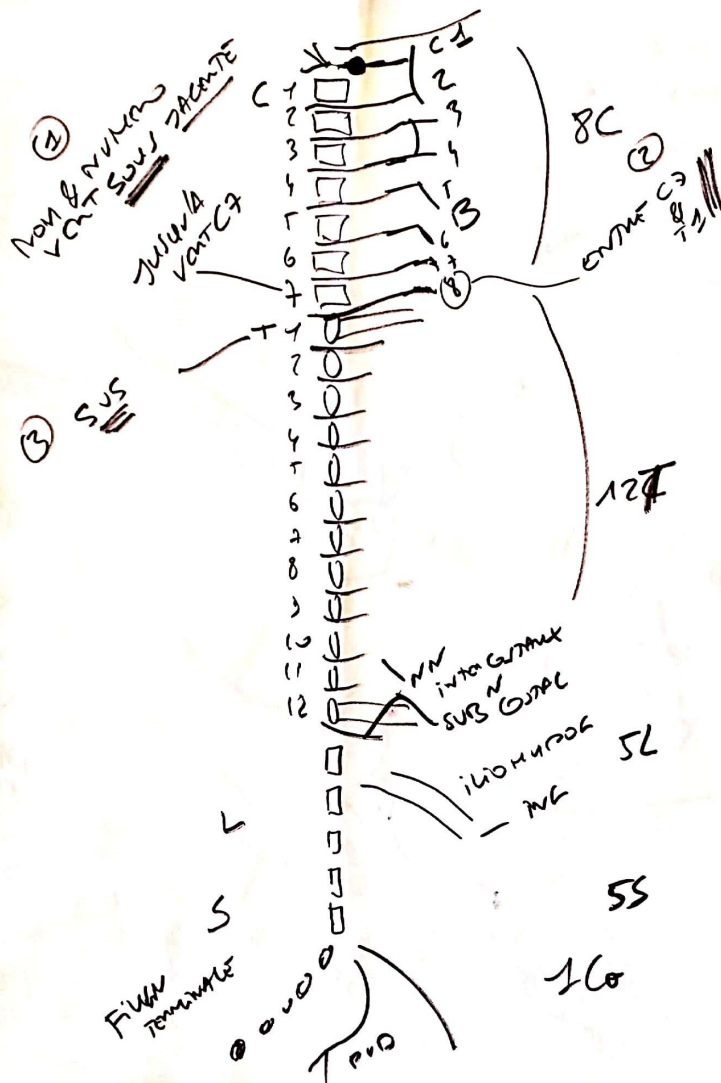
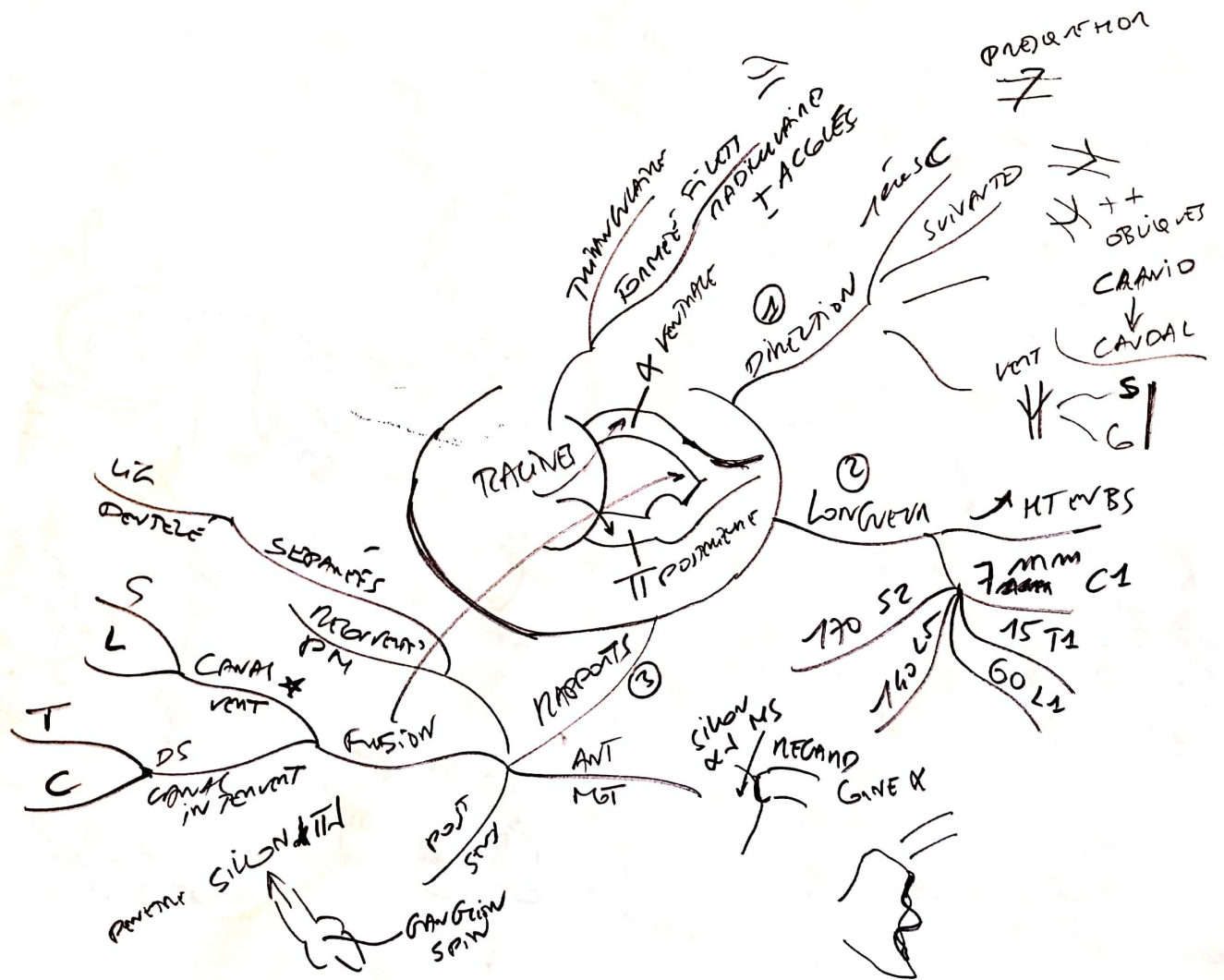


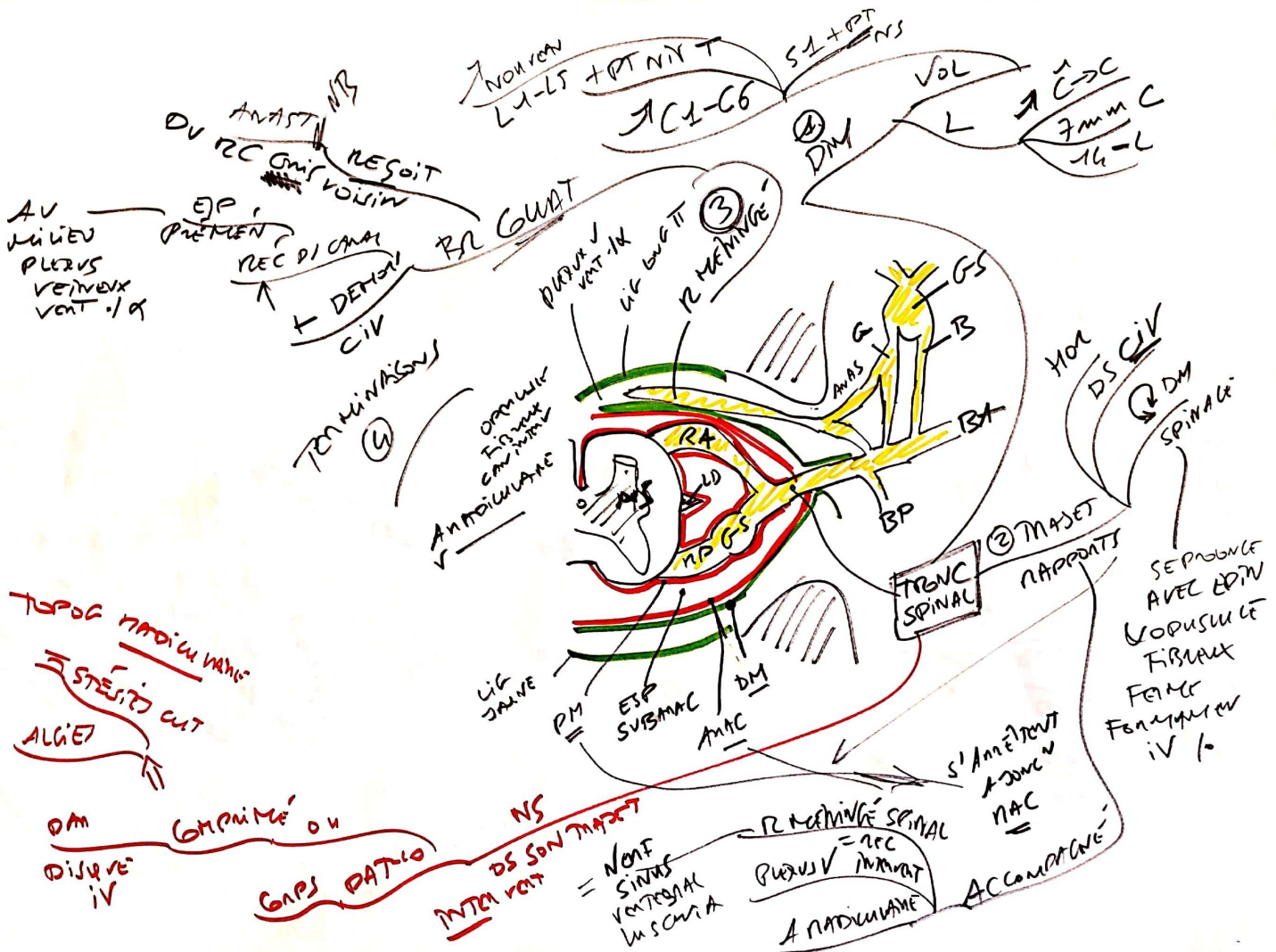
- C1
- C2
- C3
- C4
- C5
- C6
- C7
- \* C8
- \* T1
- T2

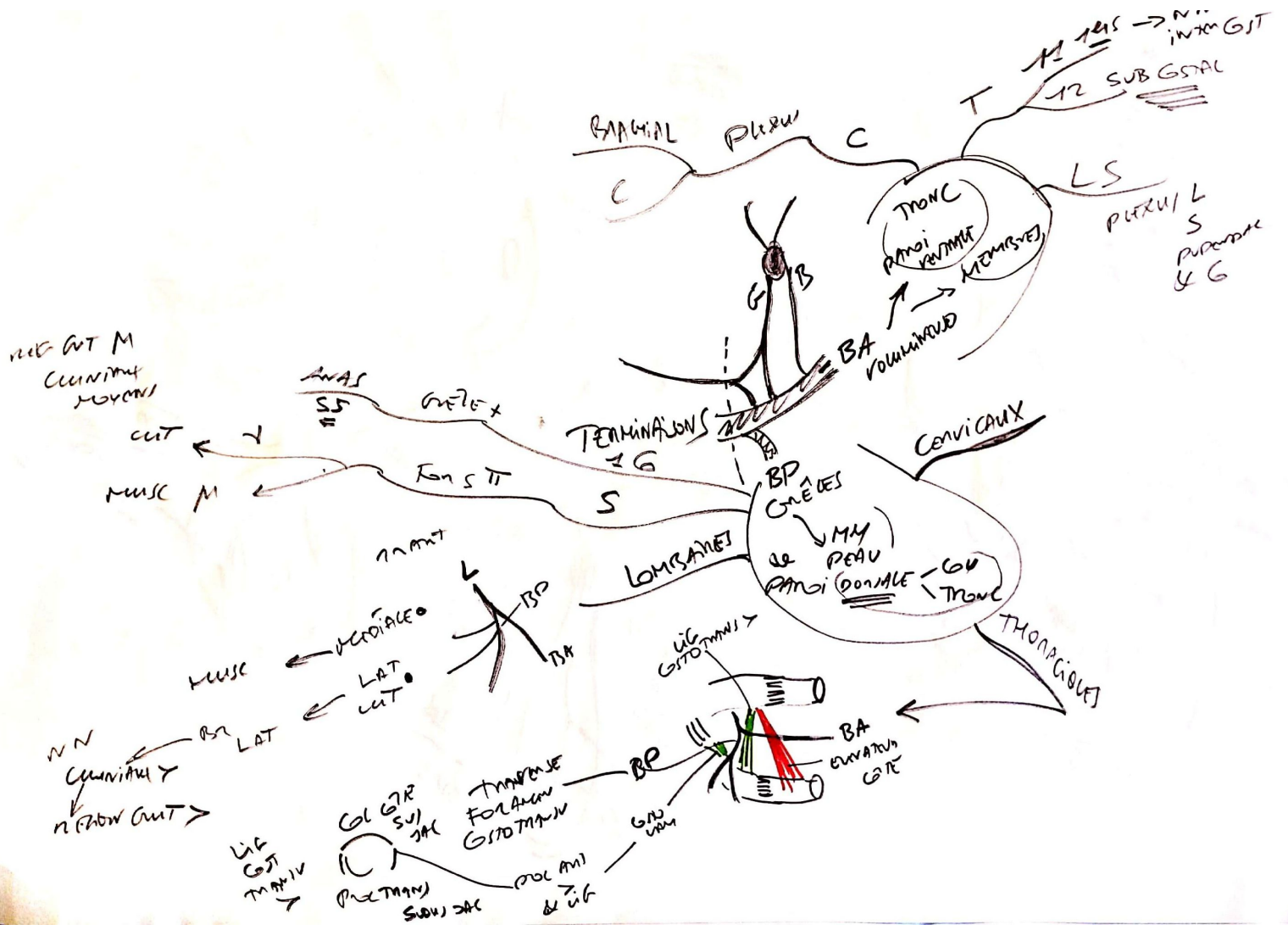


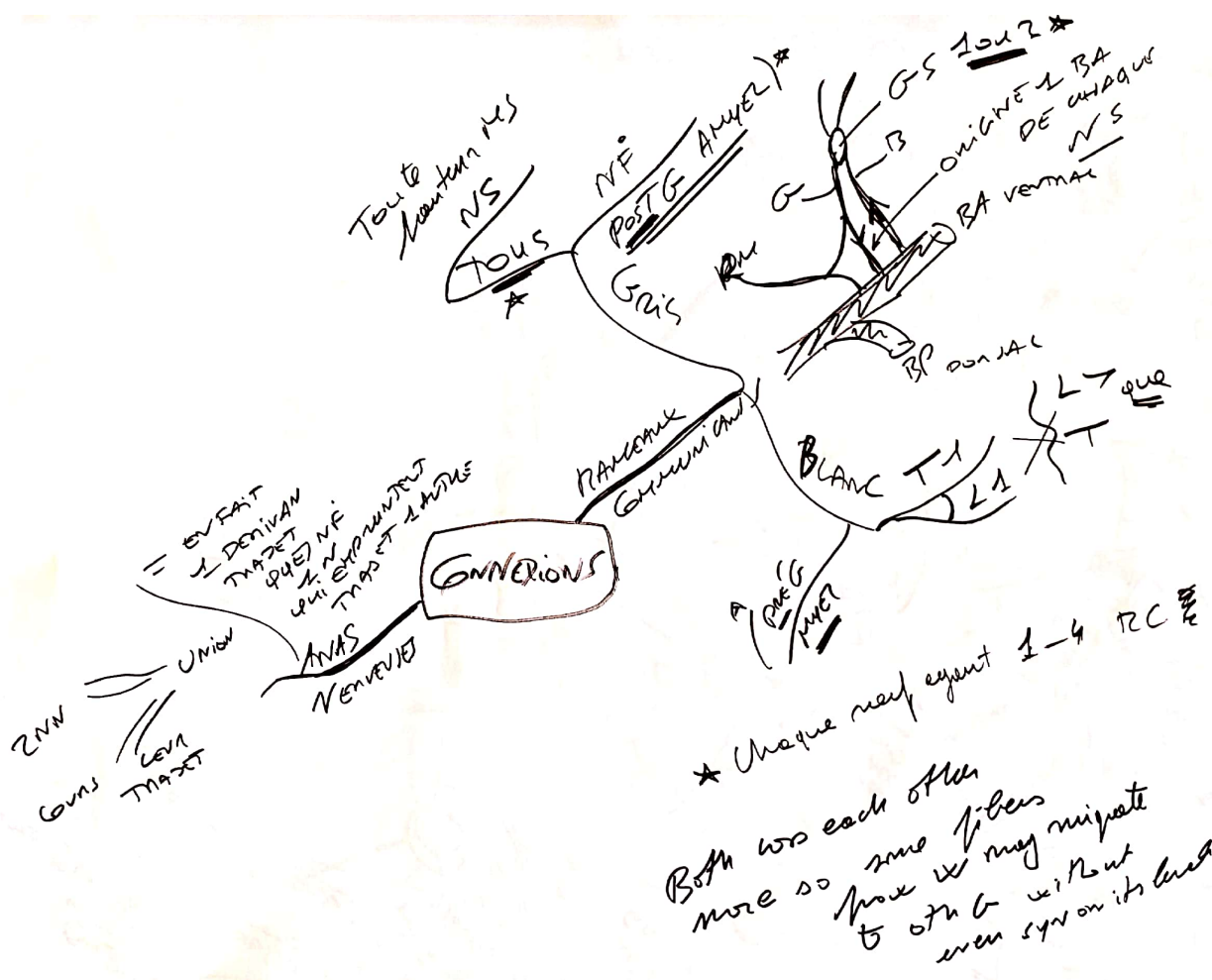
NB & NOM  
 31 PARTS

VENT JUAN  
 → NB  
 → SPINAX

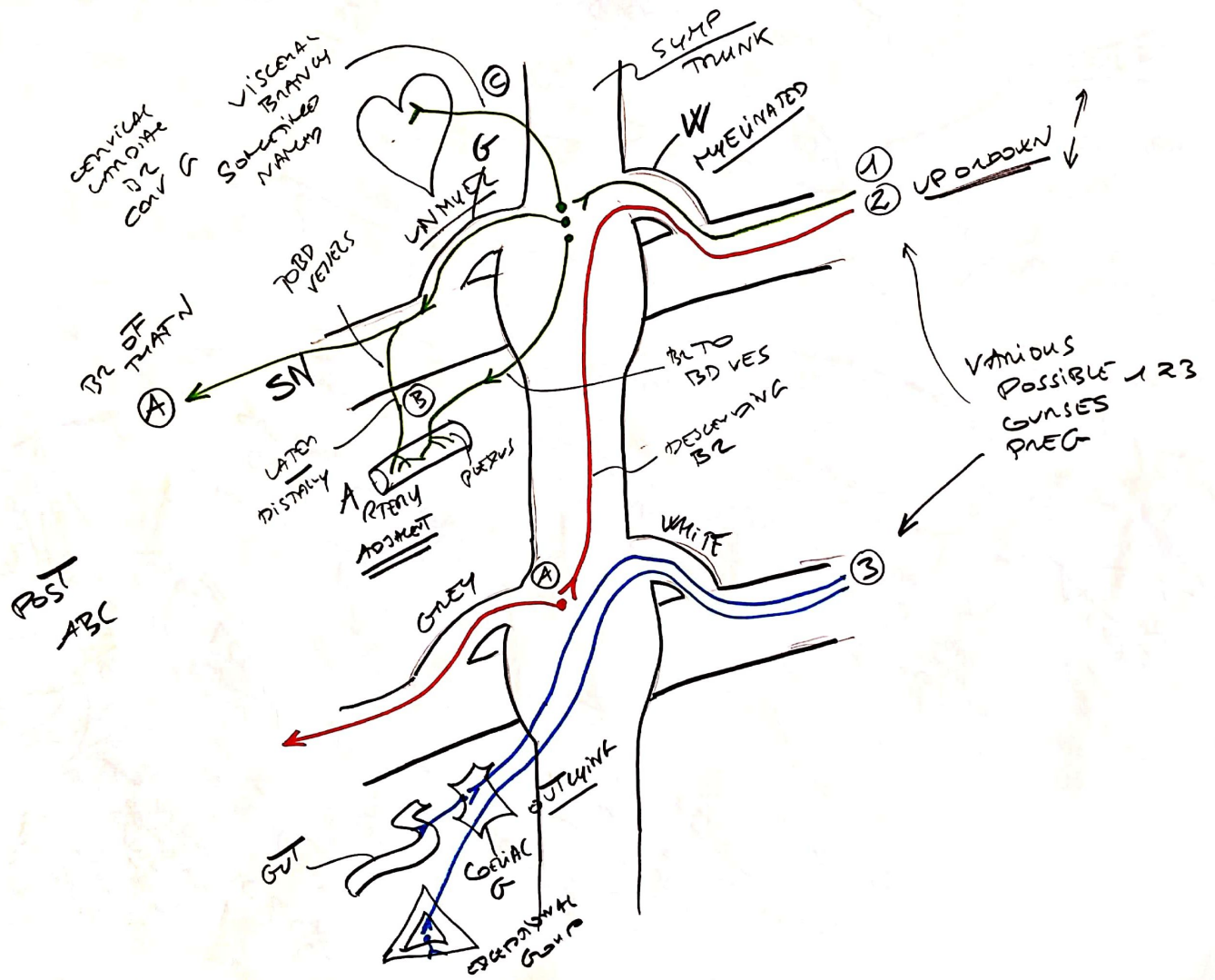


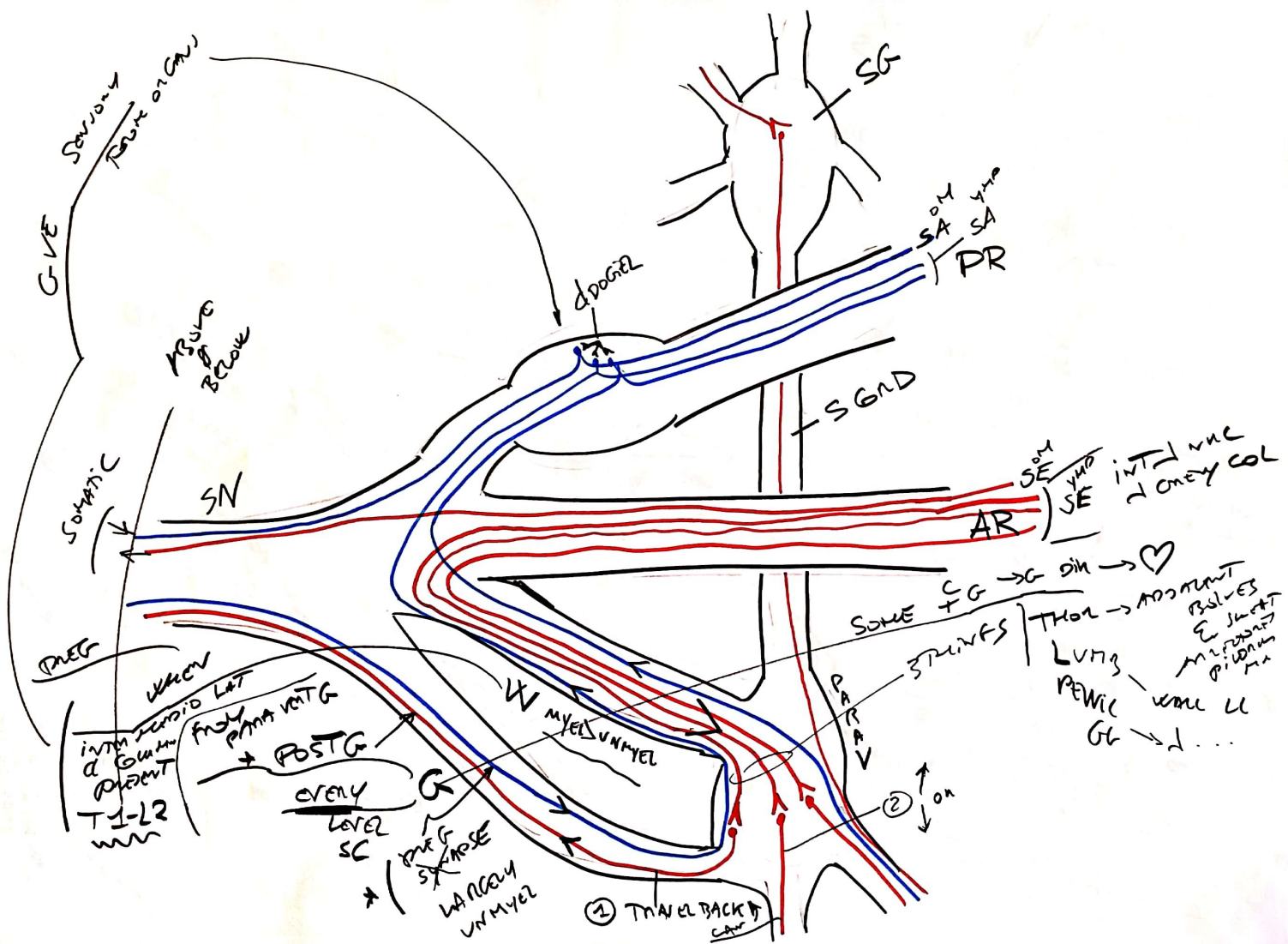


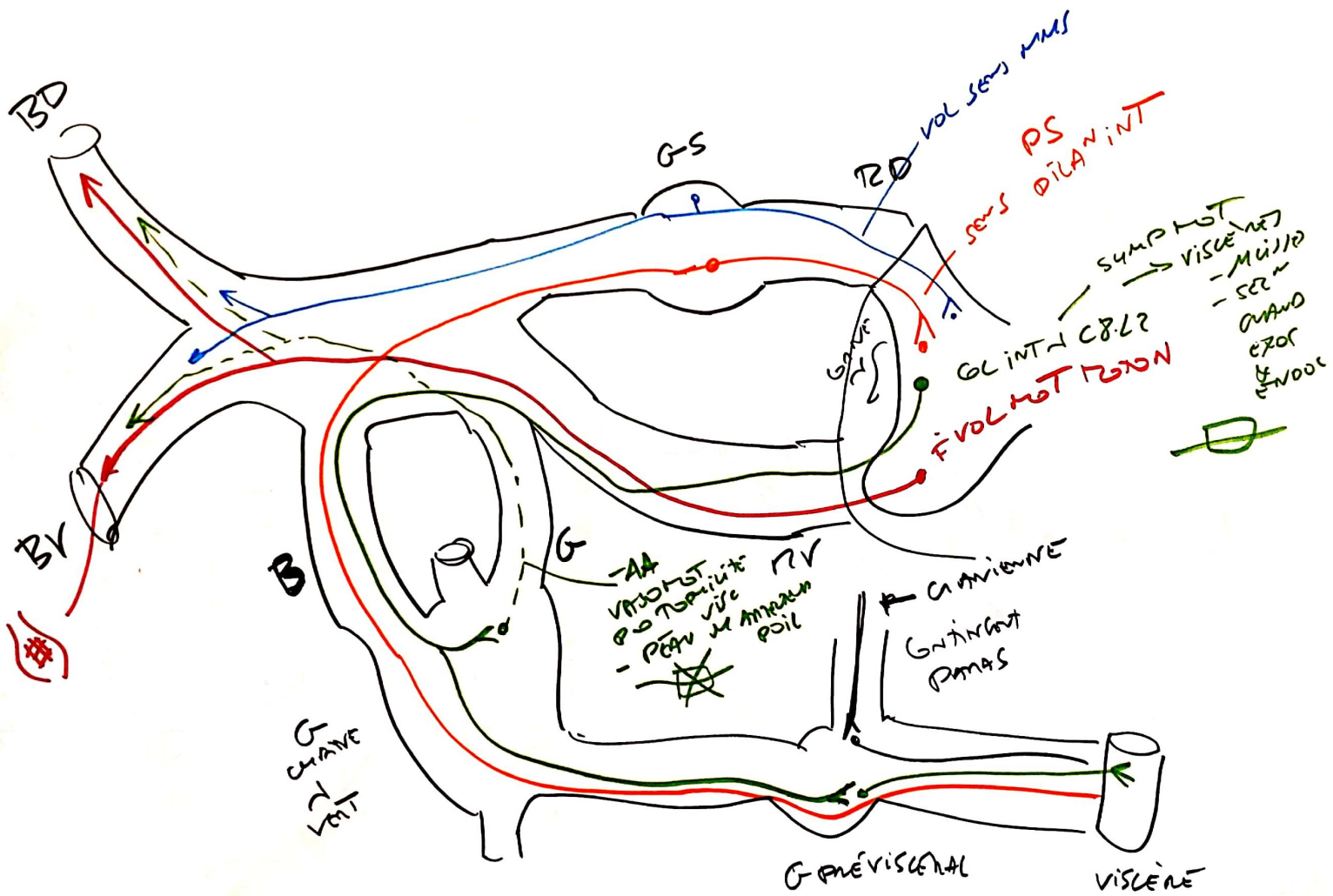


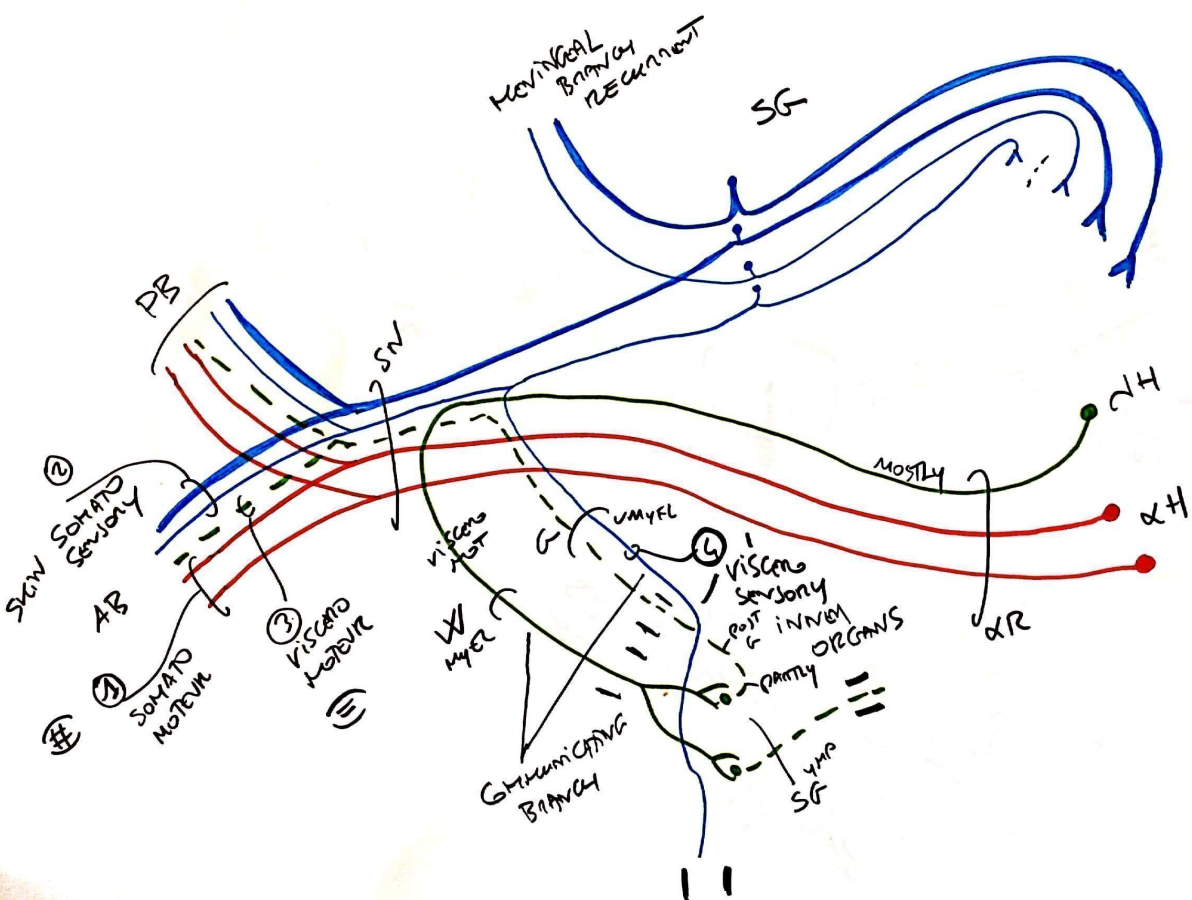


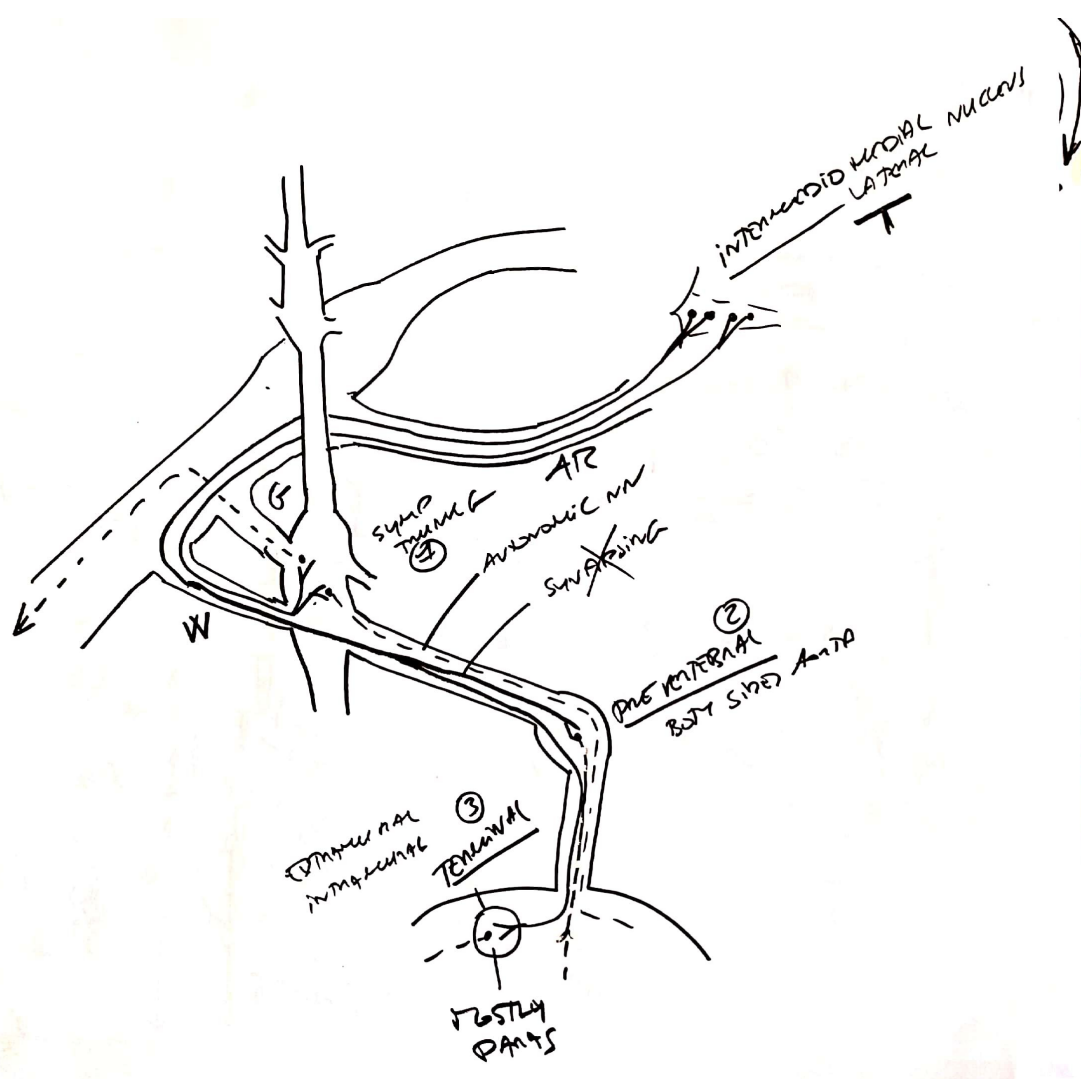


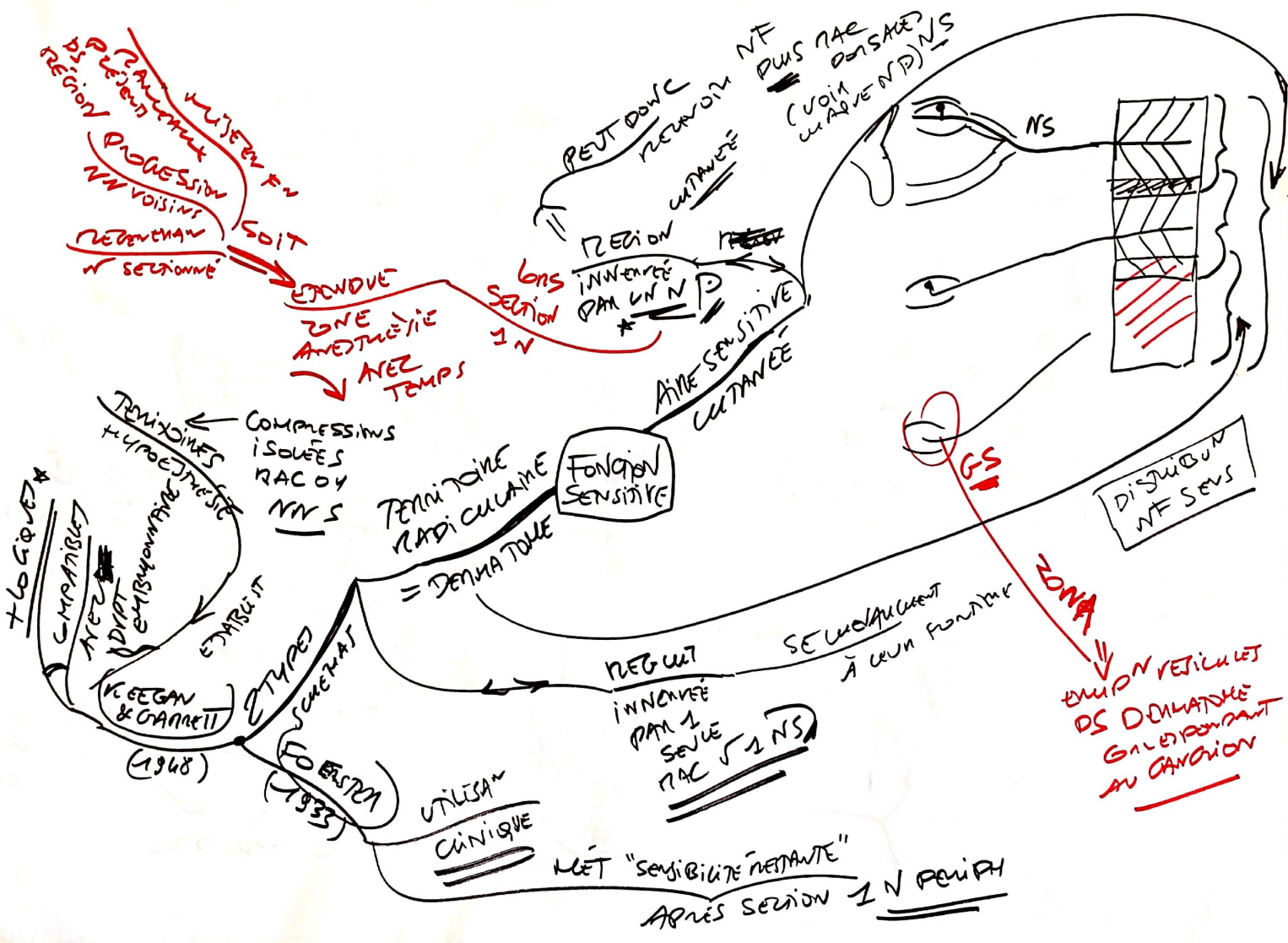


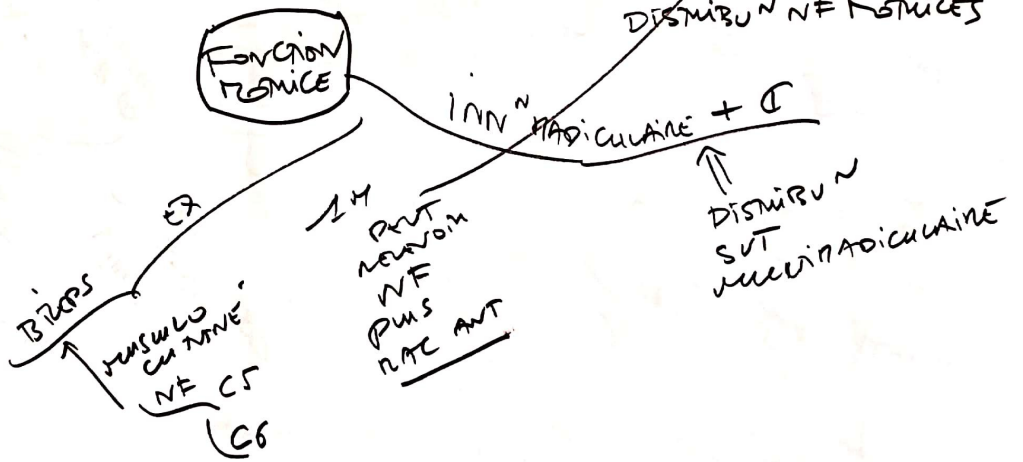
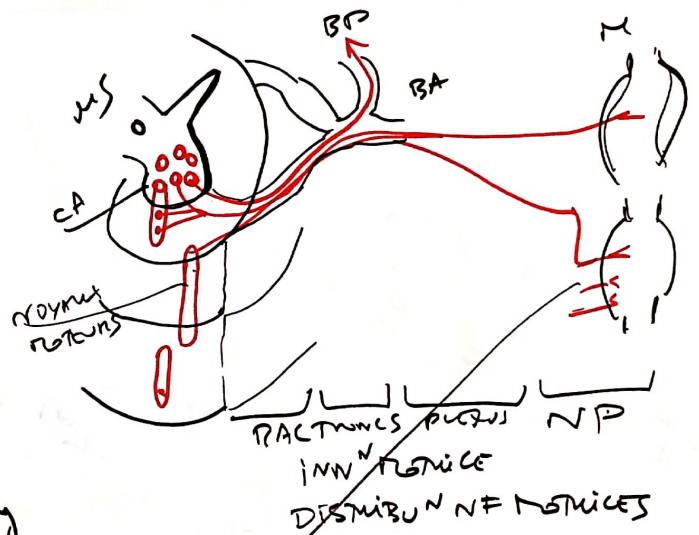


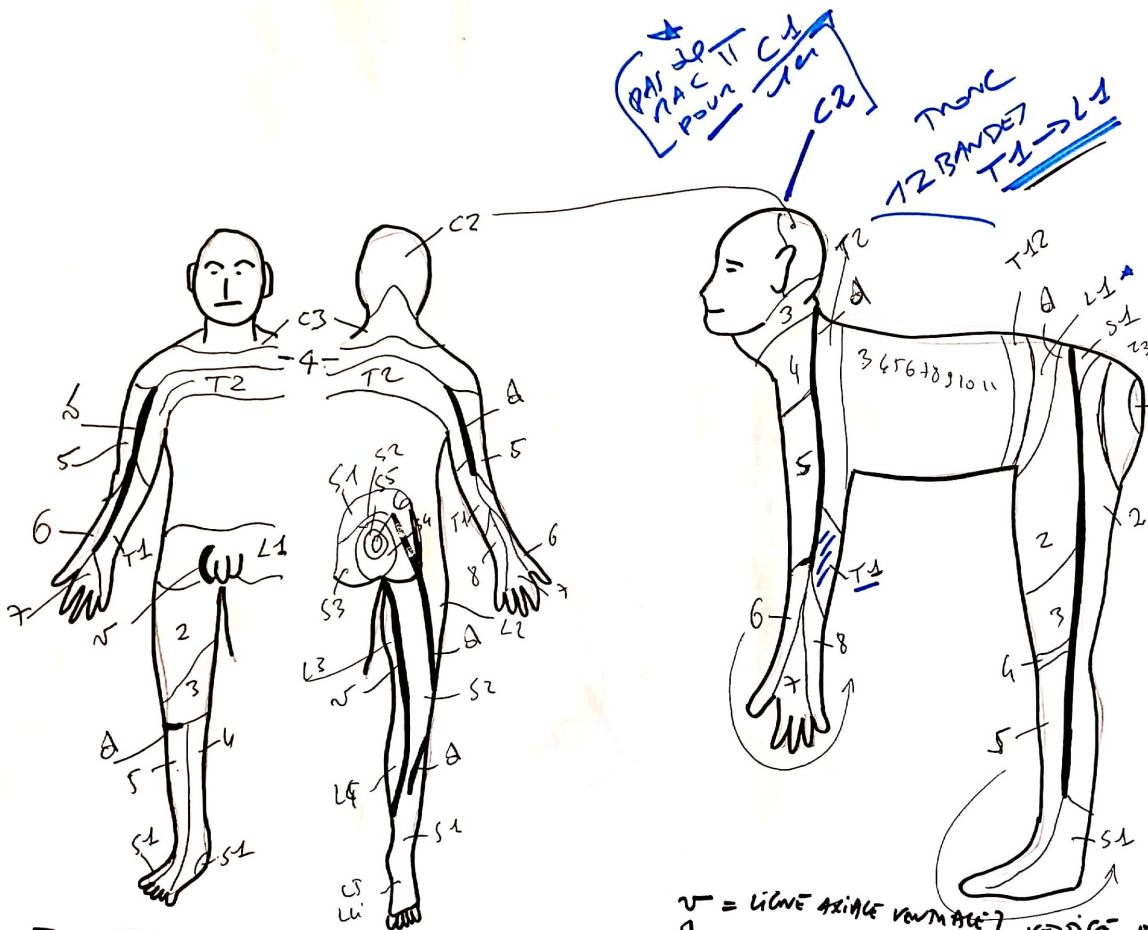












DERMATOMES

= CHAMPS RECEPTIFS DES RAJINES POSTERIEURES  
 = "NETTES DISTINCTIONS"  
 ARRANGEMENT META-MERIQUE QUI EST RESTE UN AN NIVEAU TRONC

REGION PERIANALE & NON LE PIED  
 = REGION + POSTERIEURE  
S4 S5



v = ligne axiale ventrale } VERTEBRE EMBOYONNAIRE  
 d = — — dorsale }

FOENSTED & MEDICAL RESEARCH GROUP'S  
 1933 1962



